

TRACT 45395 - Bossier and Caddo Parishes, Louisiana

All of the lands now or formerly constituting the beds and bottoms of all water bodies of every nature and description as to which title is vested in the State of Louisiana, together with all islands arising therein and other lands formed by accretion or by reliction, where allowed by law, excepting tax adjudicated lands, and not presently under mineral lease on February 10, 2021, situated in Bossier and Caddo Parishes, Louisiana, and more particularly described as follows: Beginning at the Northwest corner of State Lease No. 10634, as amended, also being a point on the Southern boundary of State Lease No. 19758 having Coordinates of X = 1,646,400.00 and Y = 630,800.00; thence South 5,400.00 feet along the West boundary of said State Lease No. 10634 to its Southwest corner, having Coordinates of X = 1,646,400.00 and Y = 625,400.00; thence West 5,367.47 feet to a point having Coordinates of X = 1,641,032.53 and Y = 625,400.00; thence North 668.65 feet to the Southeast corner of Operating Agreement AO 315 having Coordinates of X = 1,641,032.53 and Y = 626,068.65; thence North 00 degrees 39 minutes 41 seconds West 4,731.67 feet along the East boundary of said Operating Agreement AO 315 to a point having Coordinates of X = 1,640,977.91 and Y = 630,800.00; thence East 4,750.26 feet to the Southwest corner of said State Lease No. 19758 having Coordinates of X = 1,645,728.17 and Y = 630,800.00; thence East 671.83 feet along the Southern boundary of said State Lease No. 19758 to the point of beginning, **LESS AND EXCEPT** all that portion, if any, of State Lease Nos. 6931, as amended, and 10965, as amended, and Operating Agreement No. AO 315, that may fall within the above described tract, containing approximately **126.276 acres**, all as more particularly outlined on a plat on file in the Office of Mineral Resources, Department of Natural Resources. All bearings, distances and coordinates are based on Louisiana Coordinate System of 1927, (North or South Zone), where applicable.

NOTE: The above description of the Tract nominated for lease has been provided and corrected, where required, exclusively by the nomination party. Any mineral lease selected from this Tract and awarded by the Louisiana State Mineral and Energy Board shall be without warranty of any kind, either express, implied, or statutory, including, but not limited to, the implied warranties of merchantability and fitness for a particular purpose. Should the mineral lease awarded by the Louisiana State Mineral and Energy Board be subsequently modified, cancelled or abrogated due to the existence of conflicting leases, operating agreements, private claims or other future obligations or conditions which may affect all or any portion of the leased Tract, it shall not relieve the Lessee of the obligation to pay any bonus due thereon to the Louisiana State Mineral and Energy Board, nor shall the Louisiana State Mineral and Energy Board be obligated to refund any consideration paid by the Lessor prior to such modification, cancellation, or abrogation, including, but not limited to, bonuses, rentals and royalties.

Applicant: THEOPHILUS OIL, GAS AND LAND SERVICES, LLC

Bidder	Cash Payment	Price/Acre	Rental	Oil	Gas	Other

Legend

21020005



Active_Leases



Counties



0 2,000 Feet



SL 19758

P.O.B.

RED RIVER

RED RIVER WILKERSON CUTOFF

T16N - R12W

SL 16034

SL 6931

CADDO

SL 10965

BOSSIER

A0315

T16N - R13W

TRACT 45396 - De Soto Natchitoches and Red River Parishes, Louisiana

All of the lands now or formerly constituting the beds and bottoms of all water bodies of every nature and description as to which title is vested in the State of Louisiana, together with all islands arising therein and other lands formed by accretion or by reliction, where allowed by law, excepting tax adjudicated lands, and not presently under mineral lease on February 10, 2021, situated in De Soto Natchitoches and Red River Parishes, Louisiana, and more particularly described as follows: Beginning at the Northeast corner of State Lease No. 21854 having Coordinates of X = 1,739,946.86 and Y = 456,031.56; thence North 89 degrees 33 minutes 44 seconds West 5,297.06 feet along the north boundary of said State Lease No. 21854 to its Northwest corner having Coordinates of X = 1,734,649.96 and Y = 456,072.03; thence West 5,104.44 feet to a point on the east boundary of State Lease No. 21981 having Coordinates of X = 1,729,545.52 and Y = 456,072.03; thence North 5,597.97 feet along the east boundary of said State Lease No. 21981 to its Northeast corner and a point on the south boundary of State Lease No. 20424 having Coordinates of X = 1,729,545.52 and Y = 461,670.00; thence East 5,102.27 feet along the south boundary of said State Lease No. 20424 to its Southeast corner and the Southwest corner of the southern portion of State Lease No. 19839, as amended having Coordinates of X = 1,734,647.79 and Y = 461,670.00; thence continue East 5,292.21 feet along the south boundary of said State Lease No. 19839 to its Southeast corner having Coordinates of X = 1,739,940.00 and Y = 461,670.00; thence South 00 degrees 04 minutes 11 seconds East 5,638.45 feet to the point of beginning containing approximately **19 acres**, all as more particularly outlined on a plat on file in the Office of Mineral Resources, Department of Natural Resources. All bearings, distances and coordinates are based on Louisiana Coordinate System of 1927, (North or South Zone), where applicable.

NOTE: The above description of the Tract nominated for lease has been provided and corrected, where required, exclusively by the nomination party. Any mineral lease selected from this Tract and awarded by the Louisiana State Mineral and Energy Board shall be without warranty of any kind, either express, implied, or statutory, including, but not limited to, the implied warranties of merchantability and fitness for a particular purpose. Should the mineral lease awarded by the Louisiana State Mineral and Energy Board be subsequently modified, cancelled or abrogated due to the existence of conflicting leases, operating agreements, private claims or other future obligations or conditions which may affect all or any portion of the leased Tract, it shall not relieve the Lessee of the obligation to pay any bonus due thereon to the Louisiana State Mineral and Energy Board, nor shall the Louisiana State Mineral and Energy Board be obligated to refund any consideration paid by the Lessor prior to such modification, cancellation, or abrogation, including, but not limited to, bonuses, rentals and royalties.

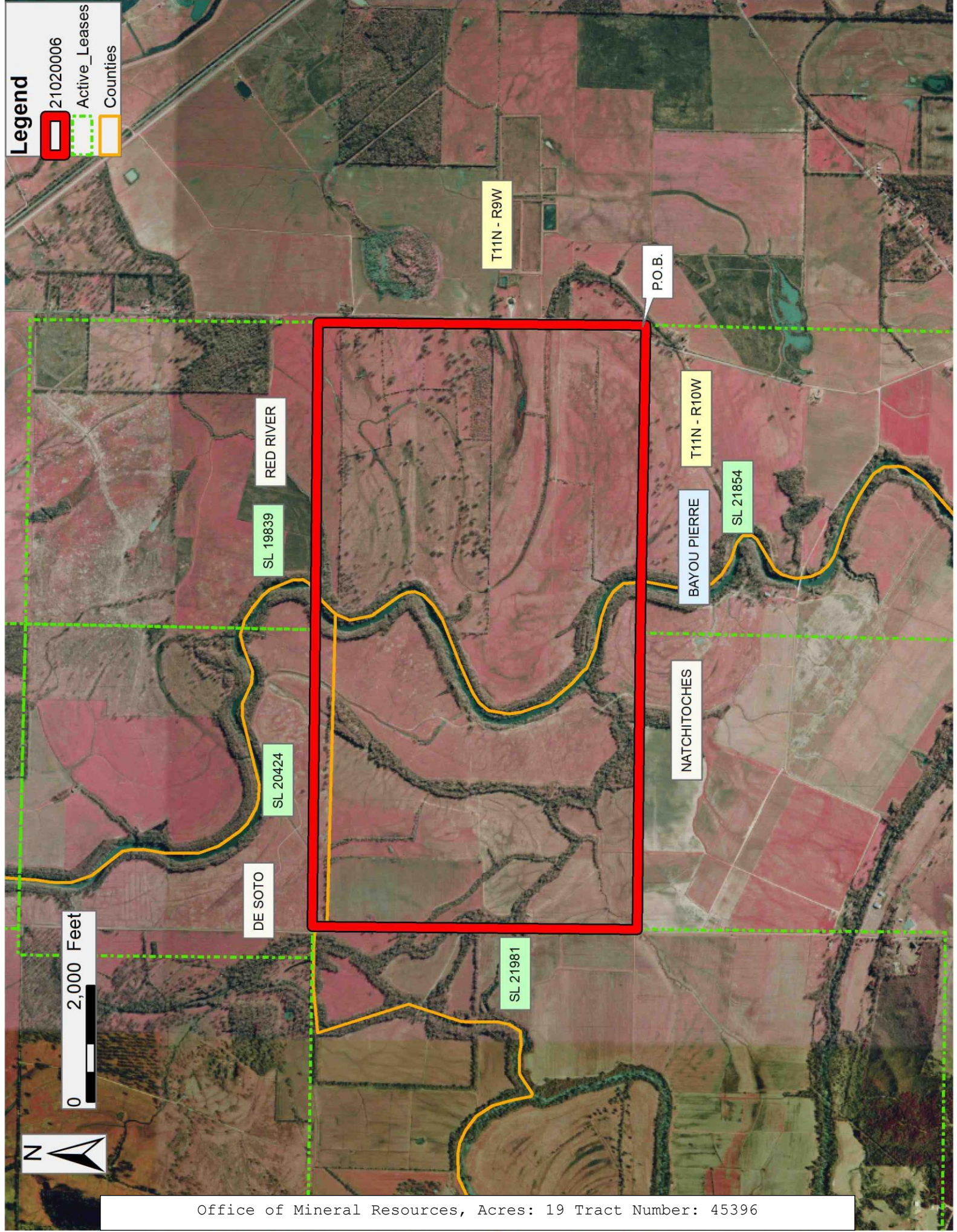
Applicant: CYPRESS ENERGY CORPORATION

Bidder	Cash Payment	Price/Acre	Rental	Oil	Gas	Other

Legend

- 21020006
- Active_Leases
- Counties

0 2,000 Feet



TRACT 45397 - Natchitoches Parish, Louisiana

All of the lands now or formerly constituting the beds and bottoms of all water bodies of every nature and description as to which title is vested in the State of Louisiana, together with all islands arising therein and other lands formed by accretion or by reliction, where allowed by law, excepting tax adjudicated lands, and not presently under mineral lease on February 10, 2021, situated in Natchitoches Parish, Louisiana, and more particularly described as follows: Beginning at the Southwest corner of State Lease No. 21854 having Coordinates of X = 1,734,518.07 and Y = 445,408.59; thence West 4,972.55 feet to a point having Coordinates of X = 1,729,545.52 and Y = 445,408.59; thence North 5,363.96 feet to the Southeast corner of State Lease No. 21981 having Coordinates of X = 1,729,545.52 and Y = 450,772.55; thence continue North 5,299.48 feet along the east boundary of said State Lease No. 21981 to a point having Coordinates of X = 1,729,545.52 and Y = 456,072.03; thence East 5,104.44 feet to the Northwest corner of said State Lease No. 21854 having Coordinates of X = 1,734,649.96 and Y = 456,072.03; thence South 00 degrees 42 minutes 31 seconds West 10,664.25 feet along the west boundary of said State Lease No. 21854 to its Southwest corner and the point of beginning containing approximately **7 acres**, all as more particularly outlined on a plat on file in the Office of Mineral Resources, Department of Natural Resources. All bearings, distances and coordinates are based on Louisiana Coordinate System of 1927, (North or South Zone), where applicable.

NOTE: The above description of the Tract nominated for lease has been provided and corrected, where required, exclusively by the nomination party. Any mineral lease selected from this Tract and awarded by the Louisiana State Mineral and Energy Board shall be without warranty of any kind, either express, implied, or statutory, including, but not limited to, the implied warranties of merchantability and fitness for a particular purpose. Should the mineral lease awarded by the Louisiana State Mineral and Energy Board be subsequently modified, cancelled or abrogated due to the existence of conflicting leases, operating agreements, private claims or other future obligations or conditions which may affect all or any portion of the leased Tract, it shall not relieve the Lessee of the obligation to pay any bonus due thereon to the Louisiana State Mineral and Energy Board, nor shall the Louisiana State Mineral and Energy Board be obligated to refund any consideration paid by the Lessor prior to such modification, cancellation, or abrogation, including, but not limited to, bonuses, rentals and royalties.

Applicant: CYPRESS ENERGY CORPORATION

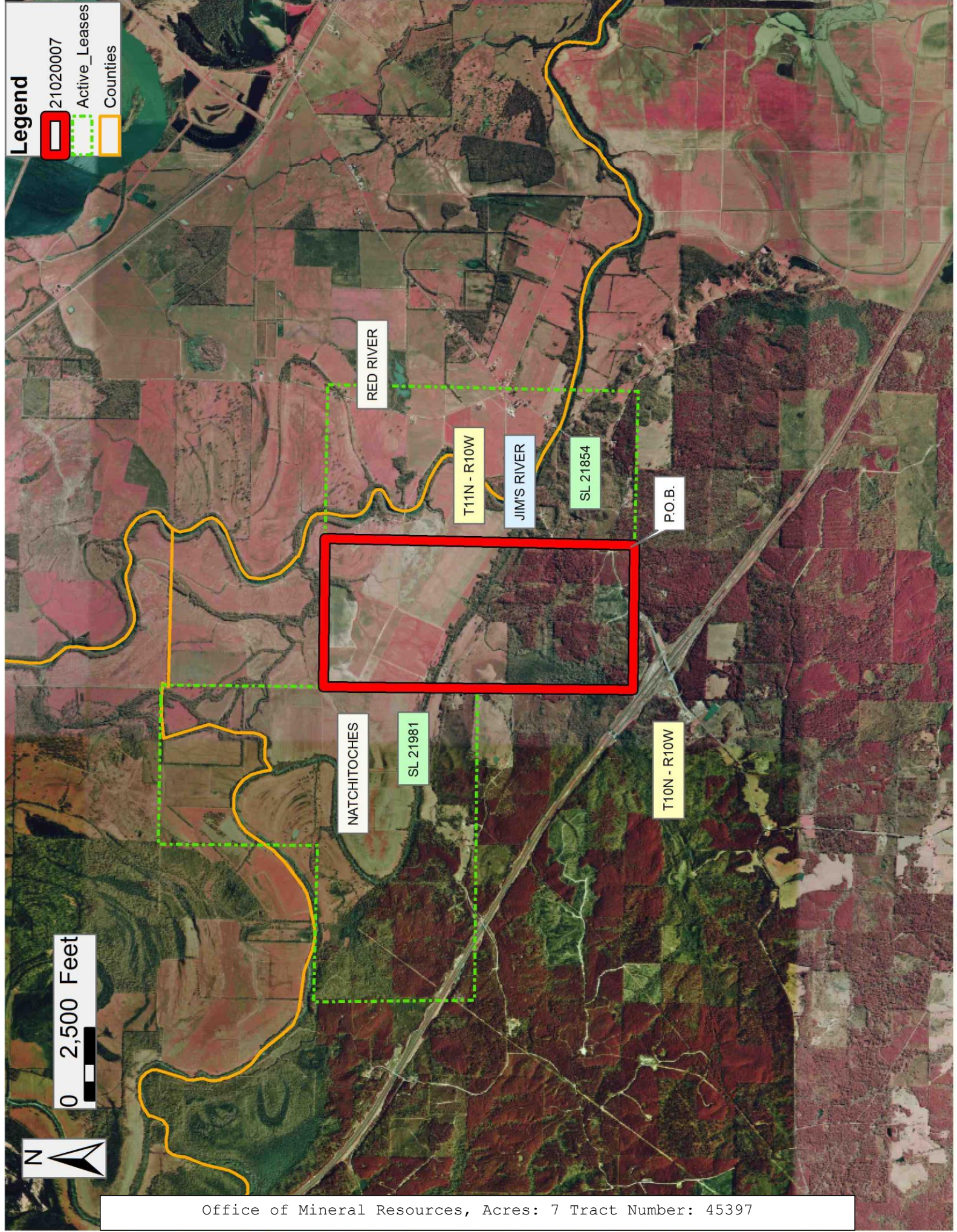
Bidder	Cash Payment	Price/Acre	Rental	Oil	Gas	Other

Legend

- 21020007
- Active_Leases
- Counties



0 2,500 Feet



Office of Mineral Resources, Acres: 7 Tract Number: 45397

TRACT 45398 - Calcasieu and Jefferson Davis Parishes, Louisiana

All of the lands now or formerly constituting the beds and bottoms of all water bodies of every nature and description as to which title is vested in the State of Louisiana, together with all islands arising therein and other lands formed by accretion or by reliction, where allowed by law, excepting tax adjudicated lands, and not presently under mineral lease on February 10, 2021, situated in Calcasieu and Jefferson Davis Parishes, Louisiana, and more particularly described as follows: Beginning at a point having Coordinates X = 1,506,485.34 and Y = 539,610.88; thence South 89 degrees 11 minutes 59 seconds East 5,289.17 feet to a point having Coordinates of X = 1,511,774.00 and Y = 539,537.01; thence South 01 degrees 18 minutes 07 seconds West 5,473.27 feet to a point having Coordinates of X = 1,511,649.65 and Y = 534,065.15; thence North 89 degrees 32 minutes 16 seconds West 5,301.71 feet to a point having Coordinates of X = 1,506,348.11 and Y = 534,107.92; thence North 01 degrees 25 minutes 43 seconds East 5,504.67 feet to the point of beginning, containing approximately **9 acres**, all as more particularly outlined on a plat on file in the Office of Mineral Resources, Department of Natural Resources. All bearings, distances and coordinates are based on Louisiana Coordinate System of 1927, (North or South Zone), where applicable.

NOTE: The above description of the Tract nominated for lease has been provided and corrected, where required, exclusively by the nomination party. Any mineral lease selected from this Tract and awarded by the Louisiana State Mineral and Energy Board shall be without warranty of any kind, either express, implied, or statutory, including, but not limited to, the implied warranties of merchantability and fitness for a particular purpose. Should the mineral lease awarded by the Louisiana State Mineral and Energy Board be subsequently modified, cancelled or abrogated due to the existence of conflicting leases, operating agreements, private claims or other future obligations or conditions which may affect all or any portion of the leased Tract, it shall not relieve the Lessee of the obligation to pay any bonus due thereon to the Louisiana State Mineral and Energy Board, nor shall the Louisiana State Mineral and Energy Board be obligated to refund any consideration paid by the Lessor prior to such modification, cancellation, or abrogation, including, but not limited to, bonuses, rentals and royalties.

Applicant: RELIATERRE, LLC

Bidder	Cash Payment	Price/Acre	Rental	Oil	Gas	Other

Legend



21020003



Counties



0 2,000 Feet

Office of Mineral Resources, Acres: 9 Tract Number: 45398

JEFFERSON DAVIS

BAYOU LACASSINE

CALCASIEU

P.O.B.

T10S - R5W

T11S - R5W

