

TRACT 45406 - Portion of Block 5, South Pass Area, Plaquemines Parish, Louisiana

The beds and bottoms of all water bodies belonging to the State of Louisiana located in Block 5, South Pass Area, together with any present lands formed by accretion to the shoreline or islands formed therein, located in Plaquemines Parish, Louisiana, owned by and not presently under mineral lease as of April 14, 2021, from the State of Louisiana, the geographical area of which is more fully described as follows: Beginning at a point having Coordinates of X = 2,748,750.00 and Y = 173,761.10; thence South 2,810.70 feet to a point having Coordinates of X = 2,748,750.00 and Y = 170,950.40; thence West 10,021.76 feet to a point on the Eastern boundary of Pass-A-Loutre Wildlife Management Area having Coordinates of X = 2,738,728.24 and Y = 170,950.40; thence North 27 degrees 15 minutes 54 seconds East 3,162.00 feet along the Eastern boundary of said Pass-A-Loutre Wildlife Management Area to a point having Coordinates X = 2,740,176.76 and Y = 173,761.10; thence East 8,573.24 feet to the point of beginning, containing approximately **599.92 acres**, all as more particularly outlined on a plat on file in the Office of Mineral Resources, Department of Natural Resources. All bearings, distances and coordinates are based on Louisiana Coordinate System of 1927, (North or South Zone).

NOTE: The above description of the Tract nominated for lease has been provided and corrected, where required, exclusively by the nomination party. Any mineral lease selected from this Tract and awarded by the Louisiana State Mineral and Energy Board shall be without warranty of any kind, either express, implied, or statutory, including, but not limited to, the implied warranties of merchantability and fitness for a particular purpose. Should the mineral lease awarded by the Louisiana State Mineral and Energy Board be subsequently modified, cancelled or abrogated due to the existence of conflicting leases, operating agreements, private claims or other future obligations or conditions which may affect all or any portion of the leased Tract, it shall not relieve the Lessee of the obligation to pay any bonus due thereon to the Louisiana State Mineral and Energy Board, nor shall the Louisiana State Mineral and Energy Board be obligated to refund any consideration paid by the Lessor prior to such modification, cancellation, or abrogation, including, but not limited to, bonuses, rentals and royalties.

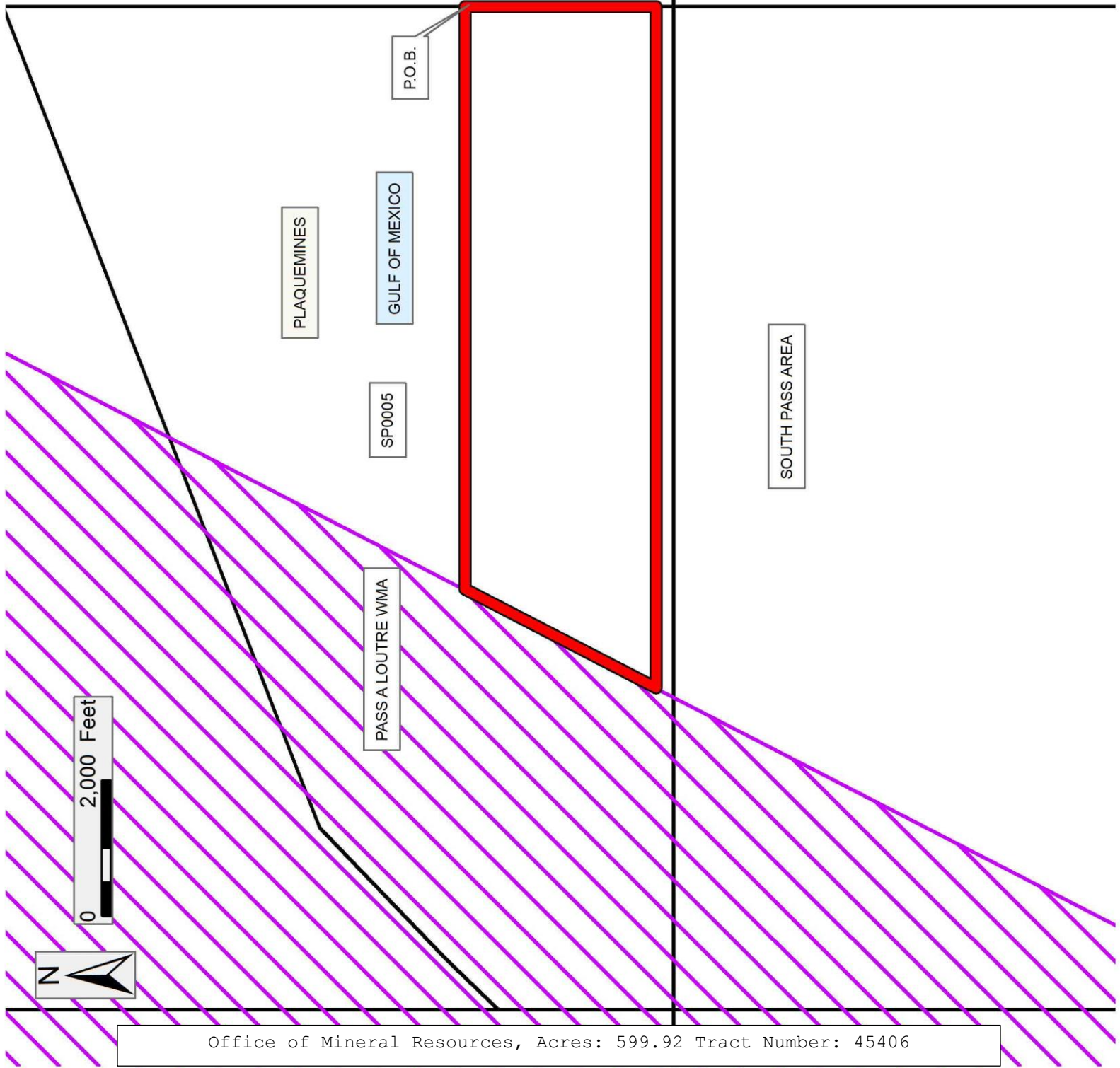
NOTE: The State of Louisiana does hereby reserve, and this lease shall be subject to, the imprescriptible right of surface use in the nature of a servitude in favor of the Department of Natural Resources, including its Offices and Commissions, for the sole purpose of implementing, constructing, servicing and maintaining approved coastal zone management and/or restoration projects. Utilization of any and all rights derived under this lease by the mineral lessee, its agents, successors or assigns, shall not interfere with nor hinder the reasonable surface use by the Department of Natural Resources, its Offices or Commissions, as herein above reserved.

Applicant: CYPRESS ENERGY CORPORATION

Bidder	Cash Payment	Price/Acre	Rental	Oil	Gas	Other

Legend

- 21040005
- Wildlife
- Blocks



Office of Mineral Resources, Acres: 599.92 Tract Number: 45406

TRACT 45407 - Portion of Blocks 5, and 6, South Pass Area, Plaquemines Parish, Louisiana

The beds and bottoms of all water bodies belonging to the State of Louisiana located in Blocks 5, and 6, South Pass Area, together with any present lands formed by accretion to the shoreline or islands formed therein, located in Plaquemines Parish, Louisiana, owned by and not presently under mineral lease as of April 14, 2021, from the State of Louisiana, the geographical area of which is more fully described as follows: Beginning at a point having Coordinates of X = 2,748,750.00 and Y = 170,950.40; thence South 7,040.80 feet to a point having Coordinates of X = 2,748,750.00 and Y = 163,909.60; thence West 13,650.33 feet to a point on the Eastern boundary of Pass-A-Loutre Wildlife Management Area having Coordinates of X = 2,735,099.67 and Y = 163,909.60; thence North 27 degrees 15 minutes 54 seconds East 7,920.82 feet along the Eastern boundary of said Pass-A-Loutre Wildlife Management Area to a point having Coordinates X = 2,738,728.24 and Y = 170,950.40; thence East 10,021.76 feet to the point of beginning, containing approximately **1,913.11 acres**, all as more particularly outlined on a plat on file in the Office of Mineral Resources, Department of Natural Resources. All bearings, distances and coordinates are based on Louisiana Coordinate System of 1927, (North or South Zone).

NOTE: The above description of the Tract nominated for lease has been provided and corrected, where required, exclusively by the nomination party. Any mineral lease selected from this Tract and awarded by the Louisiana State Mineral and Energy Board shall be without warranty of any kind, either express, implied, or statutory, including, but not limited to, the implied warranties of merchantability and fitness for a particular purpose. Should the mineral lease awarded by the Louisiana State Mineral and Energy Board be subsequently modified, cancelled or abrogated due to the existence of conflicting leases, operating agreements, private claims or other future obligations or conditions which may affect all or any portion of the leased Tract, it shall not relieve the Lessee of the obligation to pay any bonus due thereon to the Louisiana State Mineral and Energy Board, nor shall the Louisiana State Mineral and Energy Board be obligated to refund any consideration paid by the Lessor prior to such modification, cancellation, or abrogation, including, but not limited to, bonuses, rentals and royalties.

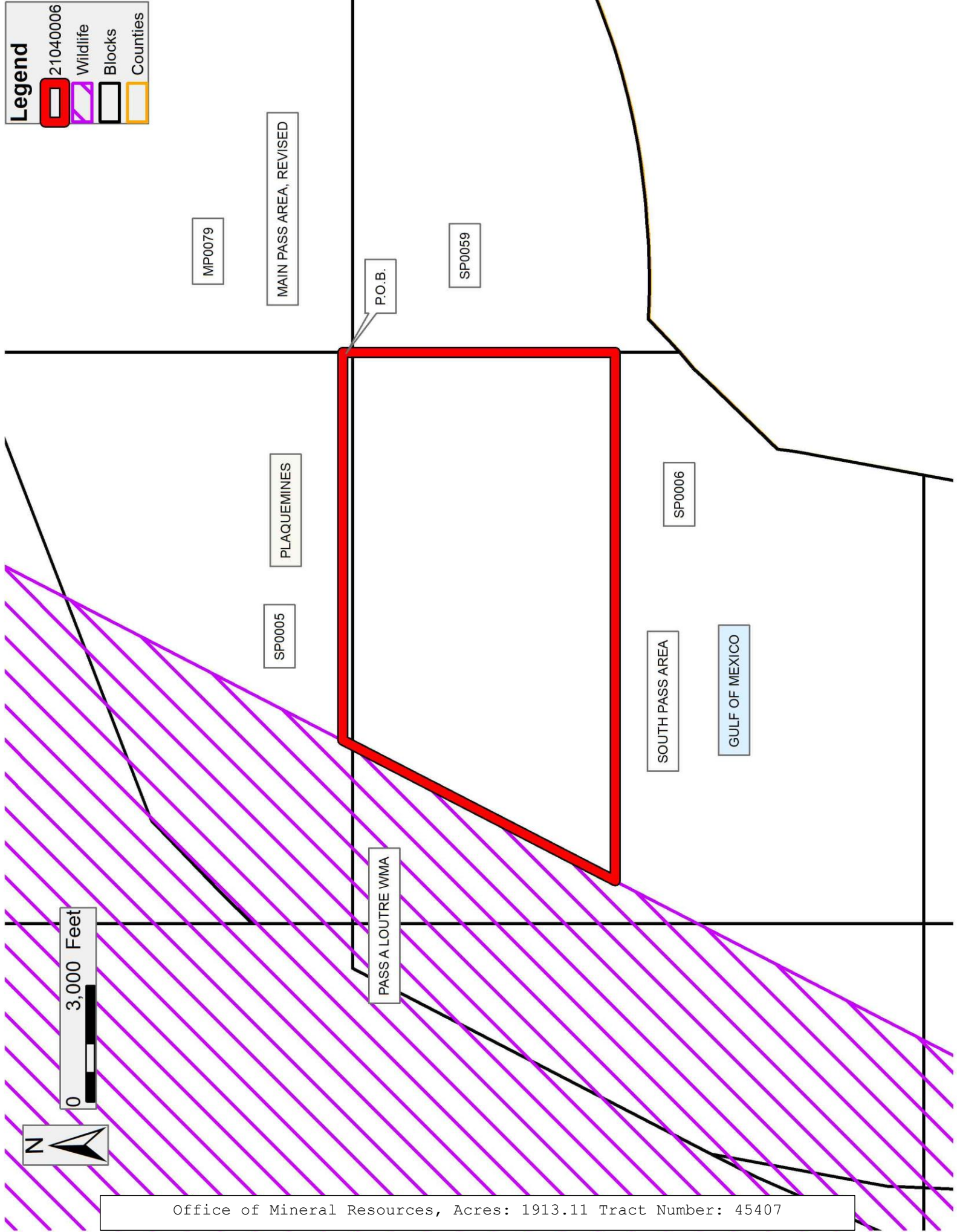
NOTE: The State of Louisiana does hereby reserve, and this lease shall be subject to, the imprescriptible right of surface use in the nature of a servitude in favor of the Department of Natural Resources, including its Offices and Commissions, for the sole purpose of implementing, constructing, servicing and maintaining approved coastal zone management and/or restoration projects. Utilization of any and all rights derived under this lease by the mineral lessee, its agents, successors or assigns, shall not interfere with nor hinder the reasonable surface use by the Department of Natural Resources, its Offices or Commissions, as herein above reserved.

Applicant: CYPRESS ENERGY CORPORATION

Bidder	Cash Payment	Price/Acre	Rental	Oil	Gas	Other

Legend

- 21040006
- Wildlife
- Blocks
- Counties



0 3,000 Feet



Office of Mineral Resources, Acres: 1913.11 Tract Number: 45407

TRACT 45408 - Portion of Blocks 6, and 7, South Pass Area, Plaquemines Parish, Louisiana

The beds and bottoms of all water bodies belonging to the State of Louisiana located in Blocks 6, and 7, South Pass Area, together with any present lands formed by accretion to the shoreline or islands formed therein, located in Plaquemines Parish, Louisiana, owned by and not presently under mineral lease as of April 14, 2021, from the State of Louisiana, the geographical area of which is more fully described as follows: Beginning at a point having Coordinates of X = 2,748,750.00 and Y = 163,909.60; thence South 1,667.75 feet to a point on the Three Mile Line, as decreed by the Supreme Court of the United States, as determined by a Special Master appointed therein, in litigation styled *United States v. State of Louisiana et al No. 9 Original*, in 1975, having Coordinates of X = 2,748,750.00 and Y = 162,241.85; thence along the boundary of said Three Mile Decree the following courses: Southwesterly along an arc with a radius of 18,240.60 feet and a center of X = 2,736,662 and Y = 175,902 to a point having Coordinates of X = 2,748,316 and Y = 161,869, Southwesterly along an arc with a radius of 18,240.60 feet and a center of X = 2,734,720 and Y = 174,030 to a point having Coordinates of X = 2,747,824 and Y = 161,341, Southwesterly along a straight line to a point having Coordinates of X = 2,746,249 and Y = 159,715, Southwesterly along an arc with a radius of 18,240.60 feet and a center of X = 2,728,153 and Y = 162,005 to a point having Coordinates of X = 2,746,094 and Y = 158,715 and Southwesterly along a straight line to a point having Coordinates of X = 2,745,796.65 and Y = 157,093.50; thence West 14,209.73 feet to a point on the Eastern boundary of Pass-A-Loutre Wildlife Management Area having Coordinates of X = 2,731,586.91 and Y = 157,093.50; thence North 27 degrees 15 minutes 54 seconds East 7,668.03 feet along the Eastern boundary of said Pass-A-Loutre Wildlife Management Area to a point having Coordinates X = 2,735,099.67 and Y = 163,909.60; thence East 13,650.33 feet to the point of beginning, containing approximately **2,173.27 acres, LESS AND EXCEPT** that portion thereof, if any, lying seaward of the line three nautical miles from the coast line of Louisiana, as said three mile line has been decreed by the Supreme Court of the United States, as determined by a Special Master appointed therein, in litigation styled **United States v. State of Louisiana et al No. 9 Original**, in 1975, all as more particularly outlined on a plat in the Office of Mineral Resources, Department of Natural Resources. All bearings, distances and coordinates are based on the Louisiana Coordinate System of 1927, (South Zone).

NOTE: The above description of the Tract nominated for lease has been provided and corrected, where required, exclusively by the nomination party. Any mineral lease selected from this Tract and awarded by the Louisiana State Mineral and Energy Board shall be without warranty of any kind, either express, implied, or statutory, including, but not limited to, the implied warranties of merchantability and fitness for a particular purpose. Should the mineral lease awarded by the Louisiana State Mineral and Energy Board be subsequently modified, cancelled or abrogated due to the existence of conflicting leases, operating agreements, private claims or other future obligations or conditions which may affect all or any portion of the leased

Tract, it shall not relieve the Lessee of the obligation to pay any bonus due thereon to the Louisiana State Mineral and Energy Board, nor shall the Louisiana State Mineral and Energy Board be obligated to refund any consideration paid by the Lessor prior to such modification, cancellation, or abrogation, including, but not limited to, bonuses, rentals and royalties.

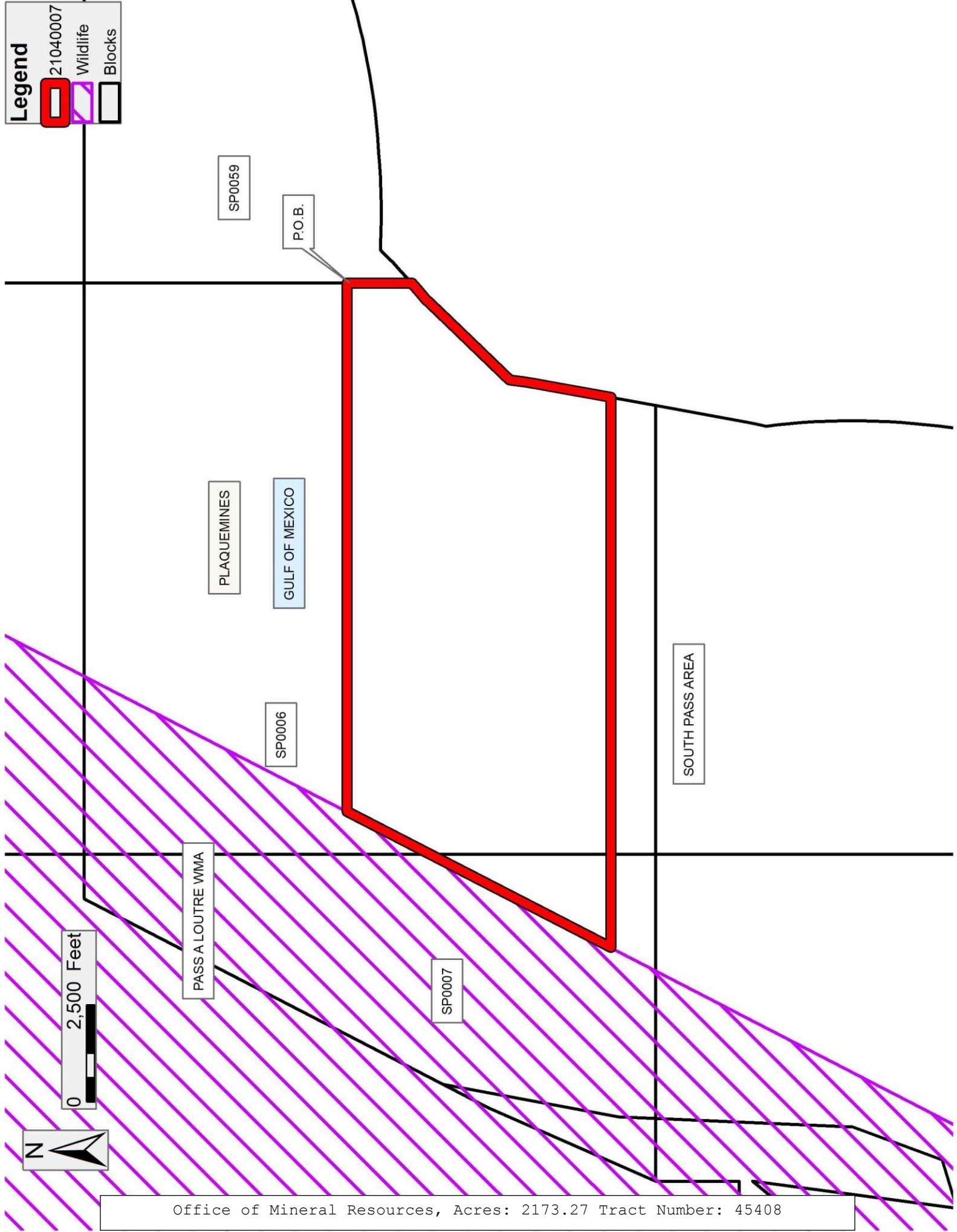
NOTE: The State of Louisiana does hereby reserve, and this lease shall be subject to, the imprescriptible right of surface use in the nature of a servitude in favor of the Department of Natural Resources, including its Offices and Commissions, for the sole purpose of implementing, constructing, servicing and maintaining approved coastal zone management and/or restoration projects. Utilization of any and all rights derived under this lease by the mineral lessee, its agents, successors or assigns, shall not interfere with nor hinder the reasonable surface use by the Department of Natural Resources, its Offices or Commissions, as herein above reserved.

Applicant: CYPRESS ENERGY CORPORATION

Bidder	Cash Payment	Price/Acre	Rental	Oil	Gas	Other

Legend

- 21040007
- Wildlife
- Blocks



Office of Mineral Resources, Acres: 2173.27 Tract Number: 45408