

TRACT 45409 - Lafourche Parish, Louisiana

All of the lands now or formerly constituting the beds and bottoms of all water bodies of every nature and description as to which title is vested in the State of Louisiana, together with all islands arising therein and other lands formed by accretion or by reliction, where allowed by law, excepting tax adjudicated lands, and not presently under mineral lease on April 14, 2021, situated in Lafourche Parish, Louisiana, and more particularly described as follows: Beginning at a point having Coordinates of X = 2,334,336.97 and Y = 210,256.59; thence North 87 degrees 11 minutes 02 seconds East 17,919.66 feet to a point having Coordinates of X = 2,352,234.99 and Y = 211,137.04; thence South 02 degrees 48 minutes 59 seconds East 5,828.33 feet to a point having Coordinates of X = 2,352,521.35 and Y = 205,315.75; thence West 2,296.35 feet to a point having Coordinates of X = 2,350,225.00 and Y = 205,315.75; thence South 00 degrees 07 minutes 15 seconds West 3,638.79 feet to a point having Coordinates of X = 2,350,217.32 and Y = 201,676.97; thence South 88 degrees 32 minutes 02 seconds West 15,443.92 feet to a point having Coordinates of X = 2,334,778.46 and Y = 201,281.82; thence North 02 degrees 48 minutes 59 seconds West 8,985.63 feet to the point of beginning, (This lease includes only waterbottoms claimed and owned by the state and specifically excludes any land which the state may claim or own and to which the mineral rights are vested in the state), containing approximately **2,499 acres**, all as more particularly outlined on a plat on file in the Office of Mineral Resources, Department of Natural Resources. All bearings, distances and coordinates are based on Louisiana Coordinate System of 1927, (North or South Zone), where applicable.

NOTE: The above description of the Tract nominated for lease has been provided and corrected, where required, exclusively by the nomination party. Any mineral lease selected from this Tract and awarded by the Louisiana State Mineral and Energy Board shall be without warranty of any kind, either express, implied, or statutory, including, but not limited to, the implied warranties of merchantability and fitness for a particular purpose. Should the mineral lease awarded by the Louisiana State Mineral and Energy Board be subsequently modified, cancelled or abrogated due to the existence of conflicting leases, operating agreements, private claims or other future obligations or conditions which may affect all or any portion of the leased Tract, it shall not relieve the Lessee of the obligation to pay any bonus due thereon to the Louisiana State Mineral and Energy Board, nor shall the Louisiana State Mineral and Energy Board be obligated to refund any consideration paid by the Lessor prior to such modification, cancellation, or abrogation, including, but not limited to, bonuses, rentals and royalties.

NOTE: The State of Louisiana does hereby reserve, and this lease shall be subject to, the imprescriptible right of surface use in the nature of a servitude in favor of the Department of Natural Resources, including its Offices and Commissions, for the sole purpose of implementing, constructing, servicing and maintaining approved coastal zone management and/or restoration projects. Utilization of any and all rights derived under this lease by the mineral lessee, its agents, successors or assigns, shall not

interfere with nor hinder the reasonable surface use by the Department of Natural Resources, its Offices or Commissions, as herein above reserved.

Applicant: ALLEN & KIRMSE, LTD.

Bidder	Cash Payment	Price/Acre	Rental	Oil	Gas	Other



0 2,500 Feet

Legend

21040001



LAFOURCHE

LITTLE LAKE

T21S - R22E

PICKETT BAY

TIMBALIER BAY

P.O.B.

TRACT 45410 - Lafourche Parish, Louisiana

All of the lands now or formerly constituting the beds and bottoms of all water bodies of every nature and description as to which title is vested in the State of Louisiana, together with all islands arising therein and other lands formed by accretion or by reliction, where allowed by law, excepting tax adjudicated lands, and not presently under mineral lease on April 14, 2021, situated in Lafourche Parish, Louisiana, and more particularly described as follows: Beginning at a point having Coordinates of X = 2,317,772.72 and Y = 206,665.13; thence East 9,288.28 feet to a point having Coordinates of X = 2,327,061.00 and Y = 206,665.13; thence South 10,629.30 feet to a point having Coordinates of X = 2,327,061.00 and Y = 196,036.82; thence West 12,137.24 feet to the Northeast corner of State Lease No. 3258, as amended, having Coordinates of X = 2,314,923.76 and Y = 196,036.82; thence South 89 degrees 30 minutes 18 seconds West 1,317.37 feet along the Northern boundary of said State Lease No. 3258 to a point having Coordinates of X = 2,313,606.44 and Y = 196,024.45; thence North 2,317.75 feet to a point on the boundary of State Lease No. 1480, as amended, having Coordinates of X = 2,313,606.44 and Y = 198,342.20; thence along the boundary of said State Lease No. 1480 the following courses and distances: North 63 degrees 17 minutes 36 seconds East 2,167.68 feet to a point having Coordinates of X = 2,315,542.87 and Y = 199,316.41, South 1,172.45 feet to a point having Coordinates of X = 2,315,542.87 and Y = 198,143.96, East 2,287.55 feet to a point having Coordinates of X = 2,317,830.42 and Y = 198,143.96, and North 00 degrees 29 minutes 42 seconds West 6,679.60 feet to a point having Coordinates of X = 2,317,772.72 and Y = 204,823.31; thence North 1,841.82 feet to the point of beginning, containing approximately **2,494.04 acres**, all as more particularly outlined on a plat on file in the Office of Mineral Resources, Department of Natural Resources. All bearings, distances and coordinates are based on Louisiana Coordinate System of 1927, (North or South Zone), where applicable.

NOTE: The above description of the Tract nominated for lease has been provided and corrected, where required, exclusively by the nomination party. Any mineral lease selected from this Tract and awarded by the Louisiana State Mineral and Energy Board shall be without warranty of any kind, either express, implied, or statutory, including, but not limited to, the implied warranties of merchantability and fitness for a particular purpose. Should the mineral lease awarded by the Louisiana State Mineral and Energy Board be subsequently modified, cancelled or abrogated due to the existence of conflicting leases, operating agreements, private claims or other future obligations or conditions which may affect all or any portion of the leased Tract, it shall not relieve the Lessee of the obligation to pay any bonus due thereon to the Louisiana State Mineral and Energy Board, nor shall the Louisiana State Mineral and Energy Board be obligated to refund any consideration paid by the Lessor prior to such modification, cancellation, or abrogation, including, but not limited to, bonuses, rentals and royalties.

NOTE: The State of Louisiana does hereby reserve, and this lease shall be subject to, the imprescriptible right of surface use in the nature of a

servitude in favor of the Department of Natural Resources, including its Offices and Commissions, for the sole purpose of implementing, constructing, servicing and maintaining approved coastal zone management and/or restoration projects. Utilization of any and all rights derived under this lease by the mineral lessee, its agents, successors or assigns, shall not interfere with nor hinder the reasonable surface use by the Department of Natural Resources, its Offices or Commissions, as herein above reserved.

Applicant: LOUISIANA BAYOU OIL & GAS CO.

Bidder	Cash Payment	Price/Acre	Rental	Oil	Gas	Other

Legend

21040010



Active_Leases



0 2,500 Feet



LAFOURCHE

P.O.B.

SL 1480

SL 3258

TIMBALIER BAY

TRACT 45411 - Lafourche Parish, Louisiana

All of the lands now or formerly constituting the beds and bottoms of all water bodies of every nature and description as to which title is vested in the State of Louisiana, together with all islands arising therein and other lands formed by accretion or by reliction, where allowed by law, excepting tax adjudicated lands, and not presently under mineral lease on April 14, 2021, situated in Lafourche Parish, Louisiana, and more particularly described as follows: Beginning at a point having Coordinates of X = 2,298,501.97 and Y = 203,443.92; thence East 15,055.50 feet to a point having Coordinates of X = 2,313,557.47 and Y = 203,443.92; thence South 2,365.02 feet to the Northwest corner of the Northern portion of State Lease No. 1480, as amended, having Coordinates of X = 2,313,557.47 and Y = 201,078.90; thence along the boundary of said State Lease No. 1480 the following courses and distances: South 03 degrees 41 minutes 20 seconds East 454.47 feet to a point having Coordinates of X = 2,313,586.71 and Y = 200,625.37, and South 00 degrees 29 minutes 42 seconds East 2,283.26 feet to its Southwest corner, having Coordinates of X = 2,313,606.44 and Y = 198,342.20; thence South 2,317.75 feet to a point on the North boundary of State Lease No. 3258, as amended, having Coordinates of X = 2,313,606.44 and Y = 196,024.45; thence along the boundary of said State Lease No. 3258 the following courses and distances: South 89 degrees 30 minutes 19 seconds West 375.15 feet to a point having Coordinates of X = 2,313,231.30 and Y = 196,021.21, South 43 degrees 31 minutes 57 seconds West 2,906.95 feet to a point having Coordinates of X = 2,311,229.09 and Y = 193,913.72 and South 00 degrees 01 minutes 30 seconds West 23.03 feet to a point on the Northern boundary of State Lease No. 21950, having Coordinates of X = 2,311,229.08 and Y = 193,890.69; thence West 2,676.51 feet along said boundary of said State Lease No. 21950 to a point on the boundary of State Lease No. 14703, as amended, having Coordinates of X = 2,308,552.57 and Y = 193,890.69; thence along the boundary of said State Lease No. 14703 the following courses and distances: North 43 degrees 30 minutes 10 seconds East 437.59 feet to a point having Coordinates of X = 2,308,853.80 and Y = 194,208.09, North 43 degrees 10 minutes 42 seconds East 2,455.76 feet to a point having Coordinates of X = 2,310,534.21 and Y = 195,998.90 and North 43 degrees 10 minutes 45 seconds East 325.80 feet to a point on the boundary of the Southern portion of State Lease No. 1480, as amended, having Coordinates of X = 2,310,757.15 and Y = 196,236.48; thence along the boundary of said State Lease No. 1480 the following courses and distances: North 31 degrees 20 minutes 43 seconds West 2,037.70 feet to a point having Coordinates of X = 2,309,697.15 and Y = 197,976.77, South 84 degrees 46 minutes 17 seconds West 2,024.53 feet to a point having Coordinates of X = 2,307,681.04 and Y = 197,792.28, South 81 degrees 46 minutes 26 seconds West 1,105.08 feet to a point having Coordinates of X = 2,306,587.33 and Y = 197,634.16, South 77 degrees 05 minutes 33 seconds West 648.90 feet to a point having Coordinates of X = 2,305,954.83 and Y = 197,489.21, South 68 degrees 11 minutes 55 seconds West 851.53 feet to a point having Coordinates of X = 2,305,164.20 and Y = 197,172.96, South 64 degrees 51 minutes 17 seconds West 713.27 feet to a point having Coordinates of X = 2,304,518.52 and Y = 196,869.88 and South 63 degrees 06 minutes 14 seconds West 901.62 feet to a point on the boundary of State Lease No. 21988

having Coordinates of X = 2,303,714.43 and Y = 196,462.01; thence along the boundary of said State Lease No. 21988 the following courses and distances: South 63 degrees 06 minutes 17 seconds West 117.89 feet to a point having Coordinates of X = 2,303,609.29 and Y = 196,408.68, and South 66 degrees 06 minutes 18 seconds West 832.91 feet to a point on the Northeast boundary of State Lease No. 3599, as amended, having Coordinates of X = 2,302,847.77 and Y = 196,071.30; thence along the boundary of said State Lease No. 3599 the following courses and distances: North 00 degrees 29 minutes 42 seconds West 266.20 feet to a point having Coordinates of X = 2,302,845.47 and Y = 196,337.49 and South 89 degrees 30 minutes 18 seconds West 4,416.01 feet to a point having Coordinates of X = 2,298,429.62 and Y = 196,299.34; thence North 00 degrees 38 minutes 37 seconds East 6,441.37 feet to a point on the boundary of State Lease No. 20892, having Coordinates of X = 2,298,501.97 and Y = 202,740.30; thence North 703.62 feet to the point of beginning, containing approximately **2,443.93 acres**, all as more particularly outlined on a plat on file in the Office of Mineral Resources, Department of Natural Resources. All bearings, distances and coordinates are based on Louisiana Coordinate System of 1927, (North or South Zone), where applicable.

NOTE: The above description of the Tract nominated for lease has been provided and corrected, where required, exclusively by the nomination party. Any mineral lease selected from this Tract and awarded by the Louisiana State Mineral and Energy Board shall be without warranty of any kind, either express, implied, or statutory, including, but not limited to, the implied warranties of merchantability and fitness for a particular purpose. Should the mineral lease awarded by the Louisiana State Mineral and Energy Board be subsequently modified, cancelled or abrogated due to the existence of conflicting leases, operating agreements, private claims or other future obligations or conditions which may affect all or any portion of the leased Tract, it shall not relieve the Lessee of the obligation to pay any bonus due thereon to the Louisiana State Mineral and Energy Board, nor shall the Louisiana State Mineral and Energy Board be obligated to refund any consideration paid by the Lessor prior to such modification, cancellation, or abrogation, including, but not limited to, bonuses, rentals and royalties.

NOTE: The State of Louisiana does hereby reserve, and this lease shall be subject to, the imprescriptible right of surface use in the nature of a servitude in favor of the Department of Natural Resources, including its Offices and Commissions, for the sole purpose of implementing, constructing, servicing and maintaining approved coastal zone management and/or restoration projects. Utilization of any and all rights derived under this lease by the mineral lessee, its agents, successors or assigns, shall not interfere with nor hinder the reasonable surface use by the Department of Natural Resources, its Offices or Commissions, as herein above reserved.

Applicant: LOUISIANA BAYOU OIL & GAS CO.

Bidder	Cash Payment	Price/Acre	Rental	Oil	Gas	Other

Legend



21040009

Active_Leases



0 2,000 Feet

LAFOURCHE

P.O.B.

SL 20892



SL 1480

SL 1480

SL 14703

SL 3258

SL 21988

SL 3258

SL 3599

TIMBALIER BAY

SL 21950

LAKE RACCOURCI

TRACT 45412 - Lafourche and Terrebonne Parishes, Louisiana

All of the lands now or formerly constituting the beds and bottoms of all water bodies of every nature and description as to which title is vested in the State of Louisiana, together with all islands arising therein and other lands formed by accretion or by reliction, where allowed by law, excepting tax adjudicated lands, and not presently under mineral lease on April 14, 2021, situated in Lafourche and Terrebonne Parishes, Louisiana, and more particularly described as follows: Beginning at a point having Coordinates of X = 2,291,811.00 and Y = 197,099.31; thence East 6,627.60 feet to a point having Coordinates of X = 2,298,438.60 and Y = 197,099.31; thence South 00 degrees 38 minutes 35 seconds West 800.02 feet to the Northwest corner of State Lease No. 3599, as amended, having Coordinates of X = 2,298,429.62 and Y = 196,299.34; thence South 49 degrees 19 minutes 18 seconds East 3,073.75 feet along the boundary of said State Lease No. 3599 to the most Northern point of State Lease No. 21989 having Coordinates of X = 2,300,760.69 and Y = 194,295.83; thence along the boundary of said State Lease No. 21989 the following courses and distances: South 00 degrees 38 minutes 34 seconds West 41.90 feet to a point having Coordinates of X = 2,300,760.22 and Y = 194,253.94, South 16 degrees 06 minutes 31 seconds East 505.47 feet to a point having Coordinates of X = 2,300,900.47 and Y = 193,768.31, South 37 degrees 03 minutes 16 seconds East 508.87 feet to a point having Coordinates of X = 2,301,207.10 and Y = 193,362.20, South 49 degrees 20 minutes 10 seconds East 504.56 feet to a point having Coordinates of X = 2,301,589.83 and Y = 193,033.42, South 62 degrees 25 minutes 02 seconds East 499.00 feet to a point having Coordinates of X = 2,302,032.11 and Y = 192,802.37, South 75 degrees 47 minutes 38 seconds East 492.15 feet to a point having Coordinates of X = 2,302,509.21 and Y = 192,681.59, and South 77 degrees 15 minutes 43 seconds East 180.36 feet to a point on the boundary of said State Lease No. 3599, having Coordinates of X = 2,302,685.14 and Y = 192,641.82; thence South 49 degrees 19 minutes 18 seconds East 6,212.45 feet along said boundary of said State Lease No. 3599 to a point having Coordinates of X = 2,307,396.54 and Y = 188,592.47; thence South 1,071.15 feet to a point having Coordinates of X = 2,307,396.54 and Y = 187,521.32; thence West 15,585.54 feet to a point having Coordinates of X = 2,291,811.00 and Y = 187,521.32; thence North 9,577.99 feet to the point of beginning, **LESS AND EXCEPT** any Vacant State Lands that may lie within the above described tract, containing approximately **2,446 acres**, all as more particularly outlined on a plat on file in the Office of Mineral Resources, Department of Natural Resources. All bearings, distances and coordinates are based on Louisiana Coordinate System of 1927, (North or South Zone), where applicable.

NOTE: The above description of the Tract nominated for lease has been provided and corrected, where required, exclusively by the nomination party. Any mineral lease selected from this Tract and awarded by the Louisiana State Mineral and Energy Board shall be without warranty of any kind, either express, implied, or statutory, including, but not limited to, the implied warranties of merchantability and fitness for a particular purpose. Should the mineral lease awarded by the Louisiana State Mineral and Energy Board be subsequently modified, cancelled or abrogated due to the existence of

conflicting leases, operating agreements, private claims or other future obligations or conditions which may affect all or any portion of the leased Tract, it shall not relieve the Lessee of the obligation to pay any bonus due thereon to the Louisiana State Mineral and Energy Board, nor shall the Louisiana State Mineral and Energy Board be obligated to refund any consideration paid by the Lessor prior to such modification, cancellation, or abrogation, including, but not limited to, bonuses, rentals and royalties.

NOTE: The State of Louisiana does hereby reserve, and this lease shall be subject to, the imprescriptible right of surface use in the nature of a servitude in favor of the Department of Natural Resources, including its Offices and Commissions, for the sole purpose of implementing, constructing, servicing and maintaining approved coastal zone management and/or restoration projects. Utilization of any and all rights derived under this lease by the mineral lessee, its agents, successors or assigns, shall not interfere with nor hinder the reasonable surface use by the Department of Natural Resources, its Offices or Commissions, as herein above reserved.

Applicant: LOUISIANA BAYOU OIL AND GAS CO.

Bidder	Cash Payment	Price/Acre	Rental	Oil	Gas	Other

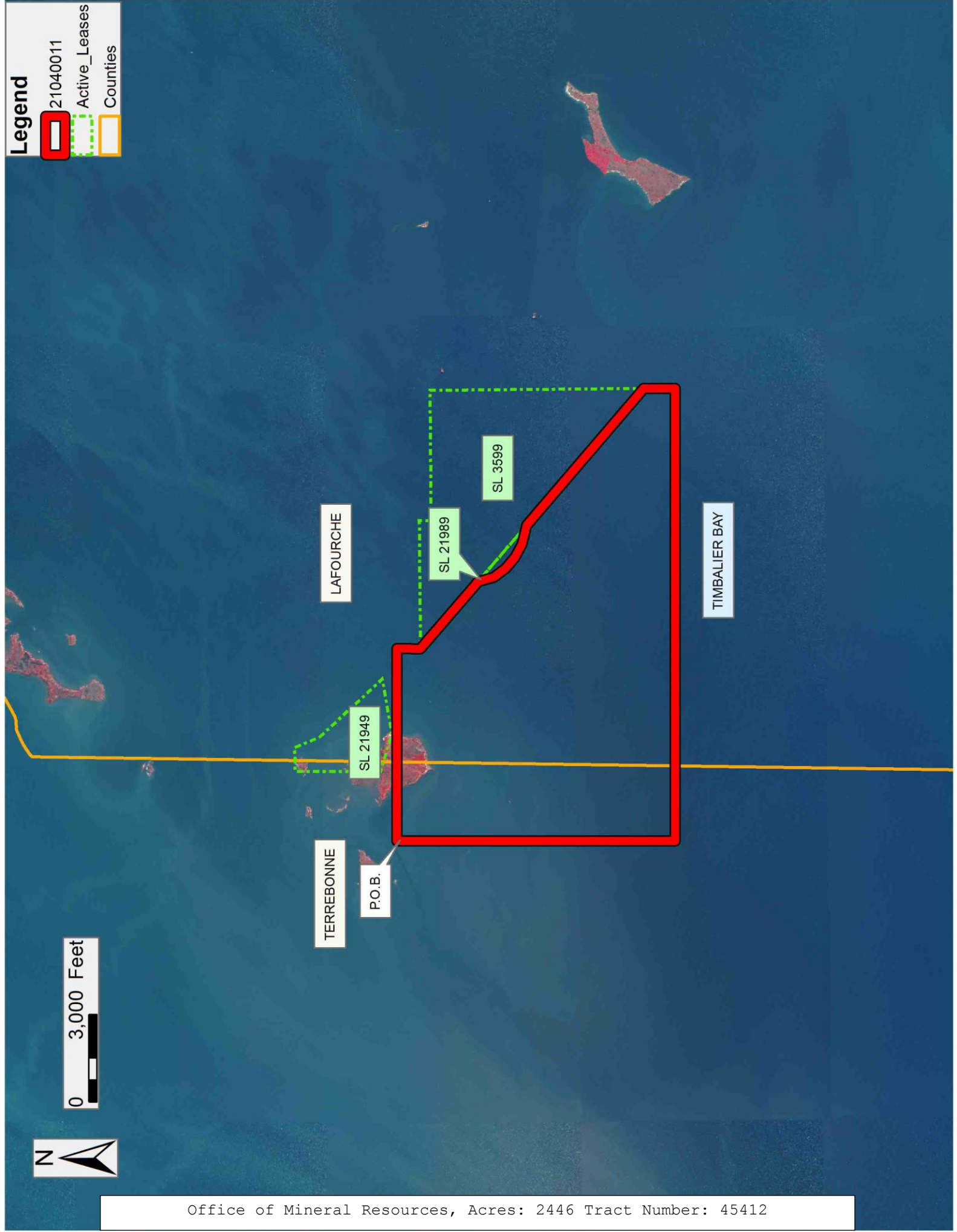
Legend

- 21040011
- Active_Leases
- Countries



0 3,000 Feet

Office of Mineral Resources, Acres: 2446 Tract Number: 45412



TRACT 45413 - Lafourche Parish, Louisiana

All of the lands now or formerly constituting the beds and bottoms of all water bodies of every nature and description as to which title is vested in the State of Louisiana, together with all islands arising therein and other lands formed by accretion or by reliction, where allowed by law, excepting tax adjudicated lands, and not presently under mineral lease on April 14, 2021, situated in Lafourche Parish, Louisiana, and more particularly described as follows: Beginning at the Northeast corner of State Lease No. 3258, as amended, having Coordinates of X = 2,314,923.76 and Y = 196,036.82; thence East 9,851.24 feet to a point having Coordinates of X = 2,324,775.00 and Y = 196,036.82; thence South 8,515.50 feet to a point having Coordinates of X = 2,324,775.00 and Y = 187,521.32; thence West 17,378.46 feet to a point having Coordinates of X = 2,307,396.54 and Y = 187,521.32; thence North 1,071.15 feet to the most Southern corner of State Lease No. 3599, as amended, having Coordinates of X = 2,307,396.54 and Y = 188,592.47; thence North 00 degrees 29 minutes 42 seconds West 2,255.61 feet along said boundary of said State Lease No. 3599 to the Southwest corner of State Lease No. 21950 having Coordinates of X = 2,307,377.05 and Y = 190,848.00; thence along the boundary of said State Lease No. 21950 the following courses and distances: East 7,535.72 feet to a point having Coordinates of X = 2,314,912.77 and Y = 190,848.00, North 3,042.69 feet to a point having Coordinates of X = 2,314,912.77 and Y = 193,890.69 and West 146.47 feet to a point on the boundary of said State Lease No. 3258 having Coordinates of X = 2,314,766.30 and Y = 193,890.69; thence along the boundary of said State Lease No. 3258 the following courses and distances: North 31 degrees 57 minutes 25 seconds East 233.73 feet to a point having Coordinates of X = 2,314,890.01 and Y = 194,089.00, North 24 degrees 37 minutes 21 seconds East 264.00 feet to a point having Coordinates of X = 2,315,000.00 and Y = 194,328.99, North 20 degrees 22 minutes 35 seconds East 373.40 feet to a point having Coordinates of X = 2,315,130.02 and Y = 194,679.03, North 15 degrees 06 minutes 32 seconds East 580.77 feet to a point having Coordinates of X = 2,315,281.40 and Y = 195,239.72, North 54 degrees 21 minutes 40 seconds West 530.82 feet to a point having Coordinates of X = 2,314,850.00 and Y = 195,549.02 and North 08 degrees 36 minutes 56 seconds East 492.38 feet to the point of beginning, **LESS AND EXCEPT** any right, title, and interest in lands owned by and not under lease from the State of Louisiana, on behalf of the Lafourche Parish School Board, situated in Section 16, Township 22 South, Range 21 East, Lafourche Parish, Louisiana, contained within the above described tract, and **LESS AND EXCEPT** any Vacant State Lands that may lie within the above described tract, containing approximately **2,432 acres**, all as more particularly outlined on a plat on file in the Office of Mineral Resources, Department of Natural Resources. All bearings, distances and coordinates are based on Louisiana Coordinate System of 1927, (North or South Zone), where applicable.

NOTE: The above description of the Tract nominated for lease has been provided and corrected, where required, exclusively by the nomination party. Any mineral lease selected from this Tract and awarded by the Louisiana State Mineral and Energy Board shall be without warranty of any kind, either

express, implied, or statutory, including, but not limited to, the implied warranties of merchantability and fitness for a particular purpose. Should the mineral lease awarded by the Louisiana State Mineral and Energy Board be subsequently modified, cancelled or abrogated due to the existence of conflicting leases, operating agreements, private claims or other future obligations or conditions which may affect all or any portion of the leased Tract, it shall not relieve the Lessee of the obligation to pay any bonus due thereon to the Louisiana State Mineral and Energy Board, nor shall the Louisiana State Mineral and Energy Board be obligated to refund any consideration paid by the Lessor prior to such modification, cancellation, or abrogation, including, but not limited to, bonuses, rentals and royalties.

NOTE: The State of Louisiana does hereby reserve, and this lease shall be subject to, the imprescriptible right of surface use in the nature of a servitude in favor of the Department of Natural Resources, including its Offices and Commissions, for the sole purpose of implementing, constructing, servicing and maintaining approved coastal zone management and/or restoration projects. Utilization of any and all rights derived under this lease by the mineral lessee, its agents, successors or assigns, shall not interfere with nor hinder the reasonable surface use by the Department of Natural Resources, its Offices or Commissions, as herein above reserved.

Applicant: LOUISIANA BAYOU OIL & GAS CO.

Bidder	Cash Payment	Price/Acre	Rental	Oil	Gas	Other

Legend



21040012

Active_Leases

0 3,000 Feet



LAFOURCHE

TIMBALIER BAY

P.O.B.

SL 3258

SL 3258

SL 21950

SL 3599