

TRACT 45446 - Portion of Blocks 3, and 4, Vermilion Area, Revised, Vermilion Parish, Louisiana

The beds and bottoms of all water bodies belonging to the State of Louisiana located in Blocks 3, and 4, Vermilion Area, Revised, together with any present lands formed by accretion to the shoreline or islands formed therein, located in Vermilion Parish, Louisiana, owned by and not presently under mineral lease as of August 11, 2021, from the State of Louisiana, the geographical area of which is more fully described as follows: Beginning at a point within Block 3, Vermilion Area, Revised having Coordinates of X = 1,627,913.71 and Y = 324,167.88; thence East 12,089.44 feet within said Block 3 and into Block 4, Vermilion Area, Revised to a point having Coordinates of X = 1,640,003.15 and Y = 324,167.88; thence South 6,585.06 feet to a point being a point having Coordinates of X = 1,640,003.15 and Y = 317,582.82; thence West 12,089.44 feet to a point having Coordinates of X = 1,627,913.71 and Y = 317,582.82; thence North 6,585.06 feet to the point of beginning, containing approximately **1,827.59 acres**, all as more particularly outlined on a plat on file in the Office of Mineral Resources, Department of Natural Resources. All bearings, distances and coordinates are based on Louisiana Coordinate System of 1927, (North or South Zone).

NOTE: The above description of the Tract nominated for lease has been provided and corrected, where required, exclusively by the nomination party. Any mineral lease selected from this Tract and awarded by the Louisiana State Mineral and Energy Board shall be without warranty of any kind, either express, implied, or statutory, including, but not limited to, the implied warranties of merchantability and fitness for a particular purpose. Should the mineral lease awarded by the Louisiana State Mineral and Energy Board be subsequently modified, cancelled or abrogated due to the existence of conflicting leases, operating agreements, private claims or other future obligations or conditions which may affect all or any portion of the leased Tract, it shall not relieve the Lessee of the obligation to pay any bonus due thereon to the Louisiana State Mineral and Energy Board, nor shall the Louisiana State Mineral and Energy Board be obligated to refund any consideration paid by the Lessor prior to such modification, cancellation, or abrogation, including, but not limited to, bonuses, rentals and royalties.

NOTE: The State of Louisiana does hereby reserve, and this lease shall be subject to, the imprescriptible right of surface use in the nature of a servitude in favor of the Department of Natural Resources, including its Offices and Commissions, for the sole purpose of implementing, constructing, servicing and maintaining approved coastal zone management and/or restoration projects. Utilization of any and all rights derived under this lease by the mineral lessee, its agents, successors or assigns, shall not interfere with nor hinder the reasonable surface use by the Department of Natural Resources, its Offices or Commissions, as herein above reserved.

Applicant: CYPRESS ENERGY CORPORATION

Bidder	Cash Payment	Price/Acre	Rental	Oil	Gas	Other

Legend



0 2,000 Feet

VERMILION

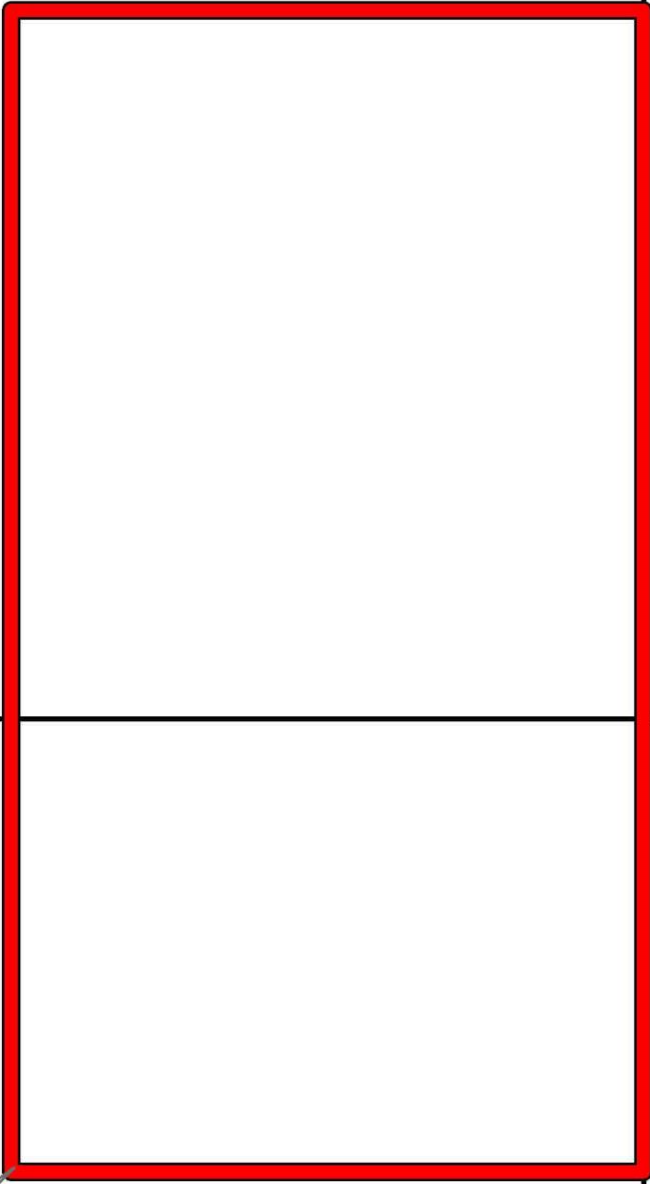
GULF OF MEXICO

VR0003

VR0004

VERMILION AREA, REVISED

P.O.B.



TRACT 45447 - Portion of Blocks 4, and 5, Vermilion Area, Revised, Vermilion Parish, Louisiana

The beds and bottoms of all water bodies belonging to the State of Louisiana located in Blocks 4, and 5, Vermilion Area, Revised, together with any present lands formed by accretion to the shoreline or islands formed therein, located in Vermilion Parish, Louisiana, owned by and not presently under mineral lease as of August 11, 2021, from the State of Louisiana, the geographical area of which is more fully described as follows: Beginning at a point within Block 3, Vermilion Area, Revised having Coordinates of X = 1,640,003.15 and Y = 324,167.88; thence East 11,896.85 feet within said Block 3 and into Block 4, Vermilion Area, Revised to a point having Coordinates of X = 1,651,900.00 and Y = 324,167.88; thence South 6,585.07 feet to a point being a point having Coordinates of X = 1,651,900.00 and Y = 317,582.82; thence West 11,896.85 feet to a point having Coordinates of X = 1,640,003.15 and Y = 317,582.82; thence North 6,585.06 feet to the point of beginning, containing approximately **1,798.47 acres**, all as more particularly outlined on a plat on file in the Office of Mineral Resources, Department of Natural Resources. All bearings, distances and coordinates are based on Louisiana Coordinate System of 1927, (North or South Zone).

NOTE: The above description of the Tract nominated for lease has been provided and corrected, where required, exclusively by the nomination party. Any mineral lease selected from this Tract and awarded by the Louisiana State Mineral and Energy Board shall be without warranty of any kind, either express, implied, or statutory, including, but not limited to, the implied warranties of merchantability and fitness for a particular purpose. Should the mineral lease awarded by the Louisiana State Mineral and Energy Board be subsequently modified, cancelled or abrogated due to the existence of conflicting leases, operating agreements, private claims or other future obligations or conditions which may affect all or any portion of the leased Tract, it shall not relieve the Lessee of the obligation to pay any bonus due thereon to the Louisiana State Mineral and Energy Board, nor shall the Louisiana State Mineral and Energy Board be obligated to refund any consideration paid by the Lessor prior to such modification, cancellation, or abrogation, including, but not limited to, bonuses, rentals and royalties.

NOTE: The State of Louisiana does hereby reserve, and this lease shall be subject to, the imprescriptible right of surface use in the nature of a servitude in favor of the Department of Natural Resources, including its Offices and Commissions, for the sole purpose of implementing, constructing, servicing and maintaining approved coastal zone management and/or restoration projects. Utilization of any and all rights derived under this lease by the mineral lessee, its agents, successors or assigns, shall not interfere with nor hinder the reasonable surface use by the Department of Natural Resources, its Offices or Commissions, as herein above reserved.

Applicant: CYPRESS ENERGY CORPORATION

Bidder	Cash Payment	Price/Acre	Rental	Oil	Gas	Other

Legend



Office of Mineral Resources, Acres: 1798.47 Tract Number: 45447

VERMILION

P.O.B.

VR0004

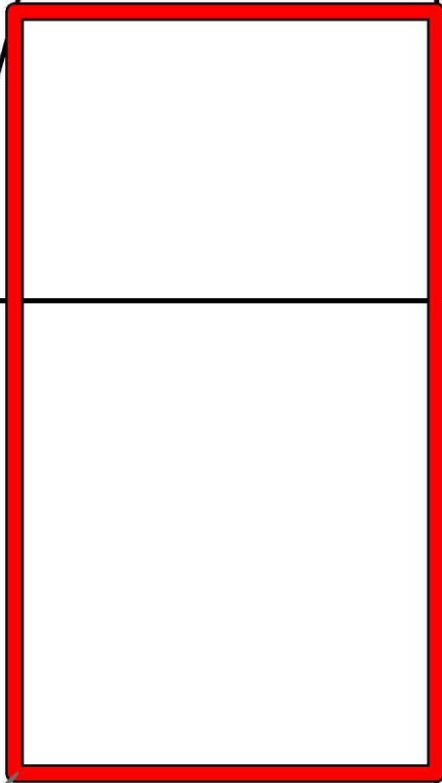
VR0005

GULF OF MEXICO

VR0017

VR0016

VERMILION AREA, REVISED



TRACT 45448 - Portion of Blocks 5, and 6, Vermilion Area, Revised, Vermilion Parish, Louisiana

The beds and bottoms of all water bodies belonging to the State of Louisiana located in Blocks 5, and 6, Vermilion Area, Revised, together with any present lands formed by accretion to the shoreline or islands formed therein, located in Vermilion Parish, Louisiana, owned by and not presently under mineral lease as of August 11, 2021, from the State of Louisiana, the geographical area of which is more fully described as follows: Beginning at a point on the North boundary of Block 05, Vermilion Area, Revised, said point also being a point on the Louisiana Coastline, as decreed by the Supreme Court of the United States, as determined by a Special Master appointed therein, in litigation styled *United States v. State of Louisiana et al No. 9 Original*, in 1975, having Coordinates of X = 1,651,900.00 and Y = 324,167.88; thence along said Coastline the following courses: Southeasterly along a straight line to a point having Coordinates of X = 1,653,430 and Y = 323,751, Southeasterly along a straight line to a point having Coordinates of X = 1,655,896 and Y = 323,305, Northeasterly along a straight line to a point having Coordinates of X = 1,657,050 and Y = 323,540, Southeasterly along a straight line to a point having Coordinates of X = 1,658,887 and Y = 323,134, Northeasterly along a straight line to a point having Coordinates of X = 1,659,960 and Y = 323,169, Southeasterly along a straight line to a point having Coordinates of X = 1,663,290 and Y = 322,457 and Southeasterly along a straight line to a point having Coordinates of X = 1,664,980.13 and Y = 322,097.44; thence South 4,514.64 feet to a point having Coordinates of X = 1,664,980.13 and Y = 317,582.80; thence West 13,080.13 feet to a point having Coordinates of X = 1,651,900.00 and Y = 317,582.80; thence North 6,585.08 feet to the point of beginning, containing approximately **1,677.06 acres**, all as more particularly outlined on a plat on file in the Office of Mineral Resources, Department of Natural Resources. All bearings, distances and coordinates are based on Louisiana Coordinate System of 1927, (North or South Zone).

NOTE: The above description of the Tract nominated for lease has been provided and corrected, where required, exclusively by the nomination party. Any mineral lease selected from this Tract and awarded by the Louisiana State Mineral and Energy Board shall be without warranty of any kind, either express, implied, or statutory, including, but not limited to, the implied warranties of merchantability and fitness for a particular purpose. Should the mineral lease awarded by the Louisiana State Mineral and Energy Board be subsequently modified, cancelled or abrogated due to the existence of conflicting leases, operating agreements, private claims or other future obligations or conditions which may affect all or any portion of the leased Tract, it shall not relieve the Lessee of the obligation to pay any bonus due thereon to the Louisiana State Mineral and Energy Board, nor shall the Louisiana State Mineral and Energy Board be obligated to refund any consideration paid by the Lessor prior to such modification, cancellation, or abrogation, including, but not limited to, bonuses, rentals and royalties.

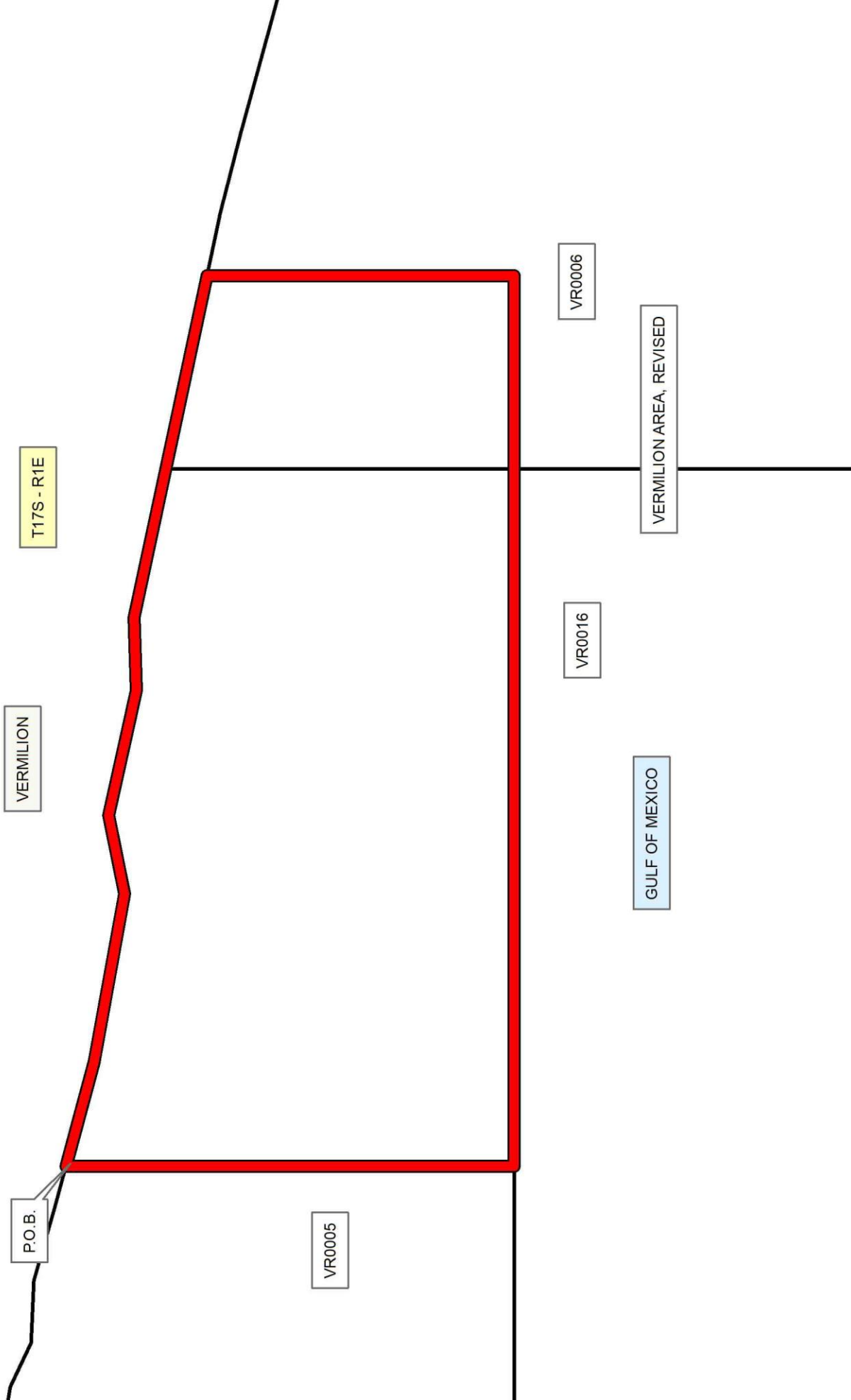
NOTE: The State of Louisiana does hereby reserve, and this lease shall be subject to, the imprescriptible right of surface use in the nature of a servitude in favor of the Department of Natural Resources, including its Offices and Commissions, for the sole purpose of implementing, constructing, servicing and maintaining approved coastal zone management and/or restoration projects. Utilization of any and all rights derived under this lease by the mineral lessee, its agents, successors or assigns, shall not interfere with nor hinder the reasonable surface use by the Department of Natural Resources, its Offices or Commissions, as herein above reserved.

Applicant: CYPRESS ENERGY CORPORATION

Bidder	Cash Payment	Price/Acre	Rental	Oil	Gas	Other

Legend

- 21080013
- Blocks



Office of Mineral Resources, Acres: 1677.06 Tract Number: 45448

TRACT 45449 - Portion of Block 6, Vermilion Area, Revised, Vermilion Parish, Louisiana

The beds and bottoms of all water bodies belonging to the State of Louisiana located in Block 6, Vermilion Area, Revised, together with any present lands formed by accretion to the shoreline or islands formed therein, located in Vermilion Parish, Louisiana, owned by and not presently under mineral lease as of August 11, 2021, from the State of Louisiana, the geographical area of which is more fully described as follows: Beginning at a point on the North boundary of Block 06, Vermilion Area, Revised, said point also being a point on the Louisiana Coastline, as decreed by the Supreme Court of the United States, as determined by a Special Master appointed therein, in litigation styled *United States v. State of Louisiana et al No. 9 Original*, in 1975, having Coordinates of X = 1,664,980.13 and Y = 322,097.44; thence along said Coastline the following courses: Southeasterly along a straight line to a point having Coordinates of X = 1,665,833 and Y = 321,916, Southeasterly along a straight line to a point having Coordinates of X = 1,667,091 and Y = 321,595, Southeasterly along a straight line to a point having Coordinates of X = 1,669,012 and Y = 321,069, Southeasterly along a straight line to a point having Coordinates of X = 1,671,018 and Y = 320,396 and Southeasterly along a straight line to a point having Coordinates of X = 1,672,889.60 and Y = 319,877.07; thence South 8,852.30 feet to a point having Coordinates of X = 1,672,889.60 and Y = 311,024.77; thence West 7,909.48 feet to a point having Coordinates of X = 1,664,980.13 and Y = 311,024.77; thence North 11,072.66 feet to the point of beginning, containing approximately **1,818.02 acres**, all as more particularly outlined on a plat on file in the Office of Mineral Resources, Department of Natural Resources. All bearings, distances and coordinates are based on Louisiana Coordinate System of 1927, (North or South Zone).

NOTE: The above description of the Tract nominated for lease has been provided and corrected, where required, exclusively by the nomination party. Any mineral lease selected from this Tract and awarded by the Louisiana State Mineral and Energy Board shall be without warranty of any kind, either express, implied, or statutory, including, but not limited to, the implied warranties of merchantability and fitness for a particular purpose. Should the mineral lease awarded by the Louisiana State Mineral and Energy Board be subsequently modified, cancelled or abrogated due to the existence of conflicting leases, operating agreements, private claims or other future obligations or conditions which may affect all or any portion of the leased Tract, it shall not relieve the Lessee of the obligation to pay any bonus due thereon to the Louisiana State Mineral and Energy Board, nor shall the Louisiana State Mineral and Energy Board be obligated to refund any consideration paid by the Lessor prior to such modification, cancellation, or abrogation, including, but not limited to, bonuses, rentals and royalties.

NOTE: The State of Louisiana does hereby reserve, and this lease shall be subject to, the imprescriptible right of surface use in the nature of a servitude in favor of the Department of Natural Resources, including its Offices and Commissions, for the sole purpose of implementing, constructing,

servicing and maintaining approved coastal zone management and/or restoration projects. Utilization of any and all rights derived under this lease by the mineral lessee, its agents, successors or assigns, shall not interfere with nor hinder the reasonable surface use by the Department of Natural Resources, its Offices or Commissions, as herein above reserved.

Applicant: CYPRESS ENERGY CORPORATION

Bidder	Cash Payment	Price/Acre	Rental	Oil	Gas	Other

Legend

21080014



Blocks



0 2,000 Feet

P.O.B.

VERMILION

T17S - R1E

VR0006

VERMILION AREA, REVISED

GULF OF MEXICO

VR0015

Office of Mineral Resources, Acres: 1818.02 Tract Number: 45449

TRACT 45450 - Portion of Blocks 17, and 18, Vermilion Area, Revised, Vermilion Parish, Louisiana

The beds and bottoms of all water bodies belonging to the State of Louisiana located in Blocks 17, and 18, Vermilion Area, Revised, together with any present lands formed by accretion to the shoreline or islands formed therein, located in Vermilion Parish, Louisiana, owned by and not presently under mineral lease as of August 11, 2021, from the State of Louisiana, the geographical area of which is more fully described as follows: Beginning at a point on the North boundary of Block 18, Vermilion Area, Revised having Coordinates of X = 1,627,913.71 and Y = 317,582.82; thence East 8,814.29 feet along the North boundary of said Block 18 and into Block 17, Vermilion Area, Revised to a point having Coordinates of X = 1,636,728.00 and Y = 317,582.82; thence South 9,051.00 feet to a point being a point on the South boundary of said Block 17, said point also a point on the Three Mile Line, as decreed by the Supreme Court of the United States, as determined by a Special Master appointed therein, in litigation styled *United States v. State of Louisiana et al No. 9 Original*, in 1975, having Coordinates of X = 1,636,728.00 and Y = 308,531.83; thence along said Three Mile Line the following courses: Northwesterly along a straight line to a point having Coordinates of X = 1,636,292 and Y = 308,607 and Northwesterly along a straight line to a point having Coordinates of X = 1,627,913.71 and Y = 309,704.35; thence North 7,898.47 feet to the point of beginning, containing approximately **1,711.09 acres, LESS AND EXCEPT** that portion thereof, if any, lying seaward of the line three nautical miles from the coast line of Louisiana, as said three mile line has been decreed by the Supreme Court of the United States, as determined by a Special Master appointed therein, in litigation styled **United States v. State of Louisiana et al No. 9 Original**, in 1975, all as more particularly outlined on a plat in the Office of Mineral Resources, Department of Natural Resources. All bearings, distances and coordinates are based on the Louisiana Coordinate System of 1927, (South Zone).

NOTE: The above description of the Tract nominated for lease has been provided and corrected, where required, exclusively by the nomination party. Any mineral lease selected from this Tract and awarded by the Louisiana State Mineral and Energy Board shall be without warranty of any kind, either express, implied, or statutory, including, but not limited to, the implied warranties of merchantability and fitness for a particular purpose. Should the mineral lease awarded by the Louisiana State Mineral and Energy Board be subsequently modified, cancelled or abrogated due to the existence of conflicting leases, operating agreements, private claims or other future obligations or conditions which may affect all or any portion of the leased Tract, it shall not relieve the Lessee of the obligation to pay any bonus due thereon to the Louisiana State Mineral and Energy Board, nor shall the Louisiana State Mineral and Energy Board be obligated to refund any consideration paid by the Lessor prior to such modification, cancellation, or abrogation, including, but not limited to, bonuses, rentals and royalties.

NOTE: The State of Louisiana does hereby reserve, and this lease shall be subject to, the imprescriptible right of surface use in the nature of a servitude in favor of the Department of Natural Resources, including its Offices and Commissions, for the sole purpose of implementing, constructing, servicing and maintaining approved coastal zone management and/or restoration projects. Utilization of any and all rights derived under this lease by the mineral lessee, its agents, successors or assigns, shall not interfere with nor hinder the reasonable surface use by the Department of Natural Resources, its Offices or Commissions, as herein above reserved.

Applicant: CYPRESS ENERGY CORPORATION

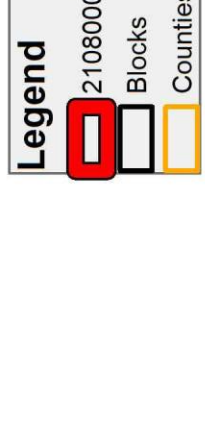
Bidder	Cash Payment	Price/Acre	Rental	Oil	Gas	Other

Legend

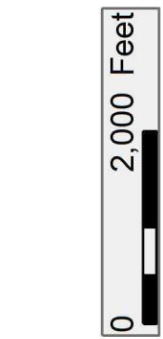
21080008

Blocks

Counties



VERMILION



VR0003

P.O.B.

VR0018

VR0004

GULF OF MEXICO

VR0017

VERMILION AREA, REVISED

TRACT 45451 - Portion of Block 17, Vermilion Area, Revised, Vermilion Parish, Louisiana

The beds and bottoms of all water bodies belonging to the State of Louisiana located in Block 17, Vermilion Area, Revised, together with any present lands formed by accretion to the shoreline or islands formed therein, located in Vermilion Parish, Louisiana, owned by and not presently under mineral lease as of August 11, 2021, from the State of Louisiana, the geographical area of which is more fully described as follows: Beginning at a point on the North boundary of Block 17, Vermilion Area, Revised having Coordinates of X = 1,636,728.00 and Y = 317,582.82; thence East 7,939.77 feet along the North boundary of said Block 17 to its Northeast corner having Coordinates of X = 1,644,667.77 and Y = 317,582.82; thence South 10,539.22 feet to a point on the Three Mile Line, as decreed by the Supreme Court of the United States, as determined by a Special Master appointed therein, in litigation styled *United States v. State of Louisiana et al No. 9 Original*, in 1975, having Coordinates of X = 1,644,667.77 and Y = 307,043.60; thence along said Three Mile Line the following courses: Northwesterly along an arc having a radius of 18,240.60 feet and a center located at X = 1,649,308 and Y = 324,684 to a point having Coordinates of X = 1,643,681 and Y = 307,333 and Northwesterly along a straight line to a point having Coordinates of X = 1,636,728.00 and Y = 308,531.83; thence North 9,051.00 feet to the point of beginning, containing approximately **1,775.97 acres, LESS AND EXCEPT** that portion thereof, if any, lying seaward of the line three nautical miles from the coast line of Louisiana, as said three mile line has been decreed by the Supreme Court of the United States, as determined by a Special Master appointed therein, in litigation styled **United States v. State of Louisiana et al No. 9 Original**, in 1975, all as more particularly outlined on a plat in the Office of Mineral Resources, Department of Natural Resources. All bearings, distances and coordinates are based on the Louisiana Coordinate System of 1927, (South Zone).

NOTE: The above description of the Tract nominated for lease has been provided and corrected, where required, exclusively by the nomination party. Any mineral lease selected from this Tract and awarded by the Louisiana State Mineral and Energy Board shall be without warranty of any kind, either express, implied, or statutory, including, but not limited to, the implied warranties of merchantability and fitness for a particular purpose. Should the mineral lease awarded by the Louisiana State Mineral and Energy Board be subsequently modified, cancelled or abrogated due to the existence of conflicting leases, operating agreements, private claims or other future obligations or conditions which may affect all or any portion of the leased Tract, it shall not relieve the Lessee of the obligation to pay any bonus due thereon to the Louisiana State Mineral and Energy Board, nor shall the Louisiana State Mineral and Energy Board be obligated to refund any consideration paid by the Lessor prior to such modification, cancellation, or abrogation, including, but not limited to, bonuses, rentals and royalties.

NOTE: The State of Louisiana does hereby reserve, and this lease shall be subject to, the imprescriptible right of surface use in the nature of a

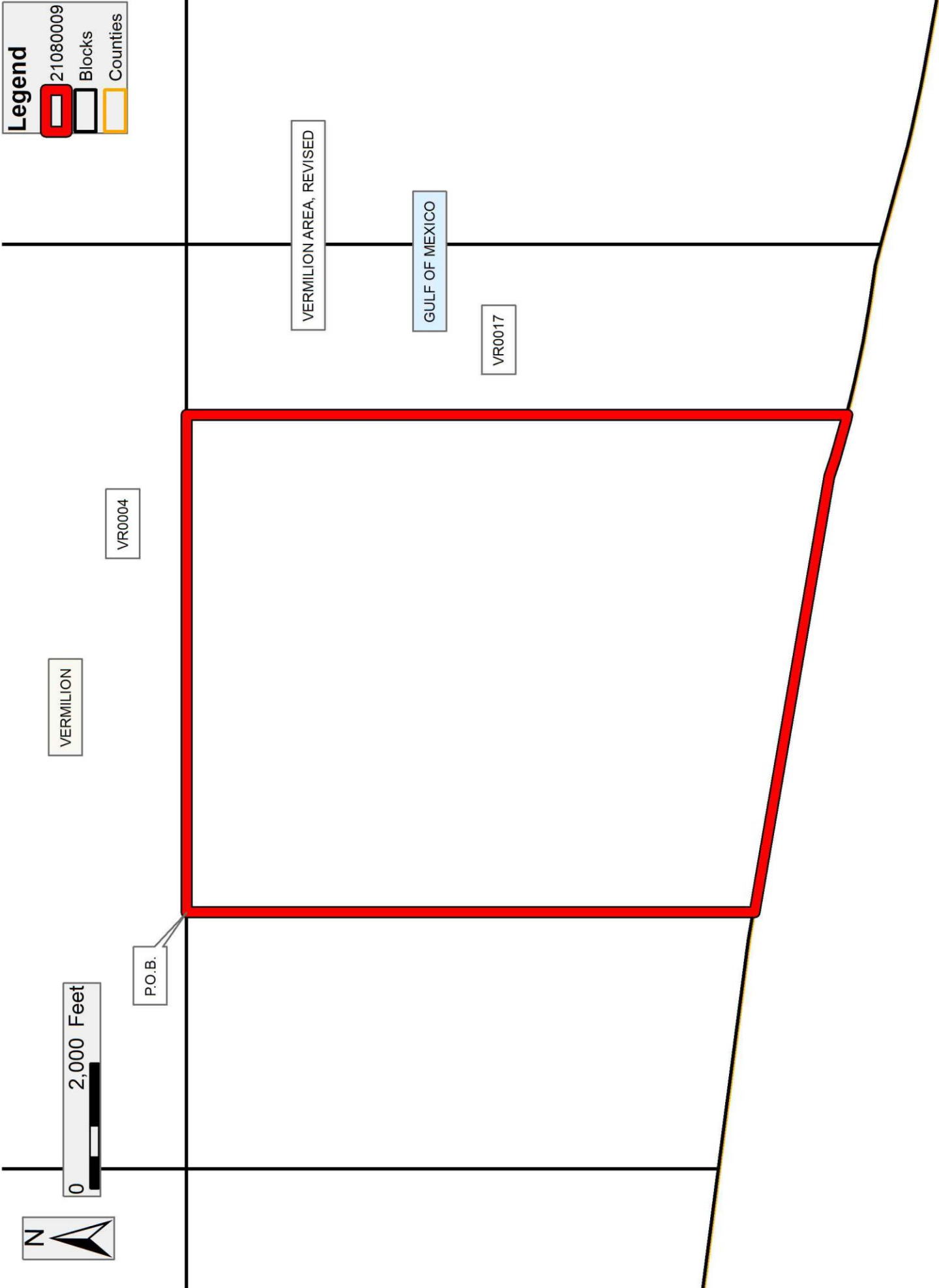
servitude in favor of the Department of Natural Resources, including its Offices and Commissions, for the sole purpose of implementing, constructing, servicing and maintaining approved coastal zone management and/or restoration projects. Utilization of any and all rights derived under this lease by the mineral lessee, its agents, successors or assigns, shall not interfere with nor hinder the reasonable surface use by the Department of Natural Resources, its Offices or Commissions, as herein above reserved.

Applicant: CYPRESS ENERGY CORPORATION

Bidder	Cash Payment	Price/Acre	Rental	Oil	Gas	Other

Legend

- 21080009
- Blocks
- Counties



Office of Mineral Resources, Acres: 1775.97 Tract Number: 45451

TRACT 45452 - Portion of Blocks 16, and 17, Vermilion Area, Revised, Vermilion Parish, Louisiana

The beds and bottoms of all water bodies belonging to the State of Louisiana located in Blocks 16, and 17, Vermilion Area, Revised, together with any present lands formed by accretion to the shoreline or islands formed therein, located in Vermilion Parish, Louisiana, owned by and not presently under mineral lease as of August 11, 2021, from the State of Louisiana, the geographical area of which is more fully described as follows: Beginning at a point on the North boundary of Block 17, Vermilion Area, Revised having Coordinates of X = 1,644,667.77 and Y = 317,582.82; thence East 7,232.23 feet along the North boundary of said Block 17 and into Block 16, Vermilion Area, Revised to a point having Coordinates of X = 1,651,900.00 and Y = 317,582.80; thence South 12,091.16 feet to a point on the Three Mile Line, as decreed by the Supreme Court of the United States, as determined by a Special Master appointed therein, in litigation styled *United States v. State of Louisiana et al No. 9 Original*, in 1975, having Coordinates of X = 1,651,900.00 and Y = 305,491.64; thence along said Three Mile Line the following courses: Northwesterly along a straight line to a point having Coordinates of X = 1,650,184 and Y = 305,802, Northwesterly along an arc having a radius of 18,240.60 feet and a center located at X = 1,653,430 and Y = 323,751 to a point having Coordinates of X = 1,648,635 and Y = 306,152, Northwesterly along a straight line to a point having Coordinates of X = 1,647,382.17 and Y = 306,493.68, Northwesterly along a straight line to a point having Coordinates of X = 1,647,051 and Y = 306,584 and Northwesterly along an arc having a radius of 18,240.60 feet and a center located at X = 1,649,308 and Y = 324,684 to a point on the West boundary of said Block 17 having Coordinates of X = 1,644,667.77 and Y = 307,043.60; thence North 10,539.22 feet to the point of beginning, containing approximately **1,881.83 acres, LESS AND EXCEPT** that portion thereof, if any, lying seaward of the line three nautical miles from the coast line of Louisiana, as said three mile line has been decreed by the Supreme Court of the United States, as determined by a Special Master appointed therein, in litigation styled **United States v. State of Louisiana et al No. 9 Original**, in 1975, all as more particularly outlined on a plat in the Office of Mineral Resources, Department of Natural Resources. All bearings, distances and coordinates are based on the Louisiana Coordinate System of 1927, (South Zone).

NOTE: The above description of the Tract nominated for lease has been provided and corrected, where required, exclusively by the nomination party. Any mineral lease selected from this Tract and awarded by the Louisiana State Mineral and Energy Board shall be without warranty of any kind, either express, implied, or statutory, including, but not limited to, the implied warranties of merchantability and fitness for a particular purpose. Should the mineral lease awarded by the Louisiana State Mineral and Energy Board be subsequently modified, cancelled or abrogated due to the existence of conflicting leases, operating agreements, private claims or other future obligations or conditions which may affect all or any portion of the leased Tract, it shall not relieve the Lessee of the obligation to pay any bonus due thereon to the Louisiana State Mineral and Energy Board, nor shall the

Louisiana State Mineral and Energy Board be obligated to refund any consideration paid by the Lessor prior to such modification, cancellation, or abrogation, including, but not limited to, bonuses, rentals and royalties.

NOTE: The State of Louisiana does hereby reserve, and this lease shall be subject to, the imprescriptible right of surface use in the nature of a servitude in favor of the Department of Natural Resources, including its Offices and Commissions, for the sole purpose of implementing, constructing, servicing and maintaining approved coastal zone management and/or restoration projects. Utilization of any and all rights derived under this lease by the mineral lessee, its agents, successors or assigns, shall not interfere with nor hinder the reasonable surface use by the Department of Natural Resources, its Offices or Commissions, as herein above reserved.

Applicant: CYPRESS ENERGY CORPORATION

Bidder	Cash Payment	Price/Acre	Rental	Oil	Gas	Other

Legend

- 21080010
- Blocks
- Counties



0 2,000 Feet

VR0004

P.O.B.

VERMILION

VR0005

VERMILION AREA, REVISED

GULF OF MEXICO

VR0016

VR0017

Office of Mineral Resources, Acres: 1881.83 Tract Number: 45452

TRACT 45453 - Portion of Block 16, Vermilion Area, Revised, Vermilion Parish, Louisiana

The beds and bottoms of all water bodies belonging to the State of Louisiana located in Block 16, Vermilion Area, Revised, together with any present lands formed by accretion to the shoreline or islands formed therein, located in Vermilion Parish, Louisiana, owned by and not presently under mineral lease as of August 11, 2021, from the State of Louisiana, the geographical area of which is more fully described as follows: Beginning at a point on the North boundary of Block 16, Vermilion Area, Revised having Coordinates of X = 1,651,900.00 and Y = 315,549.80; thence East 6,192.28 feet along the North boundary of said Block 16 to a point having Coordinates of X = 1,658,092.28 and Y = 317,582.80; thence South 12,671.62 feet to a point on the Three Mile Line, as decreed by the Supreme Court of the United States, as determined by a Special Master appointed therein, in litigation styled *United States v. State of Louisiana et al No. 9 Original*, in 1975, having Coordinates of X = 1,658,092.28 and Y = 304,911.18; thence along said Three Mile Line the following courses: Northwesterly along an arc having a radius of 18,240.60 feet and a center located at X = 1,658,887 and Y = 323,134 to a point having Coordinates of X = 1,656,354 and Y = 305,070, Northwesterly along an arc having a radius of 18,240.60 feet and a center located at X = 1,655,896 and Y = 323,305 to a point having Coordinates of X = 1,652,650 and Y = 305,356 and Northwesterly along a straight line to a point having Coordinates of X = 1,651,900.00 and Y = 305,491.64; thence North 12,091.16 feet to the point of beginning, containing approximately **1,769.63 acres, LESS AND EXCEPT** that portion thereof, if any, lying seaward of the line three nautical miles from the coast line of Louisiana, as said three mile line has been decreed by the Supreme Court of the United States, as determined by a Special Master appointed therein, in litigation styled **United States v. State of Louisiana et al No. 9 Original**, in 1975, all as more particularly outlined on a plat in the Office of Mineral Resources, Department of Natural Resources. All bearings, distances and coordinates are based on the Louisiana Coordinate System of 1927, (South Zone).

NOTE: The above description of the Tract nominated for lease has been provided and corrected, where required, exclusively by the nomination party. Any mineral lease selected from this Tract and awarded by the Louisiana State Mineral and Energy Board shall be without warranty of any kind, either express, implied, or statutory, including, but not limited to, the implied warranties of merchantability and fitness for a particular purpose. Should the mineral lease awarded by the Louisiana State Mineral and Energy Board be subsequently modified, cancelled or abrogated due to the existence of conflicting leases, operating agreements, private claims or other future obligations or conditions which may affect all or any portion of the leased Tract, it shall not relieve the Lessee of the obligation to pay any bonus due thereon to the Louisiana State Mineral and Energy Board, nor shall the Louisiana State Mineral and Energy Board be obligated to refund any consideration paid by the Lessor prior to such modification, cancellation, or abrogation, including, but not limited to, bonuses, rentals and royalties.

NOTE: The State of Louisiana does hereby reserve, and this lease shall be subject to, the imprescriptible right of surface use in the nature of a servitude in favor of the Department of Natural Resources, including its Offices and Commissions, for the sole purpose of implementing, constructing, servicing and maintaining approved coastal zone management and/or restoration projects. Utilization of any and all rights derived under this lease by the mineral lessee, its agents, successors or assigns, shall not interfere with nor hinder the reasonable surface use by the Department of Natural Resources, its Offices or Commissions, as herein above reserved.

Applicant: CYPRESS ENERGY CORPORATION

Bidder	Cash Payment	Price/Acre	Rental	Oil	Gas	Other

Legend

- 21080011
- Blocks
- Counties

VERMILION

VR0005

VR0016

GULF OF MEXICO

VERMILION AREA, REVISED

P.O.B.



Office of Mineral Resources, Acres: 1769.63 Tract Number: 45453

TRACT 45454 - Portion of Blocks 15, 16, and 6, Vermilion Area, Revised, Vermilion Parish, Louisiana

The beds and bottoms of all water bodies belonging to the State of Louisiana located in Blocks 15, 16, and 6, Vermilion Area, Revised, together with any present lands formed by accretion to the shoreline or islands formed therein, located in Vermilion Parish, Louisiana, owned by and not presently under mineral lease as of August 11, 2021, from the State of Louisiana, the geographical area of which is more fully described as follows: Beginning at a point on the North boundary of Block 16, Vermilion Area, Revised having Coordinates of X = 1,658,092.28 and Y = 317,582.80; thence East 6,887.84 feet along the North boundary of said Block 16 and into Block 6 Vermilion area, Revised to a point having Coordinates of X = 1,664,980.13 and Y = 317,582.80; thence South 14,400.71 feet to a point on the Three Mile Line, as decreed by the Supreme Court of the United States, as determined by a Special Master appointed therein, in litigation styled *United States v. State of Louisiana et al No. 9 Original*, in 1975, having Coordinates of X = 1,664,980.13 and Y = 303,182.10; thence along said Three Mile Line the following courses: Northwesterly along a straight line to a point having Coordinates of X = 1,663,698 and Y = 303,612, Northwesterly along a straight line to a point having Coordinates of X = 1,662,427 and Y = 303,960, Northwesterly along a straight line to a point having Coordinates of X = 1,661,678 and Y = 304,151, Northwesterly along a straight line to a point having Coordinates of X = 1,659,494 and Y = 304,616, Northwesterly along an arc having a radius of 18,240.60 feet and a center located at X = 1,663,290 and Y = 322,457 to a point having Coordinates of X = 1,659,476 and Y = 304,620, Northwesterly along a straight line to a point having Coordinates of X = 1,658,120 and Y = 304,910 and Northwesterly along an arc having a radius of 18,240.60 feet and a center located at X = 1,658,887 and Y = 323,134 to a point having Coordinates of X = 1,658,092.28 and Y = 304,911.18; thence North 12,671.62 feet to the point of beginning, containing approximately **2,126.91 acres, LESS AND EXCEPT** that portion thereof, if any, lying seaward of the line three nautical miles from the coast line of Louisiana, as said three mile line has been decreed by the Supreme Court of the United States, as determined by a Special Master appointed therein, in litigation styled **United States v. State of Louisiana et al No. 9 Original**, in 1975, all as more particularly outlined on a plat in the Office of Mineral Resources, Department of Natural Resources. All bearings, distances and coordinates are based on the Louisiana Coordinate System of 1927, (South Zone).

NOTE: The above description of the Tract nominated for lease has been provided and corrected, where required, exclusively by the nomination party. Any mineral lease selected from this Tract and awarded by the Louisiana State Mineral and Energy Board shall be without warranty of any kind, either express, implied, or statutory, including, but not limited to, the implied warranties of merchantability and fitness for a particular purpose. Should the mineral lease awarded by the Louisiana State Mineral and Energy Board be subsequently modified, cancelled or abrogated due to the existence of conflicting leases, operating agreements, private claims or other future

obligations or conditions which may affect all or any portion of the leased Tract, it shall not relieve the Lessee of the obligation to pay any bonus due thereon to the Louisiana State Mineral and Energy Board, nor shall the Louisiana State Mineral and Energy Board be obligated to refund any consideration paid by the Lessor prior to such modification, cancellation, or abrogation, including, but not limited to, bonuses, rentals and royalties.

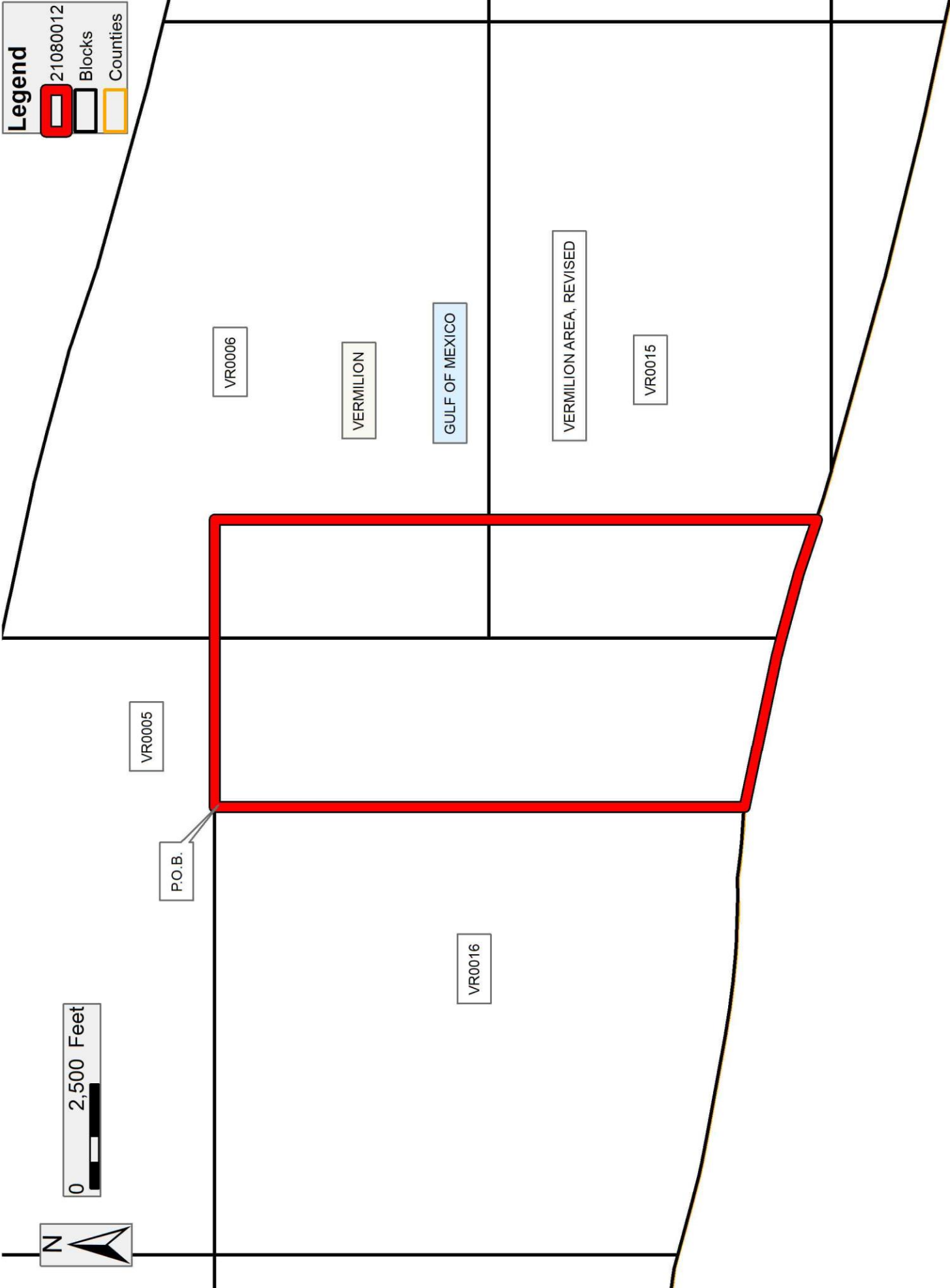
NOTE: The State of Louisiana does hereby reserve, and this lease shall be subject to, the imprescriptible right of surface use in the nature of a servitude in favor of the Department of Natural Resources, including its Offices and Commissions, for the sole purpose of implementing, constructing, servicing and maintaining approved coastal zone management and/or restoration projects. Utilization of any and all rights derived under this lease by the mineral lessee, its agents, successors or assigns, shall not interfere with nor hinder the reasonable surface use by the Department of Natural Resources, its Offices or Commissions, as herein above reserved.

Applicant: CYPRESS ENERGY CORPORATION

Bidder	Cash Payment	Price/Acre	Rental	Oil	Gas	Other

Legend

- 21080012
- Blocks
- Counties



Office of Mineral Resources, Acres: 2126.91 Tract Number: 45454

TRACT 45455 - Portion of Block 15, Vermilion Area, Revised, Vermilion Parish, Louisiana

The beds and bottoms of all water bodies belonging to the State of Louisiana located in Block 15, Vermilion Area, Revised, together with any present lands formed by accretion to the shoreline or islands formed therein, located in Vermilion Parish, Louisiana, owned by and not presently under mineral lease as of August 11, 2021, from the State of Louisiana, the geographical area of which is more fully described as follows: Beginning at a point on the North boundary of Block 15, Vermilion Area, Revised having Coordinates of X = 1,664,980.13 and Y = 311,024.77; thence East 7,909.48 feet along the North boundary of said Block 15 to a point having Coordinates of X = 1,672,889.60 and Y = 311,024.77; thence South 8,200.02 feet to a point having Coordinates of X = 1,672,889.60 and Y = 302,824.75; thence West 6,766.29 feet to a point on the Three Mile Line, as decreed by the Supreme Court of the United States, as determined by a Special Master appointed therein, in litigation styled *United States v. State of Louisiana et al No. 9 Original*, in 1975, having Coordinates of X = 1,666,123.31 and Y = 302,824.75; thence along said Three Mile Line the following courses: Northwesterly along an arc having a radius of 18,240.60 feet and a center located at X = 1,671,018 and Y = 320,396 to a point having Coordinates of X = 1,665,216 and Y = 303,103 and Northwesterly along a straight line to a point having Coordinates of X = 1,664,980.13 and Y = 303,182.09; thence North 7,842.68 feet to the point of beginning, containing approximately **1,484.40 acres, LESS AND EXCEPT** that portion thereof, if any, lying seaward of the line three nautical miles from the coast line of Louisiana, as said three mile line has been decreed by the Supreme Court of the United States, as determined by a Special Master appointed therein, in litigation styled **United States v. State of Louisiana et al No. 9 Original**, in 1975, all as more particularly outlined on a plat in the Office of Mineral Resources, Department of Natural Resources. All bearings, distances and coordinates are based on the Louisiana Coordinate System of 1927, (South Zone).

NOTE: The above description of the Tract nominated for lease has been provided and corrected, where required, exclusively by the nomination party. Any mineral lease selected from this Tract and awarded by the Louisiana State Mineral and Energy Board shall be without warranty of any kind, either express, implied, or statutory, including, but not limited to, the implied warranties of merchantability and fitness for a particular purpose. Should the mineral lease awarded by the Louisiana State Mineral and Energy Board be subsequently modified, cancelled or abrogated due to the existence of conflicting leases, operating agreements, private claims or other future obligations or conditions which may affect all or any portion of the leased Tract, it shall not relieve the Lessee of the obligation to pay any bonus due thereon to the Louisiana State Mineral and Energy Board, nor shall the Louisiana State Mineral and Energy Board be obligated to refund any consideration paid by the Lessor prior to such modification, cancellation, or abrogation, including, but not limited to, bonuses, rentals and royalties.

NOTE: The State of Louisiana does hereby reserve, and this lease shall be subject to, the imprescriptible right of surface use in the nature of a servitude in favor of the Department of Natural Resources, including its Offices and Commissions, for the sole purpose of implementing, constructing, servicing and maintaining approved coastal zone management and/or restoration projects. Utilization of any and all rights derived under this lease by the mineral lessee, its agents, successors or assigns, shall not interfere with nor hinder the reasonable surface use by the Department of Natural Resources, its Offices or Commissions, as herein above reserved.

Applicant: CYPRESS ENERGY CORPORATION

Bidder	Cash Payment	Price/Acre	Rental	Oil	Gas	Other

Legend

- 21080015
- Blocks
- Counties

