

TRACT 45460 - Caddo Parish, Louisiana

All of the lands now or formerly constituting the beds and bottoms of all water bodies of every nature and description as to which title is vested in the State of Louisiana, together with all islands arising therein and other lands formed by accretion or by reliction, where allowed by law, excepting tax adjudicated lands, and not presently under mineral lease on September 8, 2021, situated in Caddo Parish, Louisiana, and more particularly described as follows: Beginning at a point having Coordinates of X = 1,602,041.93 and Y = 674,416.70; thence North 5,364.06 feet to a point having Coordinates of X = 1,602,041.93 and Y = 679,780.76; thence North 12,000.06 feet to a point having Coordinates of X = 1,602,041.93 and Y = 691,780.82; thence East 7,195.97 to a point having Coordinates of X = 1,609,237.89 and Y = 691,780.82; thence South 17,364.13 feet to a point having Coordinates of X = 1,609,237.89 and Y = 674,416.70; thence West 7,195.97 feet to the point of beginning, containing approximately **3 acres**, all as more particularly outlined on a plat on file in the Office of Mineral Resources, Department of Natural Resources. All bearings, distances and coordinates are based on Louisiana Coordinate System of 1927, (North or South Zone), where applicable.

NOTE: The above description of the Tract nominated for lease has been provided and corrected, where required, exclusively by the nomination party. Any mineral lease selected from this Tract and awarded by the Louisiana State Mineral and Energy Board shall be without warranty of any kind, either express, implied, or statutory, including, but not limited to, the implied warranties of merchantability and fitness for a particular purpose. Should the mineral lease awarded by the Louisiana State Mineral and Energy Board be subsequently modified, cancelled or abrogated due to the existence of conflicting leases, operating agreements, private claims or other future obligations or conditions which may affect all or any portion of the leased Tract, it shall not relieve the Lessee of the obligation to pay any bonus due thereon to the Louisiana State Mineral and Energy Board, nor shall the Louisiana State Mineral and Energy Board be obligated to refund any consideration paid by the Lessor prior to such modification, cancellation, or abrogation, including, but not limited to, bonuses, rentals and royalties.

Applicant: BORDER EXPLORATION, L.L.C.

Bidder	Cash Payment	Price/Acre	Rental	Oil	Gas	Other

Legend

- 21090012
- Counties

TWELVE MILE BAYOU

BOSSIER

CROSS BAYOU

CADDO

T18N - R14W

P.O.B.

0 3,000 Feet



TRACT 45461 - Caddo Parish, Louisiana

All of the lands now or formerly constituting the beds and bottoms of all water bodies of every nature and description as to which title is vested in the State of Louisiana, together with all islands arising therein and other lands formed by accretion or by reliction, where allowed by law, excepting tax adjudicated lands, and not presently under mineral lease on September 8, 2021, situated in Caddo Parish, Louisiana, and more particularly described as follows: Beginning at a point having Coordinates of X = 1,602,041.93 and Y = 674,416.70; thence North 89 Degrees 59 Minutes 52 Seconds West 6,250.63 feet to a point on the East line of Operating Agreement No. A0275; thence North 00 degrees 04 minutes 30 seconds East 1,699.69 feet along the East line of Operating Agreement No. A0275 to a point being the Northeast corner of Operating Agreement No. A0275; thence North 89 degrees 07 minutes 08 seconds West 10,666.95 feet along the North line of Operating Agreement No. A0275 to a point being the Northwest corner of Operating Agreement No. A0275; thence North 00 degrees 00 minutes 1 seconds West 3,500.08 feet to a point having Coordinates of X = 1,585,127.82 and Y = 679,780.76; thence East 16,914.11 feet to a point having Coordinates of X = 1,602,041.93 and Y = 679,780.76; thence South 5,364.06 feet to the point of beginning, containing approximately **118 acres**, all as more particularly outlined on a plat on file in the Office of Mineral Resources, Department of Natural Resources. All bearings, distances and coordinates are based on Louisiana Coordinate System of 1927, (North or South Zone), where applicable.

NOTE: The above description of the Tract nominated for lease has been provided and corrected, where required, exclusively by the nomination party. Any mineral lease selected from this Tract and awarded by the Louisiana State Mineral and Energy Board shall be without warranty of any kind, either express, implied, or statutory, including, but not limited to, the implied warranties of merchantability and fitness for a particular purpose. Should the mineral lease awarded by the Louisiana State Mineral and Energy Board be subsequently modified, cancelled or abrogated due to the existence of conflicting leases, operating agreements, private claims or other future obligations or conditions which may affect all or any portion of the leased Tract, it shall not relieve the Lessee of the obligation to pay any bonus due thereon to the Louisiana State Mineral and Energy Board, nor shall the Louisiana State Mineral and Energy Board be obligated to refund any consideration paid by the Lessor prior to such modification, cancellation, or abrogation, including, but not limited to, bonuses, rentals and royalties.

NOTE: Lessee agrees not to erect any derrick, tank, warehouse or other equipment or structure on the leased premises nor shall lessee interfere, in any manner, with lessor's use of the property. Lessee shall have, however, the complete right to drill for, produce, extract and recover the minerals in and beneath said land by drilling or other operations conducted from the surface of other lands or by the pooling or unitization of the leased premises with other land, lease or leases in the area.

Applicant: BORDER EXPLORATION, L.L.C.

Bidder	Cash Payment	Price/ Acre	Rental	Oil	Gas	Other

Legend

21090013

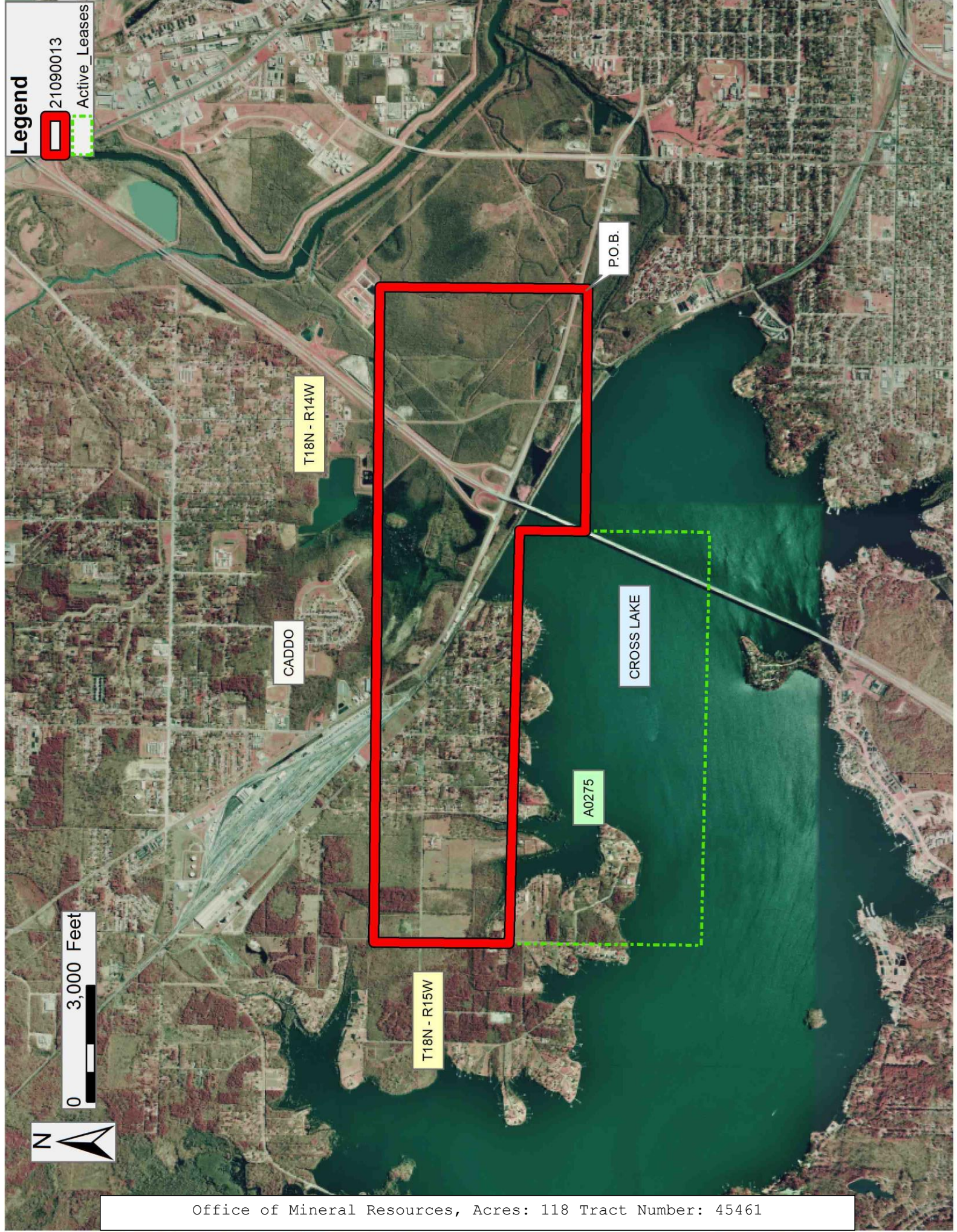
Active_Leases



0 3,000 Feet



Office of Mineral Resources, Acres: 118 Tract Number: 45461



TRACT 45462 - Caddo Parish, Louisiana

All of the lands now or formerly constituting the beds and bottoms of all water bodies of every nature and description as to which title is vested in the State of Louisiana, together with all islands arising therein and other lands formed by accretion or by reliction, where allowed by law, excepting tax adjudicated lands, and not presently under mineral lease on September 8, 2021, situated in Caddo Parish, Louisiana, and more particularly described as follows: Beginning at a point having Coordinates of X = 1,602,041.93 and Y = 674,416.70; thence South 15,206.37 feet to a point having Coordinates of X = 1,602,041.93 and Y = 659,210.32; thence West 17,900.71 feet to a point having Coordinates of X = 1,584,141.21 and Y = 659,210.32; thence North 5,063.22 feet to the southeast corner of State Lease No. 21860 and having Coordinates of X = 1,584,141.21 and Y = 664,273.54; thence North 00 degrees 17 minutes 45 seconds East 6,974.78 feet along the east line of State Lease No. 21860 to a point being the Northeast corner of State Lease No. 21860 and in the south line of Operating Agreement No. A0224 and having Coordinates of X = 1,584,177.22 and Y = 671,248.14; thence South 89 degrees 54 minutes 20 seconds East 953.23 feet along the south line of Operating Agreement No. A0224 to a point being the southeast corner of Operating Agreement No. A0224; thence North 00 degrees 01 minute 46 seconds West 79.81 feet along the east line of Operating Agreement No. A0224 to a point being the Southwest corner of Operating Agreement No. A0275; thence South 89 Degrees 22 Minutes 27 Seconds East 10,663.29 feet along the South line of Operating Agreement No. A0275 to a point being the Southeast corner of Operating Agreement No. A0275; thence North 00 degrees 10 minutes 14 seconds West 1,392.74 feet along the East line of Operating Agreement No. A0275 to a point being in the East boundary line of Operating Agreement No. A0275; thence North 00 degrees 04 minutes 30 seconds East 1,814.22 feet along the East boundary line of Operating Agreement No. A0275 to a point being in the East boundary line of Operating Agreement No. A0275; thence South 89 degrees 59 minutes 52 seconds East 6,250.63 feet to the point of beginning, containing approximately **1,785 acres**, all as more particularly outlined on a plat on file in the Office of Mineral Resources, Department of Natural Resources. All bearings, distances and coordinates are based on Louisiana Coordinate System of 1927, (North or South Zone), where applicable.

NOTE: The above description of the Tract nominated for lease has been provided and corrected, where required, exclusively by the nomination party. Any mineral lease selected from this Tract and awarded by the Louisiana State Mineral and Energy Board shall be without warranty of any kind, either express, implied, or statutory, including, but not limited to, the implied warranties of merchantability and fitness for a particular purpose. Should the mineral lease awarded by the Louisiana State Mineral and Energy Board be subsequently modified, cancelled or abrogated due to the existence of conflicting leases, operating agreements, private claims or other future obligations or conditions which may affect all or any portion of the leased Tract, it shall not relieve the Lessee of the obligation to pay any bonus due thereon to the Louisiana State Mineral and Energy Board, nor shall the Louisiana State Mineral and Energy Board be obligated to refund any

consideration paid by the Lessor prior to such modification, cancellation, or abrogation, including, but not limited to, bonuses, rentals and royalties.

NOTE: Lessee agrees not to erect any derrick, tank, warehouse or other equipment or structure on the leased premises nor shall lessee interfere, in any manner, with lessor's use of the property. Lessee shall have, however, the complete right to drill for, produce, extract and recover the minerals in and beneath said land by drilling or other operations conducted from the surface of other lands or by the pooling or unitization of the leased premises with other land, lease or leases in the area.

Applicant: BORDER EXPLORATION, L.L.C.

Bidder	Cash Payment	Price/Acre	Rental	Oil	Gas	Other

Legend

21090011
Active_Leases



0 3,000 Feet

CADDO

T18N - R15W

T18N - R14W

P.O.B.

CROSS LAKE

A0275

A0224

SL 21860

T17N - R15W

T17N - R14W

Office of Mineral Resources, Acres: 1785 Tract Number: 45462

TRACT 45463 - Avoyelles Parish, Louisiana

All of the lands now or formerly constituting the beds and bottoms of all water bodies of every nature and description as to which title is vested in the State of Louisiana, together with all islands arising therein and other lands formed by accretion or by reliction, where allowed by law, excepting tax adjudicated lands, and not presently under mineral lease on September 8, 2021, situated in Avoyelles Parish, Louisiana, and more particularly described as follows: Beginning at a point having Coordinates of X = 1,832,347.38 and Y = 842,836.41; thence East 13,780.00 feet to a point having Coordinates of X = 1,846,127.38 and Y = 842,836.41; thence South 18,480.00 feet to a point having Coordinates of X = 1,846,127.38 and Y = 824,356.41; thence West 13,780.00 feet to a point having Coordinates of X = 1,832,347.38 and Y = 824,356.41; thence North 18,480.00 feet to the point of beginning, **LESS AND EXCEPT** any right, title, and interest in lands owned by and not under lease from the State of Louisiana, on behalf of the Avoyelles Parish School Board, situated in Section 16, Township 1 South, Range 6 East, Avoyelles Parish, Louisiana, contained within the above described tract, containing approximately **31 acres**, all as more particularly outlined on a plat on file in the Office of Mineral Resources, Department of Natural Resources. All bearings, distances and coordinates are based on Louisiana Coordinate System of 1927, (North or South Zone), where applicable.

NOTE: The above description of the Tract nominated for lease has been provided and corrected, where required, exclusively by the nomination party. Any mineral lease selected from this Tract and awarded by the Louisiana State Mineral and Energy Board shall be without warranty of any kind, either express, implied, or statutory, including, but not limited to, the implied warranties of merchantability and fitness for a particular purpose. Should the mineral lease awarded by the Louisiana State Mineral and Energy Board be subsequently modified, cancelled or abrogated due to the existence of conflicting leases, operating agreements, private claims or other future obligations or conditions which may affect all or any portion of the leased Tract, it shall not relieve the Lessee of the obligation to pay any bonus due thereon to the Louisiana State Mineral and Energy Board, nor shall the Louisiana State Mineral and Energy Board be obligated to refund any consideration paid by the Lessor prior to such modification, cancellation, or abrogation, including, but not limited to, bonuses, rentals and royalties.

Applicant: AMALJ COMPANY

Bidder	Cash Payment	Price/ Acre	Rental	Oil	Gas	Other

Legend

- 21090015
- Counties

POINTE COUPEE

T1S - R6E

AVOYELLES

YELLOW BAYOU

0 3,000 Feet

P.O.B.



TRACT 45464 - Terrebonne Parish, Louisiana

All of the lands now or formerly constituting the beds and bottoms of all water bodies of every nature and description as to which title is vested in the State of Louisiana, together with all islands arising therein and other lands formed by accretion or by reliction, where allowed by law, excepting tax adjudicated lands, and not presently under mineral lease on September 8, 2021, situated in Terrebonne Parish, Louisiana, and more particularly described as follows: Beginning at a point having Coordinates of X = 2,236,255.11 and Y = 247,040.95; thence West 9,100.71 feet to a point on the Eastern boundary of State Lease No. 20162, as amended, having Coordinates of X = 2,227,154.40 and Y = 247,040.95; thence along the boundary of said State Lease No. 20162, as amended, the following courses: North 30 degrees 33 minutes 40 seconds West 329.86 feet to a point having Coordinates of X = 2,226,986.68 and Y = 247,324.99; North 33 degrees 53 minutes 46 seconds West 75.53 feet to a point having Coordinates of X = 2,226,944.56 and Y = 247,387.68; North 40 degrees 20 minutes 04 seconds West 90.75 feet to a point having Coordinates of X = 2,226,885.82 and Y = 247,456.86; North 46 degrees 24 minutes 57 seconds West 122.19 feet to a point having Coordinates of X = 2,226,797.31 and Y = 247,541.10; North 50 degrees 39 minutes 15 seconds West 123.15 feet to a point having Coordinates of X = 2,226,702.07 and Y = 247,619.18; North 53 degrees 04 minutes 56 seconds West 127.09 feet to a point having Coordinates of X = 2,226,600.46 and Y = 247,695.52; North 56 degrees 21 minutes 24 seconds West 157.29 feet to a point having Coordinates of X = 2,226,469.52 and Y = 247,782.66; North 60 degrees 27 minutes 13 seconds West 141.63 feet to a point having Coordinates of X = 2,226,346.31 and Y = 247,852.50; North 64 degrees 06 minutes 46 seconds West 127.37 feet to a point having Coordinates of X = 2,226,231.72 and Y = 247,908.11; North 65 degrees 34 minutes 59 seconds West 169.56 feet to a point having Coordinates of X = 2,226,077.33 and Y = 247,978.20; North 64 degrees 43 minutes 31 seconds West 128.30 feet to a point having Coordinates of X = 2,225,961.31 and Y = 248,032.98; North 64 degrees 01 minutes 32 seconds West 86.79 feet to a point having Coordinates of X = 2,225,883.29 and Y = 248,070.99; North 54 degrees 15 minutes 21 seconds West 42.87 feet to a point having Coordinates of X = 2,225,848.50 and Y = 248,096.03; North 43 degrees 05 minutes 41 seconds West 52.33 feet to a point having Coordinates of X = 2,225,812.75 and Y = 248,134.24; North 37 degrees 21 minutes 54 seconds West 121.03 feet to a point having Coordinates of X = 2,225,739.30 and Y = 248,230.43; North 34 degrees 53 minutes 24 seconds West 120.52 feet to a point having Coordinates of X = 2,225,670.36 and Y = 248,329.29; North 35 degrees 22 minutes 58 seconds West 197.91 feet to a point having Coordinates of X = 2,225,555.76 and Y = 248,490.65; North 35 degrees 23 minutes 55 seconds West 224.27 feet to a point having Coordinates of X = 2,225,425.85 and Y = 248,673.46; North 36 degrees 14 minutes 42 seconds West 228.66 feet to a point having Coordinates of X = 2,225,290.66 and Y = 248,857.87; North 37 degrees 44 minutes 51 seconds West 268.07 feet to a point having Coordinates of X = 2,225,126.55 and Y = 249,069.84; and North 39 degrees 07 minutes 29 seconds West 119.86 feet to the most Eastern Southeast corner of State Lease No. 19570, as amended, having Coordinates of X = 2,225,050.91 and Y = 249,162.83; thence along the boundary of said State Lease No. 19570,

as amended, the following courses: North 39 degrees 07 minutes 29 seconds West 65.74 feet to a point having Coordinates of X = 2,225,009.43 and Y = 249,213.83; North 41 degrees 20 minutes 39 seconds West 206.27 feet to a point having Coordinates of X = 2,224,873.17 and Y = 249,368.69; North 42 degrees 53 minutes 47 seconds West 106.92 feet to a point having Coordinates of X = 2,224,800.39 and Y = 249,447.02; West 1,972.37 feet to a point having Coordinates of X = 2,222,828.01 and Y = 249,447.02; South 01 degrees 50 minutes 04 seconds East 26.72 feet to a point having Coordinates of X = 2,222,828.87 and Y = 249,420.31; South 37 degrees 53 minutes 33 seconds West 18.92 feet to a point having Coordinates of X = 2,222,817.25 and Y = 249,405.38; South 61 degrees 19 minutes 21 seconds West 47.55 feet to a point having Coordinates of X = 2,222,775.53 and Y = 249,382.56; South 68 degrees 39 minutes 22 seconds West 100.45 feet to a point having Coordinates of X = 2,222,681.97 and Y = 249,346.00; South 77 degrees 01 minutes 06 West 79.46 feet to a point having Coordinates of X = 2,222,604.54 and Y = 249,328.15; South 80 degrees 15 minutes 16 seconds West 77.45 feet to a point having Coordinates of X = 2,222,528.21 and Y = 249,315.04; South 86 degrees 05 minutes 48 seconds West 71.98 feet to a point having Coordinates of X = 2,222,456.40 and Y = 249,310.14; North 87 degrees 10 minutes 46 seconds West 64.22 feet to a point having Coordinates of X = 2,222,392.26 and Y = 249,313.30; North 81 degrees 51 minutes 54 seconds West 47.77 feet to a point having Coordinates of X = 2,222,344.97 and Y = 249,320.06; North 78 degrees 13 minutes 37 seconds West 59.94 feet to a point having Coordinates of X = 2,222,286.29 and Y = 249,332.29; North 73 degrees 40 minutes 55 seconds West 54.20 feet to a point having Coordinates of X = 2,222,234.27 and Y = 249,347.52; North 68 degrees 40 minutes 54 seconds West 54.63 feet to a point having Coordinates of X = 2,222,183.38 and Y = 249,367.38; North 63 degrees 32 minutes 33 seconds West 50.01 feet to a point having Coordinates of X = 2,222,138.61 and Y = 249,389.66; North 59 degrees 24 minutes 36 seconds West 88.37 feet to a point having Coordinates of X = 2,222,062.54 and Y = 249,434.63; North 57 degrees 26 minutes 19 seconds West 23.01 feet to a point having Coordinates of X = 2,222,043.14 and Y = 249,447.02; West 164.17 feet to a point having Coordinates of X = 2,221,878.97 and Y = 249,447.02; South 408.62 feet to a point having Coordinates of X = 2,221,878.97 and Y = 249,038.40; South 61 degrees 56 minutes 17 seconds East 91.68 feet to a point having Coordinates of X = 2,221,959.87 and Y = 248,995.27; South 66 degrees 47 minutes 48 seconds East 93.88 feet to a point having Coordinates of X = 2,222,046.16 and Y = 248,958.28; South 71 degrees 23 minutes 39 seconds East 56.17 feet to a point having Coordinates of X = 2,222,099.39 and Y = 248,940.36; and South 75 degrees 40 minutes 49 seconds East 560.51 feet to a point on the Northern boundary of said State Lease No. 20162, as amended, having Coordinates of X = 2,222,642.48 and Y = 248,801.73; thence along the boundary of said State Lease No. 20162, as amended, the following courses: South 75 degrees 40 minutes 43 seconds East 17.25 feet to a point having Coordinates of X = 2,222,659.20 and Y = 248,797.46; South 67 degrees 00 minutes 48 seconds West 81.84 feet to a point having Coordinates of X = 2,222,583.86 and Y = 248,765.50; South 73 degrees 42 minutes 25 seconds West 53.89 feet to a point having Coordinates of X = 2,222,532.13 and Y = 248,750.38; South 86 degrees 51 minutes 43 seconds West 87.32 feet to a point

having Coordinates of X = 2,222,444.94 and Y = 248,745.60; North 86 degrees 03 minutes 23 seconds West 134.21 feet to a point having Coordinates of X = 2,222,311.05 and Y = 248,754.83; North 89 degrees 20 minutes 34 seconds West 147.34 feet to a point having Coordinates of X = 2,222,163.72 and Y = 248,756.52; North 85 degrees 24 minutes 14 seconds West 96.97 feet to a point having Coordinates of X = 2,222,067.06 and Y = 248,764.29; North 79 degrees 16 minutes 16 seconds West 136.38 feet to a point having Coordinates of X = 2,221,933.06 and Y = 248,789.68; North 74 degrees 27 minutes 07 seconds West 56.14 feet to a point having Coordinates of X = 2,221,878.97 and Y = 248,804.73; and South 142.62 feet to point having Coordinates of X = 2,221,878.97 and Y = 248,662.11; thence South 2,545.24 feet to a point on the Northern boundary of State Lease No. 21744, as amended, having Coordinates of X = 2,221,878.97 and Y = 246,116.87; thence along the boundary of said State Lease No. 21744, as amended, the following courses: South 78 degrees 56 minutes 28 seconds West 2,178.42 feet to a point having Coordinates of X = 2,219,741.00 and Y = 245,699.01 and South 00 degrees 06 minutes 29 seconds West approximately 1,392 to a point on the Northern boundary of State Lease No. 2395, as amended; thence Westerly approximately 835 feet along the Northern boundary of said State Lease No. 2395, as amended, to a point on the Eastern boundary of State Lease No. 16446, as amended; thence along the boundary of said State Lease No. 16446, as amended, the following courses: North 35 degrees 12 minutes 00 seconds West approximately 425 feet to a point having Coordinates of X = 2,218,658.33 and Y = 244,667.90 and North 35 degrees 43 minutes 47 seconds West 752.72 feet to a point having Coordinates of X = 2,218,218.77 and Y = 245,278.94; thence North 550.97 feet to a point on the Southern boundary of State Lease No. 21698, having Coordinates of X = 2,218,218.77 and Y = 245,829.91; thence along the boundary of said State Lease No. 21698, the following courses: South 79 degrees 57 minutes 32 seconds East 101.58 feet to a point having Coordinates of X = 2,218,318.79 and Y = 245,812.20; Northwesterly on a curve to the right having a radius of 3,010.00 feet to a point having Coordinates of X = 2,218,218.77 and Y = 245,952.95, thence North 11,147.05 feet to a point having Coordinates of X = 2,218,218.77 and Y = 257,100.00; thence East 18,036.34 feet to a point having Coordinates of X = 2,236,255.11 and Y = 257,100.00; thence South 10,059.05 feet to the point of beginning, containing approximately **154 acres**, all as more particularly outlined on a plat on file in the Office of Mineral Resources, Department of Natural Resources. All bearings, distances and coordinates are based on Louisiana Coordinate System of 1927, (North or South Zone), where applicable.

NOTE: The above description of the Tract nominated for lease has been provided and corrected, where required, exclusively by the nomination party. Any mineral lease selected from this Tract and awarded by the Louisiana State Mineral and Energy Board shall be without warranty of any kind, either express, implied, or statutory, including, but not limited to, the implied warranties of merchantability and fitness for a particular purpose. Should the mineral lease awarded by the Louisiana State Mineral and Energy Board be subsequently modified, cancelled or abrogated due to the existence of conflicting leases, operating agreements, private claims or other future

obligations or conditions which may affect all or any portion of the leased Tract, it shall not relieve the Lessee of the obligation to pay any bonus due thereon to the Louisiana State Mineral and Energy Board, nor shall the Louisiana State Mineral and Energy Board be obligated to refund any consideration paid by the Lessor prior to such modification, cancellation, or abrogation, including, but not limited to, bonuses, rentals and royalties.

NOTE: The State of Louisiana does hereby reserve, and this lease shall be subject to, the imprescriptible right of surface use in the nature of a servitude in favor of the Department of Natural Resources, including its Offices and Commissions, for the sole purpose of implementing, constructing, servicing and maintaining approved coastal zone management and/or restoration projects. Utilization of any and all rights derived under this lease by the mineral lessee, its agents, successors or assigns, shall not interfere with nor hinder the reasonable surface use by the Department of Natural Resources, its Offices or Commissions, as herein above reserved.

Applicant: TARTER OIL & GAS, INC.

Bidder	Cash Payment	Price/Acre	Rental	Oil	Gas	Other

Legend



21090019

Active_Leases



0 2,500 Feet

TERREBONNE

BAYOU PETIT CAILLOU

T19S - R18E

BAYOU TERREBONNE

P.O.B.

SL 19570

SL 20162

T20S - R18E

SL 21744

SL 2395

SL 21698

SL 16446

TRACT 45465 - Terrebonne Parish, Louisiana

All of the lands now or formerly constituting the beds and bottoms of all water bodies of every nature and description as to which title is vested in the State of Louisiana, together with all islands arising therein and other lands formed by accretion or by reliction, where allowed by law, excepting tax adjudicated lands, and not presently under mineral lease on September 8, 2021, situated in Terrebonne Parish, Louisiana, and more particularly described as follows: Beginning at a point having Coordinates of X = 2,236,255.11 and Y = 247,040.95; thence South 11,351.44 feet to a point having Coordinates of X = 2,236,255.11 and Y = 235,689.51; thence North 77 degrees 51 minutes 17 seconds West approximately 6,546 feet to the Southeast corner of State Lease No. 2906, as amended; thence along the boundary of said State Lease No. 2906, as amended, the following courses: Northerly approximately 6,300 feet and Westerly approximately 7,772 feet to the Southeast corner of State Lease No. 21744, as amended; thence along the boundary of said State Lease No. 21744, as amended, the following courses: North 02 degrees 11 minutes 52 seconds West approximately 1,236 feet to a point having Coordinates of X = 2,222,093.05 and Y = 244,730.68; North 02 degrees 11 minutes 52 seconds West 499.83 feet to a point having Coordinates of X = 2,222,073.88 and Y = 245,230.15; North 02 degrees 11 minutes 53 seconds West 918.61 feet to a point having Coordinates of X = 2,222,038.65 and Y = 246,148.08; and South 78 degrees 56 minutes 28 seconds West 162.70 feet to a point having Coordinates of X = 2,221,878.97 and Y = 246,116.87; thence North 2,545.24 feet to the Southwest corner of State Lease No. 20162, as amended, having Coordinates of X = 2,221,878.97 and Y = 248,662.11; thence along the boundary of said State Lease No. 20162, as amended, the following courses: South 64 degrees 11 minutes 33 seconds East 40.63 feet to a point having Coordinates of X = 2,221,915.55 and Y = 248,644.42; South 66 degrees 16 minutes 41 seconds East 69.15 feet to a point having Coordinates of X = 2,221,978.86 and Y = 248,616.60; South 68 degrees 10 minutes 02 seconds East 104.25 to a point having Coordinates of X = 2,222,075.63 and Y = 248,577.83; South 70 degrees 41 minutes 45 seconds East 87.79 feet to a point having Coordinates of X = 2,222,158.48 and Y = 248,548.81; South 74 degrees 27 minutes 23 seconds East 109.15 feet to a point having Coordinates of X = 2,222,263.64 and Y = 248,519.56; South 78 degrees 40 minutes 40 seconds East 79.08 feet to a point having Coordinates of X = 2,222,341.18 and Y = 248,504.03; South 83 degrees 25 minutes 56 seconds East 245.63 feet to a point having Coordinates of X = 2,222,585.20 and Y = 248,475.94; South 82 degrees 13 minutes 48 seconds East 297.63 feet to a point having Coordinates of X = 2,222,880.10 and Y = 248,435.70; South 79 degrees 58 minutes 07 seconds East 581.73 feet to a point having Coordinates of X = 2,223,452.94 and Y = 248,334.37; South 80 degrees 05 minutes 31 seconds East 412.75 feet to a point having Coordinates of X = 2,223,859.53 and Y = 248,263.35; South 77 degrees 55 minutes 16 seconds East 63.70 feet to a point having Coordinates of X = 2,223,921.82 and Y = 248,250.02; South 72 degrees 40 minutes 14 seconds East 127.71 feet to a point having Coordinates of X = 2,224,043.73 and Y = 248,211.98; South 66 degrees 53 minutes 12 seconds East 153.38 feet to a point having Coordinates of X = 2,224,184.80 and Y = 248,151.77; South 64 degrees 31 minutes 48 seconds East 379.59 feet to a point having

Coordinates of X = 2,224,527.50 and Y = 247,988.53; South 56 degrees 19 minutes 41 seconds East 89.46 feet to a point having Coordinates of X = 2,224,601.95 and Y = 247,938.93; South 51 degrees 38 minutes 16 seconds East 91.94 feet to a point having Coordinates of X = 2,224,674.04 and Y = 247,881.87; South 49 degrees 09 minutes 24 seconds East 137.65 feet to a point having Coordinates of X = 2,224,778.17 and Y = 247,791.85; South 47 degrees 18 minutes 08 seconds East 202.26 feet to a point having Coordinates of X = 2,224,926.82 and Y = 247,654.69; South 46 degrees 20 minutes 14 seconds East 192.71 feet to a point having Coordinates of X = 2,225,066.23 and Y = 247,521.64; South 45 degrees 59 minutes 19 seconds East 256.95 feet to a point having Coordinates of X = 2,225,251.03 and Y = 247,343.11; South 46 degrees 04 minutes 32 seconds East 128.48 feet to a point having Coordinates of X = 2,225,343.57 and Y = 247,253.98; South 46 degrees 26 minutes 29 seconds East 55.30 feet to a point having Coordinates of X = 2,225,383.65 and Y = 247,215.87; South 80 degrees 12 minutes 00 seconds East 1,625.63 feet to a point having Coordinates of X = 2,226,985.55 and Y = 246,939.17; North 13 degrees 25 minutes 07 seconds West 104.64 feet to a point having Coordinates of X = 2,226,961.27 and Y = 247,040.95; and East 193.13 feet to a point having Coordinates of X = 2,227,154.40 and Y = 247,040.95; thence East 9,100.71 feet to the point of beginning, **LESS AND EXCEPT** any right, title, and interest in lands owned by and not under lease from the State of Louisiana, on behalf of the Terrebone Parish School Board, situated in Section 16, Township 20 South, Range 18 East, Terrebone Parish, Louisiana. The above described tract contains approximately **55 acres**, all as more particularly outlined on a plat on file in the Office of Mineral Resources, Department of Natural Resources. All bearings, distances and coordinates are based on Louisiana Coordinate System of 1927, (North or South Zone), where applicable.

NOTE: The above description of the Tract nominated for lease has been provided and corrected, where required, exclusively by the nomination party. Any mineral lease selected from this Tract and awarded by the Louisiana State Mineral and Energy Board shall be without warranty of any kind, either express, implied, or statutory, including, but not limited to, the implied warranties of merchantability and fitness for a particular purpose. Should the mineral lease awarded by the Louisiana State Mineral and Energy Board be subsequently modified, cancelled or abrogated due to the existence of conflicting leases, operating agreements, private claims or other future obligations or conditions which may affect all or any portion of the leased Tract, it shall not relieve the Lessee of the obligation to pay any bonus due thereon to the Louisiana State Mineral and Energy Board, nor shall the Louisiana State Mineral and Energy Board be obligated to refund any consideration paid by the Lessor prior to such modification, cancellation, or abrogation, including, but not limited to, bonuses, rentals and royalties.

NOTE: The State of Louisiana does hereby reserve, and this lease shall be subject to, the imprescriptible right of surface use in the nature of a servitude in favor of the Department of Natural Resources, including its Offices and Commissions, for the sole purpose of implementing, constructing,

servicing and maintaining approved coastal zone management and/or restoration projects. Utilization of any and all rights derived under this lease by the mineral lessee, its agents, successors or assigns, shall not interfere with nor hinder the reasonable surface use by the Department of Natural Resources, its Offices or Commissions, as herein above reserved.

Applicant: TARTER OIL & GAS, INC.

Bidder	Cash Payment	Price/Acre	Rental	Oil	Gas	Other

Legend

21090017



Active_Leases



0 2,500 Feet

TERREBONNE

BAYOU PETIT CAILLOU

SL 19570

SL 20162

BAYOU TERREBONNE

P.O.B.

SL 21744

SL 2906

T20S - R18E

TRACT 45466 - Terrebonne Parish, Louisiana

All of the lands now or formerly constituting the beds and bottoms of all water bodies of every nature and description as to which title is vested in the State of Louisiana, together with all islands arising therein and other lands formed by accretion or by reliction, where allowed by law, excepting tax adjudicated lands, and not presently under mineral lease on September 8, 2021, situated in Terrebonne Parish, Louisiana, and more particularly described as follows: Beginning at a point having Coordinates of X = 2,236,255.11 and Y = 235,689.51; thence South 6,189.51 feet to a point having Coordinates of X = 2,236,255.11 and Y = 229,500.00; thence West 18,080.00 feet to a point having Coordinates of X = 2,218,175.11 and Y = 229,500.00; thence North approximately 10,014 feet to the Southwest corner of State Lease No. 2395, as amended; thence Southeasterly approximately 2,670 feet along the Southern boundary of said State Lease No. 2395, as amended, to its Southeast corner, said corner also being the Southwest corner of State Lease No. 2906, as amended; thence Southeasterly approximately 9,300 feet along the Southern boundary of said State Lease No. 2906, as amended, to its Southeast corner; thence South 77 degrees 51 minutes 17 seconds East approximately 6,546 feet to the point of beginning, containing approximately **498 acres**, all as more particularly outlined on a plat on file in the Office of Mineral Resources, Department of Natural Resources. All bearings, distances and coordinates are based on Louisiana Coordinate System of 1927, (North or South Zone), where applicable.

NOTE: The above description of the Tract nominated for lease has been provided and corrected, where required, exclusively by the nomination party. Any mineral lease selected from this Tract and awarded by the Louisiana State Mineral and Energy Board shall be without warranty of any kind, either express, implied, or statutory, including, but not limited to, the implied warranties of merchantability and fitness for a particular purpose. Should the mineral lease awarded by the Louisiana State Mineral and Energy Board be subsequently modified, cancelled or abrogated due to the existence of conflicting leases, operating agreements, private claims or other future obligations or conditions which may affect all or any portion of the leased Tract, it shall not relieve the Lessee of the obligation to pay any bonus due thereon to the Louisiana State Mineral and Energy Board, nor shall the Louisiana State Mineral and Energy Board be obligated to refund any consideration paid by the Lessor prior to such modification, cancellation, or abrogation, including, but not limited to, bonuses, rentals and royalties.

NOTE: The State of Louisiana does hereby reserve, and this lease shall be subject to, the imprescriptible right of surface use in the nature of a servitude in favor of the Department of Natural Resources, including its Offices and Commissions, for the sole purpose of implementing, constructing, servicing and maintaining approved coastal zone management and/or restoration projects. Utilization of any and all rights derived under this lease by the mineral lessee, its agents, successors or assigns, shall not interfere with nor hinder the reasonable surface use by the Department of Natural Resources, its Offices or Commissions, as herein above reserved.

Applicant: TARTER OIL & GAS, INC.

Bidder	Cash Payment	Price/Acre	Rental	Oil	Gas	Other

Legend

21090018



Active_Leases



0 2,500 Feet



Office of Mineral Resources, Acres: 498 Tract Number: 45466

