

**TRACT 45473 - St. Martin Parish, Louisiana**

All of the lands now or formerly constituting the beds and bottoms of all water bodies of every nature and description as to which title is vested in the State of Louisiana, together with all islands arising therein and other lands formed by accretion or by reliction, where allowed by law, excepting tax adjudicated lands, and not presently under mineral lease on October 13, 2021, situated in St. Martin Parish, Louisiana, and more particularly described as follows: Beginning at a point having Coordinates of X = 1,908,713.27 and Y = 584,794.17; thence East 3,706.73 feet to a point having Coordinates of X = 1,912,420.00 and Y = 584,794.17; thence South 36 degrees 21 minutes 13 seconds East 3,098.44 feet to a point having Coordinates of X = 1,914,256.65 and Y = 582,298.77; thence West 5,543.38 feet to a point having Coordinates of X = 1,908,713.27 and Y = 582,298.77; thence North 2,495.40 feet to the point of beginning, containing approximately **44 acres**, all as more particularly outlined on a plat on file in the Office of Mineral Resources, Department of Natural Resources. All bearings, distances and coordinates are based on Louisiana Coordinate System of 1927, (North or South Zone), where applicable.

NOTE: The above description of the Tract nominated for lease has been provided and corrected, where required, exclusively by the nomination party. Any mineral lease selected from this Tract and awarded by the Louisiana State Mineral and Energy Board shall be without warranty of any kind, either express, implied, or statutory, including, but not limited to, the implied warranties of merchantability and fitness for a particular purpose. Should the mineral lease awarded by the Louisiana State Mineral and Energy Board be subsequently modified, cancelled or abrogated due to the existence of conflicting leases, operating agreements, private claims or other future obligations or conditions which may affect all or any portion of the leased Tract, it shall not relieve the Lessee of the obligation to pay any bonus due thereon to the Louisiana State Mineral and Energy Board, nor shall the Louisiana State Mineral and Energy Board be obligated to refund any consideration paid by the Lessor prior to such modification, cancellation, or abrogation, including, but not limited to, bonuses, rentals and royalties.

NOTE: This acreage is entirely within the boundary of the Atchafalaya Basin Legal Area.

Applicant: THEOPHILUS OIL, GAS & LAND SERVICES, LLC

Bidder	Cash Payment	Price/Acre	Rental	Oil	Gas	Other



Legend



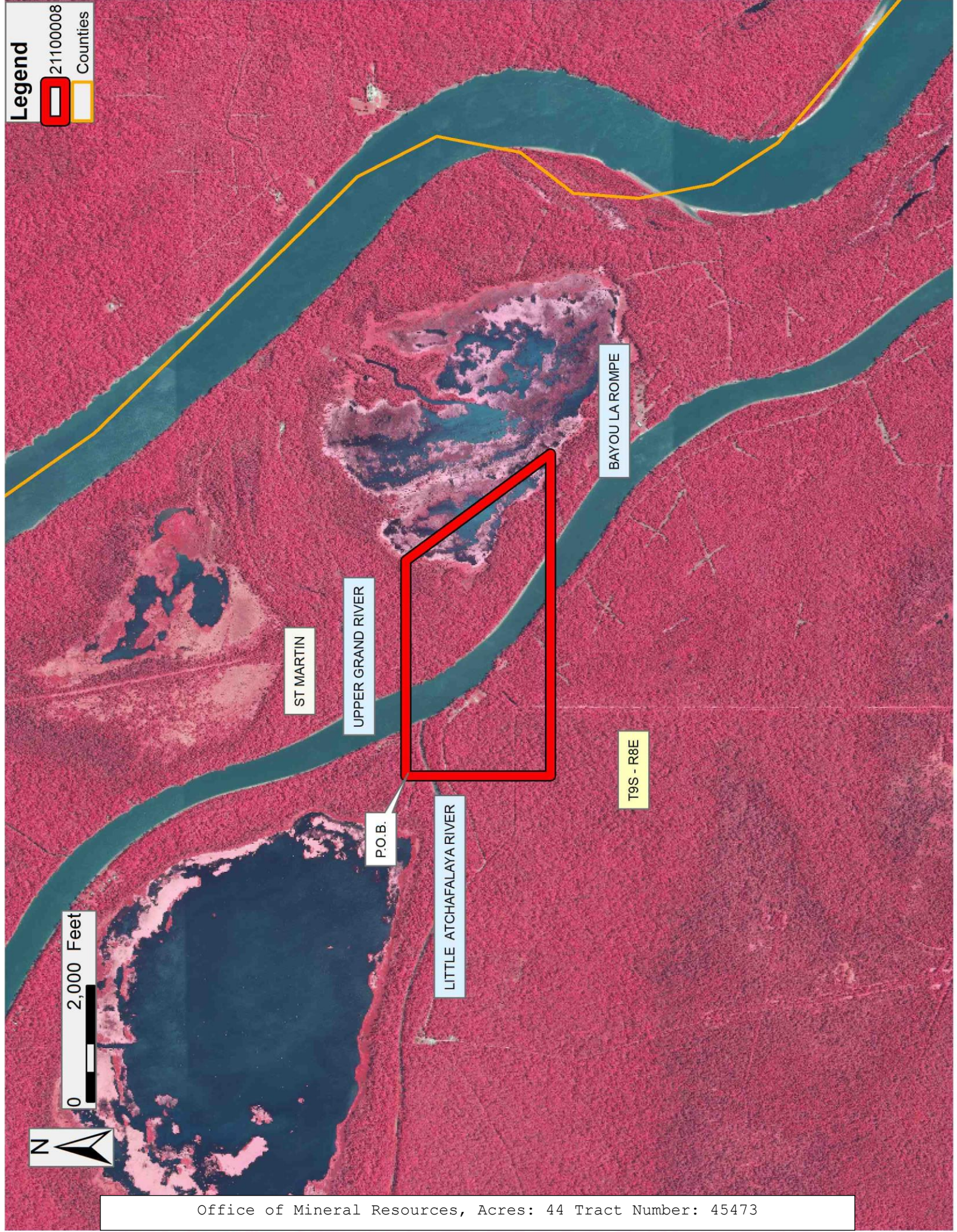
21100008

Counties



0 2,000 Feet

Office of Mineral Resources, Acres: 44 Tract Number: 45473



ST MARTIN

UPPER GRAND RIVER

P.O.B.

LITTLE ATCHAFALAYA RIVER

BAYOU LA ROMPE

T9S - R8E



**TRACT 45474 - St. Martin Parish, Louisiana**

All of the lands now or formerly constituting the beds and bottoms of all water bodies of every nature and description as to which title is vested in the State of Louisiana, together with all islands arising therein and other lands formed by accretion or by reliction, where allowed by law, excepting tax adjudicated lands, and not presently under mineral lease on October 13, 2021, situated in St. Martin Parish, Louisiana, and more particularly described as follows: Beginning at a point having Coordinates of X = 1,908,713.27 and Y = 582,298.77; thence East 5,543.38 feet to a point having Coordinates of X = 1,914,256.65 and Y = 582,298.77; thence South 36 degrees 21 minutes 13 seconds East 3,098.44 feet to a point having Coordinates of X = 1,916,093.30 and Y = 579,803.37; thence West 7,380.03 feet to a point having Coordinates of X = 1,908,713.27 and Y = 579,803.37; thence North 2,495.40 feet to the point of beginning, containing approximately **52 acres**, all as more particularly outlined on a plat on file in the Office of Mineral Resources, Department of Natural Resources. All bearings, distances and coordinates are based on Louisiana Coordinate System of 1927, (North or South Zone), where applicable.

NOTE: The above description of the Tract nominated for lease has been provided and corrected, where required, exclusively by the nomination party. Any mineral lease selected from this Tract and awarded by the Louisiana State Mineral and Energy Board shall be without warranty of any kind, either express, implied, or statutory, including, but not limited to, the implied warranties of merchantability and fitness for a particular purpose. Should the mineral lease awarded by the Louisiana State Mineral and Energy Board be subsequently modified, cancelled or abrogated due to the existence of conflicting leases, operating agreements, private claims or other future obligations or conditions which may affect all or any portion of the leased Tract, it shall not relieve the Lessee of the obligation to pay any bonus due thereon to the Louisiana State Mineral and Energy Board, nor shall the Louisiana State Mineral and Energy Board be obligated to refund any consideration paid by the Lessor prior to such modification, cancellation, or abrogation, including, but not limited to, bonuses, rentals and royalties.

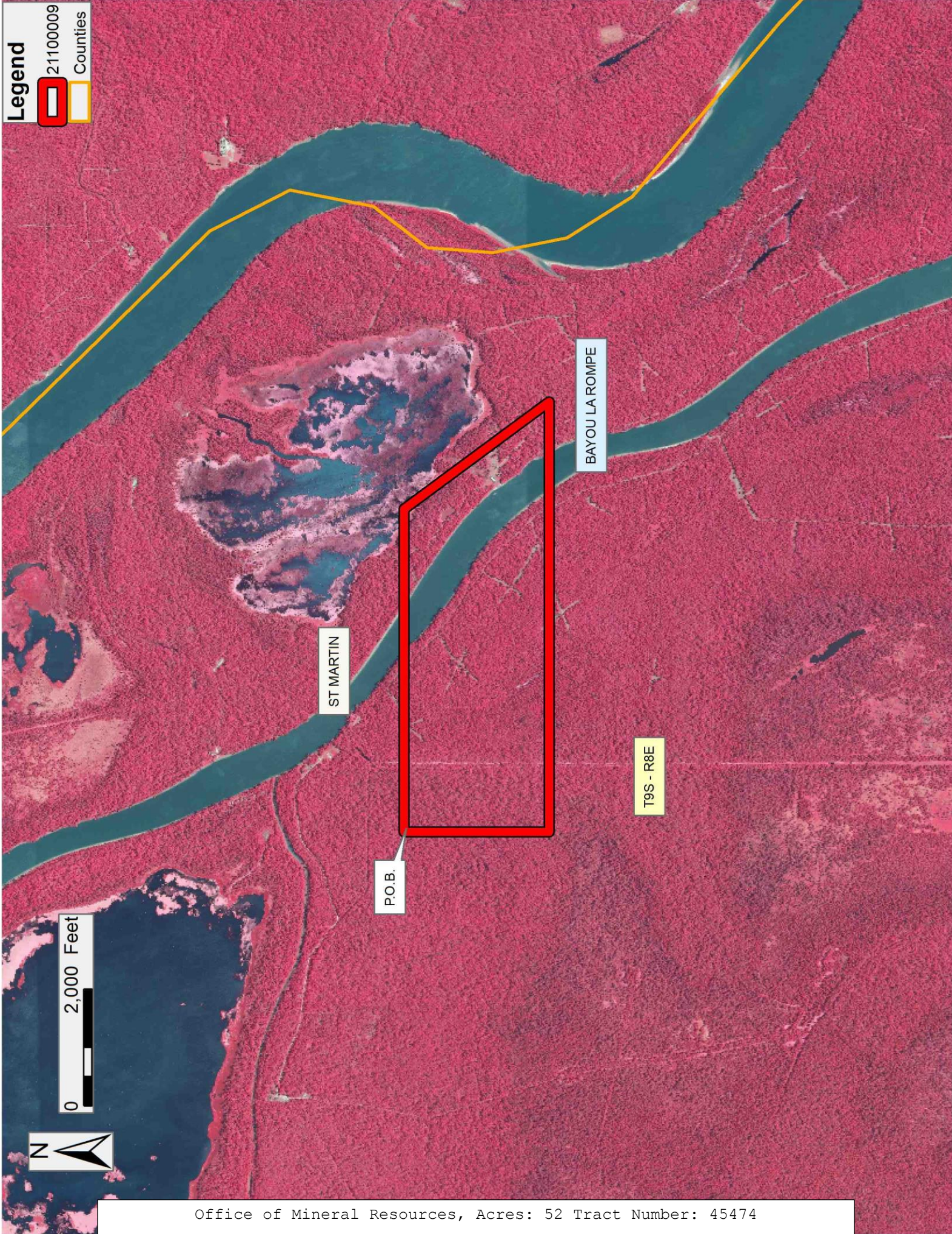
NOTE: This acreage is entirely within the boundary of the Atchafalaya Basin Legal Area.

Applicant: THEOPHILUS OIL, GAS & LAND SERVICES, LLC

Bidder	Cash Payment	Price/Acre	Rental	Oil	Gas	Other



Legend



ST MARTIN

BAYOU LA ROMPE

P.O.B.

T9S - R8E

0 2,000 Feet





**TRACT 45475 - St. Martin Parish, Louisiana**

All of the lands now or formerly constituting the beds and bottoms of all water bodies of every nature and description as to which title is vested in the State of Louisiana, together with all islands arising therein and other lands formed by accretion or by reliction, where allowed by law, excepting tax adjudicated lands, and not presently under mineral lease on October 13, 2021, situated in St. Martin Parish, Louisiana, and more particularly described as follows: Beginning at a point having Coordinates of X = 1,908,713.27 and Y = 579,803.37; thence East 7,380.03 feet to a point having Coordinates of X = 1,916,093.30 and Y = 579,803.37; thence South 36 degrees 21 minutes 13 seconds East 3,098.44 feet to a point having Coordinates of X = 1,917,929.95 and Y = 577,307.97; thence West 9,216.68 feet to a point having Coordinates of X = 1,908,713.27 and Y = 577,307.97; thence North 2,495.40 feet to the point of beginning, containing approximately **31 acres**, all as more particularly outlined on a plat on file in the Office of Mineral Resources, Department of Natural Resources. All bearings, distances and coordinates are based on Louisiana Coordinate System of 1927, (North or South Zone), where applicable.

NOTE: The above description of the Tract nominated for lease has been provided and corrected, where required, exclusively by the nomination party. Any mineral lease selected from this Tract and awarded by the Louisiana State Mineral and Energy Board shall be without warranty of any kind, either express, implied, or statutory, including, but not limited to, the implied warranties of merchantability and fitness for a particular purpose. Should the mineral lease awarded by the Louisiana State Mineral and Energy Board be subsequently modified, cancelled or abrogated due to the existence of conflicting leases, operating agreements, private claims or other future obligations or conditions which may affect all or any portion of the leased Tract, it shall not relieve the Lessee of the obligation to pay any bonus due thereon to the Louisiana State Mineral and Energy Board, nor shall the Louisiana State Mineral and Energy Board be obligated to refund any consideration paid by the Lessor prior to such modification, cancellation, or abrogation, including, but not limited to, bonuses, rentals and royalties.

NOTE: This acreage is entirely within the boundary of the Atchafalaya Basin Legal Area.

Applicant: THEOPHILUS OIL, GAS & LAND SERVICES, LLC

Bidder	Cash Payment	Price/Acre	Rental	Oil	Gas	Other

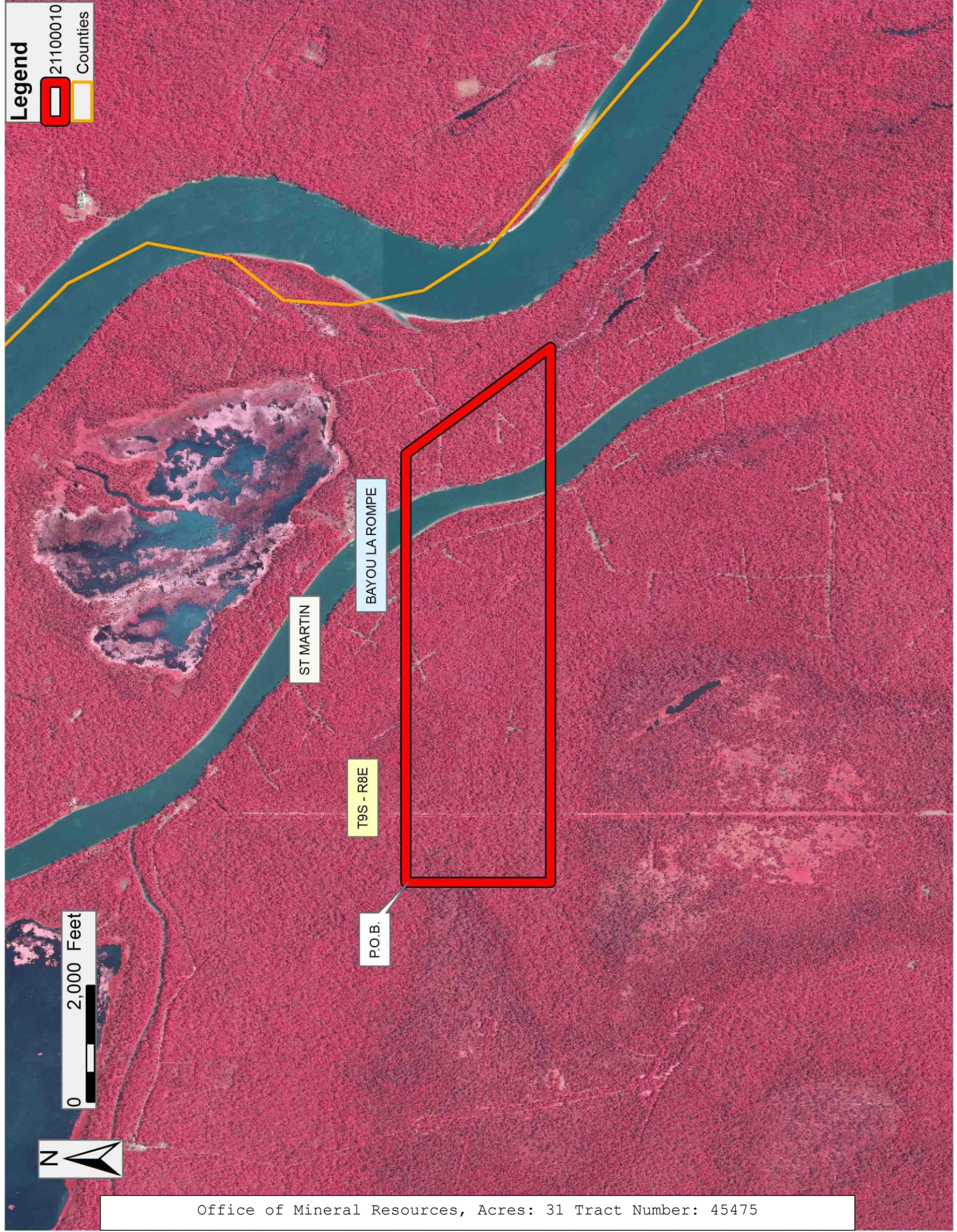


Legend



0 2,000 Feet

Office of Mineral Resources, Acres: 31 Tract Number: 45475



ST MARTIN

BAYOU LA ROMPE

T9S - R8E

P.O.B.



**TRACT 45476 - St. Martin Parish, Louisiana**

All of the lands now or formerly constituting the beds and bottoms of all water bodies of every nature and description as to which title is vested in the State of Louisiana, together with all islands arising therein and other lands formed by accretion or by reliction, where allowed by law, excepting tax adjudicated lands, and not presently under mineral lease on October 13, 2021, situated in St. Martin Parish, Louisiana, and more particularly described as follows: Beginning at a point having Coordinates of X = 1,908,713.27 and Y = 577,307.97; thence East 9,216.68 feet to a point having Coordinates of X = 1,917,929.95 and Y = 577,307.97; thence South 36 degrees 21 minutes 13 seconds East 3,098.44 feet to a point having Coordinates of X = 1,919,766.60 and Y = 574,812.57; thence West 11,053.33 feet to a point having Coordinates of X = 1,908,713.27 and Y = 574,812.57; thence North 2,495.40 feet to the point of beginning, containing approximately **37 acres**, all as more particularly outlined on a plat on file in the Office of Mineral Resources, Department of Natural Resources. All bearings, distances and coordinates are based on Louisiana Coordinate System of 1927, (North or South Zone), where applicable.

NOTE: The above description of the Tract nominated for lease has been provided and corrected, where required, exclusively by the nomination party. Any mineral lease selected from this Tract and awarded by the Louisiana State Mineral and Energy Board shall be without warranty of any kind, either express, implied, or statutory, including, but not limited to, the implied warranties of merchantability and fitness for a particular purpose. Should the mineral lease awarded by the Louisiana State Mineral and Energy Board be subsequently modified, cancelled or abrogated due to the existence of conflicting leases, operating agreements, private claims or other future obligations or conditions which may affect all or any portion of the leased Tract, it shall not relieve the Lessee of the obligation to pay any bonus due thereon to the Louisiana State Mineral and Energy Board, nor shall the Louisiana State Mineral and Energy Board be obligated to refund any consideration paid by the Lessor prior to such modification, cancellation, or abrogation, including, but not limited to, bonuses, rentals and royalties.

NOTE: This acreage is entirely within the boundary of the Atchafalaya Basin Legal Area.



Applicant: THEOPHILUS OIL, GAS & LAND SERVICES, LLC

Bidder	Cash Payment	Price/Acre	Rental	Oil	Gas	Other

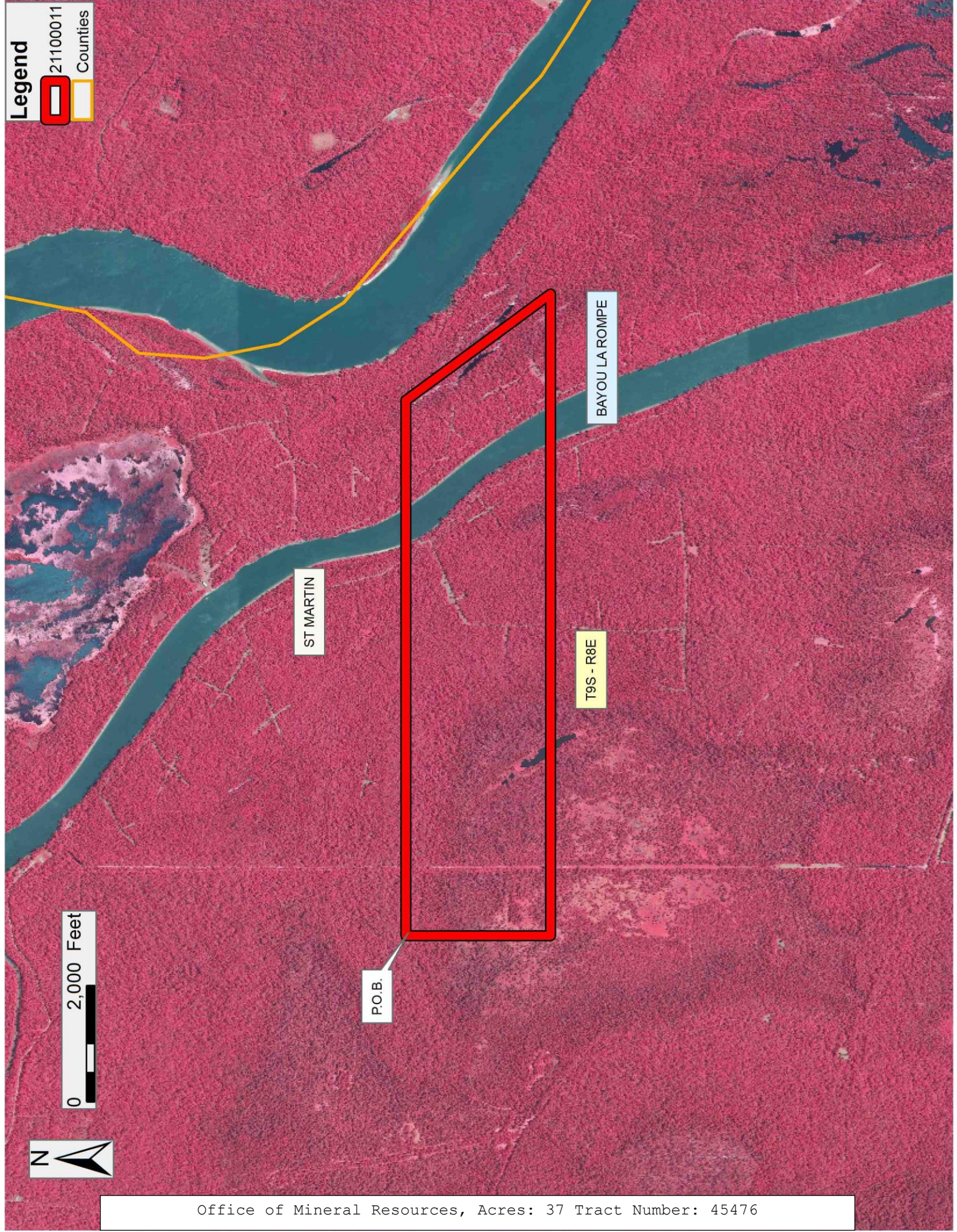


Legend  
21100011  
Counties



0 2,000 Feet

Office of Mineral Resources, Acres: 37 Tract Number: 45476





**TRACT 45477 - St. Martin Parish, Louisiana**

All of the lands now or formerly constituting the beds and bottoms of all water bodies of every nature and description as to which title is vested in the State of Louisiana, together with all islands arising therein and other lands formed by accretion or by reliction, where allowed by law, excepting tax adjudicated lands, and not presently under mineral lease on October 13, 2021, situated in St. Martin Parish, Louisiana, and more particularly described as follows: Beginning at a point having Coordinates of X = 1,908,713.27 and Y = 574,812.57; thence East 11,053.33 feet to a point having Coordinates of X = 1,919,766.60 and Y = 574,812.57; thence South 36 degrees 21 minutes 10 seconds East 3,098.43 feet to a point having Coordinates of X = 1,921,603.22 and Y = 572,317.15; thence West 12,889.95 feet to a point having Coordinates of X = 1,908,713.27 and Y = 572,317.15; thence North 2,495.40 feet to the point of beginning, containing approximately **44 acres**, all as more particularly outlined on a plat on file in the Office of Mineral Resources, Department of Natural Resources. All bearings, distances and coordinates are based on Louisiana Coordinate System of 1927, (North or South Zone), where applicable.

NOTE: The above description of the Tract nominated for lease has been provided and corrected, where required, exclusively by the nomination party. Any mineral lease selected from this Tract and awarded by the Louisiana State Mineral and Energy Board shall be without warranty of any kind, either express, implied, or statutory, including, but not limited to, the implied warranties of merchantability and fitness for a particular purpose. Should the mineral lease awarded by the Louisiana State Mineral and Energy Board be subsequently modified, cancelled or abrogated due to the existence of conflicting leases, operating agreements, private claims or other future obligations or conditions which may affect all or any portion of the leased Tract, it shall not relieve the Lessee of the obligation to pay any bonus due thereon to the Louisiana State Mineral and Energy Board, nor shall the Louisiana State Mineral and Energy Board be obligated to refund any consideration paid by the Lessor prior to such modification, cancellation, or abrogation, including, but not limited to, bonuses, rentals and royalties.

NOTE: This acreage is entirely within the boundary of the Atchafalaya Basin Legal Area.

Applicant: THEOPHILUS OIL, GAS & LAND SERVICES, LLC

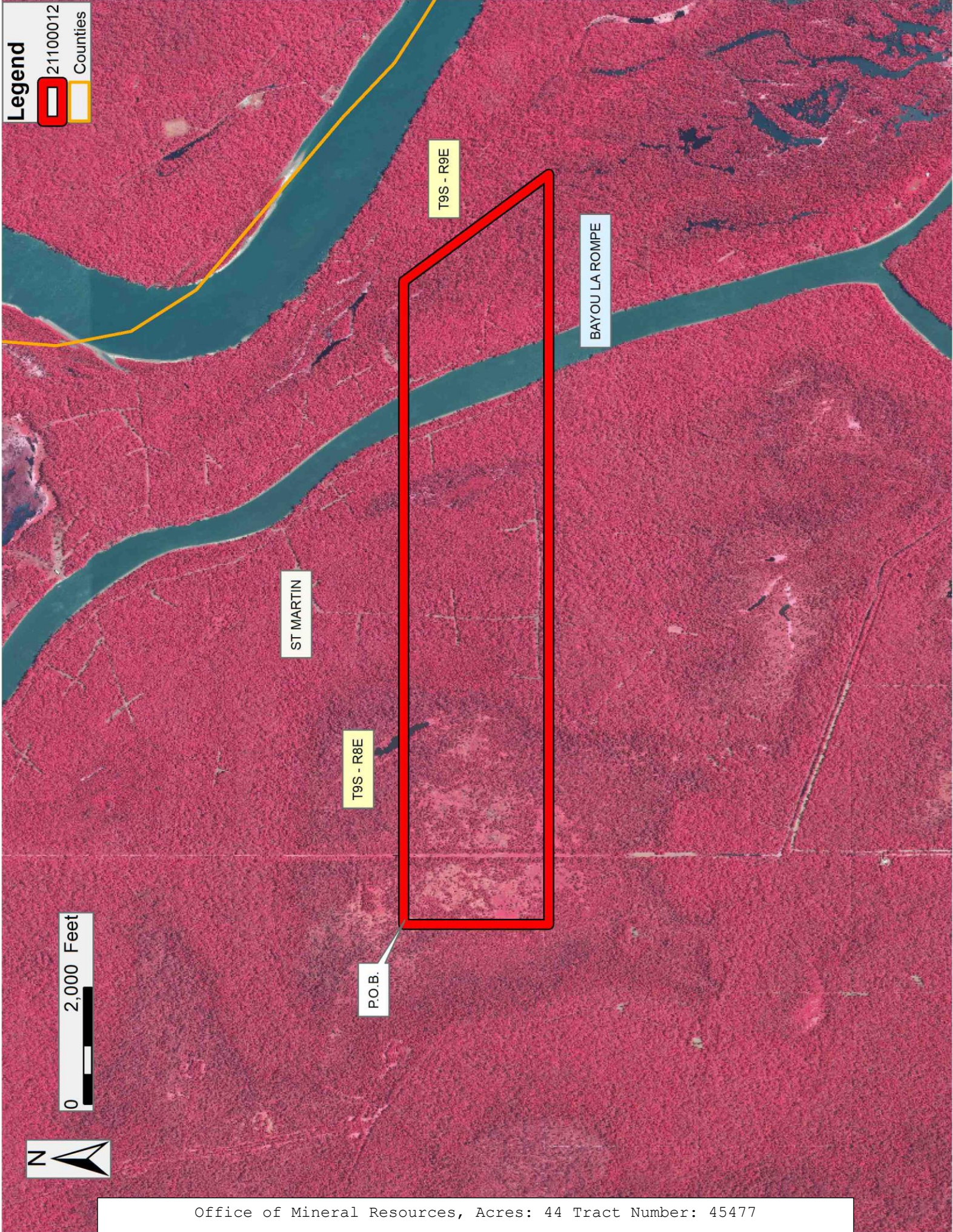
Bidder	Cash Payment	Price/Acre	Rental	Oil	Gas	Other



Legend



0 2,000 Feet





**TRACT 45478 - Jefferson and Plaquemines Parishes, Louisiana**

All of the lands now or formerly constituting the beds and bottoms of all water bodies of every nature and description as to which title is vested in the State of Louisiana, together with all islands arising therein and other lands formed by accretion or by reliction, where allowed by law, excepting tax adjudicated lands, and not presently under mineral lease on October 13, 2021, situated in Jefferson and Plaquemines Parishes, Louisiana, and more particularly described as follows: Beginning at a point having Coordinates of X = 2,431,793.00 and Y = 302,729.00; thence South 2,478.41 feet to a point having Coordinates of X = 2,431,793.00 and Y = 300,250.59; thence West 2,056.92 feet to the Northeast corner of State Lease No. 21345, as amended, having Coordinates of X = 2,429,736.08 and Y = 300,250.59; thence South 89 degrees 06 minutes 56 seconds West 2,659.70 feet along the North line of said State Lease No. 21345, as amended, to the Southeast corner of Operating Agreement No. 331 having Coordinates of X = 2,427,076.70 and Y = 300,209.54; thence North 1,090.76 feet along the East line of said Operating Agreement No. 331 to its Northeast corner, said corner being the Southeast corner of Operating Agreement No. 321 having Coordinates of X = 2,427,076.70 and Y = 301,300.30; thence North 01 degrees 02 minutes 35 seconds West 1,428.94 feet along the East line of said Operating Agreement No. 321 to its Northeast corner having Coordinates of X = 2,427,050.69 and Y = 302,729.00; thence East 4,742.31 feet to the point of beginning, (This lease includes only waterbottoms claimed and owned by the state and specifically excludes any land which the state may claim or own and to which the mineral rights are vested in the state), containing approximately **246 acres**, all as more particularly outlined on a plat on file in the Office of Mineral Resources, Department of Natural Resources. All bearings, distances and coordinates are based on Louisiana Coordinate System of 1927, (North or South Zone), where applicable.

NOTE: The above description of the Tract nominated for lease has been provided and corrected, where required, exclusively by the nomination party. Any mineral lease selected from this Tract and awarded by the Louisiana State Mineral and Energy Board shall be without warranty of any kind, either express, implied, or statutory, including, but not limited to, the implied warranties of merchantability and fitness for a particular purpose. Should the mineral lease awarded by the Louisiana State Mineral and Energy Board be subsequently modified, cancelled or abrogated due to the existence of conflicting leases, operating agreements, private claims or other future obligations or conditions which may affect all or any portion of the leased Tract, it shall not relieve the Lessee of the obligation to pay any bonus due thereon to the Louisiana State Mineral and Energy Board, nor shall the Louisiana State Mineral and Energy Board be obligated to refund any consideration paid by the Lessor prior to such modification, cancellation, or abrogation, including, but not limited to, bonuses, rentals and royalties.

NOTE: The State of Louisiana does hereby reserve, and this lease shall be subject to, the imprescriptible right of surface use in the nature of a servitude in favor of the Department of Natural Resources, including its



Offices and Commissions, for the sole purpose of implementing, constructing, servicing and maintaining approved coastal zone management and/or restoration projects. Utilization of any and all rights derived under this lease by the mineral lessee, its agents, successors or assigns, shall not interfere with nor hinder the reasonable surface use by the Department of Natural Resources, its Offices or Commissions, as herein above reserved.

Applicant: WOLFE PETROLEUM

Bidder	Cash Payment	Price/Acre	Rental	Oil	Gas	Other

**Legend**

- 21100001
- Active\_Leases
- Counties

0 2,500 Feet



PLAQUEMINES

P.O.B.

BAYOU BARATARIA

JEFFERSON

SL 21345

A0321

A0331

**TRACT 45479 - Plaquemines Parish, Louisiana**

All of the lands now or formerly constituting the beds and bottoms of all water bodies of every nature and description as to which title is vested in the State of Louisiana, together with all islands arising therein and other lands formed by accretion or by reliction, where allowed by law, excepting tax adjudicated lands, and not presently under mineral lease on October 13, 2021, situated in Plaquemines Parish, Louisiana, and more particularly described as follows: Beginning at a point having Coordinates of X = 2,431,793.00 and Y = 302,729.00; thence East 2,806.00 feet to a point having Coordinates of X = 2,434,599.00 and Y = 302,729.00; thence South 5,250.88 feet to a point having Coordinates of X = 2,434,599.00 and Y = 297,478.12; thence West 2,806.00 feet to a point having Coordinates of X = 2,431,793.00 and Y = 297,478.12; thence North 5,250.88 feet to the point of beginning, containing approximately **328 acres**, all as more particularly outlined on a plat on file in the Office of Mineral Resources, Department of Natural Resources. All bearings, distances and coordinates are based on Louisiana Coordinate System of 1927, (North or South Zone), where applicable.

NOTE: The above description of the Tract nominated for lease has been provided and corrected, where required, exclusively by the nomination party. Any mineral lease selected from this Tract and awarded by the Louisiana State Mineral and Energy Board shall be without warranty of any kind, either express, implied, or statutory, including, but not limited to, the implied warranties of merchantability and fitness for a particular purpose. Should the mineral lease awarded by the Louisiana State Mineral and Energy Board be subsequently modified, cancelled or abrogated due to the existence of conflicting leases, operating agreements, private claims or other future obligations or conditions which may affect all or any portion of the leased Tract, it shall not relieve the Lessee of the obligation to pay any bonus due thereon to the Louisiana State Mineral and Energy Board, nor shall the Louisiana State Mineral and Energy Board be obligated to refund any consideration paid by the Lessor prior to such modification, cancellation, or abrogation, including, but not limited to, bonuses, rentals and royalties.

NOTE: The State of Louisiana does hereby reserve, and this lease shall be subject to, the imprescriptible right of surface use in the nature of a servitude in favor of the Department of Natural Resources, including its Offices and Commissions, for the sole purpose of implementing, constructing, servicing and maintaining approved coastal zone management and/or restoration projects. Utilization of any and all rights derived under this lease by the mineral lessee, its agents, successors or assigns, shall not interfere with nor hinder the reasonable surface use by the Department of Natural Resources, its Offices or Commissions, as herein above reserved.



Applicant: WOLFE PETROLEUM

Bidder	Cash Payment	Price/ Acre	Rental	Oil	Gas	Other

Legend

- 21100002
- Counties



0 2,000 Feet

PLAQUEMINES

P.O.B.

JEFFERSON



MUD LAKE



**TRACT 45480 - Jefferson Parish, Louisiana**

All of the lands now or formerly constituting the beds and bottoms of all water bodies of every nature and description as to which title is vested in the State of Louisiana, together with all islands arising therein and other lands formed by accretion or by reliction, where allowed by law, excepting tax adjudicated lands, and not presently under mineral lease on October 13, 2021, situated in Jefferson Parish, Louisiana, and more particularly described as follows: Beginning at a point having Coordinates of X = 2,419,900.00 and Y = 296,301.97; thence North 3,827.81 feet to a point having Coordinates of X = 2,419,900.00 and Y = 300,129.78; thence East 2,604.72 feet to the Southwest corner of Operating Agreement No. A0331 having Coordinates of X = 2,422,504.72 and Y = 300,129.78; thence North 89 degrees 00 minutes 02 seconds East 1,952.04 feet along the South line of said Operating Agreement No. A0331 to the most Northerly Northwest corner of State Lease No. 21345, as amended, having Coordinates of X = 2,424,456.46 and Y = 300,163.83; thence along the boundary of said State Lease No. 21345, as amended, the following courses: South 01 degrees 01 minutes 01 seconds East 1,703.10 feet to a point having Coordinates of X = 2,424,486.68 and Y = 298,461.00; East 940.25 feet to a point having Coordinates of X = 2,425,426.93 and Y = 298,461.00, South 2,158.82 feet to a point having Coordinates of X = 2,425,426.93 and Y = 296,302.18, West 2,880.04 feet to a point having Coordinates of X = 2,422,546.89 and Y = 296,302.18, and South 89 degrees 58 minutes 00 seconds West 350.16 feet to a point having Coordinates of X = 2,422,196.73 and Y = 296,301.97; thence West 2,296.73 feet to the point of beginning, (This lease includes only waterbottoms claimed and owned by the state and specifically excludes any land which the state may claim or own and to which the mineral rights are vested in the state), containing approximately **391 acres**, all as more particularly outlined on a plat on file in the Office of Mineral Resources, Department of Natural Resources. All bearings, distances and coordinates are based on Louisiana Coordinate System of 1927, (North or South Zone), where applicable.

NOTE: The above description of the Tract nominated for lease has been provided and corrected, where required, exclusively by the nomination party. Any mineral lease selected from this Tract and awarded by the Louisiana State Mineral and Energy Board shall be without warranty of any kind, either express, implied, or statutory, including, but not limited to, the implied warranties of merchantability and fitness for a particular purpose. Should the mineral lease awarded by the Louisiana State Mineral and Energy Board be subsequently modified, cancelled or abrogated due to the existence of conflicting leases, operating agreements, private claims or other future obligations or conditions which may affect all or any portion of the leased Tract, it shall not relieve the Lessee of the obligation to pay any bonus due thereon to the Louisiana State Mineral and Energy Board, nor shall the Louisiana State Mineral and Energy Board be obligated to refund any consideration paid by the Lessor prior to such modification, cancellation, or abrogation, including, but not limited to, bonuses, rentals and royalties.

NOTE: The State of Louisiana does hereby reserve, and this lease shall be subject to, the imprescriptible right of surface use in the nature of a servitude in favor of the Department of Natural Resources, including its Offices and Commissions, for the sole purpose of implementing, constructing, servicing and maintaining approved coastal zone management and/or restoration projects. Utilization of any and all rights derived under this lease by the mineral lessee, its agents, successors or assigns, shall not interfere with nor hinder the reasonable surface use by the Department of Natural Resources, its Offices or Commissions, as herein above reserved.

Applicant: WOLFE PETROLEUM

Bidder	Cash Payment	Price/Acre	Rental	Oil	Gas	Other



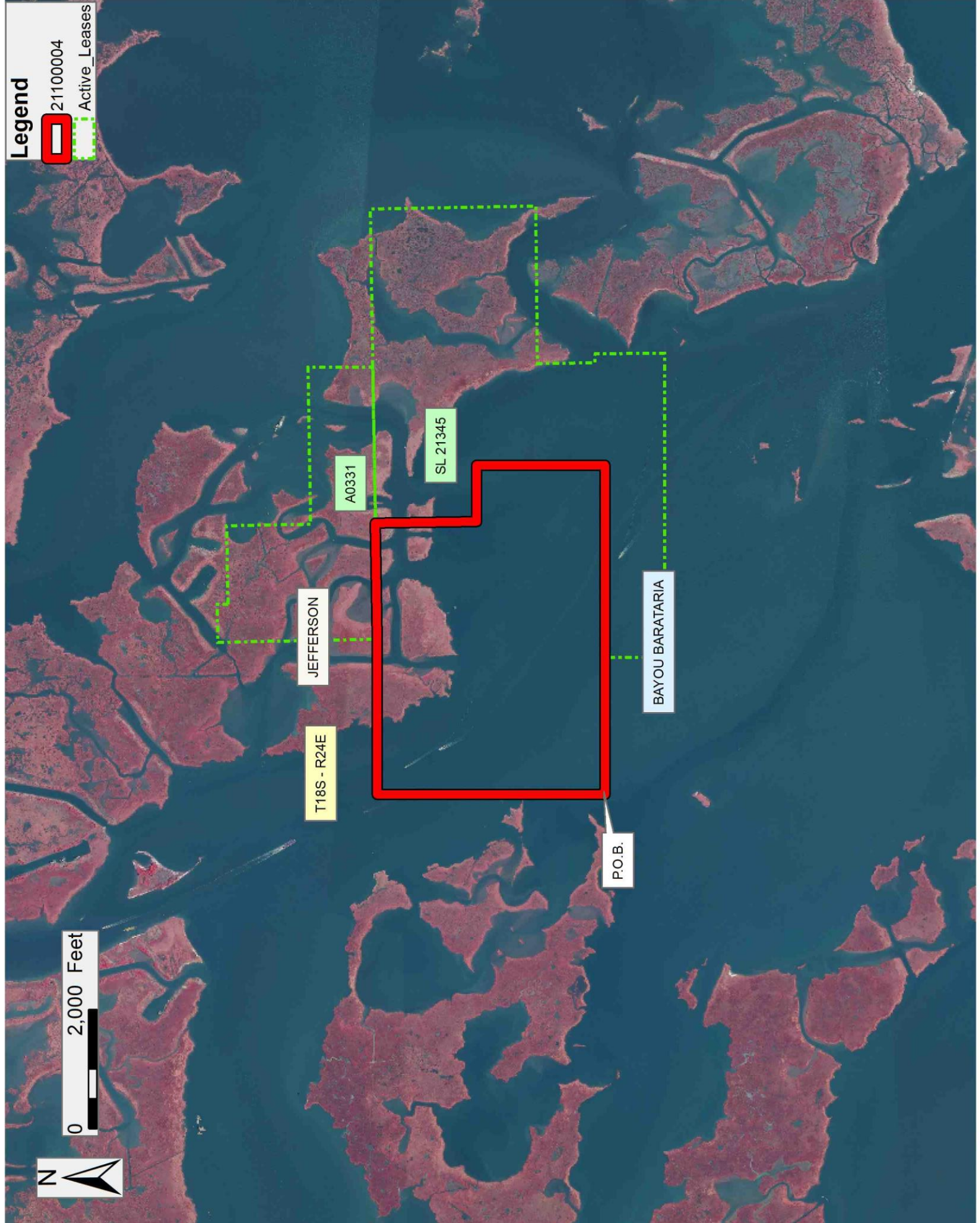
**Legend**

-  21100004
-  Active\_Leases



0 2,000 Feet

Office of Mineral Resources, Acres: 391 Tract Number: 45480



**TRACT 45481 - Jefferson and Plaquemines Parishes, Louisiana**

All of the lands now or formerly constituting the beds and bottoms of all water bodies of every nature and description as to which title is vested in the State of Louisiana, together with all islands arising therein and other lands formed by accretion or by reliction, where allowed by law, excepting tax adjudicated lands, and not presently under mineral lease on October 13, 2021, situated in Jefferson and Plaquemines Parishes, Louisiana, and more particularly described as follows: Beginning at a point having Coordinates of X = 2,431,793.00 and Y = 293,802.15; thence South 89 degrees 58 minutes 51 seconds West 2,969.84 feet to a point having Coordinates of X = 2,428,823.16 and Y = 293,801.15; thence North 88 degrees 40 minutes 50 seconds West 1,206.93 feet to the Northeast corner of State Lease No. 21649, as amended, said point being the Southeast corner of State Lease No. 21651, as amended, having Coordinates of X = 2,427,616.55 and Y = 293,828.94; thence North 3,616.08 feet along the Eastern boundary of said State Lease No. 21651, as amended, to its Northeast corner having Coordinates of X = 2,427,616.55 and Y = 297,445.02; thence North 89 degrees 25 minutes 00 seconds East 2,169.90 feet to a point on the Easternmost Southern boundary of State Lease No. 21345, as amended, having Coordinates of X = 2,429,786.34 and Y = 297,467.11; thence North 01 degrees 02 minutes 04 seconds West 2,783.93 feet along the Eastern border of said State Lease No. 21345, as amended, to its Northeast corner having Coordinates of X = 2,429,736.08 and Y = 300,250.59; thence East 2,056.92 feet to a point having Coordinates of X = 2,431,793.00 and Y = 300,250.59; thence South 6,448.44 feet to the point of beginning, (This lease includes only waterbottoms claimed and owned by the state and specifically excludes any land which the state may claim or own and to which the mineral rights are vested in the state), containing approximately **296 acres**, all as more particularly outlined on a plat on file in the Office of Mineral Resources, Department of Natural Resources. All bearings, distances and coordinates are based on Louisiana Coordinate System of 1927, (North or South Zone), where applicable.

NOTE: The above description of the Tract nominated for lease has been provided and corrected, where required, exclusively by the nomination party. Any mineral lease selected from this Tract and awarded by the Louisiana State Mineral and Energy Board shall be without warranty of any kind, either express, implied, or statutory, including, but not limited to, the implied warranties of merchantability and fitness for a particular purpose. Should the mineral lease awarded by the Louisiana State Mineral and Energy Board be subsequently modified, cancelled or abrogated due to the existence of conflicting leases, operating agreements, private claims or other future obligations or conditions which may affect all or any portion of the leased Tract, it shall not relieve the Lessee of the obligation to pay any bonus due thereon to the Louisiana State Mineral and Energy Board, nor shall the Louisiana State Mineral and Energy Board be obligated to refund any consideration paid by the Lessor prior to such modification, cancellation, or abrogation, including, but not limited to, bonuses, rentals and royalties.



NOTE: The State of Louisiana does hereby reserve, and this lease shall be subject to, the imprescriptible right of surface use in the nature of a servitude in favor of the Department of Natural Resources, including its Offices and Commissions, for the sole purpose of implementing, constructing, servicing and maintaining approved coastal zone management and/or restoration projects. Utilization of any and all rights derived under this lease by the mineral lessee, its agents, successors or assigns, shall not interfere with nor hinder the reasonable surface use by the Department of Natural Resources, its Offices or Commissions, as herein above reserved.

Applicant: WOLFE PETROLEUM

Bidder	Cash Payment	Price/Acre	Rental	Oil	Gas	Other

**Legend**

- 211100003
- Active\_Leases
- Counties

PLAQUEMINES

JEFFERSON

P.O.B.

SL 21345

SL 21651

BAYOU BARATARIA

SL 21649

0 2,000 Feet





**TRACT 45482 - Jefferson Parish, Louisiana**

All of the lands now or formerly constituting the beds and bottoms of all water bodies of every nature and description as to which title is vested in the State of Louisiana, together with all islands arising therein and other lands formed by accretion or by reliction, where allowed by law, excepting tax adjudicated lands, and not presently under mineral lease on October 13, 2021, situated in Jefferson Parish, Louisiana, and more particularly described as follows: Beginning at a point having Coordinates of X = 2,417,700.00 and Y = 291,992.44; thence North 4,309.53 feet to a point having Coordinates of X = 2,417,700.00 and Y = 296,301.97; thence East 4,496.73 feet to the most Westerly Northwest corner of State Lease No. 21345, as amended, having Coordinates of X = 2,422,196.73 and Y = 296,301.97; thence South 1,001.97 feet along the Western boundary of said State Lease No. 21345, as amended, to its Southwest corner, said corner being the Northwest corner of State Lease No. 21346, as amended, having Coordinates of X = 2,422,196.73 and Y = 295,300.00; thence South 1,464.10 feet along the Western boundary of said State Lease No. 21346, as amended, to its Southwest corner, said corner being the Northwest corner of State Lease No. 21649, as amended, having Coordinates of X = 2,422,196.73 and Y = 293,835.90; thence South 1,843.46 feet along the Western boundary of said State Lease No. 21649, as amended, to its Southwest corner having Coordinates of X = 2,422,196.73 and Y = 291,992.44; thence West 4,496.73 feet to the point of beginning, containing approximately **440 acres**, all as more particularly outlined on a plat on file in the Office of Mineral Resources, Department of Natural Resources. All bearings, distances and coordinates are based on Louisiana Coordinate System of 1927, (North or South Zone), where applicable.

NOTE: The above description of the Tract nominated for lease has been provided and corrected, where required, exclusively by the nomination party. Any mineral lease selected from this Tract and awarded by the Louisiana State Mineral and Energy Board shall be without warranty of any kind, either express, implied, or statutory, including, but not limited to, the implied warranties of merchantability and fitness for a particular purpose. Should the mineral lease awarded by the Louisiana State Mineral and Energy Board be subsequently modified, cancelled or abrogated due to the existence of conflicting leases, operating agreements, private claims or other future obligations or conditions which may affect all or any portion of the leased Tract, it shall not relieve the Lessee of the obligation to pay any bonus due thereon to the Louisiana State Mineral and Energy Board, nor shall the Louisiana State Mineral and Energy Board be obligated to refund any consideration paid by the Lessor prior to such modification, cancellation, or abrogation, including, but not limited to, bonuses, rentals and royalties.

NOTE: The State of Louisiana does hereby reserve, and this lease shall be subject to, the imprescriptible right of surface use in the nature of a servitude in favor of the Department of Natural Resources, including its Offices and Commissions, for the sole purpose of implementing, constructing, servicing and maintaining approved coastal zone management and/or restoration projects. Utilization of any and all rights derived under this

lease by the mineral lessee, its agents, successors or assigns, shall not interfere with nor hinder the reasonable surface use by the Department of Natural Resources, its Offices or Commissions, as herein above reserved.

Applicant: WOLFE PETROLEUM

Bidder	Cash Payment	Price/Acre	Rental	Oil	Gas	Other



**Legend**

- 21100005
- Active\_Leases

