

TRACT 45490 - Red River Parish, Louisiana

All of the lands now or formerly constituting the beds and bottoms of all water bodies of every nature and description as to which title is vested in the State of Louisiana, together with all islands arising therein and other lands formed by accretion or by reliction, where allowed by law, excepting tax adjudicated lands, and not presently under mineral lease on December 8, 2021, situated in Red River Parish, Louisiana, and more particularly described as follows: Beginning at the Northeast corner of State Lease No. 20702 and a point on the most southern boundary of State Lease No. 20114, as amended having Coordinates of X = 1,729,600.00 and Y = 477,365.00; thence East 52 feet along the southern boundary of said State Lease to its most southern Southeast corner having Coordinates of X = 1,729,652.00 and Y = 477,365.00; thence continue East 10,516.18 feet to a point having Coordinates of X = 1,740,168.18 and Y = 477,365.00; thence South 5,587.32 feet to a point having Coordinates of X = 1,740,168.18 and Y = 471,777.68; thence North 88 degrees 10 minutes 32 seconds West 5,433.44 feet to the Northeast corner of Area A State Lease No. 19839, as amended, having Coordinates of X = 1,734,737.50 and Y = 471,950.68; thence North 88 degrees 45 minutes 19 seconds West 5,138.70 feet along the northern boundary of said State Lease No. 19839 to a point, also a point on the eastern boundary of said State Lease No. 20702 having Coordinates of X = 1,729,600.00 and Y = 472,061.72; thence North 5,303.28 feet along east boundary of said State Lease No. 20702 to the point of beginning, containing approximately **130 acres**, all as more particularly outlined on a plat on file in the Office of Mineral Resources, Department of Natural Resources. All bearings, distances and coordinates are based on Louisiana Coordinate System of 1927, (North or South Zone), where applicable.

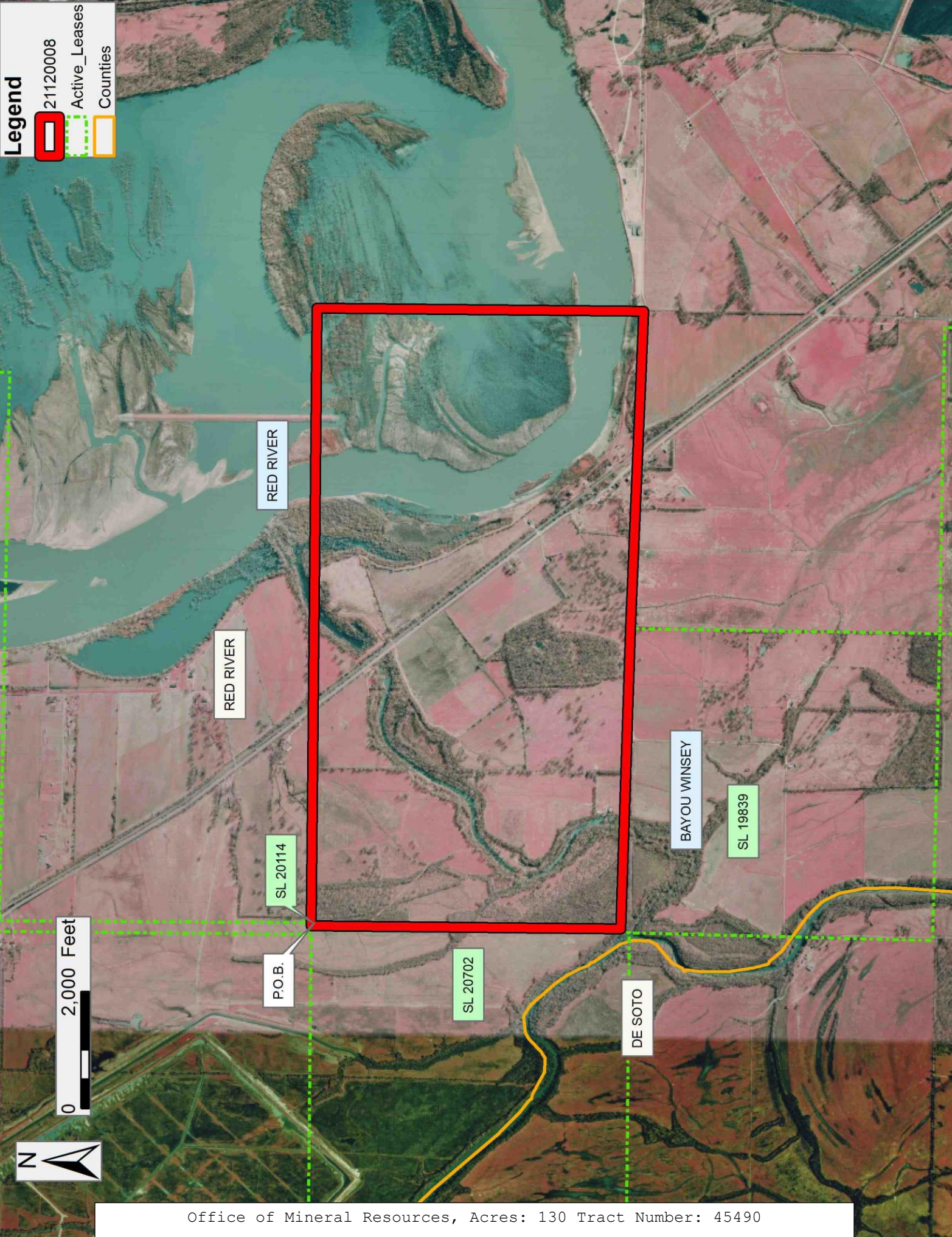
NOTE: The above description of the Tract nominated for lease has been provided and corrected, where required, exclusively by the nomination party. Any mineral lease selected from this Tract and awarded by the Louisiana State Mineral and Energy Board shall be without warranty of any kind, either express, implied, or statutory, including, but not limited to, the implied warranties of merchantability and fitness for a particular purpose. Should the mineral lease awarded by the Louisiana State Mineral and Energy Board be subsequently modified, cancelled or abrogated due to the existence of conflicting leases, operating agreements, private claims or other future obligations or conditions which may affect all or any portion of the leased Tract, it shall not relieve the Lessee of the obligation to pay any bonus due thereon to the Louisiana State Mineral and Energy Board, nor shall the Louisiana State Mineral and Energy Board be obligated to refund any consideration paid by the Lessor prior to such modification, cancellation, or abrogation, including, but not limited to, bonuses, rentals and royalties.

Applicant: CYPRESS ENERGY CORPORATION

Bidder	Cash Payment	Price/Acre	Rental	Oil	Gas	Other

Legend

- 21120008
- Active_Leases
- Counties



Office of Mineral Resources, Acres: 130 Tract Number: 45490

TRACT 45491 - Plaquemines Parish, Louisiana

All of the lands now or formerly constituting the beds and bottoms of all water bodies of every nature and description as to which title is vested in the State of Louisiana, together with all islands arising therein and other lands formed by accretion or by reliction, where allowed by law, excepting tax adjudicated lands, and not presently under mineral lease on December 8, 2021, situated in Plaquemines Parish, Louisiana, and more particularly described as follows: Beginning at a point having Coordinates of X = 2,459,500.00 and Y = 294,595.59; thence East 12,250.00 feet to the Northwest corner of State Lease No. 12499, as amended, having Coordinates of X = 2,471,750.00 and Y = 294,595.59; thence South 1,748.66 feet along the West line of said State Lease No. 12499, as amended, to its Southwest corner, said corner being the Northwest corner of State Lease No. 12036, as amended, having Coordinates of X = 2,471,750.00 and Y = 292,846.93; thence along the boundary of said State Lease No. 12036, as amended, the following courses: South 51 degrees 10 minutes 49 seconds West 2,867.50 feet to a point having Coordinates of X = 2,469,515.87 and Y = 291,049.37; and South 55 degrees 21 minutes 12 seconds East 7,274.00 feet to its Southeast corner having Coordinates of X = 2,475,500.00 and Y = 286,914.00; thence South 240.74 feet to a point having Coordinates of X = 2,475,500.00 and Y = 286,673.25; thence South 40 degrees 14 minutes 19 seconds West 1,350.24 feet to the Northeast corner of State Lease No. 21764, as amended, having Coordinates of X = 2,474,627.79 and Y = 285,642.53; thence along the boundary of said State Lease No. 21764, as amended, the following courses: South 76 degrees 49 minutes 39 seconds West 499.92 feet to a point having Coordinates of X = 2,474,141.02 and Y = 285,528.60; 392.80 feet along the arc of a curve to the right having a radius of 2,220.00 feet and a chord bearing and distance of South 79 degrees 11 minutes 57 seconds West 392.29 feet to a point having Coordinates of X = 2,473,755.68 and Y = 285,455.09; 372.00 feet along the arc of a curve to the right having a radius of 14,920.00 feet and a chord bearing and distance of South 86 degrees 07 minutes 07 seconds West 371.99 feet to a point having Coordinates of X = 2,473,384.55 and Y = 285,429.91; and South 86 degrees 44 minutes 43 seconds West 395.31 feet to its Northwest corner, said corner being on the Eastern boundary of State Lease No. 17378, as amended, having Coordinates of X = 2,472,989.87 and Y = 285,407.47; thence along the boundary of said State Lease No. 17378, as amended, the following courses: North 67 degrees 57 minutes 57 seconds West 778.83 feet to a point having Coordinates of X = 2,472,267.93 and Y = 285,699.65 and West 3,867.93 feet to its Northwest corner, said corner being the Northeast corner of State Lease No. 17376, as amended, having Coordinates of X = 2,468,400.00 and Y = 285,699.65; thence West 3,027.84 feet along the North line of said State Lease No. 17376, as amended, to its Northwest corner having Coordinates of X = 2,465,372.16 and Y = 285,699.65; thence West 5,872.16 feet to a point having Coordinates of X = 2,459,500.00 and Y = 285,699.65; thence North 8,895.94 feet to the point of beginning, containing approximately **2,112 acres**, all as more particularly outlined on a plat on file in the Office of Mineral Resources, Department of Natural Resources. All bearings, distances and coordinates are based on Louisiana Coordinate System of 1927, (North or South Zone), where applicable.

NOTE: The above description of the Tract nominated for lease has been provided and corrected, where required, exclusively by the nomination party. Any mineral lease selected from this Tract and awarded by the Louisiana State Mineral and Energy Board shall be without warranty of any kind, either express, implied, or statutory, including, but not limited to, the implied warranties of merchantability and fitness for a particular purpose. Should the mineral lease awarded by the Louisiana State Mineral and Energy Board be subsequently modified, cancelled or abrogated due to the existence of conflicting leases, operating agreements, private claims or other future obligations or conditions which may affect all or any portion of the leased Tract, it shall not relieve the Lessee of the obligation to pay any bonus due thereon to the Louisiana State Mineral and Energy Board, nor shall the Louisiana State Mineral and Energy Board be obligated to refund any consideration paid by the Lessor prior to such modification, cancellation, or abrogation, including, but not limited to, bonuses, rentals and royalties.

NOTE: The State of Louisiana does hereby reserve, and this lease shall be subject to, the imprescriptible right of surface use in the nature of a servitude in favor of the Department of Natural Resources, including its Offices and Commissions, for the sole purpose of implementing, constructing, servicing and maintaining approved coastal zone management and/or restoration projects. Utilization of any and all rights derived under this lease by the mineral lessee, its agents, successors or assigns, shall not interfere with nor hinder the reasonable surface use by the Department of Natural Resources, its Offices or Commissions, as herein above reserved.

Applicant: TARPON OIL & GAS

Bidder	Cash Payment	Price/Acre	Rental	Oil	Gas	Other

Legend



21120001

Active_Leases

0 3,000 Feet



PLAQUEMINES

P.O.B.

SL 12499

SL 12036

SL 17376

BAY BATISTE

BARATARIA BAY

SL 17378

SL 21764

TRACT 45492 - Plaquemines Parish, Louisiana

All of the lands now or formerly constituting the beds and bottoms of all water bodies of every nature and description as to which title is vested in the State of Louisiana, together with all islands arising therein and other lands formed by accretion or by reliction, where allowed by law, excepting tax adjudicated lands, and not presently under mineral lease on December 8, 2021, situated in Plaquemines Parish, Louisiana, and more particularly described as follows: Beginning at a point having Coordinates of X = 2,464,400.00 and Y = 285,699.65; thence East 972.16 feet to the Northwest corner of State Lease No. 17376, as amended, having Coordinates of X = 2,465,372.16 and Y = 285,699.65; thence along the boundary of said State Lease No. 17376, as amended, the following courses: South 3,755.10 feet to a point having Coordinates of X = 2,465,372.16 and Y = 281,944.55 and South 89 degrees 45 minutes 25 seconds East 3,027.86 feet to its Southeast corner, said corner being the Southwest corner of State Lease No. 17378, as amended, having Coordinates of X = 2,468,400.00 and Y = 281,931.71; thence along the boundary of said State Lease No. 17378, as amended, the following courses: South 89 degrees 45 minutes 25 seconds East 5,147.49 feet to a point having Coordinates of X = 2,473,547.44 and Y = 281,909.88 and North 701.22 feet to the Southwest corner of State Lease No. 21764, as amended, having Coordinates of X = 2,473,547.44 and Y = 282,611.10; thence along the boundary of said State Lease No. 21764, as amended, the following courses: 125.39 feet along the arc of a curve to the right having a radius of 18,370.00 feet and a chord bearing and distance of North 78 degrees 17 minutes 28 seconds East 125.39 feet to a point having Coordinates of X = 2,473,670.21 and Y = 282,636.55; North 77 degrees 29 minutes 06 seconds East 295.64 feet to a point having Coordinates of X = 2,473,958.83 and Y = 282,700.61; 312.44 feet along the arc of a curve to the right having a radius of 15,830.00 feet and a chord bearing and distance of North 77 degrees 03 minutes 02 seconds East 312.44 feet to a point having Coordinates of X = 2,474,263.33 and Y = 282,770.62; 79.73 feet along the arc of a curve to the left having a radius of 1,850.00 feet and a chord bearing and distance of North 76 degrees 38 minutes 41 seconds East 79.73 feet to a point having Coordinates of X = 2,474,340.90 and Y = 282,789.04; 137.16 feet along the arc of a curve to the left having a radius of 3,620.00 feet and a chord bearing and distance of North 74 degrees 19 minutes 29 seconds East 137.15 feet to a point having Coordinates of X = 2,474,472.95 and Y = 282,826.10; North 73 degrees 14 minutes 21 seconds East 278.00 feet to a point having Coordinates of X = 2,474,739.14 and Y = 282,906.26; 46.48 feet along the arc of a curve to the right having a radius of 1,270.00 feet and a chord bearing and distance of North 74 degrees 17 minutes 15 seconds East 46.48 feet to a point having Coordinates of X = 2,474,783.87 and Y = 282,918.85; 324.09 feet along the arc of a curve to the right having a radius of 8,590.00 feet and a chord bearing and distance of North 76 degrees 25 minutes 01 seconds East 324.07 feet to a point having Coordinates of X = 2,475,098.88 and Y = 282,994.96; 111.22 feet along the arc of a curve to the left having a radius of 3,675.00 feet and a chord bearing and distance of North 76 degrees 37 minutes 51 seconds East 111.22 feet to a point having Coordinates of X = 2,475,207.08 and Y = 283,020.68; 201.19 feet along the arc of a curve to the left having a radius of 6,590.00

feet and a chord bearing and distance of North 74 degrees 53 minutes 21 seconds East 201.19 feet to a point having Coordinates of X = 2,475,401.31 and Y = 283,073.12; North 74 degrees 00 minutes 52 seconds East 237.34 feet to a point having Coordinates of X = 2,475,629.48 and Y = 283,138.49; 14.45 feet along the arc of a curve to the right having a radius of 350.00 feet and a chord bearing and distance of North 75 degrees 11 minutes 49 seconds East 14.45 feet to a point having Coordinates of X = 2,475,643.44 and Y = 283,142.18; 7.83 feet along the arc of a curve to the left having a radius of 100.00 feet and a chord bearing and distance of North 74 degrees 08 minutes 15 seconds East 7.83 feet to a point having Coordinates of X = 2,475,650.97 and Y = 283,144.32; North 68 degrees 40 minutes 31 seconds East 14.22 feet to a point having Coordinates of X = 2,475,664.22 and Y = 283,149.49; North 60 degrees 42 minutes 20 East 111.94 feet to a point having Coordinates of X = 2,475,761.84 and Y = 283,204.26; North 54 degrees 58 minutes 55 seconds East 47.50 feet to a point having Coordinates of X = 2,475,800.74 and Y = 283,231.51; North 47 degrees 49 minutes 41 seconds East 84.99 feet to a point having Coordinates of X = 2,475,863.73 and Y = 283,288.58; 469.29 feet along the arc of a curve to the left having a radius of 19,770.00 feet and a chord bearing and distance of North 17 degrees 06 minutes 00 seconds West 469.28 feet to a point having Coordinates of X = 2,475,725.75 and Y = 283,737.11; 229.93 feet along the arc of a curve to the left having a radius of 8,770.00 feet and a chord bearing and distance of North 18 degrees 31 minutes 52 seconds West 229.92 feet to a point having Coordinates of X = 2,475,652.67 and Y = 283,955.11; 338.92 feet along the arc of a curve to the left having a radius of 5,480.00 feet and a chord bearing and distance of North 21 degrees 03 minutes 14 seconds West 338.87 feet to a point having Coordinates of X = 2,475,530.94 and Y = 284,271.36; 236.26 feet along the arc of a curve to the left having a radius of 4,330.00 feet and a chord bearing and distance of North 24 degrees 23 minutes 20 seconds West 236.23 feet to a point having Coordinates of X = 2,475,433.39 and Y = 284,486.51; 232.74 feet along the arc of a curve to the left having a radius of 6,610.00 feet and a chord bearing and distance of North 26 degrees 57 minutes 39 seconds West 232.72 feet to a point having Coordinates of X = 2,475,327.88 and Y = 284,693.94; 331.15 feet along the arc of a curve to the left having a radius of 6,925.00 feet and a chord bearing and distance of North 29 degrees 20 minutes 22 seconds West 331.12 feet to a point having Coordinates of X = 2,475,165.63 and Y = 284,982.59; 187.43 feet along the arc of a curve to the left having a radius of 1,910.00 feet and a chord bearing and distance of North 33 degrees 31 minutes 14 seconds West 187.36 feet to a point having Coordinates of X = 2,475,062.17 and Y = 285,138.79; 168.88 feet along the arc of a curve to the left having a radius of 4,090.00 feet and a chord bearing and distance of North 37 degrees 30 minutes 53 seconds West 168.87 feet to a point having Coordinates of X = 2,474,959.33 and Y = 285,272.73; 137.76 feet along the arc of a curve to the left having a radius of 2,800.00 feet and a chord bearing and distance of North 40 degrees 06 minutes 25 seconds West 137.74 feet to a point having Coordinates of X = 2,474,870.60 and Y = 285,378.08; and 359.04 feet along an arc of a curve to the left having a radius of 9,860.00 feet and a chord bearing and distance of North 42 degrees 33 minutes 35 seconds West 359.02 feet to its

Northeast corner having Coordinates of X = 2,474,627.77 and Y = 285,642.53; thence North 40 degrees 14 minutes 19 seconds East 1,350.24 feet to a point having Coordinates of X = 2,475,500.00 and Y = 286,673.25; thence East 2,200.00 feet to a point having Coordinates of X = 2,477,700.00 and Y = 286,673.25; thence South approximately 7,650 feet to a point on the boundary of State Lease No. 2028, as amended; thence along the boundary of said State Lease No. 2028, as amended, the following courses: Westerly approximately 348 feet; Southerly approximately 3,990 feet; Westerly approximately 4,580 feet; and Southerly approximately 532 feet to the Northeast corner of State Lease No. 20984, as amended, having Coordinates of X = 2,472,823.55 and Y = 274,337.16; thence South 89 degrees 15 minutes 14 seconds West 2,303.41 feet along the Northern boundary of said State Lease No. 20984, as amended, to its Northwest corner having Coordinates of X = 2,470,520.33 and Y = 274,307.17; thence West 6,120.33 feet to a point having Coordinates of X = 2,464,400.00 and Y = 274,307.17; thence North 11,392.48 feet to the point of beginning, **LESS AND EXCEPT** any right, title, and interest in lands owned by and not under lease from the State of Louisiana, on behalf of the Plaquemines Parish School Board, situated in Section 16, Township 19 South, Range 26 East, Plaquemines Parish, Louisiana, contained within the above described tract, containing approximately **2,411 acres**, all as more particularly outlined on a plat on file in the Office of Mineral Resources, Department of Natural Resources. All bearings, distances and coordinates are based on Louisiana Coordinate System of 1927, (North or South Zone), where applicable.

NOTE: The above description of the Tract nominated for lease has been provided and corrected, where required, exclusively by the nomination party. Any mineral lease selected from this Tract and awarded by the Louisiana State Mineral and Energy Board shall be without warranty of any kind, either express, implied, or statutory, including, but not limited to, the implied warranties of merchantability and fitness for a particular purpose. Should the mineral lease awarded by the Louisiana State Mineral and Energy Board be subsequently modified, cancelled or abrogated due to the existence of conflicting leases, operating agreements, private claims or other future obligations or conditions which may affect all or any portion of the leased Tract, it shall not relieve the Lessee of the obligation to pay any bonus due thereon to the Louisiana State Mineral and Energy Board, nor shall the Louisiana State Mineral and Energy Board be obligated to refund any consideration paid by the Lessor prior to such modification, cancellation, or abrogation, including, but not limited to, bonuses, rentals and royalties.

NOTE: The State of Louisiana does hereby reserve, and this lease shall be subject to, the imprescriptible right of surface use in the nature of a servitude in favor of the Department of Natural Resources, including its Offices and Commissions, for the sole purpose of implementing, constructing, servicing and maintaining approved coastal zone management and/or restoration projects. Utilization of any and all rights derived under this lease by the mineral lessee, its agents, successors or assigns, shall not interfere with nor hinder the reasonable surface use by the Department of Natural Resources, its Offices or Commissions, as herein above reserved.

Applicant: TARPON OIL & GAS

Bidder	Cash Payment	Price/Acre	Rental	Oil	Gas	Other

Legend

- 21120002
- Active_Leases
- Counties



0 3,000 Feet

P.O.B.

PLAQUEMINES

BAY BATTISTE

SL 17376

SL 17378

SL 21764

SL 2028

SL 20984

BARATARIA BAY

TRACT 45493 - Plaquemines Parish, Louisiana

All of the lands now or formerly constituting the beds and bottoms of all water bodies of every nature and description as to which title is vested in the State of Louisiana, together with all islands arising therein and other lands formed by accretion or by reliction, where allowed by law, excepting tax adjudicated lands, and not presently under mineral lease on December 8, 2021, situated in Plaquemines Parish, Louisiana, and more particularly described as follows: Beginning at a point having Coordinates of X = 2,453,800.00 and Y = 285,699.65; thence South 10,499.65 feet to a point having Coordinates of X = 2,453,800.00 and Y = 275,200.00; thence West 10,500.00 feet to a point having Coordinates of X = 2,443,300.00 and Y = 275,200.00; thence North 10,499.65 feet to a point having Coordinates of X = 2,443,300.00 and Y = 285,699.65; thence East 10,500.00 feet to the point of beginning, **LESS AND EXCEPT** any right, title, and interest in lands owned by and not under lease from the State of Louisiana, on behalf of the Plaquemines Parish School Board, situated in Section 16, Township 19 South, Range 25 East, Plaquemines Parish, Louisiana, contained within the above described tract, containing approximately **2,496 acres**, all as more particularly outlined on a plat on file in the Office of Mineral Resources, Department of Natural Resources. All bearings, distances and coordinates are based on Louisiana Coordinate System of 1927, (North or South Zone), where applicable.

NOTE: The above description of the Tract nominated for lease has been provided and corrected, where required, exclusively by the nomination party. Any mineral lease selected from this Tract and awarded by the Louisiana State Mineral and Energy Board shall be without warranty of any kind, either express, implied, or statutory, including, but not limited to, the implied warranties of merchantability and fitness for a particular purpose. Should the mineral lease awarded by the Louisiana State Mineral and Energy Board be subsequently modified, cancelled or abrogated due to the existence of conflicting leases, operating agreements, private claims or other future obligations or conditions which may affect all or any portion of the leased Tract, it shall not relieve the Lessee of the obligation to pay any bonus due thereon to the Louisiana State Mineral and Energy Board, nor shall the Louisiana State Mineral and Energy Board be obligated to refund any consideration paid by the Lessor prior to such modification, cancellation, or abrogation, including, but not limited to, bonuses, rentals and royalties.

NOTE: The State of Louisiana does hereby reserve, and this lease shall be subject to, the imprescriptible right of surface use in the nature of a servitude in favor of the Department of Natural Resources, including its Offices and Commissions, for the sole purpose of implementing, constructing, servicing and maintaining approved coastal zone management and/or restoration projects. Utilization of any and all rights derived under this lease by the mineral lessee, its agents, successors or assigns, shall not interfere with nor hinder the reasonable surface use by the Department of Natural Resources, its Offices or Commissions, as herein above reserved.

Applicant: TARPON OIL & GAS

Bidder	Cash Payment	Price/Acre	Rental	Oil	Gas	Other

Legend



21120004

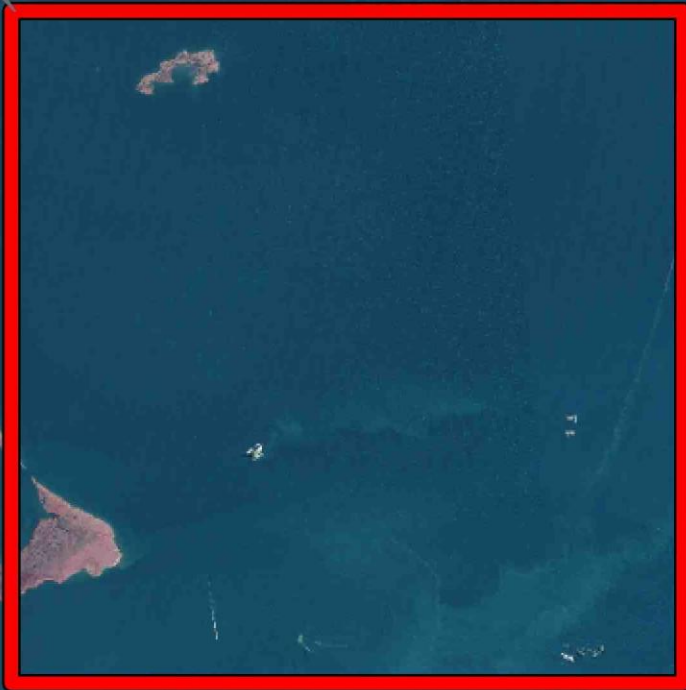
0 2,500 Feet



PLAQUEMINES

P.O.B.

BARATARIA BAY



TRACT 45494 - Plaquemines Parish, Louisiana

All of the lands now or formerly constituting the beds and bottoms of all water bodies of every nature and description as to which title is vested in the State of Louisiana, together with all islands arising therein and other lands formed by accretion or by reliction, where allowed by law, excepting tax adjudicated lands, and not presently under mineral lease on December 8, 2021, situated in Plaquemines Parish, Louisiana, and more particularly described as follows: Beginning at a point having Coordinates of X = 2,453,800.00 and Y = 285,699.65; thence East 10,600.00 feet to a point having Coordinates of X = 2,464,400.00 and Y = 285,699.65; thence South 10,499.65 feet to a point having Coordinates of X = 2,464,400.00 and Y = 275,200.00; thence West 10,600.00 feet to a point having Coordinates of X = 2,453,800.00 and Y = 275,200.00; thence North 10,499.65 feet to the point of beginning, containing approximately **2,286 acres**, all as more particularly outlined on a plat on file in the Office of Mineral Resources, Department of Natural Resources. All bearings, distances and coordinates are based on Louisiana Coordinate System of 1927, (North or South Zone), where applicable.

NOTE: The above description of the Tract nominated for lease has been provided and corrected, where required, exclusively by the nomination party. Any mineral lease selected from this Tract and awarded by the Louisiana State Mineral and Energy Board shall be without warranty of any kind, either express, implied, or statutory, including, but not limited to, the implied warranties of merchantability and fitness for a particular purpose. Should the mineral lease awarded by the Louisiana State Mineral and Energy Board be subsequently modified, cancelled or abrogated due to the existence of conflicting leases, operating agreements, private claims or other future obligations or conditions which may affect all or any portion of the leased Tract, it shall not relieve the Lessee of the obligation to pay any bonus due thereon to the Louisiana State Mineral and Energy Board, nor shall the Louisiana State Mineral and Energy Board be obligated to refund any consideration paid by the Lessor prior to such modification, cancellation, or abrogation, including, but not limited to, bonuses, rentals and royalties.

NOTE: The State of Louisiana does hereby reserve, and this lease shall be subject to, the imprescriptible right of surface use in the nature of a servitude in favor of the Department of Natural Resources, including its Offices and Commissions, for the sole purpose of implementing, constructing, servicing and maintaining approved coastal zone management and/or restoration projects. Utilization of any and all rights derived under this lease by the mineral lessee, its agents, successors or assigns, shall not interfere with nor hinder the reasonable surface use by the Department of Natural Resources, its Offices or Commissions, as herein above reserved.

Applicant: TARPON OIL & GAS

Bidder	Cash Payment	Price/Acre	Rental	Oil	Gas	Other

Legend



21120003

PLAQUEMINES

BARATARIA BAY

P.O.B.

0 2,500 Feet



TRACT 45495 - Plaquemines Parish, Louisiana

All of the lands now or formerly constituting the beds and bottoms of all water bodies of every nature and description as to which title is vested in the State of Louisiana, together with all islands arising therein and other lands formed by accretion or by reliction, where allowed by law, excepting tax adjudicated lands, and not presently under mineral lease on December 8, 2021, situated in Plaquemines Parish, Louisiana, and more particularly described as follows: Beginning at a point within State Lease No. 2104 having Coordinates of X = 2,484,119.99 and Y = 268,349.13; thence Westerly approximately 4,010 feet to a point on the Western boundary of said State Lease No. 2104, also being the Southernmost Southeast corner of State Lease No. 2028, as amended; thence Westerly approximately 4,348 feet along the Southern boundary of said State Lease No. 2028 to a point having Coordinates of X = 2,475,769.50 and Y = 268,239.84; thence South 89 degrees 15 minutes 00 seconds West 945.88 feet to a point having Coordinates of X 2,474,823.70 and Y = 268,227.46; thence South 89 degrees 15 minutes 00 seconds West 1920.01 feet along the Southern boundary of said State Lease No. 2028 to its Southwest corner having Coordinates of X = 2,472,903.86 and Y = 268,202.32; thence Northerly approximately 3,075 feet to the Southeast corner of State Lease No. 20984 having Coordinates of X = 2,472,863.61 and Y = 271,276.71; thence Northerly approximately 820 feet along the Eastern boundary of said State Lease No. 20984, also being the Western boundary of said State Lease No. 2028 to a point; thence Easterly approximately 7,216 feet to a point being at an internal Southeast corner of said State Lease No. 2028, also being a Northwest corner of said State Lease No. 2104; thence Easterly approximately 4,061 feet along the boundary of said State Lease No. 2028, and said State Lease No. 2104 to a point having a Coordinate of X = 2,484,119.99; thence South approximately 3,895 feet to the point of beginning, **LESS AND EXCEPT** in its entirety, State Lease No. 20459, and **LESS AND EXCEPT** any portion of the above described tract that may lie within State Lease No. 2104, State Lease No. 2028 and State Lease No. 212, as amended, containing approximately **45 acres**, all as more particularly outlined on a plat on file in the Office of Mineral Resources, Department of Natural Resources. All bearings, distances and coordinates are based on Louisiana Coordinate System of 1927, (North or South Zone), where applicable.

NOTE: The above description of the Tract nominated for lease has been provided and corrected, where required, exclusively by the nomination party. Any mineral lease selected from this Tract and awarded by the Louisiana State Mineral and Energy Board shall be without warranty of any kind, either express, implied, or statutory, including, but not limited to, the implied warranties of merchantability and fitness for a particular purpose. Should the mineral lease awarded by the Louisiana State Mineral and Energy Board be subsequently modified, cancelled or abrogated due to the existence of conflicting leases, operating agreements, private claims or other future obligations or conditions which may affect all or any portion of the leased Tract, it shall not relieve the Lessee of the obligation to pay any bonus due thereon to the Louisiana State Mineral and Energy Board, nor shall the Louisiana State Mineral and Energy Board be obligated to refund any

consideration paid by the Lessor prior to such modification, cancellation, or abrogation, including, but not limited to, bonuses, rentals and royalties.

NOTE: The State of Louisiana does hereby reserve, and this lease shall be subject to, the imprescriptible right of surface use in the nature of a servitude in favor of the Department of Natural Resources, including its Offices and Commissions, for the sole purpose of implementing, constructing, servicing and maintaining approved coastal zone management and/or restoration projects. Utilization of any and all rights derived under this lease by the mineral lessee, its agents, successors or assigns, shall not interfere with nor hinder the reasonable surface use by the Department of Natural Resources, its Offices or Commissions, as herein above reserved.

Applicant: OIL LAND SERVICES, INC.

Bidder	Cash Payment	Price/Acre	Rental	Oil	Gas	Other

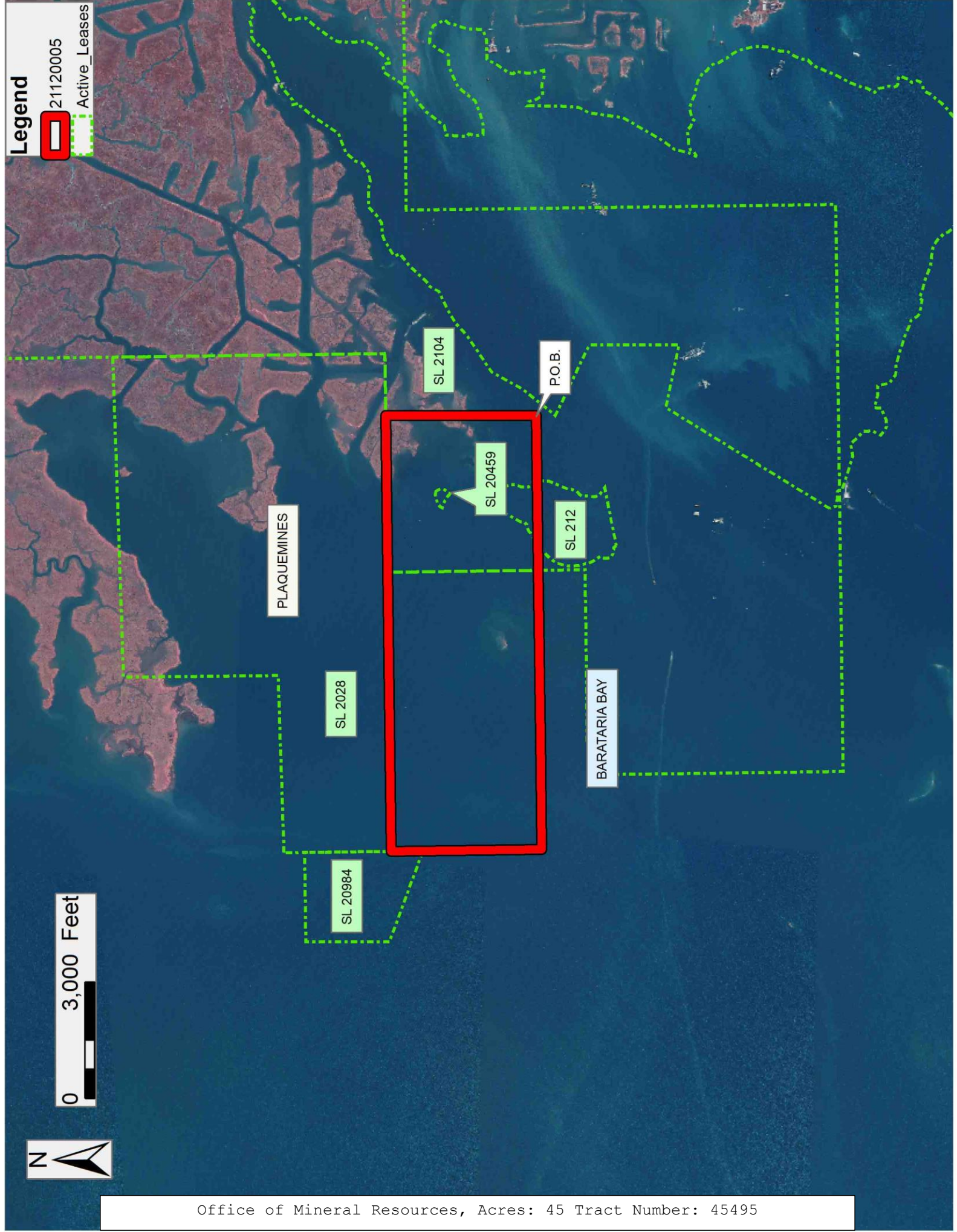
Legend



21120005

Active_Leases

0 3,000 Feet



TRACT 45496 - Plaquemines Parish, Louisiana

All of the lands now or formerly constituting the beds and bottoms of all water bodies of every nature and description as to which title is vested in the State of Louisiana, together with all islands arising therein and other lands formed by accretion or by reliction, where allowed by law, excepting tax adjudicated lands, and not presently under mineral lease on December 8, 2021, situated in Plaquemines Parish, Louisiana, and more particularly described as follows: Beginning at a point having Coordinates of X = 2,464,446.00 and Y = 268,202.33; thence East 8,457.86 feet to the Southwest corner of State Lease No. 2028, having Coordinates of X = 2,472,903.86 and Y = 268,202.32; thence North 89 degrees 15 minutes 00 seconds East 1,920.01 feet along the South line of said State Lease No. 2028 to a point having Coordinates of X = 2,474,823.70 and Y = 268,227.46; thence South 00 degrees 16 minutes 32 seconds East 1,208.37 feet to a point having Coordinates of X = 2,474,829.51 and Y = 267,019.11; thence South 00 degrees 45 minutes 00 seconds East 6,600.00 feet to a point having Coordinates of X = 2,474,915.90 and Y = 260,419.67; thence South 89 degrees 15 minutes 14 seconds West 10,470.80 feet to a point having Coordinates of X = 2,464,445.99 and Y = 260,283.29; thence North 7,919.04 feet to the point of beginning, **LESS AND EXCEPT** any portion of the above described tract that may lie within State Lease No. 2014 and State Lease No. 2028, containing approximately **1,878.58 acres**, all as more particularly outlined on a plat on file in the Office of Mineral Resources, Department of Natural Resources. All bearings, distances and coordinates are based on Louisiana Coordinate System of 1927, (North or South Zone), where applicable.

NOTE: The above description of the Tract nominated for lease has been provided and corrected, where required, exclusively by the nomination party. Any mineral lease selected from this Tract and awarded by the Louisiana State Mineral and Energy Board shall be without warranty of any kind, either express, implied, or statutory, including, but not limited to, the implied warranties of merchantability and fitness for a particular purpose. Should the mineral lease awarded by the Louisiana State Mineral and Energy Board be subsequently modified, cancelled or abrogated due to the existence of conflicting leases, operating agreements, private claims or other future obligations or conditions which may affect all or any portion of the leased Tract, it shall not relieve the Lessee of the obligation to pay any bonus due thereon to the Louisiana State Mineral and Energy Board, nor shall the Louisiana State Mineral and Energy Board be obligated to refund any consideration paid by the Lessor prior to such modification, cancellation, or abrogation, including, but not limited to, bonuses, rentals and royalties.

NOTE: The State of Louisiana does hereby reserve, and this lease shall be subject to, the imprescriptible right of surface use in the nature of a servitude in favor of the Department of Natural Resources, including its Offices and Commissions, for the sole purpose of implementing, constructing, servicing and maintaining approved coastal zone management and/or restoration projects. Utilization of any and all rights derived under this lease by the mineral lessee, its agents, successors or assigns, shall not

interfere with nor hinder the reasonable surface use by the Department of Natural Resources, its Offices or Commissions, as herein above reserved.

Applicant: OIL LAND SERVICES, INC.

Bidder	Cash Payment	Price/Acre	Rental	Oil	Gas	Other

Legend



21120007

Active_Leases

SL 2028

SL 2104

PLAQUEMINES

BARATARIA BAY

P.O.B.



TRACT 45497 - Plaquemines Parish, Louisiana

All of the lands now or formerly constituting the beds and bottoms of all water bodies of every nature and description as to which title is vested in the State of Louisiana, together with all islands arising therein and other lands formed by accretion or by reliction, where allowed by law, excepting tax adjudicated lands, and not presently under mineral lease on December 8, 2021, situated in Plaquemines Parish, Louisiana, and more particularly described as follows: Beginning at a point within State Lease No. 2104 having Coordinates of X = 2,484,119.99 and Y = 268,349.13; thence South approximately 497.77 feet to a point being a corner on the Western boundary of State Lease No. 212, as amended; thence along the West line of said State Lease No. 212 the following courses: South 64 degrees 17 minutes 02 seconds East 2,014.29 feet, South a distance of 2,318.33 feet, North 78 degrees 01 minutes 47 seconds West a distance of 1650.68 feet, and South 31 degrees 34 minutes 53 seconds West a distance of 2,214.44 feet to a point having Coordinates of X = 2,483,160.28 and Y = 263,113.52, said point also being on the East line of State Lease No. 17990; thence along the Eastern and Northern boundary of said State Lease No. 17990 the following courses: North 04 degrees 38 minutes 19 seconds East a distance of 176.83 feet, North 00 degrees 33 minutes 26 seconds East a distance of 195.41 feet, North 00 degrees 12 minutes 37 seconds West a distance of 109.00 feet, North 02 degrees 04 minutes 03 seconds West a distance of 110.87 feet, North 04 degrees 11 minutes 43 seconds West a distance of 107.99 feet, North 08 degrees 23 minutes 31 seconds West a distance of 102.09 feet, North 12 degrees 55 minutes 26 seconds West a distance of 91.21 feet, North 21 degrees 08 minutes 19 seconds West a distance of 113.97 feet, North 46 degrees 36 minutes 41 seconds West a distance of 82.98 feet, North 53 degrees 10 minutes 48 seconds West a distance of 69.08 feet, North 57 degrees 12 minutes 50 seconds West a distance of 87.90 feet, North 59 degrees 49 minutes 55 seconds West a distance of 107.45 feet, North 65 degrees 55 minutes 09 seconds West a distance of 103.18 feet, North 70 degrees 46 minutes 13 seconds West a distance of 116.29 feet, North 74 degrees 51 minutes 15 seconds West a distance of 156.54 feet, North 78 degrees 26 minutes 42 seconds West a distance of 169.74 feet, North 81 degrees 35 minutes 53 seconds West a distance of 184.78 feet, North 84 degrees 18 minutes 43 seconds West a distance of 201.79 feet and South 72 degrees 00 minutes 00 seconds West a distance of 1,996.72 feet to a point being the Northeast corner of State Lease No. 18907 having Coordinates of X = 2,480,000.00 and Y = 263,898.48; thence North a distance of 3,188.31 feet to a point having Coordinates of X = 2,480,000.00 and Y = 267,086.79, South 89 degrees 15 minutes 00 seconds West a distance of 5,170.95 feet to a point having Coordinates of X = 2,474,829.50 and Y = 267,019.11 and North a distance of 1,208.42 feet to a point being on the South line of State Lease No. 2028, as amended, having Coordinates of X = 2,474,829.50 and Y = 268,227.53; thence Easterly approximately 5,285 feet along the South line of said State Lease No. 2028 to its Southernmost Southeast corner, also being a point on the Western boundary of State Lease No. 2104; thence Easterly approximately 4,010 feet to the point of beginning, **LESS AND EXCEPT** any portion of the above described tract that may lie within State Lease No. 2104, State Lease No. 2028 and

State Lease No. 212, as amended, containing approximately **554 acres**, all as more particularly outlined on a plat on file in the Office of Mineral Resources, Department of Natural Resources. All bearings, distances and coordinates are based on Louisiana Coordinate System of 1927, (North or South Zone), where applicable.

NOTE: The above description of the Tract nominated for lease has been provided and corrected, where required, exclusively by the nomination party. Any mineral lease selected from this Tract and awarded by the Louisiana State Mineral and Energy Board shall be without warranty of any kind, either express, implied, or statutory, including, but not limited to, the implied warranties of merchantability and fitness for a particular purpose. Should the mineral lease awarded by the Louisiana State Mineral and Energy Board be subsequently modified, cancelled or abrogated due to the existence of conflicting leases, operating agreements, private claims or other future obligations or conditions which may affect all or any portion of the leased Tract, it shall not relieve the Lessee of the obligation to pay any bonus due thereon to the Louisiana State Mineral and Energy Board, nor shall the Louisiana State Mineral and Energy Board be obligated to refund any consideration paid by the Lessor prior to such modification, cancellation, or abrogation, including, but not limited to, bonuses, rentals and royalties.

NOTE: The State of Louisiana does hereby reserve, and this lease shall be subject to, the imprescriptible right of surface use in the nature of a servitude in favor of the Department of Natural Resources, including its Offices and Commissions, for the sole purpose of implementing, constructing, servicing and maintaining approved coastal zone management and/or restoration projects. Utilization of any and all rights derived under this lease by the mineral lessee, its agents, successors or assigns, shall not interfere with nor hinder the reasonable surface use by the Department of Natural Resources, its Offices or Commissions, as herein above reserved.

Applicant: OIL LAND SERVICES, INC.

Bidder	Cash Payment	Price/Acre	Rental	Oil	Gas	Other

Legend



21120006

Active_Leases

0 2,000 Feet

