

TRACT 45498 - St. Charles Parish, Louisiana

All of the lands now or formerly constituting the beds and bottoms of all water bodies of every nature and description as to which title is vested in the State of Louisiana, together with all islands arising therein and other lands formed by accretion or by reliction, where allowed by law, excepting tax adjudicated lands, and not presently under mineral lease on January 12, 2022, situated in St. Charles Parish, Louisiana, and more particularly described as follows: Beginning at a point being the Southernmost Southwest corner of State Lease No. 19232, Tract 3, as amended, having Coordinates of X = 2,338,135.00 and Y = 374,590.33; thence West 2,635.00 feet to a point having Coordinates of X = 2,335,500.00 and Y = 374,590.33; thence North 11,909.67 feet to a point having Coordinates of X = 2,335,500.00 and Y = 386,500.00; thence East 11,900.00 feet to a point having Coordinates of X = 2,347,400.00 and Y = 386,500.00; thence South 11,910.00 feet to a point having Coordinates of X = 2,347,400.00 and Y = 374,590.33; thence South 89 degrees 59 minutes 51 seconds West 7,465.00 feet to a point being the Southernmost Southeast corner of said State Lease No. 19232, Tract 3, as amended, having Coordinates of 2,339,935.00 and 374,590.33; thence along the boundary of said State Lease No. 19232, Tract 3, as amended, the following: North 2,420.00 feet to a point having Coordinates of X = 2,339,935.00 and Y = 377,010.33, East 1,858.53 feet to a point having Coordinates of X = 2,341,793.53 and Y = 378,086.53, and North 1,076.20 to a point being the Easternmost Southeast corner of State Lease No. 19205 having Coordinates of X = 2,341,793.53 and Y = 378,086.53; thence North 05 degrees 25 minutes 05 seconds East 1,851.70 feet along the East line of State Lease No. 19205 to the Southernmost Northeast corner of State Lease No. 19205 having Coordinates of X = 2,341,968.37 and Y = 379,929.96, said point also being the Southernmost point of State Lease No. 19232, Tract 1, as amended; thence along the boundary of said State Lease No. 19232, Tract 1, as amended, the following: North 05 degrees 25 minutes 05 seconds East 665.01 feet to a point having Coordinates of X = 2,342,031.16 and Y = 380,592.00, East 3,478.84 feet to a point having Coordinates of X = 2,345,510.00 and Y = 380,592.00, and North 330.61 feet to a point being the Southeast corner of State Lease No. 19204, having Coordinates of X = 2,345,510.00 and Y = 380,922.61; thence North 1,023.13 feet along the boundary of said State Lease No. 19204 to a point being the Southeast corner of State Lease No. 19203, having Coordinates of X = 2,345,510.00 and Y = 380,945.74; thence along the boundary of said State Lease No. 19203 the following: North 1,807.05 feet to a point having the Coordinates of X = 2,345,510.00 and 383,752.79 and North 45 degrees 13 minutes 17 seconds West 851.17 feet to a point having Coordinates of X = 2,344,905.81 and Y = 384,352.33, said point being a point on the north line of said State Lease No. 19232, Tract 1, as amended; thence South 87 degrees 35 minutes 51 seconds West 3,551.67 feet along the North line of said State Lease No. 19232, Tract 1, as amended, to a point being the Northwest corner of State Lease No. 19202 having Coordinates of X = 2,341,357.26 and Y = 38,420,345.00, said point also being the Northeastern point of State Lease No. 19232, Tract 2, as amended; thence along the boundary of said State Lease No. 19232, Tract 2, as amended, the following: South 87 degrees 35 minutes 52 seconds West 477.86 feet to a point having Coordinates of X = 2,340,879.82

and Y = 384,183.42, South 1,676.60 feet to a point having Coordinates of X = 2,340,879.82 and Y = 382,506.82, West 2,744.82 feet to a point having Coordinates of X = 2,338,135.00 and Y = 382,506.82, and South 2,841.59 feet to a point being the Northwest corner of State Lease No. 19206 having Coordinates of X = 2,338,135.00 and Y = 379,665.23; thence South 2,539.43 feet along the boundary of said State Lease No. 19206 to a point being its Southwest corner having Coordinates of X = 2,338,135.00 and Y = 377,125.80, said point also being the Northwesternmost point of said State Lease No. 19232, Tract 3, as amended; thence South for a distance of 7,916.49 feet to the point of beginning of Tract 1, containing **2,337.54 acres**, all as more particularly outlined on a plat on file in the Office of Mineral Resources, Department of Natural Resources. All bearings, distances and coordinates are based on Louisiana Coordinate System of 1927, (North or South Zone), where applicable.

NOTE: The above description of the Tract nominated for lease has been provided and corrected, where required, exclusively by the nomination party. Any mineral lease selected from this Tract and awarded by the Louisiana State Mineral and Energy Board shall be without warranty of any kind, either express, implied, or statutory, including, but not limited to, the implied warranties of merchantability and fitness for a particular purpose. Should the mineral lease awarded by the Louisiana State Mineral and Energy Board be subsequently modified, cancelled or abrogated due to the existence of conflicting leases, operating agreements, private claims or other future obligations or conditions which may affect all or any portion of the leased Tract, it shall not relieve the Lessee of the obligation to pay any bonus due thereon to the Louisiana State Mineral and Energy Board, nor shall the Louisiana State Mineral and Energy Board be obligated to refund any consideration paid by the Lessor prior to such modification, cancellation, or abrogation, including, but not limited to, bonuses, rentals and royalties.

NOTE: The State of Louisiana does hereby reserve, and this lease shall be subject to, the imprescriptible right of surface use in the nature of a servitude in favor of the Department of Natural Resources, including its Offices and Commissions, for the sole purpose of implementing, constructing, servicing and maintaining approved coastal zone management and/or restoration projects. Utilization of any and all rights derived under this lease by the mineral lessee, its agents, successors or assigns, shall not interfere with nor hinder the reasonable surface use by the Department of Natural Resources, its Offices or Commissions, as herein above reserved.

Applicant: SHREK EXPLORATION

Bidder	Cash Payment	Price/Acre	Rental	Oil	Gas	Other

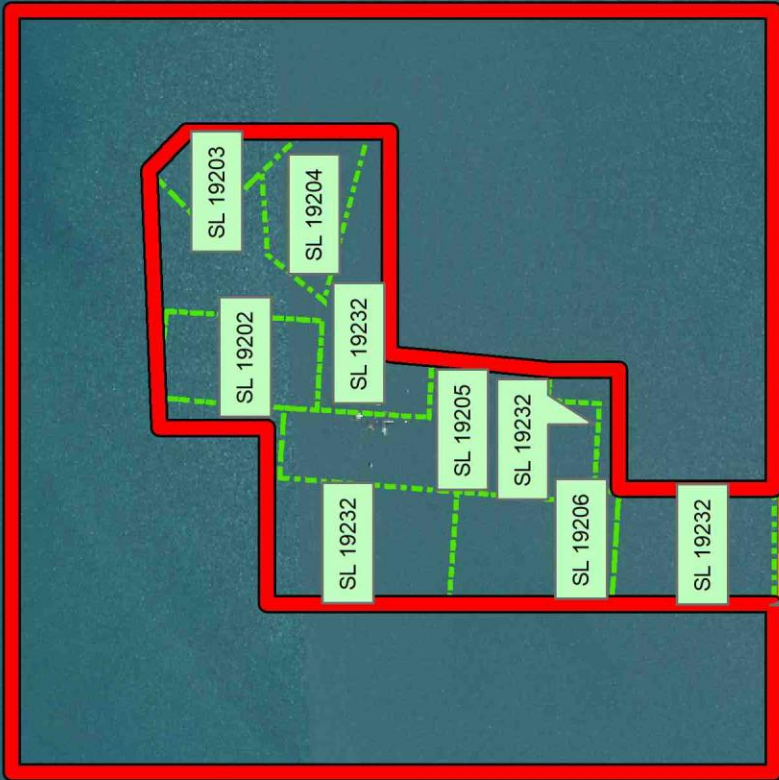
Legend

- 22010004
- Active_Leases
- Counties

0 2,500 Feet



ST CHARLES



LAKE SALVADOR

LAFOURCHE

P.O.B.

TRACT 45499 - Lafourche Parish, Louisiana

All of the lands now or formerly constituting the beds and bottoms of all water bodies of every nature and description as to which title is vested in the State of Louisiana, together with all islands arising therein and other lands formed by accretion or by reliction, where allowed by law, excepting tax adjudicated lands, and not presently under mineral lease on January 12, 2022, situated in Lafourche Parish, Louisiana, and more particularly described as follows: Beginning at a point having Coordinates of X = 2,319,110.00 and Y = 324,040.00; thence South 4,500.00 feet to a point having Coordinates of X = 2,319,110.00 and Y = 319,540.00; thence West 8,050.00 feet to a point having Coordinates of X = 2,311,060.00 and Y = 319,540.00; thence North 4,500.00 feet to a point having Coordinates of X = 2,311,060.00 and Y = 324,040.00; thence East 8,050.00 feet to the point of beginning, containing approximately **30 acres**, all as more particularly outlined on a plat on file in the Office of Mineral Resources, Department of Natural Resources. All bearings, distances and coordinates are based on Louisiana Coordinate System of 1927, (North or South Zone), where applicable.

NOTE: The above description of the Tract nominated for lease has been provided and corrected, where required, exclusively by the nomination party. Any mineral lease selected from this Tract and awarded by the Louisiana State Mineral and Energy Board shall be without warranty of any kind, either express, implied, or statutory, including, but not limited to, the implied warranties of merchantability and fitness for a particular purpose. Should the mineral lease awarded by the Louisiana State Mineral and Energy Board be subsequently modified, cancelled or abrogated due to the existence of conflicting leases, operating agreements, private claims or other future obligations or conditions which may affect all or any portion of the leased Tract, it shall not relieve the Lessee of the obligation to pay any bonus due thereon to the Louisiana State Mineral and Energy Board, nor shall the Louisiana State Mineral and Energy Board be obligated to refund any consideration paid by the Lessor prior to such modification, cancellation, or abrogation, including, but not limited to, bonuses, rentals and royalties.

NOTE: The State of Louisiana does hereby reserve, and this lease shall be subject to, the imprescriptible right of surface use in the nature of a servitude in favor of the Department of Natural Resources, including its Offices and Commissions, for the sole purpose of implementing, constructing, servicing and maintaining approved coastal zone management and/or restoration projects. Utilization of any and all rights derived under this lease by the mineral lessee, its agents, successors or assigns, shall not interfere with nor hinder the reasonable surface use by the Department of Natural Resources, its Offices or Commissions, as herein above reserved.

Applicant: HOLDEN OIL & GAS

Bidder	Cash Payment	Price/Acre	Rental	Oil	Gas	Other

Legend



22010001

P.O.B.

T17S - R21E

LAFOURCHE

T18S - R21E

BAYOU LAFOURCHE

0 2,000 Feet



TRACT 45500 - Lafourche Parish, Louisiana

All of the lands now or formerly constituting the beds and bottoms of all water bodies of every nature and description as to which title is vested in the State of Louisiana, together with all islands arising therein and other lands formed by accretion or by reliction, where allowed by law, excepting tax adjudicated lands, and not presently under mineral lease on January 12, 2022, situated in Lafourche Parish, Louisiana, and more particularly described as follows: Beginning at a point having Coordinates of X = 2,321,740.00 and Y = 319,540.00; thence South 4,500.00 feet to a point having Coordinates of X = 2,321,740.00 and Y = 315,040.00; thence West 8,050.00 feet to a point having Coordinates of X = 2,313,690.00 and Y = 315,040.00; thence North 4,500.00 feet to a point having Coordinates of X = 2,313,690.00 and Y = 319,540.00; thence East 8,050.00 feet to the point of beginning, containing approximately **18 acres**, all as more particularly outlined on a plat on file in the Office of Mineral Resources, Department of Natural Resources. All bearings, distances and coordinates are based on Louisiana Coordinate System of 1927, (North or South Zone), where applicable.

NOTE: The above description of the Tract nominated for lease has been provided and corrected, where required, exclusively by the nomination party. Any mineral lease selected from this Tract and awarded by the Louisiana State Mineral and Energy Board shall be without warranty of any kind, either express, implied, or statutory, including, but not limited to, the implied warranties of merchantability and fitness for a particular purpose. Should the mineral lease awarded by the Louisiana State Mineral and Energy Board be subsequently modified, cancelled or abrogated due to the existence of conflicting leases, operating agreements, private claims or other future obligations or conditions which may affect all or any portion of the leased Tract, it shall not relieve the Lessee of the obligation to pay any bonus due thereon to the Louisiana State Mineral and Energy Board, nor shall the Louisiana State Mineral and Energy Board be obligated to refund any consideration paid by the Lessor prior to such modification, cancellation, or abrogation, including, but not limited to, bonuses, rentals and royalties.

NOTE: The State of Louisiana does hereby reserve, and this lease shall be subject to, the imprescriptible right of surface use in the nature of a servitude in favor of the Department of Natural Resources, including its Offices and Commissions, for the sole purpose of implementing, constructing, servicing and maintaining approved coastal zone management and/or restoration projects. Utilization of any and all rights derived under this lease by the mineral lessee, its agents, successors or assigns, shall not interfere with nor hinder the reasonable surface use by the Department of Natural Resources, its Offices or Commissions, as herein above reserved.

Applicant: HOLDEN OIL & GAS

Bidder	Cash Payment	Price/Acre	Rental	Oil	Gas	Other

Legend



22010002

0 2,000 Feet



LAFOURCHE

T18S - R21E

P.O.B.

BAYOU LAFOURCHE

TRACT 45501 - Lafourche Parish, Louisiana

All of the lands now or formerly constituting the beds and bottoms of all water bodies of every nature and description as to which title is vested in the State of Louisiana, together with all islands arising therein and other lands formed by accretion or by reliction, where allowed by law, excepting tax adjudicated lands, and not presently under mineral lease on January 12, 2022, situated in Lafourche Parish, Louisiana, and more particularly described as follows: Beginning at a point having Coordinates of X = 2,321,740.00 and Y = 315,040.00; thence South 4,500.00 feet to a point having Coordinates of X = 2,321,740.00 and Y = 310,540.00; thence West 8,050.00 feet to a point having Coordinates of X = 2,313,690.00 and Y = 310,540.00; thence North 4,500.00 feet to a point having Coordinates of X = 2,313,690.00 and Y = 315,040.00; thence East 8,050.00 feet to the point of beginning, containing approximately **17 acres**, all as more particularly outlined on a plat on file in the Office of Mineral Resources, Department of Natural Resources. All bearings, distances and coordinates are based on Louisiana Coordinate System of 1927, (North or South Zone), where applicable.

NOTE: The above description of the Tract nominated for lease has been provided and corrected, where required, exclusively by the nomination party. Any mineral lease selected from this Tract and awarded by the Louisiana State Mineral and Energy Board shall be without warranty of any kind, either express, implied, or statutory, including, but not limited to, the implied warranties of merchantability and fitness for a particular purpose. Should the mineral lease awarded by the Louisiana State Mineral and Energy Board be subsequently modified, cancelled or abrogated due to the existence of conflicting leases, operating agreements, private claims or other future obligations or conditions which may affect all or any portion of the leased Tract, it shall not relieve the Lessee of the obligation to pay any bonus due thereon to the Louisiana State Mineral and Energy Board, nor shall the Louisiana State Mineral and Energy Board be obligated to refund any consideration paid by the Lessor prior to such modification, cancellation, or abrogation, including, but not limited to, bonuses, rentals and royalties.

NOTE: The State of Louisiana does hereby reserve, and this lease shall be subject to, the imprescriptible right of surface use in the nature of a servitude in favor of the Department of Natural Resources, including its Offices and Commissions, for the sole purpose of implementing, constructing, servicing and maintaining approved coastal zone management and/or restoration projects. Utilization of any and all rights derived under this lease by the mineral lessee, its agents, successors or assigns, shall not interfere with nor hinder the reasonable surface use by the Department of Natural Resources, its Offices or Commissions, as herein above reserved.

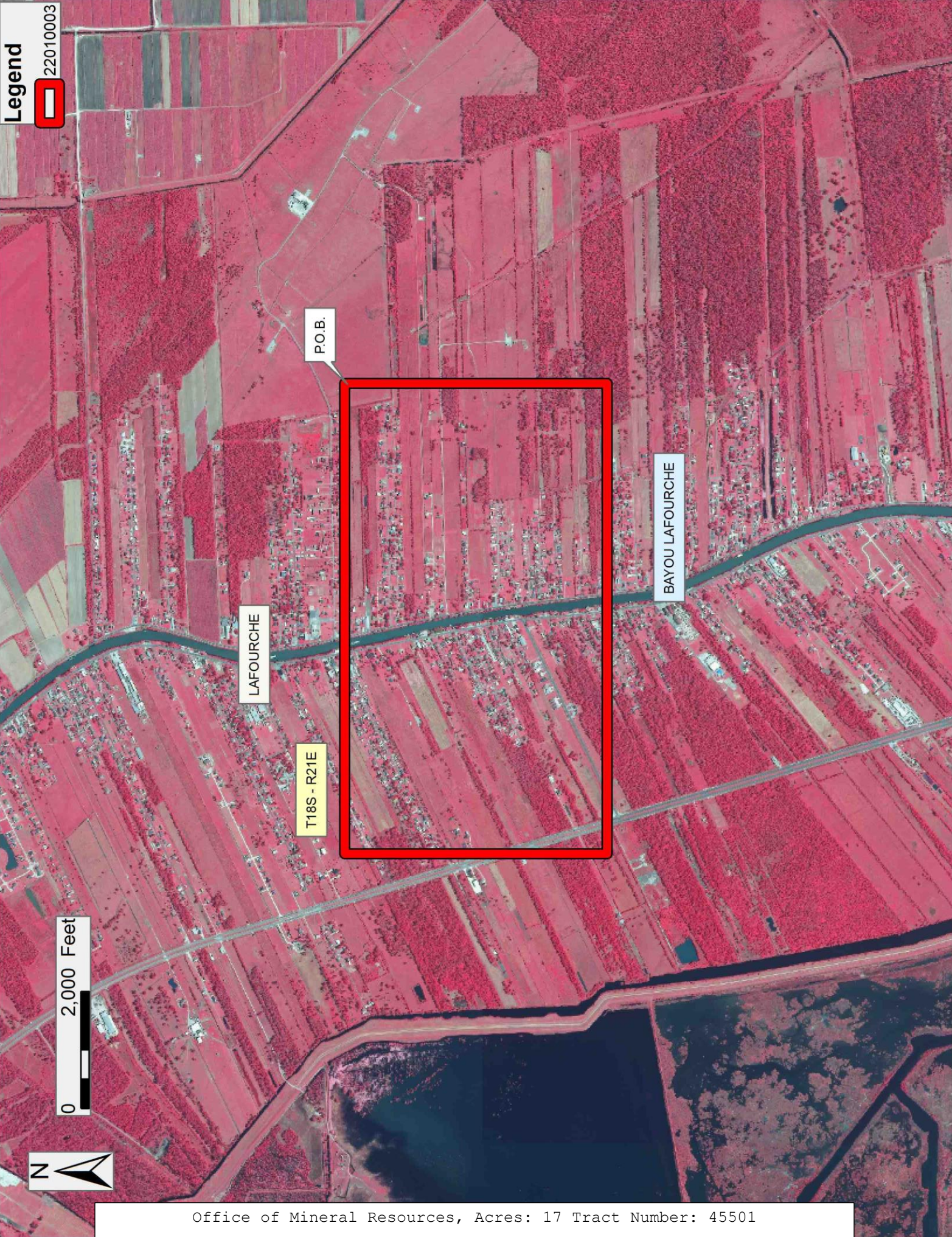
Applicant: HOLDEN OIL & GAS

Bidder	Cash Payment	Price/Acre	Rental	Oil	Gas	Other

Legend



22010003



Office of Mineral Resources, Acres: 17 Tract Number: 45501