

TRACT 45502 - Cameron Parish, Louisiana

A portion of all State owned lands, including high and marsh lands and land now or formerly constituting the beds and bottoms of any water body, within the boundaries of the Rockefeller Wildlife Refuge and Game Preserve, not presently under mineral lease by the State of Louisiana on January 12, 2022, situated in Cameron Parish, Louisiana, and described as follows: Beginning at a point with the boundary of the Rockefeller Wildlife Refuge having Coordinates of X = 1,576,879.35 and y = 374,598.42, said point being an inside corner of State Lease No. 2038 Parcel A, as amended; thence Easterly approximately 4,593 feet to a point being the Easternmost Southeast corner of said State Lease No. 2038 Parcel A, as amended, said point also being a point on the Northern boundary of said Rockefeller Wildlife Refuge; thence South 89 degrees 16 minutes 36 seconds East 1,479.27 feet to a point on the boundary of said Parcel B of said State Lease No. 2038; thence along the boundary of said Parcel B of said State Lease No. 2038 the following courses: Easterly approximately 1,328 feet to a point, South 72 degrees 05 minutes 59 seconds East approximately 862 feet, South 68 degrees 29 minutes 55 seconds East 709.37 feet, South 66 degrees 48 minutes 06 seconds East approximately 155 feet, and North 00 degrees 43 minutes 24 seconds East approximately 566 feet to its Northeast corner, said corner also being on the North boundary of said Rockefeller Wildlife Refuge; thence Easterly approximately 2,958 feet along the boundary of said Rockefeller Wildlife Refuge and Southerly approximately 5,294 feet to a point having Coordinates of X = 1,588,788.93 and Y = 369,152.39; thence North 88 degrees 54 minutes 43 seconds West 2,946.03 feet to a point Coordinates of x = 1,585,843.43 and y = 369,208.33; thence South 01 degrees 09 minutes 51 seconds West 5,267.33 feet to a point having Coordinates of X = 1,585,736.42 and Y = 363,942.09; thence North 89 degrees 18 minutes 28 seconds West 2,947.46 feet to a point having Coordinates of X = 1,582,789.18 and Y = 363,977.69; thence North 00 degrees 53 minutes 05 seconds East 2,622.17 feet to a point having Coordinates of x = 1,582,829.67 and y = 366,599.55; thence North 89 degrees 09 minutes 26 seconds West 2,956.17 feet to a point having Coordinates of X = 1,579,873.82 and Y = 366,643.03; thence North 89 degrees 16 minutes 58 seconds West 3,077.91 feet to a point having Coordinates of X = 1,576,796.15 and Y = 366,681.55; thence North 00 degrees 31 minutes 13 seconds East 2,637.31 feet to a point being a corner of said State Lease No. 2038, Parcel A, as amended, having Coordinates of X = 1,576,820.09 and Y = 369,318.75; thence North 00 degrees 38 minutes 35 seconds Easy 5,280.00 feet to the point of beginning, **LESS AND EXCEPT** that portion, if any, of State Lease No. 2038, as amended, that may lie within the above described tract, **ALSO LESS AND EXCEPT** that portion, if any, of the above described tract which may lie outside the boundary of the Rockefeller Wildlife Refuge. The above described tract contains approximately **2,166 acres**, all as more particularly outlined on a plat on file in the Office of Mineral Resources, Department of Natural Resources. All bearings, distances and coordinates are based on Louisiana Coordinate System of 1927, (South Zone).

NOTE: The above description of the Tract nominated for lease has been provided and corrected, where required, exclusively by the nomination party.

Any mineral lease selected from this Tract and awarded by the Louisiana State Mineral and Energy Board shall be without warranty of any kind, either express, implied, or statutory, including, but not limited to, the implied warranties of merchantability and fitness for a particular purpose. Should the mineral lease awarded by the Louisiana State Mineral and Energy Board be subsequently modified, cancelled or abrogated due to the existence of conflicting leases, operating agreements, private claims or other future obligations or conditions which may affect all or any portion of the leased Tract, it shall not relieve the Lessee of the obligation to pay any bonus due thereon to the Louisiana State Mineral and Energy Board, nor shall the Louisiana State Mineral and Energy Board be obligated to refund any consideration paid by the Lessor prior to such modification, cancellation, or abrogation, including, but not limited to, bonuses, rentals and royalties.

NOTE: This tract is located in the Rockefeller Wildlife Refuge and Game Preserve Area under the jurisdiction of the Louisiana Department of Wildlife and Fisheries which has promulgated rules and regulations for the protection of game and wildlife on the aforesaid Tract and, therefore, shall be subject to said rules and regulations, a copy of which shall be attached to the mineral leases. In addition to the specific rules and regulations applicable, the following shall apply regarding operations under this mineral lease:

- Compliance with the Rockefeller mineral regulations shall be required.
- No surface activities will be allowed in the vicinity of the Headquarters and associated facilities without written authorization from the Department.
- Board road access will be required when feasible as determined by the Department.
- In the event that board road access is not feasible, existing canals and waterways will be utilized to access and drill the proposed well location. In the event the well location obstructs navigation, a maximum of 350 feet of new canal dredging will be allowed in an effort to eliminate the navigation obstruction.
- Compensatory mitigation will be required for unavoidable wetland losses.
- No discharges will be allowed, a containerized close loop system will be required.
- Seasonal restrictions may be imposed within specific management units dependent upon wildlife population levels.
- A minimum bonus of \$350.00 per acre and a minimum royalty of 25% will be required.
- All spoil materials generated during dredging operations shall be placed at sites determined by the Department, additionally, the Department shall have discretion to require the user of a hydraulic dredge or spray dredge.
- Prior to submitting application for wetland permits to Federal and State permitting agencies the leaseholder shall coordinate project details

with the Department of Wildlife and Fisheries. Contact person for the Department will be Kyle Balkum at (225)765-2819.

Additionally, the Department will require a minimum bonus of \$350.00 per acre and a minimum royalty of 25%.

NOTE: The State of Louisiana does hereby reserve, and this lease shall be subject to, the imprescriptible right of surface use in the nature of a servitude in favor of the Department of Natural Resources, including its Offices and Commissions, for the sole purpose of implementing, constructing, servicing and maintaining approved coastal zone management and/or restoration projects. Utilization of any and all rights derived under this lease by the mineral lessee, its agents, successors or assigns, shall not interfere with nor hinder the reasonable surface use by the Department of Natural Resources, its Offices or Commissions, as herein above reserved.

Applicant: MIDNITE ENERGY, INC.

Bidder	Cash Payment	Price/Acre	Rental	Oil	Gas	Other

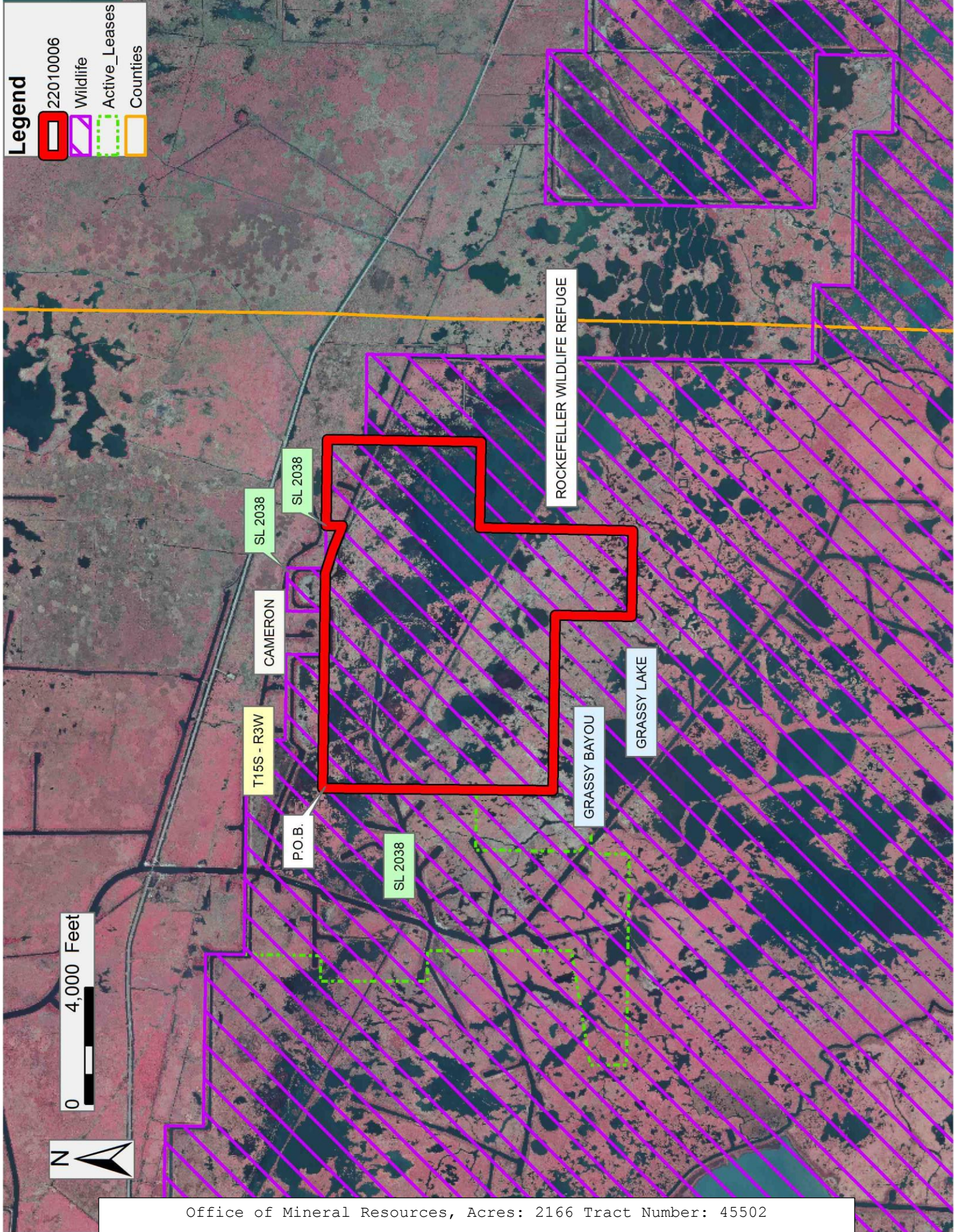
Legend

- 22010006
- Wildlife
- Active_Leases
- Counties

0 4,000 Feet



Office of Mineral Resources, Acres: 2166 Tract Number: 45502



TRACT 45503 - Cameron Parish, Louisiana

A portion of all State owned lands, including high and marsh lands and land now or formerly constituting the beds and bottoms of any water body, within the boundaries of the Rockefeller Wildlife Refuge and Game Preserve, not presently under mineral lease by the State of Louisiana on January 12, 2022, situated in Cameron Parish, Louisiana, and described as follows: Beginning at a point within the boundary of the Rockefeller Wildlife Refuge having Coordinates of X = 1,588,788.93 and Y = 369,152.39; thence Northerly approximately 3,970 feet to a point on the North line of said Rockefeller Wildlife Refuge; thence continue Easterly approximately 2,956 feet and Southerly approximately 14,480 feet along the boundary of said Rockefeller Wildlife Refuge to a point of intersection with a line having a bearing of South 89 degrees 36 minutes 13 seconds East, commencing at a point having Coordinates of X = 1,588,642.22 and Y = 358,623.47; thence North 89 degrees 36 minutes 13 seconds West approximately 2,909 feet to a point having Coordinates of X = 1,588,642.22 and Y = 358,623.47; thence North 00 degrees 32 minutes 58 seconds East 5269.08 feet to a point having Coordinates of X = 1,588,692.75 and Y = 363,892.31; thence North 89 degrees 02 minutes 07 seconds West 2,956.75 feet to a point Coordinates of X = 1,585,736.42 and Y = 363,942.09; thence North 01 degrees 09 minutes 51 seconds East 5,267.33 feet to a point having Coordinates of X = 1,585,843.43 and Y = 369,208.33; thence South 88 degrees 54 minutes 43 seconds East 2,946.03 feet to the point Of beginning, **LESS AND EXCEPT** that portion, if any, of the above described tract which may lie outside the boundary of the Rockefeller Wildlife Refuge. The above described tract contains approximately **1,336 acres**, all as more particularly outlined on a plat on file in the Office of Mineral Resources, Department of Natural Resources. All bearings, distances and coordinates are based on Louisiana Coordinate System of 1927, (South Zone).

NOTE: The above description of the Tract nominated for lease has been provided and corrected, where required, exclusively by the nomination party. Any mineral lease selected from this Tract and awarded by the Louisiana State Mineral and Energy Board shall be without warranty of any kind, either express, implied, or statutory, including, but not limited to, the implied warranties of merchantability and fitness for a particular purpose. Should the mineral lease awarded by the Louisiana State Mineral and Energy Board be subsequently modified, cancelled or abrogated due to the existence of conflicting leases, operating agreements, private claims or other future obligations or conditions which may affect all or any portion of the leased Tract, it shall not relieve the Lessee of the obligation to pay any bonus due thereon to the Louisiana State Mineral and Energy Board, nor shall the Louisiana State Mineral and Energy Board be obligated to refund any consideration paid by the Lessor prior to such modification, cancellation, or abrogation, including, but not limited to, bonuses, rentals and royalties.

NOTE: This tract is located in the Rockefeller Wildlife Refuge and Game Preserve Area under the jurisdiction of the Louisiana Department of Wildlife and Fisheries which has promulgated rules and regulations for the protection of game and wildlife on the aforesaid Tract and, therefore, shall be subject

to said rules and regulations, a copy of which shall be attached to the mineral leases. In addition to the specific rules and regulations applicable, the following shall apply regarding operations under this mineral lease:

- Compliance with the Rockefeller mineral regulations shall be required.
- No surface activities will be allowed in the vicinity of the Headquarters and associated facilities without written authorization from the Department.
- Board road access will be required when feasible as determined by the Department.
- In the event that board road access is not feasible, existing canals and waterways will be utilized to access and drill the proposed well location. In the event the well location obstructs navigation, a maximum of 350 feet of new canal dredging will be allowed in an effort to eliminate the navigation obstruction.
- Compensatory mitigation will be required for unavoidable wetland losses.
- No discharges will be allowed, a containerized close loop system will be required.
- Seasonal restrictions may be imposed within specific management units dependent upon wildlife population levels.
- A minimum bonus of \$350.00 per acre and a minimum royalty of 25% will be required.
- All spoil materials generated during dredging operations shall be placed at sites determined by the Department, additionally, the Department shall have discretion to require the user of a hydraulic dredge or spray dredge.
- Prior to submitting application for wetland permits to Federal and State permitting agencies the leaseholder shall coordinate project details with the Department of Wildlife and Fisheries. Contact person for the Department will be Kyle Balkum at (225)765-2819.

Additionally, the Department will require a minimum bonus of \$350.00 per acre and a minimum royalty of 25%.

NOTE: The State of Louisiana does hereby reserve, and this lease shall be subject to, the imprescriptible right of surface use in the nature of a servitude in favor of the Department of Natural Resources, including its Offices and Commissions, for the sole purpose of implementing, constructing, servicing and maintaining approved coastal zone management and/or restoration projects. Utilization of any and all rights derived under this lease by the mineral lessee, its agents, successors or assigns, shall not interfere with nor hinder the reasonable surface use by the Department of Natural Resources, its Offices or Commissions, as herein above reserved.

Applicant: MIDNITE ENERGY, INC.

Bidder	Cash Payment	Price/Acre	Rental	Oil	Gas	Other

Legend

- 22010005
- Wildlife
- Counties

VERMILION

CAMERON

P.O.B.

T15S - R2W

T16S - R2W

DYSON BAYOU

ROCKEFELLER WILDLIFE REFUGE

0 2,500 Feet

