

TRACT 45527 - Bossier and Caddo Parishes, Louisiana

All of the lands now or formerly constituting the beds and bottoms of all water bodies of every nature and description as to which title is vested in the State of Louisiana, together with all islands arising therein and other lands formed by accretion or by reliction, where allowed by law, excepting tax adjudicated lands, and not presently under mineral lease on May 11, 2022, situated in Bossier and Caddo Parishes, Louisiana, and more particularly described as follows: Beginning at a point on the southern side of State Lease No. 19349, as amended having Coordinates of X = 1,640,670.56 and Y = 641,466.53; thence South 89 degrees 21 minutes 45 seconds East 5,057.92 feet along its southern boundary to a point on the West boundary of State Lease No. 20881 having Coordinates of X = 1,645,728.17 and Y = 641,410.25; thence South 5,279.14 feet along the boundary of said State Lease No. 20881 to a point having Coordinates of X = 1,645,728.17 and Y = 636,131.11; thence North 89 degrees 24 minutes 03 seconds West 2,428.30 feet to a point on the East boundary of State Lease No. 11155, as amended having Coordinates of X = 1,643,300.00 and Y = 636,156.50; thence along the boundary of said State Lease No. 11155 the following courses: North 2,643.50 feet to a point having Coordinates of X = 1,643,300.00 and Y = 638,800.00, West approximately 859 feet, Southerly, Westerly and Northerly approximately 5,412 feet and West approximately 368 feet to a point on the eastern side of said State Lease No. 19349 having Coordinates of X = 1,640,676.81 and Y = 638,800.00; thence North 00 degrees 08 minutes 03 seconds West 2,666.54 feet along said eastern boundary to the point of beginning containing approximately **14.67 acres**, all as more particularly outlined on a plat on file in the Office of Mineral Resources, Department of Natural Resources. All bearings, distances and coordinates are based on Louisiana Coordinate System of 1927, (North or South Zone), where applicable.

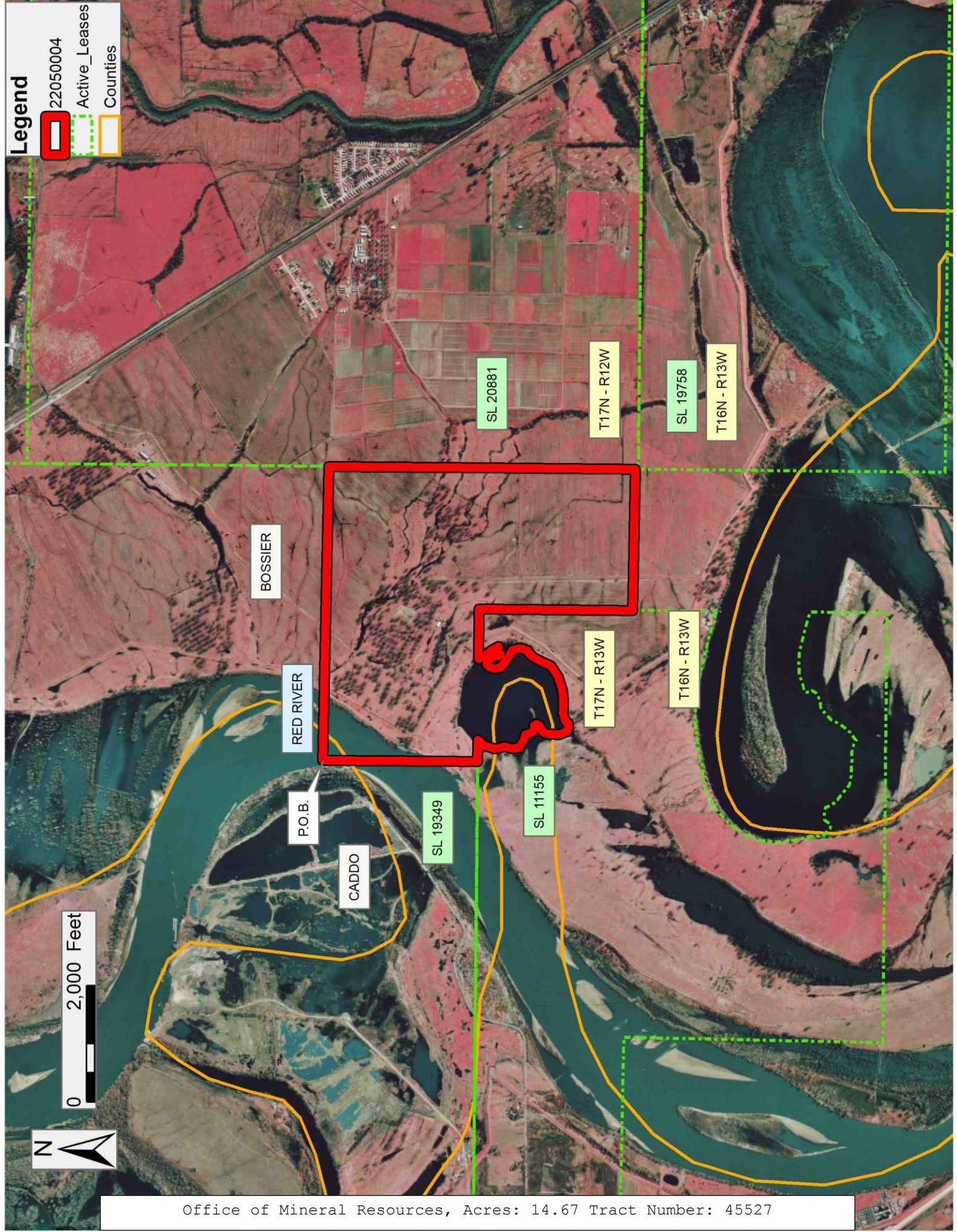
NOTE: The above description of the Tract nominated for lease has been provided and corrected, where required, exclusively by the nomination party. Any mineral lease selected from this Tract and awarded by the Louisiana State Mineral and Energy Board shall be without warranty of any kind, either express, implied, or statutory, including, but not limited to, the implied warranties of merchantability and fitness for a particular purpose. Should the mineral lease awarded by the Louisiana State Mineral and Energy Board be subsequently modified, cancelled or abrogated due to the existence of conflicting leases, operating agreements, private claims or other future obligations or conditions which may affect all or any portion of the leased Tract, it shall not relieve the Lessee of the obligation to pay any bonus due thereon to the Louisiana State Mineral and Energy Board, nor shall the Louisiana State Mineral and Energy Board be obligated to refund any consideration paid by the Lessor prior to such modification, cancellation, or abrogation, including, but not limited to, bonuses, rentals and royalties.

Applicant: CYPRESS ENERGY CORPORATION

Bidder	Cash Payment	Price/Acre	Rental	Oil	Gas	Other

Legend

- 22050004
- Active_Leases
- Counties



Office of Mineral Resources, Acres: 14.67 Tract Number: 45527

TRACT 45528 - Vermilion Parish, Louisiana

All of the lands now or formerly constituting the beds and bottoms of all water bodies of every nature and description as to which title is vested in the State of Louisiana, together with all islands arising therein and other lands formed by accretion or by reliction, where allowed by law, excepting tax adjudicated lands, and not presently under mineral lease on May 11, 2022, situated in Vermilion Parish, Louisiana, and more particularly described as follows: Beginning at a point having Coordinates of X = 1,721,172.41 and Y = 331,844.00; thence North 65 degrees 01 minute 16 seconds East 17,507.23 feet to a point having Coordinates of X = 1,737,042.09 and Y = 339,237.00; thence South 5,861.24 feet to a point on the Louisiana Coastline, as decreed by the Supreme Court of the United States, as determined by a Special Master appointed therein, in litigation styled *United States v. State of Louisiana et al No. 9 Original*, in 1975, having Coordinates of X = 1,737,042.09 and Y = 333,375.76; thence along the boundary of said Coastline the following courses: Southwesterly on a straight line to a point having Coordinates of X = 1,735,850 and Y = 333,066, Southwesterly on a straight line to a point having Coordinates of X = 1,730,831 and Y = 330,886, Southwesterly on a straight line to a point having Coordinates of X = 1,726,542 and Y = 329,268, Southwesterly on a straight line to a point having Coordinates of X = 1,724,713 and Y = 328,326, Southwesterly on a straight line to a point having Coordinates of X = 1,722,884 and Y = 327,774, Southwesterly on a straight line to a point having Coordinates of X = 1,721,682 and Y = 327,214, and Southwesterly on a straight line to a point having Coordinates of X = 1,721,172.41 and Y = 326,945.66; thence North 4,898.34 feet to the point of beginning, containing approximately **195 acres**, all as more particularly outlined on a plat on file in the Office of Mineral Resources, Department of Natural Resources. All bearings, distances and coordinates are based on Louisiana Coordinate System of 1927, (North or South Zone), where applicable.

NOTE: The above description of the Tract nominated for lease has been provided and corrected, where required, exclusively by the nomination party. Any mineral lease selected from this Tract and awarded by the Louisiana State Mineral and Energy Board shall be without warranty of any kind, either express, implied, or statutory, including, but not limited to, the implied warranties of merchantability and fitness for a particular purpose. Should the mineral lease awarded by the Louisiana State Mineral and Energy Board be subsequently modified, cancelled or abrogated due to the existence of conflicting leases, operating agreements, private claims or other future obligations or conditions which may affect all or any portion of the leased Tract, it shall not relieve the Lessee of the obligation to pay any bonus due thereon to the Louisiana State Mineral and Energy Board, nor shall the Louisiana State Mineral and Energy Board be obligated to refund any consideration paid by the Lessor prior to such modification, cancellation, or abrogation, including, but not limited to, bonuses, rentals and royalties.

NOTE: The State of Louisiana does hereby reserve, and this lease shall be subject to, the imprescriptible right of surface use in the nature of a servitude in favor of the Department of Natural Resources, including its

Offices and Commissions, for the sole purpose of implementing, constructing, servicing and maintaining approved coastal zone management and/or restoration projects. Utilization of any and all rights derived under this lease by the mineral lessee, its agents, successors or assigns, shall not interfere with nor hinder the reasonable surface use by the Department of Natural Resources, its Offices or Commissions, as herein above reserved.

Applicant: WOODLAND PETROLEUM CORPORATION

Bidder	Cash Payment	Price/Acre	Rental	Oil	Gas	Other

Legend



0 2,000 Feet



T16S - R2E

T17S - R2E

T16S - R3E

T17S - R3E

VERMILION

P.O.B.

SM0292

BAY MARCHAND AREA

VR0010

VERMILION AREA

GULF OF MEXICO

VR0009

TRACT 45529 - Vermilion Parish, Louisiana

All of the lands now or formerly constituting the beds and bottoms of all water bodies of every nature and description as to which title is vested in the State of Louisiana, together with all islands arising therein and other lands formed by accretion or by reliction, where allowed by law, excepting tax adjudicated lands, and not presently under mineral lease on May 11, 2022, situated in Vermilion Parish, Louisiana, and more particularly described as follows: Beginning at a point having Coordinates of X = 1,706,414.36 and Y = 323,070.00; thence North 59 degrees 16 minutes 03 seconds East 17,169.25 feet to a point having Coordinates of X = 1,721,172.41 and Y = 331,844.00; thence South 4,898.34 feet to a point on the Louisiana Coastline, as decreed by the Supreme Court of the United States, as determined by a Special Master appointed therein, in litigation styled *United States v. State of Louisiana et al No. 9 Original*, in 1975, having Coordinates of X = 1,721,172.41 and Y = 326,945.66; thence along the boundary of said Coastline the following courses: Southwesterly on a straight line to a point having Coordinates of X = 1,720,140 and Y = 326,402, Southwesterly on a straight line to a point having Coordinates of X = 1,717,114 and Y = 324,303, Southwesterly on a straight line to a point having Coordinates of X = 1,711,532 and Y = 320,881, Southwesterly on a straight line to a point having Coordinates of X = 1,709,968 and Y = 319,818, Southwesterly on a straight line to a point having Coordinates of X = 1,708,756 and Y = 318,661, Southwesterly on a straight line to a point having Coordinates of X = 1,706,790 and Y = 317,870, and Southwesterly on a straight line to a point having Coordinates of X = 1,706,414.36 and Y = 317,770.27; thence North 5,299.73 feet to the point of beginning, containing approximately **374 acres**, all as more particularly outlined on a plat on file in the Office of Mineral Resources, Department of Natural Resources. All bearings, distances and coordinates are based on Louisiana Coordinate System of 1927, (North or South Zone), where applicable.

NOTE: The above description of the Tract nominated for lease has been provided and corrected, where required, exclusively by the nomination party. Any mineral lease selected from this Tract and awarded by the Louisiana State Mineral and Energy Board shall be without warranty of any kind, either express, implied, or statutory, including, but not limited to, the implied warranties of merchantability and fitness for a particular purpose. Should the mineral lease awarded by the Louisiana State Mineral and Energy Board be subsequently modified, cancelled or abrogated due to the existence of conflicting leases, operating agreements, private claims or other future obligations or conditions which may affect all or any portion of the leased Tract, it shall not relieve the Lessee of the obligation to pay any bonus due thereon to the Louisiana State Mineral and Energy Board, nor shall the Louisiana State Mineral and Energy Board be obligated to refund any consideration paid by the Lessor prior to such modification, cancellation, or abrogation, including, but not limited to, bonuses, rentals and royalties.

NOTE: The State of Louisiana does hereby reserve, and this lease shall be subject to, the imprescriptible right of surface use in the nature of a servitude in favor of the Department of Natural Resources, including its

Offices and Commissions, for the sole purpose of implementing, constructing, servicing and maintaining approved coastal zone management and/or restoration projects. Utilization of any and all rights derived under this lease by the mineral lessee, its agents, successors or assigns, shall not interfere with nor hinder the reasonable surface use by the Department of Natural Resources, its Offices or Commissions, as herein above reserved.

Applicant: WOODLAND PETROLEUM CORPORATION

Bidder	Cash Payment	Price/Acre	Rental	Oil	Gas	Other

Legend

22050012



Blocks



0 2,000 Feet

VERMILION

T17S - R2E

P.O.B.

GULF OF MEXICO

VR0009

VERMILION AREA

VR0012

VR0008

TRACT 45530 - Vermilion Parish, Louisiana

All of the lands now or formerly constituting the beds and bottoms of all water bodies of every nature and description as to which title is vested in the State of Louisiana, together with all islands arising therein and other lands formed by accretion or by reliction, where allowed by law, excepting tax adjudicated lands, and not presently under mineral lease on May 11, 2022, situated in Vermilion Parish, Louisiana, and more particularly described as follows: Beginning at a point having Coordinates of X = 1,676,898.27 and Y = 323,070.00; thence East 14,758.05 feet to a point having Coordinates of X = 1,691,656.32 and Y = 323,070.00; thence South 7,016.59 feet to a point on the Louisiana Coastline, as decreed by the Supreme Court of the United States, as determined by a Special Master appointed therein, in litigation styled *United States v. State of Louisiana et al No. 9 Original*, in 1975, having Coordinates of X = 1,691,656.32 and Y = 316,053.41; thence along the boundary of said Coastline the following courses: Northwesterly on a straight line to a point having Coordinates of X = 1,689,980 and Y = 316,170, Northwesterly on a straight line to a point having Coordinates of X = 1,687,270 and Y = 316,510, Northwesterly on a straight line to a point having Coordinates of X = 1,678,545 and Y = 318,408, and Northwesterly on a straight line to a point having Coordinates of X = 1,676,898.27 and Y = 318,813.64; thence North 4,256.36 feet to the point of beginning, containing approximately **300 acres**, all as more particularly outlined on a plat on file in the Office of Mineral Resources, Department of Natural Resources. All bearings, distances and coordinates are based on Louisiana Coordinate System of 1927, (North or South Zone), where applicable.

NOTE: The above description of the Tract nominated for lease has been provided and corrected, where required, exclusively by the nomination party. Any mineral lease selected from this Tract and awarded by the Louisiana State Mineral and Energy Board shall be without warranty of any kind, either express, implied, or statutory, including, but not limited to, the implied warranties of merchantability and fitness for a particular purpose. Should the mineral lease awarded by the Louisiana State Mineral and Energy Board be subsequently modified, cancelled or abrogated due to the existence of conflicting leases, operating agreements, private claims or other future obligations or conditions which may affect all or any portion of the leased Tract, it shall not relieve the Lessee of the obligation to pay any bonus due thereon to the Louisiana State Mineral and Energy Board, nor shall the Louisiana State Mineral and Energy Board be obligated to refund any consideration paid by the Lessor prior to such modification, cancellation, or abrogation, including, but not limited to, bonuses, rentals and royalties.

NOTE: The State of Louisiana does hereby reserve, and this lease shall be subject to, the imprescriptible right of surface use in the nature of a servitude in favor of the Department of Natural Resources, including its Offices and Commissions, for the sole purpose of implementing, constructing, servicing and maintaining approved coastal zone management and/or restoration projects. Utilization of any and all rights derived under this lease by the mineral lessee, its agents, successors or assigns, shall not

interfere with nor hinder the reasonable surface use by the Department of Natural Resources, its Offices or Commissions, as herein above reserved.

Applicant: WOODLAND PETROLEUM CORPORATION

Bidder	Cash Payment	Price/Acre	Rental	Oil	Gas	Other

Legend

22050006



Blocks



T17S - R2E

T17S - R1E

FRESHWATER BAYOU CANAL

VERMILION

VR0008

GULF OF MEXICO

VR0007

VERMILION AREA

VR0006

P.O.B.

0 2,000 Feet



TRACT 45531 - Vermilion Parish, Louisiana

All of the lands now or formerly constituting the beds and bottoms of all water bodies of every nature and description as to which title is vested in the State of Louisiana, together with all islands arising therein and other lands formed by accretion or by reliction, where allowed by law, excepting tax adjudicated lands, and not presently under mineral lease on May 11, 2022, situated in Vermilion Parish, Louisiana, and more particularly described as follows: Beginning at a point having Coordinates of X = 1,691,656.32 and Y = 323,070.00; thence East 14,758.04 feet to a point having Coordinates of X = 1,706,414.36 and Y = 323,070.00; thence South 5,299.73 feet to a point on the Louisiana Coastline, as decreed by the Supreme Court of the United States, as determined by a Special Master appointed therein, in litigation styled *United States v. State of Louisiana et al No. 9 Original*, in 1975, having Coordinates of X = 1,706,414.36 and Y = 317,770.27; thence along the boundary of said Coastline the following courses: Southwesterly on a straight line to a point having Coordinates of X = 1,703,080 and Y = 316,885, Southwesterly on a straight line to a point having Coordinates of X = 1,700,680 and Y = 316,390, Southwesterly on a straight line to a point having Coordinates of X = 1,696,359 and Y = 315,965, Northwesterly on a straight line to a point having Coordinates of X = 1,692,568 and Y = 315,990, and Northwesterly on a straight line to a point having Coordinates of X = 1,691,656.32 and Y = 316,053.41; thence North 7,016.59 feet to the point of beginning, containing approximately **257 acres**, all as more particularly outlined on a plat on file in the Office of Mineral Resources, Department of Natural Resources. All bearings, distances and coordinates are based on Louisiana Coordinate System of 1927, (North or South Zone), where applicable.

NOTE: The above description of the Tract nominated for lease has been provided and corrected, where required, exclusively by the nomination party. Any mineral lease selected from this Tract and awarded by the Louisiana State Mineral and Energy Board shall be without warranty of any kind, either express, implied, or statutory, including, but not limited to, the implied warranties of merchantability and fitness for a particular purpose. Should the mineral lease awarded by the Louisiana State Mineral and Energy Board be subsequently modified, cancelled or abrogated due to the existence of conflicting leases, operating agreements, private claims or other future obligations or conditions which may affect all or any portion of the leased Tract, it shall not relieve the Lessee of the obligation to pay any bonus due thereon to the Louisiana State Mineral and Energy Board, nor shall the Louisiana State Mineral and Energy Board be obligated to refund any consideration paid by the Lessor prior to such modification, cancellation, or abrogation, including, but not limited to, bonuses, rentals and royalties.

NOTE: The State of Louisiana does hereby reserve, and this lease shall be subject to, the imprescriptible right of surface use in the nature of a servitude in favor of the Department of Natural Resources, including its Offices and Commissions, for the sole purpose of implementing, constructing, servicing and maintaining approved coastal zone management and/or restoration projects. Utilization of any and all rights derived under this

lease by the mineral lessee, its agents, successors or assigns, shall not interfere with nor hinder the reasonable surface use by the Department of Natural Resources, its Offices or Commissions, as herein above reserved.

Applicant: WOODLAND PETROLEUM CORPORATION

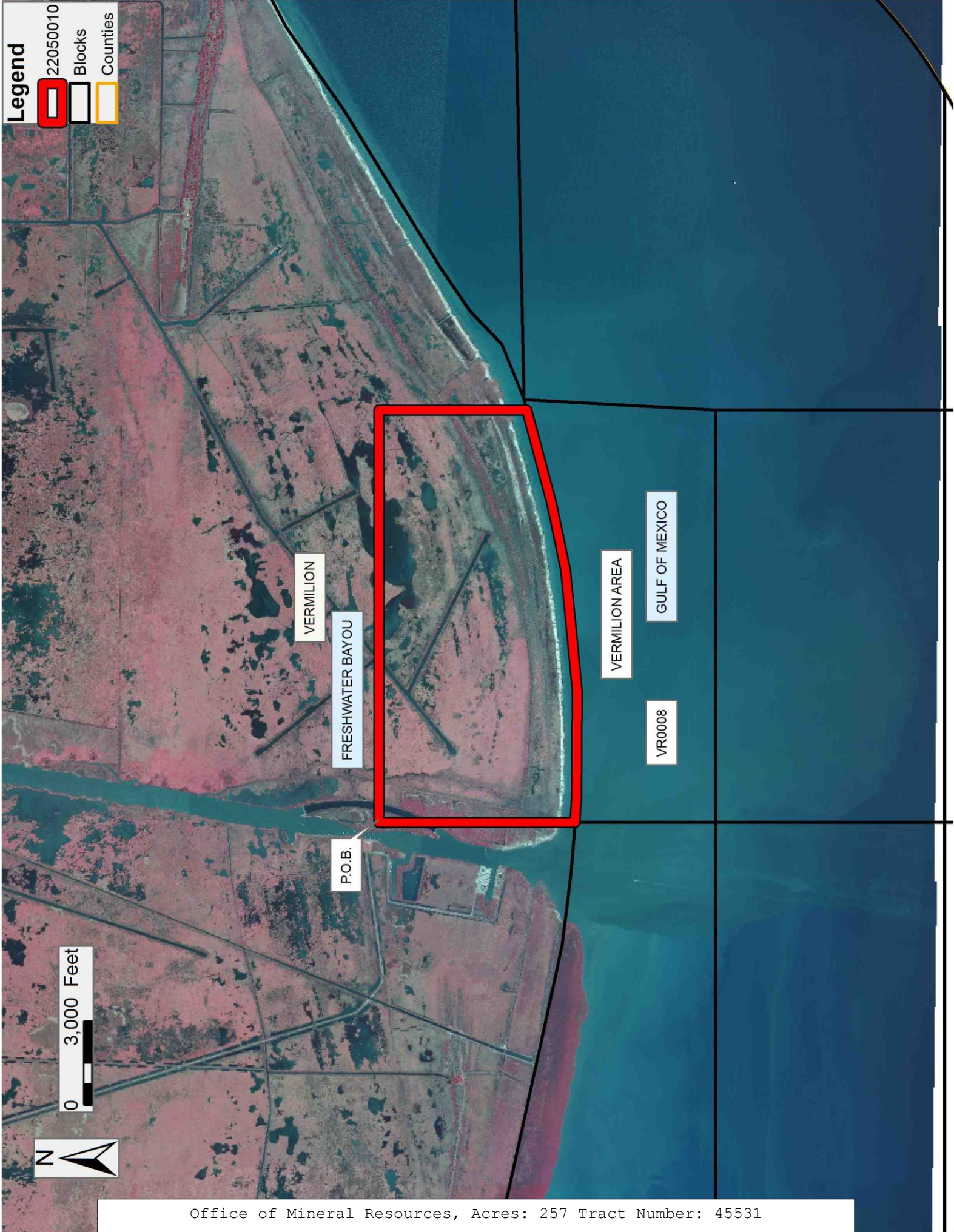
Bidder	Cash Payment	Price/Acre	Rental	Oil	Gas	Other

Legend

- 22050010
- Blocks
- Counties



0 3,000 Feet



VERMILION

FRESHWATER BAYOU

P.O.B.

VERMILION AREA

VR0008

GULF OF MEXICO