

TRACT 45532 - Caddo Parish, Louisiana

A certain Tract of land, excluding the beds and bottoms of all navigable waters, belonging to and not presently under mineral lease from Industrial Development Board Of The City Of Shreveport, Inc. on May 11, 2022, being more fully described as follows: A 1/2 interest into that certain tract or parcel of land being the Northeast Quarter of the Northwest Quarter (NE/4 of NW/4) of Section 13, Township 18 North, Range 15 West, Caddo Parish, Louisiana, and being more particularly described in that certain Deed recorded February 4, 1986, under Entry No. 1079281, in the Conveyance records of the Clerk of Courts office, Caddo Parish, Louisiana, containing **40.00 acres**, more or less, all as more particularly outlined on a plat on file in the Office of Mineral Resources, Department of Natural Resources. The description is based on information provided by the State Agency regarding location and ownership of surface and mineral rights. All bearings, distances and coordinates, if applicable, are based on Louisiana Coordinate System of 1927, (North or South Zone).

NOTE: The above description of the Tract nominated for lease has been provided and corrected, where required, exclusively by the nomination party. Any mineral lease selected from this Tract and awarded by the Louisiana State Mineral and Energy Board shall be without warranty of any kind, either express, implied, or statutory, including, but not limited to, the implied warranties of merchantability and fitness for a particular purpose. Should the mineral lease awarded by the Louisiana State Mineral and Energy Board be subsequently modified, cancelled or abrogated due to the existence of conflicting leases, operating agreements, private claims or other future obligations or conditions which may affect all or any portion of the leased Tract, it shall not relieve the Lessee of the obligation to pay any bonus due thereon to the Louisiana State Mineral and Energy Board, nor shall the Louisiana State Mineral and Energy Board be obligated to refund any consideration paid by the Lessor prior to such modification, cancellation, or abrogation, including, but not limited to, bonuses, rentals and royalties.

NOTE: Lessee, it's successors or assigns, may produce oil, gas and other minerals from the leased premises by drilling from a surface location on other lands, but notwithstanding any other provision of this lease, Lessee, it's successors or assigns, shall not use the surface of the Lessor's property for drilling or any other operations without prior written permission of Lessor, which permission may be withheld at Lessor's discretion.

NOTE: Notwithstanding anything to the contrary herein contained, at the end of the primary term or any extension thereof by operations, if the Commission of Conservation of the State of Louisiana establishes a drilling unit which included a part of the land herein leased, the production of oil, gas and other minerals from such unit shall maintain this lease in full force and effect only as to such portions of the leased land embraced in said pooled unit; and this lease shall expire as to that part of the land herein leased not included in such unit; and lessee, its successors and assigns agrees to

relinquish by formal instrument any portion of the leased land not included in a unit created by the Commission of Conservation while this lease is in effect.

NOTE: Upon the expiration of the primary term hereof or any extension thereof by operations, this lease shall automatically terminate and be of no further force or effect except as to all that part of the leased premises then included within the geographical boundaries of a producing unit duly established by governmental agency or authority having jurisdiction, from the surface of the earth to a depth of one hundred (100) feet below the deepest depth from which any well commenced during the primary term hereof on the leased premises or on lands pooled therewith is completed and from which there is production in paying quantities, such depth determination to be made on a unit by unit basis. In the absence of units so established, this lease shall terminate except as to forty (40) acres around each producing oil well and one hundred sixty (160) acres around each producing or shut-in gas well located on the leased premises, in as near the form of a square as is practicable, from the surface of the earth down to a depth of 100 feet below the deepest depth from which said well or wells are completed and from which there is production in paying quantities, such depth determination to be made on a well by well basis.

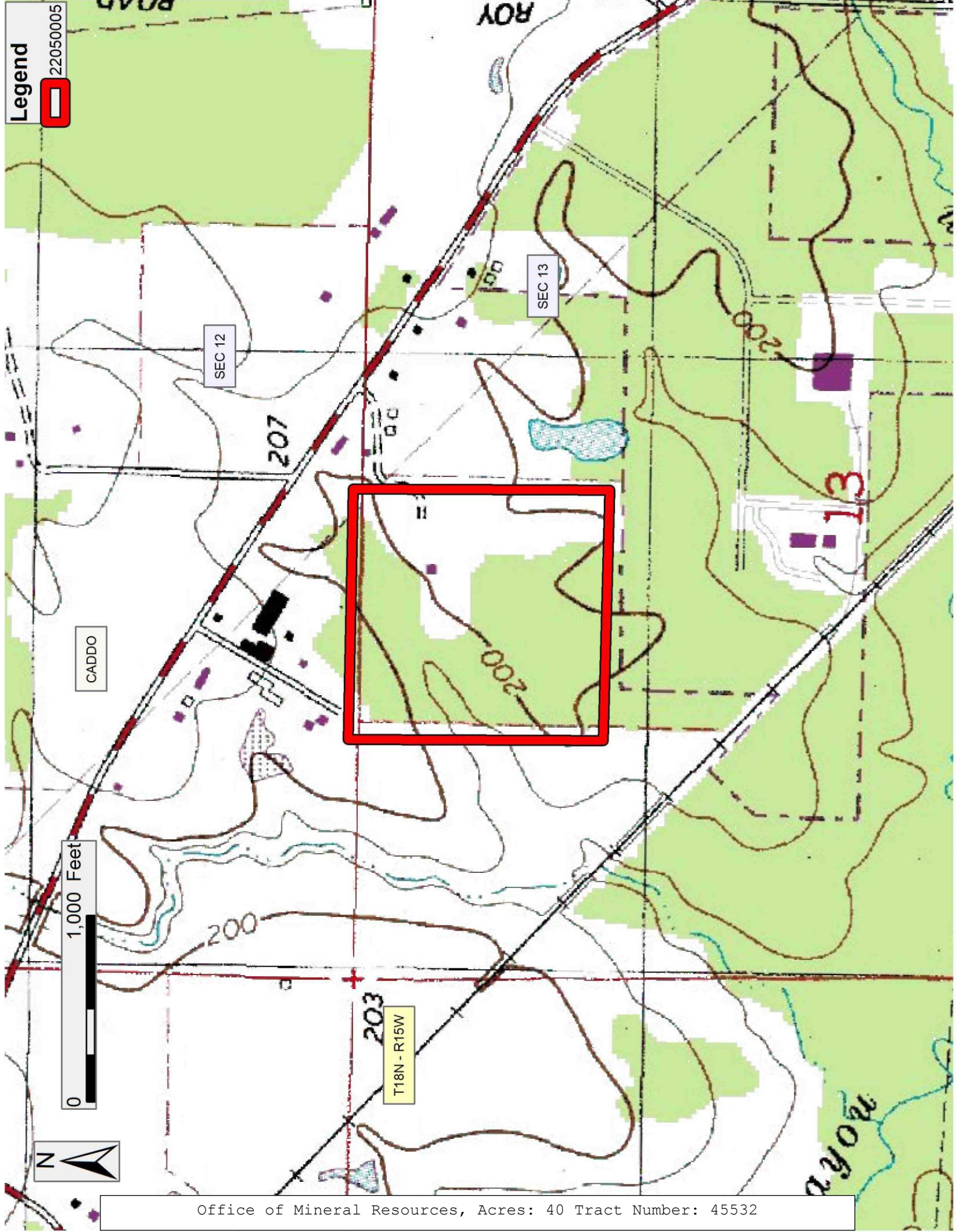
NOTE: The Industrial Development Board of the City of Shreveport, Inc. will require a minimum bonus of \$1,750.00 per acre and a minimum royalty of not less than 1/5th or 20%.

Applicant: USG PROPERTIES HAYNESVILLE LLC to Agency and by Resolution from the Industrial Development Board Of The City Of Shreveport, Inc. authorizing the Mineral Board to act in its behalf

Bidder	Cash Payment	Price/Acre	Rental	Oil	Gas	Other

Legend

22050005



CADDO

SEC 12

SEC 13

207

200

200

13



203

T18N - R15W

Office of Mineral Resources, Acres: 40 Tract Number: 45532

TRACT 45533 - Caddo Parish, Louisiana

A certain Tract of land, excluding the beds and bottoms of all navigable waters, belonging to and not presently under mineral lease from Caddo Parish Commission on May 11, 2022, being more fully described as follows: Those certain adjudicated properties located in Section 17, Township 18 North, Range 14 West described as W. 70 Ft of E. 220 Ft Of N. 77.57 Ft Of lot 349, Jones-Mabry Sub., Unit 4, Geo # 181417-001-0379; Lot 3, Joseph Redd Sun, Geo # 181417-003-0003; W. 50 Ft Of E. 115 Ft Of N. 120 Ft Of Lot 375, Jones-Mabry Sub Unit 6, Geo # 181417-005-0393; W/2 Of Lot 422, Jones-Mabry Sub, Unit #7, Geo # 181417-010-0009; E/2 Of Lot 390, Jones-Mabry Sub Unit 7, Geo # 181417-010-0011; N. 65 Ft Of S. 135 Ft Of Lot 398, Jones-Mabry sub., Unit #7, Less R/W, Geo # 181417-010-0014; South 45 Ft. Of North 135 Ft. Of Lot 418, Jones-Mabry Sub., Unit 7, Less R/W, Geo # 181417-010-0027; South 45 Ft. Of North 135 Ft. Of Lot 418, Jones-Mabry Sub., Unit 7, Less R/W, Geo # 181417-010-0027; N. 90 Ft Of Lot 418, Jones-Mabry Sub Unit 7 less R/W, Geo # 181417-010-0036; W. 66 Ft. Of E. 132 Ft. Of N. 80 Ft. Of Lot 412, Jones Mabry Subd., Unit #7, Geo # 181417-010-0087; Lot 416 Jones-Mabry #7, Geo # 181417-010-0416; Lot 421, Jones-Mabry Sub., Unit #7, Geo # 181417-010-0421; Lot C, Reed Subd, Geo # 181417-011-0003; Lot E, Reed Subd., Geo # 181417-011-0005; Lot F, Reed Sub., Geo # 181417-011-0006; Lot G, Reed Subd, Geo # 181417-011-0007; Lot I, Reed Subd, Geo # 181417-011-0009; Lot J, Reed Subd., Geo # 181417-011-0010; Lot K, Reed Subd, Geo # 181417-011-0011; Lot L, Reed Subd., Geo # 181417-011-0012; S/2 Of Lot 457, Jones-Mabry Subd., Unit 7, Geo # 181417-013-0469; Lot 432, Jones-Mabry Sub. 7, Less west 70 Ft. Of South 310 Ft. Thereof, Geo # 181417-013-0479; S/2 Of W. 40 Ft. Of E/2 Of Lot 429, Jones-Mabry sub., Unit #7, Geo # 181417-013-0532; W. 10 Ft. Of E. 40 Ft. Of N. 10 Ft. Of S. 140 Ft of Lot 456, Jones Mabry Subd. Unit #7, Geo 181417-013-0545; S. 40 Ft Of N. 120 Ft Of E. 119.285 Ft Of Lot 439, Jones Mabry Sub, Unit 7, Geo # 181417-013-0574; S. 35 Ft. Of The N. 80 Ft. Of The E. 119.285 Ft. Of Lot 439, Jones-Mabry Subd.unit #7, Geo # 181417-013-0581; S. 17.27 Ft. Of N. 117.27 Ft. Of W. 119.285 Ft. of Lot 439, Jones Mabry Subd., Unit No. 7, Geo # 181417-013-0584; N. 37 Ft. Of S. 79 Ft. Of E. 119.285 Ft. of Lot 439, Jones-Mabry Subd., Unit No. 7, Geo # 181417-013-0588; N. 72.78 Ft. Of S. 151.78 Ft. Of E. 119.285 Ft. of Lot 439, Jones-Mabry Subd., Unit No. 7, Geo # 181417-013-0590; Lot 6, Mary Joe Place Subd., Geo # 181417-016-0006; N. 37.6 Ft Of S. 46.3 Ft Of Lot 9, 181417-16-21 Mary Joe Place, Geo # 181417-016-0021; West 35.23 Ft. Of North 140.75 Ft. Of Lot 12, van Sub, Geo # 181417-017-0025; Lot 7, Knox Subd, Geo # 181417-019-0007; Lot 10, Knox Sub, Geo # 181417-019-0010; N. 6 Ft Of E. 15 Ft Of Lot 1, Knox Sub, Geo # 181417-019-0012; North 20.75 Ft. Of East 15.4 Ft. Of Lot A, Alex Lee Park, Geo # 181417-024-0004; Lot 1-A, Alex Lee Park, Unit #1-A, Geo # 181417-026-0001; Lot 3-A, Alex Lee Park, Unit #1-A, Geo # 181417-026-0003; Lot 4-A, Alex Lee Park, Unit #1-A, Geo # 181417-026-0004; Lot 5-A, Alex Lee Park, Unit #1-A, Geo # 181417-026-0005; Lot 7-A, Alex Lee Park, Unit #1-A, Geo # 181417-026-0007; Lot 9-A, Alex Lee Park Sub, Unit #1-A, Geo # 181417-026-0009; Lot 10-A, Alex Lee Park, Unit #1-A, Geo # 181417-026-0010; Lot 11-A, Alex Lee Park, Unit #1-A, Geo # 181417-026-0011; Lot 16-A, Alex Lee Park, Unit #1-A, Geo # 181417-026-0016; Lot 17-A, Alex Lee Park, Unit #1-A, Geo # 181417-026-0017; E. 0.97 Acre Of Lot 601, Jones-Mabry sub., Unit 10, Geo #

181417-028-0625; E/2 Of Lot 607, Jones-Mabry Sub., Unit #10, Geo # 181417-028-0642; E. 59.65 Ft. Of Lot 606 & W/2 Of Lot 607, Jones-Mabry, Sub., Unit #10, Geo # 181417-028-0643; South 65 Ft Of E. 1 Ac Of Lot 618, Jones-Mabry Sub 10, Geo # 181417-028-0651; W. 60 Ft Of E/2 Of Lot 596, Jones-Mabry Subd., unit #10., Geo # 181417-028-0661; E/2 Of Lot 596, Less W. 60 Ft. Thereof, Jones Mabry Subd., Unit 10, Geo # 181417-028-0662; N. 1 Acre Of Lot 614, Jones-Mabry Sub, Unit 10, Geo # 181417-028-0672; Lot 631 Jones Mabry Sub 10, Geo # 181417-029-0631; S. 50 Ft Of N. 250 Ft Of Lot 624, Jones-Mabry Sub., Unit 10, Geo # 181417-029-0648; N. 200 Ft Of Lot 624 & N. 150 Ft Of S. 356.9 Ft of Lot 624, Jones-Mabry Sub., Unit #10, Geo # 181417-029-0649; N. 50 Ft Of S. 106.9 Ft Of Lot 624, Jones-Mabry Sub., Unit 10, Geo # 181417-029-0658; S. 56.9 Ft. & N. 100 Ft. Of The S. 206.9 Ft. Of lot 624, Jones-Mabry Sub., Unit 10, Geo # 181417-029-0659; 1 Ac. W/2 Of Lot 643, Jones-Mabry Sub 10, Less s. 5 Ft For St, Geo # 181417-029-0664; The N. 89.57 Ft. Of S. 179.14 Ft. Of Lot 641, jones-Mabry Subd., Unit #10, Geo # 181417-029-0667; Lot 647, Jones-Mabry Sub., Unit 10, Geo # 181417-030-0647; W. 1/2 Of Lot 659, Jones-Mabry Sub, Unit 10, Geo # 181417-030-0668; W/2 Of Lot 661, Less Drainage Ditch, Jones-Mabry Subd., Unit 10, Geo # 181417-030-0674; W/2 Of Lot 646 Jones Mabry Sub., Unit #10, Geo # 181417-030-0678; South 40 Ft. Of North 80 Ft. Of E/2 Of Lot 646, jones Mabry Sub., Unit #10, Geo # 181417-030-0680; South 45 Ft. Of North 315 Ft. Of Lot 664, Jones-Mabry Sub., Unit 10, Geo # 181417-030-0691; E/2 Lot 648 Jones-Mabry Subd. 10, Geo # 181417-030-0696, E. 72.15 Ft. Of N. 151.19 Ft. Of S. 302.38 Ft. of Lot 660, Jones Mabry Sub., Unit 10, Less drain Eas., Geo # 181417-030-0719; W. 72.16 Ft. Of S. 151.19 Ft. Of Lot 660, jones Mabry Sub., Unit #10, Geo # 181417-030-0721; E. 72.15 Ft. Of N. 151.20 Ft. Of S. 453.58 Ft. of Lot 660, Jones Mabry Sub., Unit #10, Geo # 181417-030-0722; N. 151.19 Ft. Of S. 302.38 Ft. Of W. 72.16 Ft. of Lot 660, Jones Mabry Sub, Unit 10, Geo # 181417-030-0723, 0.46 Ac.-M/L-E. 44.44 Ft. Of Lot 657, Less N. 150 Ft. Thereof, Jones-Mabry Sub., Unit #10, Geo # 181417-030-0725, All That Part Of Lot 662, Jones-Mabry unit No. 10, Lying S. Of A Drainage Ditch, Geo # 181417-030-0741; Lot A, Mims Sub, Geo # 181417-031-0001; Lot B, Mims Sub, Geo # 181417-031-0002; Lot C, Mims Sub, Geo # 181417-031-0003; Lot D, Mims Sub, Geo # 181417-031-0004; Lot E, Mims Sub, Geo # 181417-031-0005; Lot 1, Mary Pearl Subd., Geo # 181417-033-0001; Lot 2, Mary Pearl Subd, Geo # 181417-033-0002; Lots 3, 4, 5, 6, 7, 8, Mary Pearl Subd., Geo # 181417-033-0003; Lot 9, Mary Pearl Subd, Geo # 181417-033-0009; Lot 10, Mary Pearl Subd., Geo # 181417-033-0010; Lot 7, Peach Tree Subd., Geo # 181417-040-0007; Lot 1, Heritage Sub, Geo # 181417-042-0001; Lot 3, W. W. Jones Sub., Unit #1, less Drainage Ditch, Geo # 181417-043-0003; Inst. # 2529592 - W/2 Of Lot 8, W. W. Jones Sub., Unit #1, Less drainage Ditch R/W, Geo # 181417-043-0028; E. 131.94 Ft Of Lot 9, Less Drainage Ditch R/W, w. W. Jones Subd., Unit No. 1, Geo # 181417-043-0031; North 200.39 Ft. Of W/2 Of Lot 7, W. W. Jones Subd., Unit No. 1, Geo # 181417-043-0040; Lot 6, Less N. 50 Ft. Thereof, W. W. Jones Subd. unit No. 1, Less R/W, Geo # 181417-043-0044; Lot 6, Legardy Oaks Sub., Unit #1, Geo # 181417-045-0006; Lot C, Legardy Oaks, Unit #2, Geo # 181417-046-0003; Lot D, Legardy Oaks, Unit #2, Geo # 181417-046-0004; Lot 4, Legardy Hills Sub. Unit #1, Geo # 181417-047-0004; Lot 5, Legardy Hills Sub., Unit #1, Geo # 181417-047-0005; Lot 6, Legardy Hills Sub., Unit #1, Geo # 181417-047-0006; Lot 25, Legardy

Hills Sub, Unit 1., Geo # 181417-047-0025; Lot 32, Legardy Hills Subd., Unit 1, Geo # 181417-047-0032; Lot 33, Legardy Hills Subd., Unit 1, Geo # 181417-047-0033; Lot 53, Legardy Hills Sub., Unit 1, Geo # 181417-047-0053; Lot 55, Legardy Hills Subd., Unit 1, Geo # 181417-047-0055; Lot 58, Legardy Hills Sub., Unit 1, Geo # 181417-047-0058; Lot 61, Legardy Hills Sub., Unit 1, Geo # 181417-047-0061; Lot 67, Legardy Hills Subd Unit #1, Geo # 181417-047-0067; Lot 81, Legardy Hills Subd., Unit 1, Geo # 181417-047-0081; Lot 85, Legardy Hills Subd., Unit 1, Geo # 181417-047-0085; Lot 87, Legardy Hills Sub., Unit 1, Geo # 181417-047-0087; Lot B, Legardy Hills Park., Geo # 181417-048-0002; Lot 91, Legardy Hills Sub Unit 2, Geo # 181417-050-0091; Lot 93, Legardy Hills Subd., Unit 2, Geo # 181417-050-0093; Lot 101, Legardy Hills Subd., Unit 2, Geo # 181417-050-0101; Lot 102, Legardy Hills Subd., Unit 2, Geo # 181417-050-0102; Lot 112, Legardy Hills Subd., Unit #2, Geo # 181417-050-0112; Legardy Hills Sub lot 118, Geo # 181417-050-0118; Lot 124, Legardy Hills Subd., Unit 2, Geo # 181417-050-0124; Lot 129, Legardy Hills Subd., Unit 2, Geo # 181417-050-0129; Lot 1, Cooperville Subd., Unit 1, Geo # 181417-051-0001; Lot 2, Cooperville Subd, Unit #1, Geo # 181417-051-0002; Lot 15, Cooperville Subd., Unit 1, Geo # 181417-051-0015; Lot 18, Cooperville Subd., Unit 2, Geo # 181417-052-0018; Lot 20, Cooperville Subd., Unit 2, Geo # 181417-052-0020; Lot 21, Cooperville Subd., Unit 2, Geo # 181417-052-0021; Lot 28, Cooperville Subd. Unit #2, Geo # 181417-052-0028; Lot 29, Cooperville Subd., Unit 2, Geo # 181417-052-0029; Lot 30, Cooperville Subd., Unit 2, Geo # 181417-052-0030; Lot 58, Cooperville Subd., Unit 2, Geo # 181417-052-0058; Lot 59, Cooperville Subd., Unit 2, Geo # 181417-052-0059; Lot 64, Cooperville Subd., Unit 2, Geo # 181417-052-0064; Lot 65, Cooperville Subd., Unit 2, Geo # 181417-052-0065; Lot 66, Cooperville Subd., Unit 2, Geo # 181417-052-0066; Lot 67, Cooperville Subd., Unit 2, Geo # 181417-052-0067; Lot 72, Cooperville Subd., Unit #2., Geo # 181417-052-0072; Lot 107, Cooperville Subd., Unit 2, Geo # 181417-052-0107; Lot 109, Cooperville Subd., Unit 2, Geo # 181417-052-0109; Lot 114, Cooperville Subd., Unit 2, Geo # 181417-052-0114; Lot 115, Cooperville Subd., Unit 2, Geo # 181417-052-0115; Lot 116, Cooperville Subd., Unit 2, Geo # 181417-052-0116; Lot 117, Cooperville Subd., Unit 2, Geo # 181417-052-0117; Lot 118, Cooperville Subd., Unit 2, Geo # 181417-052-0118; Lot 119, Cooperville Subd., Unit 2, Geo # 181417-052-0119; Lot 120, Cooperville Subd., Unit 2, Geo # 181417-052-0120; Lot 34, Cooperville Subd., Unit 2, Geo # 181417-053-0034; Lot 36, Cooperville Sub., Unit #2, Geo # 181417-053-0036; Lot 37, Cooperville Subd., Unit 2, Geo # 181417-053-0037; Lot 38, Cooperville Subd., Unit 2, Geo # 181417-053-0038; Lot 39, Cooperville Subd., Unit 2, Geo # 181417-053-0039; Lot 94, Cooperville Subd., Unit 2, Geo # 181417-053-0094; Lot 95, Cooperville Subd., Unit 2, Geo # 181417-053-0095; Lot 96, Cooperville Subd., Unit 2, Geo # 181417-053-0096; Lot 158, Less R/W, Cooperville Sub., Unit 2, Geo # 181417-053-0158; Lot 159, Less R/W, Cooperville Sub., Unit 2, Geo # 181417-053-0159; Lot 160, Cooperville Subd., Unit 2, Geo # 181417-053-0160; Lot 162, Cooperville Subd., Unit 2, Geo # 181417-053-0162; Lot 165, Cooperville Subd., Unit 2, Geo # 181417-053-0165; Lot 166, Cooperville Subd., Unit 2, Geo # 181417-053-0166; Lot 167, Cooperville Subd., Unit 2, Geo # 181417-053-0167; Lot 169, Cooperville Subd., Unit 2, Geo # 181417-053-0169; Lot 171, Cooperville Sub., Unit #2, Geo # 181417-053-0171; Lot 172, Cooperville Sub Unit 2, Geo # 181417-053-0172; Lot

175, Cooperville Subd., Unit 2, Geo # 181417-053-0175; Lot 176, Cooperville Subd., Unit 2, Geo # 181417-053-0176; Lot 177, Cooperville Subd., Unit 2, Geo # 181417-053-0177; Lot 10, Legardy Village, Geo # 181417-057-0010; Lot 54, Legardy Village, Geo # 181417-057-0054; W. 65 Ft. Of E. 485 Ft. Of N. 77.57 Ft. Of lot 349, Jones-Mabry Sub., Unit 4, Geo # 181417-001-0383; Lot 352, Less W. 50 Ft. On N. 125 Ft. Thereof & less E. 125 Ft. Thereof, Jones-Mabry Subd. Unit #4, Geo # 181417-001-0401; W. 132 Ft Of S. 82.5 Ft Of N. 165 Ft Of lot 413, Jones-Mabry Sub., Unit #7, Geo # 181417-010-0044, S. 45 Ft Of N. 180 Ft Of Lot 418 Jones-Mabry sub., Unit #7, Less R/W, Geo # 181417-010-0052; S. 80 Ft. Of E/2 Of Lot 412, E/2 Of Lot 412, less N. 80 Ft...Of Lot 412, Jones-Mabry Subd., Unit 7, Geo # 181417-010-0098; 2.00 Acs- Lot 386, Jones-Mabry Sub, Unit 7 181417-10-386., Geo # 181417-010-0386; Lot 404, Jones-Mabry Sub, Unit # 7, Geo # 181417-010-0404; Lot D, Reed Sub, Geo # 181417-011-0004; Lot 458, Jones-Mabry Sub, Unit 7, Geo # 181417-013-0458; W. 70 Ft. Of S. 310 Ft. Of Lot 432, Jones-Mabry Sub, Unit 7, Geo # 181417-013-0478; North 44 Ft. Of South 263 Ft. Of West 1/2 Of Lot 442, Jones-Mabry Sub. 7, Geo # 181417-013-0515S. 52 Ft Of The N. 361.46 Ft Of Lot 456, Jones-Mabry Subd., Unit 7, Geo # 181417-013-0527; S. 51 Ft Of N. 102.46 Ft Of Lot 456, Unit #7, jones-Mabry Subd, Geo # 181417-013-0541; N. 41 Ft. Of S. 192.78 Ft. Of E. 119.285 Ft. Of lot 439, Jones-Mabry Subd., Unit No. 7, Geo # 181417-013-0589; S.31.44 Ft. Of N. 148.71 Ft. Of W. 119.285 Ft. of Lot 439, Jones-Mabry Subd., Unit #7, Geo # 181417-013-0592; Lots 9 Thru 13, Savoy Subd., Geo # 181417-014-0018; Lot 3, Knox Subd., Geo # 181417-019-0003; Lot 2, Norton Subd., Geo # 181417-020-0002; Lot 4, Norton Sub., Geo # 181417-020-0004; Lot 8, Norton Sub, Geo # 181417-020-0008; Lot 6-A, Alex Lee Park, Unit #1-A, Geo # 181417-026-0006; Lot 8-A, Alex Lee Park Sub, Unit #1-A, Geo # 181417-026-0008; E. 109.24 Ft Of W. 218.48 Ft Of Lot 606, Jones-Mabry Sub, Unit 10., Geo # 181417-028-0669; Lot 633, Jones-Mabry Sub., Unit # 10, Geo # 181417-029-0633; E/2 Of Lot 661, Less N. 150 Ft. Thereof, less R/W, Jones-Mabry Sub, Unit #10, Geo # 181417-030-0712; All That Part Of Lot 662, Jones-Mabry unit No. 10, Lying N. Of A Drainage Ditch, Geo # 181417-030-0740; Lot 2, Heritage Sub, Geo # 181417-042-0002; Lot 3, Heriatage Subd. 181417-42-3., Geo # 181417-042-0003; Lot 5, Heriatage Subd., Geo # 181417-042-0005; Lot 3, Reese Sub, Geo # 181417-044-0003; Lot 21, Legardy Hills Sub Unit 1, Geo # 181417-047-0021; Lot 23, Legardy Hills Sub Unit 1, Geo # 181417-047-0023; Nwly Portion Of Lot 52, Legardy Hills Sub., Unit #1, Measuring 55 Ft. On Street & 70.3 Ft. On rear, Geo # 181417-047-0091; Lot 3, Cooperville Subd., Unit 1, Geo # 181417-051-0003; Lot 31, Cooperville Subd., Unit 2, Geo # 181417-052-0031; Lot 42, Cooperville Subd., Unit 2, Geo # 181417-052-0042; Lot 43, Cooperville Subd., Unit 2, Geo # 181417-052-0043; Lot 47, Cooperville Subd., Unit 2, Geo # 181417-052-0047; Lot 48, Cooperville Subd., Unit 2, Geo # 181417-052-0048; Lot 98, Cooperville Sub., Unit 2, Geo # 181417-053-0098; Lot 127, Cooperville Subd., Unit 2, Geo # 181417-053-0127; Lot 129, Cooperville Subd., Unit 2, Geo # 181417-053-0129; Lot 135, Cooperville Sub., Unit 2, Geo # 181417-053-0135; Lot 161, Cooperville Subd., Unit #2, Geo # 181417-053-0161; Lot 1, Audrey Park Sub., Geo # 181417-054-0001; Lot 2, Ballard Park Subd., Less Ditch, Geo # 181417-061-0002; Lot 1, Casey Park, Geo # 181417-062-0001, said adjudicated property total acreage being 45.81

acres, more or less situated within Section 17, Township 18 North, Range 14 West, Caddo Parish, Louisiana,

AND

Those certain adjudicated properties located in Section 18, Township 18 North, Range 14 West described as LOT 15, E-Z LIVING SUB, Geo # 181418-001-0015; LOT 95, E-Z LIVING SUB., Geo # 181418-001-0095; LOT 96, E-Z LIVING SUB., Geo # 181418-001-0096; LOT 16, E-Z LIVING SUB, Geo # 181418-002-0016; LOT 17, E-Z LIVING SUBD, Geo # 181418-002-0017; LOT 60, E-Z LIVING SUBD, Geo # 181418-002-0060; LOT 107 E-Z LIVING SUBD., Geo # 181418-002-0107; LOT 148, E-Z LIVING SUB, Geo # 181418-002-0148; LOT 153, E-Z LIVING SUB, Geo # 181418-002-0153; LOT 154, E-Z LIVING SUB, Geo # 181418-002-0154; A TRIANGLE TR. IN SW COR OF LOT 142, MEASURING 87.08 FT ON W. LINE & 57.7 FT ON S. LINE, E-Z LIVING SUBD. , Geo # 181418-002-0158; LOT 143 LESS TRIANGULAR TR. OFF NE COR MEASURING 37.12 FT ON N. LINE & 56.02 FT OF E. LINE E-Z LIVING SUBD, Geo # 181418-002-0159; THAT PART OF LOT 61 E-Z LIVING SUB., LYING N. & E. OF SHREVEPORT-BLANCHARD ROAD, Geo # 181418-002-0161; LOT 32, E-Z LIVING SUB, Geo # 181418-003-0032; LOT 37, E-Z LIVING SUB, Geo # 181418-003-0037; LOT 39, E-Z LIVING SUB, Geo # 181418-003-0039; LOT 52, E-Z LIVING SUB., Geo # 181418-003-0052; LOT 115, E-Z LIVING SUB, Geo # 181418-003-0115; LOT 128, E-Z LIVING SUBD, Geo # 181418-003-0128; LOT 131, E-Z LIVING SUB, Geo # 181418-003-0131; LOT 132, E-Z LIVING SUBD, Geo # 181418-003-0132; LOT 136 E-Z LIVING SUBD, Geo # 181418-003-0136; LOT 137, E-Z LIVING SUB, Geo # 181418-003-0137; LOT 138 E-Z LIVING SUB, Geo # 181418-003-0138; LOT 2, JOHNNIE ROBINSON SUB, Geo # 181418-004-0002; LOT 3, JOHNNIE ROBINSON SUB, Geo # 181418-004-0003; LOT 6, JOHNNIE ROBINSON SUB., Geo # 181418-004-0006; LOT 8, JOHNNIE ROBINSON SUBD, Geo # 181418-004-0008; LOT A, JOHNNIE ROBINSON SUB, UNIT 2, Geo # 181418-005-0001; LOT 187, E-Z LIVING SUBD., UNIT 2, Geo # 181418-007-0187; LOT 194, E-Z LIVING SUB, UNIT 2, Geo # 181418-007-0194; W. 40 FT OF S. 150 FT OF TR. C, WASH & MARY SOLOMON PARTN. OF SE/4 OF NE/4 SEC 18-18-14, Geo # 181418-009-0003; E. 40 FT OF W. 80 FT OF S. 150 FT, TR. C, WASH & MARY SOLOMAN PARTN. OF SE/4 OF NE/4 SEC 18-18-14 181418-9-5., Geo # 181418-009-0005; E. 40 FT OF W. 120 FT OF S. 150 FT OF TR C, WASH & MARY SOLOMON PARTN OF SE/4 OF NE/4, Geo # 181418-009-0007; WEST 120 FT. OF NORTH 181.5 FT. OF SOUTH 331.5 FT. OF LOT C, WASH & MARY SOLOMON PARTN. OF SE/4 OF NE/4 SEC 18-18-14., Geo # 181418-009-0010; LOT 7, PRINCE HALL VILLAGE SUBD, Geo # 181418-010-0007; LOT 10, PRINCE HALL VILLAGE SUB, Geo # 181418-010-0010; LOT 18, PRINCE HALL VILLAGE SUBD, Geo # 181418-011-0018; LOT 31, PRINCE HALL VILLAGE SUB., Geo # 181418-011-0031; LOT 38, PRINCE HALL VILLAGE SUB, Geo # 181418-011-0038; LOT 66, PRINCE HALL VILLAGE SUBD, Geo # 181418-011-0066; LOT 7, FAIRYLAND PARK, Geo # 181418-013-0007; LOT 72, FAIRYLAND PARK, Geo # 181418-013-0072; LOTS 54, 55, 56, 57, 58, 59, 69 & 70, FAIRYLAND PARK, Geo # 181418-013-0076; LOT 114, FAIRY LAND PARK, Geo # 181418-014-0114; LOT 115, FAIRYLAND PARK SUBD, Geo # 181418-014-0115; LOT 118, FAIRYLAND PARK SUB, Geo # 181418-014-0118; LOTS 9, 10, 11, 12, 84, 85, 86, 87, 88, 99, 100, 101, 102, 103 & 104, FAIRY LAND PARK, LESS R/W ADJ. LOTS 9, 10, 11 & 12, Geo # 181418-014-0120; LOTS 116 & 117, FAIRY LAND PARK, Geo # 181418-014-0121; LOT 15, FAIRY LAND PARK, Geo # 181418-015-0015; LOT 16, FAIRY LAND PARK, Geo # 181418-015-0016; LOT 17, FAIRY LAND PARK, Geo # 181418-015-0017; LOT 18, FAIRY LAND PARK, Geo # 181418-015-0018; LOT 19, FAIRY LAND PARK, Geo # 181418-015-0019;

LOT 20, FAIRY LAND PARK, Geo # 181418-015-0020; LOT 21, FAIRY LAND PARK, Geo # 181418-015-0021; LOT 22, FAIRY LAND PARK, Geo # 181418-015-0022; LOT 23, FAIRY LAND PARK, Geo # 181418-015-0023; LOT 30, FAIRY LAND PARK, Geo # 181418-015-0030; LOT 31, FAIRY LAND PARK, Geo # 181418-015-0031; LOT 32, FAIRY LAND PARK, Geo # 181418-015-0032; LOT 33, FAIRY LAND PARK, Geo # 181418-015-0033; LOT 34, FAIRY LAND PARK, Geo # 181418-015-0034; LOT 35, FAIRY LAND PARK, Geo # 181418-015-0035; LOT 36, FAIRY LAND PARK, Geo # 181418-015-0036; LOT 37, FAIRY LAND PARK, Geo # 181418-015-0037; LOT 38, FAIRY LAND PARK, Geo # 181418-015-0038; LOT 45, FAIRY LAND PARK, Geo # 181418-015-0045; LOT 46, FAIRY LAND PARK, Geo # 181418-015-0046; LOT 47, FAIRY LAND PARK, Geo # 181418-015-0047; LOT 48, FAIRY LAND PARK, Geo # 181418-015-0048; LOT 49, FAIRY LAND PARK, Geo # 181418-015-0049, LOT 50, FAIRY LAND PARK, Geo # 181418-015-0050; LOT 51, FAIRY LAND PARK, Geo # 181418-015-0051; LOT 52, FAIRY LAND PARK, Geo # 181418-015-0052; LOT 53, FAIRY LAND PARK, Geo # 181418-015-0053; LOT 60, FAIRY LAND PARK, Geo # 181418-015-0060; LOT 61, FAIRY LAND PARK, Geo # 181418-015-0061; LOT 62, FAIRY LAND PARK, Geo # 181418-015-0062; LOT 63, FAIRY LAND PARK, Geo # 181418-015-0063; LOT 64, FAIRY LAND PARK, Geo # 181418-015-0064; LOT 65, FAIRY LAND PARK, Geo # 181418-015-0065; LOT 66, FAIRY LAND PARK, Geo # 181418-015-0066; LOT 67, FAIRY LAND PARK, Geo # 181418-015-0067; LOT 68, FAIRY LAND PARK, Geo # 181418-015-0068; LOT 75, FAIRY LAND PARK, Geo # 181418-016-0075; LOT 76, FAIRY LAND PARK, Geo # 181418-016-0076; LOT 77, FAIRY LAND PARK, Geo # 181418-016-0077; LOT 78, FAIRY LAND PARK, Geo # 181418-016-0078; LOT 79, FAIRY LAND PARK, Geo # 181418-016-0079; LOT 80, FAIRY LAND PARK, Geo # 181418-016-0080; LOT 81, FAIRY LAND PARK, Geo # 181418-016-0081; LOT 82, FAIRY LAND PARK, Geo # 181418-016-0082; LOT 83, FAIRY LAND PARK, Geo # 181418-016-0083; LOT 90, FAIRY LAND PARK, Geo # 181418-016-0090; LOT 91, FAIRY LAND PARK, Geo # 181418-016-0091; LOT 92, FAIRY LAND PARK, Geo # 181418-016-0092; LOT 93, FAIRY LAND PARK, Geo # 181418-016-0093; LOT 94, FAIRY LAND PARK, Geo # 181418-016-0094; LOT 95, FAIRY LAND PARK, Geo # 181418-016-0095; LOT 96, FAIRY LAND PARK, Geo # 181418-016-0096; LOT 97, FAIRY LAND PARK, Geo # 181418-016-0097; LOT 98, FAIRY LAND PARK, Geo # 181418-016-0098; LOT 105, FAIRY LAND PARK, Geo # 181418-016-0105; LOT 106, FAIRY LAND PARK, Geo # 181418-016-0106; LOT 107, FAIRY LAND PARK, Geo # 181418-016-0107; LOT 108, FAIRY LAND PARK, Geo # 181418-016-0108; LOT 109, FAIRY LAND PARK, Geo # 181418-016-0109; LOT 110, FAIRY LAND PARK, Geo # 181418-016-0110; LOT 111, FAIRY LAND PARK, Geo # 181418-016-0111; LOT 112, FAIRY LAND PARK, Geo # 181418-016-0112; LOT 112, FAIRY LAND PARK, Geo # 181418-016-0112; LOT 113, FAIRY LAND PARK, Geo # 181418-016-0113; LOT 15, COOPER HEIGHTS SUBD., UNIT 1, Geo # 181418-019-0015; LOT 24, COOPER HTS. SUBD., UNIT 1, Geo # 181418-019-0024; LOT 28, COOPER HEIGHTS SUB, UNIT 2, Geo # 181418-020-0028; LOT 37, COOPER HEIGHTS SUBD., UNIT 2, Geo # 181418-020-0037; LOT 49, COOPER HEIGHTS SUBD., UNIT 2, Geo # 181418-020-0049; LOT 50, COOPER HEIGHTS SUBD., UNIT 3, Geo # 181418-021-0050; LOT 57 COOPER HTS SUB UNIT 3, Geo # 181418-021-0057; LOT 57 COOPER HTS SUB UNIT 3, Geo # 181418-021-0059; LOT 61, COOPER HEIGHTS SUB UNIT 3, Geo # 181418-021-0061; LOT 68, COOPER HEIGHTS SUBD., UNIT 3, Geo # 181418-021-0068; LOT 69, COOPER HEIGHTS SUBD., UNIT 3, Geo # 181418-021-0069; LOT 71, COOPER HEIGHTS SUB., UNIT 3, Geo # 181418-021-0071; LOT 72, COOPER

HEIGHTS SUBD., UNIT 3, Geo # 181418-021-0072; LOT 73, COOPER HTS SUBD., UNIT 3, Geo # 181418-021-0073; LOT 74, COOPER HEIGHTS SUBD., UNIT 4 , Geo # 181418-022-0074; LOT 75, COOPER HTS. SUB., UNIT #4, Geo # 181418-022-0075; LOT 77, COOPER HEIGHTS SUBD., UNIT 4 , Geo # 181418-022-0077; LOT 78, COOPER HEIGHTS SUBD., UNIT 4, Geo # 181418-022-0078; LOT 81, COOPER HEIGHTS SUBD., UNIT 4, Geo # 181418-022-0081; LOT 82, COOPER HEIGHTS SUBD., UNIT 4, Geo # 181418-022-0082; LOT 83, COOPER HEIGHTS SUBD., UNIT 4, Geo # 181418-022-0083; LOT 85, COOPER HEIGHTS SUBD., UNIT 4, Geo # 181418-022-0085; LOT 86, COOPER HEIGHTS SUBD., UNIT 4, Geo # 181418-022-0086; LOT 87, COOPER HEIGHTS SUB. 4, Geo # 181418-022-0087; LOT 88, COOPER HEIGHTS SUB., UNIT 4, Geo # 181418-022-0088; LOT 89, COOPER HEIGHTS SUBD., UNIT 4, Geo # 181418-022-0089; LOT 92, COOPER HEIGHTS SUBD., UNIT 4, Geo # 181418-022-0092; LOT 93, COOPER HEIGHTS SUBD., UNIT 4, Geo # 181418-022-0093; LOT 94, COOPER HEIGHTS SUB. UNIT 4, Geo # 181418-022-0094; LOT 95, COOPER HEIGHTS SUBD., UNIT 4, 181418-022-0095; LOT 98, COOPER HEIGHTS SUBD., UNIT 4, Geo # 181418-022-0098; LOT 99, COOPER HEIGHTS SUBD., UNIT 4, Geo # 181418-022-0099; LOT 100, COOPER HEIGHTS SUBD., UNIT 4 , Geo # 181418-022-0100; LOT 103, COOPER HEIGHTS SUB, UNIT 4, Geo # 181418-022-0103; LOT 104, COOPER HEIGHTS SUB, UNIT 4 , Geo # 181418-022-0104; LOT 105, COOPER HEIGHTS SUBD., UNIT 4, Geo # 181418-022-0105; LOT 110 COOPER HEIGHTS SUB UNIT 4, Geo # 181418-022-0110; LOT 112, COOPER HEIGHTS SUBD., UNIT 4, Geo # 181418-022-0112; LOT 116, COOPER HEIGHTS SUBD., UNIT 4, Geo # 181418-022-0116; LOT 117, COOPER HEIGHTS SUBD., UNIT 4 , Geo # 181418-022-0117; LOT 119, COOPER HEIGHTS SUBD, UNIT #4, Geo # 181418-022-0119; LOT 125, COOPER HTS SUB UNIT 4; Geo # 181418-022-0125; LOT 126, COOPER HTS SUB., UNIT #4, Geo # 181418-022-0126; LOT 127, COOPER HEIGHTS SUB., UNIT #4, Geo # 181418-022-0127; LOT 133, COOPER HEIGHTS SUBD., UNIT 4, Geo # 181418-022-0133; LOT 43, UNIVERSITY VILLAGE, UNIT #1-A, Geo # 181418-027-0043, FROM SW'LY COR. OF LOT 43, UNIVERSITY VILLAGE UNIT #1-A, RUN SE'LY ALONG AN EXTENSION OF THE SW'LY LINE OF SAID LOT, 75 FT., THENCE NE'LY 114.42 FT. PARALLEL TO SW LINE OF SAID LOT, THENCE SW'LY 114.42 FT. ALONG SE LINE OF SAID LOT, TO POINT OF BEGIN., Geo # 181418-000-0075; LOT 21, E-Z LIVING SUBD., Geo # 181418-002-0021; LOT 28, E-Z LIVING SUB, Geo # 181418-002-0028; LOTS 68 & 69, E-Z LIVING SUB, Geo # 181418-002-0068; LOT 144, E-Z LIVING SUB., Geo # 181418-002-0144; LOT 36, E-Z LIVING SUBD, Geo # 181418-003-0036; LOT 119, E-Z LIVING SUBD, Geo # 181418-003-0119; LOT 129, E-Z LIVING SUB, Geo # 181418-003-0129; LOT 133, E-Z LIVING SUB, Geo # 181418-003-0133; LOT 7, JOHNNIE ROBINSON SUB, Geo # 181418-004-0007; Geo # 181418-006-0249; 312.55 FT. & E. 30 FT. OF N. 347.13 FT. OF LOT D, WASHINGTON & MARY SOLOMON PARTN., SEC. 18-18-14, LESS S. 94.31 FT OF E. 230.94 FT., LESS R/W, Geo # 181418-009-0026; LOT 2, PRINCE HALL VILLAGE SUB, Geo # 181418-010-0002; LOT 47, PRINCE HALL VILLAGE SUBD, Geo # 181418-010-0047; LOT 25, PRINCE HALL VILLAGE SUBD, Geo # 181418-011-0025; LOT 37, PRINCE HALL VILLAGE SUBD, Geo # 181418-011-0037; LOT 39, PRINCE HALL VILLAGE SUB, Geo # 181418-011-0039; LOT 40, PRINCE HALL VILLAGE SUB, Geo # 181418-011-0040; LOT 6, FAIRYLAND PARK, LESS R/W, Geo # 181418-013-0006; LOTS 24, 25, 26, 27, 28, 39, 40, 41, 42 & 43, FAIRYLAND PARK, Geo # 181418-013-0075; LOT 32, COOPER HTS SUB UNIT 2, Geo # 181418-020-0032; LOT 34, COOPER HEIGHTS SUB, UNIT 2, Geo # 181418-020-0034; LOT 58, COOPER HEIGHTS SUB, UNIT 3, Geo # 181418-021-0058; LOT 67, COOPER HEIGHTS SUB, UNIT 3, Geo # 181418-021-0067; LOT 70, COOPER HEIGHTS, UNIT 3,

Geo # 181418-021-0070; LOT 76, COOPER HEIGHTS SUB. UNIT #4, Geo # 181418-022-0076; LOT 131, COOPER HEIGHTS SUBD., UNIT 4 , Geo # 181418-022-0131; LOT 132, COOPER HTS UNIT 4, Geo # 181418-022-0132; LOT 1, E-Z LIVING SUB., UNIT NO. 3, Geo # 181418-032-0001, said adjudicated property total acreage being 32.78 acres, more or less situated within Section 18, Township 18 North, Range 14 West, Caddo Parish, Louisiana

Total acreage to be comprised of 78.59 acres, all as more particularly outlined on a plat on file in the Office of Mineral Resources, Department of Natural Resources. The description is based on information provided by the State Agency regarding location and ownership of surface and mineral rights. All bearings, distances and coordinates, if applicable, are based on Louisiana Coordinate System of 1927, (North or South Zone).

NOTE: The above description of the Tract nominated for lease has been provided and corrected, where required, exclusively by the nomination party. Any mineral lease selected from this Tract and awarded by the Louisiana State Mineral and Energy Board shall be without warranty of any kind, either express, implied, or statutory, including, but not limited to, the implied warranties of merchantability and fitness for a particular purpose. Should the mineral lease awarded by the Louisiana State Mineral and Energy Board be subsequently modified, cancelled or abrogated due to the existence of conflicting leases, operating agreements, private claims or other future obligations or conditions which may affect all or any portion of the leased Tract, it shall not relieve the Lessee of the obligation to pay any bonus due thereon to the Louisiana State Mineral and Energy Board, nor shall the Louisiana State Mineral and Energy Board be obligated to refund any consideration paid by the Lessor prior to such modification, cancellation, or abrogation, including, but not limited to, bonuses, rentals and royalties.

NOTE: Lessee, it's successors or assigns, may produce oil, gas and other minerals from the leased premises by drilling from a surface location on other lands, but notwithstanding any other provision of this lease, Lessee, it's successors or assigns, shall not use the surface of the Lessor's property for drilling or any other operations without prior written permission of Lessor, which permission may be withheld at Lessor's discretion.

NOTE: Notwithstanding anything to the contrary herein contained, at the end of the primary term or any extension thereof by operations, if the Commission of Conservation of the State of Louisiana establishes a drilling unit which included a part of the land herein leased, the production of oil, gas and other minerals from such unit shall maintain this lease in full force and effect only as to such portions of the leased land embraced in said pooled unit; and this lease shall expire as to that part of the land herein leased not included in such unit; and lessee, its successors and assigns agrees to relinquish by formal instrument any portion of the leased land not included in a unit created by the Commission of Conservation while this lease is in effect.

NOTE: Upon the expiration of the primary term hereof or any extension thereof by operations, this lease shall automatically terminate and be of no further force or effect except as to all that part of the leased premises then included within the geographical boundaries of a producing unit duly established by governmental agency or authority having jurisdiction, from the surface of the earth to a depth of one hundred (100) feet below the deepest depth from which any well commenced during the primary term hereof on the leased premises or on lands pooled therewith is completed and from which there is production in paying quantities, such depth determination to be made on a unit by unit basis. In the absence of units so established, this lease shall terminate except as to forty (40) acres around each producing oil well and one hundred sixty (160) acres around each producing or shut-in gas well located on the leased premises, in as near the form of a square as is practicable, from the surface of the earth down to a depth of 100 feet below the deepest depth from which said well or wells are completed and from which there is production in paying quantities, such depth determination to be made on a well by well basis.

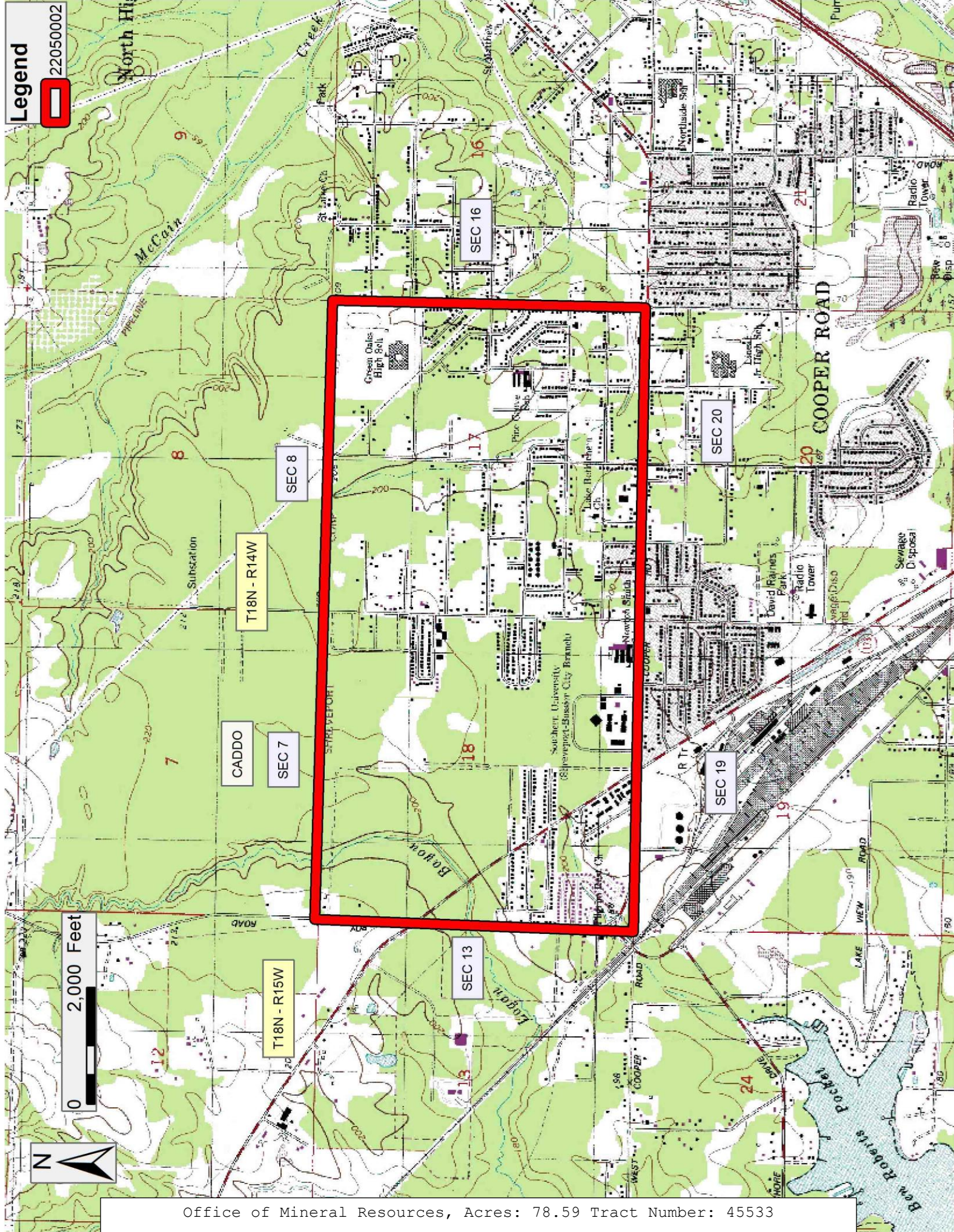
NOTE: The Caddo Parish Commission will require a minimum bonus of \$1,500.00 per acre and a minimum royalty of not less than 1/5th or 20%.

Applicant: USG PROPERTIES HAYNESVILLE, LLC to Agency and by Resolution from the Caddo Parish Commission authorizing the Mineral Board to act in its behalf

Bidder	Cash Payment	Price/Acre	Rental	Oil	Gas	Other

Legend

22050002



0 2,000 Feet



Office of Mineral Resources, Acres: 78.59 Tract Number: 45533

TRACT 45534 - Caddo Parish, Louisiana

A certain Tract of land, excluding the beds and bottoms of all navigable waters, belonging to and not presently under mineral lease from City Of Shreveport on May 11, 2022, being more fully described as follows: All lands in Sections 13 and 24, Township 17 North, Range 15 West, Caddo Parish, Louisiana, being more fully described as follows:

1a) All dedicated highways, roads, streets, alleys, drainage and rights of way located in Sections 13 and 24, Township 17 North, Range 15 West, Caddo Parish, Louisiana, containing 68.591225 acres, more or less;

1b) That certain tract of land belonging to the City of Shreveport within Section 13, Township 17 North, Range 15 West, Caddo Parish, Louisiana, with GEO Identification Number 017-171513-000-0056-00 containing 34.891 acres, more or less, acquired by City of Shreveport as recorded in Book 1482, Page 93, Instrument No. 645649;

1c) That certain tract of land belonging to the City of Shreveport within Section 13, Township 17 North, Range 15 West, Caddo Parish, Louisiana, with GEO Identification Number 017-171513-000-0043-00 containing 21.21 acres, more or less, acquired by City of Shreveport as recorded in Book 1482, Page 89, Instrument No. 645648;

1d) That certain tract of land belonging to the City of Shreveport within Section 13, Township 17 North, Range 15 West, Caddo Parish, Louisiana, with GEO Identification Number 017-171513-018-0017-00 containing 0.920033 acres, more or less, acquired by City of Shreveport as recorded in Book 1482, Page 89, Instrument No. 645648;

1e) That certain tract of land belonging to the City of Shreveport within Section 13, Township 17 North, Range 15 West, Caddo Parish, Louisiana, with GEO Identification Number 017-171513-018-0019-00 containing 3.628994 acres, more or less, acquired by City of Shreveport as recorded in Book 1482, Page 89, Instrument No. 645648;

1f) That certain tract of land belonging to the City of Shreveport within Section 13, Township 17 North, Range 15 West, Caddo Parish, Louisiana, with GEO Identification Number 017-171513-018-0020-00 containing 0.072421 acres, more or less, acquired by City of Shreveport as recorded in Book 1482, Page 89, Instrument No. 645648;

1g) That certain tract of land belonging to the City of Shreveport within Section 13, Township 17 North, Range 15 West, Caddo Parish, Louisiana, with

GEO Identification Number 017-171513-012-0030-00 containing 0.091939 acres, more or less, acquired by City of Shreveport as recorded in Book 2471, Page 736, Instrument No. 1166363;

1h) That certain tract of land belonging to the City of Shreveport within Section 24, Township 17 North, Range 15 West, Caddo Parish, Louisiana, with GEO Identification Number 017-171524-000-0036-00 containing 1.641850 acres, more or less, acquired by City of Shreveport as recorded in Book 1238, Page 739, Instrument No. 493138 and Book 1314, Page 172, Instrument No. 542878;

1i) All tax adjudicated properties in Sections 13 and 24, Township 17 North, range 15 West containing 3.99 acres, more or less; the total for Sections 13 and 24, Township 17 North, Range 15 West containing **135.04 acres**, all as more particularly outlined on a plat on file in the Office of Mineral Resources, Department of Natural Resources. The description is based on information provided by the State Agency regarding location and ownership of surface and mineral rights. All bearings, distances and coordinates, if applicable, are based on Louisiana Coordinate System of 1927, (North or South Zone), all as more particularly outlined on a plat on file in the Office of Mineral Resources, Department of Natural Resources. The description is based on information provided by the State Agency regarding location and ownership of surface and mineral rights. All bearings, distances and coordinates, if applicable, are based on Louisiana Coordinate System of 1927, (North or South Zone).

NOTE: The above description of the Tract nominated for lease has been provided and corrected, where required, exclusively by the nomination party. Any mineral lease selected from this Tract and awarded by the Louisiana State Mineral and Energy Board shall be without warranty of any kind, either express, implied, or statutory, including, but not limited to, the implied warranties of merchantability and fitness for a particular purpose. Should the mineral lease awarded by the Louisiana State Mineral and Energy Board be subsequently modified, cancelled or abrogated due to the existence of conflicting leases, operating agreements, private claims or other future obligations or conditions which may affect all or any portion of the leased Tract, it shall not relieve the Lessee of the obligation to pay any bonus due thereon to the Louisiana State Mineral and Energy Board, nor shall the Louisiana State Mineral and Energy Board be obligated to refund any consideration paid by the Lessor prior to such modification, cancellation, or abrogation, including, but not limited to, bonuses, rentals and royalties.

NOTE: Lessee, it's successors or assigns, may produce oil, gas and other minerals from the leased premises by drilling from a surface location on other lands, but notwithstanding any other provision of this lease, Lessee, it's successors or assigns, shall not use the surface of the Lessor's property for drilling or any other operations without prior written

permission of Lessor, which permission may be withheld at Lessor's discretion.

NOTE: Notwithstanding anything to the contrary herein contained, at the end of the primary term or any extension thereof by operations, if the Commission of Conservation of the State of Louisiana establishes a drilling unit which included a part of the land herein leased, the production of oil, gas and other minerals from such unit shall maintain this lease in full force and effect only as to such portions of the leased land embraced in said pooled unit; and this lease shall expire as to that part of the land herein leased not included in such unit; and lessee, its successors and assigns agrees to relinquish by formal instrument any portion of the leased land not included in a unit created by the Commission of Conservation while this lease is in effect.

NOTE: Upon the expiration of the primary term hereof or any extension thereof by operations, this lease shall automatically terminate and be of no further force or effect except as to all that part of the leased premises then included within the geographical boundaries of a producing unit duly established by governmental agency or authority having jurisdiction, from the surface of the earth to a depth of one hundred (100) feet below the deepest depth from which any well commenced during the primary term hereof on the leased premises or on lands pooled therewith is completed and from which there is production in paying quantities, such depth determination to be made on a unit by unit basis. In the absence of units so established, this lease shall terminate except as to forty (40) acres around each producing oil well and one hundred sixty (160) acres around each producing or shut-in gas well located on the leased premises, in as near the form of a square as is practicable, from the surface of the earth down to a depth of 100 feet below the deepest depth from which said well or wells are completed and from which there is production in paying quantities, such depth determination to be made on a well by well basis.

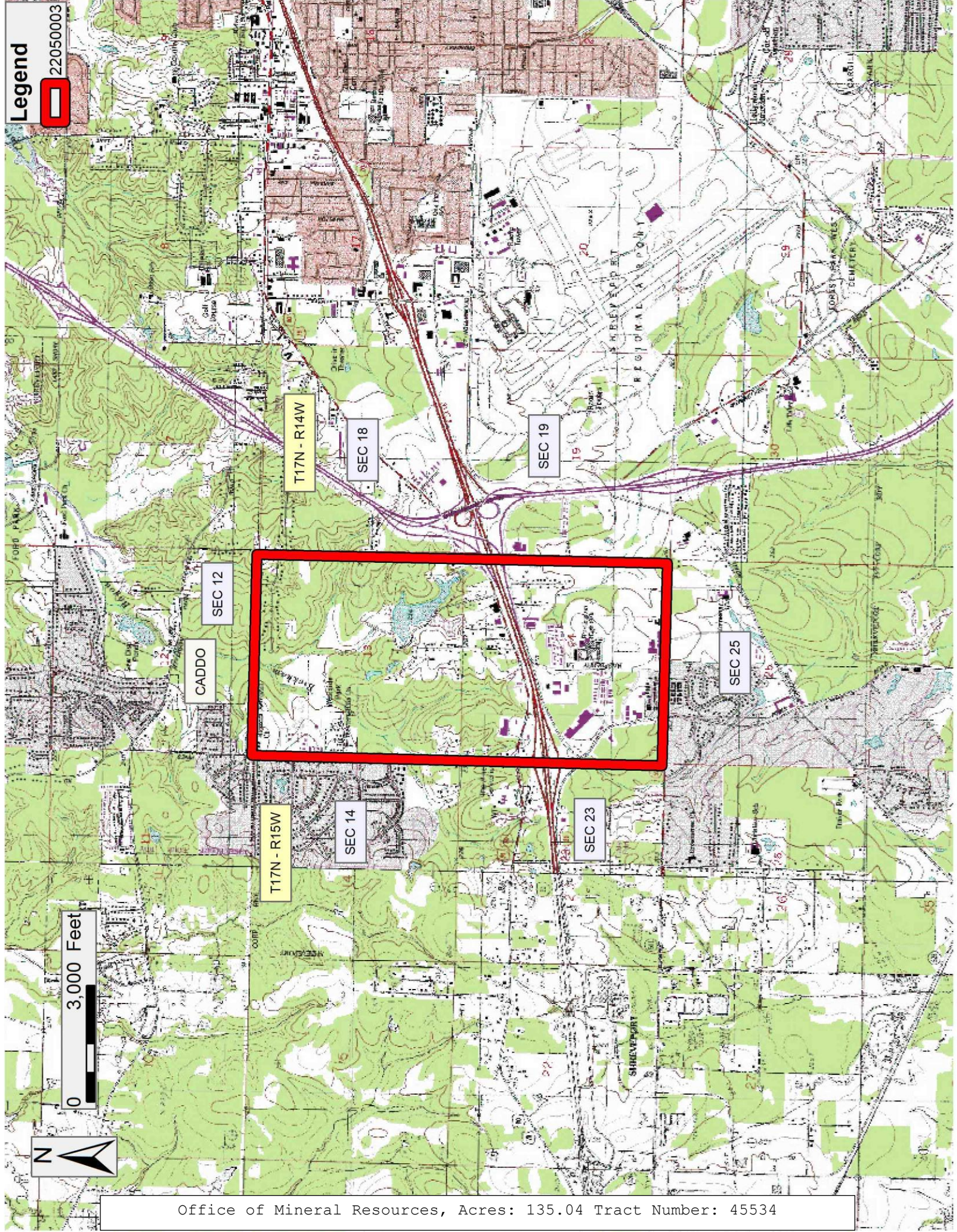
NOTE: The City of Shreveport will require a minimum bonus of one thousand five hundred dollars (\$1,500.00) per acre and a minimum royalty of not less than twenty percent (20%).

Applicant: MCGINTY-DURHAM, INC. to Agency and by Resolution from the City Of Shreveport authorizing the Mineral Board to act in its behalf

Bidder	Cash Payment	Price/Acre	Rental	Oil	Gas	Other

Legend

22050003



0 3,000 Feet

Office of Mineral Resources, Acres: 135.04 Tract Number: 45534