

TRACT 45536 - Bossier Parish, Louisiana

All of the lands now or formerly constituting the beds and bottoms of all water bodies of every nature and description as to which title is vested in the State of Louisiana, together with all islands arising therein and other lands formed by accretion or by reliction, where allowed by law, excepting tax adjudicated lands, and not presently under mineral lease on June 8, 2022, situated in Bossier Parish, Louisiana, and more particularly described as follows: Beginning at a point having Coordinates of X = 1,651,597.61 and Y = 651,641.30; thence East 4,799.09 feet to a point having Coordinates of X = 1,656,396.70 and Y = 651,641.30; thence South 5,041.30 feet to the Northwest corner of State Lease No. 20354, as amended and the Northeast corner of State Lease No. 20881 having Coordinates of X = 1,656,396.70 and Y = 646,600.00; thence West 4,842.11 feet along the north boundary of said State Lease No. 20881 to a point having Coordinates of X = 1,651,554.59 and Y = 646,600.00; thence North 00 degrees 29 minutes 20 seconds East 5,041.48 feet to the point of beginning, containing approximately **2 acres**, all as more particularly outlined on a plat on file in the Office of Mineral Resources, Department of Natural Resources. All bearings, distances and coordinates are based on Louisiana Coordinate System of 1927, (North or South Zone), where applicable.

NOTE: The above description of the Tract nominated for lease has been provided and corrected, where required, exclusively by the nomination party. Any mineral lease selected from this Tract and awarded by the Louisiana State Mineral and Energy Board shall be without warranty of any kind, either express, implied, or statutory, including, but not limited to, the implied warranties of merchantability and fitness for a particular purpose. Should the mineral lease awarded by the Louisiana State Mineral and Energy Board be subsequently modified, cancelled or abrogated due to the existence of conflicting leases, operating agreements, private claims or other future obligations or conditions which may affect all or any portion of the leased Tract, it shall not relieve the Lessee of the obligation to pay any bonus due thereon to the Louisiana State Mineral and Energy Board, nor shall the Louisiana State Mineral and Energy Board be obligated to refund any consideration paid by the Lessor prior to such modification, cancellation, or abrogation, including, but not limited to, bonuses, rentals and royalties.

Applicant: CYPRESS ENERGY CORPORATION

Bidder	Cash Payment	Price/Acre	Rental	Oil	Gas	Other

Legend

22060003

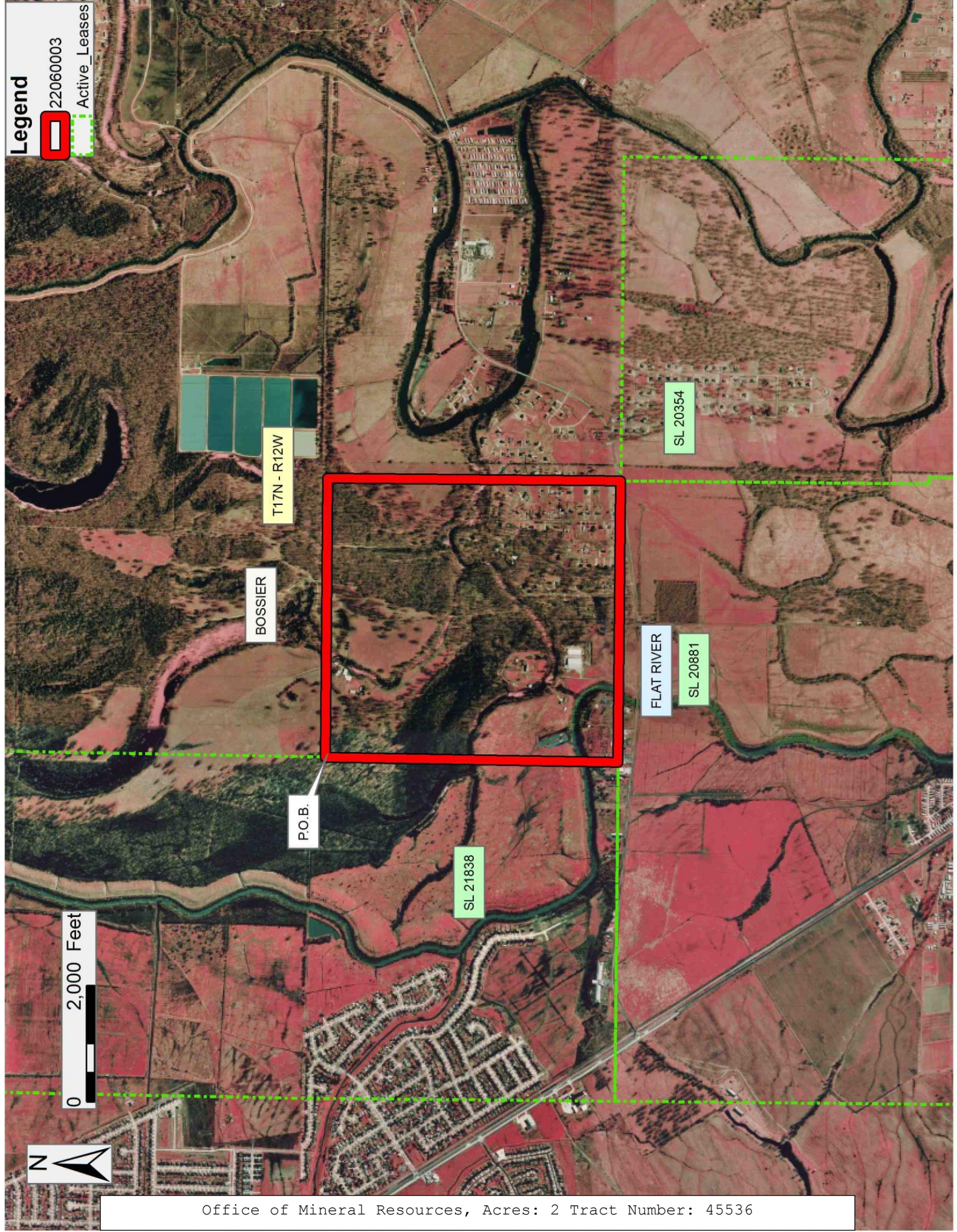
Active_Leases



0 2,000 Feet



Office of Mineral Resources, Acres: 2 Tract Number: 45536



TRACT 45537 - Portion of Block 71, Chandeleur Sound Area, and Block 3, Main Pass Area, Revised, St. Bernard Parish, Louisiana

All of the lands now or formerly constituting the beds and bottoms of all water bodies of every nature and description as to which title is vested in the State of Louisiana, together with all islands arising therein and other lands formed by accretion or by reliction, where allowed by law, excepting tax adjudicated lands, and not presently under mineral lease on June 8, 2022, situated in St. Bernard Parish, Louisiana, and more particularly described as follows: Beginning at a point on the East line of Block 71, Chandeleur Sound Area, having Coordinates of X = 2,620,600.00 and Y = 386,700.00; thence South 3,683.93 feet along the East line of said Block 71 to the Northeast corner of State Lease No. 18194 having Coordinates of X = 2,620,600.00 and Y = 383,016.07; thence along the boundary of said State Lease No. 18194 the following courses: West 9,650.00 feet to a point having Coordinates of X = 2,610,950.00 and Y = 383,016.07; South 1,686.07 feet to a point having Coordinates of X = 2,610,950.00 and Y = 381,330.00; East 2,770.02 feet to a point having Coordinates of X = 2,613,720.02 and Y = 381,330.00; North 68 degrees 47 minutes 22 seconds West 50.42 feet to a point having Coordinates of X = 2,613,673.02 and Y = 381,348.26; North 58 degrees 06 minutes 56 seconds West 246.99 feet to a point having Coordinates of X = 2,613,463.30 and Y = 381,478.72; North 58 degrees 07 minutes 00 seconds West 52.69 feet to a point having Coordinates of X = 2,613,418.56 and Y = 381,506.55; North 68 degrees 16 minutes 28 seconds East 372.65 feet to a point having Coordinates of X = 2,613,764.74 and Y = 381,644.49; North 65 degrees 31 minutes 40 seconds East 73.60 feet to a point having Coordinates of X = 2,613,831.73 and Y = 381,674.98; Northwesterly along a curve to the right with a radius of 10,000.00 feet, an arc length of 598.93 feet and chord of North 80 degrees 31 minutes 23 seconds West 598.84 feet to a point having Coordinates of X = 2,613,241.06 and Y = 381,773.58; Northeasterly along a curve to the right with a radius of 4,000.00 feet, an arc length of 2,096.83 feet and chord of North 77 degrees 10 minutes 30 seconds East 2,072.90 feet to a point having Coordinates of X = 2,615,262.25 and Y = 382,233.71; Southeasterly along a curve to the right with a radius of 5,000.00 feet, an arc length of 2,158.27 feet and chord of South 80 degrees 53 minutes 23 seconds East 2,141.55 feet to a point having Coordinates of X = 2,617,376.79 and Y = 381,894.63; Southwesterly along a curve to the right with a radius of 8,900.00 feet, an arc length of 629.78 feet and chord of South 76 degrees 45 minutes 56 seconds West 629.65 feet to a point having Coordinates of X = 2,616,763.86 and Y = 381,750.48; and South 73 degrees 50 minutes 29 seconds East 776.21 feet to the most Westerly Northwest corner of State Lease No. 18043 having Coordinates of X = 2,617,509.41 and Y = 381,534.46; thence along the boundary of said State Lease No. 18043 the following courses: South 73 degrees 50 minutes 31 seconds East 472.51 feet to a point having Coordinates of X = 2,617,963.26 and Y = 381,402.97; South 70 degrees 28 minutes 32 seconds East 197.16 feet to a point having Coordinates of X = 2,618,149.08 and Y = 381,337.08; and South 76 degrees 38 minutes 28 seconds West 30.64 feet to a point on the South line of said Block 71, said point being a point on the North line of Block 3, Main Pass Area, having Coordinates of X = 2,618,119.27 and Y = 381,330.00; thence East 49.83 feet along the North line

of said Block 3 to the Northwest corner of State Lease No. 17277 having Coordinates of X = 2,618,169.05 and Y = 381,330.00; thence along the boundary of said State Lease No. 17277 the following courses: South 70 degrees 28 minutes 32 seconds East 980.55 feet to a point having Coordinates of X = 2,619,093.22 and Y = 381,002.29; South 67 degrees 53 minutes 18 seconds East 585.45 feet to a point having Coordinates of X = 2,619,635.61 and Y = 380,781.92; South 38 degrees 40 minutes 42 seconds West 173.07 feet to a point having Coordinates of X = 2,619,527.45 and Y = 380,646.81; South 60 degrees 11 minutes 12 seconds West 200.07 feet to a point having Coordinates of X = 2,619,353.86 and Y = 380,547.34; and East 1,246.14 feet to its Southeast corner, said corner being a point on the East line of said Block 3, having Coordinates of X = 2,620,600.00 and Y = 380,547.34; thence South 1,847.34 feet along the East line of said Block 3 to a point having Coordinates of X = 2,620,600.00 and Y = 378,700.00; thence West 11,100.00 feet to a point having Coordinates of X = 2,609,500.00 and Y = 378,700.00; thence North 2,630.00 feet to a point on the common line between said Block 3 and Block 71 having Coordinates of X = 2,609,500.00 and Y = 381,330.00; thence North 5,370.00 feet to a point having Coordinates of X = 2,609,500.00 and Y = 386,700.00; thence East 11,100.00 feet to the point of beginning, containing **1,709.89 acres**, all as more particularly outlined on a plat on file in the Office of Mineral Resources, Department of Natural Resources. All bearings, distances and coordinates are based on Louisiana Coordinate System of 1927, (North or South Zone), where applicable.

NOTE: The above description of the Tract nominated for lease has been provided and corrected, where required, exclusively by the nomination party. Any mineral lease selected from this Tract and awarded by the Louisiana State Mineral and Energy Board shall be without warranty of any kind, either express, implied, or statutory, including, but not limited to, the implied warranties of merchantability and fitness for a particular purpose. Should the mineral lease awarded by the Louisiana State Mineral and Energy Board be subsequently modified, cancelled or abrogated due to the existence of conflicting leases, operating agreements, private claims or other future obligations or conditions which may affect all or any portion of the leased Tract, it shall not relieve the Lessee of the obligation to pay any bonus due thereon to the Louisiana State Mineral and Energy Board, nor shall the Louisiana State Mineral and Energy Board be obligated to refund any consideration paid by the Lessor prior to such modification, cancellation, or abrogation, including, but not limited to, bonuses, rentals and royalties.

NOTE: The State of Louisiana does hereby reserve, and this lease shall be subject to, the imprescriptible right of surface use in the nature of a servitude in favor of the Department of Natural Resources, including its Offices and Commissions, for the sole purpose of implementing, constructing, servicing and maintaining approved coastal zone management and/or restoration projects. Utilization of any and all rights derived under this lease by the mineral lessee, its agents, successors or assigns, shall not interfere with nor hinder the reasonable surface use by the Department of Natural Resources, its Offices or Commissions, as herein above reserved.

NOTE: It appears, according to our records, that a portion of this Tract is located within the restrictive safety fairway area as set out by the Corps of Engineers, U.S. Army and/or the restrictive anchorage area as set out by the U.S. Coast Guard.

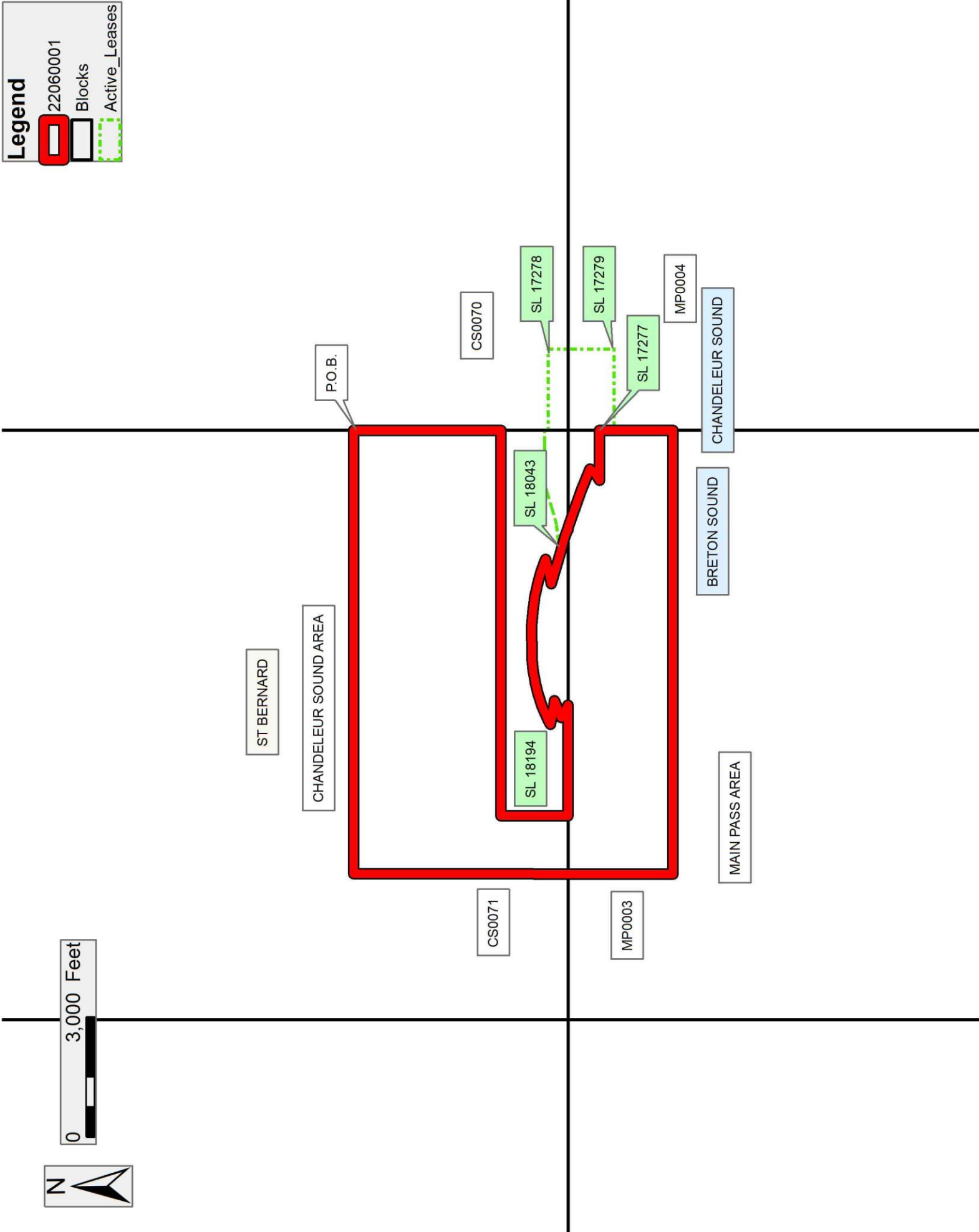
NOTE: This tract is located in an area designated by the Louisiana Legislature or the Wildlife and Fisheries Commission as a Public Oyster Seed Ground, Reservation, or area of Calcasieu or Sabine Lake. Proposed projects occurring in these areas will be evaluated on a case by case basis by Louisiana Department of Wildlife & Fisheries. Modifications to proposed project features including, but not limited to, access routes, well sites, flowlines, and appurtenant structures maybe required by the Louisiana Department of Wildlife and Fisheries. In addition, compensatory mitigation will be required to offset unavoidable habitat impacts.

Applicant: WOODLAND PETROLEUM CORPORATION

Bidder	Cash Payment	Price/Acre	Rental	Oil	Gas	Other

Legend

- 22060001
- Blocks
- Active_Leases



TRACT 45538 - Portion of Block 70, Chandeleur Sound Area, and Block 4, Main Pass Area, Revised, St. Bernard Parish, Louisiana

All of the lands now or formerly constituting the beds and bottoms of all water bodies of every nature and description as to which title is vested in the State of Louisiana, together with all islands arising therein and other lands formed by accretion or by reliction, where allowed by law, excepting tax adjudicated lands, and not presently under mineral lease on June 8, 2022, situated in St. Bernard Parish, Louisiana, and more particularly described as follows: Beginning at a point on the West line of Block 70, Chandeleur Sound Area, having Coordinates of X = 2,620,600.00 and Y = 386,700.00; thence East 14,750.00 feet to a point on the East line of said Block 70 having Coordinates of X = 2,635,350.00 and Y = 386,700.00; thence South 5,370.00 feet along the East line of said Block 70 to its Southeast corner, said corner being the Northeast corner of Block 4, Main Pass Area, having Coordinates of X = 2,635,350.00 and Y = 381,330.00; thence South 1,456.40 feet along the East line of said Block 4 to the Northeast corner of State Lease No. 16300, as amended, having Coordinates of X = 2,635,350.00 and Y = 379,873.60; thence West 2,504.41 feet along the North line of said State Lease No. 16300 to its Northwest corner, said corner being the Northeast corner of State Lease No. 16170, as amended, having Coordinates of X = 2,632,845.59 and Y = 379,873.60; thence along the boundary of said State Lease No. 16170 the following courses: West 2,492.62 feet to its Northwest corner having Coordinates of X = 2,630,352.97 and Y = 379,873.60, and South 1,173.60 feet to a point having Coordinates of X = 2,630,352.97 and Y = 378,700.00; thence West 9,752.97 feet to a point on the West line of said Block 4 having Coordinates of X = 2,620,600.00 and Y = 378,700.00; thence North 1,482.00 feet along the West line of said Block 4 to the Southwest corner of State Lease No. 17279 having Coordinates of X = 2,620,600.00 and Y = 380,182.00; thence along the boundary of said State Lease No. 17279 the following courses: East 2,036.00 feet to its Southeast corner having Coordinates of X = 2,622,636.00 and Y = 380,182.00, and North 1,148.00 feet to its Northeast corner, said corner being the Southeast corner of State Lease No. 17278, having Coordinates of X = 2,622,636.00 and Y = 381,330.00; thence along the boundary of said State Lease No. 17278 the following courses: North 500.00 feet to its Northeast corner having Coordinates of X = 2,622,636.00 and Y = 381,830.00, and West 2,036.00 feet to its Northwest corner, said corner being a point on the West line of said Block 70, having Coordinates of X = 2,620,600.00 and Y = 381,830.00; thence North 4,870.00 along the West line of said Block 70 to the point of beginning, containing **2,497.25 acres**, all as more particularly outlined on a plat on file in the Office of Mineral Resources, Department of Natural Resources. All bearings, distances and coordinates are based on Louisiana Coordinate System of 1927, (North or South Zone), where applicable.

NOTE: The above description of the Tract nominated for lease has been provided and corrected, where required, exclusively by the nomination party. Any mineral lease selected from this Tract and awarded by the Louisiana State Mineral and Energy Board shall be without warranty of any kind, either express, implied, or statutory, including, but not limited to, the implied

warranties of merchantability and fitness for a particular purpose. Should the mineral lease awarded by the Louisiana State Mineral and Energy Board be subsequently modified, cancelled or abrogated due to the existence of conflicting leases, operating agreements, private claims or other future obligations or conditions which may affect all or any portion of the leased Tract, it shall not relieve the Lessee of the obligation to pay any bonus due thereon to the Louisiana State Mineral and Energy Board, nor shall the Louisiana State Mineral and Energy Board be obligated to refund any consideration paid by the Lessor prior to such modification, cancellation, or abrogation, including, but not limited to, bonuses, rentals and royalties.




NOTE: The State of Louisiana does hereby reserve, and this lease shall be subject to, the imprescriptible right of surface use in the nature of a servitude in favor of the Department of Natural Resources, including its Offices and Commissions, for the sole purpose of implementing, constructing, servicing and maintaining approved coastal zone management and/or restoration projects. Utilization of any and all rights derived under this lease by the mineral lessee, its agents, successors or assigns, shall not interfere with nor hinder the reasonable surface use by the Department of Natural Resources, its Offices or Commissions, as herein above reserved.

NOTE: This tract is located in an area designated by the Louisiana Legislature or the Wildlife and Fisheries Commission as a Public Oyster Seed Ground, Reservation, or area of Calcasieu or Sabine Lake. Proposed projects occurring in these areas will be evaluated on a case by case basis by Louisiana Department of Wildlife & Fisheries. Modifications to proposed project features including, but not limited to, access routes, well sites, flowlines, and appurtenant structures maybe required by the Louisiana Department of Wildlife and Fisheries. In addition, compensatory mitigation will be required to offset unavoidable habitat impacts.

Applicant: WOODLAND PETROLEUM CORPORATION

Bidder	Cash Payment	Price/Acre	Rental	Oil	Gas	Other

Legend

-  22060002
-  Blocks
-  Active_Leases



0 3,000 Feet

Office of Mineral Resources, Acres: 2497.25 Tract Number: 45538

