

TRACT 45539 - Tangipahoa Parish, Louisiana

All of the mineral rights only under land adjudicated to and acquired by the State of Louisiana in and through a proper tax sale, and subsequently alienated by the State which retained the mineral rights thereto, and which is not under valid mineral lease from the State of Louisiana on June 8, 2022, situated in Tangipahoa Parish, Louisiana, and being more fully described as follows: A portion of an 80 acre tract situated in the Southwest Quarter (SW/4) of Section 7, Township 2 South, Range 9 East. Tangipahoa Parish, per Patent No. 17656, dated September 8, 1953, and being further described in that certain Act of Partition, dated January 4, 1995, being the Eastern portion of said 80 acre tract, according to map of survey by Lanier Land Surveying dated July 26, 1994 and attached to said partition, containing **37.74 acres**, all as more particularly outlined on a plat on file in the Office of Mineral Resources, Department of Natural Resources. All bearings, distances and coordinates are based on Louisiana Coordinate System of 1927, (North or South Zone), where applicable.

NOTE: The above description of the Tract nominated for lease has been provided and corrected, where required, exclusively by the nomination party. Any mineral lease selected from this Tract and awarded by the Louisiana State Mineral and Energy Board shall be without warranty of any kind, either express, implied, or statutory, including, but not limited to, the implied warranties of merchantability and fitness for a particular purpose. Should the mineral lease awarded by the Louisiana State Mineral and Energy Board be subsequently modified, cancelled or abrogated due to the existence of conflicting leases, operating agreements, private claims or other future obligations or conditions which may affect all or any portion of the leased Tract, it shall not relieve the Lessee of the obligation to pay any bonus due thereon to the Louisiana State Mineral and Energy Board, nor shall the Louisiana State Mineral and Energy Board be obligated to refund any consideration paid by the Lessor prior to such modification, cancellation, or abrogation, including, but not limited to, bonuses, rentals and royalties.

NOTE: No surface activity on this tract undertaken in conjunction with any operations under any mineral lease given on this tract will be allowed without prior approval of the surface owner and further, no such right of surface use shall be deemed to have been given as part of any mineral lease by the State of Louisiana on this tract.

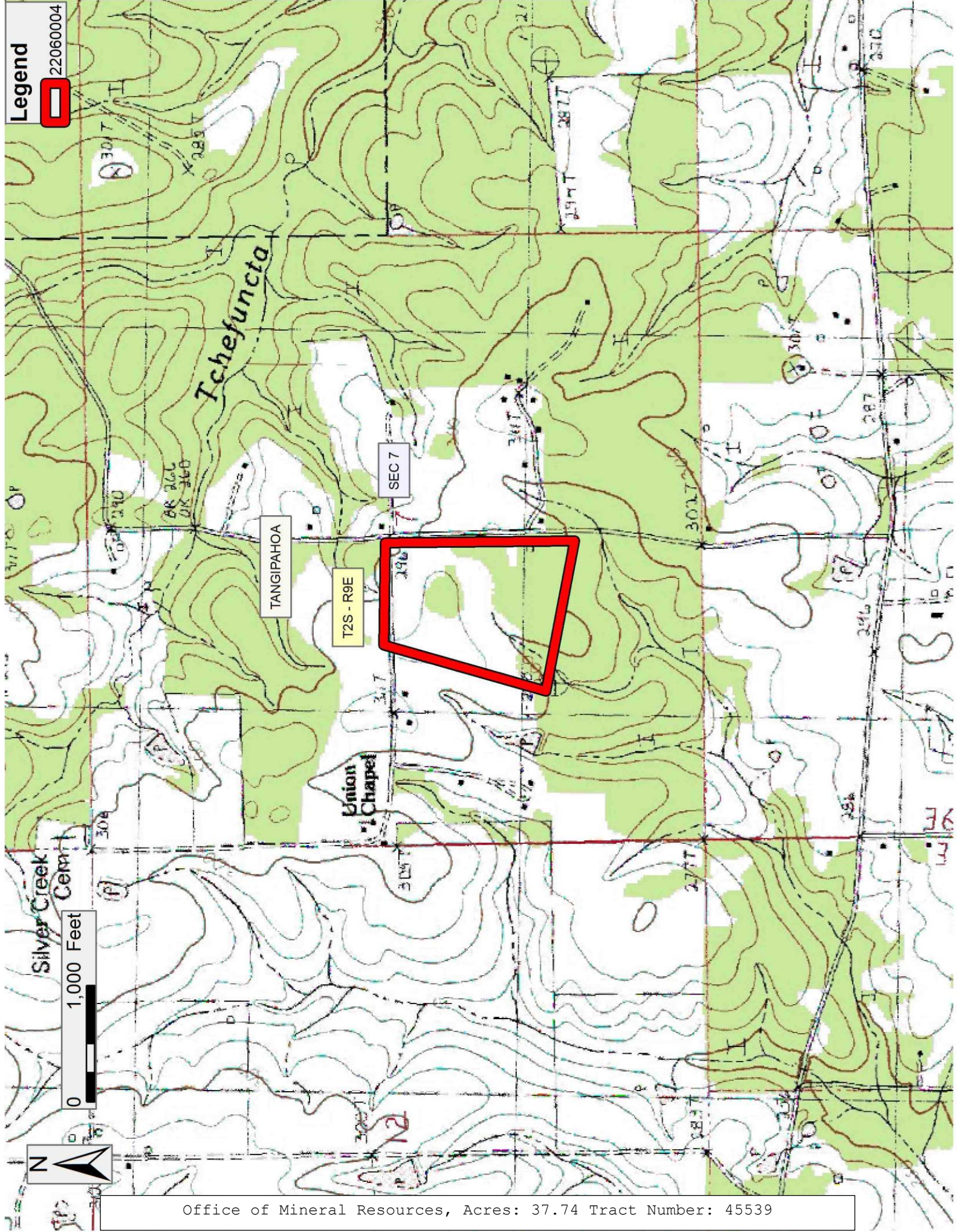
NOTE: A portion of this tract is located on or adjacent to a Louisiana designated Natural and Scenic River. The applicant must obtain authorization from the Louisiana Department of Wildlife and Fisheries, Scenic Rivers Program prior to initiating any activities within or adjacent to the river, including, but not limited to, crossings by roads and pipelines, well sites, production facilities and water withdrawals.

Applicant: CYPRESS ENERGY CORPORATION

Bidder	Cash Payment	Price/Acre	Rental	Oil	Gas	Other

Legend

22060004



Office of Mineral Resources, Acres: 37.74 Tract Number: 45539