

**TRACT 45557 - Caddo Parish, Louisiana**

All of the lands now or formerly constituting the beds and bottoms of all water bodies of every nature and description as to which title is vested in the State of Louisiana, together with all islands arising therein and other lands formed by accretion or by reliction, where allowed by law, excepting tax adjudicated lands, and not presently under mineral lease on August 10, 2022, situated in Caddo Parish, Louisiana, and more particularly described as follows: Beginning at a point having Coordinates of X = 1,589,552.78 and Y = 664,104.92; thence North 00 degrees 45 minutes 24 seconds East 3,800.28 feet a point having Coordinates of X = 1,589,602.95 and Y = 667,904.87; thence North 29 degrees 42 minutes 57 seconds East 1,598.20 feet to a point having Coordinates of X = 1,590,395.18 and Y = 669,292.90; thence North 00 degrees 11 minutes 36 seconds East approximately 1,976 feet to a point on the South boundary of Operating Agreement A0275; thence Easterly along the south boundary of said A0275 to a point of intersection with a line having a bearing of North 00 degrees 09 minutes 00 seconds West; thence South 00 degrees 09 minutes 00 seconds East approximately 1,968 feet to a point having Coordinates of X = 1,595,776.78 and Y = 669,242.19; thence South 44 degrees 35 minutes 42 seconds West 1,319.54 feet to a point having Coordinates of X = 1,594,850.34 and Y = 668,302.56; thence South 00 degrees 45 minutes 24 seconds West 4,245.88 feet to a point having Coordinates of X = 1,594,794.28 and Y = 664,057.05; thence North 89 degrees 28 minutes 36 seconds West 5,241.72 feet to the point of beginning, containing approximately **366 acres**, all as more particularly outlined on a plat on file in the Office of Mineral Resources, Department of Natural Resources. All bearings, distances and coordinates are based on Louisiana Coordinate System of 1927, (North or South Zone), where applicable.

NOTE: The above description of the Tract nominated for lease has been provided and corrected, where required, exclusively by the nomination party. Any mineral lease selected from this Tract and awarded by the Louisiana State Mineral and Energy Board shall be without warranty of any kind, either express, implied, or statutory, including, but not limited to, the implied warranties of merchantability and fitness for a particular purpose. Should the mineral lease awarded by the Louisiana State Mineral and Energy Board be subsequently modified, cancelled or abrogated due to the existence of conflicting leases, operating agreements, private claims or other future obligations or conditions which may affect all or any portion of the leased Tract, it shall not relieve the Lessee of the obligation to pay any bonus due thereon to the Louisiana State Mineral and Energy Board, nor shall the Louisiana State Mineral and Energy Board be obligated to refund any consideration paid by the Lessor prior to such modification, cancellation, or abrogation, including, but not limited to, bonuses, rentals and royalties.

NOTE: Lessee agrees not to erect any derrick, tank, warehouse or other equipment or structure on the leased premises nor shall lessee interfere, in any manner, with lessor's use of the property. Lessee shall have, however, the complete right to drill for, produce, extract and recover the minerals in and beneath said land by drilling or other operations conducted from the

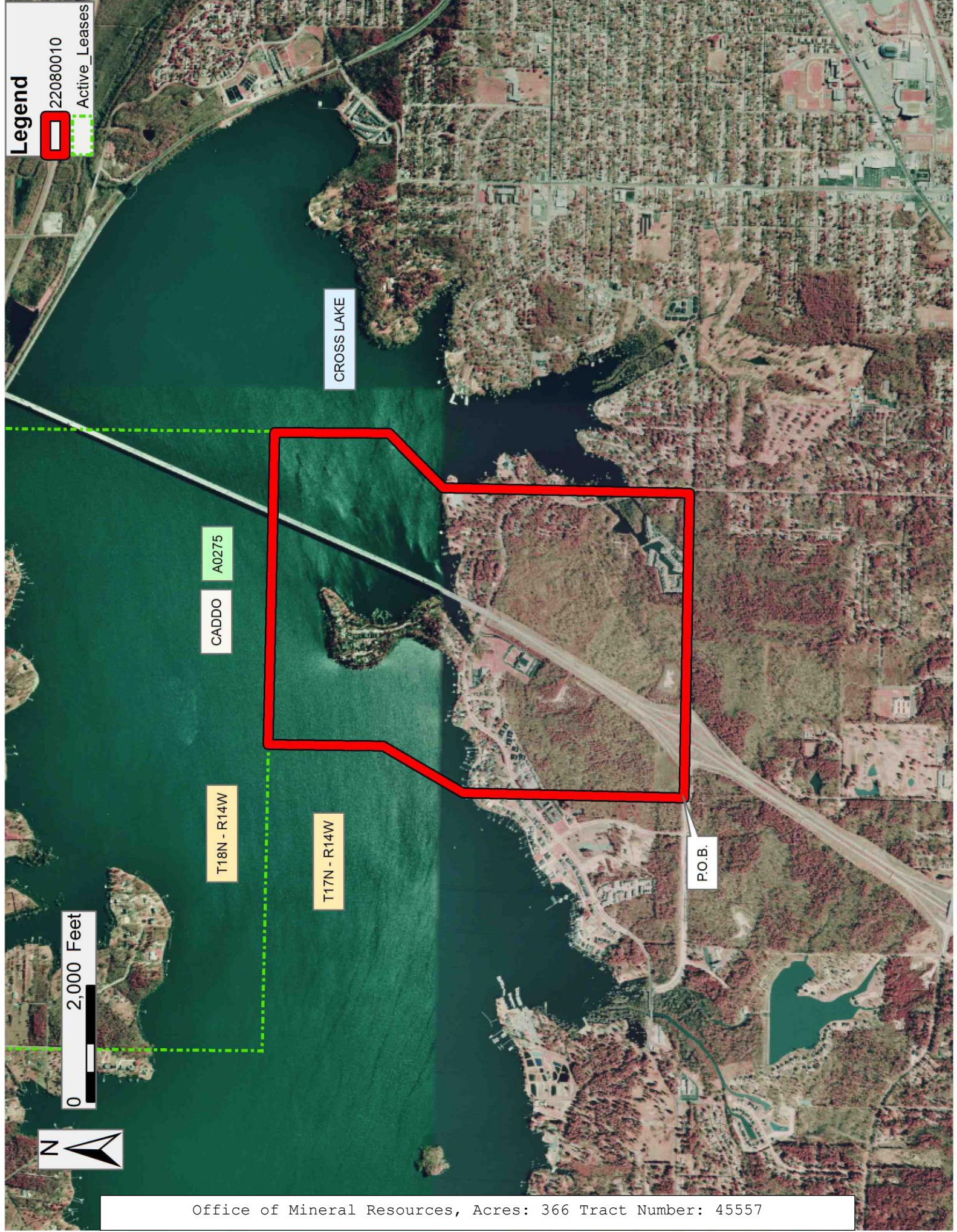
surface of other lands or by the pooling or unitization of the leased premises with other land, lease or leases in the area.

Applicant: CYPRESS ENERGY CORPORATION

Bidder	Cash Payment	Price/ Acre	Rental	Oil	Gas	Other



**Legend**  
 22080010  
 Active\_Leases





**TRACT 45558 - Bossier Parish, Louisiana**

All of the lands now or formerly constituting the beds and bottoms of all water bodies of every nature and description as to which title is vested in the State of Louisiana, together with all islands arising therein and other lands formed by accretion or by reliction, where allowed by law, excepting tax adjudicated lands, and not presently under mineral lease on August 10, 2022, situated in Bossier Parish, Louisiana, and more particularly described as follows: Beginning at a point on the north boundary of State Lease No. 20881 to a point having Coordinates of X = 1,651,554.59 and Y = 646,600.00, said point also being the Southwest corner of State Lease No. 21838, said point also within the boundary of the HA RA SUW, adopted by the Office of Conservation Order NO. 8-N-4; thence North 00 degrees 29 minutes 36 seconds East 5,241.54 feet along the boundary of said State Lease No. 21838 to a point having Coordinates of X = 1,651,599.71 and Y = 651,841.35, said point being on the North line of said HA RA SUW; thence South 89 degrees 30 minutes 36 seconds East 5,053.70 feet along the north line of said HA RA SUW to a point on the east line of HA RA SUS, adopted by the Office of Conservation Order NO. 8-N-20 having Coordinates of X = 1,656,663.23 and Y = 651,798.13; thence North 00 degrees 52 minutes 57 seconds East 2,517.53 feet along the west boundary of said HA RA SUS to a point having Coordinates of X = 1,656,692.01 and Y = 654,315.36; thence South 89 degrees 12 minutes 20 seconds East 4,656.61 feet along the north line of said HA RA SUS to a point having Coordinates of X = 1,661,348.17 and Y = 654,250.80; thence continue around the boundary of said HA RA SUS the following courses and distances: North 14 degrees 10 minutes 37 seconds West 92.50 feet, North 15 degrees 53 minutes 54 seconds West 188.77 feet, North 13 degrees 29 minutes 03 seconds West 88.30 feet, North 12 degrees 05 minutes 25 seconds West 119.56 feet, North 04 degrees 42 minutes 25 seconds West 109.31 feet, North 00 degrees 15 minutes 33 seconds East 86.83 feet, North 02 degrees 56 minutes 47 seconds East 3.61 feet, North 05 degrees 17 minutes 14 seconds East 338.95 feet, North 25 degrees 58 minutes 26 seconds East 218.54 feet, North 31 degrees 16 minutes 03 seconds East 203.42 feet, North 32 degrees 45 minutes 30 seconds East 223.37 feet, North 38 degrees 50 minutes 58 seconds East 357.90 feet, North 32 degrees 57 minutes 18 seconds East 81.60 feet, North 36 degrees 17 minutes 22 seconds East 346.09 feet, thence South 00 degrees 16 minutes 24 seconds West 4,693.62 feet along the Eastern boundary of said HA RA SUS to a point having Coordinates of X = 1,662,024.52 and Y = 651,752.47; thence South 00 degrees 31 minutes 54 seconds West 5,152.69 feet to a point on the north line of State Lease No. 21354, as amended, having Coordinates of X = 1,661,976.70 and Y = 646,600.00; thence West 5,580.00 feet to a point being the Northwest corner of said State Lease No. 20881 having Coordinates of X = 1,656,396.70 and Y = 646,600.00; thence West 4,842.11 feet to the point of beginning, **LESS AND EXCEPT** any right, title, and interest in lands owned by and not under lease from the State of Louisiana, on behalf of the Bossier Parish School Board, situated in Section 16, Township 17 North, Range 12 West, Bossier Parish, Louisiana, contained within the above described tract, containing approximately **63 acres**, all as more particularly outlined on a plat on file in the Office of Mineral Resources, Department of Natural

Resources. All bearings, distances and coordinates are based on Louisiana Coordinate System of 1927, (North or South Zone), where applicable.

NOTE: The above description of the Tract nominated for lease has been provided and corrected, where required, exclusively by the nomination party. Any mineral lease selected from this Tract and awarded by the Louisiana State Mineral and Energy Board shall be without warranty of any kind, either express, implied, or statutory, including, but not limited to, the implied warranties of merchantability and fitness for a particular purpose. Should the mineral lease awarded by the Louisiana State Mineral and Energy Board be subsequently modified, cancelled or abrogated due to the existence of conflicting leases, operating agreements, private claims or other future obligations or conditions which may affect all or any portion of the leased Tract, it shall not relieve the Lessee of the obligation to pay any bonus due thereon to the Louisiana State Mineral and Energy Board, nor shall the Louisiana State Mineral and Energy Board be obligated to refund any consideration paid by the Lessor prior to such modification, cancellation, or abrogation, including, but not limited to, bonuses, rentals and royalties.

NOTE: Sect. 20 T17N R12W - HA RA SUW; Order 8-N-4; five unit wells; As of To Date: Gas Cum - approx. 28.7 BCF

NOTE: Sect. 16 & 21 T17N R12W -HA RA SUS; Order 8-N-20; two unit wells; As of To Date: Gas Cum - approx. 13 BCF

NOTE: The Office of Mineral Resources will require a minimum bonus of \$1500 per acre and a minimum royalty of 25%.

Applicant: STAFF OFFICE OF MINERAL RESOURCES

Bidder	Cash Payment	Price/ Acre	Rental	Oil	Gas	Other



Legend

- 22080012
- Active\_Leases
- Counties



BOSSIER

RED CHUTE BAYOU

SL 21838

FLAT RIVER

P.O.B.

SL 20881

SL 19756



**TRACT 45559 - Bossier Parish, Louisiana**

All of the lands now or formerly constituting the beds and bottoms of all water bodies of every nature and description as to which title is vested in the State of Louisiana, together with all islands arising therein and other lands formed by accretion or by reliction, where allowed by law, excepting tax adjudicated lands, and not presently under mineral lease on August 10, 2022, situated in Bossier Parish, Louisiana, and more particularly described as follows: Beginning at a point being the Northwest corner of the HA RA SU83, adopted by the Office of Conservation Order NO. 8-N-52, having Coordinates of X = 1,662,014.50 and Y = 657,085.40; thence South 89 degrees 10 minutes 42 seconds East 5,387.16 feet along the north line of said HA RA SU83 to a point having Coordinates of X = 1,667,401.11 and Y = 657,008.14; thence South 00 degrees 05 minutes 00 seconds West 5,411.68 feet along the East line of said HA RA SU83 to a point being its Southeast corner having Coordinates of X = 1,667,393.24 and Y = 651,596.47, said point also being the Northeast corner of HA RA SUII, adopted by the Office of Conservation Order No. 8-N-9; thence 00 degrees 33 minutes 46 seconds West 5,296.62 along the East line of said HA RA SUII to a point being its Southeast corner having Coordinates of X = 1,667,341.21 and Y = 646,300.10; thence North 88 degrees 56 minutes 01 seconds West 2,365.49 feet along the South line of said HA RA SUII to a point on the Eastern boundary of State Lease No. 19756, as amended, having Coordinates of X = 1,664,976.13 and Y = 646,344.13; thence along said State Lease No. 19756, as amended, the following: North 255.87 feet to a point having Coordinates of X = 1,664,976.13 and Y = 646,600.00, and West 2,999.43 feet to a point being its Northwest corner having Coordinates of X = 1,661,976.70 and Y = 646,600.00, said point also being on the West line of said HA RA SUII; thence North 00 degrees 31 minutes 54 seconds East 5,152.69 feet along the West line of said HA RA SUII to a point having Coordinates of X = 1,662,024.52 and Y = 651,752.47, said point also being the Southwest corner of said HA RA SU83; thence North 00 degrees 16 minutes 24 seconds East 4,693.61 feet along the West line of said HA RA SU83 to a point having Coordinates of X = 1,662,046.91 and Y = 656,446.03; thence continue North 02 degrees 54 minutes 07 seconds West 640.19 feet along the West line of said HA RA SU83 to the point of beginning, containing approximately **42 acres**, all as more particularly outlined on a plat on file in the Office of Mineral Resources, Department of Natural Resources. All bearings, distances and coordinates are based on Louisiana Coordinate System of 1927, (North or South Zone), where applicable.

NOTE: The above description of the Tract nominated for lease has been provided and corrected, where required, exclusively by the nomination party. Any mineral lease selected from this Tract and awarded by the Louisiana State Mineral and Energy Board shall be without warranty of any kind, either express, implied, or statutory, including, but not limited to, the implied warranties of merchantability and fitness for a particular purpose. Should the mineral lease awarded by the Louisiana State Mineral and Energy Board be subsequently modified, cancelled or abrogated due to the existence of conflicting leases, operating agreements, private claims or other future obligations or conditions which may affect all or any portion of the leased

Tract, it shall not relieve the Lessee of the obligation to pay any bonus due thereon to the Louisiana State Mineral and Energy Board, nor shall the Louisiana State Mineral and Energy Board be obligated to refund any consideration paid by the Lessor prior to such modification, cancellation, or abrogation, including, but not limited to, bonuses, rentals and royalties.

NOTE: Sect. 15 T17N R12W - HA RA SU83; Order 8-N-52; Three cross lateral unit wells; As of To-Date: Gas Cum - approx. 3.35 BCF

NOTE: Sect. 22 T17N R12W - HA RA SUII; Order 8-N-9; Three cross lateral unit wells; As of To Date: Gas Cum - approx. 2.58 BCF

NOTE: The Office of Mineral Resources will require a minimum bonus of \$1500 per acre and a minimum royalty of 25%.

Applicant: STAFF OFFICE OF MINERAL RESOURCES

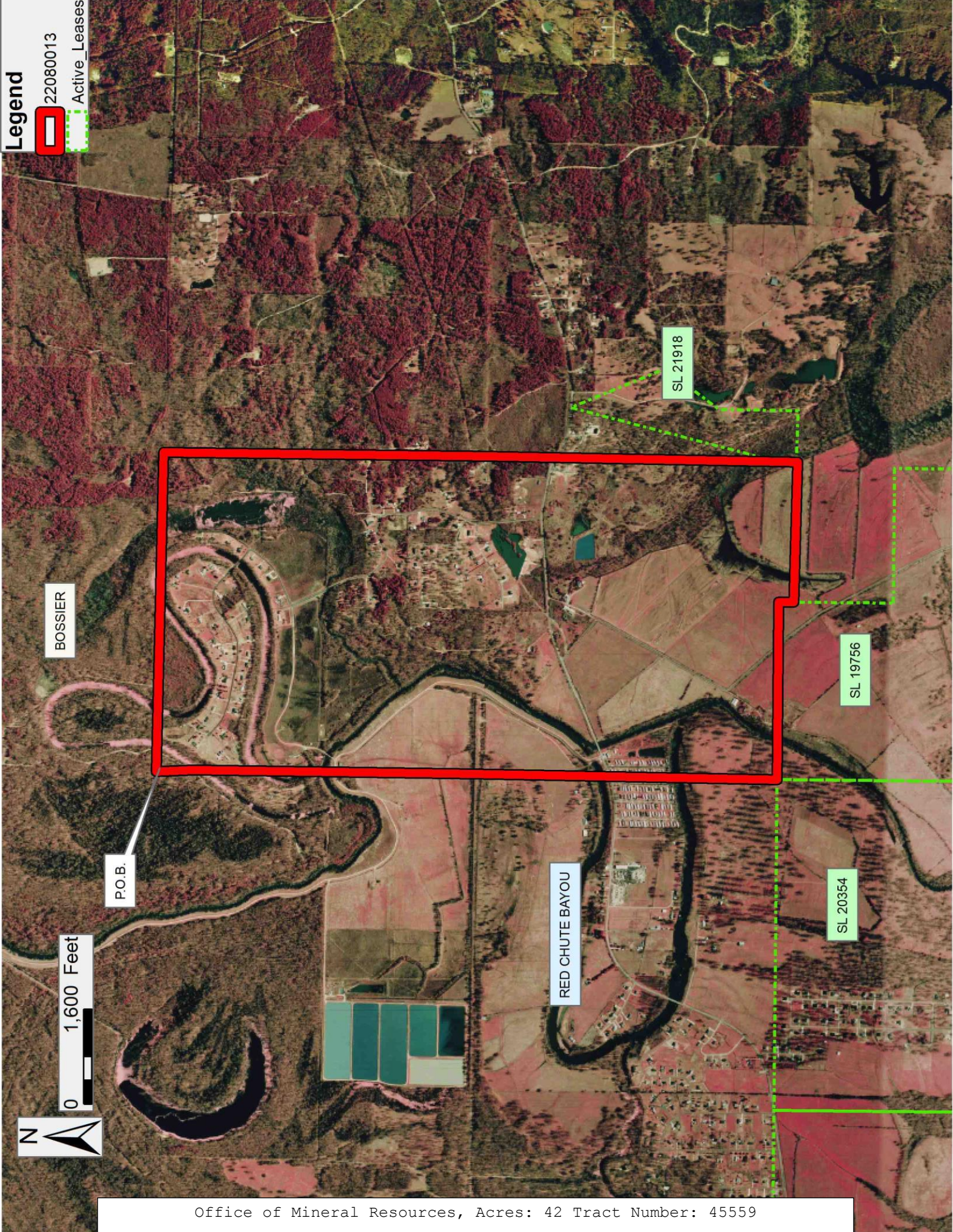
Bidder	Cash Payment	Price/ Acre	Rental	Oil	Gas	Other



**Legend**

 22080013

 Active\_Leases





**TRACT 45560 - Bossier and Caddo Parishes, Louisiana**

All of the lands now or formerly constituting the beds and bottoms of all water bodies of every nature and description as to which title is vested in the State of Louisiana, together with all islands arising therein and other lands formed by accretion or by reliction, where allowed by law, excepting tax adjudicated lands, and not presently under mineral lease on August 10, 2022, situated in Bossier and Caddo Parishes, Louisiana, and more particularly described as follows: Beginning at the most western Southwest corner of State Lease No. 11155, as amended, having Coordinates of X = 1,630,100.00 and Y = 636,301.29; thence along the boundaries of said State Lease No. 11155 the following courses: South 89 degrees 22 minutes 35 seconds East 5,270.32 feet to a point having Coordinates of X = 1,635,370.01 and Y = 636,243.93, Easterly approximately 582 feet to a point and Southerly approximately 4,457 feet to its most southern Southwest corner; thence West approximately 204 feet to the Northeast corner of State Lease No. 11855 having Coordinates of X = 1,635,700.00 and Y = 631,780.00; thence West 3,960.00 feet along the North boundary of said State Lease No. 11855 to its Northwest corner and a point on the East boundary of State Lease No. 19928 having Coordinates of X = 1,631,740.00 and Y = 631,780.00; thence North 36 degrees 52 minutes 12 seconds West approximately 2,738 feet along the East boundary of said State Lease No. 19928 to its Northern tip; thence North approximately 2,335 feet to the point of beginning, containing approximately **80 acres**, all as more particularly outlined on a plat on file in the Office of Mineral Resources, Department of Natural Resources. All bearings, distances and coordinates are based on Louisiana Coordinate System of 1927, (North or South Zone), where applicable.

NOTE: The above description of the Tract nominated for lease has been provided and corrected, where required, exclusively by the nomination party. Any mineral lease selected from this Tract and awarded by the Louisiana State Mineral and Energy Board shall be without warranty of any kind, either express, implied, or statutory, including, but not limited to, the implied warranties of merchantability and fitness for a particular purpose. Should the mineral lease awarded by the Louisiana State Mineral and Energy Board be subsequently modified, cancelled or abrogated due to the existence of conflicting leases, operating agreements, private claims or other future obligations or conditions which may affect all or any portion of the leased Tract, it shall not relieve the Lessee of the obligation to pay any bonus due thereon to the Louisiana State Mineral and Energy Board, nor shall the Louisiana State Mineral and Energy Board be obligated to refund any consideration paid by the Lessor prior to such modification, cancellation, or abrogation, including, but not limited to, bonuses, rentals and royalties.

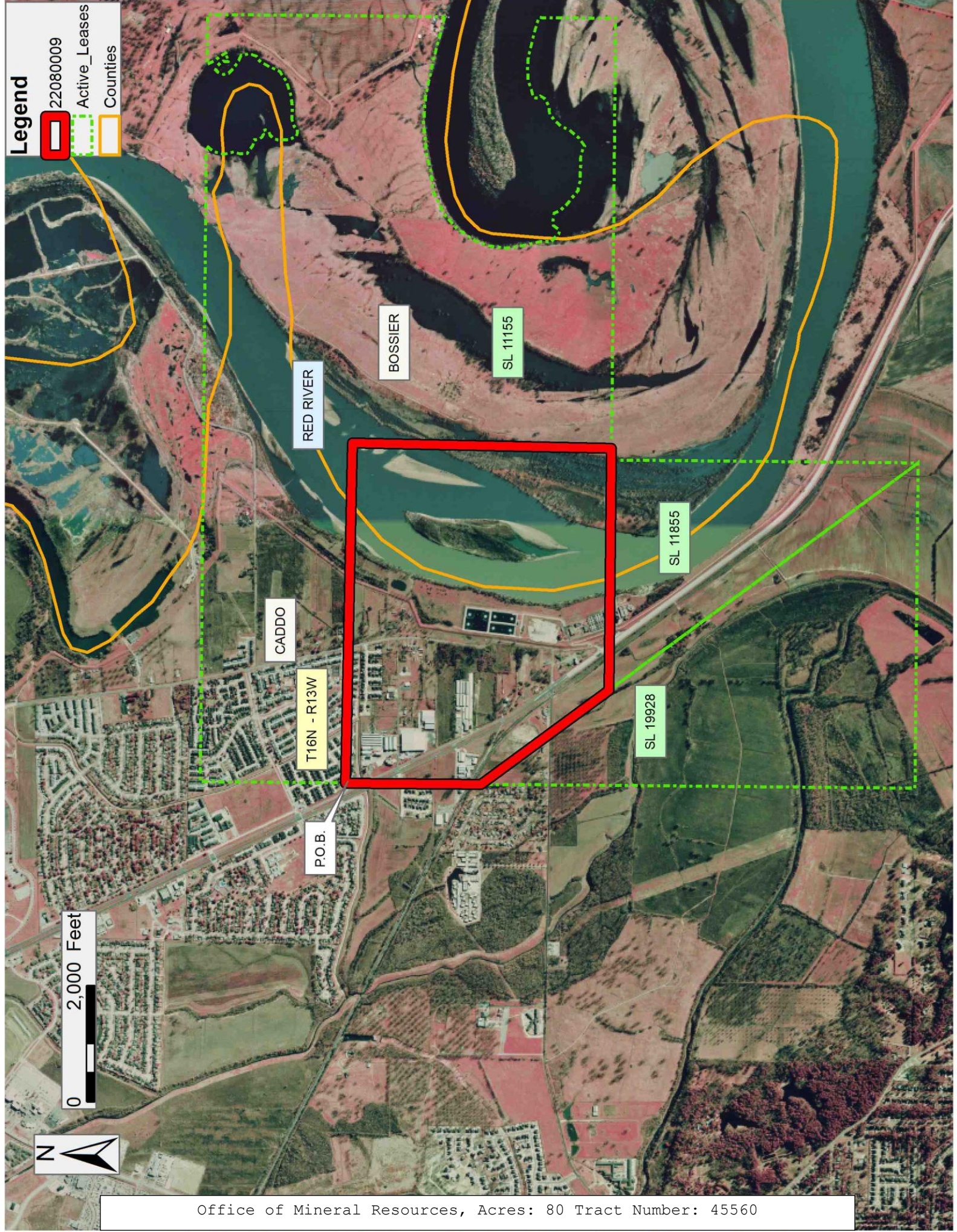
Applicant: CYPRESS ENERGY CORPORATION

Bidder	Cash Payment	Price/ Acre	Rental	Oil	Gas	Other



**Legend**

- 22080009
- Active\_Leases
- Counties





**TRACT 45561 - Caddo and De Soto Parishes, Louisiana**

All of the lands now or formerly constituting the beds and bottoms of all water bodies of every nature and description as to which title is vested in the State of Louisiana, together with all islands arising therein and other lands formed by accretion or by reliction, where allowed by law, excepting tax adjudicated lands, and not presently under mineral lease on August 10, 2022, situated in Caddo and De Soto Parishes, Louisiana, and more particularly described as follows: Beginning at a point on the south boundary of State Lease No. 20356 having Coordinates of X = 1,620,230.24 and Y = 605,376.79; thence South 89 degrees 03 minutes 50 seconds East 4,853.11 feet along the south boundary of said State Lease No. 20356 to its Southeast corner and the Southwest corner of State Lease No. 19929 having Coordinates of X = 1,625,082.70 and Y = 605,297.50; thence South 89 degrees 03 minutes 50 seconds East 10.24 feet along the south boundary of said State Lease No. 19929 to the Northwest corner of State Lease No. 20800 having Coordinates of X = 1,625,092.94 and Y = 605,297.33; thence along the boundaries of said State Lease No. 20800 the following courses: South 00 degrees 40 minutes 19 seconds West 3,422.41 feet to a point having Coordinates of X = 1,625,052.81 and Y = 601,875.16 and South 09 degrees 26 minutes 42 seconds East 1,755.61 feet to a point on the north boundary of State Lease No. 18371 having Coordinates of X = 1,625,340.90 and Y = 600,143.36; thence North 89 degrees 16 minutes 30 seconds West 5,173.62 feet along the north boundary of said State Lease No. 18371 to the Southeast corner of State Lease No. 21983 having Coordinates of X = 1,620,167.70 and Y = 600,208.82; thence North 00 degrees 41 minutes 36 seconds East 5,168.36 feet along the east boundary of said State Lease No. 21983 to the point of beginning, containing approximately **377 acres**, all as more particularly outlined on a plat on file in the Office of Mineral Resources, Department of Natural Resources. All bearings, distances and coordinates are based on Louisiana Coordinate System of 1927, (North or South Zone), where applicable.

NOTE: The above description of the Tract nominated for lease has been provided and corrected, where required, exclusively by the nomination party. Any mineral lease selected from this Tract and awarded by the Louisiana State Mineral and Energy Board shall be without warranty of any kind, either express, implied, or statutory, including, but not limited to, the implied warranties of merchantability and fitness for a particular purpose. Should the mineral lease awarded by the Louisiana State Mineral and Energy Board be subsequently modified, cancelled or abrogated due to the existence of conflicting leases, operating agreements, private claims or other future obligations or conditions which may affect all or any portion of the leased Tract, it shall not relieve the Lessee of the obligation to pay any bonus due thereon to the Louisiana State Mineral and Energy Board, nor shall the Louisiana State Mineral and Energy Board be obligated to refund any consideration paid by the Lessor prior to such modification, cancellation, or abrogation, including, but not limited to, bonuses, rentals and royalties.

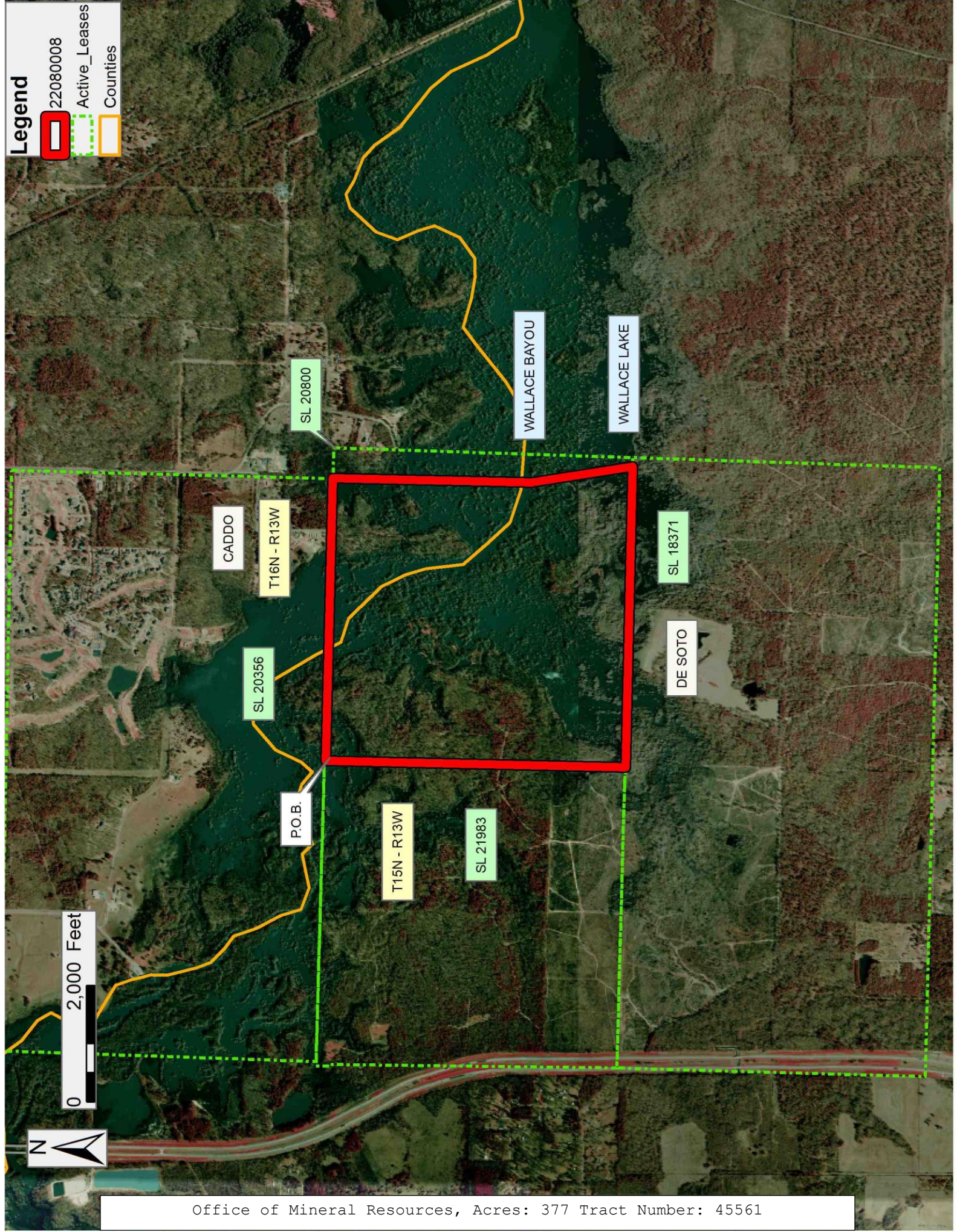
Applicant: CYPRESS ENERGY CORPORATION

Bidder	Cash Payment	Price/ Acre	Rental	Oil	Gas	Other



**Legend**

- 22080008
- Active\_Leases
- Counties





**TRACT 45562 - Lafayette and Vermilion Parishes, Louisiana**

All of the lands now or formerly constituting the beds and bottoms of all water bodies of every nature and description as to which title is vested in the State of Louisiana, together with all islands arising therein and other lands formed by accretion or by reliction, where allowed by law, excepting tax adjudicated lands, and not presently under mineral lease on August 10, 2022, situated in Lafayette and Vermilion Parishes, Louisiana, and more particularly described as follows: Beginning a point having Coordinates of X = 1,749,300.00 and Y = 534,300.00; thence East 12,300.00 feet to a point having Coordinates of X = 1,761,600.00 and Y = 534,300.00; thence South 5,200.00 feet to a point having Coordinates of X = 1,761,600.00 and Y = 529,100.00; thence West 12,300.00 feet to a point having Coordinates of X = 1,749,300.00 and Y = 529,100.00; thence North 5,200.00 feet to the point of beginning, **LESS AND EXCEPT** any portion of Operating Agreement No. A0055 that may lie within the boundary of the above described tract, containing approximately **29 acres**, all as more particularly outlined on a plat on file in the Office of Mineral Resources, Department of Natural Resources. All bearings, distances and coordinates are based on Louisiana Coordinate System of 1927, (North or South Zone), where applicable.

NOTE: The above description of the Tract nominated for lease has been provided and corrected, where required, exclusively by the nomination party. Any mineral lease selected from this Tract and awarded by the Louisiana State Mineral and Energy Board shall be without warranty of any kind, either express, implied, or statutory, including, but not limited to, the implied warranties of merchantability and fitness for a particular purpose. Should the mineral lease awarded by the Louisiana State Mineral and Energy Board be subsequently modified, cancelled or abrogated due to the existence of conflicting leases, operating agreements, private claims or other future obligations or conditions which may affect all or any portion of the leased Tract, it shall not relieve the Lessee of the obligation to pay any bonus due thereon to the Louisiana State Mineral and Energy Board, nor shall the Louisiana State Mineral and Energy Board be obligated to refund any consideration paid by the Lessor prior to such modification, cancellation, or abrogation, including, but not limited to, bonuses, rentals and royalties.

Applicant: BLUE ENERGY, LTD.

Bidder	Cash Payment	Price/ Acre	Rental	Oil	Gas	Other

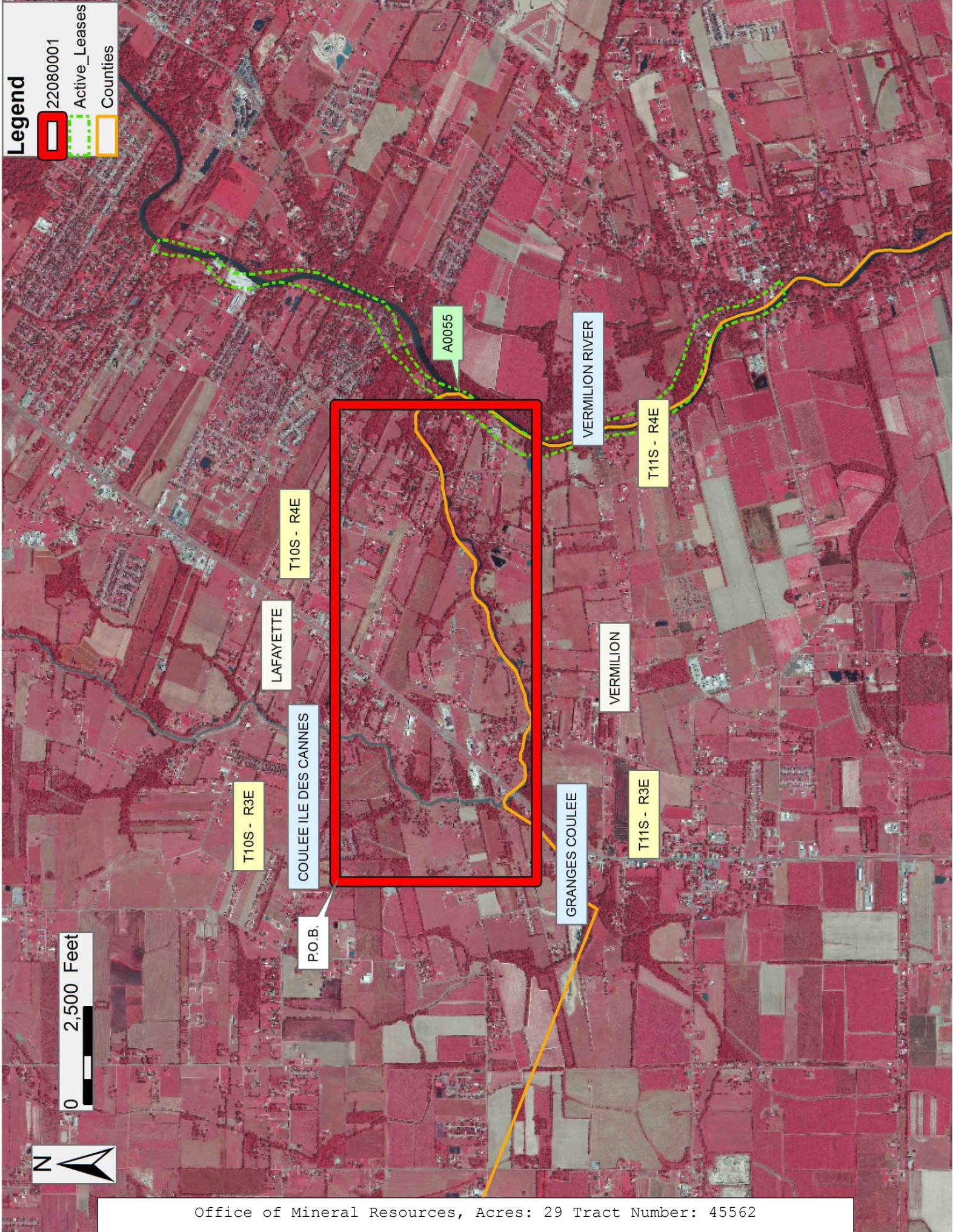


**Legend**

22080001

Active\_Leases

Counties





**TRACT 45563 - Plaquemines and St. Bernard Parishes, Louisiana**

All of the lands now or formerly constituting the beds and bottoms of all water bodies of every nature and description as to which title is vested in the State of Louisiana, together with all islands arising therein and other lands formed by accretion or by reliction, where allowed by law, excepting tax adjudicated lands, and not presently under mineral lease on August 10, 2022, situated in Plaquemines and St. Bernard Parishes, Louisiana, and more particularly described as follows: Beginning at a point having Coordinates of X = 2,542,636.64 and Y = 378,734.69; thence East 16,205.58 feet to a point having Coordinates of X = 2,558,842.22 and Y = 378,734.69; thence South 13,629.35 feet to a point having Coordinates of X = 2,558,842.22 and Y = 365,105.34; thence West approximately 4,270 feet to a point on the Northern boundary of State Lease No. 195, as amended; thence Northwesterly, Southwesterly, Northwesterly and Southwesterly along the northern boundary of said State Lease No. 195 to a point of intersection with a Coordinate of Y = 365,105.34; thence West approximately 2,121 feet to a point having Coordinates of X = 2,542,636.64 and Y = 365,105.34; thence North 13,629.35 feet to the point of beginning, **LESS AND EXCEPT** any right, title, and interest in lands owned by and not under lease from the State of Louisiana, on behalf of the St. Bernard Parish and Plaquemines Parish School Boards, situated in Section 16, Township 16 South, Range 16 East, St. Mary Parish and Plaquemines Parish, Louisiana, contained within the above described tract, containing approximately **2,433 acres**, all as more particularly outlined on a plat on file in the Office of Mineral Resources, Department of Natural Resources. All bearings, distances and coordinates are based on Louisiana Coordinate System of 1927, (North or South Zone), where applicable.

NOTE: The above description of the Tract nominated for lease has been provided and corrected, where required, exclusively by the nomination party. Any mineral lease selected from this Tract and awarded by the Louisiana State Mineral and Energy Board shall be without warranty of any kind, either express, implied, or statutory, including, but not limited to, the implied warranties of merchantability and fitness for a particular purpose. Should the mineral lease awarded by the Louisiana State Mineral and Energy Board be subsequently modified, cancelled or abrogated due to the existence of conflicting leases, operating agreements, private claims or other future obligations or conditions which may affect all or any portion of the leased Tract, it shall not relieve the Lessee of the obligation to pay any bonus due thereon to the Louisiana State Mineral and Energy Board, nor shall the Louisiana State Mineral and Energy Board be obligated to refund any consideration paid by the Lessor prior to such modification, cancellation, or abrogation, including, but not limited to, bonuses, rentals and royalties.

NOTE: The State of Louisiana does hereby reserve, and this lease shall be subject to, the imprescriptible right of surface use in the nature of a servitude in favor of the Department of Natural Resources, including its Offices and Commissions, for the sole purpose of implementing, constructing, servicing and maintaining approved coastal zone management and/or

restoration projects. Utilization of any and all rights derived under this lease by the mineral lessee, its agents, successors or assigns, shall not interfere with nor hinder the reasonable surface use by the Department of Natural Resources, its Offices or Commissions, as herein above reserved.

Applicant: CYPRESS ENERGY CORPORATION

Bidder	Cash Payment	Price/ Acre	Rental	Oil	Gas	Other

**Legend**

22080004

Active\_Leases

Counties



0 2,500 Feet

ST BERNARD

BOTTLE LAGOON

P.O.B.

LAKE CALLEBASSE

BAYOU TERRE AUX BOEUFs

SL 195

PLAQUEMINES

BLACK BAY



**TRACT 45564 - Plaquemines and St. Bernard Parishes, Louisiana**

All of the lands now or formerly constituting the beds and bottoms of all water bodies of every nature and description as to which title is vested in the State of Louisiana, together with all islands arising therein and other lands formed by accretion or by reliction, where allowed by law, excepting tax adjudicated lands, and not presently under mineral lease on August 10, 2022, situated in Plaquemines and St. Bernard Parishes, Louisiana, and more particularly described as follows: Beginning at a point having Coordinates of X = 2,558,842.22 and Y = 378,734.69; thence East 9,822.36 feet to a point having Coordinates of X = 2,568,664.58 and Y = 378,734.69; thence South 13,629.35 feet to a point having Coordinates of X = 2,568,664.58 and Y = 365,105.34; thence West 9,822.36 feet to a point having Coordinates of X = 2,558,842.22 and Y = 365,105.34; thence North 13,629.35 feet to the point of beginning, containing approximately **2,494 acres**, all as more particularly outlined on a plat on file in the Office of Mineral Resources, Department of Natural Resources. All bearings, distances and coordinates are based on Louisiana Coordinate System of 1927, (North or South Zone), where applicable.

NOTE: The above description of the Tract nominated for lease has been provided and corrected, where required, exclusively by the nomination party. Any mineral lease selected from this Tract and awarded by the Louisiana State Mineral and Energy Board shall be without warranty of any kind, either express, implied, or statutory, including, but not limited to, the implied warranties of merchantability and fitness for a particular purpose. Should the mineral lease awarded by the Louisiana State Mineral and Energy Board be subsequently modified, cancelled or abrogated due to the existence of conflicting leases, operating agreements, private claims or other future obligations or conditions which may affect all or any portion of the leased Tract, it shall not relieve the Lessee of the obligation to pay any bonus due thereon to the Louisiana State Mineral and Energy Board, nor shall the Louisiana State Mineral and Energy Board be obligated to refund any consideration paid by the Lessor prior to such modification, cancellation, or abrogation, including, but not limited to, bonuses, rentals and royalties.

NOTE: The State of Louisiana does hereby reserve, and this lease shall be subject to, the imprescriptible right of surface use in the nature of a servitude in favor of the Department of Natural Resources, including its Offices and Commissions, for the sole purpose of implementing, constructing, servicing and maintaining approved coastal zone management and/or restoration projects. Utilization of any and all rights derived under this lease by the mineral lessee, its agents, successors or assigns, shall not interfere with nor hinder the reasonable surface use by the Department of Natural Resources, its Offices or Commissions, as herein above reserved.

NOTE: This tract is located in an area designated by the Louisiana Legislature or the Wildlife and Fisheries Commission as a Public Oyster Seed Ground, Reservation, or area of Calcasieu or Sabine Lake. Proposed projects occurring in these areas will be evaluated on a case by case basis by Louisiana Department of Wildlife & Fisheries. Modifications to proposed

project features including, but not limited to, access routes, well sites, flowlines, and appurtenant structures may be required by the Louisiana Department of Wildlife and Fisheries. In addition, compensatory mitigation will be required to offset unavoidable habitat impacts.

Applicant: CYPRESS ENERGY CORPORATION

Bidder	Cash Payment	Price/ Acre	Rental	Oil	Gas	Other



**Legend**

22080005

Counties



0 2,500 Feet

P.O.B.

ST BERNARD

LAKE CALLEBASSE

DRUM BAY

BLACK BAY

BAYOU TERRE AUX BOEUFs

PLAQUEMINES

**TRACT 45565 - Portion of Block 1, Main Pass Area, Revised, St. Bernard Parish, Louisiana**

All of the lands now or formerly constituting the beds and bottoms of all water bodies of every nature and description as to which title is vested in the State of Louisiana, together with all islands arising therein and other lands formed by accretion or by reliction, where allowed by law, excepting tax adjudicated lands, and not presently under mineral lease on August 10, 2022, situated in St. Bernard Parish, Louisiana, and more particularly described as follows: Beginning at a point having Coordinates of X = 2,586,366.06 and Y = 378,734.69; thence South 4,734.69 feet to a point on the North boundary of State Lease No. 2192, as amended having Coordinates of X = 2,586,366.06 and Y = 374,000.00; thence along the boundaries of said State Lease No. 2192 the following courses: West 2,476.06 feet to a point having Coordinates of X = 2,583,890.00 and Y = 374,000.00 and South 2,212.41 feet to a having Coordinates of X = 2,583,890.00 and Y = 371,787.60; thence West 15,225.41 feet to a point having Coordinates of X = 2,568,664.58 and Y = 371,787.60; thence North 6,947.10 feet to a point having Coordinates of X = 2,568,664.58 and Y = 378,734.69; thence East 17,701.48 feet to the point of beginning, containing approximately **2,326 acres**, all as more particularly outlined on a plat on file in the Office of Mineral Resources, Department of Natural Resources. All bearings, distances and coordinates are based on Louisiana Coordinate System of 1927, (North or South Zone), where applicable.

NOTE: The above description of the Tract nominated for lease has been provided and corrected, where required, exclusively by the nomination party. Any mineral lease selected from this Tract and awarded by the Louisiana State Mineral and Energy Board shall be without warranty of any kind, either express, implied, or statutory, including, but not limited to, the implied warranties of merchantability and fitness for a particular purpose. Should the mineral lease awarded by the Louisiana State Mineral and Energy Board be subsequently modified, cancelled or abrogated due to the existence of conflicting leases, operating agreements, private claims or other future obligations or conditions which may affect all or any portion of the leased Tract, it shall not relieve the Lessee of the obligation to pay any bonus due thereon to the Louisiana State Mineral and Energy Board, nor shall the Louisiana State Mineral and Energy Board be obligated to refund any consideration paid by the Lessor prior to such modification, cancellation, or abrogation, including, but not limited to, bonuses, rentals and royalties.

NOTE: The State of Louisiana does hereby reserve, and this lease shall be subject to, the imprescriptible right of surface use in the nature of a servitude in favor of the Department of Natural Resources, including its Offices and Commissions, for the sole purpose of implementing, constructing, servicing and maintaining approved coastal zone management and/or restoration projects. Utilization of any and all rights derived under this lease by the mineral lessee, its agents, successors or assigns, shall not interfere with nor hinder the reasonable surface use by the Department of Natural Resources, its Offices or Commissions, as herein above reserved.



NOTE: This tract is located in an area designated by the Louisiana Legislature or the Wildlife and Fisheries Commission as a Public Oyster Seed Ground, Reservation, or area of Calcasieu or Sabine Lake. Proposed projects occurring in these areas will be evaluated on a case by case basis by Louisiana Department of Wildlife & Fisheries. Modifications to proposed project features including, but not limited to, access routes, well sites, flowlines, and appurtenant structures may be required by the Louisiana Department of Wildlife and Fisheries. In addition, compensatory mitigation will be required to offset unavoidable habitat impacts.

Applicant: CYPRESS ENERGY CORPORATION

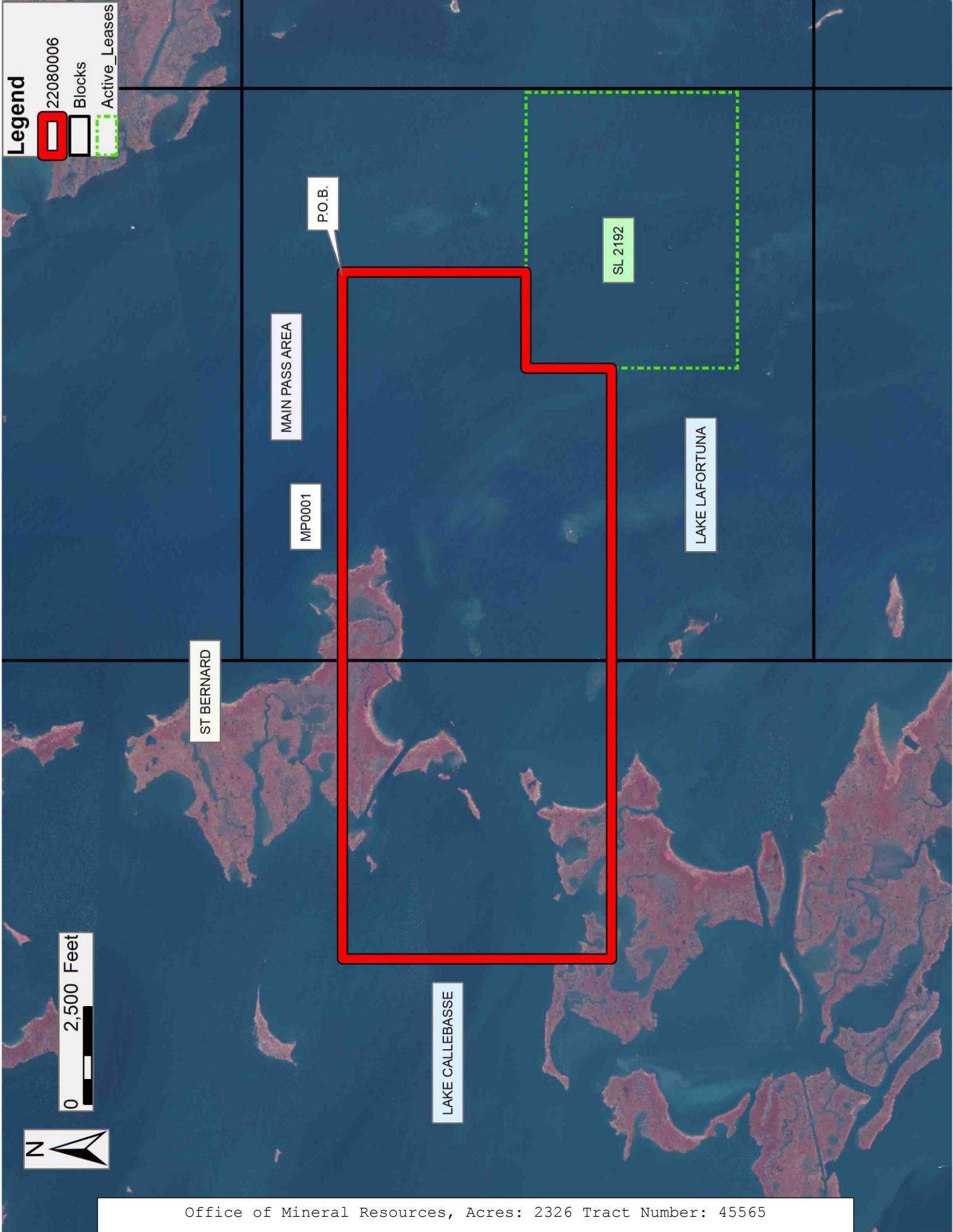
Bidder	Cash Payment	Price/ Acre	Rental	Oil	Gas	Other

**Legend**

22080006

Blocks

Active\_Leases





**TRACT 45566 - Portion of Blocks 1, and 12, Main Pass Area, Revised, St. Bernard Parish, Louisiana**

All of the lands now or formerly constituting the beds and bottoms of all water bodies of every nature and description as to which title is vested in the State of Louisiana, together with all islands arising therein and other lands formed by accretion or by reliction, where allowed by law, excepting tax adjudicated lands, and not presently under mineral lease on August 10, 2022, situated in St. Bernard Parish, Louisiana, and more particularly described as follows: Beginning at a point having Coordinates of X = 2,568,664.58 and Y = 371,787.60; thence East 15,225.41 feet to a point on the West boundary of State Lease No. 2192, as amended having Coordinates of X = 2,583,890.00 and Y = 371,787.60; thence along the boundaries of said State Lease No. 2192 the following courses: South 3,237.59 feet to a point having Coordinates of X = 2,583,890.00 and Y = 368,550.00 and East 2,476.06 feet to a having Coordinates of X = 2,586,366.06 and Y = 368,550.00; thence South 3,444.66 feet to a point having Coordinates of X = 2,586,366.06 and Y = 365,105.34; thence West 17,701.48 feet to a point having Coordinates of X = 2,568,664.58 and Y = 365,105.34; thence North 6,682.26 feet to the point of beginning, containing approximately **2,039 acres**, all as more particularly outlined on a plat on file in the Office of Mineral Resources, Department of Natural Resources. All bearings, distances and coordinates are based on Louisiana Coordinate System of 1927, (North or South Zone), where applicable.

NOTE: The above description of the Tract nominated for lease has been provided and corrected, where required, exclusively by the nomination party. Any mineral lease selected from this Tract and awarded by the Louisiana State Mineral and Energy Board shall be without warranty of any kind, either express, implied, or statutory, including, but not limited to, the implied warranties of merchantability and fitness for a particular purpose. Should the mineral lease awarded by the Louisiana State Mineral and Energy Board be subsequently modified, cancelled or abrogated due to the existence of conflicting leases, operating agreements, private claims or other future obligations or conditions which may affect all or any portion of the leased Tract, it shall not relieve the Lessee of the obligation to pay any bonus due thereon to the Louisiana State Mineral and Energy Board, nor shall the Louisiana State Mineral and Energy Board be obligated to refund any consideration paid by the Lessor prior to such modification, cancellation, or abrogation, including, but not limited to, bonuses, rentals and royalties.

NOTE: The State of Louisiana does hereby reserve, and this lease shall be subject to, the imprescriptible right of surface use in the nature of a servitude in favor of the Department of Natural Resources, including its Offices and Commissions, for the sole purpose of implementing, constructing, servicing and maintaining approved coastal zone management and/or restoration projects. Utilization of any and all rights derived under this lease by the mineral lessee, its agents, successors or assigns, shall not interfere with nor hinder the reasonable surface use by the Department of Natural Resources, its Offices or Commissions, as herein above reserved.

NOTE: This tract is located in an area designated by the Louisiana Legislature or the Wildlife and Fisheries Commission as a Public Oyster Seed Ground, Reservation, or area of Calcasieu or Sabine Lake. Proposed projects occurring in these areas will be evaluated on a case by case basis by Louisiana Department of Wildlife & Fisheries. Modifications to proposed project features including, but not limited to, access routes, well sites, flowlines, and appurtenant structures may be required by the Louisiana Department of Wildlife and Fisheries. In addition, compensatory mitigation will be required to offset unavoidable habitat impacts.

Applicant: CYPRESS ENERGY CORPORATION

Bidder	Cash Payment	Price/ Acre	Rental	Oil	Gas	Other



