

TRACT 45567 - Plaquemines Parish, Louisiana

All of the lands now or formerly constituting the beds and bottoms of all water bodies of every nature and description as to which title is vested in the State of Louisiana, together with all islands arising therein and other lands formed by accretion or by reliction, where allowed by law, excepting tax adjudicated lands, and not presently under mineral lease on August 10, 2022, situated in Plaquemines Parish, Louisiana, and more particularly described as follows: Beginning at a point having Coordinates of X = 2,572,333.11 and Y = 249,063.21, said point being the westernmost corner of State Operating Agreement A0220; thence South 60 degrees 13 minutes 45 seconds East 522.32 feet along the southern boundary of said State Operating Agreement A0220 to a point having Coordinates of X = 2,572,786.49 and Y = 248,803.85, said point being the southernmost corner of said State Operating Agreement A0220, said point also being the westernmost corner of State Lease No. 13566, as amended; thence South 60 degrees 13 minutes 45 seconds East 881.17 feet along the southern boundary of said State Lease No. 13566, as amended, to a point having Coordinates of X = 2,573,551.37 and Y = 248,366.33, said point being the southernmost corner of said State Lease No. 13566, as amended; thence South 62 degrees 53 minutes 51 seconds East 2,342.70 feet to a point having Coordinates of X = 2,575,636.82 and Y = 247,299.04; thence North 32 degrees 13 minutes 14 seconds East 316.35 feet to a point having Coordinates of X = 2,575,805.49 and Y = 247,566.67; thence North 41 degrees 47 minutes 27 seconds East 217.25 feet to a point having Coordinates of X = 2,575,950.27 and Y = 247,728.65; thence North 58 degrees 03 minutes 10 seconds East 288.73 feet to a point having Coordinates of X = 2,576,195.27 and Y = 247,881.43; thence North 52 degrees 51 minutes 27 seconds East 319.49 feet to a point having Coordinates of X = 2,576,449.95 and Y = 248,074.34; thence North 60 degrees 24 minutes 51 seconds East 908.94 feet to a point having Coordinates of X = 2,577,240.38 and Y = 248,523.11; thence North 34 degrees 04 minutes 41 seconds East 552.93 feet to a point having Coordinates of X = 2,577,550.20 and Y = 248,981.09; thence South 58 degrees 34 minutes 35 seconds East 1,454.06 feet to a point having Coordinates of X = 2,578,791.00 and Y = 248,223.00; thence South 16 degrees 24 minutes 48 seconds East 3,514.21 feet to a point having Coordinates of X = 2,579,784.00 and Y = 244,852.00; thence West 3,260.00 feet to a point having Coordinates of X = 2,576,524.00 and Y = 244,852.00; thence South 4,711.00 feet to a point having Coordinates of X = 2,576,524.00 and Y = 240,141.00; thence West approximately 5,327 feet to a point on an eastern boundary of State Lease No. 3212, as amended; thence along the eastern and northern boundaries of said State Lease No. 3212, as amended, the following bearings and distances, to wit: Northerly approximately 2,410 feet to a point being the northeast corner said State Lease No. 3212, as amended; and Westerly approximately 1,275 feet to a point on an eastern boundary of State Lease No. 192, as amended; thence northerly, easterly, and northerly approximately 10,500 feet along said eastern boundary of said State Lease No. 192, as amended, to point having a Coordinate of X = 2,571,197.00; thence North 12 feet, more or less, to a point having Coordinates of X = 2,571,197.00 and Y = 249,344.25; thence East 644.81 feet to a point having Coordinates of X = 2,571,841.81 and Y = 249,344.25; thence South 60 degrees 13 minutes 44 seconds East 566.00 feet

to the point of beginning, containing approximately **1,303 acres**, all as more particularly outlined on a plat on file in the Office of Mineral Resources, Department of Natural Resources. All bearings, distances and coordinates are based on Louisiana Coordinate System of 1927, (North or South Zone), where applicable.

NOTE: The above description of the Tract nominated for lease has been provided and corrected, where required, exclusively by the nomination party. Any mineral lease selected from this Tract and awarded by the Louisiana State Mineral and Energy Board shall be without warranty of any kind, either express, implied, or statutory, including, but not limited to, the implied warranties of merchantability and fitness for a particular purpose. Should the mineral lease awarded by the Louisiana State Mineral and Energy Board be subsequently modified, cancelled or abrogated due to the existence of conflicting leases, operating agreements, private claims or other future obligations or conditions which may affect all or any portion of the leased Tract, it shall not relieve the Lessee of the obligation to pay any bonus due thereon to the Louisiana State Mineral and Energy Board, nor shall the Louisiana State Mineral and Energy Board be obligated to refund any consideration paid by the Lessor prior to such modification, cancellation, or abrogation, including, but not limited to, bonuses, rentals and royalties.

NOTE: The State of Louisiana does hereby reserve, and this lease shall be subject to, the imprescriptible right of surface use in the nature of a servitude in favor of the Department of Natural Resources, including its Offices and Commissions, for the sole purpose of implementing, constructing, servicing and maintaining approved coastal zone management and/or restoration projects. Utilization of any and all rights derived under this lease by the mineral lessee, its agents, successors or assigns, shall not interfere with nor hinder the reasonable surface use by the Department of Natural Resources, its Offices or Commissions, as herein above reserved.

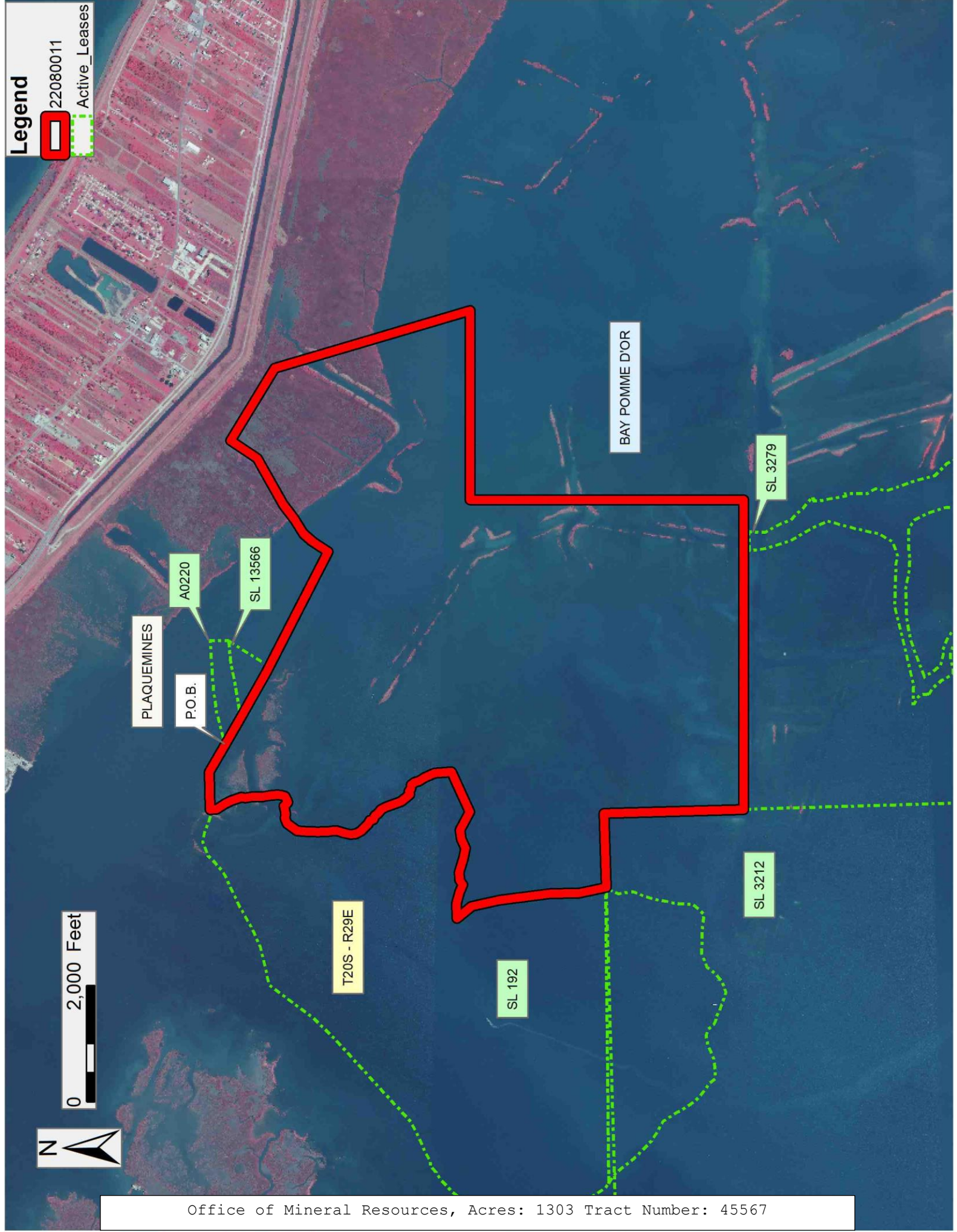
Applicant: ROBERT A. SCHROEDER, INC.

Bidder	Cash Payment	Price/ Acre	Rental	Oil	Gas	Other

Legend

22080011

Active_Leases



0 2,000 Feet

