

TRACT 45570 - Caddo Parish, Louisiana

All of the lands now or formerly constituting the beds and bottoms of all water bodies of every nature and description as to which title is vested in the State of Louisiana, together with all islands arising therein and other lands formed by accretion or by reliction, where allowed by law, excepting tax adjudicated lands, and not presently under mineral lease on September 14, 2022, situated in Caddo Parish, Louisiana, and more particularly described as follows: Beginning at a point having Coordinates of X = 1,585,178.29 and Y = 680,042.44; thence South 88 degrees 59 minutes 52 seconds East 5,224.36 feet to a point having Coordinates of X = 1,590,401.85 and Y = 679,951.07; thence South 8,682.19 feet to a point having a Coordinate of X = 1,590,401.85 and Y = 671,268.88; thence South 00 degrees 20 minutes 58 seconds West 1,872.33 feet to a point having Coordinates of X = 1,590,390.43 and Y = 669,396.58; thence North 89 degrees 16 minutes 41 seconds West 5,226.17 feet to a point having Coordinates of X = 1,585,164.68 and Y = 669,462.44; thence North 00 degrees 04 minutes 25 seconds East 10,580.01 feet to the point of beginning, **LESS AND EXCEPT**, any and all parts of Operating Agreement A0275 that may lie within the above described property, containing approximately **235 acres**, all as more particularly outlined on a plat on file in the Office of Mineral Resources, Department of Natural Resources. All bearings, distances and coordinates are based on Louisiana Coordinate System of 1927, (North or South Zone), where applicable.

NOTE: The above description of the Tract nominated for lease has been provided and corrected, where required, exclusively by the nomination party. Any mineral lease selected from this Tract and awarded by the Louisiana State Mineral and Energy Board shall be without warranty of any kind, either express, implied, or statutory, including, but not limited to, the implied warranties of merchantability and fitness for a particular purpose. Should the mineral lease awarded by the Louisiana State Mineral and Energy Board be subsequently modified, cancelled or abrogated due to the existence of conflicting leases, operating agreements, private claims or other future obligations or conditions which may affect all or any portion of the leased Tract, it shall not relieve the Lessee of the obligation to pay any bonus due thereon to the Louisiana State Mineral and Energy Board, nor shall the Louisiana State Mineral and Energy Board be obligated to refund any consideration paid by the Lessor prior to such modification, cancellation, or abrogation, including, but not limited to, bonuses, rentals and royalties.

NOTE: Lessee agrees not to erect any derrick, tank, warehouse or other equipment or structure on the leased premises nor shall lessee interfere, in any manner, with lessor's use of the property. Lessee shall have, however, the complete right to drill for, produce, extract and recover the minerals in and beneath said land by drilling or other operations conducted from the surface of other lands or by the pooling or unitization of the leased premises with other land, lease or leases in the area.

Applicant: USG PROPERTIES HAYNESVILLE, LLC

Bidder	Cash Payment	Price/Acre	Rental	Oil	Gas	Other

Legend

22090001

Active_Leases

0 2,000 Feet



P.O.B.

CADDO

A0275

CROSS LAKE

T18N-R14W

A0224

TRACT 45571 - Plaquemines Parish, Louisiana

All of the lands now or formerly constituting the beds and bottoms of all water bodies of every nature and description as to which title is vested in the State of Louisiana, together with all islands arising therein and other lands formed by accretion or by reliction, where allowed by law, excepting tax adjudicated lands, and not presently under mineral lease on September 14, 2022, situated in Plaquemines Parish, Louisiana, and more particularly described as follows: Beginning at a point having Coordinates of X = 2,579,567.60 and Y = 253,402.74; thence North approximately 11,499 feet to a point on the Southern boundary of State Lease No. 195, as amended; thence Northeasterly approximately 18,028 feet along the Southern boundary of said State Lease No. 195, as amended, to its Southeast corner; thence South approximately 18,480 feet to a point having Coordinates of X = 2,594,437.68 and Y = 253,033.59; thence North 88 degrees 34 minutes 41 seconds West 14,874.67 feet to the point of beginning, **LESS AND EXCEPT** any portion of State Lease 195, as amended, that may lie within the above described tract, containing approximately **1,852 acres**, all as more particularly outlined on a plat on file in the Office of Mineral Resources, Department of Natural Resources. All bearings, distances and coordinates are based on Louisiana Coordinate System of 1927, (North or South Zone), where applicable.

NOTE: The above description of the Tract nominated for lease has been provided and corrected, where required, exclusively by the nomination party. Any mineral lease selected from this Tract and awarded by the Louisiana State Mineral and Energy Board shall be without warranty of any kind, either express, implied, or statutory, including, but not limited to, the implied warranties of merchantability and fitness for a particular purpose. Should the mineral lease awarded by the Louisiana State Mineral and Energy Board be subsequently modified, cancelled or abrogated due to the existence of conflicting leases, operating agreements, private claims or other future obligations or conditions which may affect all or any portion of the leased Tract, it shall not relieve the Lessee of the obligation to pay any bonus due thereon to the Louisiana State Mineral and Energy Board, nor shall the Louisiana State Mineral and Energy Board be obligated to refund any consideration paid by the Lessor prior to such modification, cancellation, or abrogation, including, but not limited to, bonuses, rentals and royalties.

NOTE: The State of Louisiana does hereby reserve, and this lease shall be subject to, the imprescriptible right of surface use in the nature of a servitude in favor of the Department of Natural Resources, including its Offices and Commissions, for the sole purpose of implementing, constructing, servicing and maintaining approved coastal zone management and/or restoration projects. Utilization of any and all rights derived under this lease by the mineral lessee, its agents, successors or assigns, shall not interfere with nor hinder the reasonable surface use by the Department of Natural Resources, its Offices or Commissions, as herein above reserved.

NOTE: This tract is located in an area designated by the Louisiana Legislature or the Wildlife and Fisheries Commission as a Public Oyster Seed

Ground, Reservation, or area of Calcasieu or Sabine Lake. Proposed projects occurring in these areas will be evaluated on a case by case basis by Louisiana Department of Wildlife & Fisheries. Modifications to proposed project features including, but not limited to, access routes, well sites, flowlines, and appurtenant structures maybe required by the Louisiana Department of Wildlife and Fisheries. In addition, compensatory mitigation will be required to offset unavoidable habitat impacts.

Applicant: BORDER EXPLORATION, L.L.C.

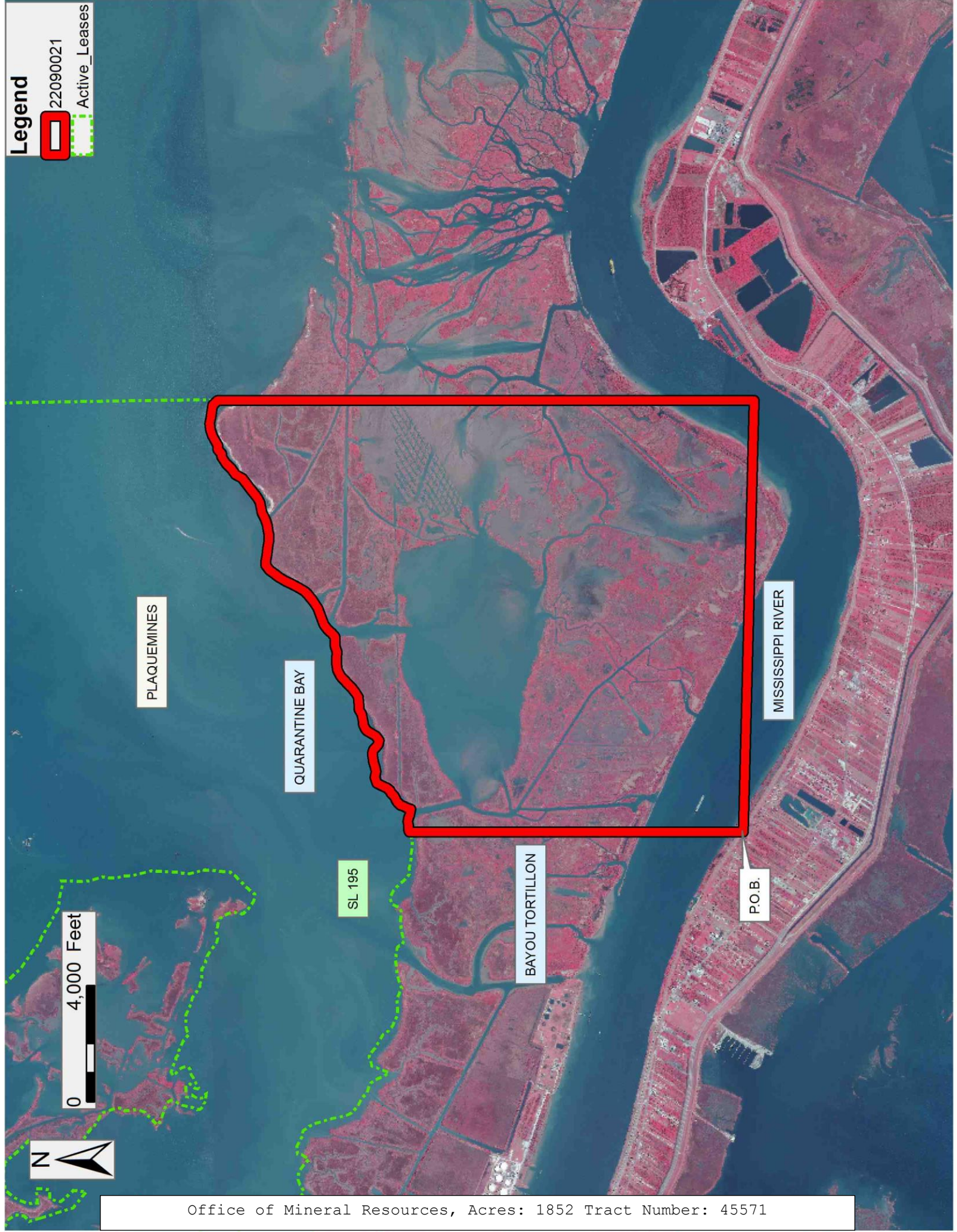
Bidder	Cash Payment	Price/Acre	Rental	Oil	Gas	Other

Legend



22090021

Active_Leases



PLAQUEMINES

QUARANTINE BAY

MISSISSIPPI RIVER

SL 195

BAYOU TORTILLON

P.O.B.

0 4,000 Feet



TRACT 45572 - Plaquemines Parish, Louisiana

All of the lands now or formerly constituting the beds and bottoms of all water bodies of every nature and description as to which title is vested in the State of Louisiana, together with all islands arising therein and other lands formed by accretion or by reliction, where allowed by law, excepting tax adjudicated lands, and not presently under mineral lease on September 14, 2022, situated in Plaquemines Parish, Louisiana, and more particularly described as follows: Beginning at a point having Coordinates of X = 2,579,567.60 and Y = 253,402.74; thence North 69 degrees 55 minutes 42 seconds West 18,480.00 feet to the Southeast corner of State Lease No. 21695 having Coordinates of X = 2,562,210.00 and Y = 259,745.00; thence North 31 degrees 08 minutes 39 seconds East 3,924.81 feet along the East line of said State Lease No. 21695 to its Northeast corner, said corner being the Southeast corner of State Lease No. 21694, having Coordinates of X = 2,564,239.89 and Y = 263,104.12; North 31 degrees 34 minutes 24 seconds East 5,682.43 feet along the East line of said State Lease No. 21694 to its Northeast corner having Coordinates of X = 2,567,215.15 and Y = 267,945.38; thence North 31 degrees 34 minutes 24 seconds East approximately 935 feet to a point on the Southern boundary of State Lease No. 195, as amended; thence Southeasterly approximately 15,494 feet along the Southern boundary of said State Lease No. 195, as amended, to a point; thence South approximately 11,499 feet to the point of beginning, **LESS AND EXCEPT** any portion of State Lease 195, as amended, that may lie within the above described tract, (This lease includes only waterbottoms claimed and owned by the state and specifically excludes any land which the state may claim or own and to which the mineral rights are vested in the state), containing approximately **1,260 acres**, all as more particularly outlined on a plat on file in the Office of Mineral Resources, Department of Natural Resources. All bearings, distances and coordinates are based on Louisiana Coordinate System of 1927, (North or South Zone), where applicable.

NOTE: The above description of the Tract nominated for lease has been provided and corrected, where required, exclusively by the nomination party. Any mineral lease selected from this Tract and awarded by the Louisiana State Mineral and Energy Board shall be without warranty of any kind, either express, implied, or statutory, including, but not limited to, the implied warranties of merchantability and fitness for a particular purpose. Should the mineral lease awarded by the Louisiana State Mineral and Energy Board be subsequently modified, cancelled or abrogated due to the existence of conflicting leases, operating agreements, private claims or other future obligations or conditions which may affect all or any portion of the leased Tract, it shall not relieve the Lessee of the obligation to pay any bonus due thereon to the Louisiana State Mineral and Energy Board, nor shall the Louisiana State Mineral and Energy Board be obligated to refund any consideration paid by the Lessor prior to such modification, cancellation, or abrogation, including, but not limited to, bonuses, rentals and royalties.

NOTE: The State of Louisiana does hereby reserve, and this lease shall be subject to, the imprescriptible right of surface use in the nature of a

servitude in favor of the Department of Natural Resources, including its Offices and Commissions, for the sole purpose of implementing, constructing, servicing and maintaining approved coastal zone management and/or restoration projects. Utilization of any and all rights derived under this lease by the mineral lessee, its agents, successors or assigns, shall not interfere with nor hinder the reasonable surface use by the Department of Natural Resources, its Offices or Commissions, as herein above reserved.

Applicant: BORDER EXPLORATION, L.L.C.

Bidder	Cash Payment	Price/Acre	Rental	Oil	Gas	Other

Legend

22090022

Active_Leases



0 2,500 Feet

Office of Mineral Resources, Acres: 1260 Tract Number: 45572

TRACT 45573 - Lafourche Parish, Louisiana

All of the lands now or formerly constituting the beds and bottoms of all water bodies of every nature and description as to which title is vested in the State of Louisiana, together with all islands arising therein and other lands formed by accretion or by reliction, where allowed by law, excepting tax adjudicated lands, and not presently under mineral lease on September 14, 2022, situated in Lafourche Parish, Louisiana, and more particularly described as follows: Beginning at the Northeast corner of State Lease No. 21782 having Coordinates of X = 2,304,919.15 and Y = 214,619.51; thence East 10,317.54 feet to a point having Coordinates of X = 2,315,236.69 and Y = 214,619.51; thence South 8,452.16 feet to a point having Coordinates of X = 2,315,236.69 and Y = 206,167.35; thence West 12,817.54 feet to a point having Coordinates of X = 2,302,419.15 and Y = 206,167.35; thence North 2,452.17 feet to the Southeast corner of State Lease No. 21782 having Coordinates of X = 2,302,419.15 and Y = 208,619.52; thence North 22 degrees 37 minutes 12 seconds East 6,500.00 feet along the east boundary of said State Lease No. 21782 to the point of beginning, containing approximately **2,314.88 acres**, all as more particularly outlined on a plat on file in the Office of Mineral Resources, Department of Natural Resources. All bearings, distances and coordinates are based on Louisiana Coordinate System of 1927, (North or South Zone), where applicable.

NOTE: The above description of the Tract nominated for lease has been provided and corrected, where required, exclusively by the nomination party. Any mineral lease selected from this Tract and awarded by the Louisiana State Mineral and Energy Board shall be without warranty of any kind, either express, implied, or statutory, including, but not limited to, the implied warranties of merchantability and fitness for a particular purpose. Should the mineral lease awarded by the Louisiana State Mineral and Energy Board be subsequently modified, cancelled or abrogated due to the existence of conflicting leases, operating agreements, private claims or other future obligations or conditions which may affect all or any portion of the leased Tract, it shall not relieve the Lessee of the obligation to pay any bonus due thereon to the Louisiana State Mineral and Energy Board, nor shall the Louisiana State Mineral and Energy Board be obligated to refund any consideration paid by the Lessor prior to such modification, cancellation, or abrogation, including, but not limited to, bonuses, rentals and royalties.

NOTE: The State of Louisiana does hereby reserve, and this lease shall be subject to, the imprescriptible right of surface use in the nature of a servitude in favor of the Department of Natural Resources, including its Offices and Commissions, for the sole purpose of implementing, constructing, servicing and maintaining approved coastal zone management and/or restoration projects. Utilization of any and all rights derived under this lease by the mineral lessee, its agents, successors or assigns, shall not interfere with nor hinder the reasonable surface use by the Department of Natural Resources, its Offices or Commissions, as herein above reserved.

Applicant: CYPRESS ENERGY CORPORATION

Bidder	Cash Payment	Price/Acre	Rental	Oil	Gas	Other

Legend

22090012

Active_Leases



LAFOURCHE

LAKE RACCOURCI

P.O.B.

SL 21782

2,000 Feet

0



Office of Mineral Resources, Acres: 2314.88 Tract Number: 45573

TRACT 45574 - Lafourche Parish, Louisiana

All of the lands now or formerly constituting the beds and bottoms of all water bodies of every nature and description as to which title is vested in the State of Louisiana, together with all islands arising therein and other lands formed by accretion or by reliction, where allowed by law, excepting tax adjudicated lands, and not presently under mineral lease on September 14, 2022, situated in Lafourche Parish, Louisiana, and more particularly described as follows: Beginning at a point having Coordinates of X = 2,315,236.69 and Y = 214,619.51; thence East 12,800.00 feet to a point having Coordinates of X = 2,328,036.69 and Y = 214,619.51; thence South 8,452.16 feet to a point having Coordinates of X = 2,328,036.69 and Y = 206,167.35; thence West 12,800.00 feet to a point having Coordinates of X = 2,315,236.69 and Y = 206,167.35; thence North 8,452.16 feet to the point of beginning, containing approximately **2,483.65 acres**, all as more particularly outlined on a plat on file in the Office of Mineral Resources, Department of Natural Resources. All bearings, distances and coordinates are based on Louisiana Coordinate System of 1927, (North or South Zone), where applicable.

NOTE: The above description of the Tract nominated for lease has been provided and corrected, where required, exclusively by the nomination party. Any mineral lease selected from this Tract and awarded by the Louisiana State Mineral and Energy Board shall be without warranty of any kind, either express, implied, or statutory, including, but not limited to, the implied warranties of merchantability and fitness for a particular purpose. Should the mineral lease awarded by the Louisiana State Mineral and Energy Board be subsequently modified, cancelled or abrogated due to the existence of conflicting leases, operating agreements, private claims or other future obligations or conditions which may affect all or any portion of the leased Tract, it shall not relieve the Lessee of the obligation to pay any bonus due thereon to the Louisiana State Mineral and Energy Board, nor shall the Louisiana State Mineral and Energy Board be obligated to refund any consideration paid by the Lessor prior to such modification, cancellation, or abrogation, including, but not limited to, bonuses, rentals and royalties.

NOTE: The State of Louisiana does hereby reserve, and this lease shall be subject to, the imprescriptible right of surface use in the nature of a servitude in favor of the Department of Natural Resources, including its Offices and Commissions, for the sole purpose of implementing, constructing, servicing and maintaining approved coastal zone management and/or restoration projects. Utilization of any and all rights derived under this lease by the mineral lessee, its agents, successors or assigns, shall not interfere with nor hinder the reasonable surface use by the Department of Natural Resources, its Offices or Commissions, as herein above reserved.

Applicant: CYPRESS ENERGY CORPORATION

Bidder	Cash Payment	Price/Acre	Rental	Oil	Gas	Other

Legend



22090013

LAFOURCHE

0 2,000 Feet

0



P.O.B.

LAKE RACCOURCI

Office of Mineral Resources, Acres: 2483.65 Tract Number: 45574

TRACT 45575 - Lafourche and Terrebonne Parishes, Louisiana

All of the lands now or formerly constituting the beds and bottoms of all water bodies of every nature and description as to which title is vested in the State of Louisiana, together with all islands arising therein and other lands formed by accretion or by reliction, where allowed by law, excepting tax adjudicated lands, and not presently under mineral lease on September 14, 2022, situated in Lafourche and Terrebonne Parishes, Louisiana, and more particularly described as follows: Beginning at a point having Coordinates of X = 2,287,554.04 and Y = 214,619.51; thence East 11,365.11 feet to the Northwest corner of State Lease No. 21782 having Coordinates of X = 2,298,919.15 and Y = 214,619.51; thence South 4,397.86 feet along the west boundary of said State Lease No. 21782 to the Northwest corner of State Lease No. 21620 having Coordinates of X = 2,298,919.15 and Y = 210,221.65; thence continue South 817.70 feet along the west boundary of said State Lease No. 21620 to its Southwest corner and a point on the west boundary of said State Lease No. 21782 having Coordinates of X = 2,298,919.15 and Y = 209,403.96; thence along the boundaries of said State Lease No. 21782 the following courses: South 784.44 feet to a point having Coordinates of X = 2,298,919.15 and Y = 208,619.52 and East 3,500.00 feet to its Southeast corner having Coordinates of X = 2,302,419.15 and Y = 208,619.52; thence South 2,452.17 feet to a point having Coordinates of X = 2,302,419.15 and Y = 206,167.35; thence West 14,865.12 feet to a point having Coordinates of X = 2,287,554.04 and Y = 206,167.35; thence North 8,452.16 feet to the point of beginning, **LESS AND EXCEPT** any right, title, and interest in lands owned by and not under lease from the State of Louisiana, on behalf of the Lafourche Parish and Terrebonne Parish School Boards, situated in Section 16, Township 12 South, Range 20 East, Lafourche Parish and Terrebonne Parish, Louisiana, contained within the above described tract, containing approximately **2,407 acres**, all as more particularly outlined on a plat on file in the Office of Mineral Resources, Department of Natural Resources. All bearings, distances and coordinates are based on Louisiana Coordinate System of 1927, (North or South Zone), where applicable.

NOTE: The above description of the Tract nominated for lease has been provided and corrected, where required, exclusively by the nomination party. Any mineral lease selected from this Tract and awarded by the Louisiana State Mineral and Energy Board shall be without warranty of any kind, either express, implied, or statutory, including, but not limited to, the implied warranties of merchantability and fitness for a particular purpose. Should the mineral lease awarded by the Louisiana State Mineral and Energy Board be subsequently modified, cancelled or abrogated due to the existence of conflicting leases, operating agreements, private claims or other future obligations or conditions which may affect all or any portion of the leased Tract, it shall not relieve the Lessee of the obligation to pay any bonus due thereon to the Louisiana State Mineral and Energy Board, nor shall the Louisiana State Mineral and Energy Board be obligated to refund any consideration paid by the Lessor prior to such modification, cancellation, or abrogation, including, but not limited to, bonuses, rentals and royalties.

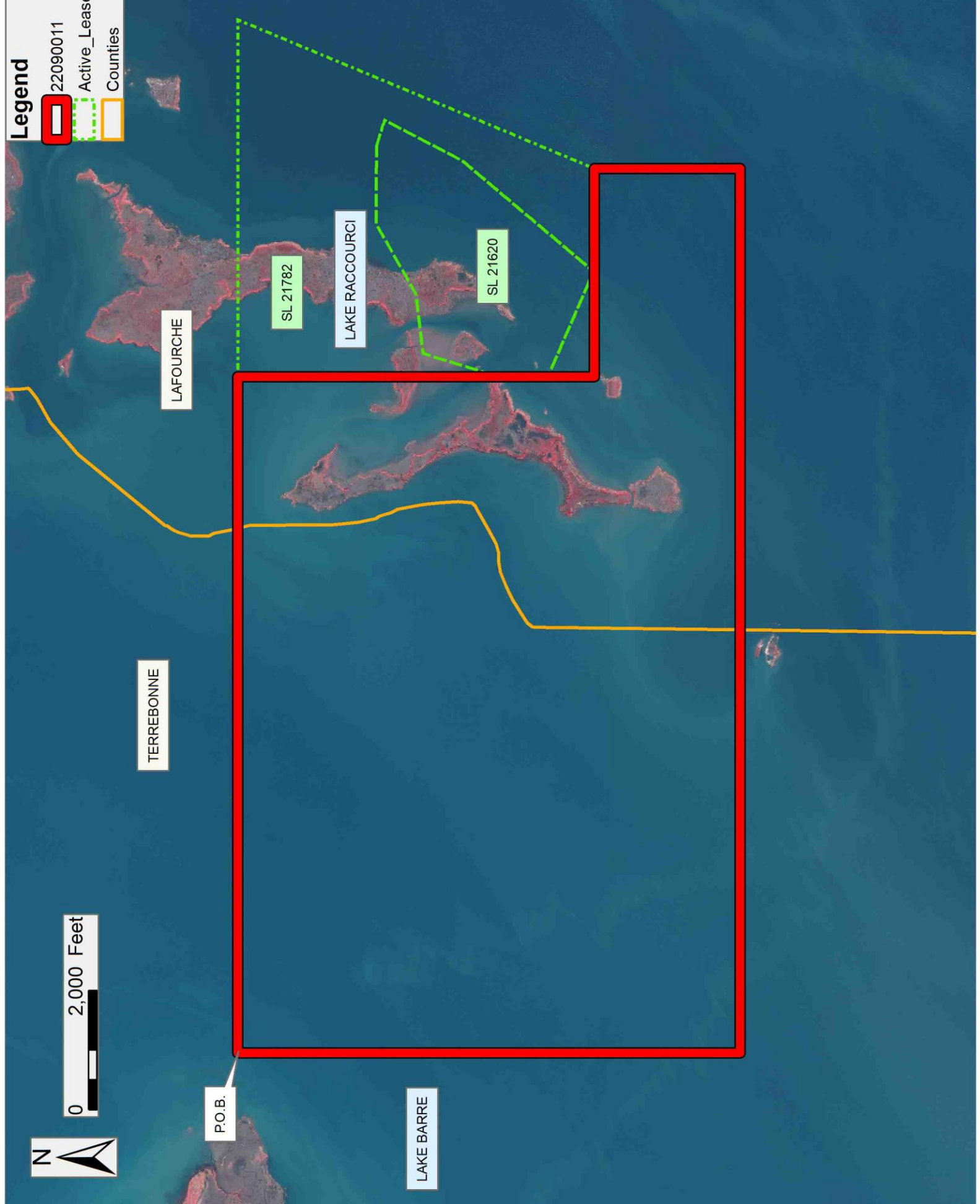
NOTE: The State of Louisiana does hereby reserve, and this lease shall be subject to, the imprescriptible right of surface use in the nature of a servitude in favor of the Department of Natural Resources, including its Offices and Commissions, for the sole purpose of implementing, constructing, servicing and maintaining approved coastal zone management and/or restoration projects. Utilization of any and all rights derived under this lease by the mineral lessee, its agents, successors or assigns, shall not interfere with nor hinder the reasonable surface use by the Department of Natural Resources, its Offices or Commissions, as herein above reserved.

Applicant: CYPRESS ENERGY CORPORATION

Bidder	Cash Payment	Price/Acre	Rental	Oil	Gas	Other

Legend

- 22090011
- Active_Leases
- Counties



Office of Mineral Resources, Acres: 2407 Tract Number: 45575

TRACT 45576 - Lafourche Parish, Louisiana

All of the lands now or formerly constituting the beds and bottoms of all water bodies of every nature and description as to which title is vested in the State of Louisiana, together with all islands arising therein and other lands formed by accretion or by reliction, where allowed by law, excepting tax adjudicated lands, and not presently under mineral lease on September 14, 2022, situated in Lafourche Parish, Louisiana, and more particularly described as follows: Beginning at a point having Coordinates of X = 2,300,354.04 and Y = 206,167.35; thence East 11,737.06 feet to a point having Coordinates of X = 2,312,091.10 and Y = 206,167.35; thence South 9,932.13 feet to a point having Coordinates of X = 2,312,091.10 and Y = 196,235.21; thence North 89 degrees 56 minutes 44 seconds West 1,333.95 feet to the most eastern Southeast corner of State Lease No. 1480, Tract 2, as amended, having Coordinates of X = 2,310,757.15 and Y = 196,236.48; thence along the boundaries of said State Lease No. 1480 the following courses: North 31 degrees 20 minutes 43 seconds West 2,037.70 feet to a point having Coordinates of X = 2,309,697.15 and Y = 197,976.77, South 84 degrees 46 minutes 18 seconds West 2,024.53 feet to a point having Coordinates of X = 2,307,681.04 and Y = 197,972.28, South 81 degrees 46 minutes 25 seconds West 1,105.08 feet to a point having Coordinates of X = 2,306,587.33 and Y = 197,634.16, South 77 degrees 05 minutes 33 seconds West 648.90 feet to a point having Coordinates of X = 2,305,954.83 and Y = 197,489.21, South 68 degrees 11 minutes 55 seconds West 851.53 feet to a point having Coordinates of X = 2,305,164.20 and Y = 197,172.96, South 64 degrees 51 minutes 17 seconds West 713.27 feet to a point having Coordinates of X = 2,304,518.52 and Y = 196,869.88 and South 63 degrees 06 minutes 14 seconds West 901.62 feet to its Northwest corner and the Northeast corner of State Lease No. 21988, as amended, having Coordinates of X = 2,303,714.43 and Y = 196,462.01; thence along the boundaries of said State Lease No. 21988 the following courses: South 63 degrees 06 minutes 14 seconds West 117.89 feet to a point having Coordinates of X = 2,303,609.29 and Y = 196,408.68 and South 66 degrees 06 minutes 17 seconds West 832.91 feet to its Northwest corner and a point on the East boundary of State Lease No. 3599, as amended, having Coordinates of X = 2,302,847.77 and Y = 196,071.30; thence along the boundaries of said State Lease No. 3599 the following courses: North 00 degrees 29 minutes 48 seconds West 266.20 feet to a point having Coordinates of X = 2,302,845.46 and Y = 196,337.49 and South 89 degrees 30 minutes 18 seconds West 2,491.52 feet to a point having Coordinates of X = 2,300,354.04 and Y = 196,315.97; thence North 9,851.38 feet to the point of beginning, containing approximately **2,476.95 acres**, all as more particularly outlined on a plat on file in the Office of Mineral Resources, Department of Natural Resources. All bearings, distances and coordinates are based on Louisiana Coordinate System of 1927, (North or South Zone), where applicable.

NOTE: The above description of the Tract nominated for lease has been provided and corrected, where required, exclusively by the nomination party. Any mineral lease selected from this Tract and awarded by the Louisiana State Mineral and Energy Board shall be without warranty of any kind, either express, implied, or statutory, including, but not limited to, the implied

warranties of merchantability and fitness for a particular purpose. Should the mineral lease awarded by the Louisiana State Mineral and Energy Board be subsequently modified, cancelled or abrogated due to the existence of conflicting leases, operating agreements, private claims or other future obligations or conditions which may affect all or any portion of the leased Tract, it shall not relieve the Lessee of the obligation to pay any bonus due thereon to the Louisiana State Mineral and Energy Board, nor shall the Louisiana State Mineral and Energy Board be obligated to refund any consideration paid by the Lessor prior to such modification, cancellation, or abrogation, including, but not limited to, bonuses, rentals and royalties.

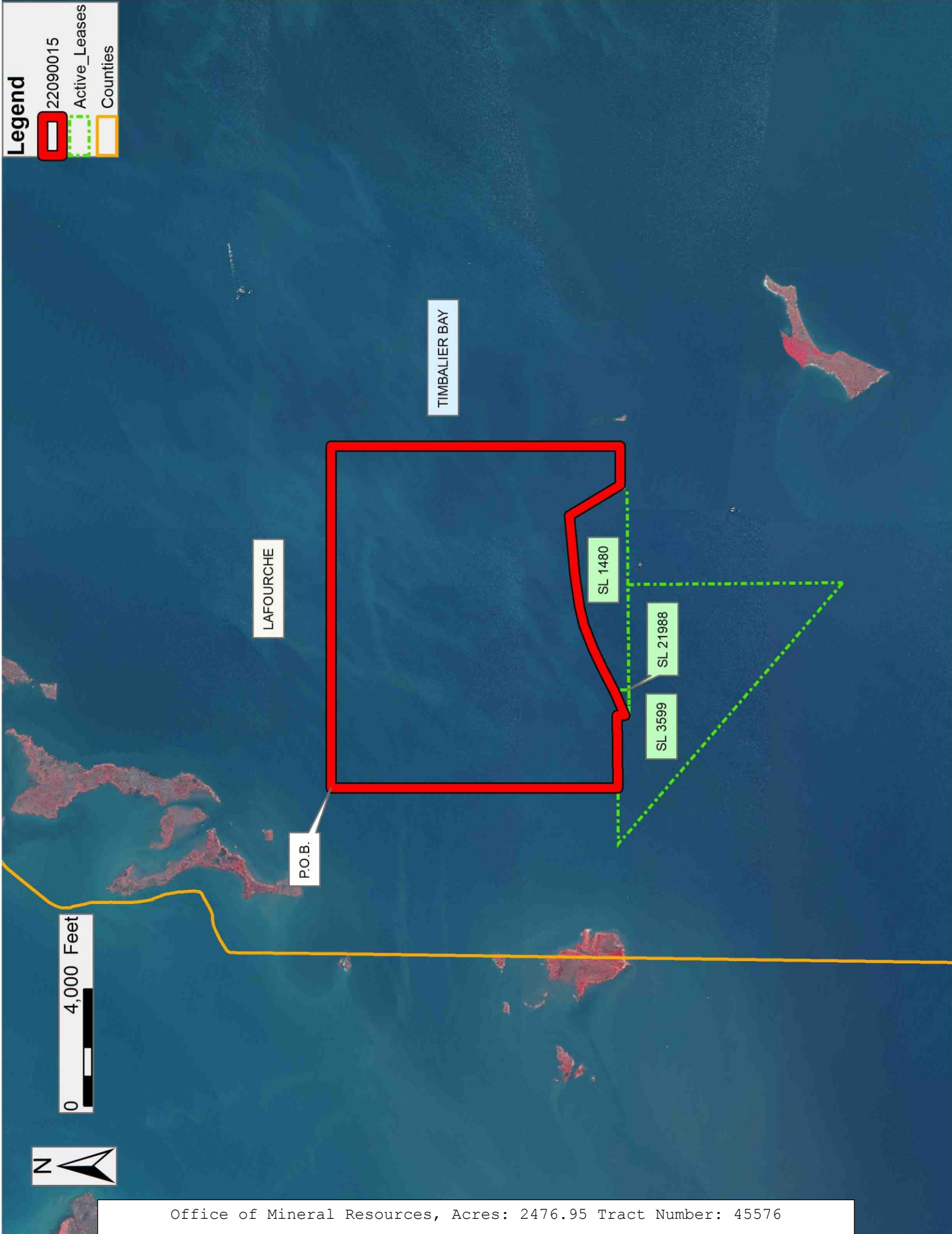
NOTE: The State of Louisiana does hereby reserve, and this lease shall be subject to, the imprescriptible right of surface use in the nature of a servitude in favor of the Department of Natural Resources, including its Offices and Commissions, for the sole purpose of implementing, constructing, servicing and maintaining approved coastal zone management and/or restoration projects. Utilization of any and all rights derived under this lease by the mineral lessee, its agents, successors or assigns, shall not interfere with nor hinder the reasonable surface use by the Department of Natural Resources, its Offices or Commissions, as herein above reserved.

Applicant: CYPRESS ENERGY CORPORATION

Bidder	Cash Payment	Price/Acre	Rental	Oil	Gas	Other

Legend

- 22090015
- Active_Leases
- Counties



Office of Mineral Resources, Acres: 2476.95 Tract Number: 45576

TRACT 45577 - Lafourche Parish, Louisiana

All of the lands now or formerly constituting the beds and bottoms of all water bodies of every nature and description as to which title is vested in the State of Louisiana, together with all islands arising therein and other lands formed by accretion or by reliction, where allowed by law, excepting tax adjudicated lands, and not presently under mineral lease on September 14, 2022, situated in Lafourche Parish, Louisiana, and more particularly described as follows: Beginning at a point having Coordinates of X = 2,312,091.10 and Y = 206,167.35; thence East 9,882.40 feet to a point having Coordinates of X = 2,321,973.49 and Y = 206,167.35; thence South 13,628.40 feet to a point having Coordinates of X = 2,321,973.49 and Y = 192,538.95; thence West 7,946.37 feet to a point on the West boundary of the Eastern portion of State Lease No. 3258, as amended having Coordinates of X = 2,314,027.13 and Y = 192,538.95; thence along the boundaries of said State Lease No. 3258 the following courses: North 57 degrees 00 minutes 41 seconds West 534.71 feet, North 58 degrees 14 minutes 26 seconds East 493.84 feet, North 49 degrees 23 minutes 55 seconds East 368.80 feet, North 46 degrees 04 minutes 51 seconds East 374.80 feet, North 37 degrees 18 minutes 14 seconds East 264.00 feet, North 31 degrees 49 minutes 39 seconds East 341.30 feet, North 24 degrees 37 minutes 24 second East 264.00 feet, North 20 degrees 22 minutes 35 seconds east 373.40 feet, North 15 degrees 06 minutes 34 seconds East 580.77 feet, North 54 degrees 21 minutes 40 seconds West 530.82 feet, North 08 degrees 36 minutes 56 seconds East 492.38 feet, South 89 degrees 30 minutes 18 seconds West 1,692.73 feet and South 43 degrees 31 minutes 57 seconds West 1,655.42 feet to a point having Coordinates of X = 2,312,091.10 and Y = 194,822.26; thence North 11,345.09 feet to the point of beginning, **LESS AND EXCEPT** IN ITS ENTIRETY STATE LEASE NO. 1480, TRACT 1, AS AMENDED, AS FOLLOWS: Commencing at a point being the point of beginning of the above described nominated tract having Coordinates of X = 2,312,091.10 and Y = 206,167.35; thence South 76 degrees 41 minutes 27 seconds East 5,838.43 feet to the Point of Beginning of said State Lease No. 1480 having Coordinates of X = 2,317,772.72 and Y = 204,823.31; thence South 00 degrees 29 minutes 42 seconds East a distance of 6,679.60 feet to a point having Coordinates of X = 2,317,830.42 and Y = 198,143.96; thence West a distance of 2,287.55 feet to a point having Coordinates of X = 2,315,542.87 and Y = 198,143.96; thence North a distance of 1,172.45 feet to a point having Coordinates of X = 2,315,542.87 and Y = 199,316.41; thence South 63 degrees 17 minutes 36 seconds West a distance of 2,167.68 feet to a point having Coordinates of X = 2,313,606.44 and Y = 198,342.20; thence North 00 degrees 29 minutes 42 seconds West a distance of 2,283.26 feet to a point having Coordinates of X = 2,313,586.71 and Y = 200,625.37; thence North 03 degrees 41 minutes 22 seconds West a distance of 454.47 feet to a point having Coordinates of X = 2,313,557.47 and Y = 201,078.90; thence North 61 degrees 00 minutes 04 seconds East a distance of 152.33 feet to a point having Coordinates of X = 2,313,690.70 and Y = 201,152.75; thence North 60 degrees 12 minutes 18 seconds East a distance of 289.10 feet to a point having Coordinates of X = 2,313,941.59 and Y = 201,296.41; thence North 58 degrees 02 minutes 09 seconds East a distance of 516.60 feet to a point having Coordinates of X = 2,314,379.86 and Y = 201,569.89; thence North 57 degrees

07 minutes 26 seconds East a distance of 976.40 feet to a point having Coordinates of X = 2,315,199.88 and Y = 202,099.90; thence North 52 degrees 47 minutes 01 seconds East a distance of 992.00 feet to a point having Coordinates of X = 2,315,989.87 and Y = 202,699.89; thence North 48 degrees 21 minutes 59 seconds East a distance of 722.50 feet to a point having Coordinates of X = 2,316,529.87 and Y = 203,179.89; thence North 43 degrees 13 minutes 43 seconds East a distance of 686.20 feet to a point having Coordinates of X = 2,316,999.86 and Y = 203,679.88; thence North 41 degrees 59 minutes 14 seconds East a distance of 403.60 feet to a point having Coordinates of X = 2,317,269.85 and Y = 203,979.87; thence North 33 degrees 23 minutes 19 seconds East a distance of 527.00 feet to a point having Coordinates of X = 2,317,559.87 and Y = 204,419.89; thence North 27 degrees 48 minutes 59 seconds East a distance of 456.13 feet to the point of beginning, and **LESS AND EXCEPT** any right, title, and interest in lands owned by and not under lease from the State of Louisiana, on behalf of the Lafourche Parish School Board, situated in Section 16, Township 22 South, Range 21 East, Lafourche Parish, Louisiana, contained within the above described tract. The above described tract contains approximately **2,491 acres**, all as more particularly outlined on a plat on file in the Office of Mineral Resources, Department of Natural Resources. All bearings, distances and coordinates are based on Louisiana Coordinate System of 1927, (North or South Zone), where applicable.

NOTE: The above description of the Tract nominated for lease has been provided and corrected, where required, exclusively by the nomination party. Any mineral lease selected from this Tract and awarded by the Louisiana State Mineral and Energy Board shall be without warranty of any kind, either express, implied, or statutory, including, but not limited to, the implied warranties of merchantability and fitness for a particular purpose. Should the mineral lease awarded by the Louisiana State Mineral and Energy Board be subsequently modified, cancelled or abrogated due to the existence of conflicting leases, operating agreements, private claims or other future obligations or conditions which may affect all or any portion of the leased Tract, it shall not relieve the Lessee of the obligation to pay any bonus due thereon to the Louisiana State Mineral and Energy Board, nor shall the Louisiana State Mineral and Energy Board be obligated to refund any consideration paid by the Lessor prior to such modification, cancellation, or abrogation, including, but not limited to, bonuses, rentals and royalties.

NOTE: The State of Louisiana does hereby reserve, and this lease shall be subject to, the imprescriptible right of surface use in the nature of a servitude in favor of the Department of Natural Resources, including its Offices and Commissions, for the sole purpose of implementing, constructing, servicing and maintaining approved coastal zone management and/or restoration projects. Utilization of any and all rights derived under this lease by the mineral lessee, its agents, successors or assigns, shall not interfere with nor hinder the reasonable surface use by the Department of Natural Resources, its Offices or Commissions, as herein above reserved.

Applicant: CYPRESS ENERGY CORPORATION

Bidder	Cash Payment	Price/Acre	Rental	Oil	Gas	Other

Legend



22090016

Active_Leases



0 4,000 Feet

LAFOURCHE

TIMBALIER BAY

P.O.B.

SL 1480

SL 3258

SL 3258

TRACT 45578 - Lafourche Parish, Louisiana

All of the lands now or formerly constituting the beds and bottoms of all water bodies of every nature and description as to which title is vested in the State of Louisiana, together with all islands arising therein and other lands formed by accretion or by reliction, where allowed by law, excepting tax adjudicated lands, and not presently under mineral lease on September 14, 2022, situated in Lafourche Parish, Louisiana, and more particularly described as follows: Beginning at a point having Coordinates of X = 2,321,973.49 and Y = 206,167.35; thence East 6,063.20 feet to a point having Coordinates of X = 2,328,036.69 and Y = 206,167.35; thence South 13,628.40 feet to a point having Coordinates of X = 2,328,036.69 and Y = 192,538.95; thence West 6,063.20 feet to a point having Coordinates of X = 2,321,973.49 and Y = 192,538.95; thence North 13,628.40 feet to the point of beginning, containing approximately **1,896.96 acres**, all as more particularly outlined on a plat on file in the Office of Mineral Resources, Department of Natural Resources. All bearings, distances and coordinates are based on Louisiana Coordinate System of 1927, (North or South Zone), where applicable.

NOTE: The above description of the Tract nominated for lease has been provided and corrected, where required, exclusively by the nomination party. Any mineral lease selected from this Tract and awarded by the Louisiana State Mineral and Energy Board shall be without warranty of any kind, either express, implied, or statutory, including, but not limited to, the implied warranties of merchantability and fitness for a particular purpose. Should the mineral lease awarded by the Louisiana State Mineral and Energy Board be subsequently modified, cancelled or abrogated due to the existence of conflicting leases, operating agreements, private claims or other future obligations or conditions which may affect all or any portion of the leased Tract, it shall not relieve the Lessee of the obligation to pay any bonus due thereon to the Louisiana State Mineral and Energy Board, nor shall the Louisiana State Mineral and Energy Board be obligated to refund any consideration paid by the Lessor prior to such modification, cancellation, or abrogation, including, but not limited to, bonuses, rentals and royalties.

NOTE: The State of Louisiana does hereby reserve, and this lease shall be subject to, the imprescriptible right of surface use in the nature of a servitude in favor of the Department of Natural Resources, including its Offices and Commissions, for the sole purpose of implementing, constructing, servicing and maintaining approved coastal zone management and/or restoration projects. Utilization of any and all rights derived under this lease by the mineral lessee, its agents, successors or assigns, shall not interfere with nor hinder the reasonable surface use by the Department of Natural Resources, its Offices or Commissions, as herein above reserved.

Applicant: CYPRESS ENERGY CORPORATION

Bidder	Cash Payment	Price/Acre	Rental	Oil	Gas	Other

Legend



22090017

0 3,000 Feet



LAFOURCHE

P.O.B.

TIMBALIER BAY



TRACT 45579 - Lafourche and Terrebonne Parishes, Louisiana

All of the lands now or formerly constituting the beds and bottoms of all water bodies of every nature and description as to which title is vested in the State of Louisiana, together with all islands arising therein and other lands formed by accretion or by reliction, where allowed by law, excepting tax adjudicated lands, and not presently under mineral lease on September 14, 2022, situated in Lafourche and Terrebonne Parishes, Louisiana, and more particularly described as follows: Beginning at a point having Coordinates of X = 2,287,554.04 and Y = 206,167.35; thence East 12,800.00 feet to a point having Coordinates of X = 2,300,354.04 and Y = 206,167.35; thence South 8,452.16 feet to a point having Coordinates of X = 2,300,354.04 and Y = 197,715.18; thence West 12,800.00 feet to a point having Coordinates of X = 2,287,554.04 and Y = 197,715.18; thence North 8,452.16 feet to the point of beginning, **LESS AND EXCEPT** IN THEIR ENTIRETY STATE LEASE NO. 20893, STATE LEASE NO. 20892 AND STATE LEASE NO. 20894 AS FOLLOWS: Commencing at a point being the point of beginning of the above described nominated tract having Coordinates of X = 2,287,554.04 and Y = 206,167.35; thence South 71 degrees 24 minutes 19 seconds East 6,917.45 feet to the Point of Beginning of said State Leases having Coordinates of X = 2,294,110.38 and Y = 203,961.57, being the Northwest corner of said State Lease No. 20893, as amended; thence along the boundaries of said State Leases the following courses: East 166.88 feet along the north boundary of said State Lease No. 20893 to its Northeast corner and the Northwest corner of said State Lease No. 20892, as amended having Coordinates of X = 2,294,277.26 and Y = 203,961.57; thence East 3,191.03 feet to a point having Coordinates of X = 2,297,468.29 and Y = 203,961.57, South 40 degrees 14 minutes 41 seconds East 1,600.00 feet to a point having Coordinates of X = 2,298,501.97 and Y = 202,740.30 and South 71 degrees 27 minutes 47 seconds West 4,532.48 feet to its Southwest corner and the Northeast corner of said State Lease No. 20894, as amended having Coordinates of X = 2,294,204.62 and Y = 201,299.35; thence South 71 degrees 27 minutes 47 seconds West 1,243.44 feet to a point having Coordinates of X = 2,293,025.69 and Y = 200,904.03 and North 40 degrees 49 minutes 57 seconds West 517.59 feet to its Northwest corner and the Southwest corner of said State Lease No. 20893 having Coordinates of X = 2,292,687.27 and Y = 201,295.65; thence North 40 degrees 49 minutes 57 seconds West 1,022.26 feet to a point having Coordinates of X = 2,292,018.86 and Y = 202,069.12 and North 47 degrees 51 minutes 38 seconds East 2,820.60 feet to the Point of Beginning. (This lease includes only waterbottoms claimed and owned by the state and specifically excludes any land which the state may claim or own and to which the mineral rights are vested in the state.) The above described tract contains approximately **2,178 acres**, all as more particularly outlined on a plat on file in the Office of Mineral Resources, Department of Natural Resources. All bearings, distances and coordinates are based on Louisiana Coordinate System of 1927, (North or South Zone), where applicable.

NOTE: The above description of the Tract nominated for lease has been provided and corrected, where required, exclusively by the nomination party. Any mineral lease selected from this Tract and awarded by the Louisiana State Mineral and Energy Board shall be without warranty of any kind, either express, implied, or statutory, including, but not limited to, the implied warranties of merchantability and fitness for a particular purpose. Should the mineral lease awarded by the Louisiana State Mineral and Energy Board be subsequently modified, cancelled or abrogated due to the existence of conflicting leases, operating agreements, private claims or other future obligations or conditions which may affect all or any portion of the leased Tract, it shall not relieve the Lessee of the obligation to pay any bonus due thereon to the Louisiana State Mineral and Energy Board, nor shall the Louisiana State Mineral and Energy Board be obligated to refund any consideration paid by the Lessor prior to such modification, cancellation, or abrogation, including, but not limited to, bonuses, rentals and royalties.

NOTE: The State of Louisiana does hereby reserve, and this lease shall be subject to, the imprescriptible right of surface use in the nature of a servitude in favor of the Department of Natural Resources, including its Offices and Commissions, for the sole purpose of implementing, constructing, servicing and maintaining approved coastal zone management and/or restoration projects. Utilization of any and all rights derived under this lease by the mineral lessee, its agents, successors or assigns, shall not interfere with nor hinder the reasonable surface use by the Department of Natural Resources, its Offices or Commissions, as herein above reserved.

Applicant: CYPRESS ENERGY CORPORATION

Bidder	Cash Payment	Price/Acre	Rental	Oil	Gas	Other

Legend

- 22090014
- Active_Leases
- Countries



0 3,000 Feet

