

TRACT 45580 - Portion of Block 113, South Timbalier Area, Revised, Terrebonne Parish, Louisiana

All of the lands now or formerly constituting the beds and bottoms of all water bodies of every nature and description as to which title is vested in the State of Louisiana, together with all islands arising therein and other lands formed by accretion or by reliction, where allowed by law, excepting tax adjudicated lands, and not presently under mineral lease on September 14, 2022, situated in Terrebonne Parish, Louisiana, and more particularly described as follows: Beginning at the Northeast corner of State Lease No. 199, as amended having Coordinates of X = 2,220,293.04 and Y = 198,722.27; thence East 9,939.84 feet to a point having Coordinates of X = 2,230,232.88 and Y = 198,722.27; thence South 9,646.69 feet to a point having Coordinates of X = 2,230,232.88 and Y = 189,075.58; thence North 89 degrees 55 minutes 44 seconds West 4,603.43 feet to a point on the east boundary of said State Lease No. 199, having Coordinates of X = 2,225,629.46 and Y = 189,081.28; along the boundaries of said State Lease No. 199 the following courses: South 89 degrees 39 minutes 55 seconds West 5,280.00 feet to a point having Coordinates of X = 2,220,349.55 and Y = 189,050.43 and North 00 degrees 20 minutes 05 seconds West 9,672.00 feet to the point of beginning, containing approximately **2,157 acres**, all as more particularly outlined on a plat on file in the Office of Mineral Resources, Department of Natural Resources. All bearings, distances and coordinates are based on Louisiana Coordinate System of 1927, (North or South Zone), where applicable.

NOTE: The above description of the Tract nominated for lease has been provided and corrected, where required, exclusively by the nomination party. Any mineral lease selected from this Tract and awarded by the Louisiana State Mineral and Energy Board shall be without warranty of any kind, either express, implied, or statutory, including, but not limited to, the implied warranties of merchantability and fitness for a particular purpose. Should the mineral lease awarded by the Louisiana State Mineral and Energy Board be subsequently modified, cancelled or abrogated due to the existence of conflicting leases, operating agreements, private claims or other future obligations or conditions which may affect all or any portion of the leased Tract, it shall not relieve the Lessee of the obligation to pay any bonus due thereon to the Louisiana State Mineral and Energy Board, nor shall the Louisiana State Mineral and Energy Board be obligated to refund any consideration paid by the Lessor prior to such modification, cancellation, or abrogation, including, but not limited to, bonuses, rentals and royalties.

NOTE: The State of Louisiana does hereby reserve, and this lease shall be subject to, the imprescriptible right of surface use in the nature of a servitude in favor of the Department of Natural Resources, including its Offices and Commissions, for the sole purpose of implementing, constructing, servicing and maintaining approved coastal zone management and/or restoration projects. Utilization of any and all rights derived under this lease by the mineral lessee, its agents, successors or assigns, shall not interfere with nor hinder the reasonable surface use by the Department of Natural Resources, its Offices or Commissions, as herein above reserved.

NOTE: It appears, according to our records, that a portion of this Tract is located within the restrictive safety fairway area as set out by the Corps of Engineers, U.S. Army and/or the restrictive anchorage area as set out by the U.S. Coast Guard.

Applicant: CYPRESS ENERGY CORPORATION

Bidder	Cash Payment	Price/Acre	Rental	Oil	Gas	Other

Legend

- 22090008
- Blocks
- Active_Leases
- Countries



0 2,000 Feet

P.O.B.

BAY CHALAND

TERREBONNE

BAY WELSH

SL 199

BAY SAINTE ELAINE

ST0113

SOUTH TIMBALIER AREA, REVISED

TRACT 45581 - Lafourche and Terrebonne Parishes, Louisiana

All of the lands now or formerly constituting the beds and bottoms of all water bodies of every nature and description as to which title is vested in the State of Louisiana, together with all islands arising therein and other lands formed by accretion or by reliction, where allowed by law, excepting tax adjudicated lands, and not presently under mineral lease on September 14, 2022, situated in Lafourche and Terrebonne Parishes, Louisiana, and more particularly described as follows: Beginning at a point having Coordinates of X = 2,287,554.04 and Y = 197,715.18; thence East 12,800.00 feet to a point having Coordinates of X = 2,300,354.04 and Y = 197,715.18; thence South 1,399.21 feet to a point on the north boundary of State Lease No. 3599, as amended, having Coordinates of X = 2,300,354.04 and Y = 196,315.97; thence along the boundaries of said State Lease No. 3599 the following courses: South 89 degrees 30 minutes 18 seconds West 1,924.49 feet to a point having Coordinates of X = 2,298,429.62 and Y = 196,299.34 and South 49 degrees 19 minutes 18 seconds East 3,073.75 feet to the Northwest corner of State Lease No. 21989 having Coordinates of X = 2,300,760.69 and Y = 194,295.83; thence along the boundaries of said State Lease No. 21989 the following courses: South 00 degrees 39 minutes 16 seconds West 41.90 feet to a point having Coordinates of X = 2,300,760.22 and Y = 194,253.94 and South 16 degrees 06 minutes 33 seconds East 281.79 feet to a point on the north boundary of State Lease No. 22015 having Coordinates of X = 2,300,838.40 and Y = 193,983.21; thence along the boundaries of said State Lease No. 22015 the following: North 62 degrees 50 minutes 00 seconds West 308.08 feet to a point having Coordinates of X = 2,300,564.31 and Y = 194,123.88, North 67 degrees 00 minutes 00 seconds West 400.00 feet to a point having Coordinates of X = 2,300,196.11 and Y = 194,280.17, North 69 degrees 55 minutes 00 seconds West 300.00 feet to a point having Coordinates of X = 2,299,914.35 and Y = 194,383.18, North 74 degrees 14 minutes 00 seconds West 300.00 feet to a point having Coordinates of X = 2,299,625.64 and Y = 194,464.70, North 77 degrees 00 minutes 00 seconds West 300.00 feet to a point having Coordinates of X = 2,299,333.33 and Y = 194,532.19, North 80 degrees 43 minutes 00 seconds West 300.00 feet to a point having Coordinates of X = 2,299,037.26 and Y = 194,580.58, North 82 degrees 49 minutes 00 seconds West 300.00 feet to a point having Coordinates of X = 2,298,739.61 and Y = 194,618.09, North 84 degrees 44 minutes 30 seconds West 296.96 feet to a point having Coordinates of X = 2,298,443.90 and Y = 194,645.31, Southwesterly approximately 593 feet to a point having Coordinates of X = 2,297,851.22 and Y = 194,631.19, North 87 degrees 00 minutes 00 seconds West 500.00 feet to a point having Coordinates of X = 2,297,351.91 and Y = 194,657.36, North 83 degrees 40 minutes 00 seconds West 700.00 feet to a point having Coordinates of X = 2,296,656.18 and Y = 194,734.58, North 79 degrees 33 minutes 00 seconds West 600.00 feet to a point having Coordinates of X = 2,296,066.13 and Y = 194,843.41, North 75 degrees 00 minutes 00 seconds West 500.00 feet to a point having Coordinates of X = 2,295,583.17 and Y = 194,972.82, North 72 degrees 02 minutes 55 seconds West 582.81 feet to a point having Coordinates of X = 2,295,028.73 and Y = 195,152.44, North 66 degrees 57 minutes 04 seconds West 457.12 feet to a point having Coordinates of X = 2,294,608.10 and Y = 195,331.41, North 66 degrees 12 minutes 00 seconds West

460.00 feet to a point having Coordinates of X = 2,294,187.22 and Y = 195,517.04, North 63 degrees 05 minutes 09 seconds West 733.50 feet to a point having Coordinates of X = 2,293,533.17 and Y = 195,849.07, North 60 degrees 40 minutes 00 seconds West 800.00 feet to a point having Coordinates of X = 2,292,835.74 and Y = 196,240.98, North 58 degrees 46 minutes 02 seconds West 975.30 feet to a point having Coordinates of X = 2,292,001.80 and Y = 196,746.69, South 00 degrees 26 minutes 40 seconds East 7,180.00 feet to a point having Coordinates of X = 2,292,057.49 and Y = 189,566.90, South 83 degrees 32 minutes 14 seconds East 1,776.43 feet to a point having Coordinates of X = 2,293,822.63 and Y = 189,366.95, South 83 degrees 35 minutes 00 seconds East 2,000.00 feet to a point having Coordinates of X = 2,295,810.10 and Y = 189,143.44, South 82 degrees 10 minutes 00 seconds West 2,700.00 feet to a point having Coordinates of X = 2,298,484.91 and Y = 188,775.45, South 80 degrees 14 minutes 00 seconds East 400.00 feet to a point having Coordinates of X = 2,298,879.11 and Y = 188,707.59, South 79 degrees 41 minutes 00 seconds East 600.00 feet to a point having Coordinates of X = 2,299,469.41 and Y = 188,600.14, South 78 degrees 51 minutes 00 seconds East 600.00 feet to a point having Coordinates of X = 2,300,058.09 and Y = 188,484.11 and South 77 degrees 39 minutes 00 seconds East 227.30 feet to a point having Coordinates of X = 2,300,280.13 and Y = 188,435.50; thence South 3,521.48 feet to a point having Coordinates of X = 2,300,280.13 and Y = 184,914.02; thence West 12,726.09 feet to a point having Coordinates of X = 2,287,554.04 and Y = 184,914.02; thence North 12,801.16 feet to the point of beginning, **LESS AND EXCEPT** any right, title, and interest in lands owned by and not under lease from the State of Louisiana, on behalf of the Lafourche Parish and Terrebonne Parish School Boards, situated in Section 16, Township 22 South, Range 20 East, Lafourche Parish and Terrebonne Parish, Louisiana, contained within the above described tract, (This lease includes only waterbottoms claimed and owned by the state and specifically excludes any land which the state may claim or own and to which the mineral rights are vested in the state), containing approximately **2,499 acres**, all as more particularly outlined on a plat on file in the Office of Mineral Resources, Department of Natural Resources. All bearings, distances and coordinates are based on Louisiana Coordinate System of 1927, (North or South Zone), where applicable.

NOTE: The above description of the Tract nominated for lease has been provided and corrected, where required, exclusively by the nomination party. Any mineral lease selected from this Tract and awarded by the Louisiana State Mineral and Energy Board shall be without warranty of any kind, either express, implied, or statutory, including, but not limited to, the implied warranties of merchantability and fitness for a particular purpose. Should the mineral lease awarded by the Louisiana State Mineral and Energy Board be subsequently modified, cancelled or abrogated due to the existence of conflicting leases, operating agreements, private claims or other future obligations or conditions which may affect all or any portion of the leased Tract, it shall not relieve the Lessee of the obligation to pay any bonus due thereon to the Louisiana State Mineral and Energy Board, nor shall the Louisiana State Mineral and Energy Board be obligated to refund any

consideration paid by the Lessor prior to such modification, cancellation, or abrogation, including, but not limited to, bonuses, rentals and royalties.

NOTE: The State of Louisiana does hereby reserve, and this lease shall be subject to, the imprescriptible right of surface use in the nature of a servitude in favor of the Department of Natural Resources, including its Offices and Commissions, for the sole purpose of implementing, constructing, servicing and maintaining approved coastal zone management and/or restoration projects. Utilization of any and all rights derived under this lease by the mineral lessee, its agents, successors or assigns, shall not interfere with nor hinder the reasonable surface use by the Department of Natural Resources, its Offices or Commissions, as herein above reserved.

Applicant: CYPRESS ENERGY CORPORATION

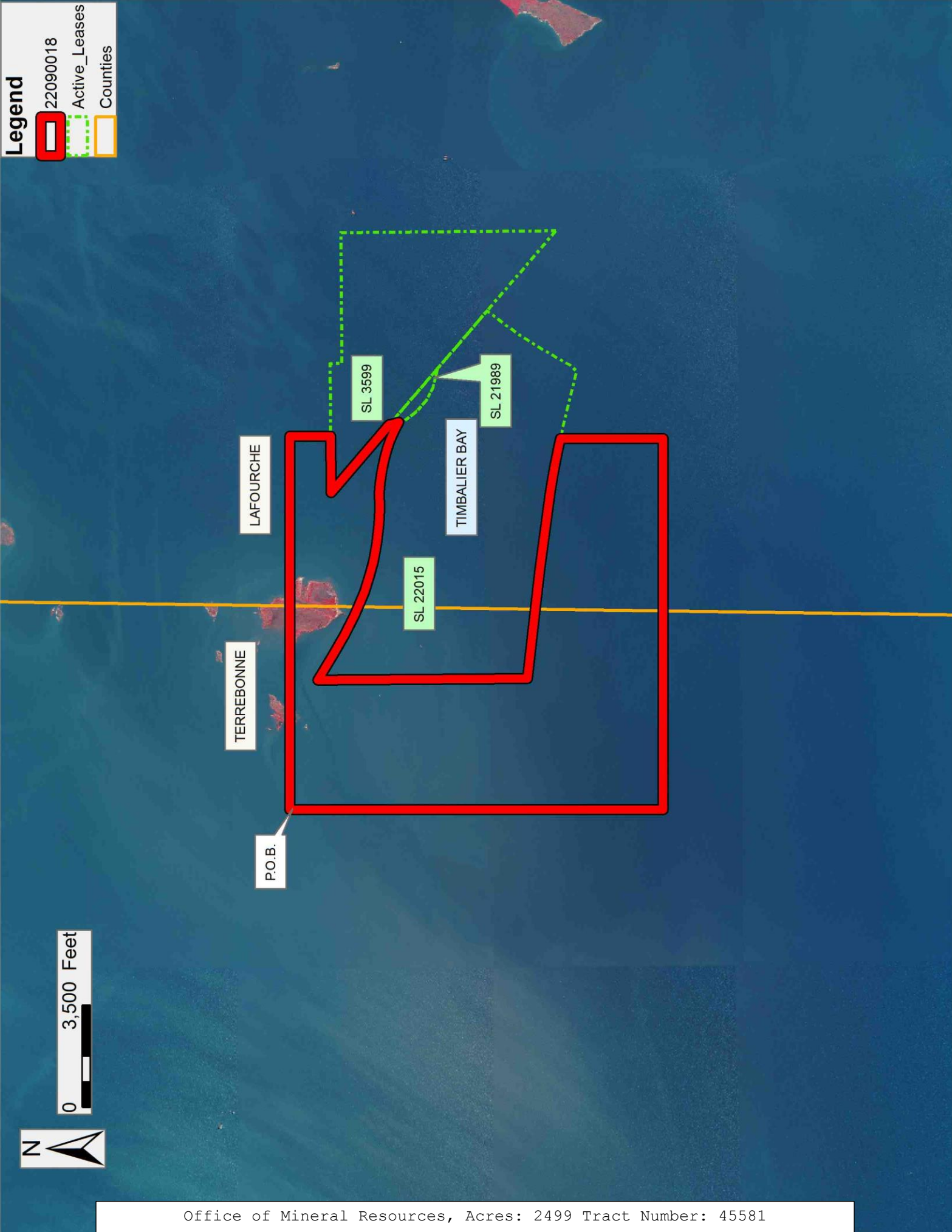
Bidder	Cash Payment	Price/Acre	Rental	Oil	Gas	Other

Legend

- 22090018
- Active_Leases
- Counties



0 3,500 Feet



TRACT 45582 - Lafourche Parish, Louisiana

All of the lands now or formerly constituting the beds and bottoms of all water bodies of every nature and description as to which title is vested in the State of Louisiana, together with all islands arising therein and other lands formed by accretion or by reliction, where allowed by law, excepting tax adjudicated lands, and not presently under mineral lease on September 14, 2022, situated in Lafourche Parish, Louisiana, and more particularly described as follows: Beginning at a point on the south boundary of State Lease No. 22015 having Coordinates of X = 2,300,280.13 and Y = 188,435.50; thence along the boundaries of said State Lease No. following courses: South 77 degrees 39 minutes 00 seconds East 372.70 feet to a point having Coordinates of X = 2,300,644.20 and Y = 188,355.78, South 77 degrees 16 minutes 00 seconds East 1,000.00 feet to a point having Coordinates of X = 2,301,619.61 and Y = 188,135.37, South 75 degrees 22 minutes 00 seconds East 1,000.00 feet to a point having Coordinates of X = 2,302,587.17 and Y = 187,882.74, North 44 degrees 08 minutes 00 seconds East 300.00 feet to a point having Coordinates of X = 2,302,796.07 and Y = 188,098.06, North 29 degrees 06 minutes 00 seconds East 800.00 feet to a point having Coordinates of X = 2,303,185.14 and Y = 188,797.07, North 31 degrees 04 minutes 00 seconds East 600.00 feet to a point having Coordinates of X = 2,303,494.76 and Y = 189,311.01, North 32 degrees 33 minutes 00 seconds East 600.00 feet to a point having Coordinates of X = 2,303,817.58 and Y = 189,816.77, North 35 degrees 18 minutes 00 seconds East 600.00 feet to a point having Coordinates of X = 2,304,164.29 and Y = 190,306.45 and North 37 degrees 22 minutes 00 seconds East 808.32 feet to its Northeast corner and a point on the west boundary of State Lease No. 3599, as amended, having Coordinates of X = 2,304,654.88 and Y = 190,948.88; thence along the boundaries of said State Lease No. 3599 the following courses: South 49 degrees 19 minutes 18 seconds East 3,615.16 feet to a point having Coordinates of X = 2,307,396.54 and Y = 188,592.47 and North 00 degrees 29 minutes 42 seconds West 4,043.60 feet to the Southwest corner of State Lease No. 14703, as amended having Coordinates of X = 2,307,361.60 and Y = 192,635.92; thence along the boundaries of said State Lease No. 14703 the following courses: North 43 degrees 30 minutes 18 seconds East 2,167.56 feet to a point having Coordinates of X = 2,308,853.80 and Y = 194,208.09 and North 43 degrees 10 minutes 43 seconds East 2,455.76 feet to its Northeast corner and the Southeast corner of State Lease No. 1480, Tract 2, as amended, having Coordinates of X = 2,310,534.22 and Y = 195,998.90; thence North 43 degrees 10 minutes 40 seconds East 325.79 feet along the east boundary of said State Lease No. 1480 to a point having Coordinates of X = 2,310,757.15 and Y = 196,236.48; thence South 89 degrees 56 minutes 44 seconds East 1,333.95 feet to a point having Coordinates of X = 2,312,091.10 and Y = 196,235.21; thence South 1,412.96 feet to a point on the north boundary of the East portion of State Lease No. 3258, as amended having Coordinates of X = 2,312,091.10 and Y = 194,822.26; thence along the boundaries of said State Lease No. 3258 the following courses: South 43 degrees 31 minutes 57 seconds West 1,251.82 feet to a point having Coordinates of X = 2,311,228.89 and Y = 193,914.70, South 1,399.85 feet to a point having Coordinates of X = 2,311,239.87 and Y = 192,514.86 and North 89 degrees 30 minutes 18 seconds East 2,332.73 feet to

a point having Coordinates of X = 2,313,572.51 and Y = 192,535.01; thence South 7,620.99 feet to a point having Coordinates of X = 2,313,572.51 and Y = 184,914.02; thence West 13,292.38 feet to a point having Coordinates of X = 2,300,280.13 and Y = 184,914.02; thence North 3,521.48 feet to the point of beginning, (This lease includes only waterbottoms claimed and owned by the state and specifically excludes any land which the state may claim or own and to which the mineral rights are vested in the state), containing approximately **1,972 acres**, all as more particularly outlined on a plat on file in the Office of Mineral Resources, Department of Natural Resources. All bearings, distances and coordinates are based on Louisiana Coordinate System of 1927, (North or South Zone), where applicable.

NOTE: The above description of the Tract nominated for lease has been provided and corrected, where required, exclusively by the nomination party. Any mineral lease selected from this Tract and awarded by the Louisiana State Mineral and Energy Board shall be without warranty of any kind, either express, implied, or statutory, including, but not limited to, the implied warranties of merchantability and fitness for a particular purpose. Should the mineral lease awarded by the Louisiana State Mineral and Energy Board be subsequently modified, cancelled or abrogated due to the existence of conflicting leases, operating agreements, private claims or other future obligations or conditions which may affect all or any portion of the leased Tract, it shall not relieve the Lessee of the obligation to pay any bonus due thereon to the Louisiana State Mineral and Energy Board, nor shall the Louisiana State Mineral and Energy Board be obligated to refund any consideration paid by the Lessor prior to such modification, cancellation, or abrogation, including, but not limited to, bonuses, rentals and royalties.

NOTE: The State of Louisiana does hereby reserve, and this lease shall be subject to, the imprescriptible right of surface use in the nature of a servitude in favor of the Department of Natural Resources, including its Offices and Commissions, for the sole purpose of implementing, constructing, servicing and maintaining approved coastal zone management and/or restoration projects. Utilization of any and all rights derived under this lease by the mineral lessee, its agents, successors or assigns, shall not interfere with nor hinder the reasonable surface use by the Department of Natural Resources, its Offices or Commissions, as herein above reserved.

Applicant: CYPRESS ENERGY CORPORATION

Bidder	Cash Payment	Price/Acre	Rental	Oil	Gas	Other

Legend



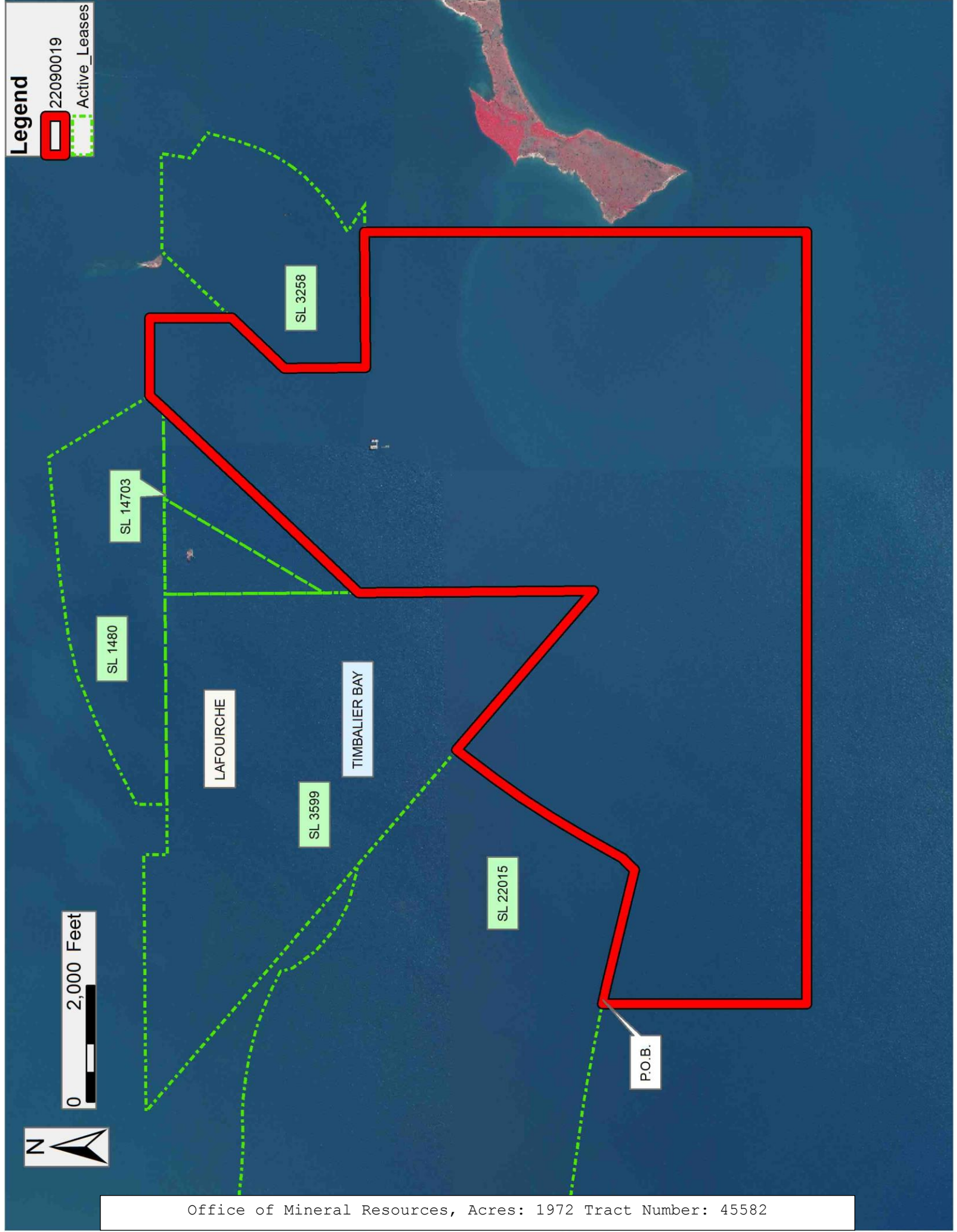
22090019

Active_Leases



0 2,000 Feet

Office of Mineral Resources, Acres: 1972 Tract Number: 45582



TRACT 45583 - Lafourche Parish, Louisiana

All of the lands now or formerly constituting the beds and bottoms of all water bodies of every nature and description as to which title is vested in the State of Louisiana, together with all islands arising therein and other lands formed by accretion or by reliction, where allowed by law, excepting tax adjudicated lands, and not presently under mineral lease on September 14, 2022, situated in Lafourche Parish, Louisiana, and more particularly described as follows: Beginning at a point on the south boundary of State Lease No. 3258, as amended having Coordinates of X = 2,313,572.51 and Y = 192,535.01; thence North 89 degrees 30 minutes 18 seconds East 455.90 feet along the south boundary of said State Lease No. 3258 to a point having Coordinates of X = 2,314,027.13 and Y = 192,538.95; thence East 14,009.57 feet to a point having Coordinates of X = 2,328,036.69 and Y = 192,538.95; thence South 7,624.93 feet to a point having Coordinates of X = 2,328,036.69 and Y = 184,914.02; thence West 14,464.18 feet to a point having Coordinates of X = 2,313,572.51 and Y = 184,914.02; thence North 7,621.00 feet to the point of beginning, **LESS AND EXCEPT** any right, title, and interest in lands owned by and not under lease from the State of Louisiana, on behalf of the Lafourche Parish School Board, situated in Section 16, Township 22 South, Range 21 East, Lafourche Parish, Louisiana, contained within the above described tract. (This lease includes only waterbottoms claimed and owned by the state and specifically excludes any land which the state may claim or own and to which the mineral rights are vested in the state), containing approximately **2,272 acres**, all as more particularly outlined on a plat on file in the Office of Mineral Resources, Department of Natural Resources. All bearings, distances and coordinates are based on Louisiana Coordinate System of 1927, (North or South Zone), where applicable.

NOTE: The above description of the Tract nominated for lease has been provided and corrected, where required, exclusively by the nomination party. Any mineral lease selected from this Tract and awarded by the Louisiana State Mineral and Energy Board shall be without warranty of any kind, either express, implied, or statutory, including, but not limited to, the implied warranties of merchantability and fitness for a particular purpose. Should the mineral lease awarded by the Louisiana State Mineral and Energy Board be subsequently modified, cancelled or abrogated due to the existence of conflicting leases, operating agreements, private claims or other future obligations or conditions which may affect all or any portion of the leased Tract, it shall not relieve the Lessee of the obligation to pay any bonus due thereon to the Louisiana State Mineral and Energy Board, nor shall the Louisiana State Mineral and Energy Board be obligated to refund any consideration paid by the Lessor prior to such modification, cancellation, or abrogation, including, but not limited to, bonuses, rentals and royalties.

NOTE: The State of Louisiana does hereby reserve, and this lease shall be subject to, the imprescriptible right of surface use in the nature of a servitude in favor of the Department of Natural Resources, including its Offices and Commissions, for the sole purpose of implementing, constructing, servicing and maintaining approved coastal zone management and/or

restoration projects. Utilization of any and all rights derived under this lease by the mineral lessee, its agents, successors or assigns, shall not interfere with nor hinder the reasonable surface use by the Department of Natural Resources, its Offices or Commissions, as herein above reserved.

Applicant: CYPRESS ENERGY CORPORATION

Bidder	Cash Payment	Price/Acre	Rental	Oil	Gas	Other

Legend



22090020

Active_Leases



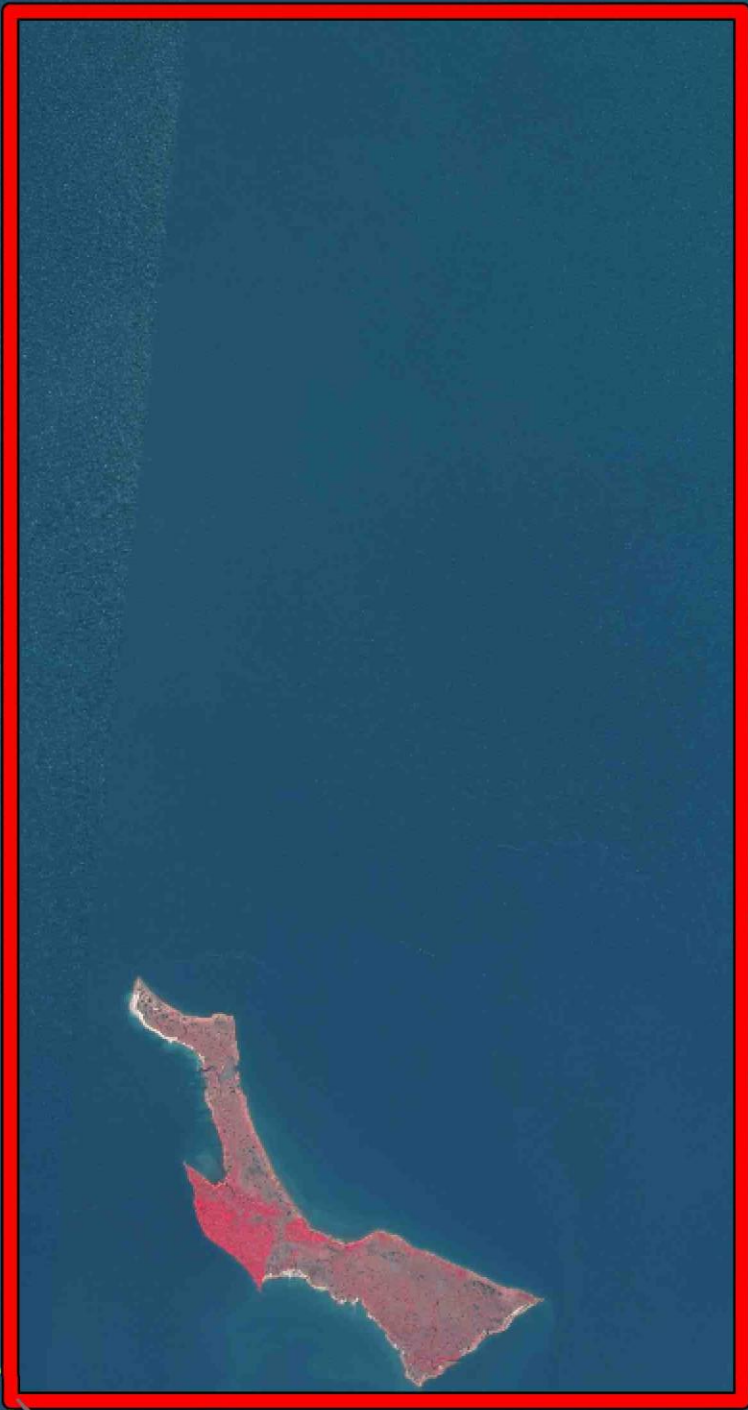
0 2,000 Feet

SL 3258

P.O.B.

TIMBALIER BAY

LAFOURCHE



TRACT 45584 - Portion of Block 113, South Timbalier Area, Revised, Terrebonne Parish, Louisiana

All of the lands now or formerly constituting the beds and bottoms of all water bodies of every nature and description as to which title is vested in the State of Louisiana, together with all islands arising therein and other lands formed by accretion or by reliction, where allowed by law, excepting tax adjudicated lands, and not presently under mineral lease on September 14, 2022, situated in Terrebonne Parish, Louisiana, and more particularly described as follows: Beginning at the Northeast corner of State Lease No. 199, as amended having Coordinates of X = 2,225,629.46 and Y = 189,081.28; thence South 89 degrees 55 minutes 44 seconds East 4,603.43 feet to a point having Coordinates of X = 2,230,232.88 and Y = 189,075.58; thence South 15,834.03 feet to a point having Coordinates of X = 2,230,232.88 and Y = 173,241.55; thence West 4,510.89 feet to the Northeast corner of State Lease No. 21109 having Coordinates of X = 2,225,721.99 and Y = 173,241.55; thence South 89 degrees 39 minutes 55 seconds West 4,531.24 feet along the north boundary of said State Lease No. 21109 to its Northwest corner having Coordinates of X = 2,221,190.83 and Y = 173,215.08; thence North 04 degrees 45 minutes 19 seconds West 1,380.56 feet to the Southeast corner of State Lease No. 21799 having Coordinates of X = 2,221,076.38 and Y = 174,590.89; thence North 28 degrees 56 minutes 09 seconds East 2,250.00 feet along the east boundary of said State Lease No. 21799 to its Northeast corner and the Southeast corner of State Lease No. 21783 having Coordinates of X = 2,222,165.00 and Y = 176,560.00; thence along the boundary of said State Lease No. 21783 the following courses: North 42 degrees 51 minutes 02 seconds East 380.83 feet to a point having Coordinates of X = 2,222,424.00 and Y = 176,839.20, North 19 degrees 00 minutes 23 seconds East 1,157.61 feet to a point having Coordinates of X = 2,222,801.00 and Y = 177,933.70, North 19 degrees 18 minutes 57 seconds East 1,299.98 feet to a point having Coordinates of X = 2,223,231.00 and Y = 179,160.50 and North 10 degrees 36 minutes 27 seconds East 1,222.29 feet to its Northeast corner and the Southeast corner of State Lease No. 21961 having Coordinates of X = 2,223,456.00 and Y = 180,361.90; thence North 25 degrees 21 minutes 58 seconds East 3,802.74 feet along the east boundary of said State Lease No. 21961 to its Northeast corner and a point on the east boundary of said State Lease No. 199 having Coordinates of X = 2,225,085.10 and Y = 183,798.01; thence along the boundaries of said State Lease No. 199 the following courses: North 57 degrees 41 minutes 54 seconds East 678.03 feet to a point having Coordinates of X = 2,225,658.20 and Y = 184,160.33 and North 00 degrees 20 minutes 05 seconds West 4,921.03 feet to the point of beginning, estimated to have **2,337.12 acres**, all as more particularly outlined on a plat on file in the Office of Mineral Resources, Department of Natural Resources. All bearings, distances and coordinates are based on Louisiana Coordinate System of 1927, (North or South Zone), where applicable.

NOTE: The above description of the Tract nominated for lease has been provided and corrected, where required, exclusively by the nomination party. Any mineral lease selected from this Tract and awarded by the Louisiana State

Mineral and Energy Board shall be without warranty of any kind, either express, implied, or statutory, including, but not limited to, the implied warranties of merchantability and fitness for a particular purpose. Should the mineral lease awarded by the Louisiana State Mineral and Energy Board be subsequently modified, cancelled or abrogated due to the existence of conflicting leases, operating agreements, private claims or other future obligations or conditions which may affect all or any portion of the leased Tract, it shall not relieve the Lessee of the obligation to pay any bonus due thereon to the Louisiana State Mineral and Energy Board, nor shall the Louisiana State Mineral and Energy Board be obligated to refund any consideration paid by the Lessor prior to such modification, cancellation, or abrogation, including, but not limited to, bonuses, rentals and royalties.

NOTE: The State of Louisiana does hereby reserve, and this lease shall be subject to, the imprescriptible right of surface use in the nature of a servitude in favor of the Department of Natural Resources, including its Offices and Commissions, for the sole purpose of implementing, constructing, servicing and maintaining approved coastal zone management and/or restoration projects. Utilization of any and all rights derived under this lease by the mineral lessee, its agents, successors or assigns, shall not interfere with nor hinder the reasonable surface use by the Department of Natural Resources, its Offices or Commissions, as herein above reserved.

NOTE: It appears, according to our records, that a portion of this Tract is located within the restrictive safety fairway area as set out by the Corps of Engineers, U.S. Army and/or the restrictive anchorage area as set out by the U.S. Coast Guard.

Applicant: CYPRESS ENERGY CORPORATION

Bidder	Cash Payment	Price/Acre	Rental	Oil	Gas	Other

Legend

- 22090009
- Blocks
- Active_Leases

TERREBONNE

BAY SAINTE ELAINE

SOUTH TIMBALIER AREA, REVISED

P.O.B.

SL 199

SL 21961

SL 21783

SL 21799

ST0113

SL 21109

0 2,500 Feet



TRACT 45585 - Portion of Blocks 113, and 119, South Timbalier Area, Revised, Terrebonne Parish, Louisiana

All of the lands now or formerly constituting the beds and bottoms of all water bodies of every nature and description as to which title is vested in the State of Louisiana, together with all islands arising therein and other lands formed by accretion or by reliction, where allowed by law, excepting tax adjudicated lands, and not presently under mineral lease on September 14, 2022, situated in Terrebonne Parish, Louisiana, and more particularly described as follows: Beginning at the Northeast corner of State Lease No. 21109 having Coordinates of X = 2,225,721.99 and Y = 173,241.55; thence East 4,510.89 feet to a point having Coordinates of X = 2,230,232.88 and Y = 173,241.55; thence South 15,559.66 feet to a point having Coordinates of X = 2,230,232.88 and Y = 157,681.89; thence West 10,919.74 feet to a point on the east boundary of State Lease No. 188, as amended, having Coordinates of X = 2,219,313.15 and Y = 157,681.89; thence along the boundaries of said State Lease No. 188 the following courses: North 00 degrees 17 minutes 47 seconds West 2,280.06 feet to a point having Coordinates of X = 2,219,301.43 and Y = 159,961.92, North 89 degrees 39 minutes 54 seconds East 5,486.89 feet to a point having Coordinates of X = 2,224,788.23 and Y = 159,993.99, North 02 degrees 14 minutes 54 seconds West 30.75 feet to a point having Coordinates of X = 2,224,787.02 and Y = 160,024.70, North 65 degrees 30 minutes 02 seconds West 805.00 feet to a point having Coordinates of X = 2,224,054.50 and Y = 160,358.52, North 35 degrees 45 minutes 00 seconds West 770.01 feet to a point having Coordinates of X = 2,223,604.62 and Y = 160,983.44, North 32 degrees 45 minutes 01 seconds East 185.00 feet to a point having Coordinates of X = 2,223,704.70 and Y = 161,139.03, North 41 degrees 45 minutes 00 seconds West 459.99 feet to a point having Coordinates of X = 2,223,398.40 and Y = 161,482.21, North 14 degrees 29 minutes 56 seconds East 410.01 feet to a point having Coordinates of X = 2,223,501.05 and Y = 161,879.16, North 44 degrees 49 minutes 59 seconds West 1,154.99 feet to a point having Coordinates of X = 2,222,686.73 and Y = 162,698.24, North 07 degrees 35 minutes 00 seconds West 305.00 feet to a point having Coordinates of X = 2,222,646.48 and Y = 163,000.57, North 36 degrees 40 minutes 03 seconds West 360.00 feet to a point having Coordinates of X = 2,222,431.50 and Y = 163,289.33, North 70 degrees 30 minutes 02 seconds West 505.00 feet to a point having Coordinates of X = 2,221,955.46 and Y = 163,457.90, North 39 degrees 23 minutes 59 seconds West 1,390.00 feet to a point having Coordinates of X = 2,221,073.19 and Y = 164,532.00, North 59 degrees 36 minutes 01 seconds West 310.00 feet to a point having Coordinates of X = 2,220,805.81 and Y = 164,688.87 and North 21 degrees 12 minutes 35 seconds West 593.14 feet to a point having Coordinates of X = 2,220,591.22 and Y = 165,241.83; thence East 562.48 feet to a point having Coordinates of X = 2,221,153.70 and Y = 165,241.83; thence North 00 degrees 17 minutes 46 seconds East 3,824.55 feet to the Southwest corner of said State Lease No. 21109 having Coordinates of X = 2,221,173.46 and Y = 169,066.33; thence along the boundaries of said State Lease No. 21109 the following courses: East 5,198.26 feet to a point having Coordinates of X = 2,226,371.72 and Y = 169,066.33, South 19 degrees 57 minutes 05 seconds

East 4,786.72 feet to a point having Coordinates of X = 2,228,005.06 and Y = 164,566.90, North 00 degrees 00 minutes 02 seconds West 5,696.08 feet to a point having Coordinates of X = 2,228,005.00 and Y = 170,262.98 and North 37 degrees 28 minutes 10 seconds West 3,752.87 feet to the point of beginning, estimated to have **2,497.95 acres**, all as more particularly outlined on a plat on file in the Office of Mineral Resources, Department of Natural Resources. All bearings, distances and coordinates are based on Louisiana Coordinate System of 1927, (North or South Zone), where applicable.

NOTE: The above description of the Tract nominated for lease has been provided and corrected, where required, exclusively by the nomination party. Any mineral lease selected from this Tract and awarded by the Louisiana State Mineral and Energy Board shall be without warranty of any kind, either express, implied, or statutory, including, but not limited to, the implied warranties of merchantability and fitness for a particular purpose. Should the mineral lease awarded by the Louisiana State Mineral and Energy Board be subsequently modified, cancelled or abrogated due to the existence of conflicting leases, operating agreements, private claims or other future obligations or conditions which may affect all or any portion of the leased Tract, it shall not relieve the Lessee of the obligation to pay any bonus due thereon to the Louisiana State Mineral and Energy Board, nor shall the Louisiana State Mineral and Energy Board be obligated to refund any consideration paid by the Lessor prior to such modification, cancellation, or abrogation, including, but not limited to, bonuses, rentals and royalties.




NOTE: The State of Louisiana does hereby reserve, and this lease shall be subject to, the imprescriptible right of surface use in the nature of a servitude in favor of the Department of Natural Resources, including its Offices and Commissions, for the sole purpose of implementing, constructing, servicing and maintaining approved coastal zone management and/or restoration projects. Utilization of any and all rights derived under this lease by the mineral lessee, its agents, successors or assigns, shall not interfere with nor hinder the reasonable surface use by the Department of Natural Resources, its Offices or Commissions, as herein above reserved.

NOTE: It appears, according to our records, that a portion of this Tract is located within the restrictive safety fairway area as set out by the Corps of Engineers, U.S. Army and/or the restrictive anchorage area as set out by the U.S. Coast Guard.

Applicant: CYPRESS ENERGY CORPORATION

Bidder	Cash Payment	Price/Acre	Rental	Oil	Gas	Other

Legend

-  22090010
-  Blocks
-  Active_Leases



0 2,500 Feet

Office of Mineral Resources, Acres: 2497.95 Tract Number: 45585

SOUTH TIMBALIER AREA, REVISED

ST0113

P.O.B.

TERREBONNE

SL 21109

BAY SAINTE ELAINE

SL 188

SL 188

ST0119

LAKE PELTO