

TRACT 45586 - De Soto Parish, Louisiana

A certain Tract of land, excluding the beds and bottoms of all navigable waters, belonging to and not presently under mineral lease from Desoto Parish Police Jury on September 14, 2022, being more fully described as follows: The Southeast Quarter (SE/4) of Section 26, Township 13 North, Range 14 West, DeSoto Parish, Louisiana, containing approximately **162.263 acres**, all as more particularly outlined on a plat on file in the Office of Mineral Resources, Department of Natural Resources. The description is based on information provided by the State Agency regarding location and ownership of surface and mineral rights. All bearings, distances and coordinates, if applicable, are based on Louisiana Coordinate System of 1927, (North or South Zone).

NOTE: The above description of the Tract nominated for lease has been provided and corrected, where required, exclusively by the nomination party. Any mineral lease selected from this Tract and awarded by the Louisiana State Mineral and Energy Board shall be without warranty of any kind, either express, implied, or statutory, including, but not limited to, the implied warranties of merchantability and fitness for a particular purpose. Should the mineral lease awarded by the Louisiana State Mineral and Energy Board be subsequently modified, cancelled or abrogated due to the existence of conflicting leases, operating agreements, private claims or other future obligations or conditions which may affect all or any portion of the leased Tract, it shall not relieve the Lessee of the obligation to pay any bonus due thereon to the Louisiana State Mineral and Energy Board, nor shall the Louisiana State Mineral and Energy Board be obligated to refund any consideration paid by the Lessor prior to such modification, cancellation, or abrogation, including, but not limited to, bonuses, rentals and royalties.

NOTE: The DeSoto Parish Police Jury will require a minimum royalty of not less than 25%.

NOTE: No drilling operations shall be conducted on the above leased land without the express written consent of the DeSoto Parish Police Jury.

NOTE: Lease will be given without any warranty of title by the DeSoto Parish Police Jury, either expressed or implied, not even for the return of any bonus consideration.

Applicant: CYPRESS ENERGY CORPORATION to Agency and by Resolution from the Desoto Parish Police Jury authorizing the Mineral Board to act in its behalf

Bidder	Cash Payment	Price/Acre	Rental	Oil	Gas	Other

TRACT 45587 - Natchitoches Parish, Louisiana

A certain Tract of land, excluding the beds and bottoms of all navigable waters, belonging to and not presently under mineral lease from Sabine Parish Waterworks District #1 on September 14, 2022, being more fully described as follows: A certain tract of land situated within the Southwest Quarter of the Southwest Quarter (SW/4 of SW/4) of Section 7, Township 10 North, Range 10 West, Natchitoches Parish, Louisiana, being more fully described in that certain Sale dated July 29, 2020, from Ajax Beulah Water Association, Inc. to Sabine Parish Waterworks District No. 1, recorded in COB 740, Page 1, under Entry No. 0421032 of the records of the Natchitoches Parish Clerk of Court, containing approximately **0.49 acres**, all as more particularly outlined on a plat on file in the Office of Mineral Resources, Department of Natural Resources. The description is based on information provided by the State Agency regarding location and ownership of surface and mineral rights. All bearings, distances and coordinates, if applicable, are based on Louisiana Coordinate System of 1927, (North or South Zone).

NOTE: The above description of the Tract nominated for lease has been provided and corrected, where required, exclusively by the nomination party. Any mineral lease selected from this Tract and awarded by the Louisiana State Mineral and Energy Board shall be without warranty of any kind, either express, implied, or statutory, including, but not limited to, the implied warranties of merchantability and fitness for a particular purpose. Should the mineral lease awarded by the Louisiana State Mineral and Energy Board be subsequently modified, cancelled or abrogated due to the existence of conflicting leases, operating agreements, private claims or other future obligations or conditions which may affect all or any portion of the leased Tract, it shall not relieve the Lessee of the obligation to pay any bonus due thereon to the Louisiana State Mineral and Energy Board, nor shall the Louisiana State Mineral and Energy Board be obligated to refund any consideration paid by the Lessor prior to such modification, cancellation, or abrogation, including, but not limited to, bonuses, rentals and royalties.

Applicant: CYPRESS ENERGY CORPORATION to Agency and by Resolution from the Sabine Parish Waterworks District #1 authorizing the Mineral Board to act in its behalf

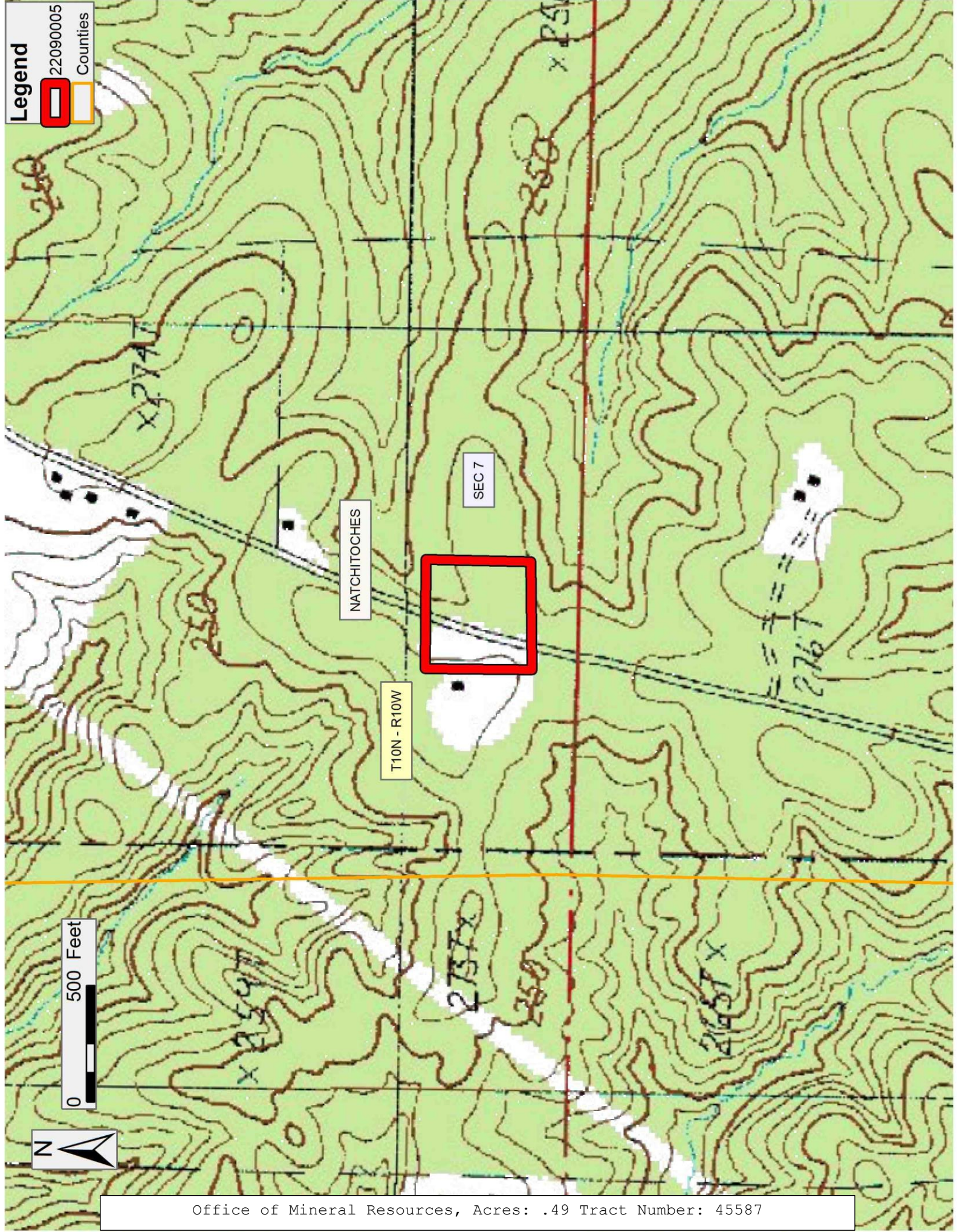
Bidder	Cash Payment	Price/Acre	Rental	Oil	Gas	Other

Legend



0 500 Feet

Office of Mineral Resources, Acres: .49 Tract Number: 45587



TRACT 45588 - St. Mary Parish School Board - St. Mary Parish, Louisiana

The State Mineral and Energy Board acting on behalf of the St. Mary Parish School Board, pursuant to Resolution(s) adopted by that (those) body(ies) and in accordance with Louisiana Revised Statutes 30:121-136 and 151-156, as amended, and Article XIV, Section 16(A)(9) and (B) of the Louisiana Constitution of 1974, as same may be continued and promulgated in proper statutory form and, further, amended from time to time, advertises the lands not under mineral lease on September 14, 2022, excluding the beds and bottoms of all navigable water bodies located within the following: All or a portion of Section 15 and 17 and 10 and 9 and 16, Township 15 South, Range 09 East in St. Mary Parish, Louisiana, All of the Northeast Quarter (NE) and the South Half (S/2) of Section 16, Township 15 South-Range 9 East, containing approximately **480 acres**, all as more particularly outlined on a plat on file in the Office of Mineral Resources, Department of Natural Resources. All bearings, distances and coordinates are based on Louisiana Coordinate System of 1927, (North or South Zone).

NOTE: The above description of the Tract nominated for lease has been provided and corrected, where required, exclusively by the nomination party. Any mineral lease selected from this Tract and awarded by the Louisiana State Mineral and Energy Board shall be without warranty of any kind, either express, implied, or statutory, including, but not limited to, the implied warranties of merchantability and fitness for a particular purpose. Should the mineral lease awarded by the Louisiana State Mineral and Energy Board be subsequently modified, cancelled or abrogated due to the existence of conflicting leases, operating agreements, private claims or other future obligations or conditions which may affect all or any portion of the leased Tract, it shall not relieve the Lessee of the obligation to pay any bonus due thereon to the Louisiana State Mineral and Energy Board, nor shall the Louisiana State Mineral and Energy Board be obligated to refund any consideration paid by the Lessor prior to such modification, cancellation, or abrogation, including, but not limited to, bonuses, rentals and royalties.

NOTE: In the event Lessee, or its assigns acquires a lease or leases from other parties whose land lies within one (1) mile of any boundary of the Leased Premises at total consideration including but not limited to a bonus, rental or royalty higher than that paid herein, then, Lessee, or its assigns, shall notify Lessor of such higher consideration. Thereafter, upon Lessor's request, Lessee or its assigns shall immediately enter into a lease amendment with Lessor, which shall provide for such consideration equal to the highest terms paid within such one (1) mile radius. Such high terms shall be made retroactive to the effective date of this Lease.

NOTE: The St. Mary Parish School Board will require a minimum royalty of twenty-five (25%) percent.

Applicant: STAFF OFFICE OF MINERAL RESOURCES to Agency and by Resolution from the St. Mary Parish School Board authorizing the Mineral Board to act in its behalf

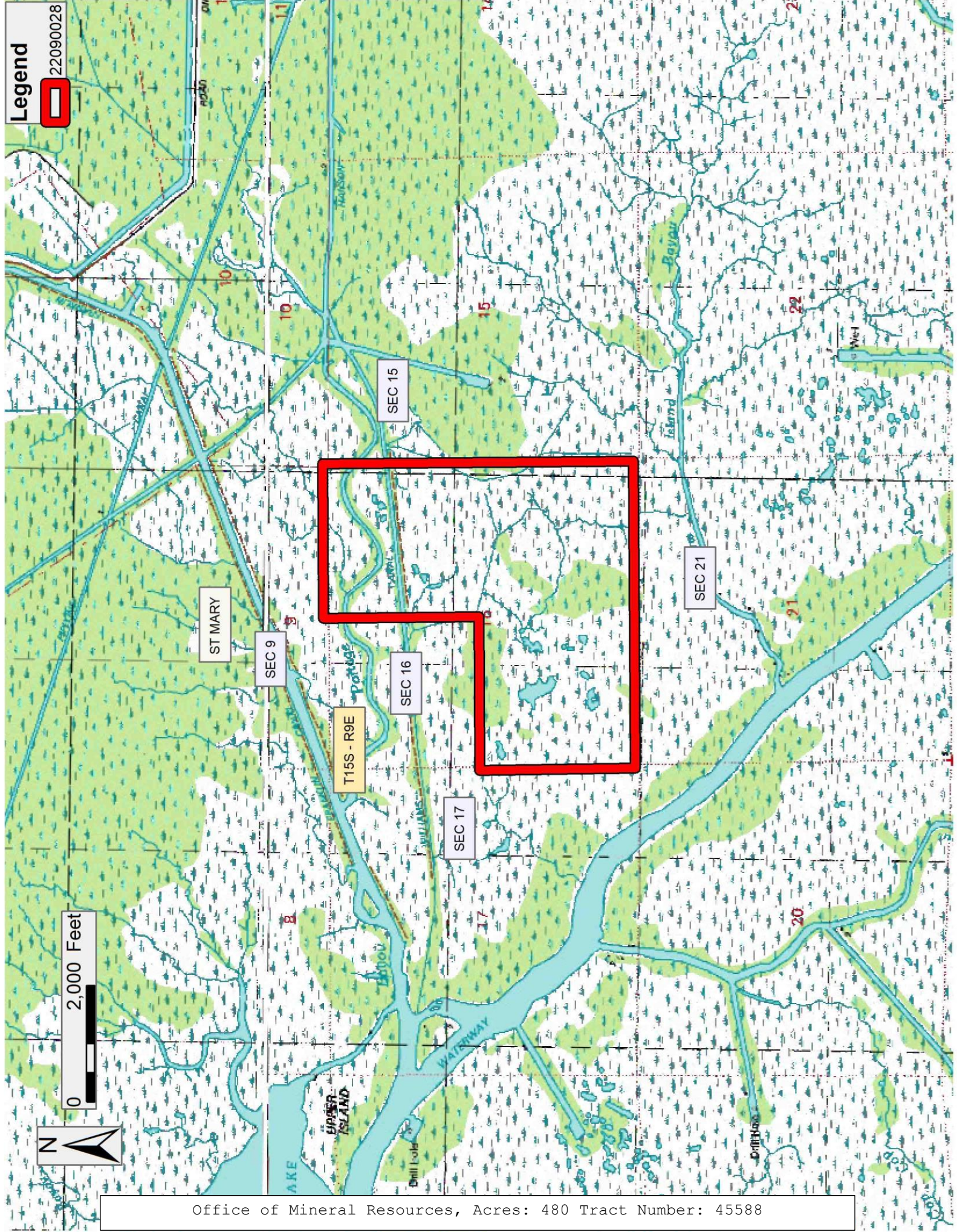
Bidder	Cash Payment	Price/Acre	Rental	Oil	Gas	Other

Legend

22090028



0 2,000 Feet



Office of Mineral Resources, Acres: 480 Tract Number: 45588