

TRACT 45593 - Caddo and De Soto Parishes, Louisiana

All of the lands now or formerly constituting the beds and bottoms of all water bodies of every nature and description as to which title is vested in the State of Louisiana, together with all islands arising therein and other lands formed by accretion or by reliction, where allowed by law, excepting tax adjudicated lands, and not presently under mineral lease on October 12, 2022, situated in Caddo and De Soto Parishes, Louisiana, and more particularly described as follows: Beginning at a point having Coordinates of X = 1,636,023.51 and Y = 605,380.00; thence East 4,866.49 feet to the Northwest corner of State Lease No. 20148 having Coordinates of X = 1,640,890.00 and Y = 605,380.00; thence Southerly approximately 347 feet along the west boundary of said State Lease No. 20148 to its Southwest corner and the Northwest corner of State Lease No. 6111; thence Southerly approximately 3,396 feet and Southeasterly approximately 1,622 feet along the Western boundary of said State Lease No. 6111 to the Northeast corner of State Lease No. 13920; thence Westerly approximately 145 feet along the North line of said State Lease No. 13920 to its Northwest corner; thence Westerly approximately 5,058 feet to the most Easterly Southeast corner of said State Lease No. 19929, said corner also being the Northeast corner of State Lease No. 16503, having Coordinates of X = 1,636,023.51 and Y = 600,042.00; thence North 5,338.00 feet along the Eastern boundary of said State Lease No. 19929 to the point of beginning, **LESS AND EXCEPT** that portion, if any, of State Lease Nos 6111, 13920 and 16503 that may be within the above described tract, containing approximately **71 acres**, all as more particularly outlined on a plat on file in the Office of Mineral Resources, Department of Natural Resources. All bearings, distances and coordinates are based on Louisiana Coordinate System of 1927, (North or South Zone), where applicable.

NOTE: The above description of the Tract nominated for lease has been provided and corrected, where required, exclusively by the nomination party. Any mineral lease selected from this Tract and awarded by the Louisiana State Mineral and Energy Board shall be without warranty of any kind, either express, implied, or statutory, including, but not limited to, the implied warranties of merchantability and fitness for a particular purpose. Should the mineral lease awarded by the Louisiana State Mineral and Energy Board be subsequently modified, cancelled or abrogated due to the existence of conflicting leases, operating agreements, private claims or other future obligations or conditions which may affect all or any portion of the leased Tract, it shall not relieve the Lessee of the obligation to pay any bonus due thereon to the Louisiana State Mineral and Energy Board, nor shall the Louisiana State Mineral and Energy Board be obligated to refund any consideration paid by the Lessor prior to such modification, cancellation, or abrogation, including, but not limited to, bonuses, rentals and royalties.

Applicant: CYPRESS ENERGY CORPORATION

Bidder	Cash Payment	Price/Acre	Rental	Oil	Gas	Other

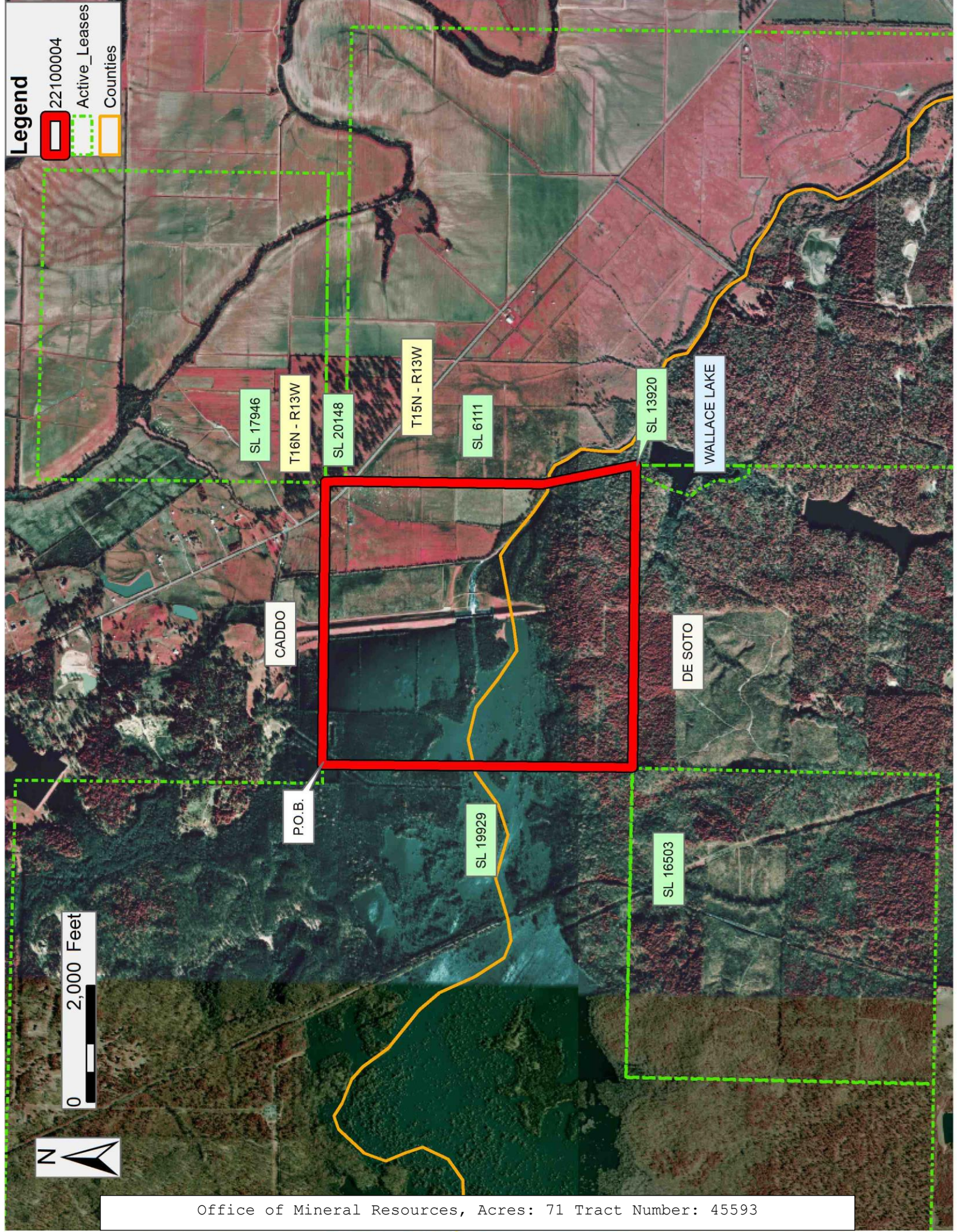
Legend

- 22100004
- Active_Leases
- Counties

0 2,000 Feet



Office of Mineral Resources, Acres: 71 Tract Number: 45593



TRACT 45594 - Plaquemines Parish, Louisiana

All of the lands now or formerly constituting the beds and bottoms of all water bodies of every nature and description as to which title is vested in the State of Louisiana, together with all islands arising therein and other lands formed by accretion or by reliction, where allowed by law, excepting tax adjudicated lands, and not presently under mineral lease on October 12, 2022, situated in Plaquemines Parish, Louisiana, and more particularly described as follows: Beginning at a point having Coordinates of X = 2,488,016.84 and Y = 240,834.18; thence North 00 degrees 00 minute 06 seconds West approximately 10,357 feet to a point of intersection with the Southern boundary of that certain Agreement between Cockrell, et al and the State of Louisiana, dated May 16, 1938, recorded in Book 88, Page 189, in Plaquemines Parish; thence along the boundary of said Agreement the following: Easterly approximately 10,073 feet and Northerly approximately 1,920 feet to a point of intersection with a line bearing North 89 degrees 59 minutes 33 seconds West and commencing at a point having Coordinates of X = 2,502,213.06 and Y = 253,246.61; thence South 89 degrees 59 minutes 33 seconds East approximately 4,150 feet to a point having Coordinates of X = 2,502,213.06 and Y = 253,246.61; thence South 7,630.80 feet to a point being the Northwest corner of Tract 1 of State Lease No. 1464, as amended, having Coordinates of X = 2,502,213.06 and Y = 245,615.81; thence along the boundary of said Tract 1 of State Lease No. 1464, as amended, the following courses: South 00 degrees 04 minutes 57 seconds East 2,826.66 to a point having Coordinates of X = 2,502,217.13 and Y = 242,789.15, South 87 degrees 56 minutes 35 seconds West 5,401.07 feet to a point having Coordinates of X = 2,496,819.54 and Y = 242,595.29, and South 00 degrees 07 minutes 42 seconds East 1,690.44 feet to its Southwest corner, said corner also being a point on Northern boundary of State Lease No. 1753, as amended, having Coordinates of X = 2,496,823.33 and Y = 240,904.86; thence South 89 degrees 15 minutes 00 seconds West 5,397.33 feet along the Northern boundary of said State Lease No. 1753, as amended, to its Southernmost Northwest corner having Coordinates of X = 2,491,426.46 and Y = 240,834.12; thence North 89 degrees 59 minutes 56 seconds West 3,409.62 feet to the point of beginning, **LESS AND EXCEPT** any right, title, and interest in lands currently covered by the Ernest Cockrell, Jr., et al lease recorded in COB 66, Folio 402, as well as, The Moran Corporation, et al lease recorded in COB 65, Folio 498, Plaquemines Parish, Louisiana, contained within the above described tract; **LESS AND EXCEPT** IN THEIR ENTIRETY STATE LEASE NO. 21932, STATE LEASE NO. 21969 AND STATE LEASE NO. 21968 AS FOLLOWS: Commencing at a point being the point of beginning of the above described nominated tract having Coordinates of X = 2,488,016.84 and Y = 240,834.18; thence North 06 degrees 42 minutes 42 seconds East 4,134.15 feet to the Point of Beginning of said State Leases having Coordinates of 2,488,500.00 and Y = 244,940.00, being the Southwest corner of said State Lease No. 21932; thence along the boundaries of said State Leases the following courses: North 2,270.00 feet to a point having Coordinates of X = 2,488,500.00 and Y = 247,210.00, East 3,265.00 feet to a point having Coordinates of X = 2,491,765.00 and Y = 247,210.00, North 4,000.00 feet to a point having Coordinates of X = 2,491,765.00 and Y = 251,210.00, East 3,655.00 feet to a point having Coordinates of X =

2,495,420.00 and Y = 251,210.00, South 1,710.00 feet to a point having Coordinates of X = 2,495,420.00 and Y = 249,500.00, and East 1,700.00 feet to a point of intersection with the West boundary of said State Lease No. 21969 having Coordinates of X = 2,497,120.00 and Y = 249,500.00; thence North 660.00 feet to a point having Coordinates of X = 2,497,120.00 and Y = 250,160.00, East 2,370.00 feet to a point having Coordinates of X = 2,499,490.00 and Y = 250,160.00, South 1,180.00 feet to a point having Coordinates of X = 2,499,490.00 and Y = 248,980.00, West 1,155.00 feet to a point having Coordinates of X = 2,498,335.00 and Y = 248,980.00, South 3,110.00 feet to a point having Coordinates of X = 2,498,335.00 and Y = 245,870.00, West 1,215.00 feet to a point being its Southwest corner and the Northeast corner of said State Lease No. 21968 having Coordinates of X = 2,497,120.00 and Y = 245,870.00; thence South 930.00 feet to a point having Coordinates of X = 2,497,120.00 and Y = 244,940.00 and West 3,845.00 feet to a point being its Southwest corner and the Southeast corner of said State Lease No. 21932 having Coordinates of X = 2,493,275.00 and Y = 244,940.00; thence West 4,775.00 feet to the Point of Beginning. The above described tract contains approximately **1,051 acres**, all as more particularly outlined on a plat on file in the Office of Mineral Resources, Department of Natural Resources. All bearings, distances and coordinates are based on Louisiana Coordinate System of 1927, (North or South Zone), where applicable.

NOTE: The above description of the Tract nominated for lease has been provided and corrected, where required, exclusively by the nomination party. Any mineral lease selected from this Tract and awarded by the Louisiana State Mineral and Energy Board shall be without warranty of any kind, either express, implied, or statutory, including, but not limited to, the implied warranties of merchantability and fitness for a particular purpose. Should the mineral lease awarded by the Louisiana State Mineral and Energy Board be subsequently modified, cancelled or abrogated due to the existence of conflicting leases, operating agreements, private claims or other future obligations or conditions which may affect all or any portion of the leased Tract, it shall not relieve the Lessee of the obligation to pay any bonus due thereon to the Louisiana State Mineral and Energy Board, nor shall the Louisiana State Mineral and Energy Board be obligated to refund any consideration paid by the Lessor prior to such modification, cancellation, or abrogation, including, but not limited to, bonuses, rentals and royalties.

NOTE: The State of Louisiana does hereby reserve, and this lease shall be subject to, the imprescriptible right of surface use in the nature of a servitude in favor of the Department of Natural Resources, including its Offices and Commissions, for the sole purpose of implementing, constructing, servicing and maintaining approved coastal zone management and/or restoration projects. Utilization of any and all rights derived under this lease by the mineral lessee, its agents, successors or assigns, shall not interfere with nor hinder the reasonable surface use by the Department of Natural Resources, its Offices or Commissions, as herein above reserved.

Applicant: OIL LAND SERVICES, INC

Bidder	Cash Payment	Price/Acre	Rental	Oil	Gas	Other

Legend

- 22100003
- Active_Leases
- Freeze_Statute



0 2,000 Feet

PLAQUEMINES

BARATARIA BAY

PIPE BAY

ROBINSON CANAL

SL 21969

SL 1464

SL 21968

SL 1753

SL 21932

BAY LA MER

BAY LONG

P.O.B.