

TRACT 45716 - Vermilion Parish, Louisiana

All of the lands now or formerly constituting the beds and bottoms of all water bodies of every nature and description as to which title is vested in the State of Louisiana, together with all islands arising therein and other lands formed by accretion or by reliction, where allowed by law, excepting tax adjudicated lands, and not presently under mineral lease on January 10, 2024, situated in Vermilion Parish, Louisiana, and more particularly described as follows: Beginning at a point having Coordinates of X = 1,744,620.01 and Y = 433,810.82; thence South 70 degrees 51 minutes 47 seconds East 7,047.23 feet to a point having Coordinates of X = 1,751,277.80 and Y = 431,500.55; thence South 4,666.38 feet to a point having Coordinates of X = 1,751,277.80 and Y = 426,834.17; thence North 85 degrees 19 minutes 22 seconds West 6,680.03 feet to a point having Coordinates of X = 1,744,620.01 and Y = 427,378.88; thence North 6,431.94 feet to the point of beginning, (This tract includes only waterbottoms claimed and owned by the state and specifically excludes any land which the state may claim or own and to which the mineral rights are vested in the state), containing approximately **58 acres**, all as more particularly outlined on a plat on file in the Office of Mineral Resources, Department of Natural Resources. All bearings, distances and coordinates are based on Louisiana Coordinate System of 1927, (North or South Zone), where applicable.

NOTE: The above description of the Tract nominated for lease has been provided and corrected, where required, exclusively by the nomination party. Any mineral lease selected from this Tract and awarded by the Louisiana State Mineral and Energy Board shall be without warranty of any kind, either express, implied, or statutory, including, but not limited to, the implied warranties of merchantability and fitness for a particular purpose. Should the mineral lease awarded by the Louisiana State Mineral and Energy Board be subsequently modified, cancelled or abrogated due to the existence of conflicting leases, operating agreements, private claims or other future obligations or conditions which may affect all or any portion of the leased Tract, it shall not relieve the Lessee of the obligation to pay any bonus due thereon to the Louisiana State Mineral and Energy Board, nor shall the Louisiana State Mineral and Energy Board be obligated to refund any consideration paid by the Lessor prior to such modification, cancellation, or abrogation, including, but not limited to, bonuses, rentals and royalties.

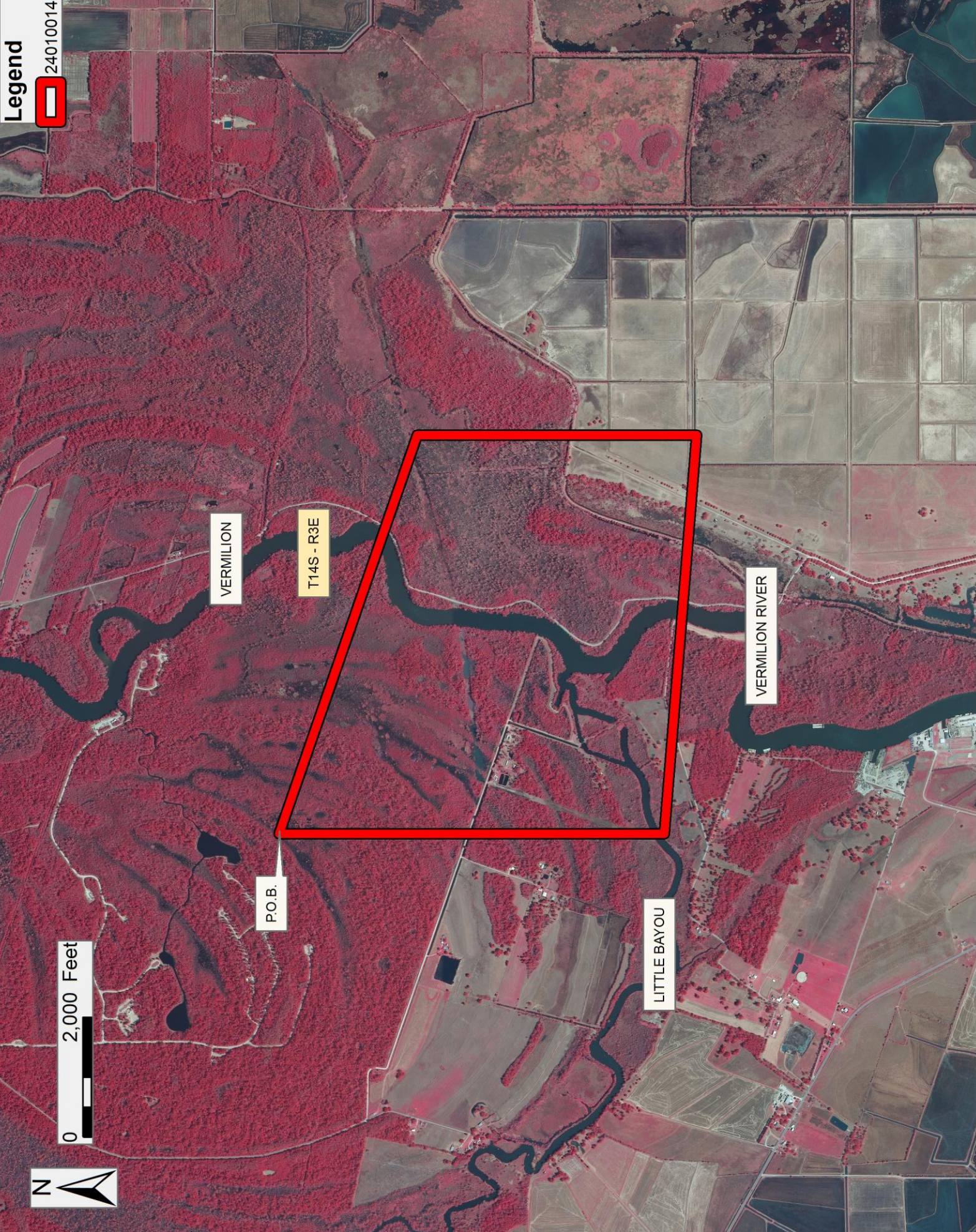
NOTE: The State of Louisiana does hereby reserve, and this lease shall be subject to, the imprescriptible right of surface use in the nature of a servitude in favor of the Department of Natural Resources, including its Offices and Commissions, for the sole purpose of implementing, constructing, servicing and maintaining approved coastal zone management and/or restoration projects. Utilization of any and all rights derived under this lease by the mineral lessee, its agents, successors or assigns, shall not interfere with nor hinder the reasonable surface use by the Department of Natural Resources, its Offices or Commissions, as herein above reserved.

Applicant: RELIANT LAND SERVICES, L.L.C.

Bidder	Cash Payment	Price/Acre	Rental	Oil	Gas	Other

Legend

24010014



2,000 Feet

0



Office of Mineral Resources, Acres: 58 Tract Number: 45716

TRACT 45717 - Vermilion Parish, Louisiana

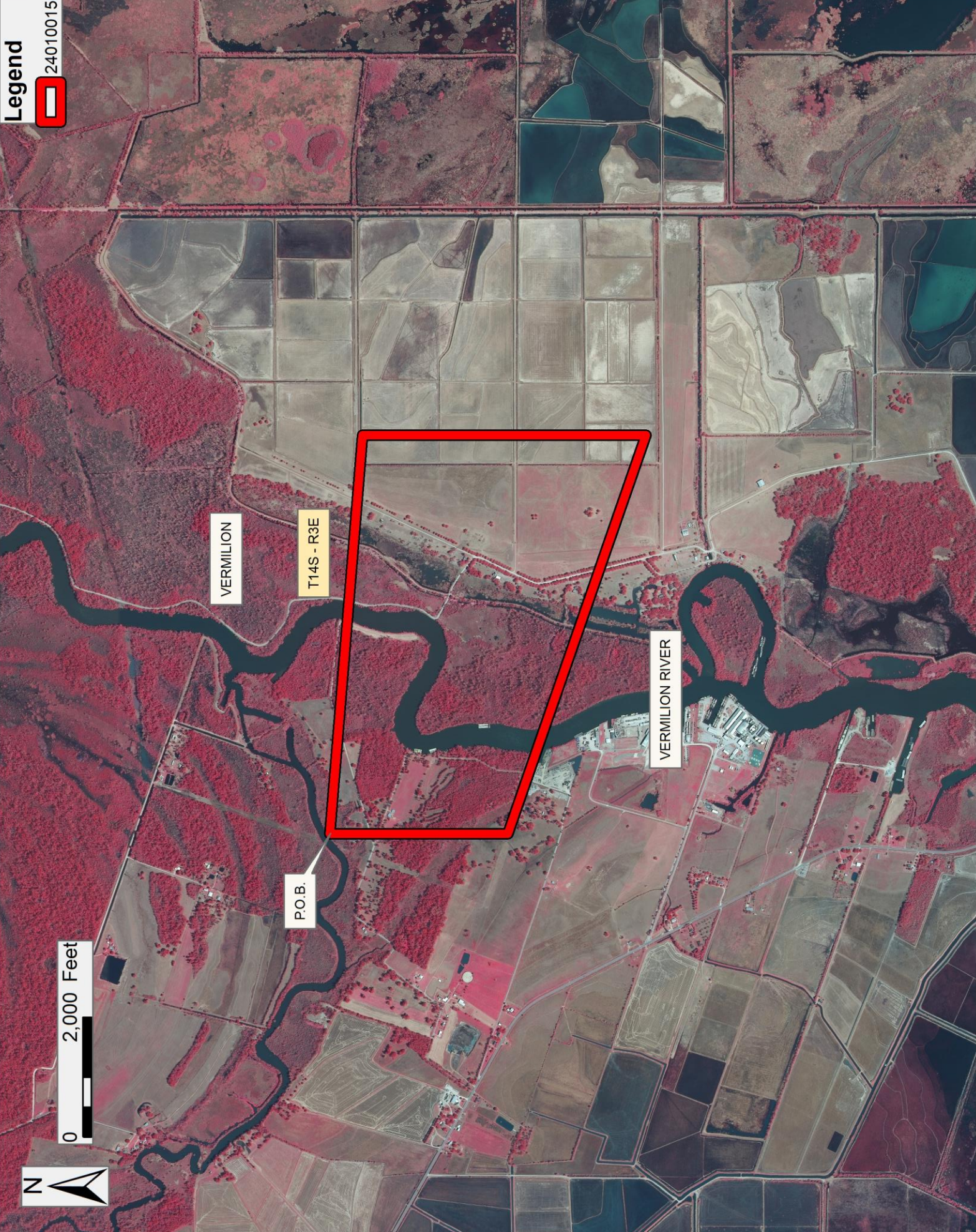
All of the lands now or formerly constituting the beds and bottoms of all water bodies of every nature and description as to which title is vested in the State of Louisiana, together with all islands arising therein and other lands formed by accretion or by reliction, where allowed by law, excepting tax adjudicated lands, and not presently under mineral lease on January 10, 2024, situated in Vermilion Parish, Louisiana, and more particularly described as follows: Beginning at a point having Coordinates of X = 1,744,620.01 and Y = 427,378.88; thence South 85 degrees 19 minutes 22 seconds East 6,680.03 feet to a point having Coordinates of X = 1,751,277.80 and Y = 426,834.17; thence South 4,729.49 feet to a point having Coordinates of X = 1,751,277.80 and Y = 422,104.68; thence North 70 degrees 55 minutes 02 seconds West 7,044.93 feet to a point having Coordinates of X = 1,744,620.01 and Y = 424,407.92; thence North 2,970.96 feet to the point of beginning, containing approximately **44 acres**, all as more particularly outlined on a plat on file in the Office of Mineral Resources, Department of Natural Resources. All bearings, distances and coordinates are based on Louisiana Coordinate System of 1927, (North or South Zone), where applicable.

NOTE: The above description of the Tract nominated for lease has been provided and corrected, where required, exclusively by the nomination party. Any mineral lease selected from this Tract and awarded by the Louisiana State Mineral and Energy Board shall be without warranty of any kind, either express, implied, or statutory, including, but not limited to, the implied warranties of merchantability and fitness for a particular purpose. Should the mineral lease awarded by the Louisiana State Mineral and Energy Board be subsequently modified, cancelled or abrogated due to the existence of conflicting leases, operating agreements, private claims or other future obligations or conditions which may affect all or any portion of the leased Tract, it shall not relieve the Lessee of the obligation to pay any bonus due thereon to the Louisiana State Mineral and Energy Board, nor shall the Louisiana State Mineral and Energy Board be obligated to refund any consideration paid by the Lessor prior to such modification, cancellation, or abrogation, including, but not limited to, bonuses, rentals and royalties.

NOTE: The State of Louisiana does hereby reserve, and this lease shall be subject to, the imprescriptible right of surface use in the nature of a servitude in favor of the Department of Natural Resources, including its Offices and Commissions, for the sole purpose of implementing, constructing, servicing and maintaining approved coastal zone management and/or restoration projects. Utilization of any and all rights derived under this lease by the mineral lessee, its agents, successors or assigns, shall not interfere with nor hinder the reasonable surface use by the Department of Natural Resources, its Offices or Commissions, as herein above reserved.

Applicant: RELIANT LAND SERVICES, L.L.C.

Bidder	Cash Payment	Price/ Acre	Rental	Oil	Gas	Other



TRACT 45718 - Portion of Blocks 15, and 22, Main Pass Area, Revised, Plaquemines Parish, Louisiana

All of the lands now or formerly constituting the beds and bottoms of all water bodies of every nature and description as to which title is vested in the State of Louisiana, together with all islands arising therein and other lands formed by accretion or by reliction, where allowed by law, excepting tax adjudicated lands, and not presently under mineral lease on January 10, 2024, situated in Plaquemines Parish, Louisiana, and more particularly described as follows: Beginning at a point on the West line of Block 15, Main Pass Area, Revised, having Coordinates of X = 2,605,850.00 and Y = 344,455.00; thence East 7,375.00 feet to a point within said Block 15 having Coordinates of X = 2,613,225.00 and Y = 344,455.00; thence South 14,750.00 feet to a point within Block 22, Main Pass Area, Revised, having Coordinates of X = 2,613,225.00 and Y = 329,705.00; thence West 7,375.00 feet to a point on the West line of said Block 22 having Coordinates of X = 2,605,850.00 and Y = 329,705.00; thence North 14,750.00 feet on the West line of said Block 22 and said Block 15 to the point of beginning, containing approximately **2,497.27 acres**, all as more particularly outlined on a plat on file in the Office of Mineral Resources, Department of Natural Resources. All bearings, distances and coordinates are based on Louisiana Coordinate System of 1927, (North or South Zone), where applicable.

NOTE: The above description of the Tract nominated for lease has been provided and corrected, where required, exclusively by the nomination party. Any mineral lease selected from this Tract and awarded by the Louisiana State Mineral and Energy Board shall be without warranty of any kind, either express, implied, or statutory, including, but not limited to, the implied warranties of merchantability and fitness for a particular purpose. Should the mineral lease awarded by the Louisiana State Mineral and Energy Board be subsequently modified, cancelled or abrogated due to the existence of conflicting leases, operating agreements, private claims or other future obligations or conditions which may affect all or any portion of the leased Tract, it shall not relieve the Lessee of the obligation to pay any bonus due thereon to the Louisiana State Mineral and Energy Board, nor shall the Louisiana State Mineral and Energy Board be obligated to refund any consideration paid by the Lessor prior to such modification, cancellation, or abrogation, including, but not limited to, bonuses, rentals and royalties.

NOTE: The State of Louisiana does hereby reserve, and this lease shall be subject to, the imprescriptible right of surface use in the nature of a servitude in favor of the Department of Natural Resources, including its Offices and Commissions, for the sole purpose of implementing, constructing, servicing and maintaining approved coastal zone management and/or restoration projects. Utilization of any and all rights derived under this lease by the mineral lessee, its agents, successors or assigns, shall not interfere with nor hinder the reasonable surface use by the Department of Natural Resources, its Offices or Commissions, as herein above reserved.

NOTE: This tract is located in an area designated by the Louisiana Legislature or the Wildlife and Fisheries Commission as a Public Oyster Seed Ground, Reservation, or area of Calcasieu or Sabine Lake. Proposed projects occurring in these areas will be evaluated on a case by case basis by Louisiana Department of Wildlife & Fisheries. Modifications to proposed project features including, but not limited to, access routes, well sites, flowlines, and appurtenant structures maybe required by the Louisiana Department of Wildlife and Fisheries. In addition, compensatory mitigation will be required to offset unavoidable habitat impacts.

Applicant: ALLEN & KIRMSE, LTD.

Bidder	Cash Payment	Price/Acre	Rental	Oil	Gas	Other

Legend
24010016
Blocks



0 2,500 Feet

MAIN PASS AREA, REVISED

PLAQUEMINES

MP0015

GULF OF MEXICO

P.O.B.

MP0014

MP0022

MP0023

Office of Mineral Resources, Acres: 2497.27 Tract Number: 45718

TRACT 45719 - Portion of Blocks 15, and 22, Main Pass Area, Revised, Plaquemines Parish, Louisiana

All of the lands now or formerly constituting the beds and bottoms of all water bodies of every nature and description as to which title is vested in the State of Louisiana, together with all islands arising therein and other lands formed by accretion or by reliction, where allowed by law, excepting tax adjudicated lands, and not presently under mineral lease on January 10, 2024, situated in Plaquemines Parish, Louisiana, and more particularly described as follows: Beginning at a point on the East line of Block 15, Main Pass Area, Revised, having Coordinates of X = 2,620,600.00 and Y = 344,455.00; thence South 14,750.00 feet on the East line of said Block 15 and the East line of Block 22, Main Pass Area, Revised, to a point on the East line of said Block 22, having Coordinates of X = 2,620,600.00 and Y = 329,705.00; thence West 7,375.00 feet to a point within said Block 22 having Coordinates of X = 2,613,225.00 and Y = 329,705.00; thence North 14,750.00 feet to a point within said Block 15 having Coordinates of X = 2,613,225.00 and Y = 344,455.00; thence East 7,375.00 feet to the point of beginning, containing approximately **2,497.27 acres**, all as more particularly outlined on a plat on file in the Office of Mineral Resources, Department of Natural Resources. All bearings, distances and coordinates are based on Louisiana Coordinate System of 1927, (North or South Zone), where applicable.

NOTE: The above description of the Tract nominated for lease has been provided and corrected, where required, exclusively by the nomination party. Any mineral lease selected from this Tract and awarded by the Louisiana State Mineral and Energy Board shall be without warranty of any kind, either express, implied, or statutory, including, but not limited to, the implied warranties of merchantability and fitness for a particular purpose. Should the mineral lease awarded by the Louisiana State Mineral and Energy Board be subsequently modified, cancelled or abrogated due to the existence of conflicting leases, operating agreements, private claims or other future obligations or conditions which may affect all or any portion of the leased Tract, it shall not relieve the Lessee of the obligation to pay any bonus due thereon to the Louisiana State Mineral and Energy Board, nor shall the Louisiana State Mineral and Energy Board be obligated to refund any consideration paid by the Lessor prior to such modification, cancellation, or abrogation, including, but not limited to, bonuses, rentals and royalties.

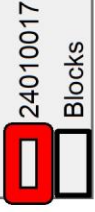
NOTE: The State of Louisiana does hereby reserve, and this lease shall be subject to, the imprescriptible right of surface use in the nature of a servitude in favor of the Department of Natural Resources, including its Offices and Commissions, for the sole purpose of implementing, constructing, servicing and maintaining approved coastal zone management and/or restoration projects. Utilization of any and all rights derived under this lease by the mineral lessee, its agents, successors or assigns, shall not interfere with nor hinder the reasonable surface use by the Department of Natural Resources, its Offices or Commissions, as herein above reserved.

NOTE: This tract is located in an area designated by the Louisiana Legislature or the Wildlife and Fisheries Commission as a Public Oyster Seed Ground, Reservation, or area of Calcasieu or Sabine Lake. Proposed projects occurring in these areas will be evaluated on a case by case basis by Louisiana Department of Wildlife & Fisheries. Modifications to proposed project features including, but not limited to, access routes, well sites, flowlines, and appurtenant structures maybe required by the Louisiana Department of Wildlife and Fisheries. In addition, compensatory mitigation will be required to offset unavoidable habitat impacts.

Applicant: ALLEN & KIRMSE, LTD.

Bidder	Cash Payment	Price/Acre	Rental	Oil	Gas	Other

Legend



MAIN PASS AREA, REVISED

MP00016

P.O.B.

MP00021

PLAQUEMINES

GULF OF MEXICO

MP00015

MP00022

0 2,500 Feet



TRACT 45720 - Portion of Block 32, Breton Sound Area, Plaquemines Parish, Louisiana

All of the lands now or formerly constituting the beds and bottoms of all water bodies of every nature and description as to which title is vested in the State of Louisiana, together with all islands arising therein and other lands formed by accretion or by reliction, where allowed by law, excepting tax adjudicated lands, and not presently under mineral lease on January 10, 2024, situated in Plaquemines Parish, Louisiana, and more particularly described as follows: Beginning at the Northwest corner of Block 32, Breton Sound Area, having Coordinates of X = 2,635,350.00 and Y = 337,080.00; thence East 14,750.00 feet on the North line of said Block 32 to its Northeast corner having Coordinates of X = 2,650,100.00 and Y = 337,080.00; thence South 7,375.00 feet on the East line of said Block 32 to a point having Coordinates of X = 2,650,100.00 and Y = 329,705.00; thence West 3,500.00 feet to a point on the boundary of State Lease No. 1227, as amended, having Coordinates of X = 2,646,600.00 and Y = 329,705.00; thence along the boundary of said State Lease No. 1227 the following courses: North 1,717.00 feet to a point having Coordinates of X = 2,646,600.00 and Y = 331,422.00, Northwesterly on a curve to the left having a radius of 33,940.00 feet a distance of 7,738.63 feet to a point having Coordinates of X = 2,639,350.00 and Y = 334,080.00, and West 4,000.00 feet to its Northwest corner and a point on the West line of said Block 32 having Coordinates of X = 2,635,350.00 and Y = 334,080.00; thence North 3,000.00 feet on the West line of said Block 32 to the point of beginning, containing approximately **1,562.51 acres**, all as more particularly outlined on a plat on file in the Office of Mineral Resources, Department of Natural Resources. All bearings, distances and coordinates are based on Louisiana Coordinate System of 1927, (North or South Zone), where applicable.

NOTE: The above description of the Tract nominated for lease has been provided and corrected, where required, exclusively by the nomination party. Any mineral lease selected from this Tract and awarded by the Louisiana State Mineral and Energy Board shall be without warranty of any kind, either express, implied, or statutory, including, but not limited to, the implied warranties of merchantability and fitness for a particular purpose. Should the mineral lease awarded by the Louisiana State Mineral and Energy Board be subsequently modified, cancelled or abrogated due to the existence of conflicting leases, operating agreements, private claims or other future obligations or conditions which may affect all or any portion of the leased Tract, it shall not relieve the Lessee of the obligation to pay any bonus due thereon to the Louisiana State Mineral and Energy Board, nor shall the Louisiana State Mineral and Energy Board be obligated to refund any consideration paid by the Lessor prior to such modification, cancellation, or abrogation, including, but not limited to, bonuses, rentals and royalties.

NOTE: The State of Louisiana does hereby reserve, and this lease shall be subject to, the imprescriptible right of surface use in the nature of a servitude in favor of the Department of Natural Resources, including its Offices and Commissions, for the sole purpose of implementing, constructing,

servicing and maintaining approved coastal zone management and/or restoration projects. Utilization of any and all rights derived under this lease by the mineral lessee, its agents, successors or assigns, shall not interfere with nor hinder the reasonable surface use by the Department of Natural Resources, its Offices or Commissions, as herein above reserved.

NOTE: This tract is located in an area designated by the Louisiana Legislature or the Wildlife and Fisheries Commission as a Public Oyster Seed Ground, Reservation, or area of Calcasieu or Sabine Lake. Proposed projects occurring in these areas will be evaluated on a case by case basis by Louisiana Department of Wildlife & Fisheries. Modifications to proposed project features including, but not limited to, access routes, well sites, flowlines, and appurtenant structures maybe required by the Louisiana Department of Wildlife and Fisheries. In addition, compensatory mitigation will be required to offset unavoidable habitat impacts.

Applicant: ALLEN & KIRMSE, LTD.

Bidder	Cash Payment	Price/Acre	Rental	Oil	Gas	Other

Legend

- 24010024
- Blocks
- Active_Leases



0 2,500 Feet

Office of Mineral Resources, Acres: 1562.51 Tract Number: 45720

PLAQUEMINES

BRETON SOUND AREA

GULF OF MEXICO

BS0017

P.O.B.

MAIN PASS AREA, REVISED

MP0021

BS0031

SL 4708

SL 1227

BS0032

TRACT 45721 - Portion of Block 31, Breton Sound Area, Plaquemines Parish, Louisiana

All of the lands now or formerly constituting the beds and bottoms of all water bodies of every nature and description as to which title is vested in the State of Louisiana, together with all islands arising therein and other lands formed by accretion or by reliction, where allowed by law, excepting tax adjudicated lands, and not presently under mineral lease on January 10, 2024, situated in Plaquemines Parish, Louisiana, and more particularly described as follows: Beginning at Northwest corner of Block 31, Breton Sound Area, having Coordinates of X = 2,650,100.00 and Y = 337,080.00; thence East 7,375.00 feet on the North line of said Block 31 to a point having Coordinates of X = 2,657,475.00 and Y = 337,080.00; thence South 14,750.00 feet to a point on the South line of said Block 31 having Coordinates of X = 2,657,475.00 and Y = 322,330.00; thence West 7,375.00 feet on the South line of said Block 31 to its Southwest corner having Coordinates of X = 2,650,100.00 and Y = 322,330.00; thence North 14,750.00 feet on the West line of said Block 31 to the point of beginning, containing approximately **2,497.27 acres**, all as more particularly outlined on a plat on file in the Office of Mineral Resources, Department of Natural Resources. All bearings, distances and coordinates are based on Louisiana Coordinate System of 1927, (North or South Zone), where applicable.

NOTE: The above description of the Tract nominated for lease has been provided and corrected, where required, exclusively by the nomination party. Any mineral lease selected from this Tract and awarded by the Louisiana State Mineral and Energy Board shall be without warranty of any kind, either express, implied, or statutory, including, but not limited to, the implied warranties of merchantability and fitness for a particular purpose. Should the mineral lease awarded by the Louisiana State Mineral and Energy Board be subsequently modified, cancelled or abrogated due to the existence of conflicting leases, operating agreements, private claims or other future obligations or conditions which may affect all or any portion of the leased Tract, it shall not relieve the Lessee of the obligation to pay any bonus due thereon to the Louisiana State Mineral and Energy Board, nor shall the Louisiana State Mineral and Energy Board be obligated to refund any consideration paid by the Lessor prior to such modification, cancellation, or abrogation, including, but not limited to, bonuses, rentals and royalties.

NOTE: The State of Louisiana does hereby reserve, and this lease shall be subject to, the imprescriptible right of surface use in the nature of a servitude in favor of the Department of Natural Resources, including its Offices and Commissions, for the sole purpose of implementing, constructing, servicing and maintaining approved coastal zone management and/or restoration projects. Utilization of any and all rights derived under this lease by the mineral lessee, its agents, successors or assigns, shall not interfere with nor hinder the reasonable surface use by the Department of Natural Resources, its Offices or Commissions, as herein above reserved.




NOTE: It appears, according to our records, that a portion of this Tract is located within the restrictive safety fairway area as set out by the Corps of Engineers, U.S. Army and/or the restrictive anchorage area as set out by the U.S. Coast Guard.

NOTE: This tract is located in an area designated by the Louisiana Legislature or the Wildlife and Fisheries Commission as a Public Oyster Seed Ground, Reservation, or area of Calcasieu or Sabine Lake. Proposed projects occurring in these areas will be evaluated on a case by case basis by Louisiana Department of Wildlife & Fisheries. Modifications to proposed project features including, but not limited to, access routes, well sites, flowlines, and appurtenant structures maybe required by the Louisiana Department of Wildlife and Fisheries. In addition, compensatory mitigation will be required to offset unavoidable habitat impacts.

Applicant: ALLEN & KIRMSE, LTD.

Bidder	Cash Payment	Price/Acre	Rental	Oil	Gas	Other

Legend

-  24010027
-  Blocks
-  Active_Leases



0 2,500 Feet

P.O.B.

PLAQUEMINES

GULF OF MEXICO

BRETON SOUND AREA

BS0018

BS0032

BS0031

SL 21543

BS0034

TRACT 45722 - Portion of Block 21, Main Pass Area, Revised, Plaquemines Parish, Louisiana

All of the lands now or formerly constituting the beds and bottoms of all water bodies of every nature and description as to which title is vested in the State of Louisiana, together with all islands arising therein and other lands formed by accretion or by reliction, where allowed by law, excepting tax adjudicated lands, and not presently under mineral lease on January 10, 2024, situated in Plaquemines Parish, Louisiana, and more particularly described as follows: Beginning at the Northwest corner of Block 21, Main Pass Area, Revised, having Coordinates of X = 2,620,600.00 and Y = 337,080.00; thence East 14,750.00 feet on the North line of said Block 21 to its Northeast corner having Coordinates of X = 2,635,350.00 and Y = 337,080.00; thence South 1,900.00 feet on the East line of said Block 21 to the Northeast corner of State Lease No. 4708, as amended, having Coordinates of X = 2,635,350.00 and Y = 335,180.00; thence along the boundary of said State Lease No. 4708 the following courses: South 68 degrees 11 minutes 55 seconds West 2,154.07 feet to a point having Coordinates of X = 2,633,350.00 and Y = 334,380.00, South 63 degrees 26 minutes 06 seconds West 1,118.03 feet to a point having Coordinates of X = 2,632,350.00 and Y = 333,880.00, South 57 degrees 59 minutes 41 seconds West 943.40 feet to a point having Coordinates of X = 2,631,550.00 and Y = 333,380.00, South 45 degrees 00 minutes 00 seconds West 707.11 feet to a point having Coordinates of X = 2,631,049.99 and Y = 332,880.00, South 30 degrees 57 minutes 50 seconds West 583.10 feet to a point having Coordinates of X = 2,630,749.99 and Y = 332,380.00, South 21 degrees 48 minutes 05 seconds West 538.52 feet to a point having Coordinates of X = 2,630,549.99 and Y = 331,879.99, and South 00 degrees 00 minutes 06 seconds East 366.94 feet to the Northeast corner of State Lease No. 15536, as amended, having Coordinates of X = 2,630,550.00 and Y = 331,513.05; thence along the boundary of said State Lease No. 15536 the following courses: West 1,673.00 feet to a point having Coordinates of X = 2,628,877.00 and Y = 331,513.05 and South 1,808.05 feet to a point having Coordinates of X = 2,628,877.00 and Y = 329,705.00; thence West 8,277.00 feet to a point on the West line of said Block 21 having Coordinates of X = 2,620,600.00 and Y = 329,705.00; thence North 7,375.00 feet on the West line of said Block 21 to the point of beginning, containing approximately **1,950.56 acres**, all as more particularly outlined on a plat on file in the Office of Mineral Resources, Department of Natural Resources. All bearings, distances and coordinates are based on Louisiana Coordinate System of 1927, (North or South Zone), where applicable.

NOTE: The above description of the Tract nominated for lease has been provided and corrected, where required, exclusively by the nomination party. Any mineral lease selected from this Tract and awarded by the Louisiana State Mineral and Energy Board shall be without warranty of any kind, either express, implied, or statutory, including, but not limited to, the implied warranties of merchantability and fitness for a particular purpose. Should the mineral lease awarded by the Louisiana State Mineral and Energy Board be subsequently modified, cancelled or abrogated due to the existence of conflicting leases, operating agreements, private claims or other future

obligations or conditions which may affect all or any portion of the leased Tract, it shall not relieve the Lessee of the obligation to pay any bonus due thereon to the Louisiana State Mineral and Energy Board, nor shall the Louisiana State Mineral and Energy Board be obligated to refund any consideration paid by the Lessor prior to such modification, cancellation, or abrogation, including, but not limited to, bonuses, rentals and royalties.




NOTE: The State of Louisiana does hereby reserve, and this lease shall be subject to, the imprescriptible right of surface use in the nature of a servitude in favor of the Department of Natural Resources, including its Offices and Commissions, for the sole purpose of implementing, constructing, servicing and maintaining approved coastal zone management and/or restoration projects. Utilization of any and all rights derived under this lease by the mineral lessee, its agents, successors or assigns, shall not interfere with nor hinder the reasonable surface use by the Department of Natural Resources, its Offices or Commissions, as herein above reserved.

NOTE: This tract is located in an area designated by the Louisiana Legislature or the Wildlife and Fisheries Commission as a Public Oyster Seed Ground, Reservation, or area of Calcasieu or Sabine Lake. Proposed projects occurring in these areas will be evaluated on a case by case basis by Louisiana Department of Wildlife & Fisheries. Modifications to proposed project features including, but not limited to, access routes, well sites, flowlines, and appurtenant structures maybe required by the Louisiana Department of Wildlife and Fisheries. In addition, compensatory mitigation will be required to offset unavoidable habitat impacts.

Applicant: ALLEN & KIRMSE, LTD.

Bidder	Cash Payment	Price/Acre	Rental	Oil	Gas	Other

Legend

-  24010021
-  Blocks
-  Active_Leases



Office of Mineral Resources, Acres: 1950.56 Tract Number: 45722

PLAQUEMINES
MAIN PASS AREA, REVISED

MP0016

GULF OF MEXICO

BS0032

BRETON SOUND AREA

P.O.B.

MP0022

SL 4708

SL 15536

MP0021

TRACT 45723 - Portion of Blocks 22, and 25, Main Pass Area, Revised, Plaquemines Parish, Louisiana

All of the lands now or formerly constituting the beds and bottoms of all water bodies of every nature and description as to which title is vested in the State of Louisiana, together with all islands arising therein and other lands formed by accretion or by reliction, where allowed by law, excepting tax adjudicated lands, and not presently under mineral lease on January 10, 2024, situated in Plaquemines Parish, Louisiana, and more particularly described as follows: Beginning at a point on the West line of Block 22, Main Pass Area, Revised, having Coordinates of X = 2,605,850.00 and Y = 329,705.00; thence East 7,375.00 feet to a point having Coordinates of X = 2,613,225.00 and Y = 329,705.00; thence South 8,377.60 feet to a point within Block 25, Main Pass Area, Revised, also being a point on the boundary of State Lease No. 16432 having Coordinates of X = 2,613,225.00 and Y = 321,327.40; thence along the boundary of said State Lease No. 16432 the following courses: North 53 degrees 54 minutes 06 seconds West 1,701.72 feet to a point having Coordinates of X = 2,611,850.00 and Y = 322,330.00, West 3,800.00 feet to a point having Coordinates of X = 2,608,050.00 and Y = 322,330.00, and South 28 degrees 28 minutes 27 seconds East 7,508.26 feet to a point having Coordinates of X = 2,611,629.66 and Y = 315,730.00; thence West 5,779.66 feet to a point on the West line of said Block 25 having Coordinates of X = 2,605,850.00 and Y = 315,730.00; thence North 13,975.00 feet on the West line of said Block 25 and said Block 22 to the point of beginning, containing approximately **1,868.98 acres**, all as more particularly outlined on a plat on file in the Office of Mineral Resources, Department of Natural Resources. All bearings, distances and coordinates are based on Louisiana Coordinate System of 1927, (North or South Zone), where applicable.

NOTE: The above description of the Tract nominated for lease has been provided and corrected, where required, exclusively by the nomination party. Any mineral lease selected from this Tract and awarded by the Louisiana State Mineral and Energy Board shall be without warranty of any kind, either express, implied, or statutory, including, but not limited to, the implied warranties of merchantability and fitness for a particular purpose. Should the mineral lease awarded by the Louisiana State Mineral and Energy Board be subsequently modified, cancelled or abrogated due to the existence of conflicting leases, operating agreements, private claims or other future obligations or conditions which may affect all or any portion of the leased Tract, it shall not relieve the Lessee of the obligation to pay any bonus due thereon to the Louisiana State Mineral and Energy Board, nor shall the Louisiana State Mineral and Energy Board be obligated to refund any consideration paid by the Lessor prior to such modification, cancellation, or abrogation, including, but not limited to, bonuses, rentals and royalties.

NOTE: The State of Louisiana does hereby reserve, and this lease shall be subject to, the imprescriptible right of surface use in the nature of a servitude in favor of the Department of Natural Resources, including its Offices and Commissions, for the sole purpose of implementing, constructing, servicing and maintaining approved coastal zone management and/or

restoration projects. Utilization of any and all rights derived under this lease by the mineral lessee, its agents, successors or assigns, shall not interfere with nor hinder the reasonable surface use by the Department of Natural Resources, its Offices or Commissions, as herein above reserved.

NOTE: This tract is located in an area designated by the Louisiana Legislature or the Wildlife and Fisheries Commission as a Public Oyster Seed Ground, Reservation, or area of Calcasieu or Sabine Lake. Proposed projects occurring in these areas will be evaluated on a case by case basis by Louisiana Department of Wildlife & Fisheries. Modifications to proposed project features including, but not limited to, access routes, well sites, flowlines, and appurtenant structures maybe required by the Louisiana Department of Wildlife and Fisheries. In addition, compensatory mitigation will be required to offset unavoidable habitat impacts.

Applicant: ALLEN & KIRMSE, LTD.

Bidder	Cash Payment	Price/Acre	Rental	Oil	Gas	Other

Legend

- 24010018
- Blocks
- Active_Leases

MAIN PASS AREA, REVISED

MP0022

PLAQUEMINES

GULF OF MEXICO

MP0025

SL 16432

P.O.B.

MP0023

MP0024

0 2,500 Feet



Office of Mineral Resources, Acres: 1868.98 Tract Number: 45723

TRACT 45724 - Portion of Blocks 22, and 25, Main Pass Area, Revised, Plaquemines Parish, Louisiana

All of the lands now or formerly constituting the beds and bottoms of all water bodies of every nature and description as to which title is vested in the State of Louisiana, together with all islands arising therein and other lands formed by accretion or by reliction, where allowed by law, excepting tax adjudicated lands, and not presently under mineral lease on January 10, 2024, situated in Plaquemines Parish, Louisiana, and more particularly described as follows: Beginning at a point on the East line of Block 22, Main Pass Area, Revised, having Coordinates of X = 2,620,600.00 and Y = 329,705.00; thence South 13,975.00 feet on the East line of said Block 22 and the East line of Block 25, Main Pass Area, Revised, to a point having Coordinates of X = 2,620,600.00 and Y = 315,730.00; thence West 4,678.34 feet to a point on the boundary of State Lease No. 16432 having Coordinates of X = 2,615,921.66 and Y = 315,730.00; thence along the boundary of said State Lease No. 16432 the following courses: North 40 degrees 54 minutes 52 seconds East 2,944.33 feet to a point having Coordinates of X = 2,617,850.00 and Y = 317,955.00 and North 53 degrees 54 minutes 06 seconds West 5,723.96 feet to a point having Coordinates of X = 2,613,225.00 and Y = 321,327.40; thence North 8,377.60 feet to a point within said Block 22 having Coordinates of X = 2,613,225.00 and Y = 329,705.00; thence East 7,375.00 feet to the point of beginning, containing approximately **2,000.04 acres**, all as more particularly outlined on a plat on file in the Office of Mineral Resources, Department of Natural Resources. All bearings, distances and coordinates are based on Louisiana Coordinate System of 1927, (North or South Zone), where applicable.

NOTE: The above description of the Tract nominated for lease has been provided and corrected, where required, exclusively by the nomination party. Any mineral lease selected from this Tract and awarded by the Louisiana State Mineral and Energy Board shall be without warranty of any kind, either express, implied, or statutory, including, but not limited to, the implied warranties of merchantability and fitness for a particular purpose. Should the mineral lease awarded by the Louisiana State Mineral and Energy Board be subsequently modified, cancelled or abrogated due to the existence of conflicting leases, operating agreements, private claims or other future obligations or conditions which may affect all or any portion of the leased Tract, it shall not relieve the Lessee of the obligation to pay any bonus due thereon to the Louisiana State Mineral and Energy Board, nor shall the Louisiana State Mineral and Energy Board be obligated to refund any consideration paid by the Lessor prior to such modification, cancellation, or abrogation, including, but not limited to, bonuses, rentals and royalties.

NOTE: The State of Louisiana does hereby reserve, and this lease shall be subject to, the imprescriptible right of surface use in the nature of a servitude in favor of the Department of Natural Resources, including its Offices and Commissions, for the sole purpose of implementing, constructing, servicing and maintaining approved coastal zone management and/or restoration projects. Utilization of any and all rights derived under this

lease by the mineral lessee, its agents, successors or assigns, shall not interfere with nor hinder the reasonable surface use by the Department of Natural Resources, its Offices or Commissions, as herein above reserved.

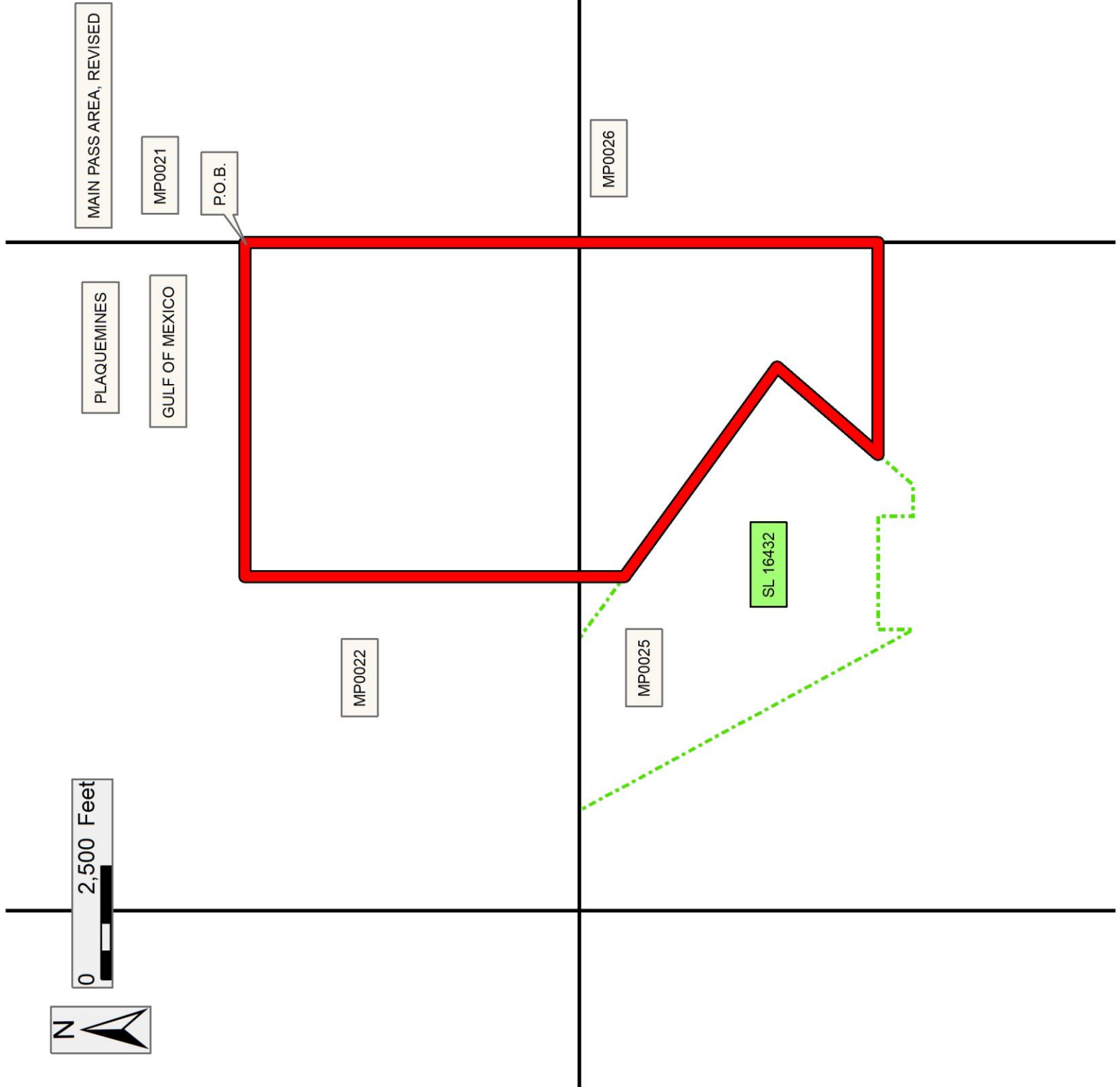
NOTE: This tract is located in an area designated by the Louisiana Legislature or the Wildlife and Fisheries Commission as a Public Oyster Seed Ground, Reservation, or area of Calcasieu or Sabine Lake. Proposed projects occurring in these areas will be evaluated on a case by case basis by Louisiana Department of Wildlife & Fisheries. Modifications to proposed project features including, but not limited to, access routes, well sites, flowlines, and appurtenant structures maybe required by the Louisiana Department of Wildlife and Fisheries. In addition, compensatory mitigation will be required to offset unavoidable habitat impacts.

Applicant: ALLEN & KIRMSE, LTD.

Bidder	Cash Payment	Price/Acre	Rental	Oil	Gas	Other

Legend

- 24010019
- Blocks
- Active_Leases



TRACT 45725 - Portion of Block 21, Main Pass Area, Revised, Plaquemines Parish, Louisiana

All of the lands now or formerly constituting the beds and bottoms of all water bodies of every nature and description as to which title is vested in the State of Louisiana, together with all islands arising therein and other lands formed by accretion or by reliction, where allowed by law, excepting tax adjudicated lands, and not presently under mineral lease on January 10, 2024, situated in Plaquemines Parish, Louisiana, and more particularly described as follows: Beginning at the Southwest corner of Block 21, Main Pass Area, Revised, having Coordinates of X = 2,620,600.00 and Y = 322,330.00; thence North 7,375.00 feet on the West line of said Block 21 to a point having Coordinates of X = 2,620,600.00 and Y = 329,705.00; thence East 8,277.00 feet to a point on the boundary of State Lease No. 15536, as amended, having Coordinates of X = 2,628,877.00 and Y = 329,705.00; thence along the boundary of said State Lease No. 15536 the following courses: South 2,027.00 feet to a point having Coordinates of X = 2,628,877.00 and Y = 327,678.00, East 3,591.00 feet to a point having Coordinates of X = 2,632,468.00 and Y = 327,678.00, and North 13 degrees 38 minutes 58 seconds West 2,188.40 feet to a point on the boundary of State Lease No. 4708, as amended, having Coordinates of X = 2,631,951.58 and Y = 329,804.60; thence along the boundary of said State Lease No. 4708 the following courses: South 75 degrees 57 minutes 51 seconds East 513.74 feet to a point having Coordinates of X = 2,632,449.98 and Y = 329,680.00, East 500.00 feet to a point having Coordinates of X = 2,632,949.98 and Y = 329,680.00, and North 85 degrees 14 minutes 11 seconds East 2,408.32 feet to its Southeast corner and a point on the East line of said Block 21, having Coordinates of X = 2,635,349.98 and Y = 329,880.00; thence South 7,550.00 feet on the East line of said Block 21 to its Southeast corner having Coordinates of X = 2,635,350.00 and Y = 322,330.00; thence West 14,750.00 feet on the South line of said Block 21 to the point of beginning, containing approximately **2,345.87 acres**, all as more particularly outlined on a plat on file in the Office of Mineral Resources, Department of Natural Resources. All bearings, distances and coordinates are based on Louisiana Coordinate System of 1927, (North or South Zone), where applicable.

NOTE: The above description of the Tract nominated for lease has been provided and corrected, where required, exclusively by the nomination party. Any mineral lease selected from this Tract and awarded by the Louisiana State Mineral and Energy Board shall be without warranty of any kind, either express, implied, or statutory, including, but not limited to, the implied warranties of merchantability and fitness for a particular purpose. Should the mineral lease awarded by the Louisiana State Mineral and Energy Board be subsequently modified, cancelled or abrogated due to the existence of conflicting leases, operating agreements, private claims or other future obligations or conditions which may affect all or any portion of the leased Tract, it shall not relieve the Lessee of the obligation to pay any bonus due thereon to the Louisiana State Mineral and Energy Board, nor shall the Louisiana State Mineral and Energy Board be obligated to refund any

consideration paid by the Lessor prior to such modification, cancellation, or abrogation, including, but not limited to, bonuses, rentals and royalties.

NOTE: The State of Louisiana does hereby reserve, and this lease shall be subject to, the imprescriptible right of surface use in the nature of a servitude in favor of the Department of Natural Resources, including its Offices and Commissions, for the sole purpose of implementing, constructing, servicing and maintaining approved coastal zone management and/or restoration projects. Utilization of any and all rights derived under this lease by the mineral lessee, its agents, successors or assigns, shall not interfere with nor hinder the reasonable surface use by the Department of Natural Resources, its Offices or Commissions, as herein above reserved.

NOTE: This tract is located in an area designated by the Louisiana Legislature or the Wildlife and Fisheries Commission as a Public Oyster Seed Ground, Reservation, or area of Calcasieu or Sabine Lake. Proposed projects occurring in these areas will be evaluated on a case by case basis by Louisiana Department of Wildlife & Fisheries. Modifications to proposed project features including, but not limited to, access routes, well sites, flowlines, and appurtenant structures maybe required by the Louisiana Department of Wildlife and Fisheries. In addition, compensatory mitigation will be required to offset unavoidable habitat impacts.

Applicant: ALLEN & KIRMSE, LTD.

Bidder	Cash Payment	Price/Acre	Rental	Oil	Gas	Other

Legend

- 24010022
- Blocks
- Active_Leases

