

TRACT 42023 - Avoyelles Parish, Louisiana

All of the lands now or formerly constituting the beds and bottoms of all water bodies of every nature and description as to which title is vested in the State of Louisiana, together with all islands arising therein and other lands formed by accretion or by reliction, where allowed by law, excepting tax adjudicated lands, and not presently under mineral lease on April 13, 2011, situated in Avoyelles Parish, Louisiana, and more particularly described as follows: Beginning at a point on having Coordinates of X = 1,770,160.27 and Y = 871,172.81; thence East 18,480.00 feet to a point having Coordinates of X = 1,788,640.27 and Y = 871,172.81; thence South 18,480.00 feet to a point having Coordinates of X = 1,788,640.27 and Y = 852,692.81; thence West 18,480.00 feet to a point having Coordinates of X = 1,770,160.27 and Y = 852,692.81; thence North 18,480.00 feet to the point of beginning, (This lease includes only waterbottoms claimed and owned by the state and specifically excludes any land which the state may claim or own and to which the mineral rights are vested in the state), containing approximately **46 acres**, all as more particularly outlined on a plat on file in the Office of Mineral Resources, Department of Natural Resources. All bearings, distances and coordinates are based on Louisiana Coordinate System of 1927, (North or South Zone), where applicable.

NOTE: The above description of the Tract nominated for lease has been provided and corrected, where required, exclusively by the nomination party. Any mineral lease selected from this Tract and awarded by the Louisiana State Mineral and Energy Board shall be without warranty of any kind, either express, implied, or statutory, including, but not limited to, the implied warranties of merchantability and fitness for a particular purpose. Should the mineral lease awarded by the Louisiana State Mineral and Energy Board be subsequently modified, cancelled or abrogated due to the existence of conflicting leases, operating agreements, private claims or other future obligations or conditions which may affect all or any portion of the leased Tract, it shall not relieve the Lessee of the obligation to pay any bonus due thereon to the Louisiana State Mineral and Energy Board, nor shall the Louisiana State Mineral and Energy Board be obligated to refund any consideration paid by the Lessor prior to such modification, cancellation, or abrogation, including, but not limited to, bonuses, rentals and royalties.

Bidder	Cash Payment	Price/ Acre	Rental	Oil	Gas	Other

Applicant: LESLIE M. COOPER



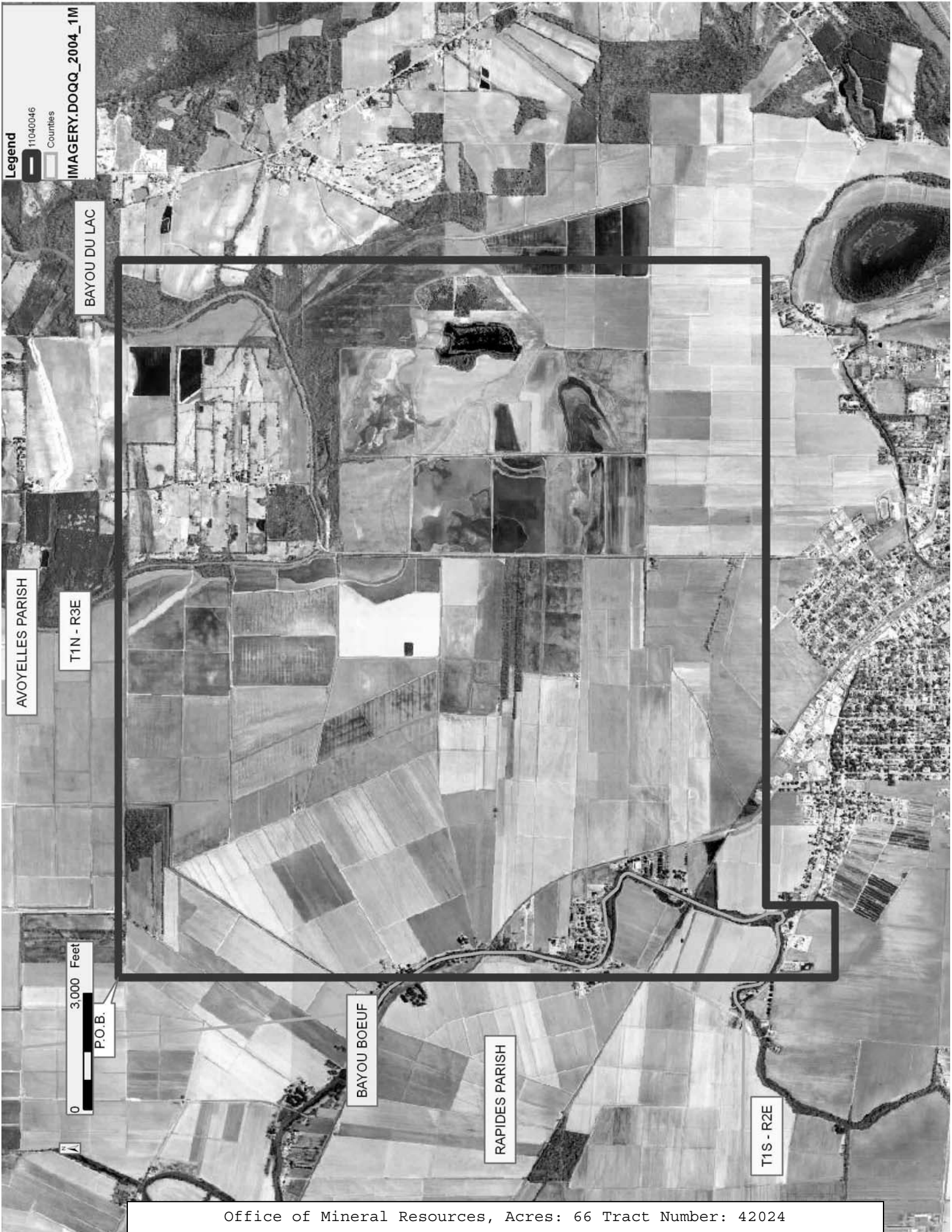
TRACT 42024 - Avoyelles and Rapides Parishes, Louisiana

All of the lands now or formerly constituting the beds and bottoms of all water bodies of every nature and description as to which title is vested in the State of Louisiana, together with all islands arising therein and other lands formed by accretion or by reliction, where allowed by law, excepting tax adjudicated lands, and not presently under mineral lease on April 13, 2011, situated in Avoyelles and Rapides Parishes, Louisiana, and more particularly described as follows: Beginning at a point on having Coordinates of X = 1,724,170.17 and Y = 852,964.26; thence East 18,480.00 feet to a point having Coordinates of X = 1,742,650.17 and Y = 852,964.26; thence South 16,708.65 feet to a point having Coordinates of X = 1,742,650.17 and Y = 836,255.61; thence West 16,618.10 feet to a point having Coordinates of X = 1,726,032.16 and Y = 836,255.61; thence South 1,771.35 feet to a point having Coordinates of X = 1,726,032.16 and Y = 834,484.26; thence West 1,862.00 feet to a point having Coordinates of X = 1,724,170.17 and Y = 834,484.26; thence North 18,480.00 feet to the point of beginning, containing approximately **66 acres**, all as more particularly outlined on a plat on file in the Office of Mineral Resources, Department of Natural Resources. All bearings, distances and coordinates are based on Louisiana Coordinate System of 1927, (North or South Zone), where applicable.

NOTE: The above description of the Tract nominated for lease has been provided and corrected, where required, exclusively by the nomination party. Any mineral lease selected from this Tract and awarded by the Louisiana State Mineral and Energy Board shall be without warranty of any kind, either express, implied, or statutory, including, but not limited to, the implied warranties of merchantability and fitness for a particular purpose. Should the mineral lease awarded by the Louisiana State Mineral and Energy Board be subsequently modified, cancelled or abrogated due to the existence of conflicting leases, operating agreements, private claims or other future obligations or conditions which may affect all or any portion of the leased Tract, it shall not relieve the Lessee of the obligation to pay any bonus due thereon to the Louisiana State Mineral and Energy Board, nor shall the Louisiana State Mineral and Energy Board be obligated to refund any consideration paid by the Lessor prior to such modification, cancellation, or abrogation, including, but not limited to, bonuses, rentals and royalties.

Applicant: LESLIE M. COOPER

Bidder	Cash Payment	Price/ Acre	Rental	Oil	Gas	Other



TRACT 42025 - Avoyelles Parish, Louisiana

All of the lands now or formerly constituting the beds and bottoms of all water bodies of every nature and description as to which title is vested in the State of Louisiana, together with all islands arising therein and other lands formed by accretion or by reliction, where allowed by law, excepting tax adjudicated lands, and not presently under mineral lease on April 13, 2011, situated in Avoyelles Parish, Louisiana, and more particularly described as follows: Beginning at a point on having Coordinates of X = 1,750,680.27 and Y = 852,692.81; thence East 18,480.00 feet to a point having Coordinates of X = 1,769,160.27 and Y = 852,692.81; thence South 18,480.00 feet to a point having Coordinates of X = 1,769,160.27 and Y = 834,212.81; thence West 6,168.10 feet to a point having Coordinates of X = 1,762,992.16 and Y = 834,212.81; thence North 2,042.80 feet to a point having Coordinates of X = 1,762,992.16 and Y = 836,255.61; thence West 12,311.90 feet to a point having Coordinates of X = 1,750,680.27 and Y = 836,255.61; thence North 16,437.20 feet to the point of beginning, containing approximately **131 acres**, all as more particularly outlined on a plat on file in the Office of Mineral Resources, Department of Natural Resources. All bearings, distances and coordinates are based on Louisiana Coordinate System of 1927, (North or South Zone), where applicable.

NOTE: The above description of the Tract nominated for lease has been provided and corrected, where required, exclusively by the nomination party. Any mineral lease selected from this Tract and awarded by the Louisiana State Mineral and Energy Board shall be without warranty of any kind, either express, implied, or statutory, including, but not limited to, the implied warranties of merchantability and fitness for a particular purpose. Should the mineral lease awarded by the Louisiana State Mineral and Energy Board be subsequently modified, cancelled or abrogated due to the existence of conflicting leases, operating agreements, private claims or other future obligations or conditions which may affect all or any portion of the leased Tract, it shall not relieve the Lessee of the obligation to pay any bonus due thereon to the Louisiana State Mineral and Energy Board, nor shall the Louisiana State Mineral and Energy Board be obligated to refund any consideration paid by the Lessor prior to such modification, cancellation, or abrogation, including, but not limited to, bonuses, rentals and royalties.

Applicant: LESLIE M. COOPER

Bidder	Cash Payment	Price/ Acre	Rental	Oil	Gas	Other

AVOYELLES PARISH
T1N - R4E

BAYOU ROUGE

T1S - R4E



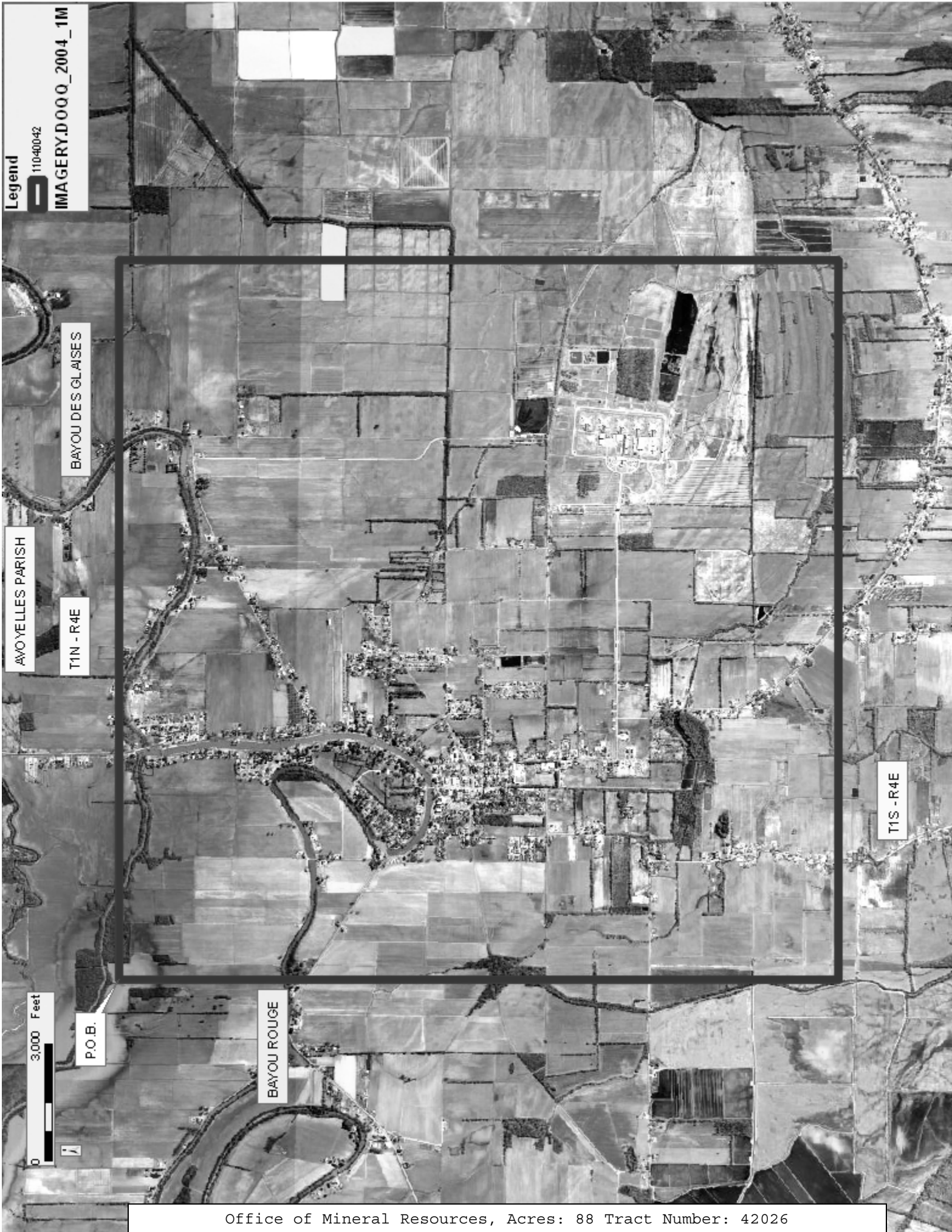
TRACT 42026 - Avoyelles Parish, Louisiana

All of the lands now or formerly constituting the beds and bottoms of all water bodies of every nature and description as to which title is vested in the State of Louisiana, together with all islands arising therein and other lands formed by accretion or by reliction, where allowed by law, excepting tax adjudicated lands, and not presently under mineral lease on April 13, 2011, situated in Avoyelles Parish, Louisiana, and more particularly described as follows: Beginning at a point on having Coordinates of X = 1,769,160.27 and Y = 852,692.81; thence East 18,480.00 feet to a point having Coordinates of X = 1,787,640.27 and Y = 852,692.81; thence South 18,480.00 feet to a point having Coordinates of X = 1,787,640.27 and Y = 834,212.81; thence West 18,480.00 feet to a point having Coordinates of X = 1,769,160.27 and Y = 834,212.81; thence North 18,480.00 feet to the point of beginning, (This lease includes only waterbottoms claimed and owned by the state and specifically excludes any land which the state may claim or own and to which the mineral rights are vested in the state), containing approximately **88 acres**, all as more particularly outlined on a plat on file in the Office of Mineral Resources, Department of Natural Resources. All bearings, distances and coordinates are based on Louisiana Coordinate System of 1927, (North or South Zone), where applicable.

NOTE: The above description of the Tract nominated for lease has been provided and corrected, where required, exclusively by the nomination party. Any mineral lease selected from this Tract and awarded by the Louisiana State Mineral and Energy Board shall be without warranty of any kind, either express, implied, or statutory, including, but not limited to, the implied warranties of merchantability and fitness for a particular purpose. Should the mineral lease awarded by the Louisiana State Mineral and Energy Board be subsequently modified, cancelled or abrogated due to the existence of conflicting leases, operating agreements, private claims or other future obligations or conditions which may affect all or any portion of the leased Tract, it shall not relieve the Lessee of the obligation to pay any bonus due thereon to the Louisiana State Mineral and Energy Board, nor shall the Louisiana State Mineral and Energy Board be obligated to refund any consideration paid by the Lessor prior to such modification, cancellation, or abrogation, including, but not limited to, bonuses, rentals and royalties.

Applicant: LESLIE M. COOPER

Bidder	Cash Payment	Price/ Acre	Rental	Oil	Gas	Other



TRACT 42027 - Avoyelles Parish, Louisiana

All of the lands now or formerly constituting the beds and bottoms of all water bodies of every nature and description as to which title is vested in the State of Louisiana, together with all islands arising therein and other lands formed by accretion or by reliction, where allowed by law, excepting tax adjudicated lands, and not presently under mineral lease on April 13, 2011, situated in Avoyelles Parish, Louisiana, and more particularly described as follows: Beginning at a point on having Coordinates of X = 1,833,245.15 and Y = 851,316.41; thence East 18,480.00 feet to a point having Coordinates of X = 1,851,725.15 and Y = 851,316.41; thence South 8,480.00 feet to a point having Coordinates of X = 1,851,725.15 and Y = 842,836.41; thence West 18,480.00 feet to a point having Coordinates of X = 1,833,245.15 and Y = 842,836.41; thence North 8,480.00 feet to the point of beginning, estimated to contain **41 acres**, all as more particularly outlined on a plat on file in the Office of Mineral Resources, Department of Natural Resources. All bearings, distances and coordinates are based on Louisiana Coordinate System of 1927, (North or South Zone), where applicable.

NOTE: The above description of the Tract nominated for lease has been provided and corrected, where required, exclusively by the nomination party. Any mineral lease selected from this Tract and awarded by the Louisiana State Mineral and Energy Board shall be without warranty of any kind, either express, implied, or statutory, including, but not limited to, the implied warranties of merchantability and fitness for a particular purpose. Should the mineral lease awarded by the Louisiana State Mineral and Energy Board be subsequently modified, cancelled or abrogated due to the existence of conflicting leases, operating agreements, private claims or other future obligations or conditions which may affect all or any portion of the leased Tract, it shall not relieve the Lessee of the obligation to pay any bonus due thereon to the Louisiana State Mineral and Energy Board, nor shall the Louisiana State Mineral and Energy Board be obligated to refund any consideration paid by the Lessor prior to such modification, cancellation, or abrogation, including, but not limited to, bonuses, rentals and royalties.

Applicant: LESLIE M. COOPER

Bidder	Cash Payment	Price/ Acre	Rental	Oil	Gas	Other



TRACT 42028 - Avoyelles Parish, Louisiana

All of the lands now or formerly constituting the beds and bottoms of all water bodies of every nature and description as to which title is vested in the State of Louisiana, together with all islands arising therein and other lands formed by accretion or by reliction, where allowed by law, excepting tax adjudicated lands, and not presently under mineral lease on April 13, 2011, situated in Avoyelles Parish, Louisiana, and more particularly described as follows: Beginning at a point on having Coordinates of X = 1,820,665.15 and Y = 851,316.41; thence East 12,580.00 feet to a point having Coordinates of X = 1,833,245.15 and Y = 851,316.41; thence South 8,480.00 feet to a point having Coordinates of X = 1,833,245.15 and Y = 842,836.41; thence West 12,580.00 feet to a point having Coordinates of X = 1,820,665.15 and Y = 842,836.41; thence North 8,480.00 feet to the point of beginning, estimated to contain **16 acres**, all as more particularly outlined on a plat on file in the Office of Mineral Resources, Department of Natural Resources. All bearings, distances and coordinates are based on Louisiana Coordinate System of 1927, (North or South Zone), where applicable.

NOTE: The above description of the Tract nominated for lease has been provided and corrected, where required, exclusively by the nomination party. Any mineral lease selected from this Tract and awarded by the Louisiana State Mineral and Energy Board shall be without warranty of any kind, either express, implied, or statutory, including, but not limited to, the implied warranties of merchantability and fitness for a particular purpose. Should the mineral lease awarded by the Louisiana State Mineral and Energy Board be subsequently modified, cancelled or abrogated due to the existence of conflicting leases, operating agreements, private claims or other future obligations or conditions which may affect all or any portion of the leased Tract, it shall not relieve the Lessee of the obligation to pay any bonus due thereon to the Louisiana State Mineral and Energy Board, nor shall the Louisiana State Mineral and Energy Board be obligated to refund any consideration paid by the Lessor prior to such modification, cancellation, or abrogation, including, but not limited to, bonuses, rentals and royalties.

Applicant: LESLIE M. COOPER

Bidder	Cash Payment	Price/ Acre	Rental	Oil	Gas	Other

Legend

11040037

IMAGERY.DOQQ_2004_1M

AVOYELLES PARISH

T1N - R6E

BAYOU DES GLAISES

T1S - R6E

P.O.B.

0 2,000 Feet

TRACT 42029 - Avoyelles and Pointe Coupee Parishes, Louisiana

All of the lands now or formerly constituting the beds and bottoms of all water bodies of every nature and description as to which title is vested in the State of Louisiana, together with all islands arising therein and other lands formed by accretion or by reliction, where allowed by law, excepting tax adjudicated lands, and not presently under mineral lease on April 13, 2011, situated in Avoyelles and Pointe Coupee Parishes, Louisiana, and more particularly described as follows: Beginning at a point on having Coordinates of X = 1,851,725.15 and Y = 848,799.56; thence East 15,325.44 feet to a point having Coordinates of X = 1,867,050.59 and Y = 848,799.56; thence South 50 degrees 09 minutes 31 seconds West 15,857.57 feet to a point having Coordinates of X = 1,854,874.83 and Y = 838,640.16; thence West 4,049.03 feet to a point having Coordinates of X = 1,850,825.79 and Y = 838,640.16; thence North 4,196.25 feet to a point having Coordinates of X = 1,850,825.79 and Y = 842,836.41; thence East 899.36 feet to a point having Coordinates of X = 1,851,725.15 and Y = 842,836.41; thence North 5,963.15 feet to the point of beginning, estimated to contain **520 acres**, all as more particularly outlined on a plat on file in the Office of Mineral Resources, Department of Natural Resources. All bearings, distances and coordinates are based on Louisiana Coordinate System of 1927, (North or South Zone), where applicable.

NOTE: The above description of the Tract nominated for lease has been provided and corrected, where required, exclusively by the nomination party. Any mineral lease selected from this Tract and awarded by the Louisiana State Mineral and Energy Board shall be without warranty of any kind, either express, implied, or statutory, including, but not limited to, the implied warranties of merchantability and fitness for a particular purpose. Should the mineral lease awarded by the Louisiana State Mineral and Energy Board be subsequently modified, cancelled or abrogated due to the existence of conflicting leases, operating agreements, private claims or other future obligations or conditions which may affect all or any portion of the leased Tract, it shall not relieve the Lessee of the obligation to pay any bonus due thereon to the Louisiana State Mineral and Energy Board, nor shall the Louisiana State Mineral and Energy Board be obligated to refund any consideration paid by the Lessor prior to such modification, cancellation, or abrogation, including, but not limited to, bonuses, rentals and royalties.

Applicant: LESLIE M. COOPER

Bidder	Cash Payment	Price/ Acre	Rental	Oil	Gas	Other

Legend
11040051
Counties
IMAGERY.DOQQ_2008_1M_CIR



TRACT 42030 - Avoyelles Parish, Louisiana

All of the lands now or formerly constituting the beds and bottoms of all water bodies of every nature and description as to which title is vested in the State of Louisiana, together with all islands arising therein and other lands formed by accretion or by reliction, where allowed by law, excepting tax adjudicated lands, and not presently under mineral lease on April 13, 2011, situated in Avoyelles Parish, Louisiana, and more particularly described as follows: Beginning at a point on having Coordinates of X = 1,832,345.79 and Y = 842,836.41; thence East 18,480.00 feet to a point having Coordinates of X = 1,850,825.79 and Y = 842,836.41; thence South 18,480.00 feet to a point having Coordinates of X = 1,850,825.79 and Y = 824,356.41; thence West 18,480.00 feet to a point having Coordinates of X = 1,832,345.79 and Y = 824,356.41; thence North 18,480.00 feet to the point of beginning, estimated to contain **32 acres**, all as more particularly outlined on a plat on file in the Office of Mineral Resources, Department of Natural Resources. All bearings, distances and coordinates are based on Louisiana Coordinate System of 1927, (North or South Zone), where applicable.

NOTE: The above description of the Tract nominated for lease has been provided and corrected, where required, exclusively by the nomination party. Any mineral lease selected from this Tract and awarded by the Louisiana State Mineral and Energy Board shall be without warranty of any kind, either express, implied, or statutory, including, but not limited to, the implied warranties of merchantability and fitness for a particular purpose. Should the mineral lease awarded by the Louisiana State Mineral and Energy Board be subsequently modified, cancelled or abrogated due to the existence of conflicting leases, operating agreements, private claims or other future obligations or conditions which may affect all or any portion of the leased Tract, it shall not relieve the Lessee of the obligation to pay any bonus due thereon to the Louisiana State Mineral and Energy Board, nor shall the Louisiana State Mineral and Energy Board be obligated to refund any consideration paid by the Lessor prior to such modification, cancellation, or abrogation, including, but not limited to, bonuses, rentals and royalties.

Applicant: LESLIE M. COOPER

Bidder	Cash Payment	Price/ Acre	Rental	Oil	Gas	Other

Legend

11/04/03

MA GRY:DOQQ_2008_1M_CIR

AVOYELLES PARISH

YELLOW BAYOU

0 3,000 Feet

P.O.B.

TIS - RGE

TRACT 42031 - Avoyelles and Pointe Coupee Parishes, Louisiana

All of the lands now or formerly constituting the beds and bottoms of all water bodies of every nature and description as to which title is vested in the State of Louisiana, together with all islands arising therein and other lands formed by accretion or by reliction, where allowed by law, excepting tax adjudicated lands, and not presently under mineral lease on April 13, 2011, situated in Avoyelles and Pointe Coupee Parishes, Louisiana, and more particularly described as follows: Beginning at a point on having Coordinates of X = 1,850,825.79 and Y = 838,640.16; thence East 4,049.03 feet to a point having Coordinates of X = 1,854,874.83 and Y = 838,640.16; thence South 11,628.91 feet to a point having Coordinates of X = 1,854,874.83 and Y = 827,011.25; thence West 4,049.03 feet to a point having Coordinates of X = 1,850,825.79 and Y = 827,011.25; thence North 11,628.91 feet to the point of beginning, estimated to contain **455 acres**, all as more particularly outlined on a plat on file in the Office of Mineral Resources, Department of Natural Resources. All bearings, distances and coordinates are based on Louisiana Coordinate System of 1927, (North or South Zone), where applicable.

NOTE: The above description of the Tract nominated for lease has been provided and corrected, where required, exclusively by the nomination party. Any mineral lease selected from this Tract and awarded by the Louisiana State Mineral and Energy Board shall be without warranty of any kind, either express, implied, or statutory, including, but not limited to, the implied warranties of merchantability and fitness for a particular purpose. Should the mineral lease awarded by the Louisiana State Mineral and Energy Board be subsequently modified, cancelled or abrogated due to the existence of conflicting leases, operating agreements, private claims or other future obligations or conditions which may affect all or any portion of the leased Tract, it shall not relieve the Lessee of the obligation to pay any bonus due thereon to the Louisiana State Mineral and Energy Board, nor shall the Louisiana State Mineral and Energy Board be obligated to refund any consideration paid by the Lessor prior to such modification, cancellation, or abrogation, including, but not limited to, bonuses, rentals and royalties.

Applicant: LESLIE M. COOPER

Bidder	Cash Payment	Price/ Acre	Rental	Oil	Gas	Other

Legend
11040052
Counties
IMAGERY.DOQQ_2008_1M_CIR

POINTE COUPEE PARISH

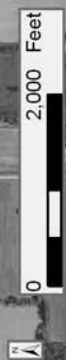
T1S - R7E

ATCHAFALAYA RIVER

P.O.B.

AVOYELLES PARISH

T1S - R6E



TRACT 42032 - Avoyelles Parish, Louisiana

All of the lands now or formerly constituting the beds and bottoms of all water bodies of every nature and description as to which title is vested in the State of Louisiana, together with all islands arising therein and other lands formed by accretion or by reliction, where allowed by law, excepting tax adjudicated lands, and not presently under mineral lease on April 13, 2011, situated in Avoyelles Parish, Louisiana, and more particularly described as follows: Beginning at a point on having Coordinates of X = 1,726,032.16 and Y = 836,255.61; thence East 18,480.00 feet to a point having Coordinates of X = 1,744,512.16 and Y = 836,255.61; thence South 11,027.39 feet to a point having Coordinates of X = 1,744,512.16 and Y = 825,228.22; thence West 18,480.00 feet to a point having Coordinates of X = 1,726,032.16 and Y = 825,228.22; thence North 11,027.39 feet to the point of beginning, (This lease includes only waterbottoms claimed and owned by the state and specifically excludes any land which the state may claim or own and to which the mineral rights are vested in the state), containing approximately **40 acres**, all as more particularly outlined on a plat on file in the Office of Mineral Resources, Department of Natural Resources. All bearings, distances and coordinates are based on Louisiana Coordinate System of 1927, (North or South Zone), where applicable.

NOTE: The above description of the Tract nominated for lease has been provided and corrected, where required, exclusively by the nomination party. Any mineral lease selected from this Tract and awarded by the Louisiana State Mineral and Energy Board shall be without warranty of any kind, either express, implied, or statutory, including, but not limited to, the implied warranties of merchantability and fitness for a particular purpose. Should the mineral lease awarded by the Louisiana State Mineral and Energy Board be subsequently modified, cancelled or abrogated due to the existence of conflicting leases, operating agreements, private claims or other future obligations or conditions which may affect all or any portion of the leased Tract, it shall not relieve the Lessee of the obligation to pay any bonus due thereon to the Louisiana State Mineral and Energy Board, nor shall the Louisiana State Mineral and Energy Board be obligated to refund any consideration paid by the Lessor prior to such modification, cancellation, or abrogation, including, but not limited to, bonuses, rentals and royalties.

Applicant: LESLIE M. COOPER

Bidder	Cash Payment	Price/ Acre	Rental	Oil	Gas	Other

Legend

11040048

IMAGERY.DOQQ_2008_1M_CIR

0 3,000 Feet

N

AVOUELLES PARISH

T1S - R3E

P.O.B.

BAYOU BOEUF

BAYOU HUFFPOWER

T2S - R3E