

**TRACT 42081 - Bienville and Bossier Parishes, Louisiana**

All of the lands now or formerly constituting the beds and bottoms of all water bodies of every nature and description as to which title is vested in the State of Louisiana, together with all islands arising therein and other lands formed by accretion or by reliction, where allowed by law, excepting tax adjudicated lands, and not presently under mineral lease on June 8, 2011, situated in Bienville and Bossier Parishes, Louisiana, and more particularly described as follows: Beginning at the Southeast corner of State Lease No. 18096, as amended, having Coordinates of X = 1,714,872.03 and Y = 624,400.00; thence North 308.80 feet along the East boundary of said State Lease No. 18096 to a point having Coordinates of X = 1,714,872.03 and Y = 624,708.80; thence East 5,015.70 feet to a point having Coordinates of X = 1,719,887.73 and Y = 624,708.80; thence South 10,230.00 feet to a point on the boundary of State Lease No. 20355 having Coordinates of X = 1,719,887.73 and Y = 614,478.80; thence along the boundary of said State Lease No. 20355 the following courses: West 340.00 feet to a point having Coordinates of X = 1,719,547.73 and Y = 614,478.80 and South 304.06 feet to a point on the North boundary of State Lease No. 20337 having Coordinates of X = 1,719,547.73 and Y = 614,174.74; thence North 89 degrees 39 minutes 06 seconds West 2,270.02 feet along the North boundary of said State Lease No. 20337 to its Northwest corner having Coordinates of X = 1,717,277.76 and Y = 614,188.54; thence North 89 degrees 39 minutes 06 seconds West 2,405.77 feet to a point having Coordinates of X = 1,714,872.03 and Y = 614,203.17; thence North 10,196.83 feet to the point of beginning, (This tract includes only waterbottoms claimed and owned by the state and specifically excludes any land which the state may claim or own and to which the mineral rights are vested in the state), the above described tract containing approximately **241 acres**, all as more particularly outlined on a plat on file in the Office of Mineral Resources, Department of Natural Resources. All bearings, distances and coordinates are based on Louisiana Coordinate System of 1927, (North or South Zone), where applicable.

NOTE: The above description of the Tract nominated for lease has been provided and corrected, where required, exclusively by the nomination party. Any mineral lease selected from this Tract and awarded by the Louisiana State Mineral and Energy Board shall be without warranty of any kind, either express, implied, or statutory, including, but not limited to, the implied warranties of merchantability and fitness for a particular purpose. Should the mineral lease awarded by the Louisiana State Mineral and Energy Board be subsequently modified, cancelled or abrogated due to the existence of conflicting leases, operating agreements, private claims or other future obligations or conditions which may affect all or any portion of the leased Tract, it shall not relieve the Lessee of the obligation to pay any bonus due thereon to the Louisiana State Mineral and Energy Board, nor shall the Louisiana State Mineral and Energy Board be obligated to refund any consideration paid by the Lessor prior to such modification, cancellation, or abrogation, including, but not limited to, bonuses, rentals and royalties.

NOTE: This tract encompasses an area beneath which is located on the Bistineau Gas Storage Pool in the Sligo formation of the Pettet Porosity. Accordingly, any mineral related activity, including, but not limited to, the exploration and drilling for, and the production and storage of oil, gas and other liquid or gaseous minerals, conducted under a valid mineral lease which may be obtained from the State, shall be subject to any statewide orders issued by the Louisiana Office of Conservation pertinent to conducting such operations in this area and upon this tract, including particularly, but not limited to, the following: Order Nos. 287, 287-A, 287-A-1, 287-B, Supplement to 287-B, 287-B-1, 287-B-2 and 287-B-3. The successful bidder on this tract shall contact the operator of the Bistineau Gas Storage Pool and the Office of Conservation prior to initiating and conducting any of the aforementioned activity hereon.

NOTE: Bidders are hereby advised that certain areas in Lake Bistineau are the subject of litigation styled, Devon Energy Production Co., L.P. v. Gail Norton, Secretary, United States Department of the Interior, Docket No. 04-2093 (W.D. La.) wherein the Federal Government is claiming ownership or mineral rights to certain accreted lands, and, therefore, title to such accreted lands is in dispute. Any bids accepted by the State Mineral and Energy Board which result in a state mineral lease being given places the successful bidder on notice that, if the result of the above mentioned litigation is adverse to the State, the State's title to that adjudicated acreage, whether the whole or a part of the lease awarded, may be vitiated. Accordingly, all leases awarded by the State Mineral and Energy Board are without warranty of any kind, either express, implied, or statutory, including, but not limited to merchantability and fitness for a particular purpose. Should the awarded lease be subsequently modified, cancelled, or abrogated in any way as a result of the above mentioned or any other litigation, or conflicting private claims which affect or may affect all or any portion of the leased tract, the successful bidder/Lessee, their successors, or assigns shall not be relieved of the obligation to pay any monies due prior to the modification, cancellation, or abrogation, including, but not limited to, bonus, rental and royalty, nor shall the State be obligated to refund those monies paid.

Applicant: ASHLEY ANN ENERGY, L.L.C.

Bidder	Cash Payment	Price/ Acre	Rental	Oil	Gas	Other

11060012

- Active\_Leases
- Counties

IMAGERY.DOQQ\_2004\_11

BIENVILLE PARISH

T16N - R10W

LAKE BISTINEAU

SL 20355

SL 20337

P.O.B.

SL 18096

0 2,000 Feet

BOSSIER PARISH

T16N - R10W

**TRACT 42082 - Bienville Parish, Louisiana**

All of the lands now or formerly constituting the beds and bottoms of all water bodies of every nature and description as to which title is vested in the State of Louisiana, together with all islands arising therein and other lands formed by accretion or by reliction, where allowed by law, excepting tax adjudicated lands, and not presently under mineral lease on June 8, 2011, situated in Bienville Parish, Louisiana, and more particularly described as follows: Beginning at the Northeast corner of State Lease No. 19760, as amended, having Coordinates of X = 1,717,392.95 and Y = 603,474.48; thence East 7,576.38 feet to a point having Coordinates of X = 1,724,969.33 and Y = 603,474.48; thence South 5,233.66 feet to a point having Coordinates of X = 1,724,969.33 and Y = 598,240.82; thence West 6,287.21 feet to a point on the East boundary of said State Lease No. 19760 having Coordinates of X = 1,718,682.12 and Y = 598,240.82; thence North 13 degrees 50 minutes 16 seconds West 5,390.10 feet along the East boundary of said State Lease No. 19760 to the point of beginning, (This tract includes only waterbottoms claimed and owned by the state and specifically excludes any land which the state may claim or own and to which the mineral rights are vested in the state), the above described tract containing approximately **22 acres**, all as more particularly outlined on a plat on file in the Office of Mineral Resources, Department of Natural Resources. All bearings, distances and coordinates are based on Louisiana Coordinate System of 1927, (North or South Zone), where applicable.

NOTE: The above description of the Tract nominated for lease has been provided and corrected, where required, exclusively by the nomination party. Any mineral lease selected from this Tract and awarded by the Louisiana State Mineral and Energy Board shall be without warranty of any kind, either express, implied, or statutory, including, but not limited to, the implied warranties of merchantability and fitness for a particular purpose. Should the mineral lease awarded by the Louisiana State Mineral and Energy Board be subsequently modified, cancelled or abrogated due to the existence of conflicting leases, operating agreements, private claims or other future obligations or conditions which may affect all or any portion of the leased Tract, it shall not relieve the Lessee of the obligation to pay any bonus due thereon to the Louisiana State Mineral and Energy Board, nor shall the Louisiana State Mineral and Energy Board be obligated to refund any consideration paid by the Lessor prior to such modification, cancellation, or abrogation, including, but not limited to, bonuses, rentals and royalties.

Applicant: ASHLEY ANN ENERGY, L.L.C.

Bidder	Cash Payment	Price/ Acre	Rental	Oil	Gas	Other



11060011

Active\_Leases

IMAGERY.DOQQ\_2004\_11

BIENVILLE PARISH

T16N - R10W

LAKE BISTINEAU

T15N - R10W

P.O.B.

SL 19787

SL 19760

0 2,000 Feet

**TRACT 42083 - Bossier Parish, Louisiana**

All of the lands now or formerly constituting the beds and bottoms of all water bodies of every nature and description as to which title is vested in the State of Louisiana, together with all islands arising therein and other lands formed by accretion or by reliction, where allowed by law, excepting tax adjudicated lands, and not presently under mineral lease on June 8, 2011, situated in Bossier Parish, Louisiana, and more particularly described as follows: Beginning at a point said to be on the West boundary of State Lease No. 17126, as amended, said point also being the Northernmost Northeast corner of State Lease No. 19764 having Coordinates of X = 1,703,842.94 and Y = 587,882.74; thence Westerly approximately 160 feet along the Northern boundary of said State Lease No. 19764 to the Southeast corner of State Lease No. 16397, as amended; thence Northerly approximately 5,330 feet along the East boundary of said State Lease No. 16397 to its Northeast corner, said point being located on the Southern boundary of State Lease No. 18245, also being the Southern boundary of State Lease No. 18276; thence Easterly approximately 185 feet along the Southern boundary of State Lease No. 18245 and State Lease No. 18276 to a point said to be on the West boundary of said State Lease No. 17126 having Coordinates of X = 1,703,916.15 and Y = 593,233.90; thence South 00 degrees 47 minutes 02 seconds West 5,351.66 feet along the West boundary of said State Lease No. 17126 to the point of beginning, **LESS AND EXCEPT** that portion, if any, of State Lease No. 16397, as amended, State Lease No. 18245, State Lease No. 18276, and State Lease No. 19764 which may lie within the above described tract, the above described tract containing approximately **0.15 acres**, all as more particularly outlined on a plat on file in the Office of Mineral Resources, Department of Natural Resources. All bearings, distances and coordinates are based on Louisiana Coordinate System of 1927, (North or South Zone), where applicable.

NOTE: The above description of the Tract nominated for lease has been provided and corrected, where required, exclusively by the nomination party. Any mineral lease selected from this Tract and awarded by the Louisiana State Mineral and Energy Board shall be without warranty of any kind, either express, implied, or statutory, including, but not limited to, the implied warranties of merchantability and fitness for a particular purpose. Should the mineral lease awarded by the Louisiana State Mineral and Energy Board be subsequently modified, cancelled or abrogated due to the existence of conflicting leases, operating agreements, private claims or other future obligations or conditions which may affect all or any portion of the leased Tract, it shall not relieve the Lessee of the obligation to pay any bonus due thereon to the Louisiana State Mineral and Energy Board, nor shall the Louisiana State Mineral and Energy Board be obligated to refund any consideration paid by the Lessor prior to such modification, cancellation, or abrogation, including, but not limited to, bonuses, rentals and royalties.

Applicant: ASHLEY ANN ENERGY, L.L.C.

Bidder	Cash Payment	Price/ Acre	Rental	Oil	Gas	Other





Legend

11060010

Active\_Leases

IMAGERY.DOQQ\_2004\_1M

BOSSIER PARISH

T15N - R11W

SL 17126

FLAT RIVER

P.O.B.

SL 18245

SL 16397

SL 19764

SL 18276

0 1,000 Feet

**TRACT 42084 - Red River Parish, Louisiana**

All of the lands now or formerly constituting the beds and bottoms of all water bodies of every nature and description as to which title is vested in the State of Louisiana, together with all islands arising therein and other lands formed by accretion or by reliction, where allowed by law, excepting tax adjudicated lands, and not presently under mineral lease on June 8, 2011, situated in Red River Parish, Louisiana, and more particularly described as follows: Section 18, Township 13 North, Range 9 West, Red River Parish, Louisiana. **LESS AND EXCEPT** that portion, if any, of State Lease No. 19833, as amended, that may lie within the above described tract, containing approximately **14 acres**, all as more particularly outlined on a plat on file in the Office of Mineral Resources, Department of Natural Resources. All bearings, distances and coordinates are based on Louisiana Coordinate System of 1927, (North or South Zone), where applicable.

NOTE: The above description of the Tract nominated for lease has been provided and corrected, where required, exclusively by the nomination party. Any mineral lease selected from this Tract and awarded by the Louisiana State Mineral and Energy Board shall be without warranty of any kind, either express, implied, or statutory, including, but not limited to, the implied warranties of merchantability and fitness for a particular purpose. Should the mineral lease awarded by the Louisiana State Mineral and Energy Board be subsequently modified, cancelled or abrogated due to the existence of conflicting leases, operating agreements, private claims or other future obligations or conditions which may affect all or any portion of the leased Tract, it shall not relieve the Lessee of the obligation to pay any bonus due thereon to the Louisiana State Mineral and Energy Board, nor shall the Louisiana State Mineral and Energy Board be obligated to refund any consideration paid by the Lessor prior to such modification, cancellation, or abrogation, including, but not limited to, bonuses, rentals and royalties.

Applicant: STAFF OFFICE OF MINERAL RESOURCES

Bidder	Cash Payment	Price/ Acre	Rental	Oil	Gas	Other

Legend

11060006

Active\_Leases

IMAGERY.DOQQ\_2004\_1M





**TRACT 42085 - Red River Parish, Louisiana**

All of the lands now or formerly constituting the beds and bottoms of all water bodies of every nature and description as to which title is vested in the State of Louisiana, together with all islands arising therein and other lands formed by accretion or by reliction, where allowed by law, excepting tax adjudicated lands, and not presently under mineral lease on June 8, 2011, situated in Red River Parish, Louisiana, and more particularly described as follows: Section 19, Township 13 North, Range 9 West, Red River Parish, Louisiana. **LESS AND EXCEPT** that portion, if any, of State Lease No. 19833, as amended, and State Lease No. 19836, as amended, that may lie within the above described tract, containing approximately **14 acres**, all as more particularly outlined on a plat on file in the Office of Mineral Resources, Department of Natural Resources. All bearings, distances and coordinates are based on Louisiana Coordinate System of 1927, (North or South Zone), where applicable.

NOTE: The above description of the Tract nominated for lease has been provided and corrected, where required, exclusively by the nomination party. Any mineral lease selected from this Tract and awarded by the Louisiana State Mineral and Energy Board shall be without warranty of any kind, either express, implied, or statutory, including, but not limited to, the implied warranties of merchantability and fitness for a particular purpose. Should the mineral lease awarded by the Louisiana State Mineral and Energy Board be subsequently modified, cancelled or abrogated due to the existence of conflicting leases, operating agreements, private claims or other future obligations or conditions which may affect all or any portion of the leased Tract, it shall not relieve the Lessee of the obligation to pay any bonus due thereon to the Louisiana State Mineral and Energy Board, nor shall the Louisiana State Mineral and Energy Board be obligated to refund any consideration paid by the Lessor prior to such modification, cancellation, or abrogation, including, but not limited to, bonuses, rentals and royalties.

Applicant: STAFF OFFICE OF MINERAL RESOURCES

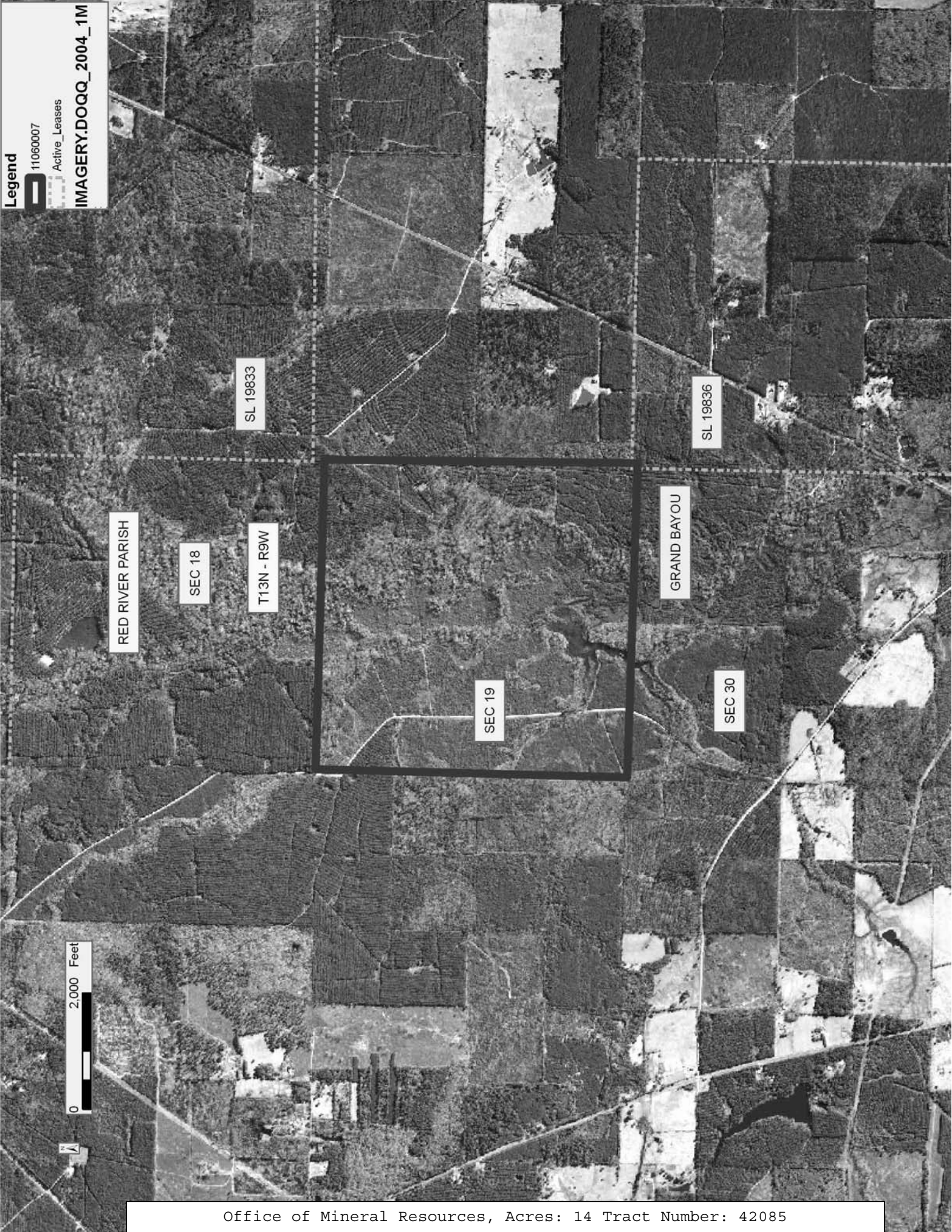
Bidder	Cash Payment	Price/ Acre	Rental	Oil	Gas	Other

Legend

11060007

Active\_Leases

IMAGERY.DOQQ\_2004\_1M



**TRACT 42086 - Red River Parish, Louisiana**

All of the lands now or formerly constituting the beds and bottoms of all water bodies of every nature and description as to which title is vested in the State of Louisiana, together with all islands arising therein and other lands formed by accretion or by reliction, where allowed by law, excepting tax adjudicated lands, and not presently under mineral lease on June 8, 2011, situated in Red River Parish, Louisiana, and more particularly described as follows: Section 30, Township 13 North, Range 9 West, Red River Parish, Louisiana. **LESS AND EXCEPT** that portion, if any, of State Lease No. 19836, as amended, that may lie within the above described tract, containing approximately **11 acres**, all as more particularly outlined on a plat on file in the Office of Mineral Resources, Department of Natural Resources. All bearings, distances and coordinates are based on Louisiana Coordinate System of 1927, (North or South Zone), where applicable.

NOTE: The above description of the Tract nominated for lease has been provided and corrected, where required, exclusively by the nomination party. Any mineral lease selected from this Tract and awarded by the Louisiana State Mineral and Energy Board shall be without warranty of any kind, either express, implied, or statutory, including, but not limited to, the implied warranties of merchantability and fitness for a particular purpose. Should the mineral lease awarded by the Louisiana State Mineral and Energy Board be subsequently modified, cancelled or abrogated due to the existence of conflicting leases, operating agreements, private claims or other future obligations or conditions which may affect all or any portion of the leased Tract, it shall not relieve the Lessee of the obligation to pay any bonus due thereon to the Louisiana State Mineral and Energy Board, nor shall the Louisiana State Mineral and Energy Board be obligated to refund any consideration paid by the Lessor prior to such modification, cancellation, or abrogation, including, but not limited to, bonuses, rentals and royalties.

Applicant: STAFF OFFICE OF MINERAL RESOURCES

Bidder	Cash Payment	Price/ Acre	Rental	Oil	Gas	Other



Legend

11060008

Active\_Leases

IMAGERY.DOQQ\_2004\_1M

0 2,000 Feet

RED RIVER PARISH

T13N - R9W

GRAND BAYOU

SEC 19

SEC 30

SEC 31

SL 19836

T13N - R10W

**TRACT 42087 - Red River Parish, Louisiana**

All of the lands now or formerly constituting the beds and bottoms of all water bodies of every nature and description as to which title is vested in the State of Louisiana, together with all islands arising therein and other lands formed by accretion or by reliction, where allowed by law, excepting tax adjudicated lands, and not presently under mineral lease on June 8, 2011, situated in Red River Parish, Louisiana, and more particularly described as follows: Section 31, Township 13 North, Range 9 West, Red River Parish, Louisiana. **LESS AND EXCEPT** that portion, if any, of State Lease No. 19836, as amended, and State Lease No. 20075 that may lie within the above described tract, containing approximately **2 acres**, all as more particularly outlined on a plat on file in the Office of Mineral Resources, Department of Natural Resources. All bearings, distances and coordinates are based on Louisiana Coordinate System of 1927, (North or South Zone), where applicable.

NOTE: The above description of the Tract nominated for lease has been provided and corrected, where required, exclusively by the nomination party. Any mineral lease selected from this Tract and awarded by the Louisiana State Mineral and Energy Board shall be without warranty of any kind, either express, implied, or statutory, including, but not limited to, the implied warranties of merchantability and fitness for a particular purpose. Should the mineral lease awarded by the Louisiana State Mineral and Energy Board be subsequently modified, cancelled or abrogated due to the existence of conflicting leases, operating agreements, private claims or other future obligations or conditions which may affect all or any portion of the leased Tract, it shall not relieve the Lessee of the obligation to pay any bonus due thereon to the Louisiana State Mineral and Energy Board, nor shall the Louisiana State Mineral and Energy Board be obligated to refund any consideration paid by the Lessor prior to such modification, cancellation, or abrogation, including, but not limited to, bonuses, rentals and royalties.

Applicant: STAFF OFFICE OF MINERAL RESOURCES

Bidder	Cash Payment	Price/ Acre	Rental	Oil	Gas	Other



Legend

11060009

Active\_Leases

IMAGERY.DOQQ\_2004\_1M

0 2,000 Feet

RED RIVER PARISH

T13N - R9W

SEC 30

GRAND BAYOU

SL 19836

SEC 31

T12N - R9W

SEC 6

SL 20075

**TRACT 42088 - De Soto and Natchitoches Parishes, Louisiana**

All of the lands now or formerly constituting the beds and bottoms of all water bodies of every nature and description as to which title is vested in the State of Louisiana, together with all islands arising therein and other lands formed by accretion or by reliction, where allowed by law, excepting tax adjudicated lands, and not presently under mineral lease on June 8, 2011, situated in De Soto and Natchitoches Parishes, Louisiana, and more particularly described as follows: Beginning at a point on the North boundary of State Lease No. 20158 and a point on the East boundary of State Lease No. 15500 having Coordinates of X = 1,710,500.00 and Y = 472,205.00; thence North 5,160.00 feet along the East boundary of said State Lease No. 15500 to a point on the South boundary of State Lease No. 20156 having Coordinates of X = 1,710,500.00 and Y = 477,365.00; thence East 8,521.02 feet along the South boundary of said State Lease No. 20156 to a point having Coordinates of X = 1,719,021.02 and Y = 477,365.00; thence South 00 degrees 42 minutes 28 Seconds West 5,261.38 feet to a point having Coordinates of X = 1,718,956.04 and Y = 472,104.02; thence South 89 degrees 16 minutes 13 seconds East 5,109.38 feet to a point having Coordinates of X = 1,724,065.00 and Y = 472,038.95; thence South 10,368.95 feet to a point having Coordinates of X = 1,724,065.00 and Y = 461,670.00; thence West 15,875.00 feet to the Southeast corner of State Lease No. 20159 having Coordinates of X = 1,708,190.00 and Y = 461,670.00; thence North 01 degrees 22 minutes 27 seconds East 5,274.22 feet along the East boundary of said State Lease No. 20159 to its Northeast corner and the Southwest corner of said State Lease No. 20158 having Coordinates of X = 1,708,316.49 and Y = 466,942.70; thence along the boundaries of said State Lease No. 20158 the following courses: South 89 degrees 13 minutes 56 seconds East 5,258.35 feet to a point having Coordinates of X = 1,713,574.37 and Y = 466,872.23, North 01 degrees 18 minutes 14 seconds East 5,300.17 feet to a point having Coordinates of X = 1,713,694.97 and Y = 472,171.03, and North 89 degrees 23 minutes 27 seconds West 3,195.15 feet to the point of beginning, containing approximately **108 acres**, all as more particularly outlined on a plat on file in the Office of Mineral Resources, Department of Natural Resources. All bearings, distances and coordinates are based on Louisiana Coordinate System of 1927, (North or South Zone), where applicable.

NOTE: The above description of the Tract nominated for lease has been provided and corrected, where required, exclusively by the nomination party. Any mineral lease selected from this Tract and awarded by the Louisiana State Mineral and Energy Board shall be without warranty of any kind, either express, implied, or statutory, including, but not limited to, the implied warranties of merchantability and fitness for a particular purpose. Should the mineral lease awarded by the Louisiana State Mineral and Energy Board be subsequently modified, cancelled or abrogated due to the existence of conflicting leases, operating agreements, private claims or other future obligations or conditions which may affect all or any portion of the leased Tract, it shall not relieve the Lessee of the obligation to pay any bonus due thereon to the Louisiana State Mineral and

Energy Board, nor shall the Louisiana State Mineral and Energy Board be obligated to refund any consideration paid by the Lessor prior to such modification, cancellation, or abrogation, including, but not limited to, bonuses, rentals and royalties.

Applicant: MARK A. O'NEAL & ASSOCIATES, INC.

Bidder	Cash Payment	Price/ Acre	Rental	Oil	Gas	Other

**Legend**

11060054

Active\_Leases

IMAGERY.DOQQ\_2004\_1M





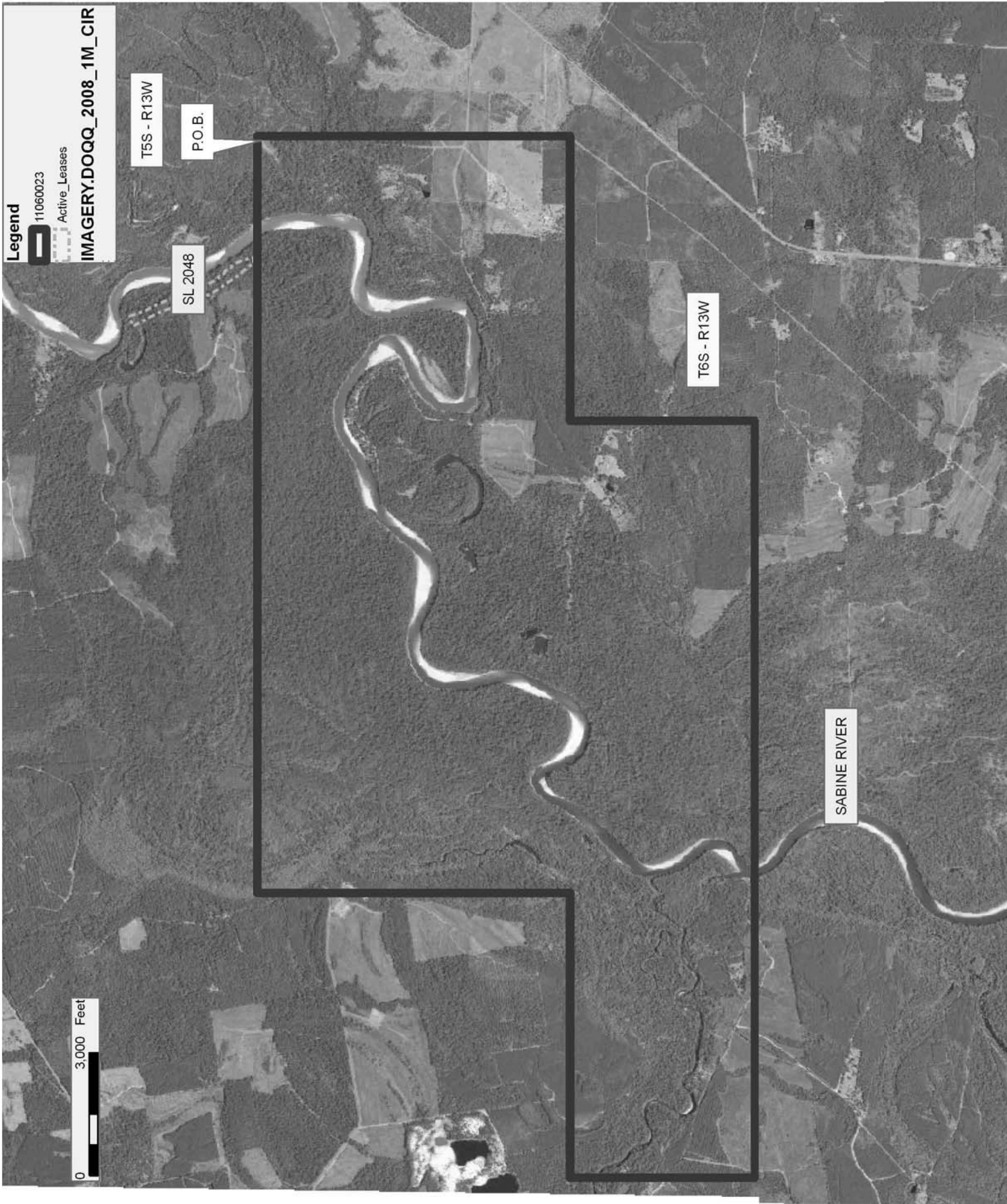
**TRACT 42089 - Beauregard Parish, Louisiana**

All of the lands now or formerly constituting the beds and bottoms of all water bodies of every nature and description the title of which vests in the State of Louisiana, together with all islands arising therein and other lands formed by accretion or by reliction, where allowed by law, excepting tax adjudicated lands, and not presently under mineral lease on June 8, 2011, situated in Beauregard Parish, Louisiana, and more particularly described as follows: Beginning at a point having Coordinates of X = 1,264,253.00 and Y = 710,598.00; thence South for a distance of 7,600.00 feet to a point having Coordinates of X = 1,264,253.00 and Y = 702,998.00; thence West for a distance of 6,920.00 feet to a point having Coordinates of X = 1,257,333.00 and Y = 702,998.00; thence South for a distance of 4,500.00 feet to a point having Coordinates of X = 1,257,333.00 and Y = 698,498.00; thence West for a distance of 18,400.00 feet to a point having Coordinates of X = 1,238,933.00 and Y = 698,498.00; thence North for a distance of 4,500.00 feet to a point having Coordinates of X = 1,238,933.00 and Y = 702,998.00; thence East for a distance of 6,920.00 feet to a point having Coordinates of X = 1,245,853.00 and Y = 702,998.00; thence North for a distance of 7,600.00 feet to a point having Coordinates of X = 1,245,853.00 and Y = 710,598.00; thence East for a distance of 18,400.00 feet to the Point of Beginning, containing **137 acres, LESS AND EXCEPT** that portion thereof, if any, located West of the boundary line between the States of Texas and Louisiana as determined by the report of the Special Master and adjudicated by the Supreme Court of the United States in litigation styled **Texas v. Louisiana, et al No. 36 Original**, or as otherwise approved by said court, all as more particularly outlined on a plat on file in the Office of Mineral Resources, Department of Natural Resources. All bearings, distances and coordinates are based on Louisiana Coordinate System of 1927, (North or South Zone), where applicable.

NOTE: The above description of the Tract nominated for lease has been provided and corrected, where required, exclusively by the nomination party. Any mineral lease selected from this Tract and awarded by the Louisiana State Mineral and Energy Board shall be without warranty of any kind, either express, implied, or statutory, including, but not limited to, the implied warranties of merchantability and fitness for a particular purpose. Should the mineral lease awarded by the Louisiana State Mineral and Energy Board be subsequently modified, cancelled or abrogated due to the existence of conflicting leases, operating agreements, private claims or other future obligations or conditions which may affect all or any portion of the leased Tract, it shall not relieve the Lessee of the obligation to pay any bonus due thereon to the Louisiana State Mineral and Energy Board, nor shall the Louisiana State Mineral and Energy Board be obligated to refund any consideration paid by the Lessor prior to such modification, cancellation, or abrogation, including, but not limited to, bonuses, rentals and royalties.

Applicant: AMEX RESOURCES, INC.

Bidder	Cash Payment	Price/ Acre	Rental	Oil	Gas	Other



**TRACT 42090 - Allen Parish, Louisiana**

All of the lands now or formerly constituting the beds and bottoms of all water bodies of every nature and description as to which title is vested in the State of Louisiana, together with all islands arising therein and other lands formed by accretion or by reliction, where allowed by law, excepting tax adjudicated lands, and not presently under mineral lease on June 8, 2011, situated in Allen Parish, Louisiana, and more particularly described as follows: Beginning at a point having Coordinates of X = 1,492,779.00 and Y = 704,575.00; thence East 2,995.00 feet to a point having Coordinates of X = 1,495,774.00 and Y = 704,575.00; thence South 1,447.00 feet to a point having Coordinates of X = 1,495,774.00 and Y = 703,128.00; thence East 2,798.00 feet to a point having Coordinates of X = 1,498,572.00 and Y = 703,128.00; thence South 2,637.00 feet to a point having Coordinates of X = 1,498,572.00 and Y = 700,491.00; thence West 5,793.00 feet to a point having Coordinates of X = 1,492,779.00 and Y = 700,491.00; thence North 4,084.00 feet to the point of beginning, containing approximately **28 acres**, all as more particularly outlined on a plat on file in the Office of Mineral Resources, Department of Natural Resources. All bearings, distances and coordinates are based on Louisiana Coordinate System of 1927, (North or South Zone), where applicable.

NOTE: The above description of the Tract nominated for lease has been provided and corrected, where required, exclusively by the nomination party. Any mineral lease selected from this Tract and awarded by the Louisiana State Mineral and Energy Board shall be without warranty of any kind, either express, implied, or statutory, including, but not limited to, the implied warranties of merchantability and fitness for a particular purpose. Should the mineral lease awarded by the Louisiana State Mineral and Energy Board be subsequently modified, cancelled or abrogated due to the existence of conflicting leases, operating agreements, private claims or other future obligations or conditions which may affect all or any portion of the leased Tract, it shall not relieve the Lessee of the obligation to pay any bonus due thereon to the Louisiana State Mineral and Energy Board, nor shall the Louisiana State Mineral and Energy Board be obligated to refund any consideration paid by the Lessor prior to such modification, cancellation, or abrogation, including, but not limited to, bonuses, rentals and royalties.

NOTE: The above Tract is located upon a restricted scenic river and all operations in this area must be conducted in strict conformity with the regulations of the Corps of Engineers, U.S. Army.

Applicant: PATRICK L. DONOHUE PETROLEUM PROPERTIES, INC.

Bidder	Cash Payment	Price/ Acre	Rental	Oil	Gas	Other

Legend

11060053

IMAGERY.DOQQ\_2008\_1M\_CIR

0 2,000 Feet

N

ALLEN PARISH

T5S - R6W

T5S - R5W

P.O.B.

WHISKEY CHITTO CREEK