

**TRACT 42101 - Lafourche and St. Charles Parishes, Louisiana**

All of the lands now or formerly constituting the beds and bottoms of all water bodies of every nature and description as to which title is vested in the State of Louisiana, together with all islands arising therein and other lands formed by accretion or by reliction, where allowed by law, excepting tax adjudicated lands, and not presently under mineral lease on June 8, 2011, situated in Lafourche and St. Charles Parishes, Louisiana, and more particularly described as follows: Beginning at a point having Coordinates X = 2,316,605.00 and Y = 375,810.00; thence East 11,572.00 feet to a point having Coordinates of X = 2,328,177.00 and Y = 375,810.00; thence South 9,475.00 feet to a point having Coordinates of X = 2,328,177.00 and Y = 366,335.00; thence West 11,572.00 feet to a point having Coordinates of X = 2,316,605.00 and Y = 366,335.00; thence North 9,475.00 feet to the point of beginning **LESS AND EXCEPT** tax lands and Section 16 lands that lie within the above described tract, containing approximately **1,857 acres**, all as more particularly outlined on a plat on file in the Office of Mineral Resources, Department of Natural Resources. All bearings, distances and coordinates are based on Louisiana Coordinate System of 1927, (North or South Zone), where applicable.

NOTE: The above description of the Tract nominated for lease has been provided and corrected, where required, exclusively by the nomination party. Any mineral lease selected from this Tract and awarded by the Louisiana State Mineral and Energy Board shall be without warranty of any kind, either express, implied, or statutory, including, but not limited to, the implied warranties of merchantability and fitness for a particular purpose. Should the mineral lease awarded by the Louisiana State Mineral and Energy Board be subsequently modified, cancelled or abrogated due to the existence of conflicting leases, operating agreements, private claims or other future obligations or conditions which may affect all or any portion of the leased Tract, it shall not relieve the Lessee of the obligation to pay any bonus due thereon to the Louisiana State Mineral and Energy Board, nor shall the Louisiana State Mineral and Energy Board be obligated to refund any consideration paid by the Lessor prior to such modification, cancellation, or abrogation, including, but not limited to, bonuses, rentals and royalties.

NOTE: The State of Louisiana does hereby reserve, and this lease shall be subject to, the imprescriptible right of surface use in the nature of a servitude in favor of the Department of Natural Resources, including its Offices and Commissions, for the sole purpose of implementing, constructing, servicing and maintaining approved coastal zone management and/or restoration projects. Utilization of any and all rights derived under this lease by the mineral lessee, its agents, successors or assigns, shall not interfere with nor hinder the reasonable surface use by the Department of Natural Resources, its Offices or Commissions, as herein above reserved.

Applicant: SOUTHLAND OIL PROPERTIES, INC.

Bidder	Cash Payment	Price/Acre	Rental	Oil	Gas	Other

Legend

11060040

Counties

IMAGERY.DOQQ\_2008\_1M\_CIR

ST CHARLES PARISH

LAKE SALVADOR

LAFOURCHE PARISH

0 2,000 Feet



P.O.B.

T16S - R21E

**TRACT 42102 - Lafourche and St. Charles Parishes, Louisiana**

All of the lands now or formerly constituting the beds and bottoms of all water bodies of every nature and description as to which title is vested in the State of Louisiana, together with all islands arising therein and other lands formed by accretion or by reliction, where allowed by law, excepting tax adjudicated lands, and not presently under mineral lease on June 8, 2011, situated in Lafourche and St. Charles Parishes, Louisiana, and more particularly described as follows: Beginning at a point having Coordinates X = 2,328,177.00 and Y = 375,810.00; thence East 5,670.23 feet to a point on the West line of State Lease No. 19201, having Coordinates of X = 2,333,847.23 and Y = 375,810.00; thence along the boundaries of said State Lease No. 19201 the following courses: South 17 degrees 57 minutes 47 seconds East 1,792.37 feet to a point having Coordinates of X = 2,334,400.00 and Y = 374,105.00, South 40 degrees 57 minutes 13 seconds East 4,108.63 feet to a point having Coordinates of X = 2,337,093.00 and Y = 371,002.00, North 73 degrees 38 minutes 34 seconds East 898.36 feet to a point having Coordinates of X = 2,337,955.00 and Y = 371,255.00 and North 20 degrees 42 minutes 16 seconds West 4,405.17 feet to a point on the East line of said State Lease No. 19201, also being the Southwest corner of State Lease No. 19773, having Coordinates of X = 2,336,397.57 and Y = 375,375.67; thence East 1,737.43 feet along the South line of said State Lease No. 19773 to its Southeast corner, also being a point on the West line of State Lease No. 19232, having Coordinates of X = 2,338,135.00 and Y = 375,375.67; thence along the boundaries of said State Lease No. 19232 the following courses: South 2,075.67 feet to a point having Coordinates of X = 2,338,135.00 and Y = 373,300.00 and East 1,429.00 feet to a point on the South line of said State Lease No. 19232, having Coordinates of X = 2,339,564.00 and Y = 373,300.00; thence South 6,965.00 feet to a point having Coordinates of X = 2,339,564.00 and Y = 366,335.00; thence West 11,387.00 feet to a point having Coordinates of X = 2,328,177.00 and Y = 366,335.00; thence North 9,475.00 feet to the point of beginning, containing approximately **2,161.60 acres**, all as more particularly outlined on a plat on file in the Office of Mineral Resources, Department of Natural Resources. All bearings, distances and coordinates are based on Louisiana Coordinate System of 1927, (North or South Zone), where applicable.

NOTE: The above description of the Tract nominated for lease has been provided and corrected, where required, exclusively by the nomination party. Any mineral lease selected from this Tract and awarded by the Louisiana State Mineral and Energy Board shall be without warranty of any kind, either express, implied, or statutory, including, but not limited to, the implied warranties of merchantability and fitness for a particular purpose. Should the mineral lease awarded by the Louisiana State Mineral and Energy Board be subsequently modified, cancelled or abrogated due to the existence of conflicting leases, operating agreements, private claims or other future obligations or conditions which may affect all or any portion of the leased Tract, it shall not relieve the Lessee of the obligation to pay any bonus due thereon to the Louisiana State Mineral and

Energy Board, nor shall the Louisiana State Mineral and Energy Board be obligated to refund any consideration paid by the Lessor prior to such modification, cancellation, or abrogation, including, but not limited to, bonuses, rentals and royalties.

NOTE: The State of Louisiana does hereby reserve, and this lease shall be subject to, the imprescriptible right of surface use in the nature of a servitude in favor of the Department of Natural Resources, including its Offices and Commissions, for the sole purpose of implementing, constructing, servicing and maintaining approved coastal zone management and/or restoration projects. Utilization of any and all rights derived under this lease by the mineral lessee, its agents, successors or assigns, shall not interfere with nor hinder the reasonable surface use by the Department of Natural Resources, its Offices or Commissions, as herein above reserved.

Applicant: SOUTHLAND OIL PROPERTIES, INC.

Bidder	Cash Payment	Price/Acre	Rental	Oil	Gas	Other

**Legend**  
11060042  
Active\_Leases  
Counties

ST CHARLES PARISH

SL 19773

SL 19201

SL 19232

LAFOURCHE PARISH

LAKE SALVADOR



P.O.B.

T16S - R21E

**TRACT 42103 - Plaquemines Parish, Louisiana**

All of the lands now or formerly constituting the beds and bottoms of all water bodies of every nature and description as to which title is vested in the State of Louisiana, together with all islands arising therein and other lands formed by accretion or by reliction, where allowed by law, excepting tax adjudicated lands, and not presently under mineral lease on June 8, 2011, situated in Plaquemines Parish, Louisiana, and more particularly described as follows: Beginning at a point having Coordinates of X = 2,557,304.87 and Y = 239,807.44; Thence South 09 degrees 05 minutes 40 seconds West 5,685.93 feet to a point having Coordinates of X = 2,556,406.15 and Y = 234,192.99; Thence South 88 degrees 14 minutes 01 seconds West approximately 3,254 feet to a point of intersection with the Western boundary of State Lease No. 2651, as amended; Thence along the boundary of said State Lease No. 2651, as amended, the following courses: Northerly approximately 7,800 feet and Easterly approximately 4,267 feet to a point having a Coordinate of X = 2,557,304.87; Thence South approximately 2,148 feet to the point of beginning, **LESS AND EXCEPT** that portion, if any of State Lease No. 2651, as amended, and State Lease No. 2652, as amended, that may lie within the above described tract containing approximately **22 acres**, all as more particularly outlined on a plat on file in the Office of Mineral Resources, Department of Natural Resources. All bearings, distances and coordinates are based on Louisiana Coordinate System of 1927, (North or South Zone), where applicable.

NOTE: The above description of the Tract nominated for lease has been provided and corrected, where required, exclusively by the nomination party. Any mineral lease selected from this Tract and awarded by the Louisiana State Mineral and Energy Board shall be without warranty of any kind, either express, implied, or statutory, including, but not limited to, the implied warranties of merchantability and fitness for a particular purpose. Should the mineral lease awarded by the Louisiana State Mineral and Energy Board be subsequently modified, cancelled or abrogated due to the existence of conflicting leases, operating agreements, private claims or other future obligations or conditions which may affect all or any portion of the leased Tract, it shall not relieve the Lessee of the obligation to pay any bonus due thereon to the Louisiana State Mineral and Energy Board, nor shall the Louisiana State Mineral and Energy Board be obligated to refund any consideration paid by the Lessor prior to such modification, cancellation, or abrogation, including, but not limited to, bonuses, rentals and royalties.

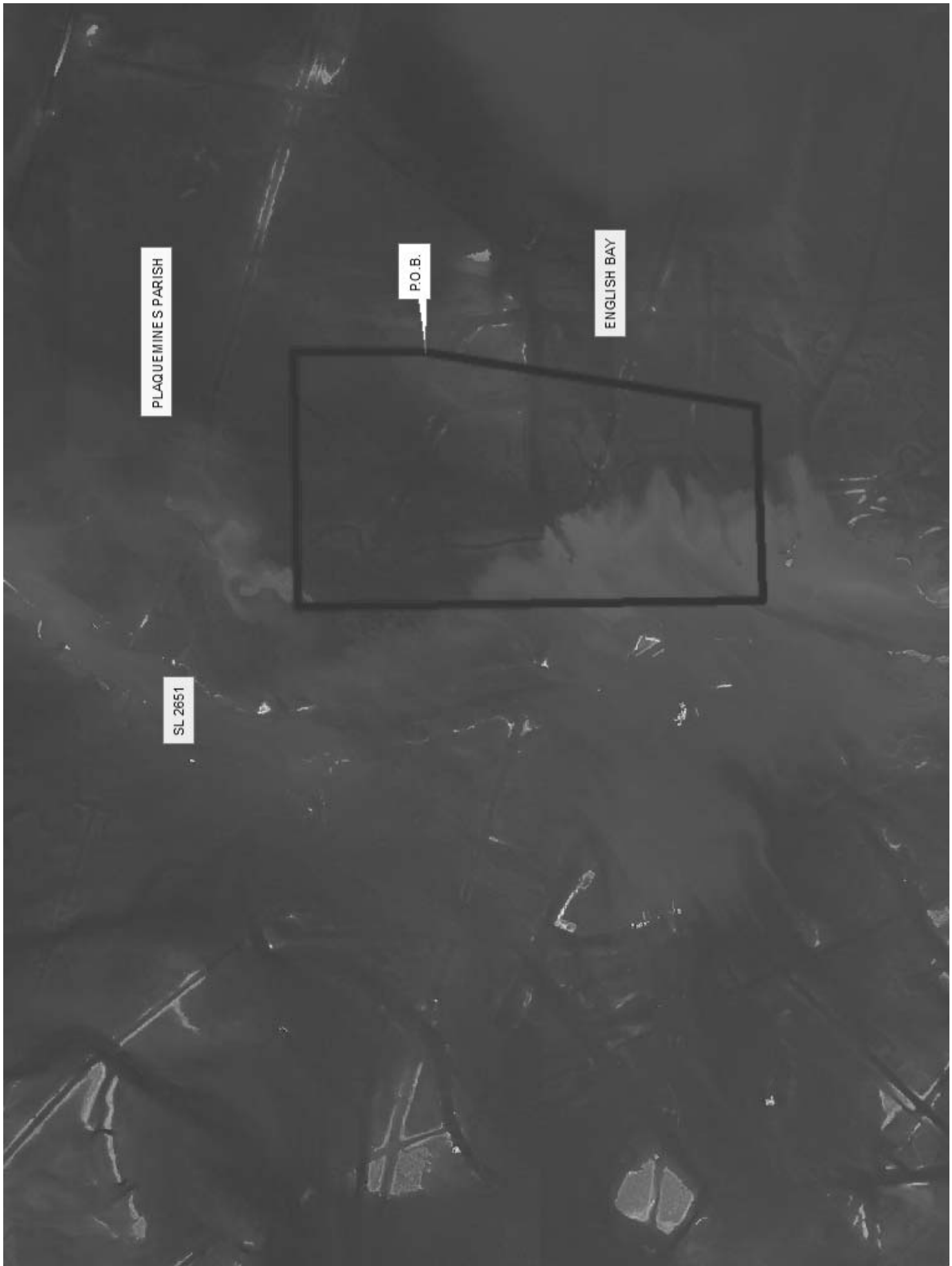
NOTE: The State of Louisiana does hereby reserve, and this lease shall be subject to, the imprescriptible right of surface use in the nature of a servitude in favor of the Department of Natural Resources, including its Offices and Commissions, for the sole purpose of implementing, constructing, servicing and maintaining approved coastal zone management and/or restoration projects. Utilization of any and all rights derived under this lease by the mineral lessee, its agents, successors or assigns, shall not interfere with nor hinder the reasonable surface use by the

Department of Natural Resources, its Offices or Commissions, as herein above reserved.

Applicant: PETRO-LAND SERVICES, INC.

Bidder	Cash Payment	Price/Acre	Rental	Oil	Gas	Other





**TRACT 42104 - Plaquemines Parish, Louisiana**

All of the lands now or formerly constituting the beds and bottoms of all water bodies of every nature and description as to which title is vested in the State of Louisiana, together with all islands arising therein and other lands formed by accretion or by reliction, where allowed by law, excepting tax adjudicated lands, and not presently under mineral lease on June 8, 2011, situated in Plaquemines Parish, Louisiana, and more particularly described as follows: Beginning at a point having Coordinates of X = 2,560,647.47 and Y = 240,927.00; Thence North 88 degrees 19 minutes 58 seconds East 5,244.48 feet to a point having Coordinates of X = 2,565,889.72 and Y = 241,079.59; Thence South 01 degrees 41 minutes 30 seconds East 6,603.46 feet to a point having Coordinates of X = 2,566,084.65 and Y = 234,479.01; Thence South 88 degrees 22 minutes 14 seconds West approximately 2,121 feet to a point of intersection with the Eastern boundary of State Lease No. 192, as amended; Thence Northerly, Westerly and Southwesterly along the boundaries of said State Lease No. 192, as amended, to a point of intersection with a line which bears South 01 degrees 42 minutes 02 seconds East from the point of beginning; Thence North 01 degrees 42 minutes 02 seconds West approximately 1,536 feet to the point of beginning, **LESS AND EXCEPT** that portion, if any of State Lease No. 192, as amended, being English Bay, State Lease No. 3212, being Bayou Auguste and Bayou LeBoon as its boundaries existed in 1957, and State Lease No. 2651, as amended, that may lie within the above described tract containing approximately **254 acres**, all as more particularly outlined on a plat on file in the Office of Mineral Resources, Department of Natural Resources. All bearings, distances and coordinates are based on Louisiana Coordinate System of 1927, (North or South Zone), where applicable.

NOTE: The above description of the Tract nominated for lease has been provided and corrected, where required, exclusively by the nomination party. Any mineral lease selected from this Tract and awarded by the Louisiana State Mineral and Energy Board shall be without warranty of any kind, either express, implied, or statutory, including, but not limited to, the implied warranties of merchantability and fitness for a particular purpose. Should the mineral lease awarded by the Louisiana State Mineral and Energy Board be subsequently modified, cancelled or abrogated due to the existence of conflicting leases, operating agreements, private claims or other future obligations or conditions which may affect all or any portion of the leased Tract, it shall not relieve the Lessee of the obligation to pay any bonus due thereon to the Louisiana State Mineral and Energy Board, nor shall the Louisiana State Mineral and Energy Board be obligated to refund any consideration paid by the Lessor prior to such modification, cancellation, or abrogation, including, but not limited to, bonuses, rentals and royalties.

NOTE: The State of Louisiana does hereby reserve, and this lease shall be subject to, the imprescriptible right of surface use in the nature of a servitude in favor of the Department of Natural Resources, including its

Offices and Commissions, for the sole purpose of implementing, constructing, servicing and maintaining approved coastal zone management and/or restoration projects. Utilization of any and all rights derived under this lease by the mineral lessee, its agents, successors or assigns, shall not interfere with nor hinder the reasonable surface use by the Department of Natural Resources, its Offices or Commissions, as herein above reserved.

Applicant: PETRO-LAND SERVICES, INC.

Bidder	Cash Payment	Price/Acre	Rental	Oil	Gas	Other

Legend

11060048

Active\_Leases

IMAGERY.DOQQ\_2008\_1M\_CIR

0 2,000 Feet



PLAQUEMINES PARISH

T20S - R29E

P.O.B.

SL 3212

SL 192

SL 3155

**TRACT 42105 - Plaquemines Parish, Louisiana**

All of the lands now or formerly constituting the beds and bottoms of all water bodies of every nature and description as to which title is vested in the State of Louisiana, together with all islands arising therein and other lands formed by accretion or by reliction, where allowed by law, excepting tax adjudicated lands, and not presently under mineral lease on June 8, 2011, situated in Plaquemines Parish, Louisiana, and more particularly described as follows: Beginning at a point having Coordinates of X = 2,559,746.55 and Y = 229,457.26; Thence North 00 degrees 52 minutes 40 seconds West 4,837.02 feet to a point having Coordinates of X = 2,559,672.45 and Y = 234,293.71; Thence North 88 degrees 13 minutes 45 seconds East 1,171.44 feet to a point having Coordinates of X = 2,560,843.33 and Y = 234,329.91; Thence North 88 degrees 22 minutes 14 seconds East 5,243.44 feet to a point having Coordinates of X = 2,566,084.65 and Y = 234,479.01; Thence South 00 degrees 56 minutes 19 seconds East 4,922.37 feet to a point having Coordinates of X = 2,566,165.29 and Y = 229,557.30; Thence South 89 degrees 06 minutes 25 seconds West 6,419.52 feet to the point of beginning, **LESS AND EXCEPT** that portion, if any of State Lease No. 192, as amended, being English Bay and Scofield Bay, State Lease No. 2652 and State Lease No. 3155, as amended, being water bottoms as they existed in 1957, that may lie within the above described tract containing approximately **198 acres**, all as more particularly outlined on a plat on file in the Office of Mineral Resources, Department of Natural Resources. All bearings, distances and coordinates are based on Louisiana Coordinate System of 1927, (North or South Zone), where applicable.

NOTE: The above description of the Tract nominated for lease has been provided and corrected, where required, exclusively by the nomination party. Any mineral lease selected from this Tract and awarded by the Louisiana State Mineral and Energy Board shall be without warranty of any kind, either express, implied, or statutory, including, but not limited to, the implied warranties of merchantability and fitness for a particular purpose. Should the mineral lease awarded by the Louisiana State Mineral and Energy Board be subsequently modified, cancelled or abrogated due to the existence of conflicting leases, operating agreements, private claims or other future obligations or conditions which may affect all or any portion of the leased Tract, it shall not relieve the Lessee of the obligation to pay any bonus due thereon to the Louisiana State Mineral and Energy Board, nor shall the Louisiana State Mineral and Energy Board be obligated to refund any consideration paid by the Lessor prior to such modification, cancellation, or abrogation, including, but not limited to, bonuses, rentals and royalties.

NOTE: The State of Louisiana does hereby reserve, and this lease shall be subject to, the imprescriptible right of surface use in the nature of a servitude in favor of the Department of Natural Resources, including its Offices and Commissions, for the sole purpose of implementing, constructing, servicing and maintaining approved coastal zone management

and/or restoration projects. Utilization of any and all rights derived under this lease by the mineral lessee, its agents, successors or assigns, shall not interfere with nor hinder the reasonable surface use by the Department of Natural Resources, its Offices or Commissions, as herein above reserved.

Applicant: PETRO-LAND SERVICES, INC.

Bidder	Cash Payment	Price/Acre	Rental	Oil	Gas	Other

Legend

11080049

Active\_Leases

IMAGERY.DOQQ\_2008\_1M\_CIR

0 1,980 Feet

SL 192

ENGLISH BAY

T20S - R28E

SL 3212

P.O.B.

SL 2652

CYPRIEN BAY

SL 3155

SCOFIELD BAY

- R28E

**TRACT 42106 - Plaquemines Parish, Louisiana**

All of the lands now or formerly constituting the beds and bottoms of all water bodies of every nature and description as to which title is vested in the State of Louisiana, together with all islands arising therein and other lands formed by accretion or by reliction, where allowed by law, excepting tax adjudicated lands, and not presently under mineral lease on June 8, 2011, situated in Plaquemines Parish, Louisiana, and more particularly described as follows: Beginning at a point having Coordinates of X = 2,554,563.14 and Y = 223,857.61; Thence North 00 degrees 54 minutes 55 seconds West 6,700.00 feet to a point having Coordinates of X = 2,554,456.12 and Y = 230,556.75; Thence West 1,371.91 feet to a point having Coordinates of X = 2,553,084.21 and Y = 230,556.75; Thence North approximately 3,534 feet to a point of intersection with a line which bears South 88 degrees 14 minutes 01 seconds West originating from a point having Coordinates of X = 2,559,672.45 and Y = 234,293.71; Thence North 88 degrees 14 minutes 01 seconds East approximately 6,591 feet to a point having Coordinates of X = 2,559,672.45 and Y = 234,293.71; Thence Southerly approximately 5,505 feet to a point of intersection of the most Southerly line of State Lease 2652, as amended, with the West line of State Lease 3155, as amended; Thence Southerly approximately 4,933 feet to a point having a Coordinate of Y = 223,857.61; Thence West approximately 5,269 feet to the point of beginning, **LESS AND EXCEPT** that portion, if any of State Lease No. 3155, as amended, State Lease No. 2652, as amended, and State Lease No. 2651 that may lie within the above described tract containing approximately **1,337 acres**, all as more particularly outlined on a plat on file in the Office of Mineral Resources, Department of Natural Resources. All bearings, distances and coordinates are based on Louisiana Coordinate System of 1927, (North or South Zone), where applicable.

NOTE: The above description of the Tract nominated for lease has been provided and corrected, where required, exclusively by the nomination party. Any mineral lease selected from this Tract and awarded by the Louisiana State Mineral and Energy Board shall be without warranty of any kind, either express, implied, or statutory, including, but not limited to, the implied warranties of merchantability and fitness for a particular purpose. Should the mineral lease awarded by the Louisiana State Mineral and Energy Board be subsequently modified, cancelled or abrogated due to the existence of conflicting leases, operating agreements, private claims or other future obligations or conditions which may affect all or any portion of the leased Tract, it shall not relieve the Lessee of the obligation to pay any bonus due thereon to the Louisiana State Mineral and Energy Board, nor shall the Louisiana State Mineral and Energy Board be obligated to refund any consideration paid by the Lessor prior to such modification, cancellation, or abrogation, including, but not limited to, bonuses, rentals and royalties.

NOTE: The State of Louisiana does hereby reserve, and this lease shall be subject to, the imprescriptible right of surface use in the nature of a servitude in favor of the Department of Natural Resources, including its



Offices and Commissions, for the sole purpose of implementing, constructing, servicing and maintaining approved coastal zone management and/or restoration projects. Utilization of any and all rights derived under this lease by the mineral lessee, its agents, successors or assigns, shall not interfere with nor hinder the reasonable surface use by the Department of Natural Resources, its Offices or Commissions, as herein above reserved.

Applicant: PETRO-LAND SERVICES, INC.

Bidder	Cash Payment	Price/Acre	Rental	Oil	Gas	Other

Legend

11060047

Active\_Leases

IMAGERY.DOQQ\_2008\_1M\_CIR

PLAQUEMINES PARISH

CYPRIEN BAY

SL 3155

ENGLISH BAY

P.O.B.

SL 2652

T21S - R28E

0 2,000 Feet



**TRACT 42107 - Portion of Blocks 116, and 117, South Timbalier Area, Revised, Terrebonne Parish, Louisiana**

All of the lands now or formerly constituting the beds and bottoms of all water bodies of every nature and description as to which title is vested in the State of Louisiana, together with all islands arising therein and other lands formed by accretion or by reliction, where allowed by law, excepting tax adjudicated lands, and not presently under mineral lease on June 8, 2011, situated in Terrebonne Parish, Louisiana, and more particularly described as follows: Beginning at a point within Block 117, South Timbalier Area, Revised, having Coordinates of X = 2,243,584.76 and Y = 172,245.48; thence North 5,990.88 feet to a point having Coordinates of X = 2,243,584.76 and Y = 178,236.36; thence East 10,223.28 feet to a point on the East line of said Block 117, also being the West line of Block 116, South Timbalier Area, Revised, having Coordinates of X = 2,253,808.04 and Y = 178,236.36; thence East 8,256.71 feet to a point on the East line of said Block 116 having Coordinates of X = 2,262,064.75 and Y = 178,236.36; thence South 00 degrees 24 minutes 55 seconds East 1,917.68 feet along the East line of said Block 116 to the Northwest corner of State Lease No. 301, as amended, also being the Northeast corner of State Lease No. 1247, as amended, having Coordinates of X = 2,262,078.65 and Y = 176,318.73; thence along the boundary of said State Lease No. 1247 the following courses: West 470.61 feet to a point having Coordinates of X = 2,261,608.04 and Y = 176,318.73; South 1,223.25 feet to a point having Coordinates of X = 2,261,608.04 and Y = 175,095.48; West 3,400.00 feet to a point having Coordinates of X = 2,258,208.04 and Y = 175,095.48; South 200.00 feet to a point having Coordinates of X = 2,258,208.04 and Y = 174,895.48; West 4,050.00 feet to a point having Coordinates of X = 2,254,158.04 and Y = 174,895.48; South 2,650.00 feet to a point having Coordinates of X = 2,254,158.04 and Y = 172,245.48 and West 350.00 feet to its Westernmost Northwest corner having Coordinates of X = 2,253,808.04 and Y = 172,245.48; thence West 10,223.28 feet to the point of beginning, **LESS AND EXCEPT** that portion, if any, of State Lease No. 301, as amended, which may lie within the above described tract, containing approximately **2,030.35 acres**, all as more particularly outlined on a plat on file in the Office of Mineral Resources, Department of Natural Resources. All bearings, distances and coordinates are based on Louisiana Coordinate System of 1927, (North or South Zone), where applicable.

NOTE: The above description of the Tract nominated for lease has been provided and corrected, where required, exclusively by the nomination party. Any mineral lease selected from this Tract and awarded by the Louisiana State Mineral and Energy Board shall be without warranty of any kind, either express, implied, or statutory, including, but not limited to, the implied warranties of merchantability and fitness for a particular purpose. Should the mineral lease awarded by the Louisiana State Mineral and Energy Board be subsequently modified, cancelled or abrogated due to the existence of conflicting leases, operating agreements, private claims or other future obligations or conditions which may affect all or any

portion of the leased Tract, it shall not relieve the Lessee of the obligation to pay any bonus due thereon to the Louisiana State Mineral and Energy Board, nor shall the Louisiana State Mineral and Energy Board be obligated to refund any consideration paid by the Lessor prior to such modification, cancellation, or abrogation, including, but not limited to, bonuses, rentals and royalties.

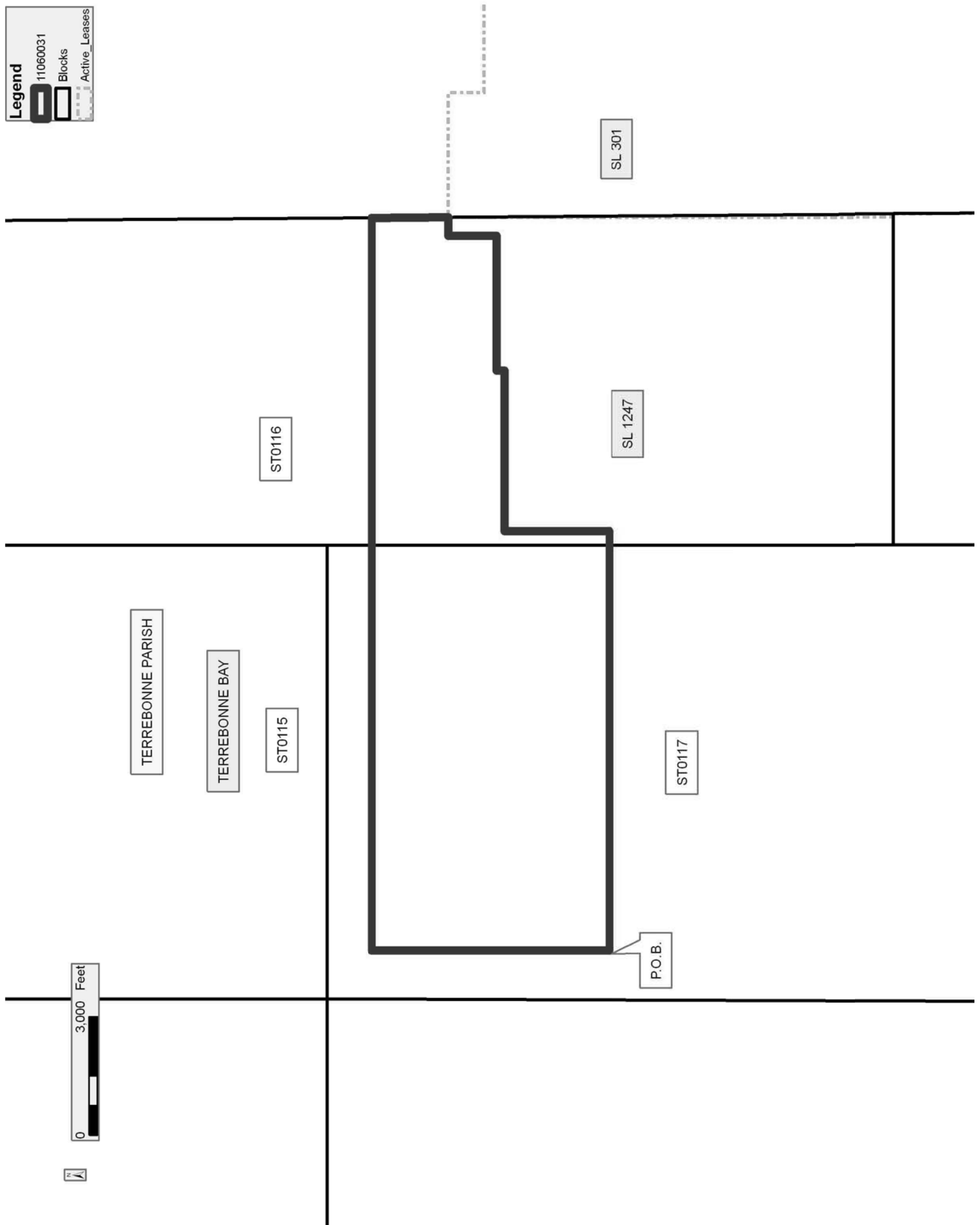
NOTE: The State of Louisiana does hereby reserve, and this lease shall be subject to, the imprescriptible right of surface use in the nature of a servitude in favor of the Department of Natural Resources, including its Offices and Commissions, for the sole purpose of implementing, constructing, servicing and maintaining approved coastal zone management and/or restoration projects. Utilization of any and all rights derived under this lease by the mineral lessee, its agents, successors or assigns, shall not interfere with nor hinder the reasonable surface use by the Department of Natural Resources, its Offices or Commissions, as herein above reserved.

Applicant: LAND MANAGEMENT SERVICES, L.L.C.

Bidder	Cash Payment	Price/Acre	Rental	Oil	Gas	Other

**Legend**

- 11060031
- Blocks
- Active Leases



**TRACT 42108 - Portion of Blocks 117, and 118, South Timbalier Area, Revised, Terrebonne Parish, Louisiana**

All of the lands now or formerly constituting the beds and bottoms of all water bodies of every nature and description as to which title is vested in the State of Louisiana, together with all islands arising therein and other lands formed by accretion or by reliction, where allowed by law, excepting tax adjudicated lands, and not presently under mineral lease on June 8, 2011, situated in Terrebonne Parish, Louisiana, and more particularly described as follows: Beginning at a point within Block 118, South Timbalier Area, Revised, having Coordinates of X = 2,241,084.02 and Y = 172,245.48; thence East 1,205.86 feet to a point on the East line of said Block 118, also being the West line of Block 117, South Timbalier Area, Revised, having Coordinates of X = 2,242,289.88 and Y = 172,245.48; thence East 11,518.16 feet to the Westernmost Northwest corner of State Lease No. 1247, as amended, having Coordinates of X = 2,253,808.04 and Y = 172,245.48; thence South 2,167.79 feet along the Western boundary of said State Lease No. 1247 to the Northeast corner of State Lease No. 2856, as amended, having Coordinates of X = 2,253,808.04 and Y = 170,077.69; thence along the boundary of said State Lease No. 2856 the following courses: West 2,249.00 feet to a point having Coordinates of X = 2,251,559.04 and Y = 170,077.69; South 3,050.00 feet to a point having Coordinates of X = 2,251,559.04 and Y = 167,027.69 and West 2,250.00 feet to its Westernmost Northwest corner having Coordinates of X = 2,249,309.04 and Y = 167,027.69; thence West 7,019.16 feet to a point on the West line of said Block 117, also being the East line of said Block 118 having Coordinates of X = 2,242,289.88 and Y = 167,027.69; thence West 1,205.86 feet to a point having Coordinates of X = 2,241,084.02 and Y = 167,027.69; thence North 5,217.79 feet to the point of beginning, containing approximately **1,366.66 acres**, all as more particularly outlined on a plat on file in the Office of Mineral Resources, Department of Natural Resources. All bearings, distances and coordinates are based on Louisiana Coordinate System of 1927, (North or South Zone), where applicable.

NOTE: The above description of the Tract nominated for lease has been provided and corrected, where required, exclusively by the nomination party. Any mineral lease selected from this Tract and awarded by the Louisiana State Mineral and Energy Board shall be without warranty of any kind, either express, implied, or statutory, including, but not limited to, the implied warranties of merchantability and fitness for a particular purpose. Should the mineral lease awarded by the Louisiana State Mineral and Energy Board be subsequently modified, cancelled or abrogated due to the existence of conflicting leases, operating agreements, private claims or other future obligations or conditions which may affect all or any portion of the leased Tract, it shall not relieve the Lessee of the obligation to pay any bonus due thereon to the Louisiana State Mineral and Energy Board, nor shall the Louisiana State Mineral and Energy Board be obligated to refund any consideration paid by the Lessor prior to such modification, cancellation, or abrogation, including, but not limited to, bonuses, rentals and royalties.

NOTE: The State of Louisiana does hereby reserve, and this lease shall be subject to, the imprescriptible right of surface use in the nature of a servitude in favor of the Department of Natural Resources, including its Offices and Commissions, for the sole purpose of implementing, constructing, servicing and maintaining approved coastal zone management and/or restoration projects. Utilization of any and all rights derived under this lease by the mineral lessee, its agents, successors or assigns, shall not interfere with nor hinder the reasonable surface use by the Department of Natural Resources, its Offices or Commissions, as herein above reserved.

NOTE: It appears, according to our records, that a portion of this Tract is located within the restrictive safety fairway area as set out by the Corps of Engineers, U.S. Army and/or the restrictive anchorage area as set out by the U.S. Coast Guard.

Applicant: LAND MANAGEMENT SERVICES, L.L.C.

Bidder	Cash Payment	Price/Acre	Rental	Oil	Gas	Other

**Legend**

-  11060032
-  Blocks
-  Active Leases

TERREBONNE PARISH

TERREBONNE BAY

ST0117

SOUTH TIMBALIER AREA, REVISED

P.O.B.

ST0118

ST0116

SL 1247

SL 2856

ST0122





**TRACT 42109 - Portion of Blocks 117, 118, 120, and 121, South Timbalier Area, Revised, Terrebonne Parish, Louisiana**

All of the lands now or formerly constituting the beds and bottoms of all water bodies of every nature and description as to which title is vested in the State of Louisiana, together with all islands arising therein and other lands formed by accretion or by reliction, where allowed by law, excepting tax adjudicated lands, and not presently under mineral lease on June 8, 2011, situated in Terrebonne Parish, Louisiana, and more particularly described as follows: Beginning at a point within Block 120, South Timbalier Area, Revised, having Coordinates of X = 2,241,084.02 and Y = 157,720.60; thence North 2,742.20 feet to a point on the North line of said Block 120, also being the South line of Block 118, South Timbalier Area, Revised having Coordinates of X = 2,241,084.02 and Y = 160,462.80; thence North 6,564.89 feet to a point having Coordinates of X = 2,241,084.02 and Y = 167,027.69; thence East 1,205.86 feet to a point on the East line of said Block 118, also being the West line of Block 117, South Timbalier Area, Revised, having Coordinates of X = 2,242,289.88 and Y = 167,027.69; thence East 7,019.16 feet to the Westernmost Northwest corner of State Lease No. 2856, as amended, having Coordinates of X = 2,249,309.04 and Y = 167,027.69; thence along the boundary of said State Lease No. 2856 the following courses: South 3,750.00 feet to a point having Coordinates of X = 2,249,309.04 and Y = 163,277.69; East 450.00 feet to a point having Coordinates of X = 2,249,759.04 and Y = 163,277.69; South 2,814.89 feet to a point having Coordinates of X = 2,249,759.04 and Y = 160,462.80 and East 2,752.27 feet to a point on its South boundary, also being the Northwest corner of State Lease No. 2857 having Coordinates of X = 2,252,511.31 and Y = 160,462.80; thence along the boundary of said State Lease No. 2857 the following courses: South 06 degrees 13 minutes 17 seconds West 1,119.39 feet to a point having Coordinates of X = 2,252,390.00 and Y = 159,350.00; South 03 degrees 48 minutes 50 seconds East 451.00 feet to a point having Coordinates of X = 2,252,420.00 and Y = 158,900.00; South 08 degrees 44 minutes 46 seconds East 328.82 feet to a point having Coordinates X = 2,252,470.00 and Y = 158,575.00 and South 13 degrees 41 minutes 33 seconds East 879.40 feet to a point on its Western boundary, also being a point within Block 121, South Timbalier Area, Revised, having Coordinates of X = 2,252,678.16 and Y = 157,720.60; thence West 10,388.28 feet to a point on the West line of said Block 121, also being the East line of said Block 120 having Coordinates of X = 2,242,289.88 and Y = 157,720.60; thence West 1,205.86 feet to the point of beginning, containing approximately **1,986.13 acres**, all as more particularly outlined on a plat on file in the Office of Mineral Resources, Department of Natural Resources. All bearings, distances and coordinates are based on Louisiana Coordinate System of 1927, (North or South Zone), where applicable.

NOTE: The above description of the Tract nominated for lease has been provided and corrected, where required, exclusively by the nomination party. Any mineral lease selected from this Tract and awarded by the Louisiana State Mineral and Energy Board shall be without warranty of any

kind, either express, implied, or statutory, including, but not limited to, the implied warranties of merchantability and fitness for a particular purpose. Should the mineral lease awarded by the Louisiana State Mineral and Energy Board be subsequently modified, cancelled or abrogated due to the existence of conflicting leases, operating agreements, private claims or other future obligations or conditions which may affect all or any portion of the leased Tract, it shall not relieve the Lessee of the obligation to pay any bonus due thereon to the Louisiana State Mineral and Energy Board, nor shall the Louisiana State Mineral and Energy Board be obligated to refund any consideration paid by the Lessor prior to such modification, cancellation, or abrogation, including, but not limited to, bonuses, rentals and royalties.

NOTE: The State of Louisiana does hereby reserve, and this lease shall be subject to, the imprescriptible right of surface use in the nature of a servitude in favor of the Department of Natural Resources, including its Offices and Commissions, for the sole purpose of implementing, constructing, servicing and maintaining approved coastal zone management and/or restoration projects. Utilization of any and all rights derived under this lease by the mineral lessee, its agents, successors or assigns, shall not interfere with nor hinder the reasonable surface use by the Department of Natural Resources, its Offices or Commissions, as herein above reserved.

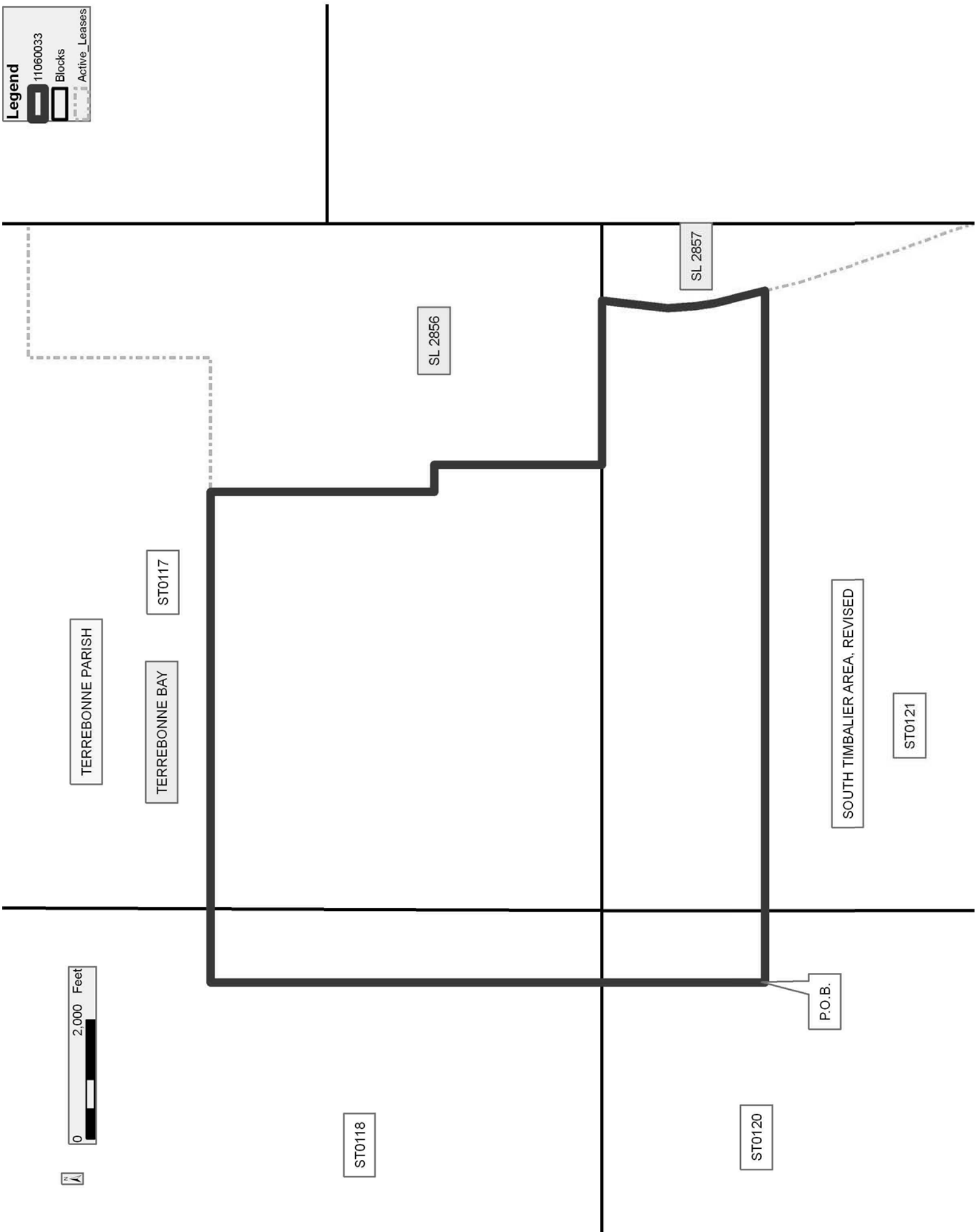
NOTE: It appears, according to our records, that a portion of this Tract is located within the restrictive safety fairway area as set out by the Corps of Engineers, U.S. Army and/or the restrictive anchorage area as set out by the U.S. Coast Guard.

Applicant: LAND MANAGEMENT SERVICES, L.L.C.

Bidder	Cash Payment	Price/Acre	Rental	Oil	Gas	Other

**Legend**

- 11060033
- Blocks
- Active\_Leases



**TRACT 42110 - Portion of Blocks 120, 121, and 122, South Timbalier Area, Revised, Terrebonne Parish, Louisiana**

All of the lands now or formerly constituting the beds and bottoms of all water bodies of every nature and description as to which title is vested in the State of Louisiana, together with all islands arising therein and other lands formed by accretion or by reliction, where allowed by law, excepting tax adjudicated lands, and not presently under mineral lease on June 8, 2011, situated in Terrebonne Parish, Louisiana, and more particularly described as follows: Beginning at a point within Block 120, South Timbalier Area, Revised, having Coordinates of X = 2,241,084.02 and Y = 157,720.60; thence East 1,205.86 feet to a point on the East line of said Block 120, also being the West line of Block 121, South Timbalier Area, Revised, having Coordinates of X = 2,242,289.88 and Y = 157,720.60; thence East 10,388.28 feet to a point on the Western boundary of State Lease No. 2857, as amended, having Coordinates of X = 2,252,678.16 and Y = 157,720.60; thence along the boundary of said State Lease No. 2857 the following courses: South 13 degrees 41 minutes 33 seconds East 535.82 feet to a point having Coordinates of X = 2,252,805.00 and Y = 157,200.00; South 17 degrees 42 minutes 12 seconds East 1,857.99 feet to a point having Coordinates of X = 2,253,370.00 and Y = 155,430.00; South 20 degrees 20 minutes 38 seconds East 949.21 feet to a point having Coordinates of X = 2,253,700.00 and Y = 154,540.00 and South 15 degrees 47 minutes 40 seconds East 396.93 feet to the Southernmost corner of said State Lease No. 2857, also being a point on the Western boundary of State Lease No. 1249, as amended, having Coordinates of X = 2,253,808.04 and Y = 154,158.06; thence along the boundary of said State Lease No. 1249 the following courses: South 119.64 feet to a point having Coordinates of X = 2,253,808.04 and Y = 154,038.42; East 20.42 feet to a point having Coordinates of X = 2,253,828.46 and Y = 154,038.42 and South 09 degrees 41 minutes 15 seconds East 810.35 feet to a point on the Louisiana Coastline, as decreed by the Supreme Court of the United States, as determined by a Special Master appointed therein, in litigation styled *United States v. State of Louisiana et al No. 9 Original*, in 1975, having Coordinates of X = 2,253,964.83 and Y = 153,239.62; thence along said Louisiana Coastline the following: Northwesterly on a straight line to a point on the West line of Block 122, South Timbalier Area, Revised, also being the East line of said Block 121 having Coordinates of X = 2,253,808.04 and Y = 153,444.85; Northwesterly on a straight line to a point having Coordinates of X = 2,253,306 and Y = 154,102; Southwesterly on a straight line to a point on the West line of said Block 121, also being the East line of said Block 120 having Coordinates of X = 2,242,289.88 and Y = 151,413.40 and Southwesterly on a straight line to a point having Coordinates of X = 2,241,084.02 and Y = 151,119.09; thence North 6,601.50 feet to the point of beginning, containing approximately **1,432.44 acres**, all as more particularly outlined on a plat on file in the Office of Mineral Resources, Department of Natural Resources. All bearings, distances and coordinates are based on Louisiana Coordinate System of 1927, (North or South Zone), where applicable.

NOTE: The above description of the Tract nominated for lease has been provided and corrected, where required, exclusively by the nomination party. Any mineral lease selected from this Tract and awarded by the Louisiana State Mineral and Energy Board shall be without warranty of any kind, either express, implied, or statutory, including, but not limited to, the implied warranties of merchantability and fitness for a particular purpose. Should the mineral lease awarded by the Louisiana State Mineral and Energy Board be subsequently modified, cancelled or abrogated due to the existence of conflicting leases, operating agreements, private claims or other future obligations or conditions which may affect all or any portion of the leased Tract, it shall not relieve the Lessee of the obligation to pay any bonus due thereon to the Louisiana State Mineral and Energy Board, nor shall the Louisiana State Mineral and Energy Board be obligated to refund any consideration paid by the Lessor prior to such modification, cancellation, or abrogation, including, but not limited to, bonuses, rentals and royalties.

NOTE: The State of Louisiana does hereby reserve, and this lease shall be subject to, the imprescriptible right of surface use in the nature of a servitude in favor of the Department of Natural Resources, including its Offices and Commissions, for the sole purpose of implementing, constructing, servicing and maintaining approved coastal zone management and/or restoration projects. Utilization of any and all rights derived under this lease by the mineral lessee, its agents, successors or assigns, shall not interfere with nor hinder the reasonable surface use by the Department of Natural Resources, its Offices or Commissions, as herein above reserved.

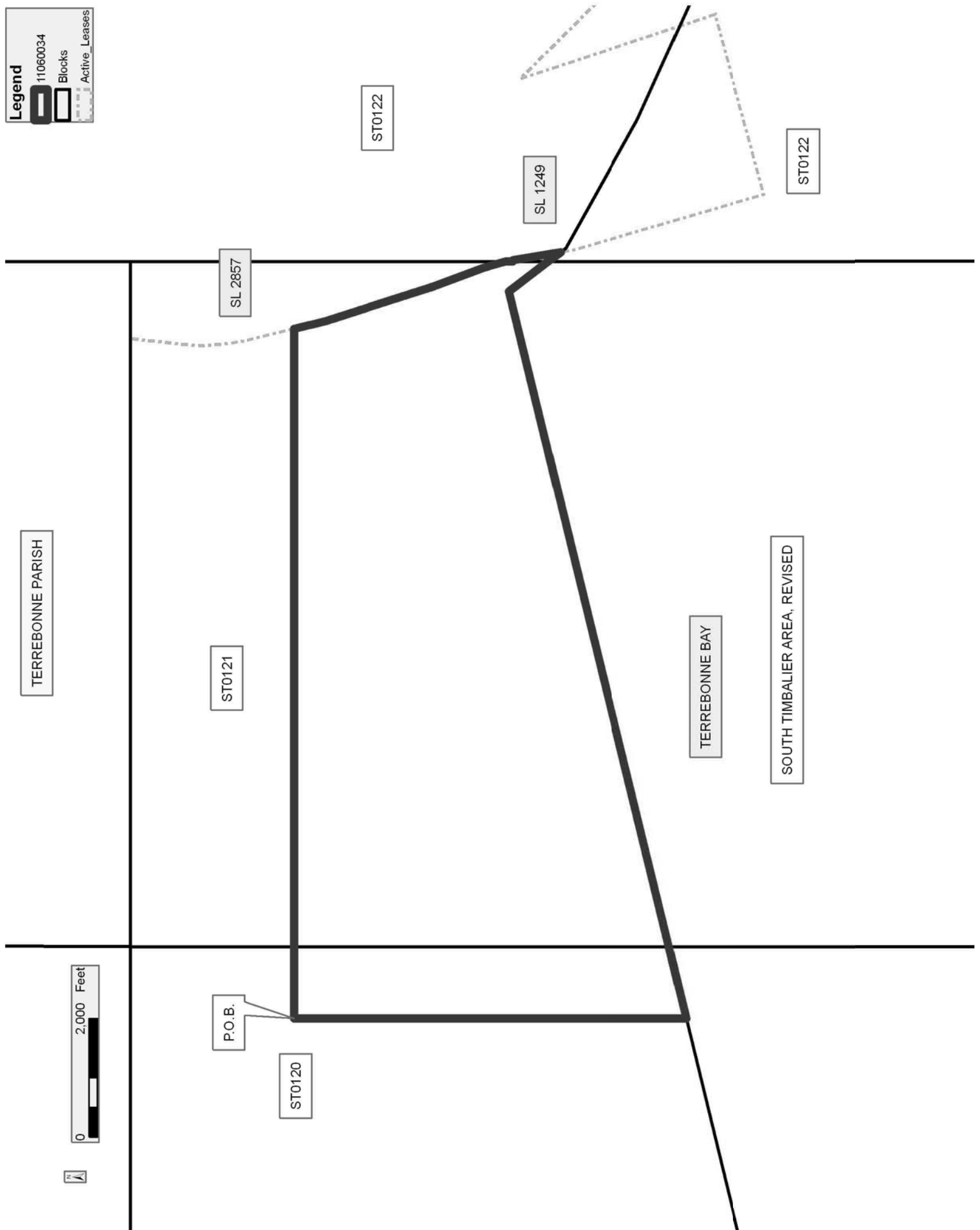
NOTE: It appears, according to our records, that a portion of this Tract is located within the restrictive safety fairway area as set out by the Corps of Engineers, U.S. Army and/or the restrictive anchorage area as set out by the U.S. Coast Guard.

Applicant: LAND MANAGEMENT SERVICES, L.L.C.

Bidder	Cash Payment	Price/Acre	Rental	Oil	Gas	Other

**Legend**

-  11060034
-  Blocks
-  Active\_Leases



TERREBONNE PARISH

ST0121

ST0122

SL 2857

SL 1249

ST0122

P.O.B.

ST0120

TERREBONNE BAY

SOUTH TIMBALIER AREA, REVISED