

TRACT 42780 - Portion of Blocks 16, 17, 6, and 7, South Pass Area, Plaquemines Parish, Louisiana

The beds and bottoms of all water bodies belonging to the State of Louisiana located in Blocks 16, 17, 6, and 7, South Pass Area, together with any present lands formed by accretion to the shoreline or islands formed therein, located in Plaquemines Parish, Louisiana, owned by and not presently under mineral lease as of August 8, 2012, from the State of Louisiana, the geographical area of which is more fully described as follows: Beginning at a point lying within Block 6, South Pass Area having Coordinates of X = 2,737,363.58 and Y = 162,286.07; thence South 9,786.07 feet to a point lying within Block 17, of said South Pass Area, having Coordinates of X = 2,737,363.58 and Y = 152,500.00; thence West 8,143.98 feet to a point on the East boundary of the Pass-A- Loutre Wildlife Management Area, said point lying within Block 16, of said South Pass Area, having Coordinates of X = 2,729,219.60 and Y = 152,500.00; thence North 27 degrees 15 minutes 54 seconds East 10,906.94 feet along the East boundary of the said Pass-A-Loutre Wildlife Management Area to a point lying within Block 7, of said South Pass Area, having Coordinates of X = 2,734,216.12 and Y = 162,195.16; thence North 88 degrees 20 minutes 44 seconds East 3,148.78 feet to the point of beginning, containing approximately **1,259.85 acres**, all as more particularly outlined on a plat on file in the Office of Mineral Resources, Department of Natural Resources. All bearings, distances and coordinates are based on Louisiana Coordinate System of 1927, (North or South Zone).

NOTE: The above description of the Tract nominated for lease has been provided and corrected, where required, exclusively by the nomination party. Any mineral lease selected from this Tract and awarded by the Louisiana State Mineral and Energy Board shall be without warranty of any kind, either express, implied, or statutory, including, but not limited to, the implied warranties of merchantability and fitness for a particular purpose. Should the mineral lease awarded by the Louisiana State Mineral and Energy Board be subsequently modified, cancelled or abrogated due to the existence of conflicting leases, operating agreements, private claims or other future obligations or conditions which may affect all or any portion of the leased Tract, it shall not relieve the Lessee of the obligation to pay any bonus due thereon to the Louisiana State Mineral and Energy Board, nor shall the Louisiana State Mineral and Energy Board be obligated to refund any consideration paid by the Lessor prior to such modification, cancellation, or abrogation, including, but not limited to, bonuses, rentals and royalties.

NOTE: The State of Louisiana does hereby reserve, and this lease shall be subject to, the imprescriptible right of surface use in the nature of a servitude in favor of the Department of Natural Resources, including its Offices and Commissions, for the sole purpose of implementing, constructing, servicing and maintaining approved coastal zone management and/or restoration projects. Utilization of any and all rights derived under this lease by the mineral lessee, its agents, successors or assigns,

shall not interfere with nor hinder the reasonable surface use by the Department of Natural Resources, its Offices or Commissions, as herein above reserved.

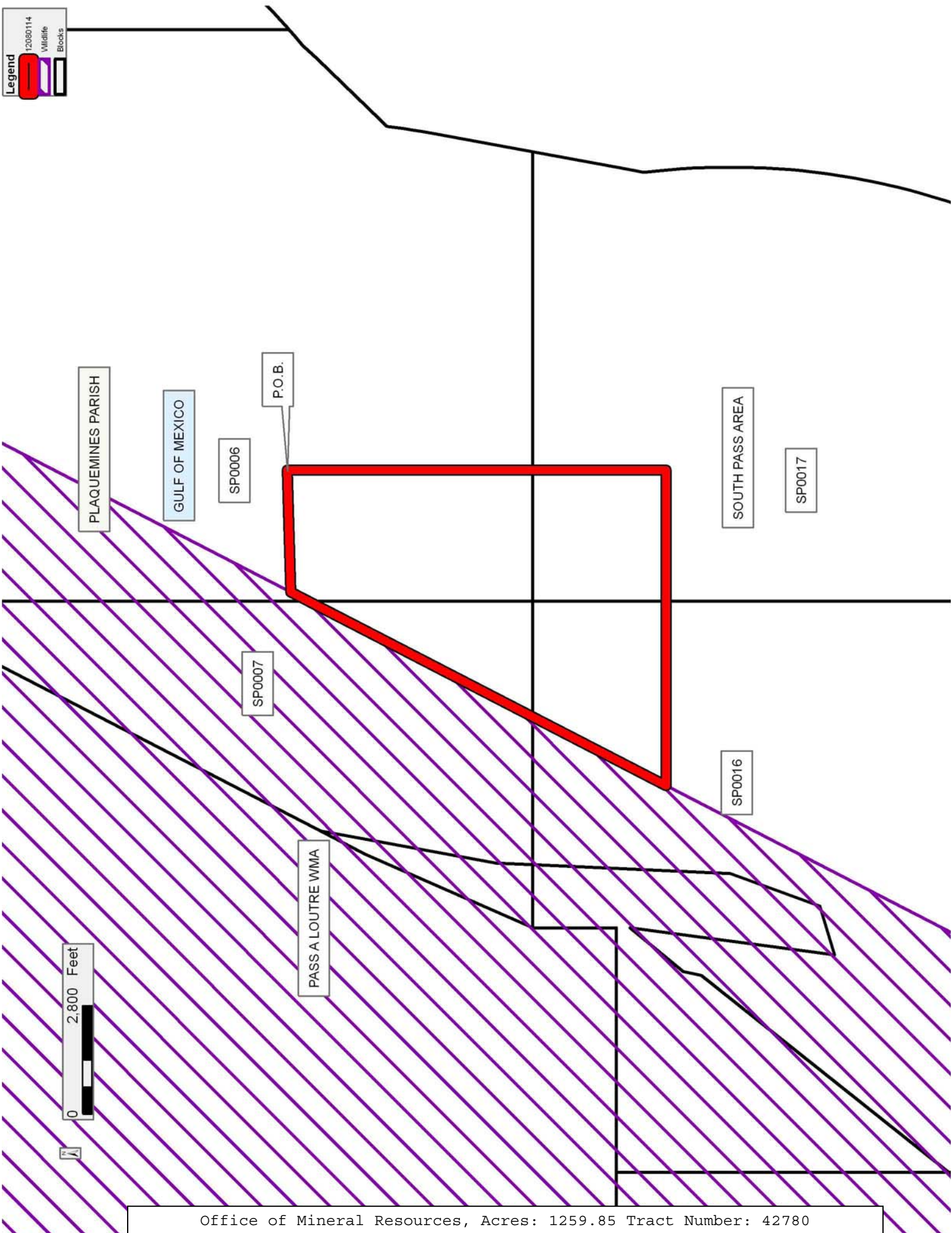
NOTE: It appears, according to our records, that a portion of this Tract is located within the restrictive safety fairway area as set out by the Corps of Engineers, U.S. Army and/or the restrictive anchorage area as set out by the U.S. Coast Guard.

Applicant: THEOPHILUS OIL, GAS & LAND SERVICES, LLC

Bidder	Cash Payment	Price/Acre	Rental	Oil	Gas	Other

Legend

12080114
Wildlife
Blocks



TRACT 42781 - Portion of Blocks 16, and 17, South Pass Area, Plaquemines Parish, Louisiana

The beds and bottoms of all water bodies belonging to the State of Louisiana located in Blocks 16, and 17, South Pass Area, together with any present lands formed by accretion to the shoreline or islands formed therein, located in Plaquemines Parish, Louisiana, owned by and not presently under mineral lease as of August 8, 2012, from the State of Louisiana, the geographical area of which is more fully described as follows: Beginning at a point lying within Block 17, South Pass Area having Coordinates of X = 2,737,363.58 and Y = 152,500.00; thence South 10,000.00 feet to a point having Coordinates of X = 2,737,363.58 and Y = 142,500.00; thence West 13,297.60 feet to a point on the East boundary of the Pass-A-Loutre Wildlife Management Area, said point lying within Block 16, of said South Pass Area, having Coordinates of X = 2,724,065.98 and Y = 142,500.00; thence North 27 degrees 15 minutes 54 seconds East 11,249.88 feet along the East boundary of the said Pass-A-Loutre Wildlife Management Area to a point having Coordinates of X = 2,729,219.60 and Y = 152,500.00; thence East 8,143.98 feet to the point of beginning, containing approximately **2,461.16 acres**, all as more particularly outlined on a plat on file in the Office of Mineral Resources, Department of Natural Resources. All bearings, distances and coordinates are based on Louisiana Coordinate System of 1927, (North or South Zone).

NOTE: The above description of the Tract nominated for lease has been provided and corrected, where required, exclusively by the nomination party. Any mineral lease selected from this Tract and awarded by the Louisiana State Mineral and Energy Board shall be without warranty of any kind, either express, implied, or statutory, including, but not limited to, the implied warranties of merchantability and fitness for a particular purpose. Should the mineral lease awarded by the Louisiana State Mineral and Energy Board be subsequently modified, cancelled or abrogated due to the existence of conflicting leases, operating agreements, private claims or other future obligations or conditions which may affect all or any portion of the leased Tract, it shall not relieve the Lessee of the obligation to pay any bonus due thereon to the Louisiana State Mineral and Energy Board, nor shall the Louisiana State Mineral and Energy Board be obligated to refund any consideration paid by the Lessor prior to such modification, cancellation, or abrogation, including, but not limited to, bonuses, rentals and royalties.

NOTE: The State of Louisiana does hereby reserve, and this lease shall be subject to, the imprescriptible right of surface use in the nature of a servitude in favor of the Department of Natural Resources, including its Offices and Commissions, for the sole purpose of implementing, constructing, servicing and maintaining approved coastal zone management and/or restoration projects. Utilization of any and all rights derived under this lease by the mineral lessee, its agents, successors or assigns, shall not interfere with nor hinder the reasonable surface use by the

Department of Natural Resources, its Offices or Commissions, as herein above reserved.

NOTE: It appears, according to our records, that a portion of this Tract is located within the restrictive safety fairway area as set out by the Corps of Engineers, U.S. Army and/or the restrictive anchorage area as set out by the U.S. Coast Guard.

Applicant: THEOPHILUS OIL, GAS & LAND SERVICES, LLC

Bidder	Cash Payment	Price/Acre	Rental	Oil	Gas	Other

Legend

- 12080115 Wildlife
- Blocks

