

TRACT 42782 - Caddo Parish, Louisiana

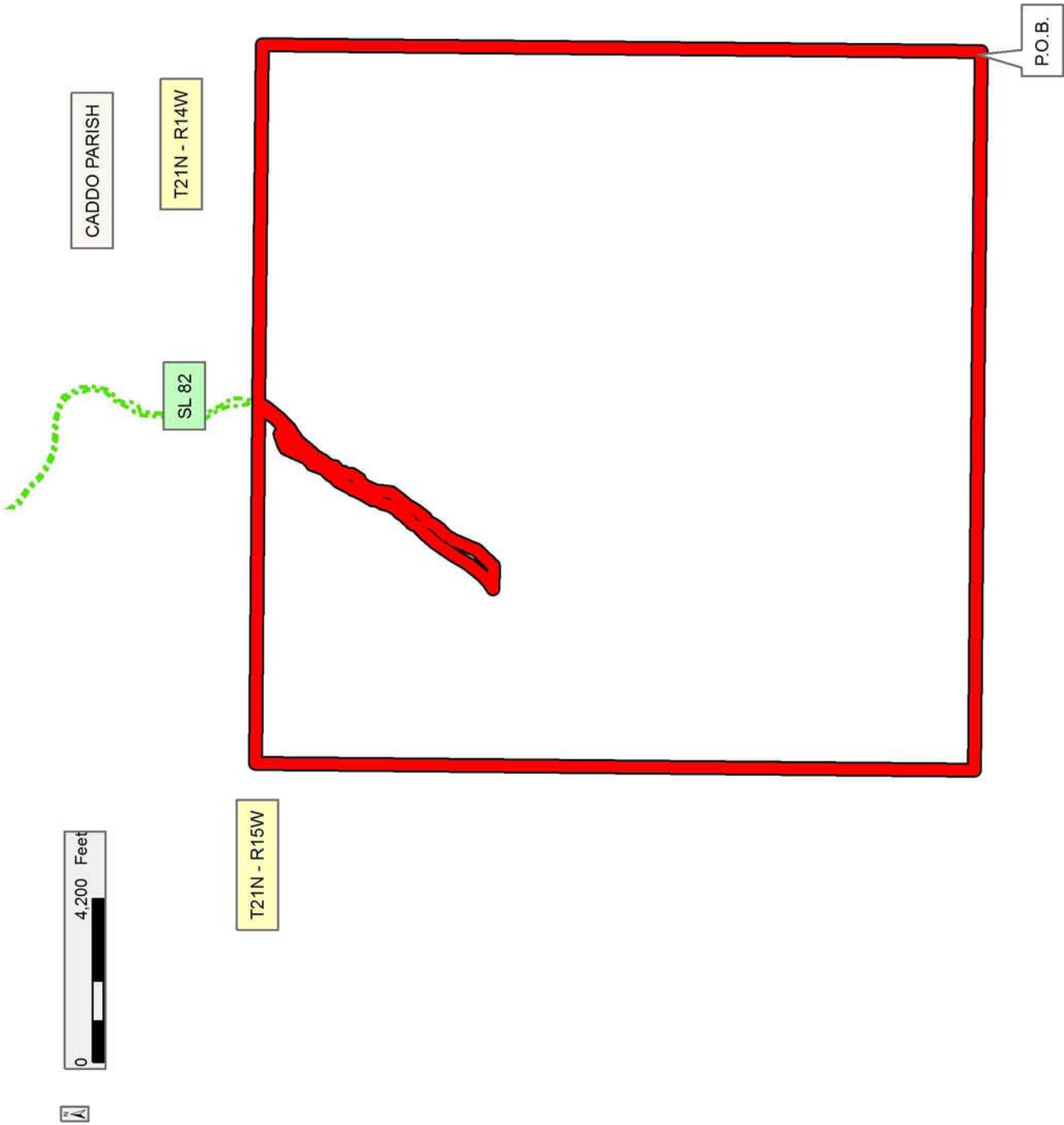
All of the lands now or formerly constituting the beds and bottoms of all water bodies of every nature and description as to which title is vested in the State of Louisiana, together with all islands arising therein and other lands formed by accretion or by reliction, where allowed by law, excepting tax adjudicated lands, and not presently under mineral lease on August 8, 2012, situated in Caddo Parish, Louisiana, and more particularly described as follows: Beginning at a point having Coordinates of X = 1,588,180.00 and Y = 762,520.00; thence West 18,480.00 feet to a point having Coordinates of X = 1,569,700.00 and Y = 762,520.00; thence North 18,480.00 feet to a point having Coordinates of X = 1,569,700.00 and Y = 781,000.00; thence East approximately 9,159 feet to a point on the Western boundary of State Lease No. 82, as amended; thence along the boundary of said State Lease No. 82, as amended, the following courses: Southwesterly approximately 8,647 feet to a point; Easterly approximately 583 feet to a point; and Northeasterly approximately 7,589 feet to a point on an East West line having a Coordinate of Y = 781,000.00; thence East approximately 9,231 feet to a point having Coordinates of X = 1,588,180.00 and Y = 781,000.00; thence South 18,480.00 feet to the point of beginning, **LESS AND EXCEPT** that portion, if any, of State Lease No. 82, as amended, which may lie within the above described tract, containing approximately **72 acres**, all as more particularly outlined on a plat on file in the Office of Mineral Resources, Department of Natural Resources. All bearings, distances and coordinates are based on Louisiana Coordinate System of 1927, (North or South Zone), where applicable.

NOTE: The above description of the Tract nominated for lease has been provided and corrected, where required, exclusively by the nomination party. Any mineral lease selected from this Tract and awarded by the Louisiana State Mineral and Energy Board shall be without warranty of any kind, either express, implied, or statutory, including, but not limited to, the implied warranties of merchantability and fitness for a particular purpose. Should the mineral lease awarded by the Louisiana State Mineral and Energy Board be subsequently modified, cancelled or abrogated due to the existence of conflicting leases, operating agreements, private claims or other future obligations or conditions which may affect all or any portion of the leased Tract, it shall not relieve the Lessee of the obligation to pay any bonus due thereon to the Louisiana State Mineral and Energy Board, nor shall the Louisiana State Mineral and Energy Board be obligated to refund any consideration paid by the Lessor prior to such modification, cancellation, or abrogation, including, but not limited to, bonuses, rentals and royalties.

Bidder	Cash Payment	Price/Acre	Rental	Oil	Gas	Other

Applicant: HEP ENERGY, INC.

Legend
20/00015
Active_Leases
IMAGERY.DOOQ_2004_1M



TRACT 42783 - Bossier and Caddo Parishes, Louisiana

All of the lands now or formerly constituting the beds and bottoms of all water bodies of every nature and description as to which title is vested in the State of Louisiana, together with all islands arising therein and other lands formed by accretion or by reliction, where allowed by law, excepting tax adjudicated lands, and not presently under mineral lease on August 8, 2012, situated in Bossier and Caddo Parishes, Louisiana, and more particularly described as follows: Beginning at a point having Coordinates of X = 1,588,180.00 and Y = 762,520.00; thence North 18,480.00 feet to a point having Coordinates of X = 1,588,180.00 and Y = 781,000.00; thence East 18,480.00 feet to a point having Coordinates of X = 1,606,660.00 and Y = 781,000.00; thence South 18,480.00 feet to a point having Coordinates of X = 1,606,660.00 and Y = 762,520.00; thence West 18,480.00 feet to the Point of Beginning, containing approximately **422 acres**, all as more particularly outlined on a plat on file in the Office of Mineral Resources, Department of Natural Resources. All bearings, distances and coordinates are based on Louisiana Coordinate System of 1927, (North or South Zone), where applicable.

NOTE: The above description of the Tract nominated for lease has been provided and corrected, where required, exclusively by the nomination party. Any mineral lease selected from this Tract and awarded by the Louisiana State Mineral and Energy Board shall be without warranty of any kind, either express, implied, or statutory, including, but not limited to, the implied warranties of merchantability and fitness for a particular purpose. Should the mineral lease awarded by the Louisiana State Mineral and Energy Board be subsequently modified, cancelled or abrogated due to the existence of conflicting leases, operating agreements, private claims or other future obligations or conditions which may affect all or any portion of the leased Tract, it shall not relieve the Lessee of the obligation to pay any bonus due thereon to the Louisiana State Mineral and Energy Board, nor shall the Louisiana State Mineral and Energy Board be obligated to refund any consideration paid by the Lessor prior to such modification, cancellation, or abrogation, including, but not limited to, bonuses, rentals and royalties.

Applicant: HEP ENERGY, INC.

Bidder	Cash Payment	Price/Acre	Rental	Oil	Gas	Other

Legend

12080016

Counties

IMAGERY.DOQQ_2004_1M

RED RIVER

CADDO PARISH

BOSSIER PARISH

T21N - R14W

T20N - R14W

P.O.B.

0 4,200 Feet

TRACT 42784 - Caddo Parish, Louisiana

All of the lands now or formerly constituting the beds and bottoms of all water bodies of every nature and description as to which title is vested in the State of Louisiana, together with all islands arising therein and other lands formed by accretion or by reliction, where allowed by law, excepting tax adjudicated lands, and not presently under mineral lease on August 8, 2012, situated in Caddo Parish, Louisiana, and more particularly described as follows: Beginning at a point having Coordinates of X = 1,588,180.00 and Y = 762,520.00; thence South 18,480.00 feet to a point having Coordinates of X = 1,588,180.00 and Y = 744,040.00; thence West 18,480.00 feet to a point having Coordinates of X = 1,569,700.00 and Y = 744,040.00; thence North 18,480.00 feet to a point having Coordinates of X = 1,569,700.00 and Y = 762,520.00; thence East 18,480.00 feet to the Point of Beginning, containing approximately **25 acres**, all as more particularly outlined on a plat on file in the Office of Mineral Resources, Department of Natural Resources. All bearings, distances and coordinates are based on Louisiana Coordinate System of 1927, (North or South Zone), where applicable.

NOTE: The above description of the Tract nominated for lease has been provided and corrected, where required, exclusively by the nomination party. Any mineral lease selected from this Tract and awarded by the Louisiana State Mineral and Energy Board shall be without warranty of any kind, either express, implied, or statutory, including, but not limited to, the implied warranties of merchantability and fitness for a particular purpose. Should the mineral lease awarded by the Louisiana State Mineral and Energy Board be subsequently modified, cancelled or abrogated due to the existence of conflicting leases, operating agreements, private claims or other future obligations or conditions which may affect all or any portion of the leased Tract, it shall not relieve the Lessee of the obligation to pay any bonus due thereon to the Louisiana State Mineral and Energy Board, nor shall the Louisiana State Mineral and Energy Board be obligated to refund any consideration paid by the Lessor prior to such modification, cancellation, or abrogation, including, but not limited to, bonuses, rentals and royalties.

Applicant: HEP ENERGY, INC.

Bidder	Cash Payment	Price/Acre	Rental	Oil	Gas	Other

Legend

12080020



IMAGERY.DOQQ_2004_1M

0 4,000 Feet

CADDO PARISH

DOOLEY BAYOU

P.O.B.

T20N - R14W

T20N - R15W



TRACT 42785 - Bossier and Caddo Parishes, Louisiana

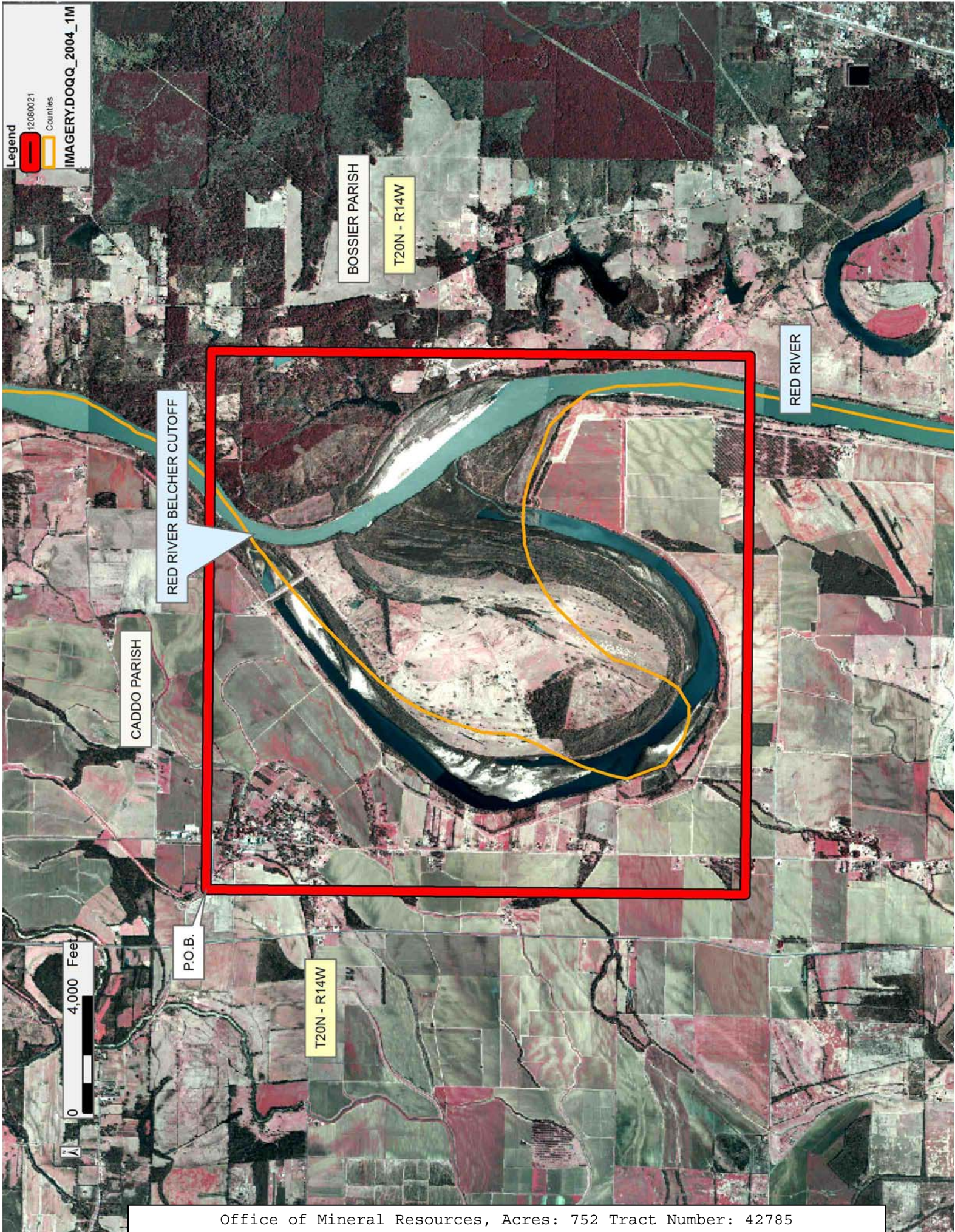
All of the lands now or formerly constituting the beds and bottoms of all water bodies of every nature and description as to which title is vested in the State of Louisiana, together with all islands arising therein and other lands formed by accretion or by reliction, where allowed by law, excepting tax adjudicated lands, and not presently under mineral lease on August 8, 2012, situated in Bossier and Caddo Parishes, Louisiana, and more particularly described as follows: Beginning at a point having Coordinates of X = 1,588,180.00 and Y = 762,520.00; thence East 18,480.00 feet to a point having Coordinates of X = 1,606,660.00 and Y = 762,520.00; thence South 18,480.00 feet to a point having Coordinates of X = 1,606,660.00 and Y = 744,040.00; thence West 18,480.00 feet to a point having Coordinates of X = 1,588,180.00 and Y = 744,040.00; thence North 18,480.00 feet to the point of beginning, **LESS AND EXCEPT** any right, title, and interest in lands owned by and not under lease from the State of Louisiana, on behalf of the Bossier and Caddo Parish School Boards, situated in Section 16, Township 20 North, Range 14 West, Bossier and Caddo Parishes, Louisiana, contained within the above described tract, containing approximately **752 acres**, all as more particularly outlined on a plat on file in the Office of Mineral Resources, Department of Natural Resources. All bearings, distances and coordinates are based on Louisiana Coordinate System of 1927, (North or South Zone), where applicable.

NOTE: The above description of the Tract nominated for lease has been provided and corrected, where required, exclusively by the nomination party. Any mineral lease selected from this Tract and awarded by the Louisiana State Mineral and Energy Board shall be without warranty of any kind, either express, implied, or statutory, including, but not limited to, the implied warranties of merchantability and fitness for a particular purpose. Should the mineral lease awarded by the Louisiana State Mineral and Energy Board be subsequently modified, cancelled or abrogated due to the existence of conflicting leases, operating agreements, private claims or other future obligations or conditions which may affect all or any portion of the leased Tract, it shall not relieve the Lessee of the obligation to pay any bonus due thereon to the Louisiana State Mineral and Energy Board, nor shall the Louisiana State Mineral and Energy Board be obligated to refund any consideration paid by the Lessor prior to such modification, cancellation, or abrogation, including, but not limited to, bonuses, rentals and royalties.

Applicant: HEP ENERGY, INC.

Bidder	Cash Payment	Price/Acre	Rental	Oil	Gas	Other

Legend
12080021
Counties
IMAGERY.DOQQ_2004_1M



TRACT 42786 - Caddo Parish, Louisiana

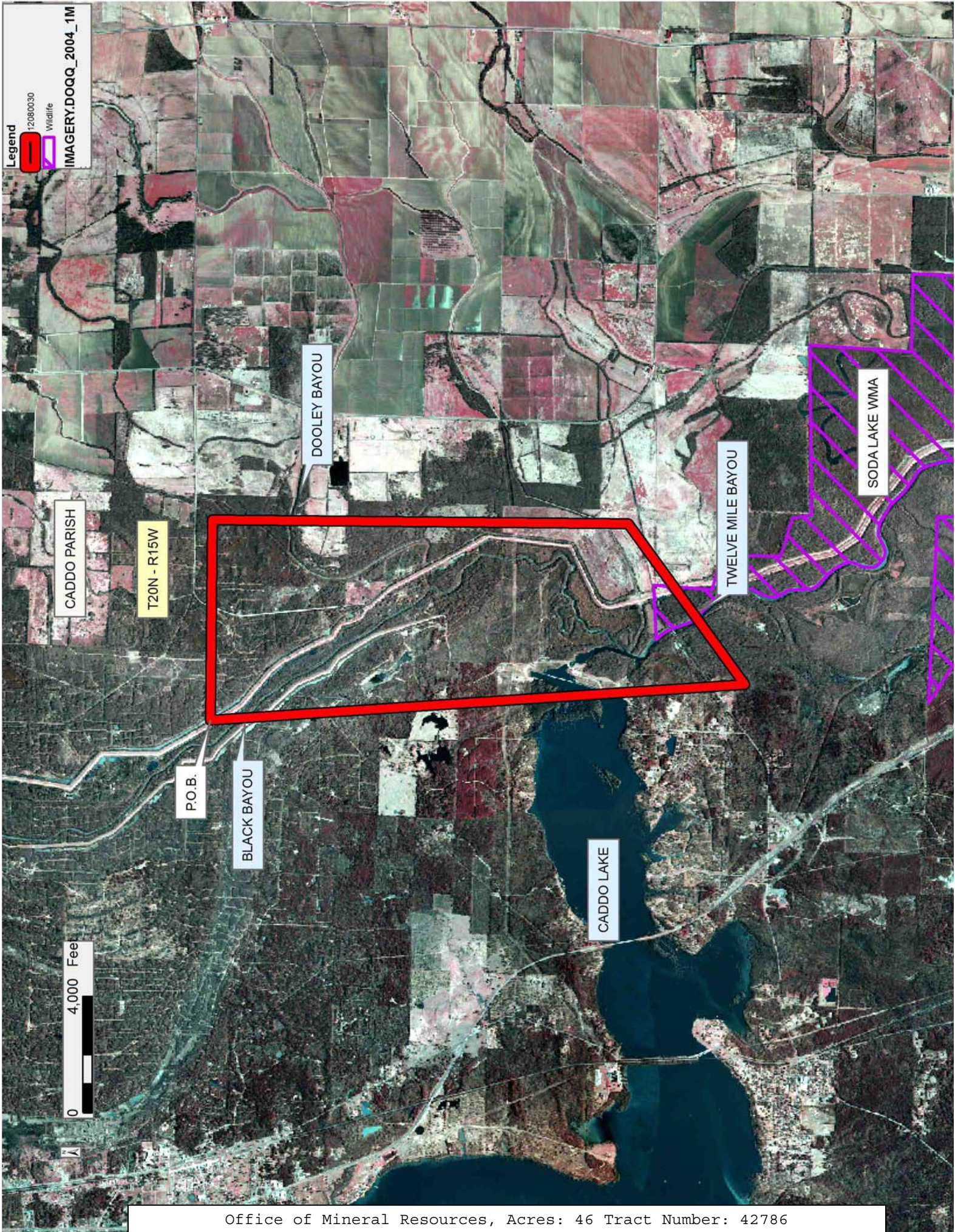
All of the lands now or formerly constituting the beds and bottoms of all water bodies of every nature and description as to which title is vested in the State of Louisiana, together with all islands arising therein and other lands formed by accretion or by reliction, where allowed by law, excepting tax adjudicated lands, and not presently under mineral lease on August 8, 2012, situated in Caddo Parish, Louisiana, and more particularly described as follows: Beginning at a point having Coordinates of X = 1,562,834.36 and Y = 758,296.07; thence East 6,865.64 feet to a point having Coordinates of X = 1,569,700.00 and Y = 758,296.07; thence South 14,256.07 feet to a point having Coordinates of X = 1,569,700.00 and Y = 744,040.00; thence South 53 degrees 32 minutes 18 seconds West 6,797.37 feet to a point having Coordinates of X = 1,564,233.18 and Y = 740,000.44; thence North 04 degrees 22 minutes 20 seconds West 18,349.03 feet to the point of beginning, **LESS AND EXCEPT** any portion of the Soda Lake Wildlife Management Area that may lie within the above described tract, containing approximately **46 acres**, all as more particularly outlined on a plat on file in the Office of Mineral Resources, Department of Natural Resources. All bearings, distances and coordinates are based on Louisiana Coordinate System of 1927, (North or South Zone), where applicable.

NOTE: The above description of the Tract nominated for lease has been provided and corrected, where required, exclusively by the nomination party. Any mineral lease selected from this Tract and awarded by the Louisiana State Mineral and Energy Board shall be without warranty of any kind, either express, implied, or statutory, including, but not limited to, the implied warranties of merchantability and fitness for a particular purpose. Should the mineral lease awarded by the Louisiana State Mineral and Energy Board be subsequently modified, cancelled or abrogated due to the existence of conflicting leases, operating agreements, private claims or other future obligations or conditions which may affect all or any portion of the leased Tract, it shall not relieve the Lessee of the obligation to pay any bonus due thereon to the Louisiana State Mineral and Energy Board, nor shall the Louisiana State Mineral and Energy Board be obligated to refund any consideration paid by the Lessor prior to such modification, cancellation, or abrogation, including, but not limited to, bonuses, rentals and royalties.

Bidder	Cash Payment	Price/Acre	Rental	Oil	Gas	Other

Applicant: TACOMA ENERGY CORPORATION

Legend
12080030
Wildlife
IMAGERY.DOQQ_2004_1M



CADDO PARISH

T20N - R15W

DOOLEY BAYOU

TWELVE MILE BAYOU

SODA LAKE WMA

P.O.B.

BLACK BAYOU

CADDO LAKE

0 4,000 Feet

TRACT 42787 - Caddo Parish, Louisiana

All of the lands now or formerly constituting the beds and bottoms of all water bodies of every nature and description as to which title is vested in the State of Louisiana, together with all islands arising therein and other lands formed by accretion or by reliction, where allowed by law, excepting tax adjudicated lands, and not presently under mineral lease on August 8, 2012, situated in Caddo Parish, Louisiana, and more particularly described as follows: Beginning at a point having Coordinates of X = 1,538,526.75 and Y = 738,045.42; thence North approximately 5,193 feet to a point on the southern boundary of State Lease No. 173, as amended; thence along the boundaries of said State Lease No. 173 the following courses: Northeasterly, Easterly, Southeasterly, Northeasterly, Easterly, Southwesterly and Easterly to its Southeast corner; thence Southerly approximately 6,116 feet to a point having Coordinates of X = 1,554,353.30 and Y = 734,474.36; thence North 77 degrees 17 minutes 06 seconds West 16,224.44 feet to the Point of Beginning, containing approximately **171 acres**, all as more particularly outlined on a plat on file in the Office of Mineral Resources, Department of Natural Resources. All bearings, distances and coordinates are based on Louisiana Coordinate System of 1927, (North or South Zone), where applicable.

NOTE: The above description of the Tract nominated for lease has been provided and corrected, where required, exclusively by the nomination party. Any mineral lease selected from this Tract and awarded by the Louisiana State Mineral and Energy Board shall be without warranty of any kind, either express, implied, or statutory, including, but not limited to, the implied warranties of merchantability and fitness for a particular purpose. Should the mineral lease awarded by the Louisiana State Mineral and Energy Board be subsequently modified, cancelled or abrogated due to the existence of conflicting leases, operating agreements, private claims or other future obligations or conditions which may affect all or any portion of the leased Tract, it shall not relieve the Lessee of the obligation to pay any bonus due thereon to the Louisiana State Mineral and Energy Board, nor shall the Louisiana State Mineral and Energy Board be obligated to refund any consideration paid by the Lessor prior to such modification, cancellation, or abrogation, including, but not limited to, bonuses, rentals and royalties.

Bidder	Cash Payment	Price/Acre	Rental	Oil	Gas	Other

Applicant: STRATA ACQUISITIONS LLC

Legend

12080127



Active_Leases



IMAGERY.DOQQ_2004_1M

0 3,000 Feet



SL 173

CADDO PARISH

CADDO LAKE

T20N - R15W

T19N - R16W

P.O.B.

TRACT 42788 - Bossier and Caddo Parishes, Louisiana

All of the lands now or formerly constituting the beds and bottoms of all water bodies of every nature and description as to which title is vested in the State of Louisiana, together with all islands arising therein and other lands formed by accretion or by reliction, where allowed by law, excepting tax adjudicated lands, and not presently under mineral lease on August 8, 2012, situated in Bossier and Caddo Parishes, Louisiana, and more particularly described as follows: Beginning at a point having Coordinates of X = 1,598,780.00 and Y = 744,040.00; thence East 18,480.00 feet to a point having Coordinates of X = 1,617,260.00 and Y = 744,040.00; thence South 13,340.00 feet to a point having Coordinates of X = 1,617,260.00 and Y = 730,700.00; thence West 18,480.00 feet to a point having Coordinates of X = 1,598,780.00 and Y = 730,700.00; thence North 13,340.00 feet to the point of beginning, containing approximately **312 acres**, all as more particularly outlined on a plat on file in the Office of Mineral Resources, Department of Natural Resources. All bearings, distances and coordinates are based on Louisiana Coordinate System of 1927, (North or South Zone), where applicable.

NOTE: The above description of the Tract nominated for lease has been provided and corrected, where required, exclusively by the nomination party. Any mineral lease selected from this Tract and awarded by the Louisiana State Mineral and Energy Board shall be without warranty of any kind, either express, implied, or statutory, including, but not limited to, the implied warranties of merchantability and fitness for a particular purpose. Should the mineral lease awarded by the Louisiana State Mineral and Energy Board be subsequently modified, cancelled or abrogated due to the existence of conflicting leases, operating agreements, private claims or other future obligations or conditions which may affect all or any portion of the leased Tract, it shall not relieve the Lessee of the obligation to pay any bonus due thereon to the Louisiana State Mineral and Energy Board, nor shall the Louisiana State Mineral and Energy Board be obligated to refund any consideration paid by the Lessor prior to such modification, cancellation, or abrogation, including, but not limited to, bonuses, rentals and royalties.

Applicant: HEP ENERGY, INC.

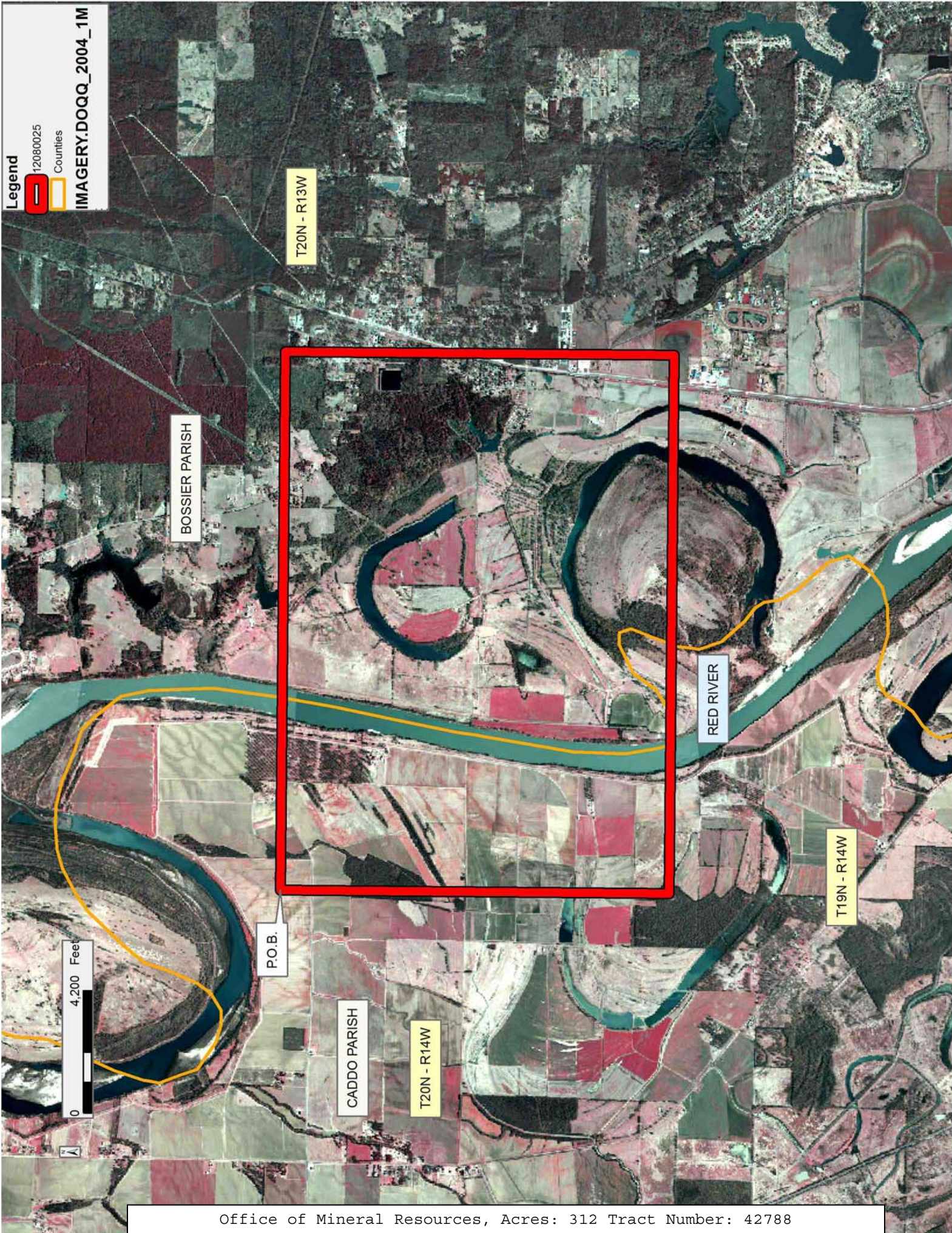
Bidder	Cash Payment	Price/Acre	Rental	Oil	Gas	Other

Legend

12080025

Counties

IMAGERY.DOQQ_2004_1M



TRACT 42789 - Caddo Parish, Louisiana

All of the lands now or formerly constituting the beds and bottoms of all water bodies of every nature and description as to which title is vested in the State of Louisiana, together with all islands arising therein and other lands formed by accretion or by reliction, where allowed by law, excepting tax adjudicated lands, and not presently under mineral lease on August 8, 2012, situated in Caddo Parish, Louisiana, and more particularly described as follows: Beginning at a point having Coordinates of X = 1,564,233.18 and Y = 740,000.44; thence North 53 degrees 32 minutes 18 seconds East 6,797.37 feet to a point having Coordinates of X = 1,569,700.00 and Y = 744,040.00; thence South 30 degrees 01 minutes 59 seconds East 17,460.01 feet to a point having Coordinates of X = 1,578,438.73 and Y = 728,924.23; thence South 46 degrees 20 minutes 48 seconds West 7,404.13 feet to a point having Coordinates of X = 1,573,081.61 and Y = 723,813.22; thence North 28 degrees 39 minutes 45 seconds West 18,447.78 feet to the point of beginning, **LESS AND EXCEPT** any portion of the Soda Lake Wildlife Management Area that may lie within the above described tract, containing approximately **40 acres**, all as more particularly outlined on a plat on file in the Office of Mineral Resources, Department of Natural Resources. All bearings, distances and coordinates are based on Louisiana Coordinate System of 1927, (North or South Zone), where applicable.

NOTE: The above description of the Tract nominated for lease has been provided and corrected, where required, exclusively by the nomination party. Any mineral lease selected from this Tract and awarded by the Louisiana State Mineral and Energy Board shall be without warranty of any kind, either express, implied, or statutory, including, but not limited to, the implied warranties of merchantability and fitness for a particular purpose. Should the mineral lease awarded by the Louisiana State Mineral and Energy Board be subsequently modified, cancelled or abrogated due to the existence of conflicting leases, operating agreements, private claims or other future obligations or conditions which may affect all or any portion of the leased Tract, it shall not relieve the Lessee of the obligation to pay any bonus due thereon to the Louisiana State Mineral and Energy Board, nor shall the Louisiana State Mineral and Energy Board be obligated to refund any consideration paid by the Lessor prior to such modification, cancellation, or abrogation, including, but not limited to, bonuses, rentals and royalties.

Applicant: TACOMA ENERGY CORPORATION

Bidder	Cash Payment	Price/Acre	Rental	Oil	Gas	Other

Legend

12080031



Wildlife



IMAGERY.DOQQ_2004_1M

CADDO PARISH

T20N - R15W

SODA LAKE WMA

TWELVE MILE BAYOU

0 3,200 Feet

P.O.B.

T19N - R15W

TRACT 42790 - Caddo Parish, Louisiana

All of the lands now or formerly constituting the beds and bottoms of all water bodies of every nature and description as to which title is vested in the State of Louisiana, together with all islands arising therein and other lands formed by accretion or by reliction, where allowed by law, excepting tax adjudicated lands, and not presently under mineral lease on August 8, 2012, situated in Caddo Parish, Louisiana, and more particularly described as follows: Beginning at a point having Coordinates of X = 1,598,780.00 and Y = 744,040.00; thence South 13,340.00 feet to a point having Coordinates of X = 1,598,780.00 and Y = 730,700.00; thence West 18,480.00 feet to a point having Coordinates of X = 1,580,300.00 and Y = 730,700.00; thence North 13,340.00 feet to a point having Coordinates of X = 1,580,300.00 and Y = 744,040.00; thence East 18,480.00 feet to the point of beginning, containing approximately **13 acres**, all as more particularly outlined on a plat on file in the Office of Mineral Resources, Department of Natural Resources. All bearings, distances and coordinates are based on Louisiana Coordinate System of 1927, (North or South Zone), where applicable.

NOTE: The above description of the Tract nominated for lease has been provided and corrected, where required, exclusively by the nomination party. Any mineral lease selected from this Tract and awarded by the Louisiana State Mineral and Energy Board shall be without warranty of any kind, either express, implied, or statutory, including, but not limited to, the implied warranties of merchantability and fitness for a particular purpose. Should the mineral lease awarded by the Louisiana State Mineral and Energy Board be subsequently modified, cancelled or abrogated due to the existence of conflicting leases, operating agreements, private claims or other future obligations or conditions which may affect all or any portion of the leased Tract, it shall not relieve the Lessee of the obligation to pay any bonus due thereon to the Louisiana State Mineral and Energy Board, nor shall the Louisiana State Mineral and Energy Board be obligated to refund any consideration paid by the Lessor prior to such modification, cancellation, or abrogation, including, but not limited to, bonuses, rentals and royalties.

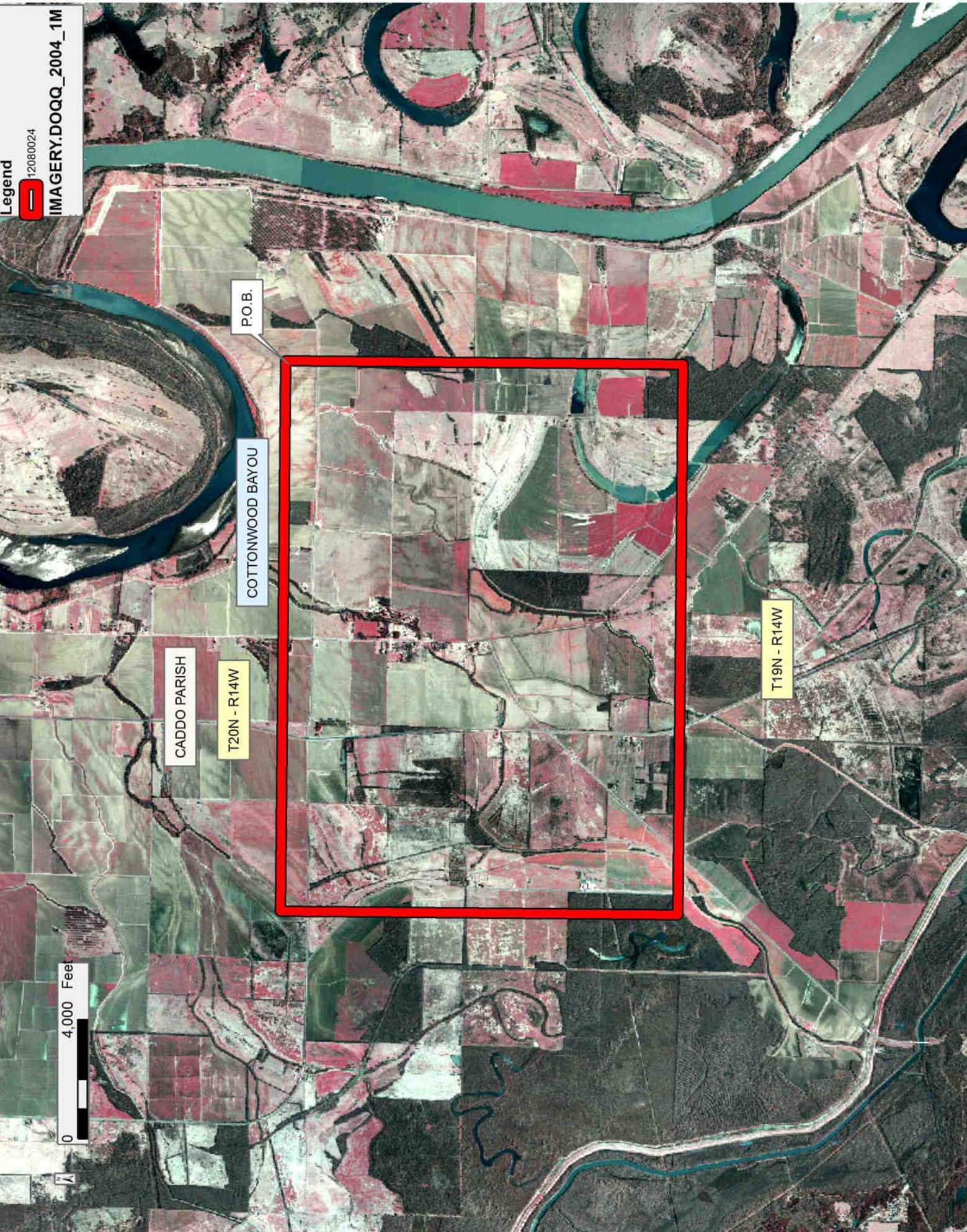
Applicant: HEP ENERGY, INC.

Bidder	Cash Payment	Price/Acre	Rental	Oil	Gas	Other

Legend

12080024

IMAGERY.DOQQ_2004_1M



TRACT 42791 - Caddo Parish, Louisiana

All of the lands now or formerly constituting the beds and bottoms of all water bodies of every nature and description the title of which vests in the State of Louisiana, together with all islands arising therein and other lands formed by accretion or by reliction, where allowed by law, excepting tax adjudicated lands, and not presently under mineral lease on August 8, 2012, situated in Caddo Parish, Louisiana, and more particularly described as follows: Beginning at a point having Coordinates of X = 1,538,526.75 and Y = 738,045.42; thence South 45 degrees 01 minutes 43 seconds West 14,877.13 feet to a point having Coordinates of X = 1,528,001.80 and Y = 727,530.93; thence West 3,018.92 feet to a point having Coordinates of X = 1,524,982.89 and Y = 727,530.93; thence North 00 degrees 15 minutes 02 seconds East 7,050.75 feet to a point having Coordinates of X = 1,525,013.70 and Y = 734,581.61; thence Easterly approximately 240 feet to a point on the Southern boundary of State Lease No. 173, as amended; thence along the boundaries of said State Lease No. 173 the following courses: Easterly, Northeasterly, Southeasterly, Northwesterly, Southeasterly, Northwesterly and Northeasterly to a point having a Coordinate of X = 1,538,526.75; thence Southerly approximately 5,193 feet to the point of beginning, containing approximately **388 acres, LESS AND EXCEPT** that portion thereof, if any, located West of the boundary line between the States of Texas and Louisiana as determined by the report of the Special Master and adjudicated by the Supreme Court of the United States in litigation styled **Texas v. Louisiana, et al No. 36 Original**, or as otherwise approved by said court, all as more particularly outlined on a plat on file in the Office of Mineral Resources, Department of Natural Resources. All bearings, distances and coordinates are based on Louisiana Coordinate System of 1927, (North or South Zone), where applicable.

NOTE: The above description of the Tract nominated for lease has been provided and corrected, where required, exclusively by the nomination party. Any mineral lease selected from this Tract and awarded by the Louisiana State Mineral and Energy Board shall be without warranty of any kind, either express, implied, or statutory, including, but not limited to, the implied warranties of merchantability and fitness for a particular purpose. Should the mineral lease awarded by the Louisiana State Mineral and Energy Board be subsequently modified, cancelled or abrogated due to the existence of conflicting leases, operating agreements, private claims or other future obligations or conditions which may affect all or any portion of the leased Tract, it shall not relieve the Lessee of the obligation to pay any bonus due thereon to the Louisiana State Mineral and Energy Board, nor shall the Louisiana State Mineral and Energy Board be obligated to refund any consideration paid by the Lessor prior to such modification, cancellation, or abrogation, including, but not limited to, bonuses, rentals and royalties.

Applicant: STRATA ACQUISITIONS LLC

Bidder	Cash Payment	Price/Acre	Rental	Oil	Gas	Other

