

TRACT 42792 - Caddo Parish, Louisiana

All of the lands now or formerly constituting the beds and bottoms of all water bodies of every nature and description as to which title is vested in the State of Louisiana, together with all islands arising therein and other lands formed by accretion or by reliction, where allowed by law, excepting tax adjudicated lands, and not presently under mineral lease on August 8, 2012, situated in Caddo Parish, Louisiana, and more particularly described as follows: Beginning at a point having Coordinates of X = 1,573,081.61 and Y = 723,813.22; thence North 46 degrees 20 minutes 48 seconds East 9,976.62 feet to a point having Coordinates of X = 1,580,300.00 and Y = 730,700.00; thence East 3,428.72 feet to a point having Coordinates of X = 1,583,728.72 and Y = 730,700.00; thence South 20 degrees 11 minutes 52 seconds West 8,645.46 feet to the Northwest corner of State Lease No. 19435 having Coordinates of X = 1,580,743.76 and Y = 722,586.19; thence South 01 degrees 35 minutes 17 seconds West 4,636.06 feet along the west boundary of said State Lease No. 19435 to a point having Coordinates of X = 1,580,615.27 and Y = 717,951.91; thence North 52 degrees 06 minutes 59 seconds West 9,545.21 feet to the point of beginning, **LESS AND EXCEPT** any portion of the Soda Lake Wildlife Management Area that may lie within the above described tract, containing approximately **28 acres**, all as more particularly outlined on a plat on file in the Office of Mineral Resources, Department of Natural Resources. All bearings, distances and coordinates are based on Louisiana Coordinate System of 1927, (North or South Zone), where applicable.

NOTE: The above description of the Tract nominated for lease has been provided and corrected, where required, exclusively by the nomination party. Any mineral lease selected from this Tract and awarded by the Louisiana State Mineral and Energy Board shall be without warranty of any kind, either express, implied, or statutory, including, but not limited to, the implied warranties of merchantability and fitness for a particular purpose. Should the mineral lease awarded by the Louisiana State Mineral and Energy Board be subsequently modified, cancelled or abrogated due to the existence of conflicting leases, operating agreements, private claims or other future obligations or conditions which may affect all or any portion of the leased Tract, it shall not relieve the Lessee of the obligation to pay any bonus due thereon to the Louisiana State Mineral and Energy Board, nor shall the Louisiana State Mineral and Energy Board be obligated to refund any consideration paid by the Lessor prior to such modification, cancellation, or abrogation, including, but not limited to, bonuses, rentals and royalties.

Bidder	Cash Payment	Price/Acre	Rental	Oil	Gas	Other

--	--	--	--	--	--	--

Applicant: TACOMA ENERGY CORPORATION

Legend
12080033
Wildlife
IMAGERY.DOQQ_2004_1M

CADDO PARISH

T19N - R15W

T19N - R14W

TWELVE MILE BAYOU

COTTON BAYOU

SODA LAKE WMA

P.O.B.

0 3,000 Feet

TRACT 42793 - Bossier and Caddo Parishes, Louisiana

All of the lands now or formerly constituting the beds and bottoms of all water bodies of every nature and description as to which title is vested in the State of Louisiana, together with all islands arising therein and other lands formed by accretion or by reliction, where allowed by law, excepting tax adjudicated lands, and not presently under mineral lease on August 8, 2012, situated in Bossier and Caddo Parishes, Louisiana, and more particularly described as follows: Beginning at a point having Coordinates of X = 1,600,637.25 and Y = 730,700.00; thence East 15,024.27 feet to a point having Coordinates of X = 1,615,661.51 and Y = 730,700.00; thence South 05 degrees 57 minutes 58 seconds West 3,720.15 feet to a point on the North boundary of State Lease No. 20669 having Coordinates of X = 1,615,274.83 and Y = 727,000.00; thence along the boundaries of said State Lease No. 20669 the following courses: West 2,474.83 feet to a point having Coordinates of X = 1,612,800.00 and Y = 727,000.00 and South approximately 7,124 feet to a point of intersection with the North boundary of State Lease No. 2066; thence along the boundaries of said State Lease No. 2066 the following courses: Northwesterly, Westerly and Southeasterly to a point of intersection with a East-West line having a Coordinate of Y = 715,732.73; thence West approximately 11,579 feet to a point having Coordinates of X = 1,603,771.36 and Y = 715,732.73; thence North 11 degrees 49 minutes 36 seconds West 15,291.89 feet to the point of beginning, **LESS AND EXCEPT** any and all of State Lease No. 2066 that may lie within the above described tract, containing approximately **608 acres**, all as more particularly outlined on a plat on file in the Office of Mineral Resources, Department of Natural Resources. All bearings, distances and coordinates are based on Louisiana Coordinate System of 1927, (North or South Zone), where applicable.

NOTE: The above description of the Tract nominated for lease has been provided and corrected, where required, exclusively by the nomination party. Any mineral lease selected from this Tract and awarded by the Louisiana State Mineral and Energy Board shall be without warranty of any kind, either express, implied, or statutory, including, but not limited to, the implied warranties of merchantability and fitness for a particular purpose. Should the mineral lease awarded by the Louisiana State Mineral and Energy Board be subsequently modified, cancelled or abrogated due to the existence of conflicting leases, operating agreements, private claims or other future obligations or conditions which may affect all or any portion of the leased Tract, it shall not relieve the Lessee of the obligation to pay any bonus due thereon to the Louisiana State Mineral and Energy Board, nor shall the Louisiana State Mineral and Energy Board be obligated to refund any consideration paid by the Lessor prior to such modification, cancellation, or abrogation, including, but not limited to, bonuses, rentals and royalties.

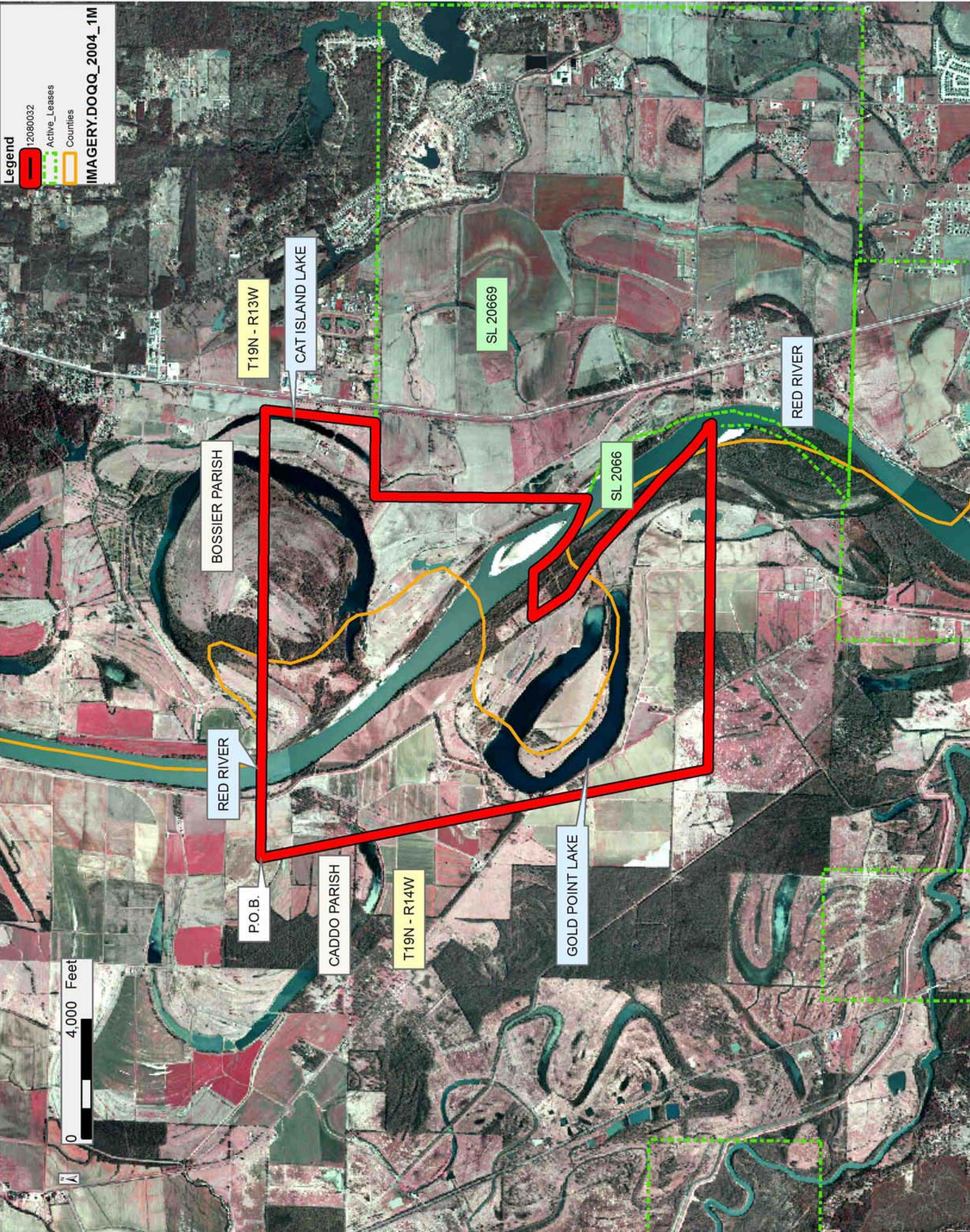
Applicant: TACOMA ENERGY CORPORATION

Bidder	Cash Payment	Price/Acre	Rental	Oil	Gas	Other

Legend

- 12080032
- Active_Leases
- Counties

IMAGERY.DOQQ_2004_1M



TRACT 42794 - Lasalle Parish, Louisiana

All of the lands now or formerly constituting the beds and bottoms of all water bodies of every nature and description as to which title is vested in the State of Louisiana, together with all islands arising therein and other lands formed by accretion or by reliction, where allowed by law, excepting tax adjudicated lands, and not presently under mineral lease on August 8, 2012, situated in Lasalle Parish, Louisiana, and more particularly described as follows: Beginning at a point having Coordinates of X = 2,120,120.00 and Y = 322,260.00; thence East 659.88 feet to the Southwest corner of the Westernmost portion of State Lease No. 16827, as amended, having Coordinates of X = 2,120,779.88 and Y = 322,260.00; thence East 188.32 feet along the South boundary of the Westernmost portion of said State Lease No. 16827 to its Southeast corner having Coordinates of X = 2,120,968.20 and Y = 322,260.00; thence East 471.80 feet to the Southwest corner of the Easternmost portion of said State Lease No. 16827 having Coordinates of X = 2,121,440.00 and Y = 322,260.00; thence East 58.64 feet along the South boundary of the Easternmost portion of said State Lease No. 16827 to the Northwest corner of State Lease No. 18951, as amended, having Coordinates of X = 2,121,498.64 and Y = 322,260.00; thence along the boundary of said State Lease No. 18951 the following courses: South 1,320.00 feet to its Southwest corner having Coordinates of X = 2,121,498.64 and Y = 320,940.00 and East 2,640.00 feet to its Southeast corner having Coordinates of X = 2,124,138.64 and Y = 320,940.00; thence East 371.05 feet to a point having Coordinates of X = 2,124,509.69 and Y = 320,940.00; thence South 1,256.02 feet to a point having Coordinates of X = 2,124,509.69 and Y = 319,683.99; thence West 4,011.30 feet to a point on the Eastern boundary of State Lease No. 20847 having Coordinates of X = 2,120,498.38 and Y = 319,683.99; thence along the boundary of said State Lease No. 20847 the following courses: North 32 degrees 10 minutes 17 seconds West 493.29 feet to a corner having Coordinates of X = 2,120,235.73 and Y = 320,101.54, and South 54 degrees 55 minutes 25 seconds West 141.41 feet to a point on its Northern boundary having Coordinates of X = 2,120,120.00 and Y = 320,020.27; thence North 2,239.73 feet to the point of beginning, containing approximately **166 acres**, all as more particularly outlined on a plat on file in the Office of Mineral Resources, Department of Natural Resources. All bearings, distances and coordinates are based on Louisiana Coordinate System of 1927, (North or South Zone), where applicable.

NOTE: The above description of the Tract nominated for lease has been provided and corrected, where required, exclusively by the nomination party. Any mineral lease selected from this Tract and awarded by the Louisiana State Mineral and Energy Board shall be without warranty of any kind, either express, implied, or statutory, including, but not limited to, the implied warranties of merchantability and fitness for a particular purpose. Should the mineral lease awarded by the Louisiana State Mineral and Energy Board be subsequently modified, cancelled or abrogated due to the existence of conflicting leases, operating agreements, private claims or other future obligations or conditions which may affect all or any

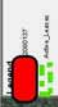
portion of the leased Tract, it shall not relieve the Lessee of the obligation to pay any bonus due thereon to the Louisiana State Mineral and Energy Board, nor shall the Louisiana State Mineral and Energy Board be obligated to refund any consideration paid by the Lessor prior to such modification, cancellation, or abrogation, including, but not limited to, bonuses, rentals and royalties.

NOTE: Notice is given to all parties that there is a class action suit pending in this area.

NOTE: The Department of Wildlife and Fisheries, as part of its overall wildlife management plan in the area, initiates an annual drawdown of water in Catahoula Lake which may affect operations for mineral development by State mineral lessees in Catahoula Lake. Accordingly, any mineral lessee of the State in Catahoula Lake should check with the Department of Wildlife and Fisheries for the water drawdown dates before initiating any operations which may be affected by same.

Applicant: FAR WEST DEVELOPMENT LLC

Bidder	Cash Payment	Price/Acre	Rental	Oil	Gas	Other



LA SALLE PARISH

CATAHOULA LAKE

2,000 Feet



T7N - R4E

SL 16827

SL 18951

SL 16827

P.O.B.

SL 20847

T7N - R3E

TRACT 42795 - Catahoula and Concordia Parishes, Louisiana

All of the lands now or formerly constituting the beds and bottoms of all water bodies of every nature and description as to which title is vested in the State of Louisiana, together with all islands arising therein and other lands formed by accretion or by reliction, where allowed by law, excepting tax adjudicated lands, and not presently under mineral lease on August 8, 2012, situated in Catahoula and Concordia Parishes, Louisiana, and more particularly described as follows: Beginning at a point having Coordinates of X = 2,238,500.00 and Y = 285,050.00; thence East 5,550.00 feet to a point having Coordinates of X = 2,244,050.00 and Y = 285,050.00; thence South 6,000.00 feet to a point having Coordinates of X = 2,244,050.00 and Y = 279,050.00; thence West 5,550.00 feet to a point having Coordinates of X = 2,238,500.00 and Y = 279,050.00; thence North 6,000.00 feet to the point of beginning, containing approximately **126 acres**, all as more particularly outlined on a plat on file in the Office of Mineral Resources, Department of Natural Resources. All bearings, distances and coordinates are based on Louisiana Coordinate System of 1927, (North or South Zone), where applicable.

NOTE: The above description of the Tract nominated for lease has been provided and corrected, where required, exclusively by the nomination party. Any mineral lease selected from this Tract and awarded by the Louisiana State Mineral and Energy Board shall be without warranty of any kind, either express, implied, or statutory, including, but not limited to, the implied warranties of merchantability and fitness for a particular purpose. Should the mineral lease awarded by the Louisiana State Mineral and Energy Board be subsequently modified, cancelled or abrogated due to the existence of conflicting leases, operating agreements, private claims or other future obligations or conditions which may affect all or any portion of the leased Tract, it shall not relieve the Lessee of the obligation to pay any bonus due thereon to the Louisiana State Mineral and Energy Board, nor shall the Louisiana State Mineral and Energy Board be obligated to refund any consideration paid by the Lessor prior to such modification, cancellation, or abrogation, including, but not limited to, bonuses, rentals and royalties.

Applicant: THEOPHILUS OIL, GAS & LAND SERVICES, LLC

Bidder	Cash Payment	Price/Acre	Rental	Oil	Gas	Other

Legend

12080111

Counties

IMAGERY.DOQQ_2004_1M

CONCORDIA PARISH

T6N - R7E

BLACK RIVER LAKE

CATAHOULA PARISH

P.O.B.

T5N - R7E

0 2,000 Feet



TRACT 42796 - LaSalle and Rapides Parishes, Louisiana

All of the lands now or formerly constituting the beds and bottoms of all water bodies of every nature and description as to which title is vested in the State of Louisiana, together with all islands arising therein and other lands formed by accretion or by reliction, where allowed by law, excepting tax adjudicated lands, and not presently under mineral lease on August 8, 2012, situated in LaSalle and Rapides Parishes, Louisiana, and more particularly described as follows: All of Section 16, Township 5 North, Range 3 East, LaSalle and Rapides Parishes, Louisiana, lying East of the centerline of Big Saline Bayou, (This tract includes only waterbottoms located within the Dewey W. Wills Wildlife Management Area), containing approximately **6.43 acres**, all as more particularly outlined on a plat on file in the Office of Mineral Resources, Department of Natural Resources. All bearings, distances and coordinates are based on Louisiana Coordinate System of 1927, (North or South Zone), where applicable.

NOTE: The above description of the Tract nominated for lease has been provided and corrected, where required, exclusively by the nomination party. Any mineral lease selected from this Tract and awarded by the Louisiana State Mineral and Energy Board shall be without warranty of any kind, either express, implied, or statutory, including, but not limited to, the implied warranties of merchantability and fitness for a particular purpose. Should the mineral lease awarded by the Louisiana State Mineral and Energy Board be subsequently modified, cancelled or abrogated due to the existence of conflicting leases, operating agreements, private claims or other future obligations or conditions which may affect all or any portion of the leased Tract, it shall not relieve the Lessee of the obligation to pay any bonus due thereon to the Louisiana State Mineral and Energy Board, nor shall the Louisiana State Mineral and Energy Board be obligated to refund any consideration paid by the Lessor prior to such modification, cancellation, or abrogation, including, but not limited to, bonuses, rentals and royalties.

NOTE: The mineral lease is located in the Dewey W. Wills WMA under the jurisdiction of the Louisiana Department of Wildlife and Fisheries which has promulgated rules and regulations for the protection of game and wildlife on the aforesaid Tract and, therefore, shall be subject to said rules and regulations, a copy of which shall be attached to the mineral lease. In addition to the specific rules and regulations applicable, the following shall apply regarding operations under this mineral lease:

NOTE: No activities will be allowed without written authorization from the Louisiana Department of Wildlife and Fisheries.

NOTE: Proposed projects will be evaluated on a case by case basis. Modifications to proposed project features including but not limited to access routes, spoil placement, well sites, flowlines and appurtenant structures may be required by the Department of Wildlife and Fisheries.

NOTE: Compliance with the said WMA regulations will be required unless otherwise specified by the Department of Wildlife and Fisheries.

NOTE: Compensatory mitigation will be required to offset unavoidable wetland impacts.

NOTE: Removal of all structures, facilities and equipment will be required within 120 days of abandonment unless otherwise agreed to in writing by the Louisiana Department of Wildlife and Fisheries.

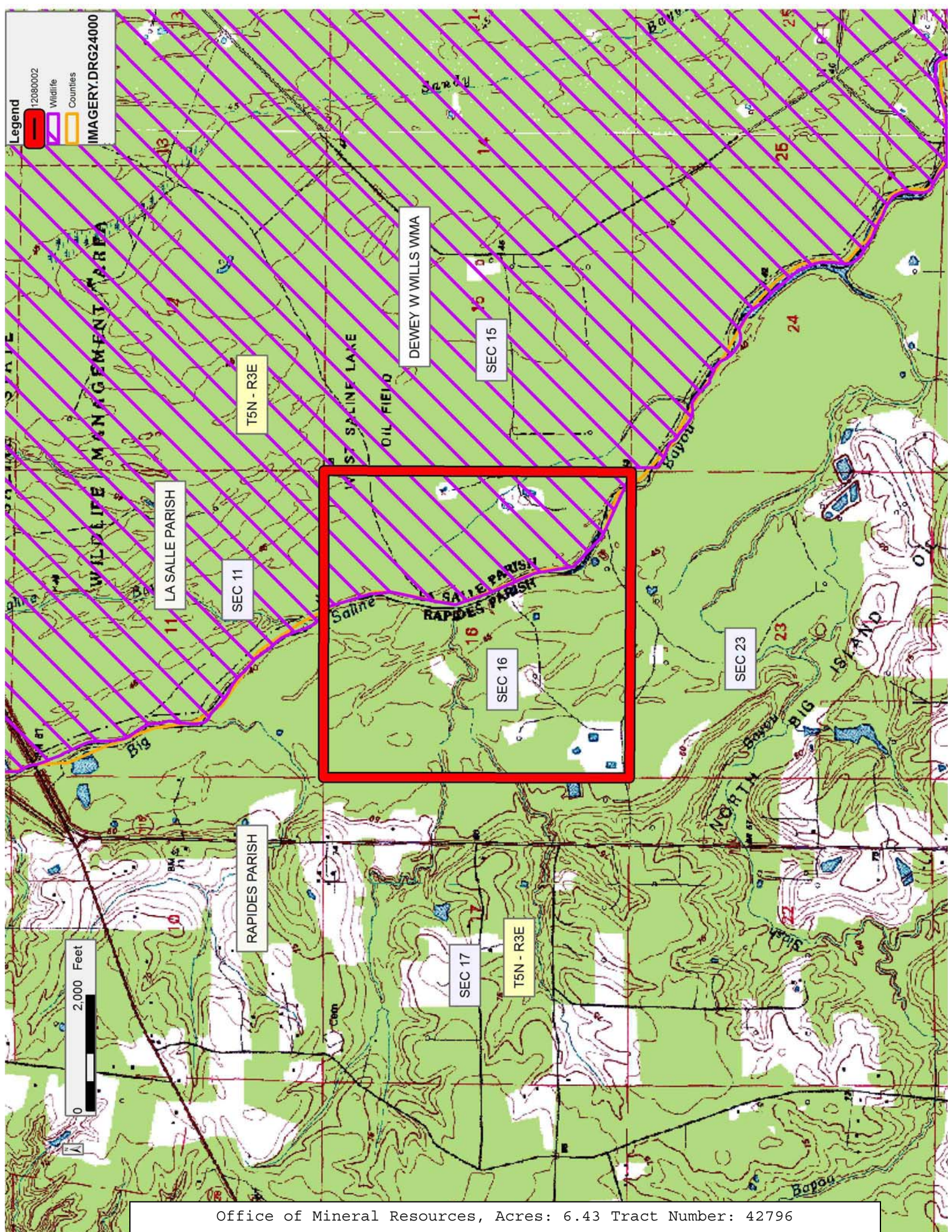
NOTE: No activities will be allowed during the hunting season unless approved by the Department.

NOTE: Prior to submitting applications for wetland permits to Federal and State permitting agencies the leaseholder shall coordinate project details with the Department of Wildlife and Fisheries. Contact person for the Department will be Mike Windham at (504) 284-5268.

NOTE: Additionally, the Department will require a minimum bonus of \$150.00 per acre and a minimum royalty of 25%.

Applicant: STAFF OFFICE OF MINERAL RESOURCES

Bidder	Cash Payment	Price/Acre	Rental	Oil	Gas	Other



Legend

- 12080002
- Wildlife
- Counties

IMAGERY.DRG24000

2,000 Feet

TRACT 42797 - Concordia Parish, Louisiana

All of the lands now or formerly constituting the beds and bottoms of all water bodies of every nature and description as to which title is vested in the State of Louisiana, together with all islands arising therein and other lands formed by accretion or by reliction, where allowed by law, excepting tax adjudicated lands, and not presently under mineral lease on August 8, 2012, situated in Concordia Parish, Louisiana, and more particularly described as follows: Beginning at a point having Coordinates of X = 2,294,483.11 and Y = 246,314.17; thence North 88 degrees 42 minutes 14 seconds East 6,927.74 feet to a point having Coordinates of X = 2,301,409.07 and Y = 246,470.88; thence South 41 degrees 15 minutes 44 East approximately 9,908 feet to a point on the North boundary of Operating Agreement 0213; thence along the boundaries of said Operating Agreement 0213 the following courses: Southwesterly, Southeasterly and Northeasterly to a point have a bearing North 41 degrees 15 minutes 44 seconds West from Coordinates of X = 2,310,034.89 and Y = 236,639.28; thence South 41 degrees 15 minutes 44 seconds East approximately 1,660 feet to a point having Coordinates of X = 2,310,034.89 and Y = 236,639.28; thence South 04 degrees 38 minutes 21 seconds West 3,049.27 feet to the Northeast corner of State Lease No. 19930 having Coordinates of X = 2,309,788.26 and Y = 233,600.00; thence West 2,897.34 feet along the north boundary of said State Lease No. 19930 to a point having Coordinates of X = 2,306,890.92 and Y = 233,600.00; thence North 23 degrees 19 minutes 18 seconds West 7,298.08 feet to a point having Coordinates of X = 2,304,001.66 and Y = 240,301.81; thence North 47 degrees 51 minutes 03 seconds West 2,220.73 feet to a point having Coordinates of X = 2,302,355.21 and Y = 241,792.05; thence North 60 degrees 07 minutes 29 seconds West 9,078.52 feet to the point of beginning, **LESS AND EXCEPT** any of the above described tract that falls within the State of Mississippi, containing approximately **516 acres**, all as more particularly outlined on a plat on file in the Office of Mineral Resources, Department of Natural Resources. All bearings, distances and coordinates are based on Louisiana Coordinate System of 1927, (North or South Zone), where applicable.

NOTE: The above description of the Tract nominated for lease has been provided and corrected, where required, exclusively by the nomination party. Any mineral lease selected from this Tract and awarded by the Louisiana State Mineral and Energy Board shall be without warranty of any kind, either express, implied, or statutory, including, but not limited to, the implied warranties of merchantability and fitness for a particular purpose. Should the mineral lease awarded by the Louisiana State Mineral and Energy Board be subsequently modified, cancelled or abrogated due to the existence of conflicting leases, operating agreements, private claims or other future obligations or conditions which may affect all or any portion of the leased Tract, it shall not relieve the Lessee of the obligation to pay any bonus due thereon to the Louisiana State Mineral and Energy Board, nor shall the Louisiana State Mineral and Energy Board be obligated to refund any consideration paid by the Lessor prior to such

modification, cancellation, or abrogation, including, but not limited to, bonuses, rentals and royalties.

Applicant: LESLIE M. COOPER

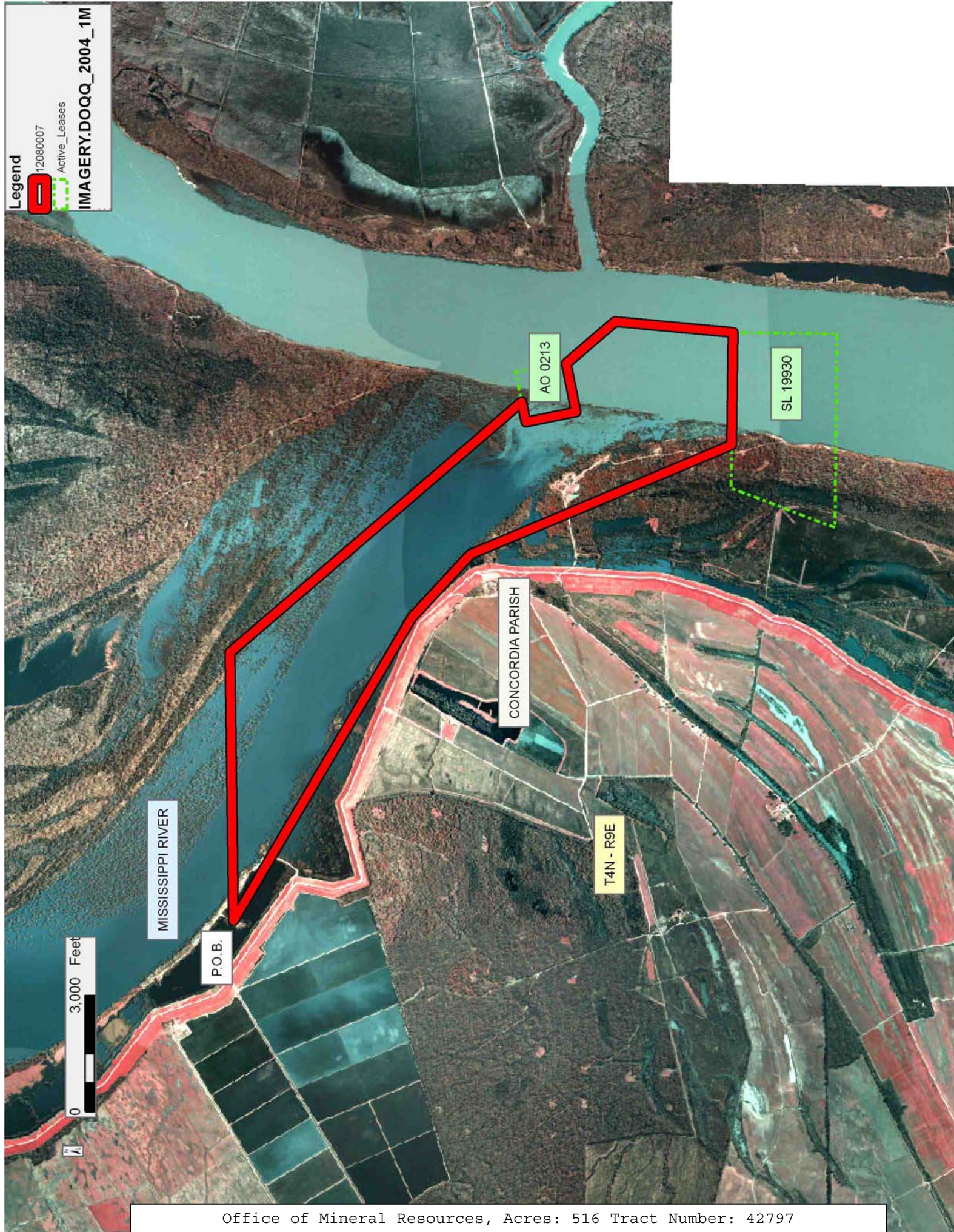
Bidder	Cash Payment	Price/Acre	Rental	Oil	Gas	Other

Legend

12080007

Active_Leases

IMAGERY.DOQQ_2004_1M



TRACT 42798 - Concordia Parish, Louisiana

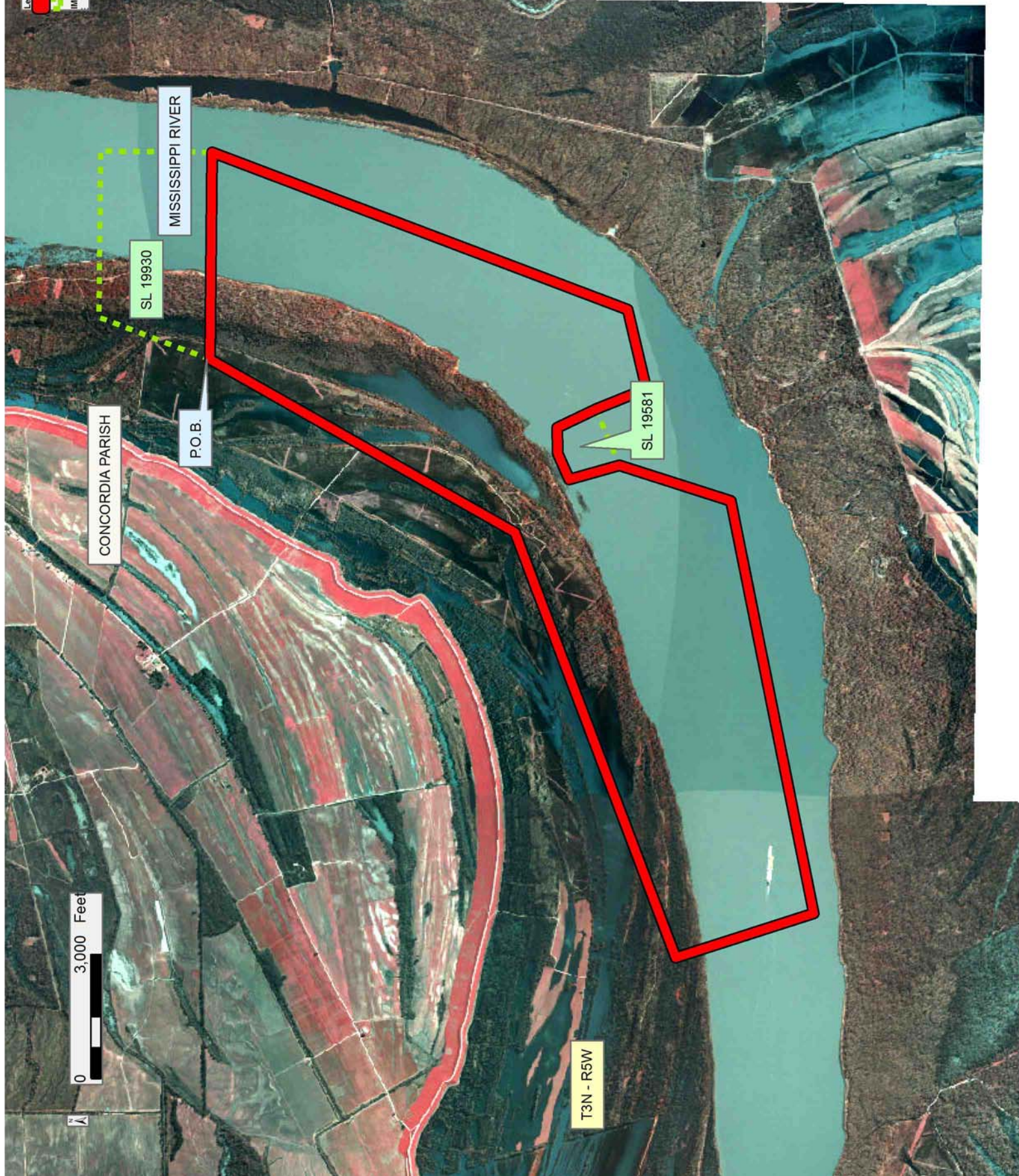
All of the lands now or formerly constituting the beds and bottoms of all water bodies of every nature and description as to which title is vested in the State of Louisiana, together with all islands arising therein and other lands formed by accretion or by reliction, where allowed by law, excepting tax adjudicated lands, and not presently under mineral lease on August 8, 2012, situated in Concordia Parish, Louisiana, and more particularly described as follows: Beginning at the Southwest corner of State Lease No. 19930 having Coordinates of X = 2,304,786.60 and Y = 230,911.90; thence East 5,001.66 feet along the South boundary of said State Lease No. 19930 to its Southeast corner having Coordinates of X = 2,309,788.26 and Y = 230,911.90; thence South 20 degrees 07 minutes 38 West 10,722.02 feet to a point having Coordinates of X = 2,306,098.76 and Y = 220,844.66; thence South 76 degrees 04 minutes 20 seconds West 1,967.22 feet to a point having Coordinates of X = 2,304,189.38 and Y = 220,371.15; thence North 22 degrees 41 minutes 28 seconds West 1,310.93 feet to the Southeast corner of State Lease No. 19581, as amended, having Coordinates of X = 2,303,683.67 and Y = 221,580.61; thence along the boundaries of said State Lease No. 19581 following courses: North 26 degrees 00 minutes 00 seconds West 1,040.01 feet to a point having Coordinates of X = 2,303,227.76 and Y = 222,515.36, South 88 degrees 30 minutes 00 seconds West 621.91 feet to a point having Coordinates of X = 2,302,606.06 and Y = 222,499.08, South 64 degrees 49 minutes 28 seconds West 684.61 feet to a point having Coordinates of X = 2,301,986.48 and Y = 222,207.85 and South 16 degrees 00 minutes 05 seconds East 1,248.97 feet to its Southwest corner having Coordinates of X = 2,302,330.77 and Y = 221,007.27; thence South 17 degrees 00 minutes 44 seconds West 2,826.22 feet to a point having Coordinates of X = 2,301,503.89 and Y = 218,304.72; thence South 78 degrees 03 minutes 24 seconds West 10,157.02 feet to a point having Coordinates of X = 2,291,566.75 and Y = 216,202.78; thence North 18 degrees 27 minutes 11 seconds West 3,493.65 feet to a point having Coordinates of X = 2,290,460.90 and Y = 219,516.80; thence North 68 degrees 41 minutes 40 seconds East 10,979.82 feet to a point having Coordinates of X = 2,300,690.31 and Y = 223,506.24; thence North 28 degrees 56 minutes 54 seconds East 8,463.06 feet to the point of beginning, **LESS AND EXCEPT** any of the above described tract that falls within the State of Mississippi, containing approximately **1075 acres**, all as more particularly outlined on a plat on file in the Office of Mineral Resources, Department of Natural Resources. All bearings, distances and coordinates are based on Louisiana Coordinate System of 1927, (North or South Zone), where applicable.

NOTE: The above description of the Tract nominated for lease has been provided and corrected, where required, exclusively by the nomination party. Any mineral lease selected from this Tract and awarded by the Louisiana State Mineral and Energy Board shall be without warranty of any kind, either express, implied, or statutory, including, but not limited to, the implied warranties of merchantability and fitness for a particular purpose. Should the mineral lease awarded by the Louisiana State Mineral

and Energy Board be subsequently modified, cancelled or abrogated due to the existence of conflicting leases, operating agreements, private claims or other future obligations or conditions which may affect all or any portion of the leased Tract, it shall not relieve the Lessee of the obligation to pay any bonus due thereon to the Louisiana State Mineral and Energy Board, nor shall the Louisiana State Mineral and Energy Board be obligated to refund any consideration paid by the Lessor prior to such modification, cancellation, or abrogation, including, but not limited to, bonuses, rentals and royalties.

Applicant: LESLIE M. COOPER

Bidder	Cash Payment	Price/Acre	Rental	Oil	Gas	Other



TRACT 42799 - West Feliciana Parish, Louisiana

All of the lands now or formerly constituting the beds and bottoms of all water bodies of every nature and description as to which title is vested in the State of Louisiana, together with all islands arising therein and other lands formed by accretion or by reliction, where allowed by law, excepting tax adjudicated lands, and not presently under mineral lease on August 8, 2012, situated in West Feliciana Parish, Louisiana, and more particularly described as follows: Beginning at a point having Coordinates of X = 1,925,361.14 and Y = 842,322.21; thence East approximately 3,944 feet to a point on the boundary of the Tunica Hills Wildlife Management Area having a Coordinate of Y = 842,322.21; thence Southerly along the West boundary of said Tunica Hills Wildlife Management Area to a point of intersection with a East-West line having a Coordinate of Y = 838,182.76; thence West approximately 3,961 feet to a point having Coordinates of X = 1,925,361.14 and Y = 838,182.76; thence North 4,139.45 feet to the point of beginning, **LESS AND EXCEPT** that portion, if any, of the above described tract that lies inside of the boundaries of the Tunica Hills Wildlife Management Area, containing **379 acres**, all as more particularly outlined on a plat on file in the Office of Mineral Resources, Department of Natural Resources. All bearings, distances and coordinates are based on Louisiana Coordinate System of 1927, (North or South Zone), where applicable.

NOTE: The above description of the Tract nominated for lease has been provided and corrected, where required, exclusively by the nomination party. Any mineral lease selected from this Tract and awarded by the Louisiana State Mineral and Energy Board shall be without warranty of any kind, either express, implied, or statutory, including, but not limited to, the implied warranties of merchantability and fitness for a particular purpose. Should the mineral lease awarded by the Louisiana State Mineral and Energy Board be subsequently modified, cancelled or abrogated due to the existence of conflicting leases, operating agreements, private claims or other future obligations or conditions which may affect all or any portion of the leased Tract, it shall not relieve the Lessee of the obligation to pay any bonus due thereon to the Louisiana State Mineral and Energy Board, nor shall the Louisiana State Mineral and Energy Board be obligated to refund any consideration paid by the Lessor prior to such modification, cancellation, or abrogation, including, but not limited to, bonuses, rentals and royalties.

NOTE: No surface operations without compliance with all conditions set forth and approved by the officials of Angola State Penitentiary.

Applicant: MARK A. O'NEAL & ASSOCIATES INC.

Bidder	Cash Payment	Price/Acre	Rental	Oil	Gas	Other

Legend

20800014

Wildlife

IMAGERY.DOQQ_2008_1M_CIR

WEST FELICIANA PARISH

T1S - R4W

TUNICA HILLS WMA

T1S - R5W

P.O.B.

0 2,000 Feet



TRACT 42800 - East Baton Rouge and West Baton Rouge Parishes, Louisiana

All of the lands now or formerly constituting the beds and bottoms of all water bodies of every nature and description as to which title is vested in the State of Louisiana, together with all islands arising therein and other lands formed by accretion or by reliction, where allowed by law, excepting tax adjudicated lands, and not presently under mineral lease on August 8, 2012, situated in East Baton Rouge and West Baton Rouge Parishes, Louisiana, and more particularly described as follows: Beginning at a point on the Southern boundary of State Lease No. 20737 having Coordinates of X = 2,006,261.55 and Y = 708,471.00; thence East 6,071.45 feet to a point being the Southeast corner of said State Lease No. 20737 having Coordinates of X = 2,012,333.00 and Y = 708,471.00; thence North 307.14 feet along the Eastern boundary of said State Lease No. 20737 to a point having Coordinates of X = 2,012,333.00 and Y = 708,778.14; thence East 12,408.55 feet to a point having Coordinates of X = 2,024,741.55 and Y = 708,778.14; thence South 18,480.00 feet to a point having Coordinates of X = 2,024,741.55 and Y = 690,298.14; thence West approximately 1,504 feet to a point on the East boundary of State Lease No. 14674, as amended; thence Northeasterly and Westerly along the boundaries of said State Lease No. 14674 to its Northwest corner and the Southeast corner of State Lease No. 18804, as amended having Coordinates of X = 2,018,238.35 and Y = 692,457.17; thence along the boundaries of said State Lease No. 18804 the following courses: North 08 degrees 06 minutes 54 seconds East 5,306.64 feet to a point having Coordinates of X = 2,018,987.42 and Y = 697,710.68, West 5,306.64 feet to a point having Coordinates of X = 2,013,680.79 and Y = 697,710.68, South 08 degrees 06 minutes 54 seconds West 5,306.64 feet to a point having Coordinates of X = 2,012,931.71 and Y = 692,456.17 and East 5,306.64 feet to its said Southeast corner having Coordinates of X = 2,018,238.35 and Y = 692,457.17; thence Southwesterly along the boundary of said State Lease No. 14674 approximately 2,181 feet to a point having a Y = 690,298.14; thence West approximately 11,669 feet to a point having Coordinates of X = 2,006,261.55 and Y = 690,298.14; thence North 18,172.86 feet to the point of beginning, (This tract includes only waterbottoms claimed and owned by the state and specifically excludes any land which the state may claim or own and to which the mineral rights are vested in the state), containing approximately **1888 acres**, all as more particularly outlined on a plat on file in the Office of Mineral Resources, Department of Natural Resources. All bearings, distances and coordinates are based on Louisiana Coordinate System of 1927, (North or South Zone), where applicable.

NOTE: The above description of the Tract nominated for lease has been provided and corrected, where required, exclusively by the nomination party. Any mineral lease selected from this Tract and awarded by the Louisiana State Mineral and Energy Board shall be without warranty of any kind, either express, implied, or statutory, including, but not limited to, the implied warranties of merchantability and fitness for a particular purpose. Should the mineral lease awarded by the Louisiana State Mineral and Energy Board be subsequently modified, cancelled or abrogated due to

the existence of conflicting leases, operating agreements, private claims or other future obligations or conditions which may affect all or any portion of the leased Tract, it shall not relieve the Lessee of the obligation to pay any bonus due thereon to the Louisiana State Mineral and Energy Board, nor shall the Louisiana State Mineral and Energy Board be obligated to refund any consideration paid by the Lessor prior to such modification, cancellation, or abrogation, including, but not limited to, bonuses, rentals and royalties.

Applicant: BARKER ENERGY

Bidder	Cash Payment	Price/Acre	Rental	Oil	Gas	Other

Legend
12086004
OIMR_ACTIVE_LEASES
IMAGERY.D00Q_2008_1M_CIR

MISSISSIPPI RIVER

SL 14674

SL 18804

SL 20737

P.O.B.

0 4,000 Feet

TRACT 42801 - Allen Parish, Louisiana

All of the lands now or formerly constituting the beds and bottoms of all water bodies of every nature and description as to which title is vested in the State of Louisiana, together with all islands arising therein and other lands formed by accretion or by reliction, where allowed by law, excepting tax adjudicated lands, and not presently under mineral lease on August 8, 2012, situated in Allen Parish, Louisiana, and more particularly described as follows: Beginning at a point having Coordinates of X = 1,552,242.28 and Y = 699,214.12; thence South 89 degrees 21 minutes 15 seconds East 7,758.21 feet to a point having Coordinates of X = 1,560,000.00 and Y = 699,126.68; thence South 5,326.69 feet to the Northwest corner of State Lease No. 20741 having Coordinates of X = 1,560,000.00 and Y = 693,800.00; thence South 1,000.00 feet along the West boundary of said State Lease No. 20741 to a point having Coordinates of X = 1,560,000.00 and Y = 692,800.00; thence West 7,849.06 feet to a point having Coordinates of X = 1,552,150.94 and Y = 692,800.00; thence North 00 degrees 48 minutes 57 seconds East 6,414.77 feet to the point of beginning, containing approximately **9.42 acres**, all as more particularly outlined on a plat on file in the Office of Mineral Resources, Department of Natural Resources. All bearings, distances and coordinates are based on Louisiana Coordinate System of 1927, (North or South Zone), where applicable.

NOTE: The above description of the Tract nominated for lease has been provided and corrected, where required, exclusively by the nomination party. Any mineral lease selected from this Tract and awarded by the Louisiana State Mineral and Energy Board shall be without warranty of any kind, either express, implied, or statutory, including, but not limited to, the implied warranties of merchantability and fitness for a particular purpose. Should the mineral lease awarded by the Louisiana State Mineral and Energy Board be subsequently modified, cancelled or abrogated due to the existence of conflicting leases, operating agreements, private claims or other future obligations or conditions which may affect all or any portion of the leased Tract, it shall not relieve the Lessee of the obligation to pay any bonus due thereon to the Louisiana State Mineral and Energy Board, nor shall the Louisiana State Mineral and Energy Board be obligated to refund any consideration paid by the Lessor prior to such modification, cancellation, or abrogation, including, but not limited to, bonuses, rentals and royalties.

Applicant: HAROLD J. ANDERSON, INC.

Bidder	Cash Payment	Price/Acre	Rental	Oil	Gas	Other

Legend

12080073



Active_Leases



IMAGERY.DOQQ_2008_1M_CIR

0 2,000 Feet



ALLEN PARISH

T5S - R4W

P.O.B.



SL 20741

BAYOU BLUE

T6S - R4W