

TRACT 42802 - Allen Parish, Louisiana

All of the lands now or formerly constituting the beds and bottoms of all water bodies of every nature and description as to which title is vested in the State of Louisiana, together with all islands arising therein and other lands formed by accretion or by reliction, where allowed by law, excepting tax adjudicated lands, and not presently under mineral lease on August 8, 2012, situated in Allen Parish, Louisiana, and more particularly described as follows: Beginning at a point having Coordinates of X = 1,550,651.46 and Y = 689,241.94; thence East 9,348.54 feet to a point on the West boundary of State Lease No. 20741 having Coordinates of X = 1,560,000.00 and Y = 689,241.94; thence South 3,441.94 feet along the West boundary of said State Lease No. 20741 to its Southwest corner having Coordinates of X = 1,560,000.00 and Y = 685,800.00; thence South 7,820.01 feet a point having Coordinates of X = 1,560,000.00 and Y = 677,979.99; thence West 9,348.54 feet to a point having Coordinates of X = 1,550,651.46 and Y = 677,979.99; thence North 11,261.95 feet to the point of beginning, containing approximately **20.21 acres**, all as more particularly outlined on a plat on file in the Office of Mineral Resources, Department of Natural Resources. All bearings, distances and coordinates are based on Louisiana Coordinate System of 1927, (North or South Zone), where applicable.

NOTE: The above description of the Tract nominated for lease has been provided and corrected, where required, exclusively by the nomination party. Any mineral lease selected from this Tract and awarded by the Louisiana State Mineral and Energy Board shall be without warranty of any kind, either express, implied, or statutory, including, but not limited to, the implied warranties of merchantability and fitness for a particular purpose. Should the mineral lease awarded by the Louisiana State Mineral and Energy Board be subsequently modified, cancelled or abrogated due to the existence of conflicting leases, operating agreements, private claims or other future obligations or conditions which may affect all or any portion of the leased Tract, it shall not relieve the Lessee of the obligation to pay any bonus due thereon to the Louisiana State Mineral and Energy Board, nor shall the Louisiana State Mineral and Energy Board be obligated to refund any consideration paid by the Lessor prior to such modification, cancellation, or abrogation, including, but not limited to, bonuses, rentals and royalties.

Bidder	Cash Payment	Price/Acre	Rental	Oil	Gas	Other

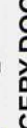
Applicant: HAROLD J. ANDERSON, INC.

Legend

12080074



Active_Leases



IMAGERY.DOQQ_2008_1M_CIR

0 3,000 Feet



ALLEN PARISH

T6S - R4W

P.O.B.

SL 20741

T6S - R3W

BAYOU BLUE

TRACT 42803 - Allen Parish, Louisiana

All of the lands now or formerly constituting the beds and bottoms of all water bodies of every nature and description as to which title is vested in the State of Louisiana, together with all islands arising therein and other lands formed by accretion or by reliction, where allowed by law, excepting tax adjudicated lands, and not presently under mineral lease on August 8, 2012, situated in Allen Parish, Louisiana, and more particularly described as follows: Beginning at a point having Coordinates of X = 1,551,907.44 and Y = 677,979.99; thence East 8,092.56 feet to a point having Coordinates of X = 1,560,000.00 and Y = 677,979.99; thence South 10,532.13 feet to a point having Coordinates of X = 1,560,000.00 and Y = 667,447.85; thence West 8,092.56 feet to a point having Coordinates of X = 1,551,907.44 and Y = 667,447.85; thence North 10,532.13 feet to the point of beginning, containing approximately **27.36 acres**, all as more particularly outlined on a plat on file in the Office of Mineral Resources, Department of Natural Resources. All bearings, distances and coordinates are based on Louisiana Coordinate System of 1927, (North or South Zone), where applicable.

NOTE: The above description of the Tract nominated for lease has been provided and corrected, where required, exclusively by the nomination party. Any mineral lease selected from this Tract and awarded by the Louisiana State Mineral and Energy Board shall be without warranty of any kind, either express, implied, or statutory, including, but not limited to, the implied warranties of merchantability and fitness for a particular purpose. Should the mineral lease awarded by the Louisiana State Mineral and Energy Board be subsequently modified, cancelled or abrogated due to the existence of conflicting leases, operating agreements, private claims or other future obligations or conditions which may affect all or any portion of the leased Tract, it shall not relieve the Lessee of the obligation to pay any bonus due thereon to the Louisiana State Mineral and Energy Board, nor shall the Louisiana State Mineral and Energy Board be obligated to refund any consideration paid by the Lessor prior to such modification, cancellation, or abrogation, including, but not limited to, bonuses, rentals and royalties.

Applicant: HAROLD J. ANDERSON, INC.

Bidder	Cash Payment	Price/Acre	Rental	Oil	Gas	Other

Legend

12080075

IMAGERY.DOQQ_2008_1M_CIR

ALLEN PARISH

T6S - R3W

BAYOU BLUE

P.O.B.

T6S - R4W

0 3,000 Feet



TRACT 42804 - Allen and Jefferson Davis Parishes, Louisiana

All of the lands now or formerly constituting the beds and bottoms of all water bodies of every nature and description as to which title is vested in the State of Louisiana, together with all islands arising therein and other lands formed by accretion or by reliction, where allowed by law, excepting tax adjudicated lands, and not presently under mineral lease on August 8, 2012, situated in Allen and Jefferson Davis Parishes, Louisiana, and more particularly described as follows: Beginning at a point having Coordinates of X = 1,557,089.52 and Y = 667,447.85; thence East 10,748.82 feet to a point having Coordinates of X = 1,567,838.33 and Y = 667,447.85; thence South 4,707.07 feet to a point having Coordinates of X = 1,567,838.33 and Y = 662,740.79; thence West 10,748.82 feet to a point having Coordinates of X = 1,557,089.52 and Y = 662,740.79; thence North 4,707.07 feet to the point of beginning, containing approximately **9.86 acres**, all as more particularly outlined on a plat on file in the Office of Mineral Resources, Department of Natural Resources. All bearings, distances and coordinates are based on Louisiana Coordinate System of 1927, (North or South Zone), where applicable.

NOTE: The above description of the Tract nominated for lease has been provided and corrected, where required, exclusively by the nomination party. Any mineral lease selected from this Tract and awarded by the Louisiana State Mineral and Energy Board shall be without warranty of any kind, either express, implied, or statutory, including, but not limited to, the implied warranties of merchantability and fitness for a particular purpose. Should the mineral lease awarded by the Louisiana State Mineral and Energy Board be subsequently modified, cancelled or abrogated due to the existence of conflicting leases, operating agreements, private claims or other future obligations or conditions which may affect all or any portion of the leased Tract, it shall not relieve the Lessee of the obligation to pay any bonus due thereon to the Louisiana State Mineral and Energy Board, nor shall the Louisiana State Mineral and Energy Board be obligated to refund any consideration paid by the Lessor prior to such modification, cancellation, or abrogation, including, but not limited to, bonuses, rentals and royalties.

Applicant: HAROLD J. ANDERSON, INC.

Bidder	Cash Payment	Price/Acre	Rental	Oil	Gas	Other

Legend

12080076

Counties

IMAGERY.DOQQ_2008_1M_CIR



ALLEN PARISH

T6S - R3W

BAYOU BLUE

P.O.B.

JEFFERSON DAVIS PARISH

T7S - R4W

0 3,000 Feet



TRACT 42805 - Calcasieu Parish, Louisiana

All of the lands now or formerly constituting the beds and bottoms of all water bodies of every nature and description as to which title is vested in the State of Louisiana, together with all islands arising therein and other lands formed by accretion or by reliction, where allowed by law, excepting tax adjudicated lands, and not presently under mineral lease on August 8, 2012, situated in Calcasieu Parish, Louisiana, and more particularly described as follows: Beginning at a point having Coordinates of X = 1,412,778.04 and Y = 594,033.86; thence North 5,582.51 feet to the Southwest corner of State Lease No. 20911 having Coordinates of X = 1,412,778.04 and Y = 599,616.37; thence East 11,814.29 feet along the South line of said State Lease No. 20911 to the Northwest corner of State Lease No. 15685 having Coordinates of X = 1,424,592.33 and Y = 599,616.37; thence along the boundary of said State Lease No. 15685 the following courses: South 916.37 feet to a point having Coordinates of X = 1,424,592.33 and Y = 598,700.00 and East 438.71 feet to a point on the West line of State Lease No. 15774 having Coordinates of X = 1,425,031.04 and Y = 598,700.00; thence along the boundary of said State Lease No. 15774 the following courses: South 1,723.63 feet to a point having Coordinates of X = 1,425,031.04 and Y = 596,976.37; East 2,201.29 feet to a point having Coordinates of X = 1,427,232.33 and Y = 596,976.37 and North 2,640.00 feet to a point on the South line of said State Lease No. 20911 having Coordinates of X = 1,427,232.33 and Y = 599,616.37; thence East 3,013.62 feet along the South line of said State Lease No. 20911 to a point on the West line of State Lease No. 20675 having Coordinates of X = 1,430,245.95 and Y = 599,616.37; thence South 4,471.90 feet along the West line of said State Lease No. 20675 to the Northeast corner of a portion of State Lease No. 18560, as amended, having Coordinates of X = 1,430,245.95 and Y = 595,144.47; thence along the boundary of said State Lease No. 18560 the following courses: South 83 degrees 45 minutes 55 seconds West 399.65 feet to a point having Coordinates of X = 1,429,848.66 and Y = 595,101.06 and South 05 degrees 22 minutes 46 seconds West 113.75 feet to a point having Coordinates of X = 1,429,838.00 and Y = 594,987.82; thence South 83 degrees 39 minutes 57 seconds West 995.06 feet to a point having Coordinates of X = 1,428,849.01 and Y = 594,878.03; thence South 844.17 feet to a point having Coordinates of X = 1,428,849.01 and Y = 594,033.86; thence West 16,070.97 feet to the point of beginning, **LESS AND EXCEPT** those portions of State Lease No. 18560 that lie within the above described tract and being more fully described as follows: (Portion No. 1) Beginning at a point having Coordinates of X = 1,428,522.94 and Y = 595,799.25; thence North 364.15 feet to a point; North 48 degrees 27 minutes 12 seconds East 237.03 feet to a point; North 52 degrees 33 minutes 55 seconds East 59.75 feet to a point; thence along a curve to the left and an arc length of 549.97 feet, with a radius of 2,965.45 feet, with a chord bearing of North 72 degrees 11 minutes 17 seconds East, with a chord length of 549.19 feet to a point; thence North 65 degrees 43 minutes 10 seconds East 391.00 feet to a point; thence along a curve to the right and an arc length of 319.50 feet, with a radius of 916.29 feet, with a chord bearing of North 77 degrees 41 minutes 31 seconds East, with

a chord length of 317.89 feet to a point; thence along a curve to the right and an arc length of 254.91 feet, with a radius of 147.37 feet, with a chord bearing of South 44 degrees 44 minutes 28 seconds East, with a chord length of 224.30 feet to a point; thence along a curve to the right with an arc length of 145.15 feet, with a radius of 226.47 feet, with a chord bearing of South 16 degrees 42 minutes 27 seconds W, with a chord length of 142.68 feet to a point; thence South 30 degrees 36 minutes 15 seconds West 199.55 feet to a point; thence North 33 degrees 55 minutes 56 seconds West 88.23 feet to a point; thence North 39 degrees 19 minutes 02 seconds West 275.70 feet to a point; thence North 69 degrees 56 minutes 38 seconds West 112.42 feet to a point; thence North 85 degrees 06 minutes 01 seconds West 129.76 feet to a point; thence South 56 degrees 50 minutes 27 seconds West 227.09 feet to a point; thence South 47 degrees 21 minutes 11 seconds West 522.99 feet to a point; thence South 49 degrees 23 minutes 46 seconds West 430.17 feet to a point; thence South 47 degrees 24 minutes 19 seconds West 94.76 feet to the point of beginning; and (Portion No. 2) Beginning at a point having Coordinates of X = 1,428,522.94 and Y = 595,010.74; thence North 183.35 feet to a point; North 81 degrees 30 minutes 26 seconds East 60.92 feet to a point; thence North 79 degrees 53 minutes 28 seconds East 132.24 feet to a point; thence North 69 degrees 23 minutes 59 seconds East 230.88 feet to a point; thence North 57 degrees 36 minutes 05 seconds East 290.81 feet to a point; thence North 43 degrees 08 minutes 10 seconds East 201.62 feet to a point; thence North 34 degrees 39 minutes 55 seconds East 252.87 feet to a point; thence North 61 degrees 18 minutes 24 seconds East 239.97 feet to a point; thence North 85 degrees 21 minutes 14 seconds East 48.37 feet to a point; thence South 33 degrees 22 minutes 49 seconds West 259.05 feet to a point; thence South 76 degrees 16 minutes 52 seconds West 164.50 feet to a point; thence South 00 degrees 57 minutes 52 seconds West 412.14 feet to a point; thence along a curve to the right and an arc length of 891.23 feet, with a radius of 1,714.35 feet, with a chord bearing of South 73 degrees 01 minutes 45 seconds W, with a chord length of 881.23 feet to a point; thence South 86 degrees 50 minutes 14 seconds West 40.44 feet to the point of beginning; and **LESS AND EXCEPT** those portions of State Lease No. 18561 that lie within the above described tract and being more fully described as follows: (Portion No. 1) Beginning at a point having Coordinates of X = 1,428,522.94 and Y = 596,163.40; South 364.15 feet; South 47 degrees 24 minutes 19 seconds West 109.81 feet; South 36 degrees 25 minutes 35 seconds West 164.77 feet; North 28 degrees 56 minutes 18 seconds East 159.95 feet; North 35 degrees 03 minutes 39 seconds East 89.98 feet; North 31 degrees 48 minutes 08 seconds East 31.24 feet; thence along a curve to the left and an arc length of 72.90 feet, with a radius of 50.52 feet, with a chord bearing of North 12 degrees 44 minutes 09 seconds West, with a chord length of 66.74 feet; thence along a curve to the left and an arc length of 179.03 feet, with a radius of 317.07 feet, with a chord bearing of North 65 degrees 41 minutes 53 seconds West, with a chord length of 176.66 feet; North 36 degrees 06 minutes 25 seconds East 27.98 feet; and North 48 degrees 27 minutes 12 seconds East 257.02 feet to the point of beginning, (Portion No. 2) Beginning at a point having Coordinates of X = 1,428,294.22 and Y =

595,368.77; thence South 00 degrees 36 minutes 23 seconds West 209.18 feet; thence North 81 degrees 30 minutes 26 seconds East 70.88 feet; North 31 degrees 05 minutes 30 seconds West 67.02 feet; North 13 degrees 15 minutes 03 seconds West 145.18 feet to the point of beginning; and (Portion No. 3) Beginning at a point having Coordinates of X = 1,428,522.94 and Y = 595,194.08; thence South 181.26 feet to a point; thence South 84 degrees 52 minutes 25 seconds West 60.88 feet to a point; thence North 00 degrees 59 minutes 38 seconds East 178.14 feet to a point; and thence North 81 degrees 30 minutes 26 seconds East 58.18 feet to the point of beginning; nominated tract containing approximately **467 acres**, all as more particularly outlined on a plat on file in the Office of Mineral Resources, Department of Natural Resources. All bearings, distances and coordinates are based on Louisiana Coordinate System of 1927, (North or South Zone), where applicable.

NOTE: The above description of the Tract nominated for lease has been provided and corrected, where required, exclusively by the nomination party. Any mineral lease selected from this Tract and awarded by the Louisiana State Mineral and Energy Board shall be without warranty of any kind, either express, implied, or statutory, including, but not limited to, the implied warranties of merchantability and fitness for a particular purpose. Should the mineral lease awarded by the Louisiana State Mineral and Energy Board be subsequently modified, cancelled or abrogated due to the existence of conflicting leases, operating agreements, private claims or other future obligations or conditions which may affect all or any portion of the leased Tract, it shall not relieve the Lessee of the obligation to pay any bonus due thereon to the Louisiana State Mineral and Energy Board, nor shall the Louisiana State Mineral and Energy Board be obligated to refund any consideration paid by the Lessor prior to such modification, cancellation, or abrogation, including, but not limited to, bonuses, rentals and royalties.

Applicant: MOUNTAIN LAKE ENERGY

Bidder	Cash Payment	Price/Acre	Rental	Oil	Gas	Other

Legend

12080136

Active_Leases

IMAGERY.DOQQ_2008_1M_CIR

0 3,000 Feet

CALCASIEU PARISH

T9S - R8W

SL 20911

SL 15685

SL 15774

SL 18560

SL 18561

P.O.B.

SL 20675

CALCASIEU RIVER

SL 18560

TRACT 42806 - Ascension and Iberville Parishes, Louisiana

All of the lands now or formerly constituting the beds and bottoms of all water bodies of every nature and description as to which title is vested in the State of Louisiana, together with all islands arising therein and other lands formed by accretion or by reliction, where allowed by law, excepting tax adjudicated lands, and not presently under mineral lease on August 8, 2012, situated in Ascension and Iberville Parishes, Louisiana, and more particularly described as follows: Beginning at a point having Coordinates of X = 2,086,065.00 and Y = 583,936.04; thence East 6,560.94 feet to the Southwest corner of Operating Agreement No. A0314 having Coordinates of X = 2,092,625.94 and Y = 583,936.04; thence North 89 degrees 45 minutes 00 seconds East 500.00 feet along the boundary of said Operating Agreement No. A0314 to its Southeast corner having Coordinates of X = 2,093,125.94 and Y = 583,938.23; thence East 1,099.06 feet to a point having Coordinates of X = 2,094,225.00 and Y = 583,938.23; thence South 7,123.23 feet to a point having Coordinates of X = 2,094,225.00 and Y = 576,815.00; thence West 8,160.00 feet to a point having Coordinates of X = 2,086,065.00 and Y = 576,815.00; thence North 7,121.04 feet to the point of beginning, containing approximately **13 acres**, all as more particularly outlined on a plat on file in the Office of Mineral Resources, Department of Natural Resources. All bearings, distances and coordinates are based on Louisiana Coordinate System of 1927, (North or South Zone), where applicable.

NOTE: The above description of the Tract nominated for lease has been provided and corrected, where required, exclusively by the nomination party. Any mineral lease selected from this Tract and awarded by the Louisiana State Mineral and Energy Board shall be without warranty of any kind, either express, implied, or statutory, including, but not limited to, the implied warranties of merchantability and fitness for a particular purpose. Should the mineral lease awarded by the Louisiana State Mineral and Energy Board be subsequently modified, cancelled or abrogated due to the existence of conflicting leases, operating agreements, private claims or other future obligations or conditions which may affect all or any portion of the leased Tract, it shall not relieve the Lessee of the obligation to pay any bonus due thereon to the Louisiana State Mineral and Energy Board, nor shall the Louisiana State Mineral and Energy Board be obligated to refund any consideration paid by the Lessor prior to such modification, cancellation, or abrogation, including, but not limited to, bonuses, rentals and royalties.

Applicant: WOODLAND PETROLEUM CORPORATION

Bidder	Cash Payment	Price/Acre	Rental	Oil	Gas	Other

Legend

12080072

Active_Leases

Counties

IMAGERY.DOQQ_2008_1M_CIR

ASCENSION PARISH

AO 0314

IBERVILLE PARISH

T9S - R2E

BAYOU BRAUD

P.O.B.

0 2,000 Feet

TRACT 42807 - Ascension and Iberville Parishes, Louisiana

All of the lands now or formerly constituting the beds and bottoms of all water bodies of every nature and description as to which title is vested in the State of Louisiana, together with all islands arising therein and other lands formed by accretion or by reliction, where allowed by law, excepting tax adjudicated lands, and not presently under mineral lease on August 8, 2012, situated in Ascension and Iberville Parishes, Louisiana, and more particularly described as follows: Beginning at a point having Coordinates of X = 2,081,985.00 and Y = 576,815.00; thence East 8,160.00 feet to a point having Coordinates of X = 2,090,145.00 and Y = 576,815.00; thence South 7,125.00 feet to a point having Coordinates of X = 2,090,145.00 and Y = 569,690.00; thence West 8,160.00 feet to a point having Coordinates of X = 2,081,985.00 and Y = 569,690.00; thence North 7,125.00 feet to the point of beginning, containing approximately **10 acres**, all as more particularly outlined on a plat on file in the Office of Mineral Resources, Department of Natural Resources. All bearings, distances and coordinates are based on Louisiana Coordinate System of 1927, (North or South Zone), where applicable.

NOTE: The above description of the Tract nominated for lease has been provided and corrected, where required, exclusively by the nomination party. Any mineral lease selected from this Tract and awarded by the Louisiana State Mineral and Energy Board shall be without warranty of any kind, either express, implied, or statutory, including, but not limited to, the implied warranties of merchantability and fitness for a particular purpose. Should the mineral lease awarded by the Louisiana State Mineral and Energy Board be subsequently modified, cancelled or abrogated due to the existence of conflicting leases, operating agreements, private claims or other future obligations or conditions which may affect all or any portion of the leased Tract, it shall not relieve the Lessee of the obligation to pay any bonus due thereon to the Louisiana State Mineral and Energy Board, nor shall the Louisiana State Mineral and Energy Board be obligated to refund any consideration paid by the Lessor prior to such modification, cancellation, or abrogation, including, but not limited to, bonuses, rentals and royalties.

Applicant: WOODLAND PETROLEUM CORPORATION

Bidder	Cash Payment	Price/Acre	Rental	Oil	Gas	Other

Legend
12080071
Counties

IMAGERY.DOQQ_2008_1M_CIR

ASCENSION PARISH

T9S - R2E

T9S - R1E

IBERVILLE PARISH

P.O.B.

BAYOU BRAUD

2,000 Feet

TRACT 42808 - Acadia and Lafayette Parishes, Louisiana

All of the lands now or formerly constituting the beds and bottoms of all water bodies of every nature and description as to which title is vested in the State of Louisiana, together with all islands arising therein and other lands formed by accretion or by reliction, where allowed by law, excepting tax adjudicated lands, and not presently under mineral lease on August 8, 2012, situated in Acadia and Lafayette Parishes, Louisiana, and more particularly described as follows: Beginning at a point being the Northeast corner of State Lease No. 20920 having Coordinates of X = 1,712,400.00 and Y = 559,400.00; thence West 5,200.00 feet along the Northern boundary of said State Lease No. 20920 to a point being its Northwest corner having Coordinates of X = 1,707,200.00 and Y = 559,400.00; thence North 3,600.00 feet to a point having Coordinates of X = 1,707,200.00 and Y = 563,000.00; thence East 3,756.58 feet to a point on the Western boundary of State Lease No. 20595 having Coordinates of X = 1,710,956.58 and Y = 563,000.00; thence along the boundary of said State Lease No. 20595 the following courses: South 50 degrees 02 minutes 56 seconds West 152.07 feet to a point having Coordinates of X = 1,710,840.00 and Y = 562,902.35; South 72 degrees 47 minutes 45 seconds East 1,267.51 feet to a point having Coordinates of X = 1,712,050.80 and Y = 562,527.45; and North 48 degrees 48 minutes 48 seconds East 464.00 feet to a point having Coordinates of X = 1,712,400.00 and Y = 562,833.01; thence South 3,433.01 feet to the point of beginning, containing approximately **5 acres**, all as more particularly outlined on a plat on file in the Office of Mineral Resources, Department of Natural Resources. All bearings, distances and coordinates are based on Louisiana Coordinate System of 1927, (North or South Zone), where applicable.

NOTE: The above description of the Tract nominated for lease has been provided and corrected, where required, exclusively by the nomination party. Any mineral lease selected from this Tract and awarded by the Louisiana State Mineral and Energy Board shall be without warranty of any kind, either express, implied, or statutory, including, but not limited to, the implied warranties of merchantability and fitness for a particular purpose. Should the mineral lease awarded by the Louisiana State Mineral and Energy Board be subsequently modified, cancelled or abrogated due to the existence of conflicting leases, operating agreements, private claims or other future obligations or conditions which may affect all or any portion of the leased Tract, it shall not relieve the Lessee of the obligation to pay any bonus due thereon to the Louisiana State Mineral and Energy Board, nor shall the Louisiana State Mineral and Energy Board be obligated to refund any consideration paid by the Lessor prior to such modification, cancellation, or abrogation, including, but not limited to, bonuses, rentals and royalties.

NOTE: The Office of Mineral Resources will require a minimum bonus of \$250 per acre and a minimum royalty of 24%.

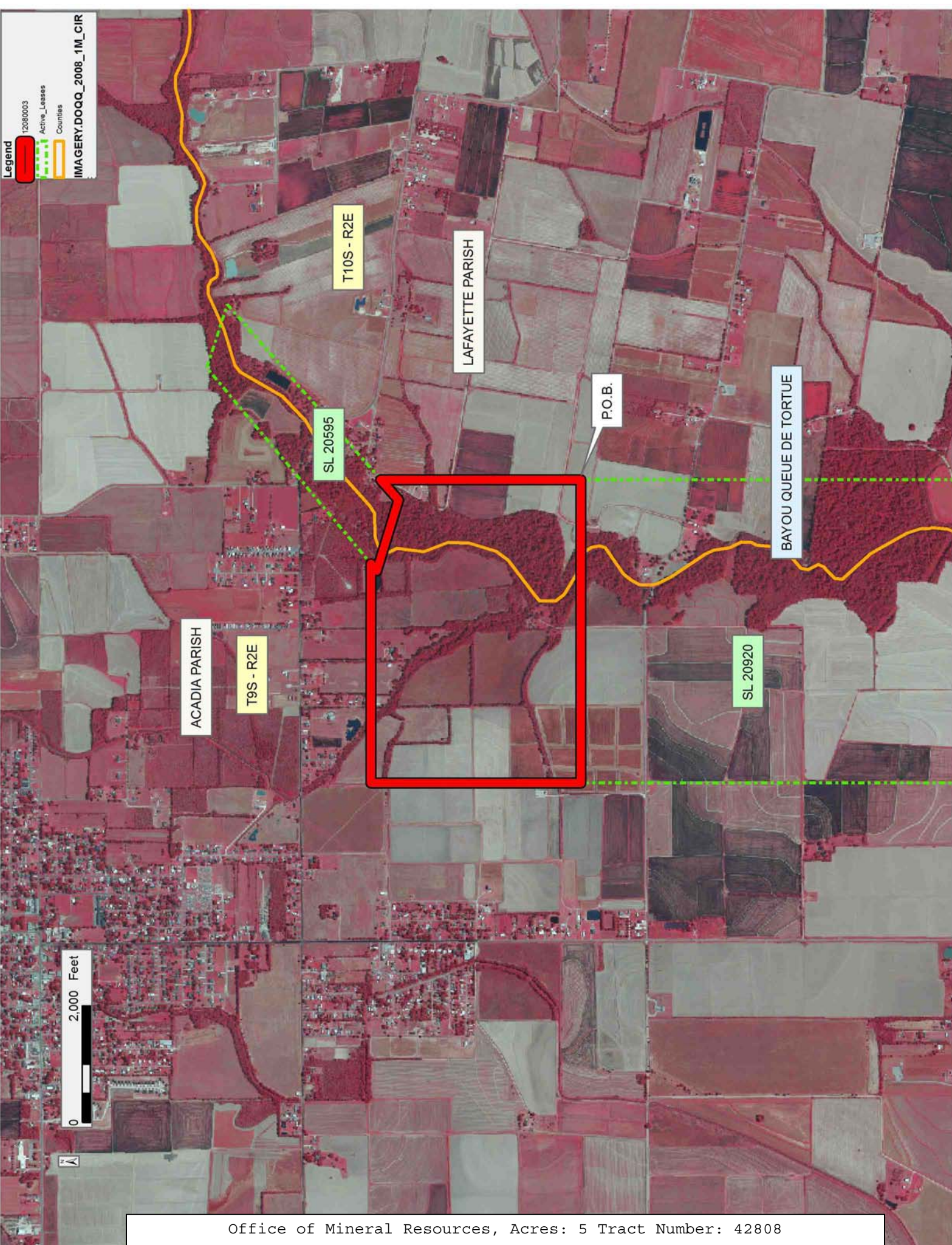
Applicant: STAFF OFFICE OF MINERAL RESOURCES

Bidder	Cash Payment	Price/Acre	Rental	Oil	Gas	Other

Legend

- 12080003
- Active_Leases
- Courtils

IMAGERY.DOQQ_2008_1M_CIR



TRACT 42809 - St. James Parish, Louisiana

All of the lands now or formerly constituting the beds and bottoms of all water bodies of every nature and description as to which title is vested in the State of Louisiana, together with all islands arising therein and other lands formed by accretion or by reliction, where allowed by law, excepting tax adjudicated lands, and not presently under mineral lease on August 8, 2012, situated in St. James Parish, Louisiana, and more particularly described as follows: Beginning at a point having Coordinates of X = 2,170,190.00 and Y = 497,680.00; thence East 8,000.00 feet to a point having Coordinates of X = 2,178,190.00 and Y = 497,680.00; thence South 18,480.00 feet to a point having Coordinates of X = 2,178,190.00 and Y = 479,200.00; thence West 8,000.00 feet to a point having Coordinates of X = 2,170,190.00 and Y = 479,200.00; thence North 18,480.00 feet to the Point of Beginning, containing approximately **728 acres**, all as more particularly outlined on a plat on file in the Office of Mineral Resources, Department of Natural Resources. All bearings, distances and coordinates are based on Louisiana Coordinate System of 1927, (North or South Zone), where applicable.

NOTE: The above description of the Tract nominated for lease has been provided and corrected, where required, exclusively by the nomination party. Any mineral lease selected from this Tract and awarded by the Louisiana State Mineral and Energy Board shall be without warranty of any kind, either express, implied, or statutory, including, but not limited to, the implied warranties of merchantability and fitness for a particular purpose. Should the mineral lease awarded by the Louisiana State Mineral and Energy Board be subsequently modified, cancelled or abrogated due to the existence of conflicting leases, operating agreements, private claims or other future obligations or conditions which may affect all or any portion of the leased Tract, it shall not relieve the Lessee of the obligation to pay any bonus due thereon to the Louisiana State Mineral and Energy Board, nor shall the Louisiana State Mineral and Energy Board be obligated to refund any consideration paid by the Lessor prior to such modification, cancellation, or abrogation, including, but not limited to, bonuses, rentals and royalties.

NOTE: The State of Louisiana does hereby reserve, and this lease shall be subject to, the imprescriptible right of surface use in the nature of a servitude in favor of the Department of Natural Resources, including its Offices and Commissions, for the sole purpose of implementing, constructing, servicing and maintaining approved coastal zone management and/or restoration projects. Utilization of any and all rights derived under this lease by the mineral lessee, its agents, successors or assigns, shall not interfere with nor hinder the reasonable surface use by the Department of Natural Resources, its Offices or Commissions, as herein above reserved.

Applicant: BASIN PROPERTIES, INC.

Bidder	Cash Payment	Price/Acre	Rental	Oil	Gas	Other

Legend

12080009

IMAGERY.DOQQ_2008_1M_CIR

ST JAMES PARISH

MISSISSIPPI RIVER

T12S - R17E

T13S - R17E

P.O.B.

T12S - R16E

0 4,000 Feet

TRACT 42810 - St. James Parish, Louisiana

All of the lands now or formerly constituting the beds and bottoms of all water bodies of every nature and description as to which title is vested in the State of Louisiana, together with all islands arising therein and other lands formed by accretion or by reliction, where allowed by law, excepting tax adjudicated lands, and not presently under mineral lease on August 8, 2012, situated in St. James Parish, Louisiana, and more particularly described as follows: Beginning at a point having Coordinates of X = 2,186,190.00 and Y = 497,680.00; thence South 18,480.00 feet to a point having Coordinates of X = 2,186,190.00 and Y = 479,200.00; thence West 8,000.00 feet to a point having Coordinates of X = 2,178,190.00 and Y = 479,200.00; thence North 18,480.00 feet to a point having Coordinates of X = 2,178,190.00 and Y = 497,680.00; thence East 8,000.00 feet to the Point of Beginning, containing approximately **455 acres**, all as more particularly outlined on a plat on file in the Office of Mineral Resources, Department of Natural Resources. All bearings, distances and coordinates are based on Louisiana Coordinate System of 1927, (North or South Zone), where applicable.

NOTE: The above description of the Tract nominated for lease has been provided and corrected, where required, exclusively by the nomination party. Any mineral lease selected from this Tract and awarded by the Louisiana State Mineral and Energy Board shall be without warranty of any kind, either express, implied, or statutory, including, but not limited to, the implied warranties of merchantability and fitness for a particular purpose. Should the mineral lease awarded by the Louisiana State Mineral and Energy Board be subsequently modified, cancelled or abrogated due to the existence of conflicting leases, operating agreements, private claims or other future obligations or conditions which may affect all or any portion of the leased Tract, it shall not relieve the Lessee of the obligation to pay any bonus due thereon to the Louisiana State Mineral and Energy Board, nor shall the Louisiana State Mineral and Energy Board be obligated to refund any consideration paid by the Lessor prior to such modification, cancellation, or abrogation, including, but not limited to, bonuses, rentals and royalties.

NOTE: The State of Louisiana does hereby reserve, and this lease shall be subject to, the imprescriptible right of surface use in the nature of a servitude in favor of the Department of Natural Resources, including its Offices and Commissions, for the sole purpose of implementing, constructing, servicing and maintaining approved coastal zone management and/or restoration projects. Utilization of any and all rights derived under this lease by the mineral lessee, its agents, successors or assigns, shall not interfere with nor hinder the reasonable surface use by the Department of Natural Resources, its Offices or Commissions, as herein above reserved.

Applicant: BASIN PROPERTIES, INC.

Bidder	Cash Payment	Price/Acre	Rental	Oil	Gas	Other

Legend

12080010



IMAGERY.DOQQ_2008_1M_CIR

ST JAMES PARISH

P.O.B.

MISSISSIPPI RIVER

T12S - R17E



4,000 Feet

0



TRACT 42811 - St. James Parish, Louisiana

All of the lands now or formerly constituting the beds and bottoms of all water bodies of every nature and description as to which title is vested in the State of Louisiana, together with all islands arising therein and other lands formed by accretion or by reliction, where allowed by law, excepting tax adjudicated lands, and not presently under mineral lease on August 8, 2012, situated in St. James Parish, Louisiana, and more particularly described as follows: Beginning at a point having Coordinates of X = 2,186,190.00 and Y = 497,680.00; thence East 8,000.00 feet to a point having Coordinates of X = 2,194,190.00 and Y = 497,680.00; thence South 18,480.00 feet to a point having Coordinates of X = 2,194,190.00 and Y = 479,200.00; thence West 8,000.00 feet to a point having Coordinates of X = 2,186,190.00 and Y = 479,200.00; thence North 18,480.00 feet to the Point of Beginning, containing approximately **480 acres**, all as more particularly outlined on a plat on file in the Office of Mineral Resources, Department of Natural Resources. All bearings, distances and coordinates are based on Louisiana Coordinate System of 1927, (North or South Zone), where applicable.

NOTE: The above description of the Tract nominated for lease has been provided and corrected, where required, exclusively by the nomination party. Any mineral lease selected from this Tract and awarded by the Louisiana State Mineral and Energy Board shall be without warranty of any kind, either express, implied, or statutory, including, but not limited to, the implied warranties of merchantability and fitness for a particular purpose. Should the mineral lease awarded by the Louisiana State Mineral and Energy Board be subsequently modified, cancelled or abrogated due to the existence of conflicting leases, operating agreements, private claims or other future obligations or conditions which may affect all or any portion of the leased Tract, it shall not relieve the Lessee of the obligation to pay any bonus due thereon to the Louisiana State Mineral and Energy Board, nor shall the Louisiana State Mineral and Energy Board be obligated to refund any consideration paid by the Lessor prior to such modification, cancellation, or abrogation, including, but not limited to, bonuses, rentals and royalties.

NOTE: The State of Louisiana does hereby reserve, and this lease shall be subject to, the imprescriptible right of surface use in the nature of a servitude in favor of the Department of Natural Resources, including its Offices and Commissions, for the sole purpose of implementing, constructing, servicing and maintaining approved coastal zone management and/or restoration projects. Utilization of any and all rights derived under this lease by the mineral lessee, its agents, successors or assigns, shall not interfere with nor hinder the reasonable surface use by the Department of Natural Resources, its Offices or Commissions, as herein above reserved.

Applicant: BASIN PROPERTIES, INC.

Bidder	Cash Payment	Price/Acre	Rental	Oil	Gas	Other

Legend

12080011

IMAGERY.DOQQ_2008_1M_CIR

ST JAMES PARISH

MISSISSIPPI RIVER

P.O.B.

T12S - R17E

0 4,000 Feet

