

TRACT 42852 - Jefferson Parish, Louisiana

All of the lands now or formerly constituting the beds and bottoms of all water bodies of every nature and description as to which title is vested in the State of Louisiana, together with all islands arising therein and other lands formed by accretion or by reliction, where allowed by law, excepting tax adjudicated lands, and not presently under mineral lease on August 8, 2012, situated in Jefferson Parish, Louisiana, and more particularly described as follows: Beginning at the Southeast corner of State Lease No. 20779 having Coordinates of X = 2,422,807.57 and Y = 318,385.75; thence South 7,365.66 feet to a point on the Northern boundary of State Lease No. 20513 having Coordinates of X = 2,422,807.57 and Y = 311,020.09; thence South 75 degrees 08 minutes 14 seconds West 4,759.74 feet along the Northern boundary of said State Lease No. 20513 to its Westernmost corner, also being the Northernmost Northeast corner of State Lease No. 20514 having Coordinates of X = 2,418,207.08 and Y = 309,799.20; thence South 75 degrees 08 minutes 14 seconds West 2,904.25 feet along the Northern boundary of said State Lease No. 20514 to its Northwest corner having Coordinates of X = 2,415,400.00 and Y = 309,054.25; thence West 4,420.66 feet to a point having Coordinates of X = 2,410,979.34 and Y = 309,054.25; thence North 15,635.54 feet to a point on the South boundary of State Lease No. 20942 having Coordinates of X = 2,410,979.34 and Y = 324,689.79; thence East 2,484.00 feet along the South boundary of said State Lease No. 20942 to the Northwest corner of State Lease No. 20780 having Coordinates of X = 2,413,463.34 and Y = 324,689.79; thence along the boundary of said State Lease No. 20780 the following courses: South 2,500.00 feet to a corner having Coordinates of X = 2,413,463.34 and Y = 322,189.79; East 2,500.00 feet to a corner having Coordinates of X = 2,415,963.34 and Y = 322,189.79; and North 2,500.00 feet to its Northeast corner, also being the Southeast corner of said State Lease No. 20942 having Coordinates of X = 2,415,963.34 and Y = 324,689.79; thence North 2,860.21 feet along the East boundary of said State Lease No. 20942 to the Southwest corner of State Lease No. 20775 having Coordinates of X = 2,415,963.34 and Y = 327,550.00; thence East 3,500.45 feet along the South boundary of said State Lease No. 20775 to its Southeast corner having Coordinates of X = 2,419,463.79 and Y = 327,550.00; thence East 3,277.56 feet to a point having Coordinates of X = 2,422,741.35 and Y = 327,550.00; thence South 5,535.62 feet to the Northeast corner of said State Lease No. 20779 having Coordinates of X = 2,422,741.35 and Y = 322,014.38; thence along the boundary of said State Lease No. 20779 the following courses: South 88 degrees 57 minutes 00 seconds West 3,298.09 feet to a corner having Coordinates of X = 2,419,443.81 and Y = 321,953.94; South 01 degrees 00 minutes 24 seconds East 2,309.50 feet to a corner having Coordinates of X = 2,419,484.38 and Y = 319,644.80; North 88 degrees 54 minutes 59 seconds East 659.85 feet to a corner having Coordinates of X = 2,420,144.11 and Y = 319,657.28; South 01 degrees 01 minutes 15 seconds East 1,319.70 feet to a corner having Coordinates of X = 2,420,167.62 and Y = 318,337.79; and North 88 degrees 57 minutes 33 seconds East 2,640.39 feet to the point of beginning, containing approximately **995 acres**, all as more particularly outlined on a plat on file in the Office of Mineral

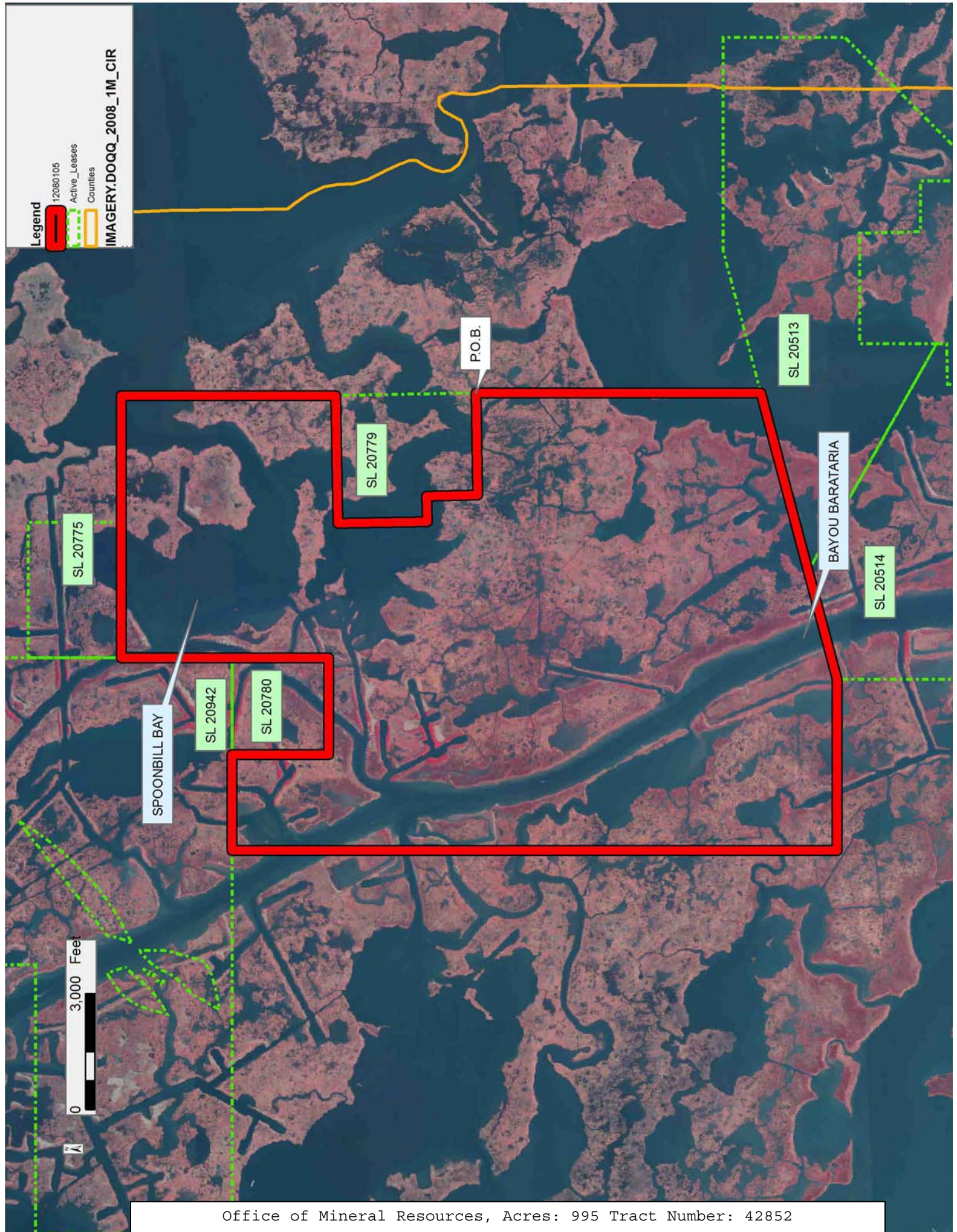
Resources, Department of Natural Resources. All bearings, distances and coordinates are based on Louisiana Coordinate System of 1927, (North or South Zone), where applicable.

NOTE: The above description of the Tract nominated for lease has been provided and corrected, where required, exclusively by the nomination party. Any mineral lease selected from this Tract and awarded by the Louisiana State Mineral and Energy Board shall be without warranty of any kind, either express, implied, or statutory, including, but not limited to, the implied warranties of merchantability and fitness for a particular purpose. Should the mineral lease awarded by the Louisiana State Mineral and Energy Board be subsequently modified, cancelled or abrogated due to the existence of conflicting leases, operating agreements, private claims or other future obligations or conditions which may affect all or any portion of the leased Tract, it shall not relieve the Lessee of the obligation to pay any bonus due thereon to the Louisiana State Mineral and Energy Board, nor shall the Louisiana State Mineral and Energy Board be obligated to refund any consideration paid by the Lessor prior to such modification, cancellation, or abrogation, including, but not limited to, bonuses, rentals and royalties.

NOTE: The State of Louisiana does hereby reserve, and this lease shall be subject to, the imprescriptible right of surface use in the nature of a servitude in favor of the Department of Natural Resources, including its Offices and Commissions, for the sole purpose of implementing, constructing, servicing and maintaining approved coastal zone management and/or restoration projects. Utilization of any and all rights derived under this lease by the mineral lessee, its agents, successors or assigns, shall not interfere with nor hinder the reasonable surface use by the Department of Natural Resources, its Offices or Commissions, as herein above reserved.

Applicant: ROBERT A. SCHROEDER, INC.

Bidder	Cash Payment	Price/Acre	Rental	Oil	Gas	Other



Legend

- 12080105
- Active_Leases
- Counties

IMAGERY.DOQQ_2008_1M_CIR

SPOONBILL BAY

SL 20942

SL 20780

SL 20779

P.O.B.

SL 20513

BAYOU BARATARIA

SL 20514

0 3,000 Feet



TRACT 42853 - Jefferson and Plaquemines Parishes, Louisiana

All of the lands now or formerly constituting the beds and bottoms of all water bodies of every nature and description as to which title is vested in the State of Louisiana, together with all islands arising therein and other lands formed by accretion or by reliction, where allowed by law, excepting tax adjudicated lands, and not presently under mineral lease on August 8, 2012, situated in Jefferson and Plaquemines Parishes, Louisiana, and more particularly described as follows: Beginning at the Southeast corner of State Lease No. 20779 having Coordinates of X = 2,422,807.57 and Y = 318,385.75; thence East 17,619.43 feet to a point having Coordinates of X = 2,440,427.00 and Y = 318,385.75; thence South 13,245.75 feet to a point having Coordinates of X = 2,440,427.00 and Y = 305,140.00; thence West 12,137.00 feet to a point on the Eastern boundary of State Lease No. 19949, also being the Southernmost Southeast corner of State Lease No. 20513 having Coordinates of X = 2,428,290.00 and Y = 305,140.00; thence along the boundary of said State Lease No. 20513 the following courses: North 45 degrees 00 minutes 00 seconds East 5,246.73 feet to a corner having Coordinates of X = 2,432,000.00 and Y = 308,850.00; North 3,150.00 feet to a corner having Coordinates of X = 2,432,000.00 and Y = 312,000.00; West 5,500.00 feet to a corner having Coordinates of X = 2,426,500.00 and Y = 312,000.00; and South 75 degrees 08 minutes 14 seconds West 3,820.24 feet to a point on its Northern boundary having Coordinates of X = 2,422,807.57 and Y = 311,020.09; thence North 7,365.66 feet to the point of beginning, (This tract includes only waterbottoms claimed and owned by the state and specifically excludes any land which the state may claim or own and to which the mineral rights are vested in the state), the above described tract containing approximately **1,775 acres**, all as more particularly outlined on a plat on file in the Office of Mineral Resources, Department of Natural Resources. All bearings, distances and coordinates are based on Louisiana Coordinate System of 1927, (North or South Zone), where applicable.

NOTE: The above description of the Tract nominated for lease has been provided and corrected, where required, exclusively by the nomination party. Any mineral lease selected from this Tract and awarded by the Louisiana State Mineral and Energy Board shall be without warranty of any kind, either express, implied, or statutory, including, but not limited to, the implied warranties of merchantability and fitness for a particular purpose. Should the mineral lease awarded by the Louisiana State Mineral and Energy Board be subsequently modified, cancelled or abrogated due to the existence of conflicting leases, operating agreements, private claims or other future obligations or conditions which may affect all or any portion of the leased Tract, it shall not relieve the Lessee of the obligation to pay any bonus due thereon to the Louisiana State Mineral and Energy Board, nor shall the Louisiana State Mineral and Energy Board be obligated to refund any consideration paid by the Lessor prior to such modification, cancellation, or abrogation, including, but not limited to, bonuses, rentals and royalties.

NOTE: The State of Louisiana does hereby reserve, and this lease shall be subject to, the imprescriptible right of surface use in the nature of a servitude in favor of the Department of Natural Resources, including its Offices and Commissions, for the sole purpose of implementing, constructing, servicing and maintaining approved coastal zone management and/or restoration projects. Utilization of any and all rights derived under this lease by the mineral lessee, its agents, successors or assigns, shall not interfere with nor hinder the reasonable surface use by the Department of Natural Resources, its Offices or Commissions, as herein above reserved.

Applicant: ROBERT A. SCHROEDER, INC.

Bidder	Cash Payment	Price/Acre	Rental	Oil	Gas	Other

Legend

12080107

Active_Leases

Counties

IMAGERY.DOOQ_2008_1M_CIR

PLAQUEMINES PARISH

JEFFERSON PARISH

BAYOU DUPONT

0 2,000 Feet

SL 20779

P.O.B.

SL 20513

SL 19949

T18S - R24E

TRACT 42854 - Plaquemines Parish, Louisiana

All of the lands now or formerly constituting the beds and bottoms of all water bodies of every nature and description as to which title is vested in the State of Louisiana, together with all islands arising therein and other lands formed by accretion or by reliction, where allowed by law, excepting tax adjudicated lands, and not presently under mineral lease on August 8, 2012, situated in Plaquemines Parish, Louisiana, and more particularly described as follows: Beginning at a point having Coordinates of X = 2,449,662.20 and Y = 259,743.42; thence North 4,204.25 feet along the boundary of said State Lease No. 17266, as amended, to a point on the South line of State Lease No. 1464 Tract 2, as amended, having Coordinates of X = 2,499,662.20 and Y = 263,947.67; thence North 87 degrees 34 minutes 56 seconds East 1,992.40 feet along the boundary of said State Lease No. 1464 Tract 2 to a point being its Southeast corner having Coordinates of X = 2,501,652.84 and Y = 264,031.73; thence North 89 degrees 59 minutes 59 seconds East 500.00 feet to a point having Coordinates of X = 2,502,152.84 and Y = 264,031.73; thence South 4,670.19 feet to a point on the North boundary State Lease No. 1464 Tract 3, having Coordinates of X = 2,502,152.84 and Y = 259,361.55; thence along the boundary of said State Lease No. 1464 Tract 3 the following: North 65 degrees 05 minutes 41 seconds West 820.47 feet to a point having Coordinates of X = 2,501,408.67 and Y = 259,707.06, and North 88 degrees 48 minutes 27 seconds West 1,746.85 feet the point of beginning, containing approximately **49 acres**, all as more particularly outlined on a plat on file in the Office of Mineral Resources, Department of Natural Resources. All bearings, distances and coordinates are based on Louisiana Coordinate System of 1927, (North or South Zone), where applicable.

NOTE: The above description of the Tract nominated for lease has been provided and corrected, where required, exclusively by the nomination party. Any mineral lease selected from this Tract and awarded by the Louisiana State Mineral and Energy Board shall be without warranty of any kind, either express, implied, or statutory, including, but not limited to, the implied warranties of merchantability and fitness for a particular purpose. Should the mineral lease awarded by the Louisiana State Mineral and Energy Board be subsequently modified, cancelled or abrogated due to the existence of conflicting leases, operating agreements, private claims or other future obligations or conditions which may affect all or any portion of the leased Tract, it shall not relieve the Lessee of the obligation to pay any bonus due thereon to the Louisiana State Mineral and Energy Board, nor shall the Louisiana State Mineral and Energy Board be obligated to refund any consideration paid by the Lessor prior to such modification, cancellation, or abrogation, including, but not limited to, bonuses, rentals and royalties.

NOTE: The State of Louisiana does hereby reserve, and this lease shall be subject to, the imprescriptible right of surface use in the nature of a servitude in favor of the Department of Natural Resources, including its Offices and Commissions, for the sole purpose of implementing,

constructing, servicing and maintaining approved coastal zone management and/or restoration projects. Utilization of any and all rights derived under this lease by the mineral lessee, its agents, successors or assigns, shall not interfere with nor hinder the reasonable surface use by the Department of Natural Resources, its Offices or Commissions, as herein above reserved.

Applicant: MARK A. O'NEAL & ASSOCIATES, INC.

Bidder	Cash Payment	Price/Acre	Rental	Oil	Gas	Other

Legend

- 2008/108
- State Claimable Waterbottoms
- Private Estate
- Active Leases

IMAGERY.DOQQ_2008_1M_CIR

PLAQUEMINES PARISH

LAKE WASHINGTON

BILLET BAY

SL 1464

SL 17266

P.O.B.

SL 1464

