

**TRACT 42855 - East Feliciana Parish, Louisiana**

A certain Tract of land, excluding the beds and bottoms of all navigable waters, belonging to and not presently under mineral lease from East Feliciana Parish Police Jury on August 8, 2012, being more fully described as follows: Beginning at a point having Coordinates of X = 2,025,350.66 and Y = 746,347.75; thence East 16,575.00 feet to a point having Coordinates of X = 2,041,925.66 and Y = 746,347.75; thence South 4,503.69 feet to a point having Coordinates of X = 2,041,925.66 and Y = 741,844.07; thence South 88 degrees 17 minutes 06 seconds West 16,582.43 feet to a point having Coordinates of X = 2,025,350.66 and Y = 741,347.75; thence North 5,000.00 feet to the point of beginning containing approximately **26 acres**, all as more particularly outlined on a plat on file in the Office of Mineral Resources, Department of Natural Resources. The description is based on information provided by the State Agency regarding location and ownership of surface and mineral rights. All bearings, distances and coordinates, if applicable, are based on Louisiana Coordinate System of 1927, (North or South Zone).

NOTE: The above description of the Tract nominated for lease has been provided and corrected, where required, exclusively by the nomination party. Any mineral lease selected from this Tract and awarded by the Louisiana State Mineral and Energy Board shall be without warranty of any kind, either express, implied, or statutory, including, but not limited to, the implied warranties of merchantability and fitness for a particular purpose. Should the mineral lease awarded by the Louisiana State Mineral and Energy Board be subsequently modified, cancelled or abrogated due to the existence of conflicting leases, operating agreements, private claims or other future obligations or conditions which may affect all or any portion of the leased Tract, it shall not relieve the Lessee of the obligation to pay any bonus due thereon to the Louisiana State Mineral and Energy Board, nor shall the Louisiana State Mineral and Energy Board be obligated to refund any consideration paid by the Lessor prior to such modification, cancellation, or abrogation, including, but not limited to, bonuses, rentals and royalties.

NOTE: Lessee must agree to drill within one (1) year from the date of the lease or, under penalty of forfeiture, to pay rentals of not less than one-half (1/2) of the cash bonus paid therefore, for the right to defer drilling during the subsequent years of the primary term and to drill offset wells, if necessary, to protect the land from drainage.

Applicant: TACOMA ENERGY CORPORATION to Agency and by Resolution from the East Feliciana Parish Police Jury authorizing the Mineral Board to act in its behalf

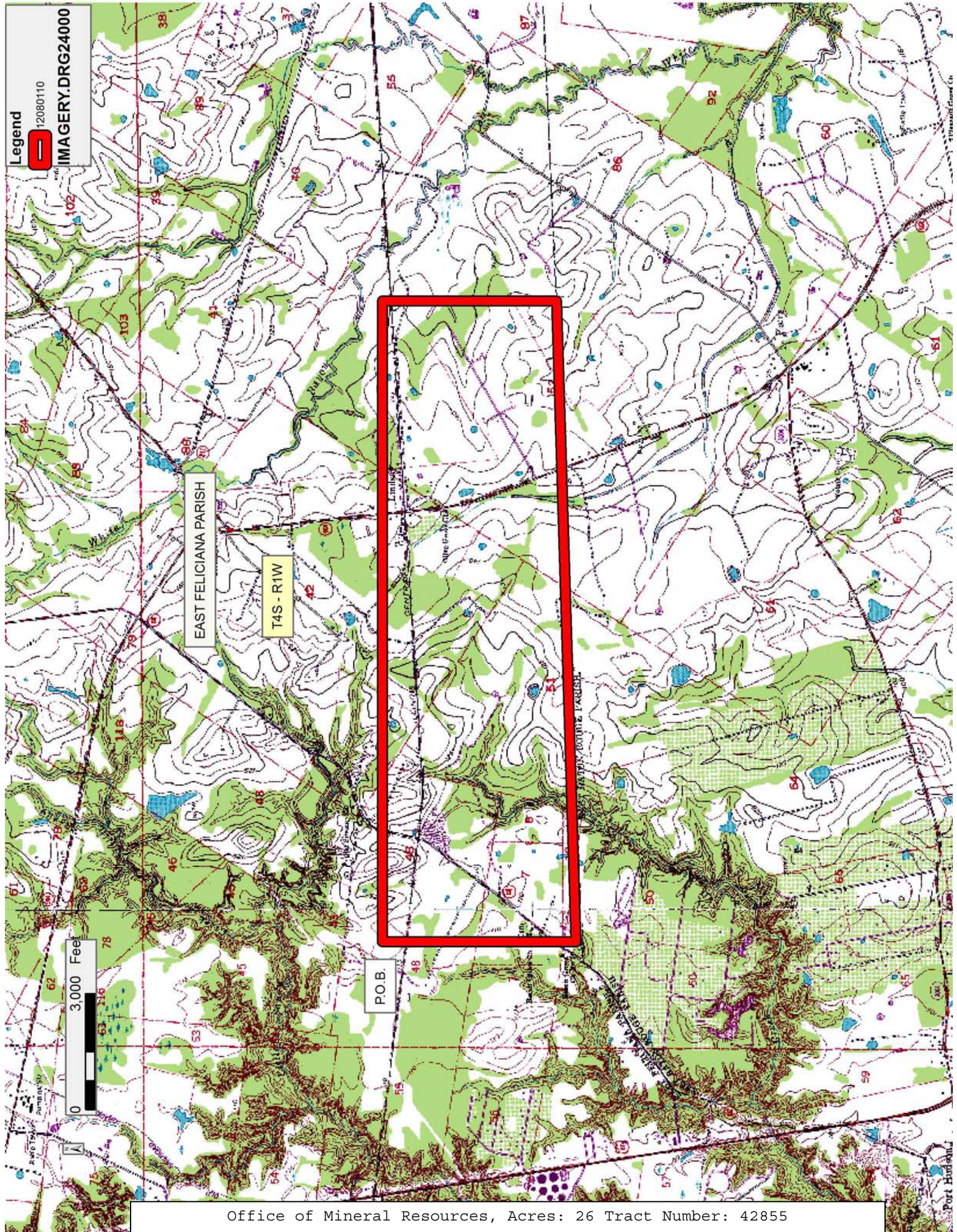
Bidder	Cash Payment	Price/Acre	Rental	Oil	Gas	Other



Legend

12080110

IMAGERY.DRG24000





**TRACT 42856 - East Baton Rouge Parish, Louisiana**

A certain Tract of land, excluding the beds and bottoms of all navigable waters, belonging to and not presently under mineral lease from City Council For The City Of Zachary on August 8, 2012, being more fully described as follows: Beginning at a point having Coordinates of X = 2,036,596.51 and Y = 739,039.66; thence East 4,500.00 feet to a point having Coordinates of X = 2,041,096.51 and Y = 739,039.66; thence South 4,500.00 feet to a point having Coordinates of X = 2,041,096.51 and Y = 734,539.66; thence West 4,500.00 feet to a point having Coordinates of X = 2,036,596.51 and Y = 734,539.66;; thence North 4,500.00 feet to the point of beginning containing approximately **2 acres**, all as more particularly outlined on a plat on file in the Office of Mineral Resources, Department of Natural Resources. The description is based on information provided by the State Agency regarding location and ownership of surface and mineral rights. All bearings, distances and coordinates, if applicable, are based on Louisiana Coordinate System of 1927, (North or South Zone).

NOTE: The above description of the Tract nominated for lease has been provided and corrected, where required, exclusively by the nomination party. Any mineral lease selected from this Tract and awarded by the Louisiana State Mineral and Energy Board shall be without warranty of any kind, either express, implied, or statutory, including, but not limited to, the implied warranties of merchantability and fitness for a particular purpose. Should the mineral lease awarded by the Louisiana State Mineral and Energy Board be subsequently modified, cancelled or abrogated due to the existence of conflicting leases, operating agreements, private claims or other future obligations or conditions which may affect all or any portion of the leased Tract, it shall not relieve the Lessee of the obligation to pay any bonus due thereon to the Louisiana State Mineral and Energy Board, nor shall the Louisiana State Mineral and Energy Board be obligated to refund any consideration paid by the Lessor prior to such modification, cancellation, or abrogation, including, but not limited to, bonuses, rentals and royalties.

Applicant: TACOMA ENERGY CORPORATION to Agency and by Resolution from the City Council For The City Of Zachary authorizing the Mineral Board to act in its behalf

Bidder	Cash Payment	Price/Acre	Rental	Oil	Gas	Other



Legend

12080109

Counties

IMAGERY.DRG24000

