

**TRACT 42871 - St. Mary Parish, Louisiana**

A portion of all lands located above the mean high water mark, together with lands now or formerly constituting the beds and bottoms of any water body of whatever description or nature belonging to the State of Louisiana which is now located within the boundaries of the Atchafalaya Delta Wildlife Management Area and not presently under mineral lease by the State of Louisiana on August 8, 2012, and more particularly located as follows: Beginning at a point within the Atchafalaya Delta Wildlife Management Area, also located on the East boundary of State Lease No. 20527 having Coordinates of X = 1,965,525.73 and Y = 277,200.00; thence East 1,711.67 feet to a point having Coordinates of X = 1,967,237.41 and Y = 277,200.00; thence South 8,551.00 feet to a point having Coordinates of X = 1,967,237.41 and Y = 268,649.00; thence West 9,336.79 feet to a point located on the East boundary of State Lease No. 20528 having Coordinates of X = 1,957,900.62 and Y = 268,649.00; thence along the East boundary of said State Lease No. 20528 the following courses and distances: North 69 degrees 07 minutes 19 seconds East 178.18 feet to a corner having Coordinates of X = 1,958,067.09 and Y = 268,712.50, North 44 degrees 21 minutes 54 seconds East 6,728.06 feet to a corner having Coordinates of X = 1,962,771.52 and Y = 273,522.39 and North 12 degrees 10 minutes 53 seconds East 1,443.97 feet to its Northeast corner also being the Southeast corner of said State Lease No. 20527 having Coordinates of X = 1,963,076.21 and Y = 274,933.85; thence North 47 degrees 13 minutes 37 seconds East 3,337.00 feet along the East boundary of said State Lease No. 20527 to the point of beginning, containing approximately **1,058.88 acres**, all as more particularly outlined on a plat on file in the Office of Mineral Resources, Department of Natural Resources. All bearings, distances and coordinates are based on Louisiana Coordinate System of 1927, (South Zone).

NOTE: The above description of the Tract nominated for lease has been provided and corrected, where required, exclusively by the nomination party. Any mineral lease selected from this Tract and awarded by the Louisiana State Mineral and Energy Board shall be without warranty of any kind, either express, implied, or statutory, including, but not limited to, the implied warranties of merchantability and fitness for a particular purpose. Should the mineral lease awarded by the Louisiana State Mineral and Energy Board be subsequently modified, cancelled or abrogated due to the existence of conflicting leases, operating agreements, private claims or other future obligations or conditions which may affect all or any portion of the leased Tract, it shall not relieve the Lessee of the obligation to pay any bonus due thereon to the Louisiana State Mineral and Energy Board, nor shall the Louisiana State Mineral and Energy Board be obligated to refund any consideration paid by the Lessor prior to such modification, cancellation, or abrogation, including, but not limited to, bonuses, rentals and royalties.

NOTE: The mineral lease is located in the Atchafalaya Delta WMA under the jurisdiction of the Louisiana Department of Wildlife and Fisheries which has promulgated rules and regulations for the protection of game and

wildlife on the aforesaid Tract and, therefore, shall be subject to said rules and regulations, a copy of which shall be attached to the mineral leases. In addition to the specific rules and regulations applicable, the following shall apply regarding operations under this mineral lease:

- No activities will be allowed without written authorization of the Louisiana Department of Wildlife and Fisheries.
- Proposed projects will be evaluated on a case by case basis. Modifications to proposed project features including but not limited to access routes, spoil placement, well sites, flowlines and appurtenant structures may be required by the Department of Wildlife and Fisheries.
- Compliance with the Atchafalaya Delta WMA regulations will be required unless otherwise specified by the Department of Wildlife and Fisheries.
- Compensatory mitigation will be required to offset unavoidable wetland impacts.
- Compensation and/or oyster seed ground surveys may be required by the Department for potential impacts to productive oyster seed grounds located within the management area.
- Removal of all structures, facilities and equipment will be required within 120 days of abandonment unless otherwise agreed to in writing by the Louisiana Department of Wildlife and Fisheries.
- No activities will be allowed during the hunting season unless approved by the Department.
- This tract is located within the emerging Atchafalaya Delta. No activities will be allowed on emergent islands, sub aerial mudflats or vegetated wetlands. Drilling will be restricted to passes and open water bays. The Louisiana Department of Wildlife and Fisheries (LDWF) shall have discretion to determine access routes. In the event that LDWF approves of dredging for access, LDWF shall have discretion to require hydraulic or spray dredging to reduce environmental impacts.
- Prior to submitting application for wetland permits to Federal and State permitting agencies the leaseholder shall coordinate project details with the Department of Wildlife and Fisheries. Contact person for the Department will be Mike Windham at (504)284-5268.

Additionally, the Department will require a minimum bonus of \$350.00 per acre and a minimum royalty of 25%.

NOTE: The above described tract may be in the vicinity of existing shell reefs where drilling and dredging operations must be conducted in strict conformity with the regulations adopted by the Louisiana Department of Wildlife and Fisheries and/or the U.S. Corps of Engineers, U.S. Army.

NOTE: The State of Louisiana does hereby reserve, and this lease shall be subject to, the imprescriptible right of surface use in the nature of a servitude in favor of the Department of Natural Resources, including its Offices and Commissions, for the sole purpose of implementing, constructing, servicing and maintaining approved coastal zone management and/or restoration projects. Utilization of any and all rights derived under this lease by the mineral lessee, its agents, successors or assigns, shall not interfere with nor hinder the reasonable surface use by the Department of Natural Resources, its Offices or Commissions, as herein above reserved.

NOTE: This tract is located in an area designated by the Louisiana Legislature or the Wildlife and Fisheries Commission as a Public Oyster Seed Ground, Reservation, or area of Calcasieu or Sabine Lake. Proposed projects occurring in these areas will be evaluated on a case by case basis by Louisiana Department of Wildlife & Fisheries. Modifications to proposed project features including, but not limited to, access routes, well sites, flowlines, and appurtenant structures maybe required by the Louisiana Department of Wildlife and Fisheries. In addition, compensatory mitigation will be required to offset unavoidable habitat impacts.

Applicant: THEOPHILUS OIL, GAS & LAND SERVICES, LLC

Bidder	Cash Payment	Price/Acre	Rental	Oil	Gas	Other



**Legend**

- 12080116
- Wildlife
- Active Leases

ST MARY PARISH

ATCHAFALAYA DELTA WMA

ATCHAFALAYA BAY

P.O.B.

SL 20527

SL 20528





**TRACT 42872 - St. Mary Parish, Louisiana**

A portion of all lands located above the mean high water mark, together with lands now or formerly constituting the beds and bottoms of any water body of whatever description or nature belonging to the State of Louisiana which is now located within the boundaries of the Atchafalaya Delta Wildlife Management Area and not presently under mineral lease by the State of Louisiana on August 8, 2012, and more particularly located as follows: Beginning at a point having within the Atchafalaya Delta Wildlife Management Area, Coordinates of X = 1,967,237.41 and Y = 277,200.00; thence East 9,524.59 feet to a point having Coordinates of X = 1,976,762.00 and Y = 277,200.00; thence South 6,446.00 feet to the Northwest corner of State Lease No. 20690 having Coordinates of X = 1,976,762.00 and Y = 270,754.00; thence South 2,105.00 feet along the West boundary of said State Lease No. 20690 to a point having Coordinates of X = 1,976,762.00 and Y = 268,649.00; thence West 9,524.59 feet to a point having Coordinates of X = 1,967,237.41 and Y = 268,649.00; thence North 8,551.00 feet to the point of beginning, containing approximately **1,869.72 acres**, all as more particularly outlined on a plat on file in the Office of Mineral Resources, Department of Natural Resources. All bearings, distances and coordinates are based on Louisiana Coordinate System of 1927, (South Zone).

NOTE: The above description of the Tract nominated for lease has been provided and corrected, where required, exclusively by the nomination party. Any mineral lease selected from this Tract and awarded by the Louisiana State Mineral and Energy Board shall be without warranty of any kind, either express, implied, or statutory, including, but not limited to, the implied warranties of merchantability and fitness for a particular purpose. Should the mineral lease awarded by the Louisiana State Mineral and Energy Board be subsequently modified, cancelled or abrogated due to the existence of conflicting leases, operating agreements, private claims or other future obligations or conditions which may affect all or any portion of the leased Tract, it shall not relieve the Lessee of the obligation to pay any bonus due thereon to the Louisiana State Mineral and Energy Board, nor shall the Louisiana State Mineral and Energy Board be obligated to refund any consideration paid by the Lessor prior to such modification, cancellation, or abrogation, including, but not limited to, bonuses, rentals and royalties.

NOTE: The mineral lease is located in the Atchafalaya Delta WMA under the jurisdiction of the Louisiana Department of Wildlife and Fisheries which has promulgated rules and regulations for the protection of game and wildlife on the aforesaid Tract and, therefore, shall be subject to said rules and regulations, a copy of which shall be attached to the mineral leases. In addition to the specific rules and regulations applicable, the following shall apply regarding operations under this mineral lease:

- No activities will be allowed without written authorization of the Louisiana Department of Wildlife and Fisheries.

- Proposed projects will be evaluated on a case by case basis. Modifications to proposed project features including but not limited to access routes, spoil placement, well sites, flowlines and appurtenant structures may be required by the Department of Wildlife and Fisheries.
- Compliance with the Atchafalaya Delta WMA regulations will be required unless otherwise specified by the Department of Wildlife and Fisheries.
- Compensatory mitigation will be required to offset unavoidable wetland impacts.
- Compensation and/or oyster seed ground surveys may be required by the Department for potential impacts to productive oyster seed grounds located within the management area.
- Removal of all structures, facilities and equipment will be required within 120 days of abandonment unless otherwise agreed to in writing by the Louisiana Department of Wildlife and Fisheries.
- No activities will be allowed during the hunting season unless approved by the Department.
- This tract is located within the emerging Atchafalaya Delta. No activities will be allowed on emergent islands, sub aerial mudflats or vegetated wetlands. Drilling will be restricted to passes and open water bays. The Louisiana Department of Wildlife and Fisheries (LDWF) shall have discretion to determine access routes. In the event that LDWF approves of dredging for access, LDWF shall have discretion to require hydraulic or spray dredging to reduce environmental impacts.
- Prior to submitting application for wetland permits to Federal and State permitting agencies the leaseholder shall coordinate project details with the Department of Wildlife and Fisheries. Contact person for the Department will be Mike Windham at (504)284-5268.

Additionally, the Department will require a minimum bonus of \$350.00 per acre and a minimum royalty of 25%.

NOTE: The above described tract may be in the vicinity of existing shell reefs where drilling and dredging operations must be conducted in strict conformity with the regulations adopted by the Louisiana Department of Wildlife and Fisheries and/or the U.S. Corps of Engineers, U.S. Army.

NOTE: The State of Louisiana does hereby reserve, and this lease shall be subject to, the imprescriptible right of surface use in the nature of a servitude in favor of the Department of Natural Resources, including its Offices and Commissions, for the sole purpose of implementing, constructing, servicing and maintaining approved coastal zone management and/or restoration projects. Utilization of any and all rights derived under this lease by the mineral lessee, its agents, successors or assigns, shall not interfere with nor hinder the reasonable surface use by the

Department of Natural Resources, its Offices or Commissions, as herein above reserved.

NOTE: This tract is located in an area designated by the Louisiana Legislature or the Wildlife and Fisheries Commission as a Public Oyster Seed Ground, Reservation, or area of Calcasieu or Sabine Lake. Proposed projects occurring in these areas will be evaluated on a case by case basis by Louisiana Department of Wildlife & Fisheries. Modifications to proposed project features including, but not limited to, access routes, well sites, flowlines, and appurtenant structures maybe required by the Louisiana Department of Wildlife and Fisheries. In addition, compensatory mitigation will be required to offset unavoidable habitat impacts.

Applicant: THEOPHILUS OIL, GAS & LAND SERVICES, LLC

Bidder	Cash Payment	Price/Acre	Rental	Oil	Gas	Other



**Legend**

- 12080120
- Wildlife
- Active Leases

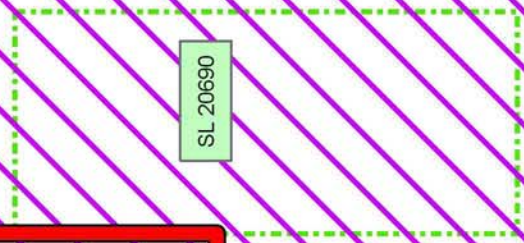
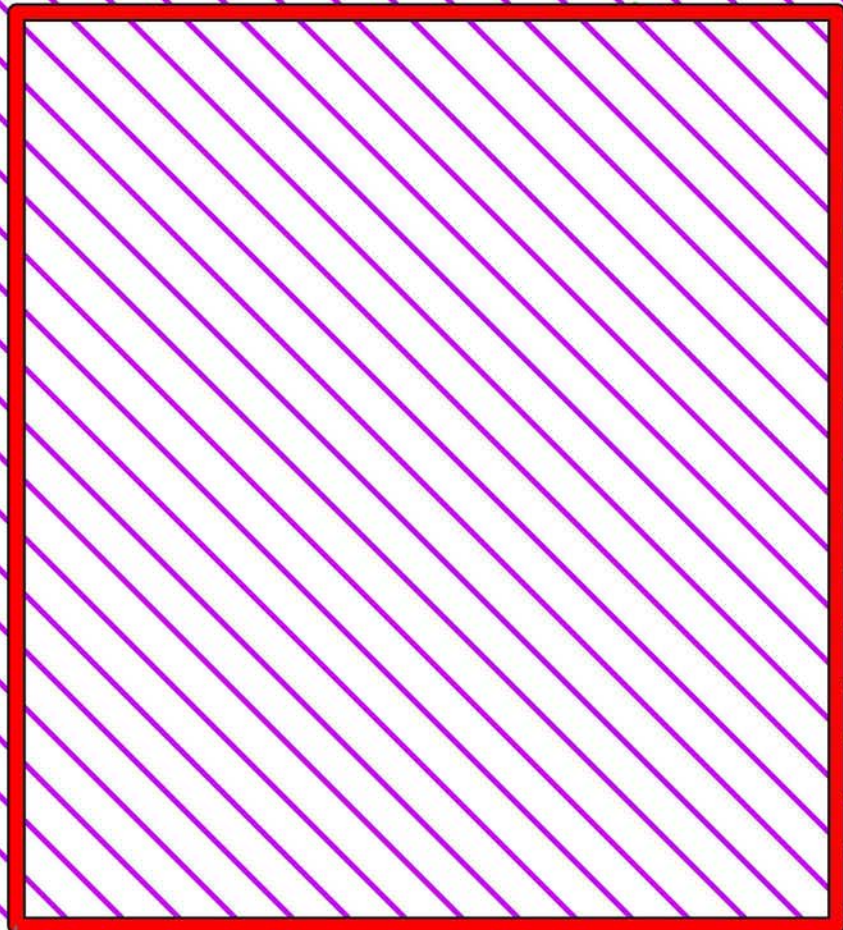


ST MARY PARISH

ATCHAFALAYA BAY

P.O.B.

ATCHAFALAYA DELTA WMA



SL 20690



**TRACT 42873 - St. Mary Parish, Louisiana**

A portion of all lands located above the mean high water mark, together with lands now or formerly constituting the beds and bottoms of any water body of whatever description or nature belonging to the State of Louisiana which is now located within the boundaries of the Atchafalaya Delta Wildlife Management Area and not presently under mineral lease by the State of Louisiana on August 8, 2012, and more particularly located as follows: Beginning at a point within the Atchafalaya Delta Wildlife Management Area, having Coordinates of X = 1,976,762.00 and Y = 277,200.00; thence East 10,000.00 feet to a point having Coordinates of X = 1,986,762.00 and Y = 277,200.00; thence South 4,700.00 feet to the Northeast corner of State Lease No. 20255 having Coordinates of X = 1,986,762.00 and Y = 272,500.00; thence West 1,068.76 feet along the North boundary of said State Lease No. 20255 to the Northeast corner of State Lease No. 19957 having Coordinates of X = 1,985,693.24 and Y = 272,500.00; thence West 497.24 feet along the North boundary of said State Lease No. 19957 to the Southeast corner of State Lease No. 20689 having Coordinates of X = 1,985,196.00 and Y = 272,500.00; thence along the East and North boundary of said State Lease No. 20689 the following courses and distances: North 00 degrees 10 minutes 31 seconds West 1,308.01 feet to a corner having Coordinates of X = 1,985,192.00 and Y = 273,808.00, North 1,196.00 feet to a corner having Coordinates of X = 1,985,192.00 and Y = 275,004.00 and North 89 degrees 23 minutes 00 seconds West 2,416.14 feet to the Southeast corner of State Lease No. 20691 having Coordinates of X = 1,982,776.00 and Y = 275,030.00; thence along the East, North and West boundary of said State Lease No. 20691 the following courses and distances: North 196.00 feet to a corner having Coordinates of X = 1,982,776.00 and Y = 275,226.00, South 89 degrees 34 minutes 08 seconds West 3,722.11 feet to a corner having Coordinates of X = 1,979,054.00 and Y = 275,198.00 and South 1,918.00 feet to a Northwest corner of said State Lease No. 20689 having Coordinates of X = 1,979,054.00 and Y = 273,280.00; thence along the West boundary of said State Lease No. 20689 the following courses and distances: South 00 degrees 57 minutes 46 seconds West 1,666.23 feet to a corner having Coordinates of X = 1,979,026.00 and Y = 271,614.00 and South 00 degrees 39 minutes 58 seconds East 860.06 feet to a corner located on the North boundary of State Lease No. 20690 having Coordinates of X = 1,979,036.00 and Y = 270,754.00; thence West 2,274.00 feet along the North boundary of said State Lease No. 20690 to its Northwest corner having Coordinates of X = 1,976,762.00 and Y = 270,754.00; thence North 6,446.00 feet to the point of beginning, containing, approximately **798.46 acres**, all as more particularly outlined on a plat on file in the Office of Mineral Resources, Department of Natural Resources. All bearings, distances and coordinates are based on Louisiana Coordinate System of 1927, (South Zone).

NOTE: The above description of the Tract nominated for lease has been provided and corrected, where required, exclusively by the nomination party. Any mineral lease selected from this Tract and awarded by the Louisiana State Mineral and Energy Board shall be without warranty of any

kind, either express, implied, or statutory, including, but not limited to, the implied warranties of merchantability and fitness for a particular purpose. Should the mineral lease awarded by the Louisiana State Mineral and Energy Board be subsequently modified, cancelled or abrogated due to the existence of conflicting leases, operating agreements, private claims or other future obligations or conditions which may affect all or any portion of the leased Tract, it shall not relieve the Lessee of the obligation to pay any bonus due thereon to the Louisiana State Mineral and Energy Board, nor shall the Louisiana State Mineral and Energy Board be obligated to refund any consideration paid by the Lessor prior to such modification, cancellation, or abrogation, including, but not limited to, bonuses, rentals and royalties.

NOTE: The mineral lease is located in the Atchafalaya Delta WMA under the jurisdiction of the Louisiana Department of Wildlife and Fisheries which has promulgated rules and regulations for the protection of game and wildlife on the aforesaid Tract and, therefore, shall be subject to said rules and regulations, a copy of which shall be attached to the mineral leases. In addition to the specific rules and regulations applicable, the following shall apply regarding operations under this mineral lease:

- No activities will be allowed without written authorization of the Louisiana Department of Wildlife and Fisheries.
- Proposed projects will be evaluated on a case by case basis. Modifications to proposed project features including but not limited to access routes, spoil placement, well sites, flowlines and appurtenant structures may be required by the Department of Wildlife and Fisheries.
- Compliance with the Atchafalaya Delta WMA regulations will be required unless otherwise specified by the Department of Wildlife and Fisheries.
- Compensatory mitigation will be required to offset unavoidable wetland impacts.
- Compensation and/or oyster seed ground surveys may be required by the Department for potential impacts to productive oyster seed grounds located within the management area.
- Removal of all structures, facilities and equipment will be required within 120 days of abandonment unless otherwise agreed to in writing by the Louisiana Department of Wildlife and Fisheries.
- No activities will be allowed during the hunting season unless approved by the Department.
- This tract is located within the emerging Atchafalaya Delta. No activities will be allowed on emergent islands, sub aerial mudflats or vegetated wetlands. Drilling will be restricted to passes and open water bays. The Louisiana Department of Wildlife and Fisheries (LDWF) shall have discretion to determine access routes. In the event that LDWF approves of dredging for access, LDWF shall have discretion to require hydraulic or spray dredging to reduce environmental impacts.

- Prior to submitting application for wetland permits to Federal and State permitting agencies the leaseholder shall coordinate project details with the Department of Wildlife and Fisheries. Contact person for the Department will be Mike Windham at (504)284-5268.

Additionally, the Department will require a minimum bonus of \$350.00 per acre and a minimum royalty of 25%.

NOTE: The above described tract may be in the vicinity of existing shell reefs where drilling and dredging operations must be conducted in strict conformity with the regulations adopted by the Louisiana Department of Wildlife and Fisheries and/or the U.S. Corps of Engineers, U.S. Army.

NOTE: The State of Louisiana does hereby reserve, and this lease shall be subject to, the imprescriptible right of surface use in the nature of a servitude in favor of the Department of Natural Resources, including its Offices and Commissions, for the sole purpose of implementing, constructing, servicing and maintaining approved coastal zone management and/or restoration projects. Utilization of any and all rights derived under this lease by the mineral lessee, its agents, successors or assigns, shall not interfere with nor hinder the reasonable surface use by the Department of Natural Resources, its Offices or Commissions, as herein above reserved.

NOTE: This tract is located in an area designated by the Louisiana Legislature or the Wildlife and Fisheries Commission as a Public Oyster Seed Ground, Reservation, or area of Calcasieu or Sabine Lake. Proposed projects occurring in these areas will be evaluated on a case by case basis by Louisiana Department of Wildlife & Fisheries. Modifications to proposed project features including, but not limited to, access routes, well sites, flowlines, and appurtenant structures maybe required by the Louisiana Department of Wildlife and Fisheries. In addition, compensatory mitigation will be required to offset unavoidable habitat impacts.

Applicant: THEOPHILUS OIL, GAS & LAND SERVICES, LLC

Bidder	Cash Payment	Price/Acre	Rental	Oil	Gas	Other



**Legend**

- 12080121
- Wildlife
- Active Leases

ST MARY PARISH

ATCHAFALAYA DELTA WMA

P.O.B.

ATCHAFALAYA BAY

SL 20691

SL 20689

SL 19957

SL 20690

SL 20255





**TRACT 42874 - St. Mary Parish, Louisiana**

A portion of all lands located above the mean high water mark, together with lands now or formerly constituting the beds and bottoms of any water body of whatever description or nature belonging to the State of Louisiana which is now located within the boundaries of the Atchafalaya Delta Wildlife Management Area and not presently under mineral lease by the State of Louisiana on August 8, 2012, and more particularly located as follows: Beginning at a point within the Atchafalaya Delta Wildlife Management Area, having Coordinates of X = 1,967,237.41 and Y = 268,649.00; thence East 9,524.59 feet to a point on the West boundary of State Lease No. 20690 having Coordinates of X = 1,976,762.00 and Y = 268,649.00; thence South 3,130.89 feet along the West boundary of said State Lease No. 20690 to its Southwest corner, also being the Northwest corner of State Lease No. 20693 having Coordinates of X = 1,976,762.00 and Y = 265,518.11; thence along the West boundary of said State Lease No. 20693 the following courses and distances: South 1,509.48 feet to a corner having Coordinates of X = 1,976,762.00 and Y = 264,008.63 and South 36 degrees 53 minutes 34 seconds East 1,952.75 feet to its Southeast corner, also being a point on the West boundary of State Lease No. 20692, having Coordinates of X = 1,977,934.27 and Y = 262,446.90; thence South 4,314.90 feet to a point having Coordinates of X = 1,977,934.27 and Y = 258,132.00; thence West 10,696.86 feet to a point on the Northeasterly boundary of State Lease Number 20694 having Coordinates of X = 1,967,237.41 and Y = 258,132.00; thence North 10,517.00 feet to the point of beginning, containing approximately **2,436.73 acres**, all as more particularly outlined on a plat on file in the Office of Mineral Resources, Department of Natural Resources. All bearings, distances and coordinates are based on Louisiana Coordinate System of 1927, (South Zone).

NOTE: The above description of the Tract nominated for lease has been provided and corrected, where required, exclusively by the nomination party. Any mineral lease selected from this Tract and awarded by the Louisiana State Mineral and Energy Board shall be without warranty of any kind, either express, implied, or statutory, including, but not limited to, the implied warranties of merchantability and fitness for a particular purpose. Should the mineral lease awarded by the Louisiana State Mineral and Energy Board be subsequently modified, cancelled or abrogated due to the existence of conflicting leases, operating agreements, private claims or other future obligations or conditions which may affect all or any portion of the leased Tract, it shall not relieve the Lessee of the obligation to pay any bonus due thereon to the Louisiana State Mineral and Energy Board, nor shall the Louisiana State Mineral and Energy Board be obligated to refund any consideration paid by the Lessor prior to such modification, cancellation, or abrogation, including, but not limited to, bonuses, rentals and royalties.

NOTE: The mineral lease is located in the Atchafalaya Delta WMA under the jurisdiction of the Louisiana Department of Wildlife and Fisheries which has promulgated rules and regulations for the protection of game and

wildlife on the aforesaid Tract and, therefore, shall be subject to said rules and regulations, a copy of which shall be attached to the mineral leases. In addition to the specific rules and regulations applicable, the following shall apply regarding operations under this mineral lease:

- No activities will be allowed without written authorization of the Louisiana Department of Wildlife and Fisheries.
- Proposed projects will be evaluated on a case by case basis. Modifications to proposed project features including but not limited to access routes, spoil placement, well sites, flowlines and appurtenant structures may be required by the Department of Wildlife and Fisheries.
- Compliance with the Atchafalaya Delta WMA regulations will be required unless otherwise specified by the Department of Wildlife and Fisheries.
- Compensatory mitigation will be required to offset unavoidable wetland impacts.
- Compensation and/or oyster seed ground surveys may be required by the Department for potential impacts to productive oyster seed grounds located within the management area.
- Removal of all structures, facilities and equipment will be required within 120 days of abandonment unless otherwise agreed to in writing by the Louisiana Department of Wildlife and Fisheries.
- No activities will be allowed during the hunting season unless approved by the Department.
- This tract is located within the emerging Atchafalaya Delta. No activities will be allowed on emergent islands, sub aerial mudflats or vegetated wetlands. Drilling will be restricted to passes and open water bays. The Louisiana Department of Wildlife and Fisheries (LDWF) shall have discretion to determine access routes. In the event that LDWF approves of dredging for access, LDWF shall have discretion to require hydraulic or spray dredging to reduce environmental impacts.
- Prior to submitting application for wetland permits to Federal and State permitting agencies the leaseholder shall coordinate project details with the Department of Wildlife and Fisheries. Contact person for the Department will be Mike Windham at (504)284-5268.

Additionally, the Department will require a minimum bonus of \$350.00 per acre and a minimum royalty of 25%.

NOTE: The above described tract may be in the vicinity of existing shell reefs where drilling and dredging operations must be conducted in strict conformity with the regulations adopted by the Louisiana Department of Wildlife and Fisheries and/or the U.S. Corps of Engineers, U.S. Army.



NOTE: The State of Louisiana does hereby reserve, and this lease shall be subject to, the imprescriptible right of surface use in the nature of a servitude in favor of the Department of Natural Resources, including its Offices and Commissions, for the sole purpose of implementing, constructing, servicing and maintaining approved coastal zone management and/or restoration projects. Utilization of any and all rights derived under this lease by the mineral lessee, its agents, successors or assigns, shall not interfere with nor hinder the reasonable surface use by the Department of Natural Resources, its Offices or Commissions, as herein above reserved.

NOTE: This tract is located in an area designated by the Louisiana Legislature or the Wildlife and Fisheries Commission as a Public Oyster Seed Ground, Reservation, or area of Calcasieu or Sabine Lake. Proposed projects occurring in these areas will be evaluated on a case by case basis by Louisiana Department of Wildlife & Fisheries. Modifications to proposed project features including, but not limited to, access routes, well sites, flowlines, and appurtenant structures maybe required by the Louisiana Department of Wildlife and Fisheries. In addition, compensatory mitigation will be required to offset unavoidable habitat impacts.

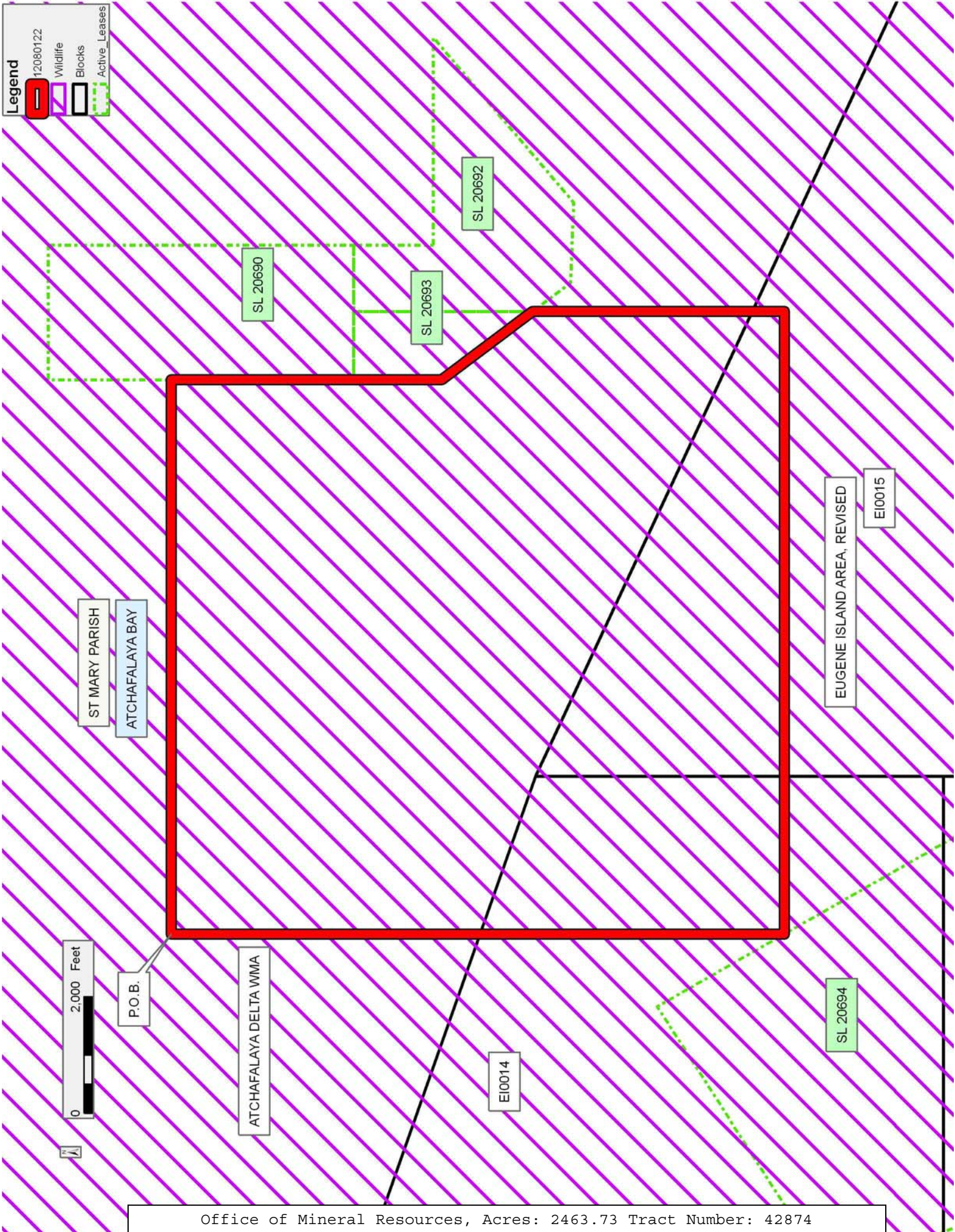
Applicant: THEOPHILUS OIL, GAS & LAND SERVICES, LLC

Bidder	Cash Payment	Price/Acre	Rental	Oil	Gas	Other



**Legend**

- 12080122
- Wildlife
- Blocks
- Active\_Leases





**TRACT 42875 - St. Mary Parish, Louisiana**

A portion of all lands located above the mean high water mark, together with lands now or formerly constituting the beds and bottoms of any water body of whatever description or nature belonging to the State of Louisiana which is now located within the boundaries of the Atchafalaya Delta Wildlife Management Area and not presently under mineral lease by the State of Louisiana on August 8, 2012, and more particularly located as follows: Beginning at a point within the Atchafalaya Delta Wildlife Management Area, also located on the East boundary of State Lease No. 20528 having Coordinates of X = 1,957,900.62 and Y = 268,649.00; thence East 9,336.79 feet to a point having Coordinates of X = 1,967,237.41 and Y = 268,649.00; thence South 4,949.00 feet to a point having Coordinates of X = 1,967,237.41 and Y = 263,700.00; thence West 13,937.41 feet to the Northeast corner of State Lease No. 20223 having Coordinates of X = 1,953,300.00 and Y = 263,700.00; thence along the North and West boundary of said State Lease No. 20223 the following courses and distances: North 55 degrees 18 minutes 17 seconds West 1,581.14 feet to a corner having Coordinates of X = 1,952,000.00 and Y = 264,600.00, South 45 degrees 00 minutes 00 seconds West 2,404.16 feet to a corner having Coordinates of X = 1,950,300.00 and Y = 262,900.00, South 26 degrees 33 minutes 54 seconds East 447.21 feet to a corner having Coordinates of X = 1,950,500.00 and Y = 262,500.00 and South 41 degrees 25 minutes 25 seconds West 1,727.79 feet to its Southwest corner, also being the Northwest corner of State Lease No. 20224 having Coordinates of X = 1,949,356.86 and Y = 261,204.44; thence North 3,326.34 feet to a point on the Southeast boundary of State Lease No. 20753 having Coordinates of X = 1,949,356.86 and Y = 264,530.78; thence along the Southeast boundary of said State Lease No. 20753 the following courses and distances: North 61 degrees 58 minutes 54 seconds East 6,272.27 feet to a corner having Coordinates of X = 1,954,894.00 and Y = 267,477.20 and North 10 degrees 45 minutes 42 seconds East 27.45 feet to a corner located on the Southeast boundary of State Lease No. 20529 having Coordinates of X = 1,954,899.12 and Y = 267,504.16; thence North 69 degrees 07 minutes 19 seconds East 1,993.78 feet along the Southeast boundary of said State Lease No. 20529 to its Southeast corner, also being the Southwest corner of said State Lease No. 20528 having Coordinates of X = 1,956,762.00 and Y = 268,214.71; thence North 69 degrees 07 minutes 19 seconds East 1,218.63 feet along the Southeast boundary of said State Lease No. 20528 to the point of beginning, containing approximately **1,684.19 acres**, all as more particularly outlined on a plat on file in the Office of Mineral Resources, Department of Natural Resources. All bearings, distances and coordinates are based on Louisiana Coordinate System of 1927, (South Zone).

NOTE: The above description of the Tract nominated for lease has been provided and corrected, where required, exclusively by the nomination party. Any mineral lease selected from this Tract and awarded by the Louisiana State Mineral and Energy Board shall be without warranty of any kind, either express, implied, or statutory, including, but not limited to, the implied warranties of merchantability and fitness for a particular



purpose. Should the mineral lease awarded by the Louisiana State Mineral and Energy Board be subsequently modified, cancelled or abrogated due to the existence of conflicting leases, operating agreements, private claims or other future obligations or conditions which may affect all or any portion of the leased Tract, it shall not relieve the Lessee of the obligation to pay any bonus due thereon to the Louisiana State Mineral and Energy Board, nor shall the Louisiana State Mineral and Energy Board be obligated to refund any consideration paid by the Lessor prior to such modification, cancellation, or abrogation, including, but not limited to, bonuses, rentals and royalties.

NOTE: The mineral lease is located in the Atchafalaya Delta WMA under the jurisdiction of the Louisiana Department of Wildlife and Fisheries which has promulgated rules and regulations for the protection of game and wildlife on the aforesaid Tract and, therefore, shall be subject to said rules and regulations, a copy of which shall be attached to the mineral leases. In addition to the specific rules and regulations applicable, the following shall apply regarding operations under this mineral lease:

- No activities will be allowed without written authorization of the Louisiana Department of Wildlife and Fisheries.
- Proposed projects will be evaluated on a case by case basis. Modifications to proposed project features including but not limited to access routes, spoil placement, well sites, flowlines and appurtenant structures may be required by the Department of Wildlife and Fisheries.
- Compliance with the Atchafalaya Delta WMA regulations will be required unless otherwise specified by the Department of Wildlife and Fisheries.
- Compensatory mitigation will be required to offset unavoidable wetland impacts.
- Compensation and/or oyster seed ground surveys may be required by the Department for potential impacts to productive oyster seed grounds located within the management area.
- Removal of all structures, facilities and equipment will be required within 120 days of abandonment unless otherwise agreed to in writing by the Louisiana Department of Wildlife and Fisheries.
- No activities will be allowed during the hunting season unless approved by the Department.
- This tract is located within the emerging Atchafalaya Delta. No activities will be allowed on emergent islands, sub aerial mudflats or vegetated wetlands. Drilling will be restricted to passes and open water bays. The Louisiana Department of Wildlife and Fisheries (LDWF) shall have discretion to determine access routes. In the event that LDWF approves of dredging for access, LDWF shall have discretion to require hydraulic or spray dredging to reduce environmental impacts.

- Prior to submitting application for wetland permits to Federal and State permitting agencies the leaseholder shall coordinate project details with the Department of Wildlife and Fisheries. Contact person for the Department will be Mike Windham at (504)284-5268.

Additionally, the Department will require a minimum bonus of \$350.00 per acre and a minimum royalty of 25%.

NOTE: The above described tract may be in the vicinity of existing shell reefs where drilling and dredging operations must be conducted in strict conformity with the regulations adopted by the Louisiana Department of Wildlife and Fisheries and/or the U.S. Corps of Engineers, U.S. Army.

NOTE: The State of Louisiana does hereby reserve, and this lease shall be subject to, the imprescriptible right of surface use in the nature of a servitude in favor of the Department of Natural Resources, including its Offices and Commissions, for the sole purpose of implementing, constructing, servicing and maintaining approved coastal zone management and/or restoration projects. Utilization of any and all rights derived under this lease by the mineral lessee, its agents, successors or assigns, shall not interfere with nor hinder the reasonable surface use by the Department of Natural Resources, its Offices or Commissions, as herein above reserved.

NOTE: This tract is located in an area designated by the Louisiana Legislature or the Wildlife and Fisheries Commission as a Public Oyster Seed Ground, Reservation, or area of Calcasieu or Sabine Lake. Proposed projects occurring in these areas will be evaluated on a case by case basis by Louisiana Department of Wildlife & Fisheries. Modifications to proposed project features including, but not limited to, access routes, well sites, flowlines, and appurtenant structures maybe required by the Louisiana Department of Wildlife and Fisheries. In addition, compensatory mitigation will be required to offset unavoidable habitat impacts.

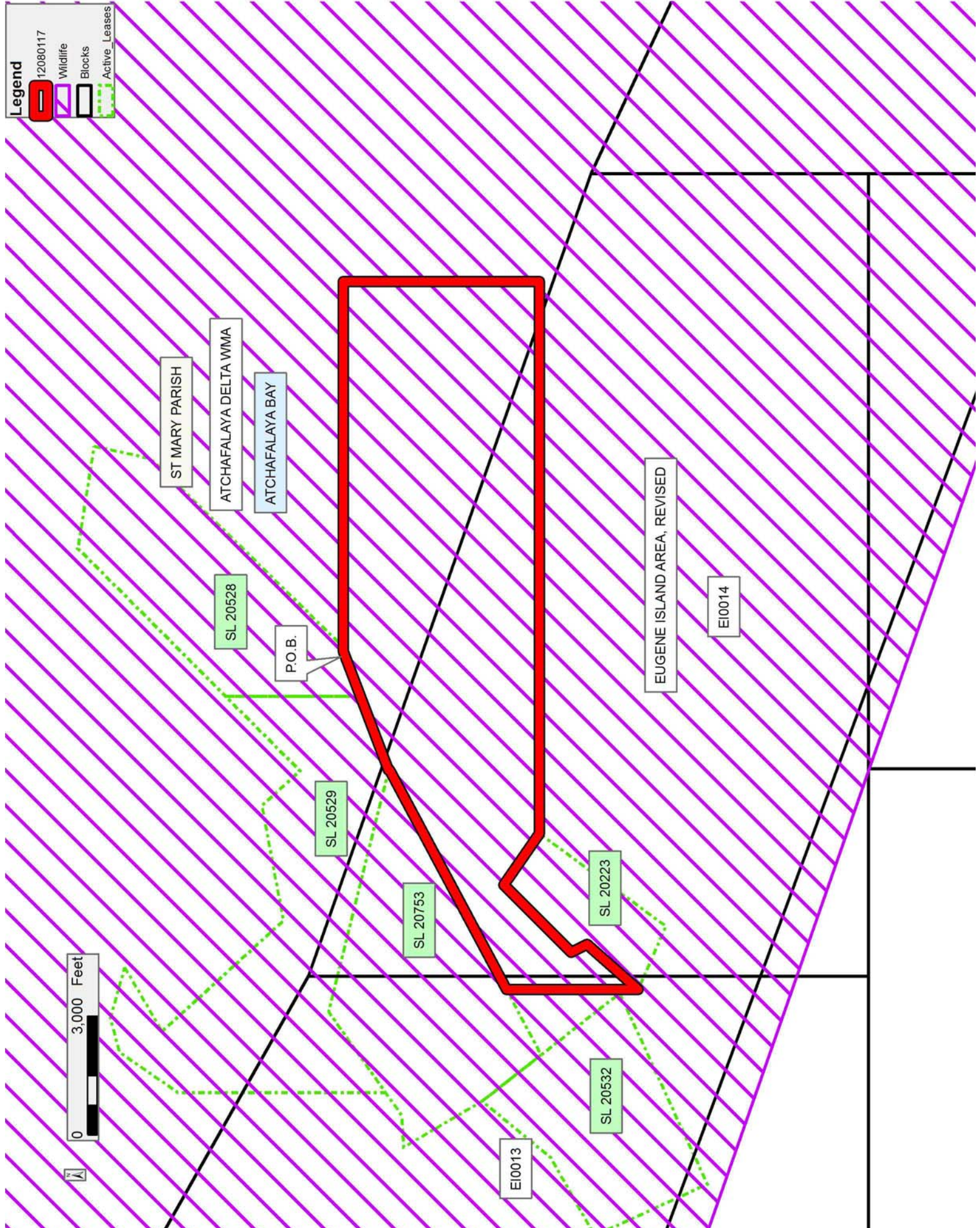
Applicant: THEOPHILUS OIL, GAS & LAND SERVICES, LLC

Bidder	Cash Payment	Price/Acre	Rental	Oil	Gas	Other



**Legend**

- 12080117
- Wildlife
- Blocks
- Active\_Leases





**TRACT 42876 - St. Mary Parish, Louisiana**

A portion of all lands located above the mean high water mark, together with lands now or formerly constituting the beds and bottoms of any water body of whatever description or nature belonging to the State of Louisiana which is now located within the boundaries of the Atchafalaya Delta Wildlife Management Area and not presently under mineral lease by the State of Louisiana on August 8, 2012, and more particularly located as follows: Beginning at the Southeast corner of State Lease No. 20693, also being the Southwest corner of State Lease No. 20692, said corner lying within the Atchafalaya Delta Wildlife Management Area, having Coordinates of X = 1,977,934.27 and Y = 262,446.90; thence along the boundary of said State Lease No. 20692 the following courses and distances: South 36 degrees 53 minutes 34 seconds East 814.12 feet to a corner having Coordinates of X = 1,978,423.00 and Y = 261,795.80, South 87 degrees 42 minutes 46 seconds East 1,378.10 feet to a corner having Coordinates of X = 1,979,800.00 and Y = 261,740.80 and North 49 degrees 37 minutes 19 seconds East 3,718.89 feet to its Northeast corner, also being a Southern corner of State Lease No. 20255 having Coordinates of X = 1,982,633.00 and Y = 264,150.00; thence North 67 degrees 17 minutes 26 seconds East 4,476.00 feet along the South boundary of said State Lease No. 20255 to its Southeast corner having Coordinates of X = 1,986,762.00 and Y = 265,878.00; thence South 7,746.00 feet to a point having Coordinates of X = 1,986,762.00 and Y = 258,132.00; thence West 8,827.73 feet to a point having Coordinates of X = 1,977,934.27 and Y = 258,132.00; thence North 4,314.90 feet to the point of beginning, containing approximately **1,125.09 acres**, all as more particularly outlined on a plat on file in the Office of Mineral Resources, Department of Natural Resources. All bearings, distances and coordinates are based on Louisiana Coordinate System of 1927, (South Zone).

NOTE: The above description of the Tract nominated for lease has been provided and corrected, where required, exclusively by the nomination party. Any mineral lease selected from this Tract and awarded by the Louisiana State Mineral and Energy Board shall be without warranty of any kind, either express, implied, or statutory, including, but not limited to, the implied warranties of merchantability and fitness for a particular purpose. Should the mineral lease awarded by the Louisiana State Mineral and Energy Board be subsequently modified, cancelled or abrogated due to the existence of conflicting leases, operating agreements, private claims or other future obligations or conditions which may affect all or any portion of the leased Tract, it shall not relieve the Lessee of the obligation to pay any bonus due thereon to the Louisiana State Mineral and Energy Board, nor shall the Louisiana State Mineral and Energy Board be obligated to refund any consideration paid by the Lessor prior to such modification, cancellation, or abrogation, including, but not limited to, bonuses, rentals and royalties.

NOTE: The mineral lease is located in the Atchafalaya Delta WMA under the jurisdiction of the Louisiana Department of Wildlife and Fisheries which



has promulgated rules and regulations for the protection of game and wildlife on the aforesaid Tract and, therefore, shall be subject to said rules and regulations, a copy of which shall be attached to the mineral leases. In addition to the specific rules and regulations applicable, the following shall apply regarding operations under this mineral lease:

- No activities will be allowed without written authorization of the Louisiana Department of Wildlife and Fisheries.
- Proposed projects will be evaluated on a case by case basis. Modifications to proposed project features including but not limited to access routes, spoil placement, well sites, flowlines and appurtenant structures may be required by the Department of Wildlife and Fisheries.
- Compliance with the Atchafalaya Delta WMA regulations will be required unless otherwise specified by the Department of Wildlife and Fisheries.
- Compensatory mitigation will be required to offset unavoidable wetland impacts.
- Compensation and/or oyster seed ground surveys may be required by the Department for potential impacts to productive oyster seed grounds located within the management area.
- Removal of all structures, facilities and equipment will be required within 120 days of abandonment unless otherwise agreed to in writing by the Louisiana Department of Wildlife and Fisheries.
- No activities will be allowed during the hunting season unless approved by the Department.
- This tract is located within the emerging Atchafalaya Delta. No activities will be allowed on emergent islands, sub aerial mudflats or vegetated wetlands. Drilling will be restricted to passes and open water bays. The Louisiana Department of Wildlife and Fisheries (LDWF) shall have discretion to determine access routes. In the event that LDWF approves of dredging for access, LDWF shall have discretion to require hydraulic or spray dredging to reduce environmental impacts.
- Prior to submitting application for wetland permits to Federal and State permitting agencies the leaseholder shall coordinate project details with the Department of Wildlife and Fisheries. Contact person for the Department will be Mike Windham at (504)284-5268.

Additionally, the Department will require a minimum bonus of \$350.00 per acre and a minimum royalty of 25%.

NOTE: The above described tract may be in the vicinity of existing shell reefs where drilling and dredging operations must be conducted in strict conformity with the regulations adopted by the Louisiana Department of Wildlife and Fisheries and/or the U.S. Corps of Engineers, U.S. Army.

NOTE: The State of Louisiana does hereby reserve, and this lease shall be subject to, the imprescriptible right of surface use in the nature of a servitude in favor of the Department of Natural Resources, including its Offices and Commissions, for the sole purpose of implementing, constructing, servicing and maintaining approved coastal zone management and/or restoration projects. Utilization of any and all rights derived under this lease by the mineral lessee, its agents, successors or assigns, shall not interfere with nor hinder the reasonable surface use by the Department of Natural Resources, its Offices or Commissions, as herein above reserved.

NOTE: This tract is located in an area designated by the Louisiana Legislature or the Wildlife and Fisheries Commission as a Public Oyster Seed Ground, Reservation, or area of Calcasieu or Sabine Lake. Proposed projects occurring in these areas will be evaluated on a case by case basis by Louisiana Department of Wildlife & Fisheries. Modifications to proposed project features including, but not limited to, access routes, well sites, flowlines, and appurtenant structures maybe required by the Louisiana Department of Wildlife and Fisheries. In addition, compensatory mitigation will be required to offset unavoidable habitat impacts.

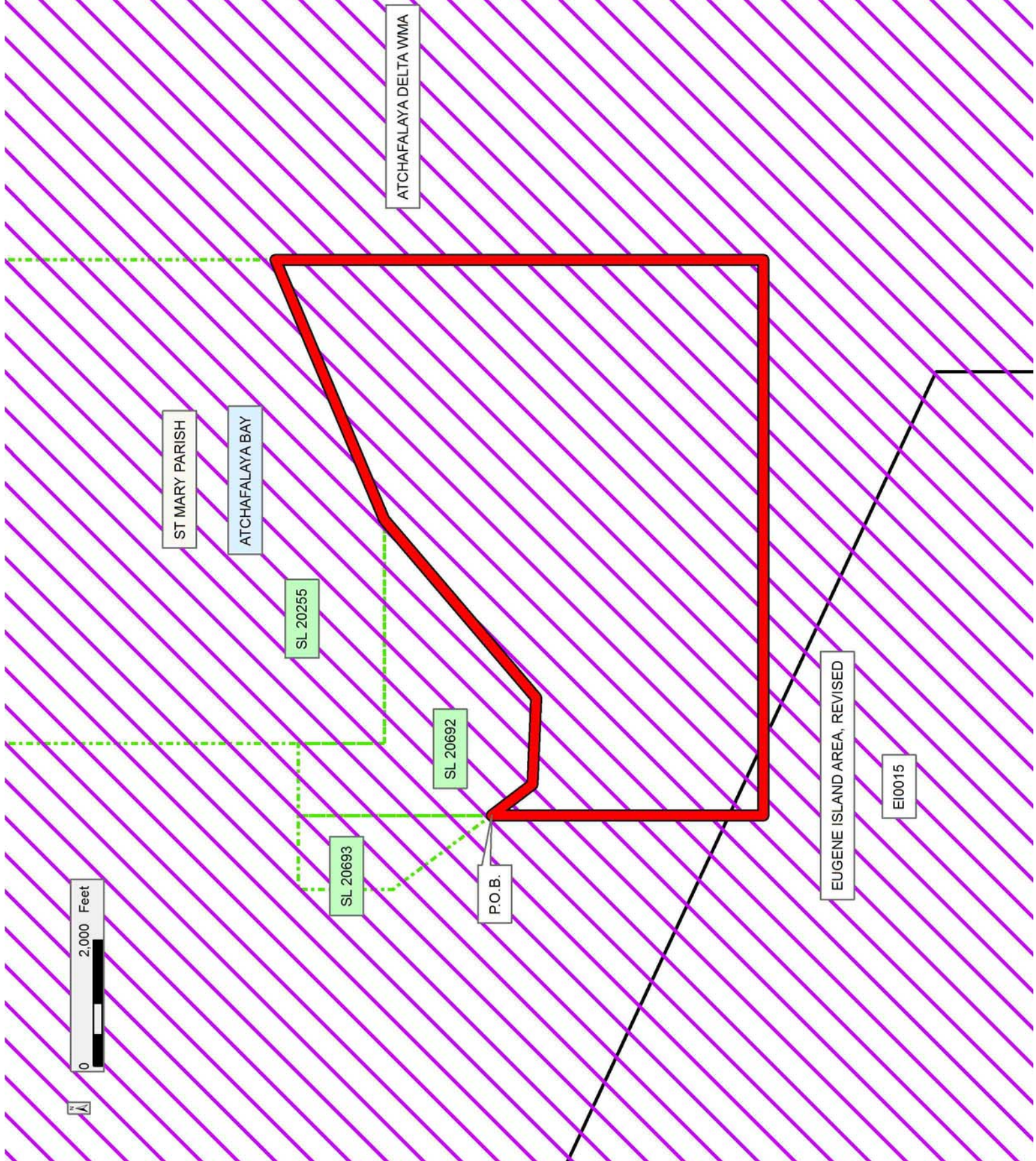
Applicant: THEOPHILUS OIL, GAS & LAND SERVICES, LLC

Bidder	Cash Payment	Price/Acre	Rental	Oil	Gas	Other



**Legend**

- 12080123
- Wildlife
- Blocks
- Active\_Leases





**TRACT 42877 - St. Mary Parish, Louisiana**

A portion of all lands located above the mean high water mark, together with lands now or formerly constituting the beds and bottoms of any water body of whatever description or nature belonging to the State of Louisiana which is now located within the boundaries of the Atchafalaya Delta Wildlife Management Area and not presently under mineral lease by the State of Louisiana on August 8, 2012, and more particularly located as follows: Beginning at a point within the Atchafalaya Delta Wildlife Management Area, having Coordinates of X = 1,955,845.85 and Y = 263,700.00; thence East 11,391.56 feet to a point having Coordinates of X = 1,967,237.41 and Y = 263,700.00; thence South 5,568.00 feet to a point on the East boundary of State Lease No. 20694 having Coordinates of X = 1,967,237.41 and Y = 258,132.00; thence along the East, North and West boundary of said State Lease No. 20694 the following courses and distances: North 29 degrees 43 minutes 22 seconds West 2,506.60 feet to a corner having Coordinates of X = 1,965,994.63 and Y = 260,308.82, South 57 degrees 21 minutes 32 seconds West 5,602.71 feet to a corner having Coordinates of X = 1,961,276.78 and Y = 257,286.86 and South 24 degrees 00 minutes 22 seconds East 5,356.15 feet to its Southwest corner also being the West corner of State Lease No. 20695 located on the South boundary of the Atchafalaya Delta Wildlife Management Area having Coordinates of X = 1,963,455.85 and Y = 252,394.01; thence North 70 degrees 45 minutes 00 seconds West 4,297.77 feet along the South boundary of the said Atchafalaya Delta Wildlife Management Area to a point on the East boundary of State Lease No. 7870, as amended having Coordinates of X = 1,959,398.37 and Y = 253,810.95; thence along the East boundary of said State Lease No. 7870 the following courses and distances: North 19 degrees 17 minutes 26 seconds West 463.27 feet to a corner having Coordinates of X = 1,959,245.33 and Y = 254,248.21 and Northwesterly along an arc having a radius of 8,050.00 feet and a center located at X = 1,966,871.96 and Y = 256,824.46 to its Northeast corner, also being the Southeast corner of State Lease No. 7868, as amended having Coordinates of X = 1,958,950.07 and Y = 255,394.00; thence along the East and North boundary of said State Lease No. 7868 the following courses and distances: Northwesterly along an arc having a radius of 8,050.00 feet and a center located at X = 1,966,871.92 and Y = 256,824.66 to a corner having Coordinates of X = 1,958,905.82 and Y = 255,665.46, North 06 degrees 14 minutes 24 seconds West 279.42 feet to a corner having Coordinates of X = 1,958,875.45 and Y = 255,943.22, South 80 degrees 59 minutes 39 seconds West 1,011.34 feet to a corner having Coordinates of X = 1,957,876.58 and Y = 255,784.91 and South 77 degrees 20 minutes 02 seconds West 132.58 feet to its Northwest corner, also being the Northeast corner of the East portion of State Lease No. 1666, as amended having Coordinates of X = 1,957,747.23 and Y = 255,755.84; thence along the North boundary of said State Lease No. 1666 the following courses and distances: South 77 degrees 20 minutes 07 seconds West 830.81 feet to a corner having Coordinates of X = 1,956,936.63 and Y = 255,573.69 and South 80 degrees 38 minutes 43 seconds West 1,105.48 feet to its most West corner located on the North boundary of said State Lease No. 7870 having Coordinates of X = 1,955,845.85 and Y

= 255,394.00; thence North 8,306.00 feet to the point of beginning, containing approximately **1,869.53 acres**, all as more particularly outlined on a plat on file in the Office of Mineral Resources, Department of Natural Resources. All bearings, distances and coordinates are based on Louisiana Coordinate System of 1927, (South Zone).

NOTE: The above description of the Tract nominated for lease has been provided and corrected, where required, exclusively by the nomination party. Any mineral lease selected from this Tract and awarded by the Louisiana State Mineral and Energy Board shall be without warranty of any kind, either express, implied, or statutory, including, but not limited to, the implied warranties of merchantability and fitness for a particular purpose. Should the mineral lease awarded by the Louisiana State Mineral and Energy Board be subsequently modified, cancelled or abrogated due to the existence of conflicting leases, operating agreements, private claims or other future obligations or conditions which may affect all or any portion of the leased Tract, it shall not relieve the Lessee of the obligation to pay any bonus due thereon to the Louisiana State Mineral and Energy Board, nor shall the Louisiana State Mineral and Energy Board be obligated to refund any consideration paid by the Lessor prior to such modification, cancellation, or abrogation, including, but not limited to, bonuses, rentals and royalties.

NOTE: The mineral lease is located in the Atchafalaya Delta WMA under the jurisdiction of the Louisiana Department of Wildlife and Fisheries which has promulgated rules and regulations for the protection of game and wildlife on the aforesaid Tract and, therefore, shall be subject to said rules and regulations, a copy of which shall be attached to the mineral leases. In addition to the specific rules and regulations applicable, the following shall apply regarding operations under this mineral lease:

- No activities will be allowed without written authorization of the Louisiana Department of Wildlife and Fisheries.
- Proposed projects will be evaluated on a case by case basis. Modifications to proposed project features including but not limited to access routes, spoil placement, well sites, flowlines and appurtenant structures may be required by the Department of Wildlife and Fisheries.
- Compliance with the Atchafalaya Delta WMA regulations will be required unless otherwise specified by the Department of Wildlife and Fisheries.
- Compensatory mitigation will be required to offset unavoidable wetland impacts.
- Compensation and/or oyster seed ground surveys may be required by the Department for potential impacts to productive oyster seed grounds located within the management area.

- Removal of all structures, facilities and equipment will be required within 120 days of abandonment unless otherwise agreed to in writing by the Louisiana Department of Wildlife and Fisheries.
- No activities will be allowed during the hunting season unless approved by the Department.
- This tract is located within the emerging Atchafalaya Delta. No activities will be allowed on emergent islands, sub aerial mudflats or vegetated wetlands. Drilling will be restricted to passes and open water bays. The Louisiana Department of Wildlife and Fisheries (LDWF) shall have discretion to determine access routes. In the event that LDWF approves of dredging for access, LDWF shall have discretion to require hydraulic or spray dredging to reduce environmental impacts.
- Prior to submitting application for wetland permits to Federal and State permitting agencies the leaseholder shall coordinate project details with the Department of Wildlife and Fisheries. Contact person for the Department will be Mike Windham at (504)284-5268.

Additionally, the Department will require a minimum bonus of \$350.00 per acre and a minimum royalty of 25%.

NOTE: The above described tract may be in the vicinity of existing shell reefs where drilling and dredging operations must be conducted in strict conformity with the regulations adopted by the Louisiana Department of Wildlife and Fisheries and/or the U.S. Corps of Engineers, U.S. Army.

NOTE: The State of Louisiana does hereby reserve, and this lease shall be subject to, the imprescriptible right of surface use in the nature of a servitude in favor of the Department of Natural Resources, including its Offices and Commissions, for the sole purpose of implementing, constructing, servicing and maintaining approved coastal zone management and/or restoration projects. Utilization of any and all rights derived under this lease by the mineral lessee, its agents, successors or assigns, shall not interfere with nor hinder the reasonable surface use by the Department of Natural Resources, its Offices or Commissions, as herein above reserved.

NOTE: This tract is located in an area designated by the Louisiana Legislature or the Wildlife and Fisheries Commission as a Public Oyster Seed Ground, Reservation, or area of Calcasieu or Sabine Lake. Proposed projects occurring in these areas will be evaluated on a case by case basis by Louisiana Department of Wildlife & Fisheries. Modifications to proposed project features including, but not limited to, access routes, well sites, flowlines, and appurtenant structures maybe required by the Louisiana Department of Wildlife and Fisheries. In addition, compensatory mitigation will be required to offset unavoidable habitat impacts.

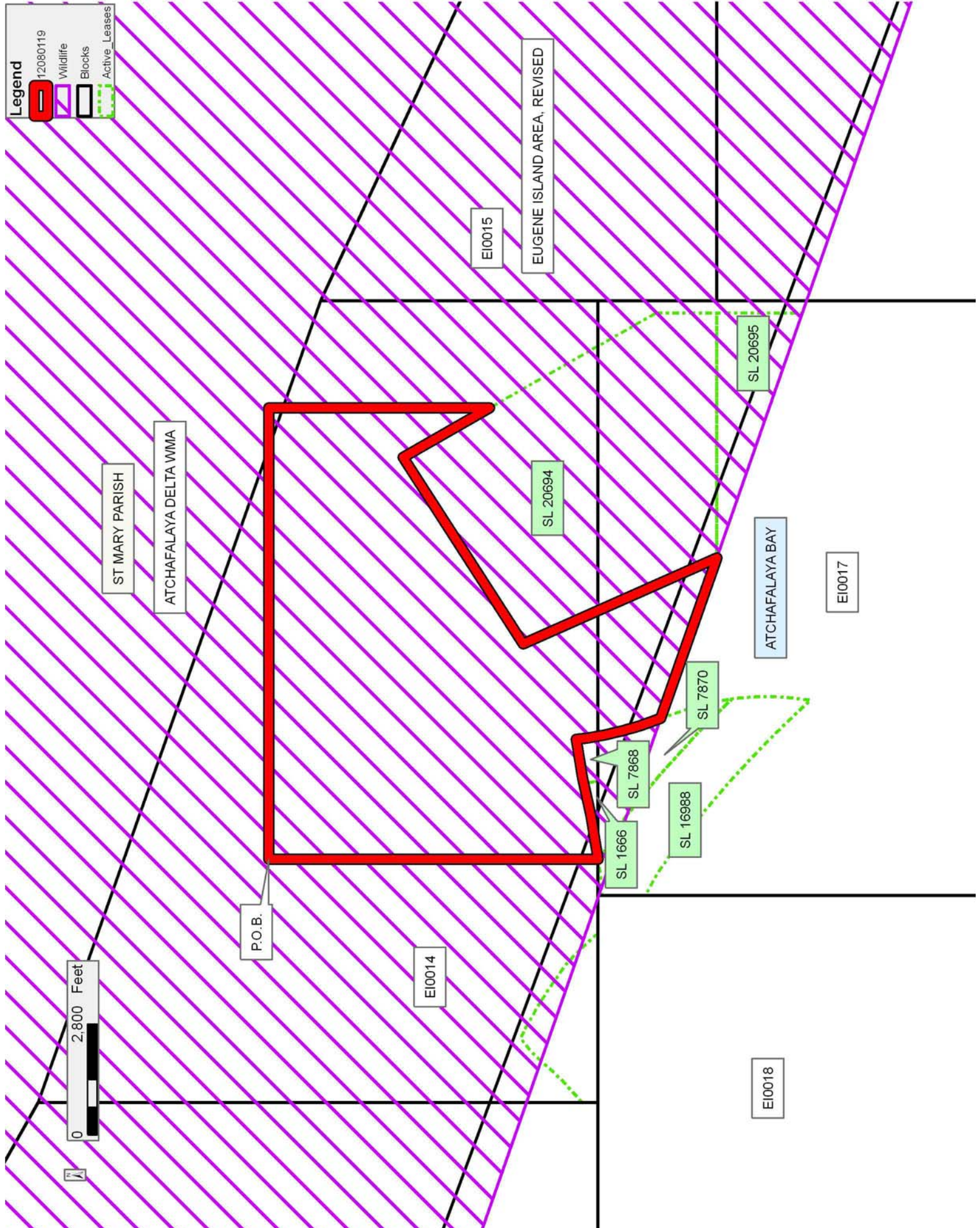


Applicant: THEOPHILUS OIL, GAS & LAND SERVICES, LLC

Bidder	Cash Payment	Price/Acre	Rental	Oil	Gas	Other

**Legend**

- 12080119
- Wildlife
- Blocks
- Active Leases



**TRACT 42878 - St. Mary Parish, Louisiana**

A portion of all lands located above the mean high water mark, together with lands now or formerly constituting the beds and bottoms of any water body of whatever description or nature belonging to the State of Louisiana which is now located within the boundaries of the Atchafalaya Delta Wildlife Management Area and not presently under mineral lease by the State of Louisiana on August 8, 2012, and more particularly located as follows: Beginning at a point within the Atchafalaya Delta Wildlife Management Area, also being the Northeast corner of State Lease No. 20223 having Coordinates of X = 1,953,300.00 and Y = 263,700.00; thence East 2,545.85 feet to a point having Coordinates of X = 1,955,845.85 and Y = 263,700.00; thence South 8,306.00 feet to the most West corner of the East portion of State Lease No. 1666, as amended, said corner located on the North boundary of State Lease No. 7870, as amended having Coordinates of X = 1,955,845.85 and Y = 255,394.00; thence South 80 degrees 38 minutes 33 seconds West 28.78 feet along the North boundary of said State Lease No. 7870 to its most West corner, also being a corner on the North boundary of State Lease No. 16988 having Coordinates of X = 1,955,817.45 and Y = 255,389.32; thence along the North boundary of said State Lease No. 16988 the following courses and distances: South 80 degrees 38 minutes 51 seconds West 143.07 feet to a corner having Coordinates of X = 1,955,676.28 and Y = 255,366.07 and Westerly along an arc having a radius of 6,200.00 feet and a center located at X = 1,954,689.23 and Y = 261,487.00 to a point located on the South boundary of the Atchafalaya Delta Wildlife Management Area having Coordinates of X = 1,955,127.29 and Y = 255,302.49; thence North 70 degrees 45 minutes 00 seconds West 1,667.23 feet along the said South boundary of the Atchafalaya Delta Wildlife Management Area to a point on the Northeast boundary of the West portion of said State Lease No. 1666 having Coordinates of X = 1,953,553.27 and Y = 255,852.16; thence along the Northeast and Northwest boundary of said State Lease No. 1666 the following courses and distances: North 43 degrees 37 minutes 43 seconds West 135.17 feet to a corner having Coordinates of X = 1,953,460.01 and Y = 255,950.00, North 48 degrees 00 minutes 46 seconds West 403.61 feet to a corner having Coordinates of X = 1,953,160.01 and Y = 256,220.00, North 55 degrees 04 minutes 09 seconds West 768.44 feet to a corner having Coordinates of X = 1,952,530.01 and Y = 256,660.00, North 57 degrees 50 minutes 52 seconds West 506.93 feet to a point having Coordinates of X = 1,952,100.82 and Y = 256,929.77, North 60 degrees 49 minutes 54 seconds West 631.63 feet to a corner having Coordinates of X = 1,951,549.29 and Y = 257,237.61, North 63 degrees 53 minutes 10 seconds West 255.35 feet to a corner having Coordinates of X = 1,951,320.01 and Y = 257,350.00, South 51 degrees 44 minutes 10 seconds West 147.85 feet to a point having Coordinates of X = 1,951,203.92 and Y = 257,258.44, South 51 degrees 08 minutes 48 seconds West 300.38 feet to a corner having Coordinates of X = 1,950,970.00 and Y = 257,070.00 and South 42 degrees 36 minutes 51 seconds West 324.68 feet to a point on the South boundary of the said Atchafalaya Delta Wildlife Management Area having Coordinates of X = 1,950,750.17 and Y = 256,831.06; thence North 70 degrees 45 minutes 00 seconds West 1,475.83 feet along the South boundary



of the said Atchafalaya Delta Wildlife Management Area to a point having Coordinates of X = 1,949,356.86 and Y = 257,317.63; thence North 2,911.40 feet to a point on the Southwest boundary of State Lease No. 20224 having Coordinates of X = 1,949,356.86 and Y = 260,229.02; thence along the Southwest boundary and the Southeast boundary of said State Lease No. 20224 the following courses and distances: South 32 degrees 00 minutes 19 seconds East 1,213.47 feet to a corner having Coordinates of X = 1,950,000.00 and Y = 259,200.00 and North 36 degrees 15 minutes 14 seconds East 1,617.81 feet to its Northeast corner, also being the Southeast corner of said State Lease No. 20223 having Coordinates of X = 1,950,956.72 and Y = 260,504.61; thence North 36 degrees 15 minutes 14 seconds East 3,962.51 feet along the East boundary of said State Lease No. 20223 to the point of beginning, containing approximately **859.89 acres**, all as more particularly outlined on a plat on file in the Office of Mineral Resources, Department of Natural Resources. All bearings, distances and coordinates are based on Louisiana Coordinate System of 1927, (South Zone).

NOTE: The above description of the Tract nominated for lease has been provided and corrected, where required, exclusively by the nomination party. Any mineral lease selected from this Tract and awarded by the Louisiana State Mineral and Energy Board shall be without warranty of any kind, either express, implied, or statutory, including, but not limited to, the implied warranties of merchantability and fitness for a particular purpose. Should the mineral lease awarded by the Louisiana State Mineral and Energy Board be subsequently modified, cancelled or abrogated due to the existence of conflicting leases, operating agreements, private claims or other future obligations or conditions which may affect all or any portion of the leased Tract, it shall not relieve the Lessee of the obligation to pay any bonus due thereon to the Louisiana State Mineral and Energy Board, nor shall the Louisiana State Mineral and Energy Board be obligated to refund any consideration paid by the Lessor prior to such modification, cancellation, or abrogation, including, but not limited to, bonuses, rentals and royalties.

NOTE: The mineral lease is located in the Atchafalaya Delta WMA under the jurisdiction of the Louisiana Department of Wildlife and Fisheries which has promulgated rules and regulations for the protection of game and wildlife on the aforesaid Tract and, therefore, shall be subject to said rules and regulations, a copy of which shall be attached to the mineral leases. In addition to the specific rules and regulations applicable, the following shall apply regarding operations under this mineral lease:

- No activities will be allowed without written authorization of the Louisiana Department of Wildlife and Fisheries.
- Proposed projects will be evaluated on a case by case basis. Modifications to proposed project features including but not limited to access routes, spoil placement, well sites, flowlines and

appurtenant structures may be required by the Department of Wildlife and Fisheries.

- Compliance with the Atchafalaya Delta WMA regulations will be required unless otherwise specified by the Department of Wildlife and Fisheries.
- Compensatory mitigation will be required to offset unavoidable wetland impacts.
- Compensation and/or oyster seed ground surveys may be required by the Department for potential impacts to productive oyster seed grounds located within the management area.
- Removal of all structures, facilities and equipment will be required within 120 days of abandonment unless otherwise agreed to in writing by the Louisiana Department of Wildlife and Fisheries.
- No activities will be allowed during the hunting season unless approved by the Department.
- This tract is located within the emerging Atchafalaya Delta. No activities will be allowed on emergent islands, sub aerial mudflats or vegetated wetlands. Drilling will be restricted to passes and open water bays. The Louisiana Department of Wildlife and Fisheries (LDWF) shall have discretion to determine access routes. In the event that LDWF approves of dredging for access, LDWF shall have discretion to require hydraulic or spray dredging to reduce environmental impacts.
- Prior to submitting application for wetland permits to Federal and State permitting agencies the leaseholder shall coordinate project details with the Department of Wildlife and Fisheries. Contact person for the Department will be Mike Windham at (504)284-5268.

Additionally, the Department will require a minimum bonus of \$350.00 per acre and a minimum royalty of 25%.

NOTE: The above described tract may be in the vicinity of existing shell reefs where drilling and dredging operations must be conducted in strict conformity with the regulations adopted by the Louisiana Department of Wildlife and Fisheries and/or the U.S. Corps of Engineers, U.S. Army.

NOTE: The State of Louisiana does hereby reserve, and this lease shall be subject to, the imprescriptible right of surface use in the nature of a servitude in favor of the Department of Natural Resources, including its Offices and Commissions, for the sole purpose of implementing, constructing, servicing and maintaining approved coastal zone management and/or restoration projects. Utilization of any and all rights derived under this lease by the mineral lessee, its agents, successors or assigns, shall not interfere with nor hinder the reasonable surface use by the Department of Natural Resources, its Offices or Commissions, as herein above reserved.

NOTE: This tract is located in an area designated by the Louisiana Legislature or the Wildlife and Fisheries Commission as a Public Oyster Seed Ground, Reservation, or area of Calcasieu or Sabine Lake. Proposed projects occurring in these areas will be evaluated on a case by case basis by Louisiana Department of Wildlife & Fisheries. Modifications to proposed project features including, but not limited to, access routes, well sites, flowlines, and appurtenant structures maybe required by the Louisiana Department of Wildlife and Fisheries. In addition, compensatory mitigation will be required to offset unavoidable habitat impacts.

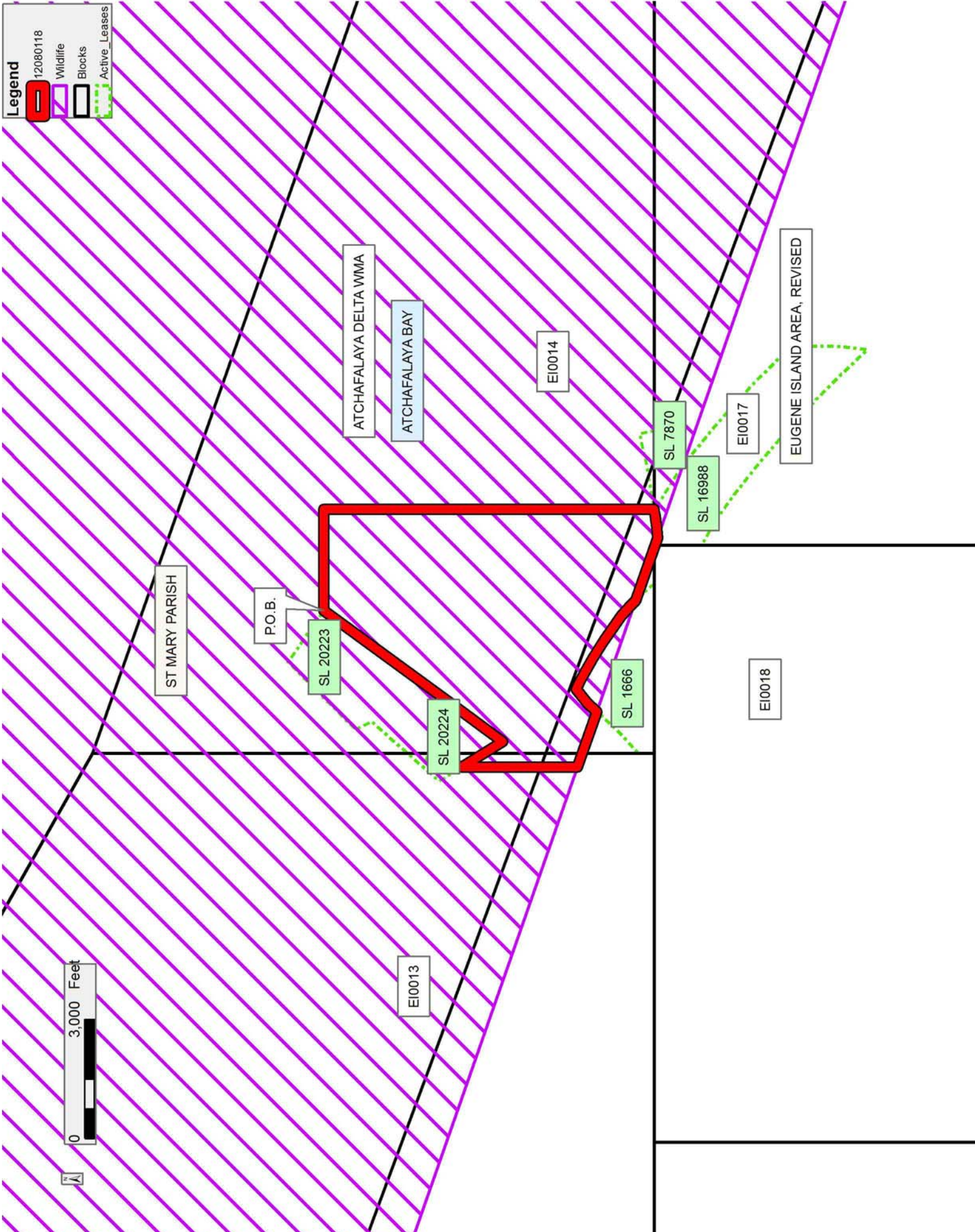
Applicant: THEOPHILUS OIL, GAS & LAND SERVICES, LLC

Bidder	Cash Payment	Price/Acre	Rental	Oil	Gas	Other



**Legend**

- 12080118
- Wildlife
- Blocks
- Active\_Leases



**TRACT 42879 - St. Mary Parish, Louisiana**

A portion of all lands located above the mean high water mark, together with lands now or formerly constituting the beds and bottoms of any water body of whatever description or nature belonging to the State of Louisiana which is now located within the boundaries of the Atchafalaya Delta Wildlife Management Area and not presently under mineral lease by the State of Louisiana on August 8, 2012, and more particularly located as follows: Beginning at a point within the Atchafalaya Delta Wildlife Management Area, also being a point on the East boundary of State Lease No. 20694 having Coordinates of X = 1,967,237.41 and Y = 258,132.00; thence East 10,696.86 feet to a point having Coordinates of X = 1,977,934.27 and Y = 258,132.00; thence South 10,794.11 feet to a point on the South boundary of the Atchafalaya Delta Wildlife Management Area having Coordinates of X = 1,977,934.27 and Y = 247,337.89; thence North 70 degrees 45 minutes 00 seconds West 8,789.12 feet along the South boundary of the said Atchafalaya Delta Wildlife Management Area to the point of intersection with the East boundary or a projection thereof of State Lease No. 20695 having Coordinates of X = 1,969,636.56 and Y = 250,235.59; thence North 2,158.42 feet along the East boundary or a projection thereof of said State Lease No. 20695 to its Northeast corner, also being the Southeast corner of said State Lease No. 20694 having Coordinates of X = 1,969,636.56 and Y = 252,394.01; thence North 1,535.68 feet along the East boundary of said State Lease No. 20694 to the Southwest corner of State Lease No. 20959 having Coordinates of X = 1,969,636.56 and Y = 253,929.69; thence along the South, East and North boundary of said State Lease No. 20959 the following courses and distances: East 2,179.44 feet to a corner having Coordinates of X = 1,971,816.00 and Y = 253,929.69, North 2,980.31 feet to a corner having Coordinates of X = 1,971,816.00 and Y = 256,910.00 and West 3,880.94 feet to its Northwest corner located on the East boundary of said State Lease No. 20694 having Coordinates of X = 1,967,935.06 and Y = 256,910.00; thence North 29 degrees 43 minutes 21 seconds West 1,407.13 feet along the East boundary of said State Lease No. 20694 to the point of beginning, containing approximately **1,688.58 acres**, all as more particularly outlined on a plat on file in the Office of Mineral Resources, Department of Natural Resources. All bearings, distances and coordinates are based on Louisiana Coordinate System of 1927, (South Zone).

NOTE: The above description of the Tract nominated for lease has been provided and corrected, where required, exclusively by the nomination party. Any mineral lease selected from this Tract and awarded by the Louisiana State Mineral and Energy Board shall be without warranty of any kind, either express, implied, or statutory, including, but not limited to, the implied warranties of merchantability and fitness for a particular purpose. Should the mineral lease awarded by the Louisiana State Mineral and Energy Board be subsequently modified, cancelled or abrogated due to the existence of conflicting leases, operating agreements, private claims or other future obligations or conditions which may affect all or any portion of the leased Tract, it shall not relieve the Lessee of the

obligation to pay any bonus due thereon to the Louisiana State Mineral and Energy Board, nor shall the Louisiana State Mineral and Energy Board be obligated to refund any consideration paid by the Lessor prior to such modification, cancellation, or abrogation, including, but not limited to, bonuses, rentals and royalties.

NOTE: The mineral lease is located in the Atchafalaya Delta WMA under the jurisdiction of the Louisiana Department of Wildlife and Fisheries which has promulgated rules and regulations for the protection of game and wildlife on the aforesaid Tract and, therefore, shall be subject to said rules and regulations, a copy of which shall be attached to the mineral leases. In addition to the specific rules and regulations applicable, the following shall apply regarding operations under this mineral lease:

- No activities will be allowed without written authorization of the Louisiana Department of Wildlife and Fisheries.
- Proposed projects will be evaluated on a case by case basis. Modifications to proposed project features including but not limited to access routes, spoil placement, well sites, flowlines and appurtenant structures may be required by the Department of Wildlife and Fisheries.
- Compliance with the Atchafalaya Delta WMA regulations will be required unless otherwise specified by the Department of Wildlife and Fisheries.
- Compensatory mitigation will be required to offset unavoidable wetland impacts.
- Compensation and/or oyster seed ground surveys may be required by the Department for potential impacts to productive oyster seed grounds located within the management area.
- Removal of all structures, facilities and equipment will be required within 120 days of abandonment unless otherwise agreed to in writing by the Louisiana Department of Wildlife and Fisheries.
- No activities will be allowed during the hunting season unless approved by the Department.
- This tract is located within the emerging Atchafalaya Delta. No activities will be allowed on emergent islands, sub aerial mudflats or vegetated wetlands. Drilling will be restricted to passes and open water bays. The Louisiana Department of Wildlife and Fisheries (LDWF) shall have discretion to determine access routes. In the event that LDWF approves of dredging for access, LDWF shall have discretion to require hydraulic or spray dredging to reduce environmental impacts.
- Prior to submitting application for wetland permits to Federal and State permitting agencies the leaseholder shall coordinate project details with the Department of Wildlife and Fisheries. Contact person for the Department will be Mike Windham at (504)284-5268.



Additionally, the Department will require a minimum bonus of \$350.00 per acre and a minimum royalty of 25%.

NOTE: The above described tract may be in the vicinity of existing shell reefs where drilling and dredging operations must be conducted in strict conformity with the regulations adopted by the Louisiana Department of Wildlife and Fisheries and/or the U.S. Corps of Engineers, U.S. Army.

NOTE: The State of Louisiana does hereby reserve, and this lease shall be subject to, the imprescriptible right of surface use in the nature of a servitude in favor of the Department of Natural Resources, including its Offices and Commissions, for the sole purpose of implementing, constructing, servicing and maintaining approved coastal zone management and/or restoration projects. Utilization of any and all rights derived under this lease by the mineral lessee, its agents, successors or assigns, shall not interfere with nor hinder the reasonable surface use by the Department of Natural Resources, its Offices or Commissions, as herein above reserved.

NOTE: It appears, according to our records, that a portion of this Tract is located within the restrictive safety fairway area as set out by the Corps of Engineers, U.S. Army and/or the restrictive anchorage area as set out by the U.S. Coast Guard.

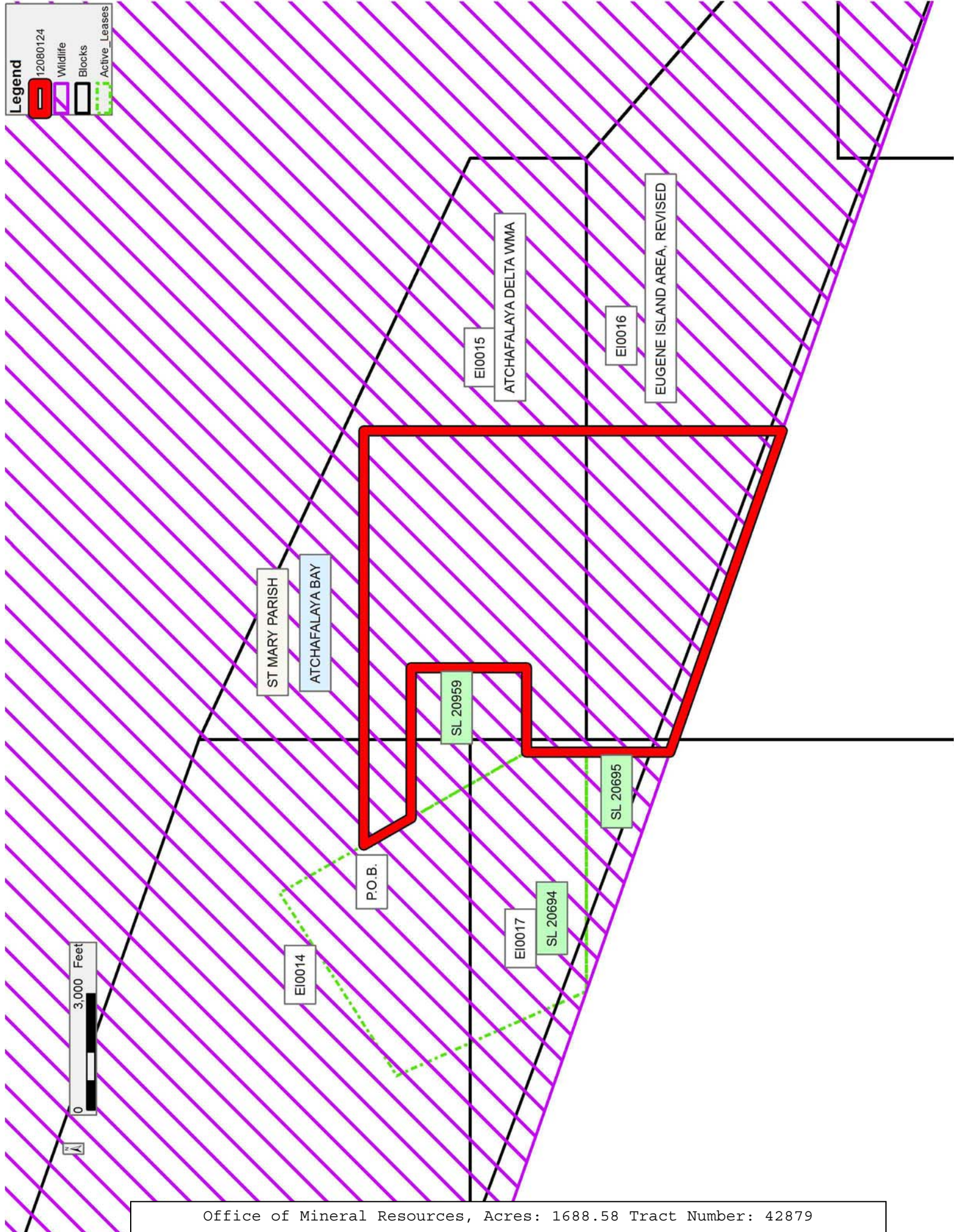
NOTE: This tract is located in an area designated by the Louisiana Legislature or the Wildlife and Fisheries Commission as a Public Oyster Seed Ground, Reservation, or area of Calcasieu or Sabine Lake. Proposed projects occurring in these areas will be evaluated on a case by case basis by Louisiana Department of Wildlife & Fisheries. Modifications to proposed project features including, but not limited to, access routes, well sites, flowlines, and appurtenant structures maybe required by the Louisiana Department of Wildlife and Fisheries. In addition, compensatory mitigation will be required to offset unavoidable habitat impacts.

Applicant: THEOPHILUS OIL, GAS & LAND SERVICES, LLC

Bidder	Cash Payment	Price/Acre	Rental	Oil	Gas	Other

**Legend**

- 12080124
- Wildlife
- Blocks
- Active\_Leases



**TRACT 42880 - St. Mary Parish, Louisiana**

A portion of all lands located above the mean high water mark, together with lands now or formerly constituting the beds and bottoms of any water body of whatever description or nature belonging to the State of Louisiana which is now located within the boundaries of the Atchafalaya Delta Wildlife Management Area and not presently under mineral lease by the State of Louisiana on August 8, 2012, and more particularly located as follows: Beginning at a point within the Atchafalaya Delta Wildlife Management Area, having Coordinates of X = 1,977,934.27 and Y = 258,132.00; thence East 8,827.73 feet to a point having Coordinates of X = 1,986,762.00 and Y = 258,132.00; thence South 13,876.92 feet to a point on the South boundary of the Atchafalaya Delta Wildlife Management Area having Coordinates of X = 1,986,762.00 and Y = 244,255.08; thence North 70 degrees 45 minutes 00 seconds West 9,350.53 feet along the South boundary of the Atchafalaya Delta Wildlife Management Area to a point having a Coordinates of X = 1,977,934.27 and Y = 247,337.89; thence North 10,794.11 feet to the point of beginning, containing approximately **2,499.88 acres**, all as more particularly outlined on a plat on file in the Office of Mineral Resources, Department of Natural Resources. All bearings, distances and coordinates are based on Louisiana Coordinate System of 1927, (South Zone).

NOTE: The above description of the Tract nominated for lease has been provided and corrected, where required, exclusively by the nomination party. Any mineral lease selected from this Tract and awarded by the Louisiana State Mineral and Energy Board shall be without warranty of any kind, either express, implied, or statutory, including, but not limited to, the implied warranties of merchantability and fitness for a particular purpose. Should the mineral lease awarded by the Louisiana State Mineral and Energy Board be subsequently modified, cancelled or abrogated due to the existence of conflicting leases, operating agreements, private claims or other future obligations or conditions which may affect all or any portion of the leased Tract, it shall not relieve the Lessee of the obligation to pay any bonus due thereon to the Louisiana State Mineral and Energy Board, nor shall the Louisiana State Mineral and Energy Board be obligated to refund any consideration paid by the Lessor prior to such modification, cancellation, or abrogation, including, but not limited to, bonuses, rentals and royalties.

NOTE: The mineral lease is located in the Atchafalaya Delta WMA under the jurisdiction of the Louisiana Department of Wildlife and Fisheries which has promulgated rules and regulations for the protection of game and wildlife on the aforesaid Tract and, therefore, shall be subject to said rules and regulations, a copy of which shall be attached to the mineral leases. In addition to the specific rules and regulations applicable, the following shall apply regarding operations under this mineral lease:

- No activities will be allowed without written authorization of the Louisiana Department of Wildlife and Fisheries.



- Proposed projects will be evaluated on a case by case basis. Modifications to proposed project features including but not limited to access routes, spoil placement, well sites, flowlines and appurtenant structures may be required by the Department of Wildlife and Fisheries.
- Compliance with the Atchafalaya Delta WMA regulations will be required unless otherwise specified by the Department of Wildlife and Fisheries.
- Compensatory mitigation will be required to offset unavoidable wetland impacts.
- Compensation and/or oyster seed ground surveys may be required by the Department for potential impacts to productive oyster seed grounds located within the management area.
- Removal of all structures, facilities and equipment will be required within 120 days of abandonment unless otherwise agreed to in writing by the Louisiana Department of Wildlife and Fisheries.
- No activities will be allowed during the hunting season unless approved by the Department.
- This tract is located within the emerging Atchafalaya Delta. No activities will be allowed on emergent islands, sub aerial mudflats or vegetated wetlands. Drilling will be restricted to passes and open water bays. The Louisiana Department of Wildlife and Fisheries (LDWF) shall have discretion to determine access routes. In the event that LDWF approves of dredging for access, LDWF shall have discretion to require hydraulic or spray dredging to reduce environmental impacts.
- Prior to submitting application for wetland permits to Federal and State permitting agencies the leaseholder shall coordinate project details with the Department of Wildlife and Fisheries. Contact person for the Department will be Mike Windham at (504)284-5268.

Additionally, the Department will require a minimum bonus of \$350.00 per acre and a minimum royalty of 25%.

NOTE: The above described tract may be in the vicinity of existing shell reefs where drilling and dredging operations must be conducted in strict conformity with the regulations adopted by the Louisiana Department of Wildlife and Fisheries and/or the U.S. Corps of Engineers, U.S. Army.

NOTE: The State of Louisiana does hereby reserve, and this lease shall be subject to, the imprescriptible right of surface use in the nature of a servitude in favor of the Department of Natural Resources, including its Offices and Commissions, for the sole purpose of implementing, constructing, servicing and maintaining approved coastal zone management and/or restoration projects. Utilization of any and all rights derived under this lease by the mineral lessee, its agents, successors or assigns, shall not interfere with nor hinder the reasonable surface use by the

Department of Natural Resources, its Offices or Commissions, as herein above reserved.

NOTE: It appears, according to our records, that a portion of this Tract is located within the restrictive safety fairway area as set out by the Corps of Engineers, U.S. Army and/or the restrictive anchorage area as set out by the U.S. Coast Guard.

NOTE: This tract is located in an area designated by the Louisiana Legislature or the Wildlife and Fisheries Commission as a Public Oyster Seed Ground, Reservation, or area of Calcasieu or Sabine Lake. Proposed projects occurring in these areas will be evaluated on a case by case basis by Louisiana Department of Wildlife & Fisheries. Modifications to proposed project features including, but not limited to, access routes, well sites, flowlines, and appurtenant structures maybe required by the Louisiana Department of Wildlife and Fisheries. In addition, compensatory mitigation will be required to offset unavoidable habitat impacts.

Applicant: THEOPHILUS OIL, GAS & LAND SERVICES, LLC

Bidder	Cash Payment	Price/Acre	Rental	Oil	Gas	Other

**Legend**

- 12080125
- Wildlife
- Blocks

ST MARY PARISH

ATCHAFALAYA DELTA WMA

ATCHAFALAYA BAY

EI0036

P.O.B.

EI0015

EI0016

