

**TRACT 42895 - Bienville Bossier and Webster Parishes, Louisiana**

All of the lands now or formerly constituting the beds and bottoms of all water bodies of every nature and description as to which title is vested in the State of Louisiana, together with all islands arising therein and other lands formed by accretion or by reliction, where allowed by law, excepting tax adjudicated lands, and not presently under mineral lease on September 12, 2012, situated in Bienville Bossier and Webster Parishes, Louisiana, and more particularly described as follows: Beginning at a point have Coordinates of X = 1,741,055.18 and Y = 640,382.01; thence South 15,988.00 feet to a point having Coordinates of X = 1,741,055.18 and Y = 624,394.01; thence West 5,413.00 feet to a point having Coordinates of X = 1,735,642.18 and Y = 624,394.01; thence North 5,385.00 feet to a point having Coordinates of X = 1,735,642.18 and Y = 629,779.01; thence North 89 degrees 58 minutes 39 seconds West 5,192.18 feet to a point on the Eastern boundary of State Lease No. 20273 having Coordinates of X = 1,730,450.00 and Y = 629,781.04; thence North 1,138.96 feet along the Eastern boundary of said State Lease No. 20273 to its Northeast corner having Coordinates of X = 1,730,450.00 and Y = 630,920.00; thence North 9,660.00 feet to a point having Coordinates of X = 1,730,450.00 and Y = 640,580.00; thence South 88 degrees 55 minutes 50 seconds East 10,607.03 feet to the point of beginning, (This tract includes only waterbottoms claimed and owned by the State and specifically excludes any land which the state may claim or own and to which the mineral rights are vested in the state), containing approximately **1,520.00 acres**, all as more particularly outlined on a plat on file in the Office of Mineral Resources, Department of Natural Resources. All bearings, distances and coordinates are based on Louisiana Coordinate System of 1927, (North or South Zone), where applicable.

NOTE: The above description of the Tract nominated for lease has been provided and corrected, where required, exclusively by the nomination party. Any mineral lease selected from this Tract and awarded by the Louisiana State Mineral and Energy Board shall be without warranty of any kind, either express, implied, or statutory, including, but not limited to, the implied warranties of merchantability and fitness for a particular purpose. Should the mineral lease awarded by the Louisiana State Mineral and Energy Board be subsequently modified, cancelled or abrogated due to the existence of conflicting leases, operating agreements, private claims or other future obligations or conditions which may affect all or any portion of the leased Tract, it shall not relieve the Lessee of the obligation to pay any bonus due thereon to the Louisiana State Mineral and Energy Board, nor shall the Louisiana State Mineral and Energy Board be obligated to refund any consideration paid by the Lessor prior to such modification, cancellation, or abrogation, including, but not limited to, bonuses, rentals and royalties.

NOTE: A portion of this tract is included in the Office of Conservation unit created for the Haynesville Shale - HA RA SUM; Order 287-F-6, effective date 07/14/2009, Sect. 1 T16N R10W in the Lake Bistineau Oil & Gas Field, Bienville Parish. The Weyerhaeuser 1-16-10H etal No.1 well, SN

243695 serves as the designated unit well and was completed April 25, 2012 with a well test of 5,472 mcf/d and 1,043 BWD on a 22/64 choke.

Applicant: STAFF OFFICE OF MINERAL RESOURCES

Bidder	Cash Payment	Price/Acre	Rental	Oil	Gas	Other



Legend

12090006

Active\_Leases

IMAGERY.DOQQ\_2004\_1M

WEBSTER PARISH

P.O.B.

T17N - R9W

T16N - R9W

BIENVILLE PARISH

0 3,000 Feet

T17N - R10W

LAKE BISTINEAU

SL 20273



**TRACT 42896 - Caddo and De Soto Parishes, Louisiana**

All of the lands now or formerly constituting the beds and bottoms of all water bodies of every nature and description as to which title is vested in the State of Louisiana, together with all islands arising therein and other lands formed by accretion or by reliction, where allowed by law, excepting tax adjudicated lands, and not presently under mineral lease on September 12, 2012, situated in Caddo and De Soto Parishes, Louisiana, and more particularly described as follows: Beginning at a point being the Northeast corner of State Lease No. 20356, as amended, having Coordinates of X = 1,615,184.06 and Y = 610,923.83; thence South 01 degrees 24 minutes 55 seconds West 5,431.39 feet along the Western boundary of said State Lease No. 20356 to a point being its Southwest corner having Coordinates of X = 1,615,049.92 and Y = 605,494.10, said point also being a point on the North boundary of State Lease No. 18368, as amended; thence North 88 degrees 56 minutes 59 seconds West 47.78 feet along the North boundary of said State Lease No. 18368 to a point being its Northeast corner having Coordinates of X = 1,615,002.14 and Y = 605,494.98, said point also being a point on the Eastern boundary of State Lease No. 19459; thence North 00 degrees 07 minutes 56 seconds East 5,430.48 feet along the Eastern boundary of said State Lease No. 19459 to a point having Coordinates of X = 1,615,014.68 and Y = 610,925.45; thence South 89 degrees 27 minutes 12 seconds East 169.39 feet to the point of beginning, containing approximately **14 acres**, all as more particularly outlined on a plat on file in the Office of Mineral Resources, Department of Natural Resources. All bearings, distances and coordinates are based on Louisiana Coordinate System of 1927, (North or South Zone), where applicable.

NOTE: The above description of the Tract nominated for lease has been provided and corrected, where required, exclusively by the nomination party. Any mineral lease selected from this Tract and awarded by the Louisiana State Mineral and Energy Board shall be without warranty of any kind, either express, implied, or statutory, including, but not limited to, the implied warranties of merchantability and fitness for a particular purpose. Should the mineral lease awarded by the Louisiana State Mineral and Energy Board be subsequently modified, cancelled or abrogated due to the existence of conflicting leases, operating agreements, private claims or other future obligations or conditions which may affect all or any portion of the leased Tract, it shall not relieve the Lessee of the obligation to pay any bonus due thereon to the Louisiana State Mineral and Energy Board, nor shall the Louisiana State Mineral and Energy Board be obligated to refund any consideration paid by the Lessor prior to such modification, cancellation, or abrogation, including, but not limited to, bonuses, rentals and royalties.

Applicant: STAFF OFFICE OF MINERAL RESOURCES

Bidder	Cash Payment	Price/Acre	Rental	Oil	Gas	Other



Legend

12090005

Active\_Leases

IMAGERY.DOQQ\_2004\_1M

CADDO PARISH

SL 20356

T15N - R13W

CYPRESS BAYOU

P.O.B.

WALLACE LAKE

SL 19459

DE SOTO PARISH

1,000 Feet

T16N - R14W



**TRACT 42897 - Jefferson and St. Charles Parishes, Louisiana**

All of the lands now or formerly constituting the beds and bottoms of all water bodies of every nature and description as to which title is vested in the State of Louisiana, together with all islands arising therein and other lands formed by accretion or by reliction, where allowed by law, excepting tax adjudicated lands, and not presently under mineral lease on September 12, 2012, situated in Jefferson and St. Charles Parishes, Louisiana, and more particularly described as follows: Beginning at a point having Coordinates of X = 2,353,700.00 and Y = 413,900.00; thence East 12,400.00 feet to a point having Coordinates of X = 2,366,100.00 and Y = 413,900.00; thence South 8,200.00 feet to a point having Coordinates of X = 2,366,100.00 and Y = 405,700.00; thence West 12,400.00 feet to a point having Coordinates of X = 2,353,700.00 and Y = 405,700.00; thence North 8,200.00 feet to the point of beginning, **LESS AND EXCEPT** all of State Lease No. 20707 which lies entirely within the above described tract, being more fully described as follows: Commencing at a point being the point of beginning of the above described nominated tract having Coordinates of X = 2,353,700.00 and Y = 413,900.00; thence South 01 degrees 00 minutes 11 seconds East 4,512.69 feet to a point being the point of beginning of said State Lease No. 20707 having Coordinates of X = 2,353,779.00 and Y = 409,388.00; thence North 76 degrees 56 minutes 56 seconds East 1,904.19 feet to a point having Coordinates of X = 2,355,634.00 and Y = 409,818.00; thence North 89 degrees 25 minutes 00 seconds East 1,375.07 feet to a point having Coordinates of X = 2,357,009.00 and Y = 409,832.00; thence South 80 degrees 26 minutes 17 seconds East 1,703.67 feet to a point having Coordinates of X = 2,358,689.00 and Y = 409,549.00; thence South 05 degrees 33 minutes 57 seconds West 433.04 feet to a point having Coordinates of X = 2,358,647.00 and Y = 409,118.00; thence South 36 degrees 22 minutes 11 seconds West 1,168.64 feet to a point having Coordinates of X = 2,357,954.00 and Y = 408,177.00; thence North 78 degrees 30 minutes 48 seconds West 1,842.91 feet to a point having Coordinates of X = 2,356,148.00 and Y = 408,544.00; thence South 87 degrees 56 minutes 26 seconds West 584.38 feet to a point having Coordinates of X = 2,355,564.00 and Y = 408,523.00; thence North 86 degrees 08 minutes 58 seconds West 729.65 feet to a point having Coordinates of X = 2,354,836.00 and Y = 408,572.00; thence North 52 degrees 19 minutes 55 seconds West 1,335.33 feet to the point of beginning, and **LESS AND EXCEPT** any portion of Timken Wildlife Management Area that may lie within the above described tract, containing approximately **2,173 acres**, all as more particularly outlined on a plat on file in the Office of Mineral Resources, Department of Natural Resources. All bearings, distances and coordinates are based on Louisiana Coordinate System of 1927, (North or South Zone), where applicable.

NOTE: The above description of the Tract nominated for lease has been provided and corrected, where required, exclusively by the nomination party. Any mineral lease selected from this Tract and awarded by the Louisiana State Mineral and Energy Board shall be without warranty of any kind, either express, implied, or statutory, including, but not limited

to, the implied warranties of merchantability and fitness for a particular purpose. Should the mineral lease awarded by the Louisiana State Mineral and Energy Board be subsequently modified, cancelled or abrogated due to the existence of conflicting leases, operating agreements, private claims or other future obligations or conditions which may affect all or any portion of the leased Tract, it shall not relieve the Lessee of the obligation to pay any bonus due thereon to the Louisiana State Mineral and Energy Board, nor shall the Louisiana State Mineral and Energy Board be obligated to refund any consideration paid by the Lessor prior to such modification, cancellation, or abrogation, including, but not limited to, bonuses, rentals and royalties.

NOTE: The State of Louisiana does hereby reserve, and this lease shall be subject to, the imprescriptible right of surface use in the nature of a servitude in favor of the Department of Natural Resources, including its Offices and Commissions, for the sole purpose of implementing, constructing, servicing and maintaining approved coastal zone management and/or restoration projects. Utilization of any and all rights derived under this lease by the mineral lessee, its agents, successors or assigns, shall not interfere with nor hinder the reasonable surface use by the Department of Natural Resources, its Offices or Commissions, as herein above reserved.

Applicant: BOURGEOIS ENERGY GROUP

Bidder	Cash Payment	Price/Acre	Rental	Oil	Gas	Other



Legend

1:2090007

Wildlife

Active\_Leases

Counties

IMAGERY.D00Q\_2008\_1M\_CIR

ST CHARLES PARISH

T15S - R22E

TIMKEN WMA

P.O.B.

JEFFERSON PARISH

SL 20707

LAKE SALVADOR

0 2,000 Feet

**TRACT 42898 - St. Charles Parish, Louisiana**

All of the lands now or formerly constituting the beds and bottoms of all water bodies of every nature and description as to which title is vested in the State of Louisiana, together with all islands arising therein and other lands formed by accretion or by reliction, where allowed by law, excepting tax adjudicated lands, and not presently under mineral lease on September 12, 2012, situated in St. Charles Parish, Louisiana, and more particularly described as follows: Beginning at a point having Coordinates of X = 2,357,100.00 and Y = 405,700.00; thence South 01 degrees 13 minutes 37 seconds East 7,471.71 feet to a point having Coordinates of X = 2,357,260.00 and Y = 398,230.00; thence South 00 degrees 20 minutes 44 seconds East 4,230.08 feet to a point having Coordinates of X = 2,357,285.52 and Y = 394,000.00; thence West 9,185.52 feet to a point having Coordinates of X = 2,348,100.00 and Y = 394,000.00; thence North 11,700.00 feet to a point having Coordinate of X = 2,348,100.00 and Y = 405,700.00; thence East 9,000.00 feet to the Point of Beginning, containing **2,447.85 acres**, all as more particularly outlined on a plat on file in the Office of Mineral Resources, Department of Natural Resources. All bearings, distances and coordinates are based on Louisiana Coordinate System of 1927, (North or South Zone), where applicable.

NOTE: The above description of the Tract nominated for lease has been provided and corrected, where required, exclusively by the nomination party. Any mineral lease selected from this Tract and awarded by the Louisiana State Mineral and Energy Board shall be without warranty of any kind, either express, implied, or statutory, including, but not limited to, the implied warranties of merchantability and fitness for a particular purpose. Should the mineral lease awarded by the Louisiana State Mineral and Energy Board be subsequently modified, cancelled or abrogated due to the existence of conflicting leases, operating agreements, private claims or other future obligations or conditions which may affect all or any portion of the leased Tract, it shall not relieve the Lessee of the obligation to pay any bonus due thereon to the Louisiana State Mineral and Energy Board, nor shall the Louisiana State Mineral and Energy Board be obligated to refund any consideration paid by the Lessor prior to such modification, cancellation, or abrogation, including, but not limited to, bonuses, rentals and royalties.

NOTE: The State of Louisiana does hereby reserve, and this lease shall be subject to, the imprescriptible right of surface use in the nature of a servitude in favor of the Department of Natural Resources, including its Offices and Commissions, for the sole purpose of implementing, constructing, servicing and maintaining approved coastal zone management and/or restoration projects. Utilization of any and all rights derived under this lease by the mineral lessee, its agents, successors or assigns, shall not interfere with nor hinder the reasonable surface use by the Department of Natural Resources, its Offices or Commissions, as herein above reserved.



Applicant: BOURGEOIS ENERGY GROUP

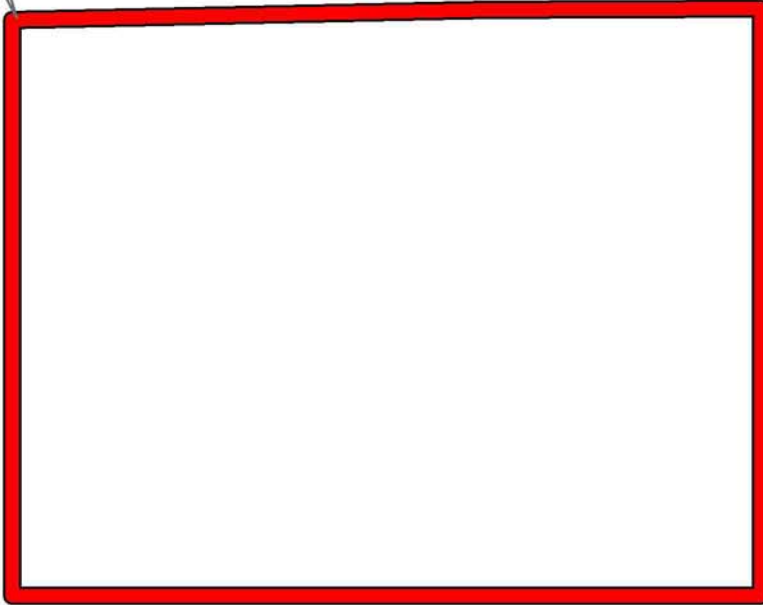
Bidder	Cash Payment	Price/Acre	Rental	Oil	Gas	Other



ST CHARLES PARISH

LAKE SALVADOR

P.O.B.



T15S - R22E



**TRACT 42899 - Jefferson and St. Charles Parishes, Louisiana**

All of the lands now or formerly constituting the beds and bottoms of all water bodies of every nature and description as to which title is vested in the State of Louisiana, together with all islands arising therein and other lands formed by accretion or by reliction, where allowed by law, excepting tax adjudicated lands, and not presently under mineral lease on September 12, 2012, situated in Jefferson and St. Charles Parishes, Louisiana, and more particularly described as follows: Beginning at a point having Coordinates of X = 2,357,100.00 and Y = 405,700.00; thence East 9,000.00 feet to a point having Coordinates of X = 2,366,100.00 and Y = 405,700.00; thence South 88 degrees 18 minutes 55 seconds East 6,802.94 feet to a point having Coordinates of X = 2,372,900.00 and Y = 405,500.00; thence South 00 degrees 48 minutes 25 seconds East 7,100.70 feet to a point having Coordinates of X = 2,373,000.00 and Y = 398,400.00; thence South 89 degrees 22 minutes 52 seconds West 15,740.92 feet to a point having Coordinates of X = 2,357,260.00 and Y = 398,230.00; thence North 01 degrees 13 minutes 37 seconds West 7,471.71 feet to the point of beginning, **LESS AND EXCEPT** all of State Lease No. 17140 which lies entirely within the above described tract, being more fully described as follows: Commencing at a point being the point of beginning of the above described nominated tract having Coordinates of X = 2,357,100.00 and Y = 405,700.00; thence South 48 degrees 24 minutes 17 seconds East 2,281.85 feet to a point being a point of beginning of said State Lease No. 17140 having Coordinates of X = 2,358,806.49 and Y = 404,185.16; thence East 1,150.00 feet to a point having Coordinates of X = 2,359,956.49 and Y = 404,185.16; thence North 690.00 feet to a point having Coordinates of X = 2,359,956.49 and Y = 404,875.16; thence East 3,019.98 feet to a point having Coordinates of X = 2,362,976.47 and Y = 404,875.16; thence South 44 degrees 00 minutes 00 seconds East 2,300.01 feet to a point having Coordinates of X = 2,364,574.19 and Y = 403,220.67; thence East 540.00 feet X = 2,365,114.19 and Y = 403,220.67; thence South 2,315.39 feet to a point having Coordinates of X = 2,365,114.19 and Y = 400,905.28; thence West 6,307.70 feet to a point having Coordinates of X = 2,358,806.49 and Y = 400,905.28; thence North 3,279.88 feet to the point of beginning, the nominated tract containing approximately **2,152.21 acres**, all as more particularly outlined on a plat on file in the Office of Mineral Resources, Department of Natural Resources. All bearings, distances and coordinates are based on Louisiana Coordinate System of 1927, (North or South Zone), where applicable.

NOTE: The above description of the Tract nominated for lease has been provided and corrected, where required, exclusively by the nomination party. Any mineral lease selected from this Tract and awarded by the Louisiana State Mineral and Energy Board shall be without warranty of any kind, either express, implied, or statutory, including, but not limited to, the implied warranties of merchantability and fitness for a particular purpose. Should the mineral lease awarded by the Louisiana State Mineral and Energy Board be subsequently modified, cancelled or abrogated due to the existence of conflicting leases, operating agreements, private claims

or other future obligations or conditions which may affect all or any portion of the leased Tract, it shall not relieve the Lessee of the obligation to pay any bonus due thereon to the Louisiana State Mineral and Energy Board, nor shall the Louisiana State Mineral and Energy Board be obligated to refund any consideration paid by the Lessor prior to such modification, cancellation, or abrogation, including, but not limited to, bonuses, rentals and royalties.

NOTE: The State of Louisiana does hereby reserve, and this lease shall be subject to, the imprescriptible right of surface use in the nature of a servitude in favor of the Department of Natural Resources, including its Offices and Commissions, for the sole purpose of implementing, constructing, servicing and maintaining approved coastal zone management and/or restoration projects. Utilization of any and all rights derived under this lease by the mineral lessee, its agents, successors or assigns, shall not interfere with nor hinder the reasonable surface use by the Department of Natural Resources, its Offices or Commissions, as herein above reserved.

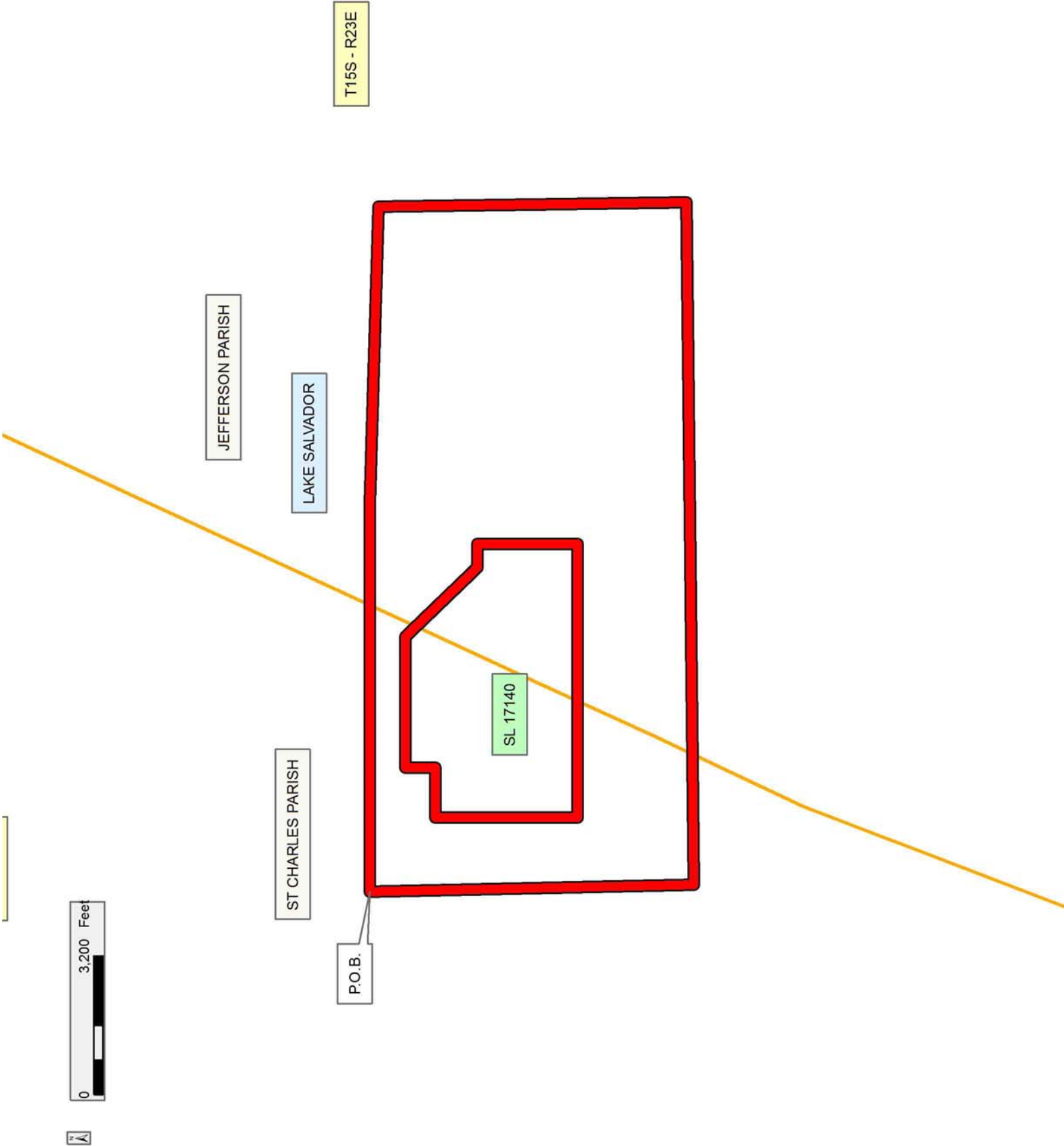
Applicant: BOURGEOIS ENERGY GROUP

Bidder	Cash Payment	Price/Acre	Rental	Oil	Gas	Other



**Legend**

- 12090008
- Active\_Leases
- Counties



**TRACT 42900 - Jefferson and St. Charles Parishes, Louisiana**

All of the lands now or formerly constituting the beds and bottoms of all water bodies of every nature and description as to which title is vested in the State of Louisiana, together with all islands arising therein and other lands formed by accretion or by reliction, where allowed by law, excepting tax adjudicated lands, and not presently under mineral lease on September 12, 2012, situated in Jefferson and St. Charles Parishes, Louisiana, and more particularly described as follows: Beginning at a point having Coordinates of X = 2,357,260.00 and Y = 398,230.00; thence North 89 degrees 22 minutes 52 seconds East 15,740.92 feet to a point having Coordinates of X = 2,373,000.00 and Y = 398,400.00; thence South 6,800.00 feet to a point having Coordinates X = 2,373,000.00 and Y = 391,600.00; thence West 15,700.00 feet to a point having Coordinates of X = 2,357,300.00 and Y = 391,600.00; thence North 00 degrees 20 minutes 44 seconds West 6,630.12 feet to the Point of Beginning, containing **2,423.36 acres**, all as more particularly outlined on a plat on file in the Office of Mineral Resources, Department of Natural Resources. All bearings, distances and coordinates are based on Louisiana Coordinate System of 1927, (North or South Zone), where applicable.

NOTE: The above description of the Tract nominated for lease has been provided and corrected, where required, exclusively by the nomination party. Any mineral lease selected from this Tract and awarded by the Louisiana State Mineral and Energy Board shall be without warranty of any kind, either express, implied, or statutory, including, but not limited to, the implied warranties of merchantability and fitness for a particular purpose. Should the mineral lease awarded by the Louisiana State Mineral and Energy Board be subsequently modified, cancelled or abrogated due to the existence of conflicting leases, operating agreements, private claims or other future obligations or conditions which may affect all or any portion of the leased Tract, it shall not relieve the Lessee of the obligation to pay any bonus due thereon to the Louisiana State Mineral and Energy Board, nor shall the Louisiana State Mineral and Energy Board be obligated to refund any consideration paid by the Lessor prior to such modification, cancellation, or abrogation, including, but not limited to, bonuses, rentals and royalties.

NOTE: The State of Louisiana does hereby reserve, and this lease shall be subject to, the imprescriptible right of surface use in the nature of a servitude in favor of the Department of Natural Resources, including its Offices and Commissions, for the sole purpose of implementing, constructing, servicing and maintaining approved coastal zone management and/or restoration projects. Utilization of any and all rights derived under this lease by the mineral lessee, its agents, successors or assigns, shall not interfere with nor hinder the reasonable surface use by the Department of Natural Resources, its Offices or Commissions, as herein above reserved.



Applicant: BOURGEOIS ENERGY GROUP

Bidder	Cash Payment	Price/Acre	Rental	Oil	Gas	Other

Legend  
12090010  
Counties

T15S - R23E

JEFFERSON PARISH

LAKE SALVADOR

P.O.B.

ST CHARLES PARISH

