

LOUISIANA ENERGY FACTS

Louisiana Department of Natural Resources
Technology Assessment Division

www.dnr.louisiana.gov/tad

INSIDE

Highlights
page 1

Louisiana Natural Gas Average Spot Prices
page 1

Current Oil & Gas Data
page 2

Louisiana Mineral Severance Tax Revenue by Source
page 3

Louisiana Mineral Royalty Revenue by Source
page 3

Quick Facts
page 4

Featured Articles and Inserts
355 11th Street
San Francisco, California



Department of Natural Resources
Scott A. Angelle, Secretary

Technology Assessment Division
Christopher P. Knotts, P.E.,
Director
Manuel Lam, Senior Analyst

617 North Third Street
Baton Rouge, LA 70802

Tel. (225) 342-1270
Fax. (225) 242-1397
Email: techasmt@la.gov
www.dnr.louisiana.gov/tad

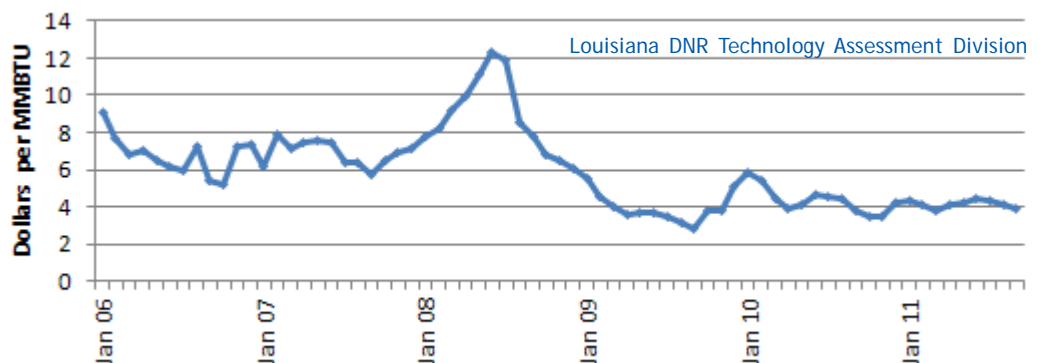
Highlights OCTOBER 2011

Light Louisiana sweet crude (St. James) traded at \$104.56 per barrel on September 30, 2011. It was 10% lower than the price of September 1, 2011. Concerns that Europe's debt crisis would trigger another global recession, combined with U.S. manufacturing barely growing and continued high unemployment, as well as the prospect of a weaker euro, caused the lower price. The end of conflict in Libya will drive the price of crude even lower if the other OPEC producers will not change their production quotas when Libya resumes crude exports. This could push the light Louisiana sweet crude price to below \$100 per barrel.

Louisiana Natural Gas Average Spot Prices

Month	(Dollars per MMBTU)						% Change	
	2006	2007	2008	2009	2010	2011	09/10	10/11
January	9.11	6.12	7.78	5.55	5.89	4.35		-26.13%
February	7.72	7.88	8.24	4.60	5.39	4.11		-23.78%
March	6.77	7.15	9.23	3.97	4.46	3.85		-13.66%
April	7.05	7.50	9.94	3.54	3.89	4.16		6.93%
May	6.46	7.59	11.14	3.65	4.09	4.24		3.63%
June	6.19	7.51	12.35	3.66	4.65	4.48		-3.76%
July	6.00	6.36	11.87	3.46	4.58	4.34		-5.11%
August	7.27	6.33	8.52	3.18	4.45	4.13		-7.11%
September	5.41	5.70	7.77	2.78	3.80	3.85		1.31%
October	5.17	6.53	6.85	3.77	3.51		-6.97%	
November	7.23	6.96	6.51	3.74	3.52		-5.98%	
December	7.33	7.11	6.08	5.09	4.22		-17.06%	
Year Average	6.81	6.89	8.86	3.92	4.37	4.17 **		

** Partial Year



Current Oil & Gas Data

Louisiana DNR Technology Assessment Division

PRODUCTION	APR 11	MAR 11	FEB 11	APR 10
LOUISIANA FEDERAL OFFSHORE (OCS)				
Crude Oil & Condensate ^C (MMB)	36 ¹	39 ¹	36 ¹	40 ¹
Natural Gas & Casinghead ^C (BCF)	114 ¹	122 ¹	111 ¹	134 ¹
THE UNITED STATES TOTAL				
Crude Oil & Condensate ^C (MMB)	167	175 ²	157	162 ²
Natural Gas & Casinghead ^C (BCF)	1,891	1,928	1,679	1,776 ²
IMPORTS				
U.S. Crude Oil ^C (MMB)	261	280	224	292
U.S. Natural Gas ^C (BCF)	280	315	309	298 ²
BAKER HUGHES RIG COUNTS				
U.S. Gas ^A	886	884	907	959
U.S. Oil ^A	896	830	801	508
U.S. Offshore ^A	28	26	26	53
U.S. Total ^A	1,790	1,720	1,718	1,479
PRICES				
CRUDE OIL (\$/barrel)				
OPEC Average ^C (F.O.B.)	115.13	106.19	96.01	78.88
U.S. Imports Average ^C (F.O.B.)	111.93	104.19	92.07	78.27
U.S. Wellhead Average ^C	108.80	99.19	86.69	78.80
Gulf OCS Wellhead Average ^C	113.66	103.24	91.47	79.06
State Severance Wellhead Average ^E	89.82	88.38	89.51	82.92
NATURAL GAS (\$/MCF)				
U.S. City Gates Average ^C	5.59	5.68	5.67	5.86 ²
U.S. Imports Average ^C (F.O.B.)	4.35	4.25	4.50	4.13
U.S. Wellhead Average ^C	3.98	3.90	4.23	3.92
State Royalty Wellhead Average	4.35	4.12	4.34	4.16 ²
NYMEX Henry Hub End of the Month Settle Gas Price ^B (\$/MMBTU)	4.37	3.79	4.32	3.84

Key

Data Sources

1	Estimated	MCF	Thousand Cubic Feet
2	Revised	MMB	Million Barrels
BCF	Billion Cubic Feet	NA	Not Available
BTU	British Thermal Unit	OCS	Outer Continental Shelf
F.O.B.	Free on Board	MMBTU	Million British Thermal Units

A	Oil & Gas Journal	D	Natural Gas Week
B	Wall Street Journal	E	LA Dept of Revenue
C	U. S. Dept. of Energy		

Note: Unless otherwise specified, data is from the Louisiana Department of Natural Resources and excludes Federal OCS.

Note from the Editors

Louisiana Energy Facts is published monthly by the Louisiana Department of Natural Resources, Technology Assessment Division as a public service to individuals interested in Louisiana energy activities. Content includes recent oil, gas and other energy statistics and a brief analysis of current trends.

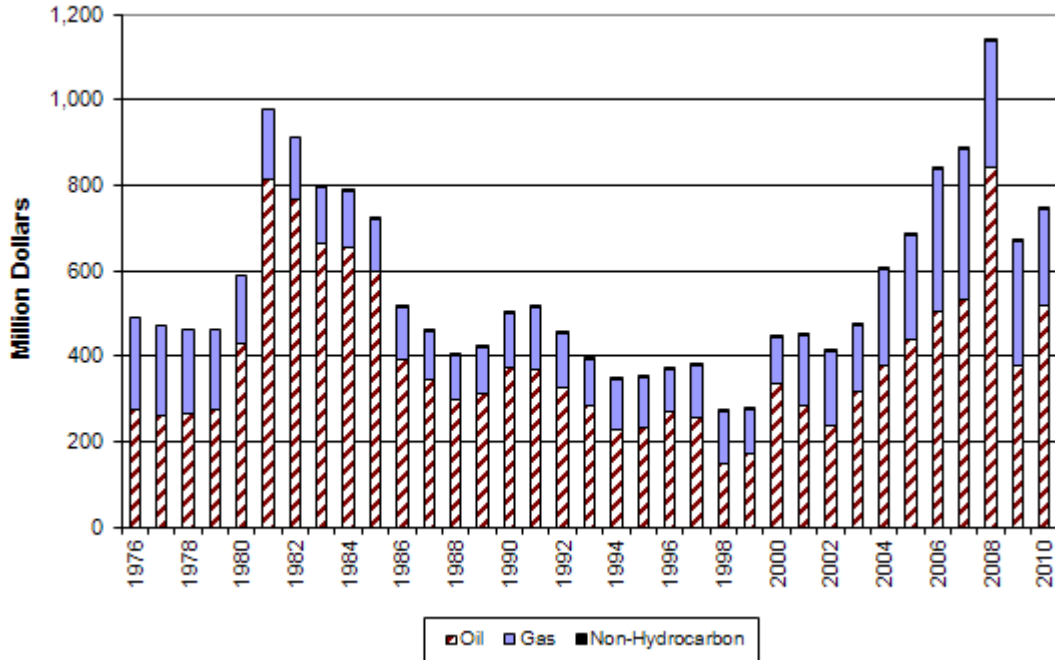
Louisiana Energy Facts articles provide insight and information on subjects of special interest to our readers, and may announce relevant, forthcoming publications.

These documents are available on the Louisiana Department of Natural Resources, Technology Assessment Division home page: <http://www.dnr.louisiana.gov/tad>. From the menu, select **Energy Data & Reports**; choose **Louisiana Energy Facts Newsletter**. Our current online holdings include issues dating from 1998 through the present. If the issue you are seeking is unavailable, please contact us.

To request a subscription or update your mailing address, contact us with your information. Please specify print or electronic subscription. **We value your feedback.** Please send your comments and suggestions for improving and enhancing the newsletter to: techasmt@la.gov.

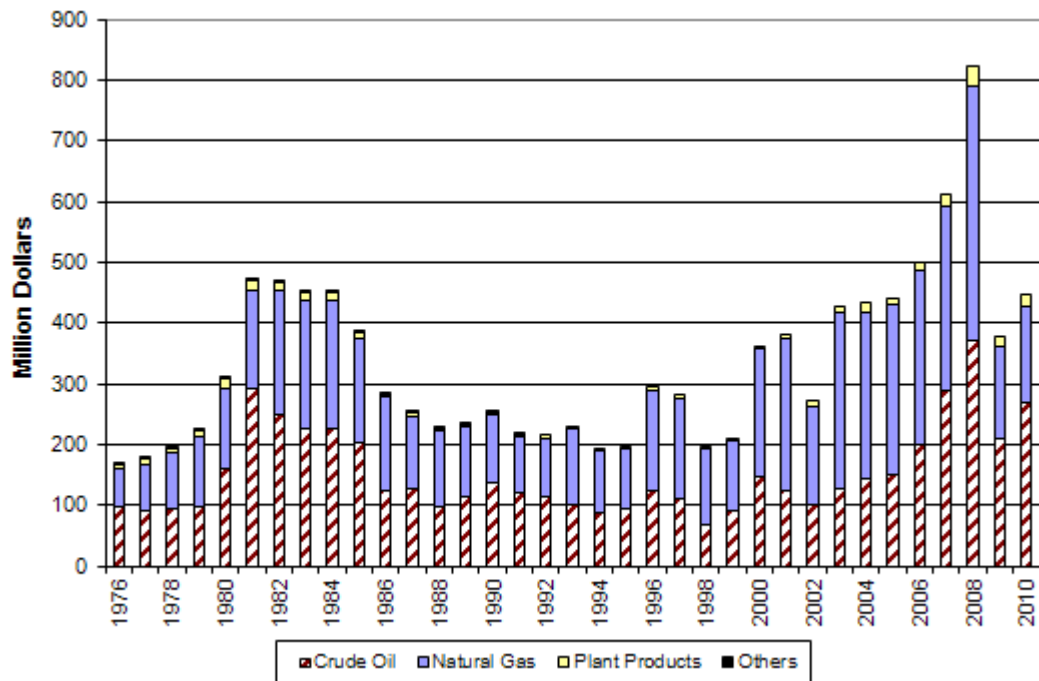
Louisiana Mineral Severance Tax Revenue By Source, Excluding Federal OCS

Louisiana DNR Technology Assessment Division



Louisiana Mineral Royalty Revenue by Source, Excluding Federal OCS

Louisiana DNR Technology Assessment Division



This issue of **Louisiana Energy Facts** is funded 100% (\$745) with Petroleum Violation Escrow funds as part of the State Energy Program as approved by the U.S. Department of Energy and Department of Natural Resources. This public document was published at a total cost of \$745. 995 copies of this public document were published in this first printing at a total cost of \$745. The total cost of all printing of this document, including reprints, is \$745. This document was published by the Department of Natural Resources, P.O. Box 94396, Baton Rouge, LA 70804-9396 to promulgate the State Energy Program developed under authority of P.L. 94-163. This material was printed in accordance with the standards for printing by State agencies established pursuant to R.S. 43.31.



LOUISIANA DEPARTMENT OF NATURAL RESOURCES
 Technology Assessment Division
 P. O. Box 94396
 Baton Rouge, LA 70804-9396

PRST STD
 U.S. POSTAGE
PAID
 BATON ROUGE, LA
 PERMIT NO. 936

ADDRESS SERVICE REQUESTED

INSIDE

Highlights
 page 1

Louisiana Natural Gas
 Average Spot Prices
 page 1

Current Oil & Gas Data
 page 2

Louisiana Mineral
 Severance Tax Revenue
 by Source
 page 3

Louisiana Mineral
 Royalty Revenue by
 Source
 page 3

Quick Facts
 page 4

Featured Articles
 and Inserts
 355 11th Street
 San Francisco, California

Quick Facts

OCTOBER 2011

Louisiana DNR Technology Assessment Division

SPOT MARKET PRICES

	Sep 11	Aug 11	Sep 10
Louisiana Natural Gas ^D (\$/MMBTU)	3.85	4.13	3.80
NYMEX Henry Hub Last Settle Gas Price ^B (\$/MMBTU)	3.86	4.37	3.65
Louisiana Sweet Crude - St. James ^B (\$/Barrel)	112.67	109.29	80.14

BAKER HUGHES RIG COUNTS

	Aug 11	Jul 11	Aug 10
North Louisiana ^A	89	93	137
South Louisiana Inland Waters ^A	18	17	12
South Louisiana Inland ^A	29	29	16
Louisiana State Offshore	2	3	2
Louisiana Federal OCS Offshore	30	30	17
Total Louisiana ^A (OCS included)	168	172	184

PRODUCTION (State Jurisdiction Only)

	Aug 11	Jul 11	Aug 10
Louisiana Crude Oil & Condensate (MMB)	5.5	5.6	5.8 ²
Louisiana Natural Gas & Casinghead (BCF)	228.9	227.6	194.3 ²

DRILLING PERMITS (State Jurisdiction Only)

	Aug 11	Jul 11	Aug 10
Total Louisiana Oil and Gas	131	128	182
Louisiana Wildcats	3	2	3
Louisiana Offshore (Wildcats included)	0	3	4