

LOUISIANA ENERGY FACTS

Louisiana Department of Natural Resources
Technology Assessment Division

www.dnr.louisiana.gov/tad

INSIDE

Highlights
page 1

**Louisiana Crude Oil and
Condensate Production**
page 1

Current Oil & Gas Data
page 2

**Louisiana Natural Gas
Production from
Incapable Oil and
Gas Wells**
page 3

**Louisiana Crude Oil
Production from
Stripper Wells**
page 3

Quick Facts
page 4

**Featured Articles
and Inserts**
[Louisiana, An Energy
Consuming State:
An Update Using 2010 Data](#)



Department of Natural Resources
Scott A. Angelle, Secretary

Technology Assessment Division
Christopher P. Knotts, P.E.,
Director
Manuel Lam, Senior Analyst

617 North Third Street
Baton Rouge, LA 70802

Tel. (225) 342-1270
Fax. (225) 242-1397
Email: techasmt@la.gov
www.dnr.louisiana.gov/tad

Highlights JULY 2012

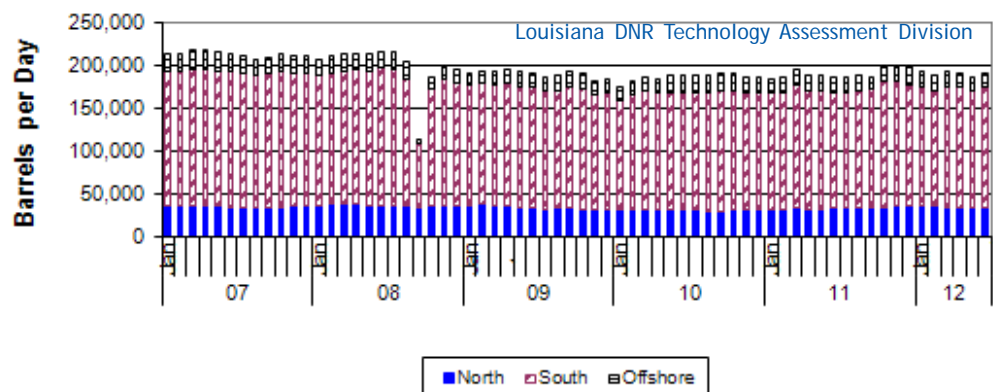
The price of Louisiana natural gas has recovered to above \$2.50 per MMBTU from its low of \$1.84 per MMBTU on April 20, 2012. The recent gas price increases were caused by the heat wave in the northern part of the U. S. and Tropical Storm Debby in the Gulf of Mexico. The hot weather and a drop in gas drilling rigs decreased the amount of natural gas going into storage. On June 29, 2012, there were 534 rigs looking for gas in the U. S. This represents a 52% drop from the first week of this year. Natural Gas Week reported that, for the week ending June 22, the year-on-year surplus was reduced 27 BCF to 653 BCF, or 27.1%, and the five year average surplus was reduced by 28 BCF to 613 BCF, or 25%.

Louisiana Crude Oil and Condensate Production**, Excluding Federal OCS

Month	(Barrels/Day)						% Change	
	2007	2008	2009	2010	2011	2012	10/11	11/12
January	211,396	206,134 ²	189,499	174,232 ²	183,714 ²	192,122		4.58%
February	211,535	209,578 ²	192,349 ²	181,673 ²	184,125 ²	187,324		1.74%
March	216,410	211,504 ²	191,284 ²	184,869 ²	193,392 ²	191,999		-0.72%
April	215,932	213,316 ²	194,640 ²	183,544 ²	187,222 ²	190,013 ¹		1.49%
May	216,029	213,238 ²	191,483 ²	186,384 ²	187,426 ²	184,691 ¹		-1.46%
June	213,197	215,074 ²	190,396 ²	186,876 ²	184,612 ²	190,838 ¹		3.37%
July	210,657	214,313 ²	185,224 ²	187,253 ²	184,366 ²		-1.54%	
August	206,806	203,565 ²	187,170 ²	187,463 ²	187,678 ²		0.11%	
September	208,868	113,178 ²	191,385 ²	190,224 ²	185,813 ²		-2.32%	
October	211,505	186,090 ²	190,420 ²	188,641 ²	198,418 ²		5.18%	
November	210,975	199,011 ²	180,730 ²	185,969 ²	199,560 ²		7.31%	
December	211,340	194,415 ²	183,397 ²	185,925 ²	197,759 ²		6.36%	
Year Average	212,054	198,285 ²	188,998 ²	185,255 ²	189,507 ²	189,498 [*]		

^{*} Partial Year

^{**}All data are revised; see July 2001 statistic changes explanation



Current Oil & Gas Data

Louisiana DNR Technology Assessment Division

PRODUCTION	JAN 12	DEC 11	NOV 11	JAN 11
LOUISIANA FEDERAL OFFSHORE (OCS)				
Crude Oil & Condensate ^C (MMB)	35 ¹	34 ¹	34 ¹	44 ¹
Natural Gas & Casinghead ^C (BCF)	101 ¹	102 ¹	100 ¹	131 ¹
THE UNITED STATES TOTAL				
Crude Oil & Condensate ^C (MMB)	190	187 ²	179	171 ²
Natural Gas & Casinghead ^C (BCF)	2,037	2,031	1,971	1,880 ²
IMPORTS				
U.S. Crude Oil ^C (MMB)	267	270	265	281
U.S. Natural Gas ^C (BCF)	281	295	247 ²	371 ²
BAKER HUGHES RIG COUNTS				
U.S. Gas ^A	790	812	880	909
U.S. Oil ^A	1,208	1,188	1,125	793
U.S. Offshore ^A	43	42	37	26
U.S. Total ^A	2,003	2,005	2,011	1,711
PRICES				
CRUDE OIL (\$/barrel)				
OPEC Average ^C (F.O.B.)	107.37	106.41	108.16	89.74
U.S. Imports Average ^C (F.O.B.)	104.18	103.36	105.79	86.80
U.S. Wellhead Average ^C	98.99	98.71	100.18	85.66
Gulf OCS Wellhead Average ^C	106.09	110.54	111.53	89.04
State Severance Wellhead Average ^E	117.12	102.77	104.41	83.01
NATURAL GAS (\$/MCF)				
U.S. City Gates Average ^C	4.86	5.03	5.25	5.68 ²
U.S. Imports Average ^C (F.O.B.)	3.26	3.66	3.59 ²	4.66 ²
U.S. Wellhead Average ^C	2.89	3.14	3.35 ²	4.37 ²
State Royalty Wellhead Average	3.03	3.44 ²	3.46 ²	4.67 ²
NYMEX Henry Hub End of the Month Settle Gas Price ^B (\$/MMBTU)	3.08	3.36	3.52	4.22

Key

Data Sources

1	Estimated	MCF	Thousand Cubic Feet	A	Oil & Gas Journal	D	Natural Gas Week
2	Revised	MMB	Million Barrels	B	Wall Street Journal	E	LA Dept of Revenue
BCF	Billion Cubic Feet	NA	Not Available	C	U. S. Dept. of Energy		
BTU	British Thermal Unit	OCS	Outer Continental Shelf	Note: Unless otherwise specified, data is from the Louisiana Department of Natural Resources and excludes Federal OCS.			
FO.B.	Free on Board	MMBTU	Million British Thermal Units				

Note from the Editors

Louisiana Energy Facts is published monthly by the Louisiana Department of Natural Resources, Technology Assessment Division as a public service to individuals interested in Louisiana energy activities. Content includes recent oil, gas and other energy statistics and a brief analysis of current trends.

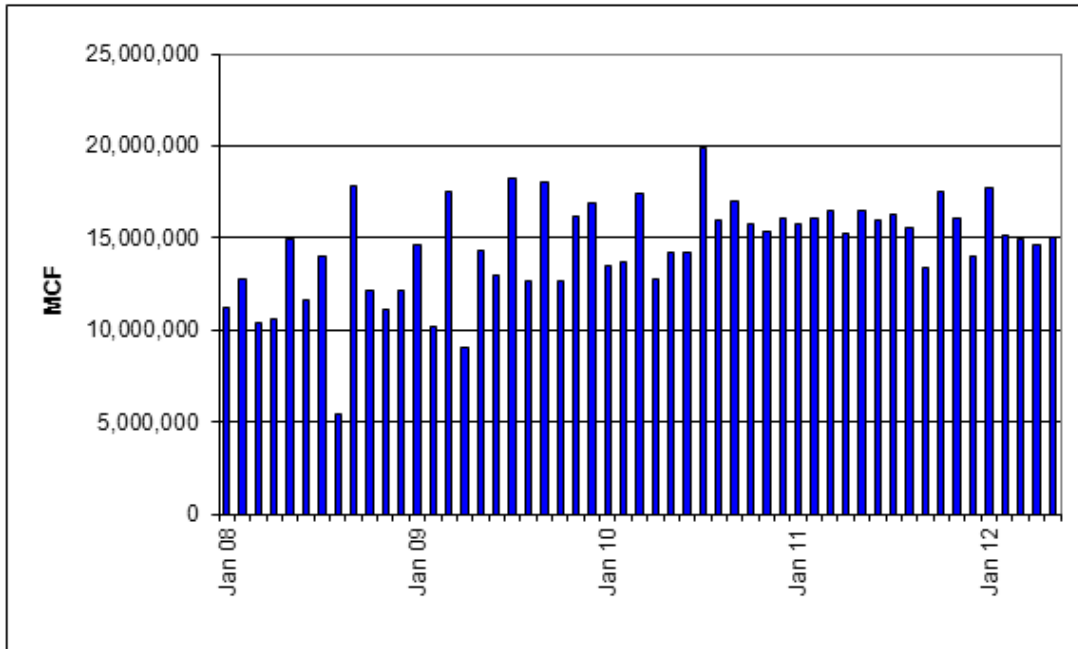
Louisiana Energy Facts articles provide insight and information on subjects of special interest to our readers, and may announce relevant, forthcoming publications.

These documents are available on the Louisiana Department of Natural Resources, Technology Assessment Division home page: <http://www.dnr.louisiana.gov/tad>. From the menu, select **Newsletters**. Our current online holdings include issues dating from 1998 through the present. If the issue you are seeking is unavailable, please contact us.

To request a subscription or update your mailing address, contact us with your information. Please specify print or electronic subscription. **We value your feedback.** Please send your comments and suggestions for improving and enhancing the newsletter to: techasmt@la.gov.

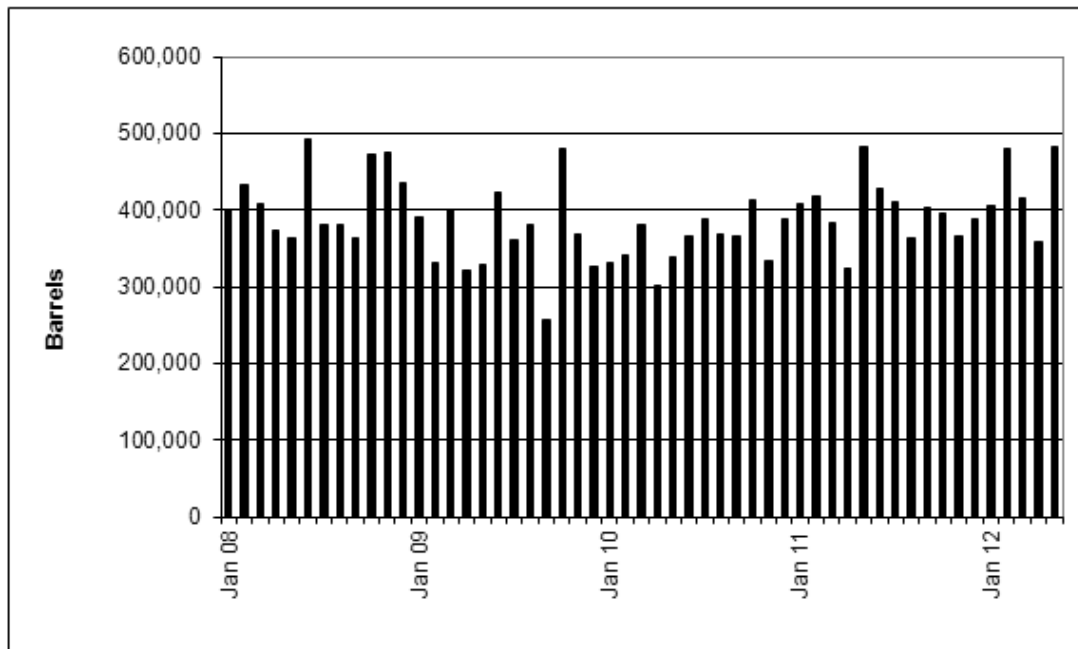
Louisiana Natural Gas from Incapable Oil and Gas Wells^E

Louisiana DNR Technology Assessment Division



Louisiana Crude Oil Production from Stripper Wells^E

Louisiana DNR Technology Assessment Division



This issue of **Louisiana Energy Facts** is funded 100% (\$745) with Petroleum Violation Escrow funds as part of the State Energy Program as approved by the U.S. Department of Energy and Department of Natural Resources. This public document was published at a total cost of \$745. 995 copies of this public document were published in this first printing at a total cost of \$745. The total cost of all printing of this document, including reprints, is \$745. This document was published by the Department of Natural Resources, P.O. Box 94396, Baton Rouge, LA 70804-9396 to promulgate the State Energy Program developed under authority of P.L. 94-163. This material was printed in accordance with the standards for printing by State agencies established pursuant to R.S. 43.31.



LOUISIANA DEPARTMENT OF NATURAL RESOURCES
 Technology Assessment Division
 P. O. Box 94396
 Baton Rouge, LA 70804-9396

PRST STD
 U.S. POSTAGE
PAID
 BATON ROUGE, LA
 PERMIT NO. 936

ADDRESS SERVICE REQUESTED

INSIDE

Highlights
page 1

**Louisiana Crude Oil and
Condensate Production**
page 1

Current Oil & Gas Data
page 2

**Louisiana Natural Gas
Production from
Incapable Oil and
Gas Wells**
page 3

**Louisiana Crude Oil
Production from
Stripper Wells**
page 3

Quick Facts
page 4

**Featured Articles
and Inserts**
[Louisiana, An Energy
Consuming State:
An Update Using 2010 Data](#)

Quick Facts

JULY 2012

Louisiana DNR Technology Assessment Division

SPOT MARKET PRICES	Jun 12	May 12	Jun 11
Louisiana Natural Gas ^D (\$/MMBTU)	2.64	2.30	4.48
NYMEX Henry Hub Last Settle Gas Price ^B (\$/MMBTU)	2.43	2.04	4.33
Louisiana Sweet Crude - St. James ^B (\$/Barrel)	94.90	106.70 ²	113.24
BAKER HUGHES RIG COUNTS	May 12	Apr 12	May 11
North Louisiana ^A	38	42	106
South Louisiana Inland Waters ^A	20	21	16
South Louisiana Inland ^A	27	27	17
Louisiana State Offshore	0	1	2
Louisiana Federal OCS Offshore	43	39	29
Total Louisiana ^A (OCS included)	128	130	170
PRODUCTION (State Jurisdiction Only)	May 12	Apr 12	May 11
Louisiana Crude Oil & Condensate (MMB)	5.7 ¹	5.7 ¹	5.8
Louisiana Natural Gas & Casinghead (BCF)	248.1 ¹	247.2 ¹	257.9 ¹
DRILLING PERMITS (State Jurisdiction Only)	May 12	Apr 12	May 11
Total Louisiana Oil and Gas	152	147	159
Louisiana Wildcats	5	1	8
Louisiana Offshore (Wildcats included)	3	2	3