

LOUISIANA ENERGY FACTS

Louisiana Department of Natural Resources
Technology Assessment Division

www.dnr.louisiana.gov/tad

INSIDE

Highlights
page 1

Louisiana Monthly Crude Oil & Condensate Production
page 1

Current Oil & Gas Data
page 2

Louisiana Natural Gas Production from Incapable Oil and Gas Wells
page 3

Louisiana Crude Oil Production from Stripper Wells
page 3

Quick Facts
page 4

Featured Articles and Inserts
[Louisiana, An Energy Consuming State: An Update Using 2011 Data](#)



Department of Natural Resources
Stephen Chustz, Secretary

Technology Assessment Division
William J. Delmar, Jr., P.E.
Assistant Director
Manuel Lam, Senior Analyst

617 North Third Street
Baton Rouge, LA 70802

Tel. (225) 342-1270
Fax. (225) 242-1397
Email: techasmt@la.gov
www.dnr.louisiana.gov/tad

Highlights

JULY 2013

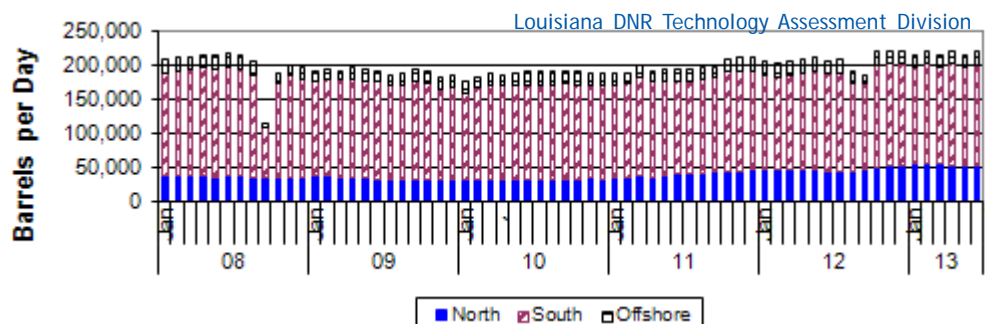
On July 2, 2013, the West Texas Intermediate Crude futures price surpassed \$100 per barrel for the first time since May 3, 2012. It reached as high as \$102.18 per barrel. The rising price is caused by concerns that political unrest in Egypt may disrupt the Middle Eastern supply and by shrinking U.S. stockpiles. Bloomberg said the American Petroleum Institute (API) reported in the week ended June 28 that U.S. gasoline stockpiles declined 183,000 barrels. The latest Energy Information Administration (EIA) reports said crude inventory fell 10.3 million barrels to 383.8 million barrels, while U.S. crude production rose 6,000 barrels a day to 7.27 million barrels. The production surge is due to a combination of horizontal drilling and hydraulic fracturing (commonly known as fracking) that unlocked supplies trapped in shale formations in the central part of the country.

Louisiana Monthly Crude Oil & Condensate Production**, Excluding Federal OCS

Month	(Barrels/Day)						% Change	
	2008	2009	2010	2011	2012	2013	11/12	12/13
January	206,114	189,456	174,169 ²	187,103 ²	203,748 ²	214,261		5.16%
February	209,564	192,347	181,635 ²	188,168 ²	200,472 ²	217,886		8.69%
March	211,493	191,269	185,470 ²	198,222 ²	204,194 ²	213,868		4.74%
April	213,326	194,654	185,250 ²	191,249 ²	206,316 ²	219,342 ¹		6.31%
May	213,230	191,486	187,993 ²	193,191 ²	209,165 ²	212,177 ¹		1.44%
June	215,080	190,416	188,537 ²	193,272 ²	204,044 ²	217,963 ¹		6.82%
July	214,293	185,216	188,949 ²	193,384 ²	208,066 ²		7.59%	
August	203,559	187,161	188,549 ²	196,517 ²	188,635 ²		-4.01%	
September	113,171	191,385	191,235 ²	195,078 ²	183,800 ²		-5.78%	
October	186,093	190,377	190,151 ²	208,132 ²	218,127 ²		4.80%	
November	198,994	180,751	187,817 ²	209,251 ²	219,626 ²		4.96%	
December	194,408	183,418	187,933 ²	209,718 ²	218,537 ²		4.21%	
Year Average	198,277	188,995	186,474 ²	196,940 ²	205,394 ²	215,916 [*]		

* Partial Year

**All data are revised; see July 2001 statistic changes explanation



Current Oil & Gas Data

Louisiana DNR Technology Assessment Division

PRODUCTION	JAN 13	DEC 12	NOV 12	JAN 12
LOUISIANA FEDERAL OFFSHORE (OCS)				
Crude Oil & Condensate ^C (MMB)	36 ¹	37 ¹	36 ¹	35 ¹
Natural Gas & Casinghead ^C (BCF)	86 ¹	93 ¹	92 ¹	103 ¹
THE UNITED STATES TOTAL				
Crude Oil & Condensate ^C (MMB)	219	220 ²	212 ²	191 ²
Natural Gas & Casinghead ^C (BCF)	2,032	2,041	1,999 ²	2,044 ²
IMPORTS				
U.S. Crude Oil ^C (MMB)	247	235	244	266
U.S. Natural Gas ^C (BCF)	276	251	233	281
BAKER HUGHES RIG COUNTS				
U.S. Gas ^A	434	423	421	790
U.S. Oil ^A	1,318	1,358	1,385	1,208
U.S. Offshore ^A	52	50	51	43
U.S. Total ^A	1,756	1,784	1,809	2,003
PRICES				
CRUDE OIL (\$/barrel)				
OPEC Average ^C (F.O.B.)	102.42	98.04 ²	95.94	107.51
U.S. Imports Average ^C (F.O.B.)	95.23	92.64 ²	91.86 ²	103.96
U.S. Wellhead Average ^C	94.89	89.81 ²	89.64 ²	98.99
Gulf OCS Wellhead Average ^C	107.02	103.03	102.72	106.09
State Severance Wellhead Average ^E	102.89	109.51	101.77	117.12
NATURAL GAS (\$/MCF)				
U.S. City Gates Average ^C	4.52	4.79	4.79	4.85 ²
U.S. Imports Average ^C (F.O.B.)	4.09	3.93 ²	4.03 ²	3.26 ²
U.S. Wellhead Average ^C	N/A	3.35	3.35	2.89
State Royalty Wellhead Average	3.23	3.48	3.51	3.00 ²
NYMEX Henry Hub End of the Month Settle Gas Price ^B (\$/MMBTU)	3.35	3.70	3.47	3.08

Key		Data Sources					
1	Estimated	MCF	Thousand Cubic Feet	A	Oil & Gas Journal	D	Natural Gas Week
2	Revised	MMB	Million Barrels	B	Wall Street Journal	E	LA Dept of Revenue
BCF	Billion Cubic Feet	N/A	Not Available	C	U. S. Dept. of Energy		
BTU	British Thermal Unit	OCS	Outer Continental Shelf				
FO.B.	Free on Board	MMBTU	Million British Thermal Units				
				Note: Unless otherwise specified, data is from the Louisiana Department of Natural Resources and excludes Federal OCS.			

Note from the Editors

Louisiana Energy Facts is published monthly by the Louisiana Department of Natural Resources, Technology Assessment Division as a public service to individuals interested in Louisiana energy activities. Content includes recent oil, gas and other energy statistics and a brief analysis of current trends.

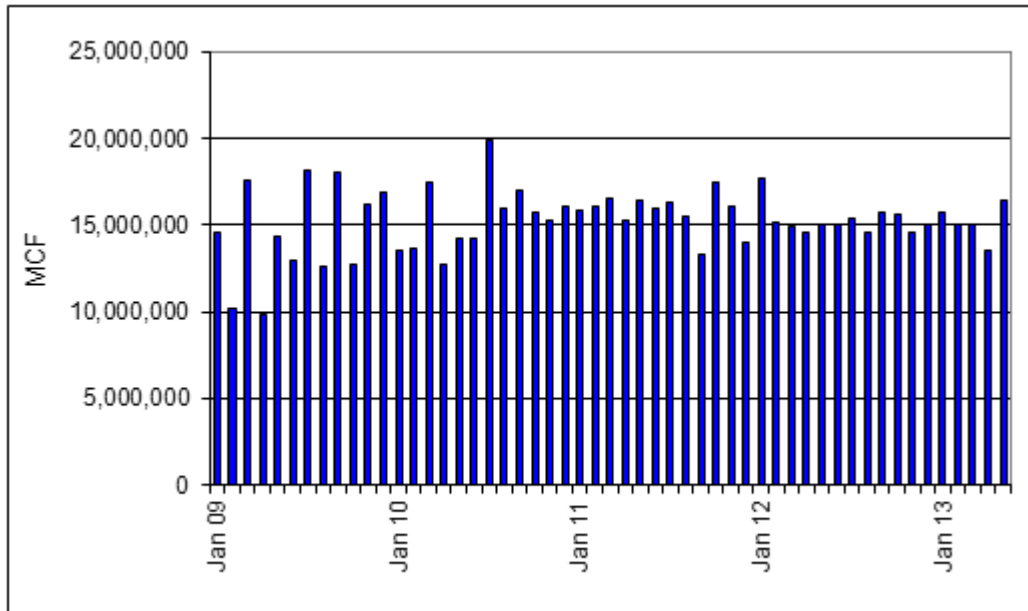
Louisiana Energy Facts articles provide insight and information on subjects of special interest to our readers, and may announce relevant, forthcoming publications.

These documents are available on the Louisiana Department of Natural Resources, Technology Assessment Division home page: <http://www.dnr.louisiana.gov/tad>. From the menu, select **Newsletters**. Our current online holdings include issues dating from 1998 through the present. If the issue you are seeking is unavailable, please contact us.

To request a subscription or update your mailing address, contact us with your information. Please specify print or electronic subscription. **We value your feedback.** Please send your comments and suggestions for improving and enhancing the newsletter to: techasmt@la.gov.

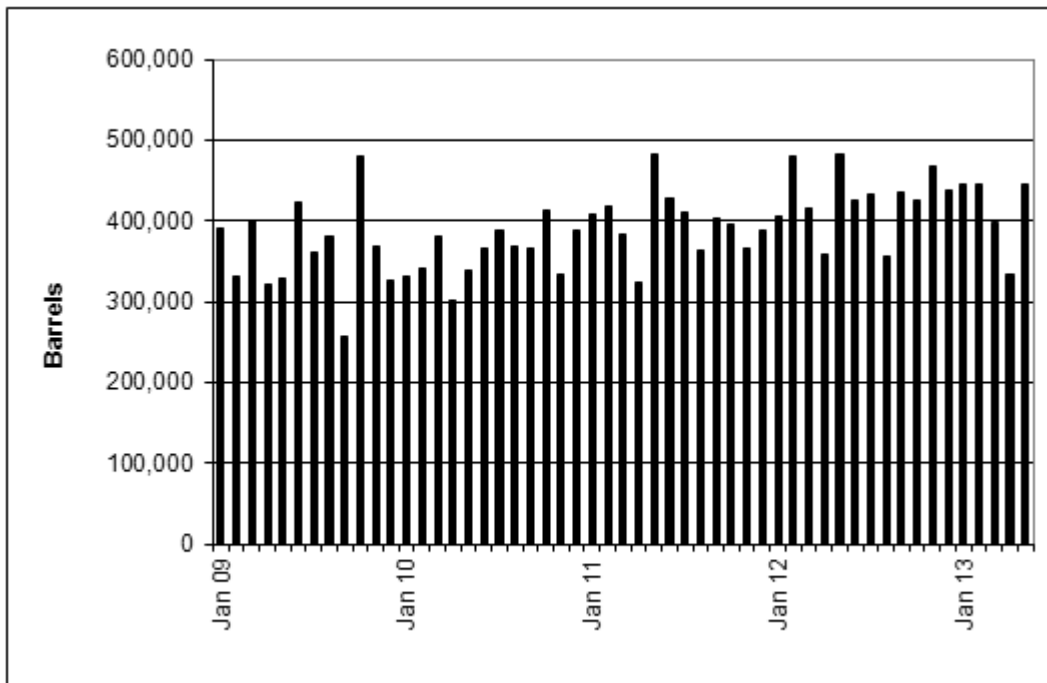
Louisiana Natural Gas from Incapable Oil and Gas Wells^E

Louisiana DNR Technology Assessment Division



Louisiana Crude Oil Production from Stripper Wells^E

Louisiana DNR Technology Assessment Division



This issue of **Louisiana Energy Facts** is funded 100% (\$835) with Petroleum Violation Escrow funds as part of the State Energy Program as approved by the U.S. Department of Energy and Department of Natural Resources. This public document was published at a total cost of \$835. 970 copies of this public document were published in this first printing at a total cost of \$835. The total cost of all printing of this document, including reprints, is \$835. This document was published by the Department of Natural Resources, P.O. Box 94396, Baton Rouge, LA 70804-9396 to promulgate the State Energy Program developed under authority of P.L. 94-163. This material was printed in accordance with the standards for printing by State agencies established pursuant to R.S. 43.31.



LOUISIANA DEPARTMENT OF NATURAL RESOURCES
 Technology Assessment Division
 P. O. Box 94396
 Baton Rouge, LA 70804-9396

PRST STD
 U.S. POSTAGE
PAID
 BATON ROUGE, LA
 PERMIT NO. 936

ADDRESS SERVICE REQUESTED

INSIDE

Highlights
page 1

**Louisiana Monthly
Crude Oil &
Condensate Production**
page 1

Current Oil & Gas Data
page 2

**Louisiana Natural Gas
Production from
Incapable Oil and
Gas Wells**
page 3

**Louisiana Crude Oil
Production from
Stripper Wells**
page 3

Quick Facts
page 4

**Featured Articles
and Inserts**
Louisiana, An Energy
Consuming State:
An Update Using 2011 Data

Quick Facts

JULY 2013

Louisiana DNR Technology Assessment Division

SPOT MARKET PRICES

	Jun 13	May 13	Jun 12
Louisiana Natural Gas ^D (\$/MMBTU)	3.89	4.02	2.34 ²
NYMEX Henry Hub Last Settle Gas Price ^B (\$/MMBTU)	4.15	4.15	2.43
Louisiana Sweet Crude - St. James ^B (\$/Barrel)	104.19	104.27	94.90

BAKER HUGHES RIG COUNTS

	May 13	Apr 13	May 12
North Louisiana ^A	22	23	38
South Louisiana Inland Waters ^A	23	24	20
South Louisiana Inland ^A	19	16	27
Louisiana State Offshore	1	2	0
Louisiana Federal OCS Offshore	43	43	43
Total Louisiana ^A (OCS included)	107	108	128

PRODUCTION (State Jurisdiction Only)

	May 13	Apr 13	May 12
Louisiana Crude Oil & Condensate (MMB)	6.6 ¹	6.6 ¹	6.5 ¹
Louisiana Natural Gas & Casinghead (BCF)	222.8 ¹	222.2 ¹	250.9 ¹

DRILLING PERMITS (State Jurisdiction Only)

	May 13	Apr 13	May 12
Total Louisiana Oil and Gas	127	174	152
Louisiana Wildcats	4	1	5
Louisiana Offshore (Wildcats included)	1	4	3