

LOUISIANA ENERGY FACTS

Louisiana Department of Natural Resources
Technology Assessment Division

www.dnr.louisiana.gov/tad

INSIDE

Highlights
page 1

**Louisiana Monthly
Crude Oil & Condensate
Production**
page 1

Current Oil & Gas Data
page 2

**Louisiana Crude Oil and
Condensate Production**
page 3

**Louisiana Natural Gas and
Casinghead Gas Production**
page 3

Quick Facts
page 4

**Featured Articles
and Inserts**
Louisiana Gas Shales and
Economic Impacts



Department of Natural Resources
Stephen Chustz, Secretary

Technology Assessment Division
William J. Delmar, Jr., P.E.
Assistant Director
Manuel Lam, Senior Analyst

617 North Third Street
Baton Rouge, LA 70802

Tel. (225) 342-1270
Fax. (225) 242-1397
Email: techasmt@la.gov
www.dnr.louisiana.gov/tad

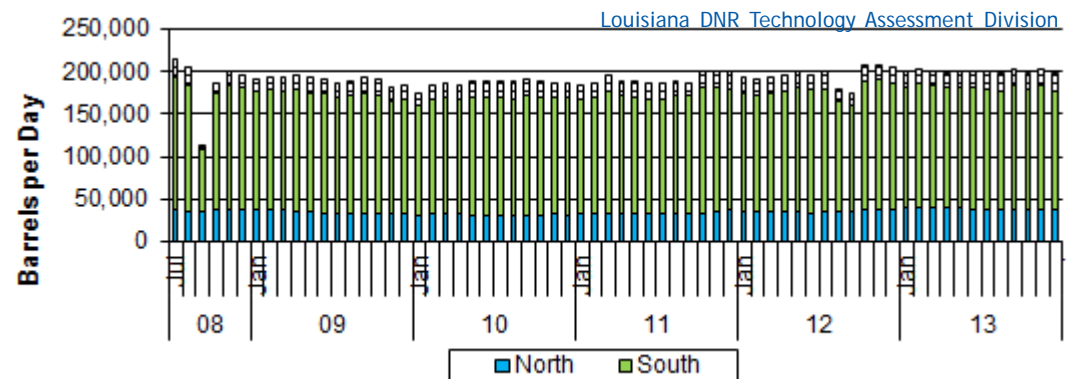
Highlights JANUARY 2014

The natural gas spot price has been above \$4 per MMBTU since December 6, 2013. On Friday, December 27, 2013, the Henry Hub natural gas price was \$4.30 per MMBTU, which was 90 cents more than the price on December 28, 2012. The price increase was caused by blasts of arctic air, which stokes heating demand and larger than normal drawdown of natural gas stockpiles. The U.S. Energy Information Administration (EIA) reported that natural gas working inventories for the week ending January 3, 2014 totaled 2.82 trillion cubic feet (TCF). The week's storage levels were 15.8% below last year's levels and 10.1% below the 5-year average (2009-2013). EIA expects that the Henry Hub natural gas spot price will average \$3.89/MMBTU in 2014 and \$4.11/MMBTU in 2015.

Louisiana Monthly Crude Oil & Condensate Production**, Excluding Federal OCS

Month	(Barrels/Day)						% Change 12/13
	2008	2009	2010	2011	2012	2013	
January	206,115 ²	189,424 ²	174,157 ²	183,684 ²	193,205 ²	199,189 ²	3.10%
February	209,555 ²	192,445 ²	181,653 ²	184,199 ²	190,188 ²	202,558 ²	6.50%
March	211,504 ²	191,198 ²	184,735 ²	193,619 ²	192,940 ²	199,865 ²	3.59%
April	213,330 ²	194,657 ²	183,469 ²	187,447 ²	195,013 ²	197,551 ²	1.30%
May	213,234 ²	191,322 ²	186,380 ²	187,796 ²	198,184 ²	200,136 ²	0.98%
June	215,080 ²	190,448 ²	186,855 ²	184,936 ²	194,842 ²	200,033 ²	2.66%
July	214,292 ²	185,205 ²	187,218 ²	184,634 ²	198,226 ²	198,744	0.26%
August	203,563 ²	187,272 ²	187,233 ²	187,903 ²	179,118 ²	197,918	10.50%
September	113,177 ²	191,417 ²	190,210 ²	185,877 ²	173,030 ²	202,184 ¹	16.85%
October	186,102 ²	190,377	188,640 ²	198,666 ²	206,231 ²	196,556 ¹	-4.69%
November	198,997 ²	180,818 ²	185,830 ²	199,828 ²	206,014 ²	202,372 ¹	-1.77%
December	194,415 ²	183,418	185,862 ²	198,949 ²	203,559 ²	196,296 ¹	-3.57%
Year Average	198,280²	189,000²	185,187²	189,795²	194,213²	199,450¹	2.70%

**All data are revised; see July 2001 statistic changes explanation



Current Oil & Gas Data

Louisiana DNR Technology Assessment Division

PRODUCTION	JUL 13	JUN 13	MAY 13	JUL 12
LOUISIANA FEDERAL OFFSHORE (OCS)				
Crude Oil & Condensate ^C (MMB)	33 ¹	28 ¹	32 ¹	35 ¹
Natural Gas & Casinghead ^C (BCF)	81 ¹	75 ¹	84 ¹	97 ¹
THE UNITED STATES TOTAL				
Crude Oil & Condensate ^C (MMB)	233	217	226	198 ²
Natural Gas & Casinghead ^C (BCF)	2,080	2,000	2,062	2,039 ²
IMPORTS				
U.S. Crude Oil ^C (MMB)	250	232	240	270 ²
U.S. Natural Gas ^C (BCF)	237	237	235	281
BAKER HUGHES RIG COUNTS				
U.S. Gas ^A	364	352	353	522
U.S. Oil ^A	1,396	1,404	1,407	1,419
U.S. Offshore ^A	58	55	52	51
U.S. Total ^A	1,766	1,761	1,767	1,944
PRICES				
CRUDE OIL (\$/barrel)				
OPEC Average ^C (F.O.B.)	102.38	98.45	98.72	96.30
U.S. Imports Average ^C (F.O.B.)	101.46	96.22	96.20	92.50
U.S. Wellhead Average ^C	101.61	94.05	95.00	86.10
Gulf OCS Wellhead Average ^C	104.50	101.45	103.51	93.59
State Severance Wellhead Average ^E	103.11	103.20	110.61	108.84
NATURAL GAS (\$/MCF)				
U.S. City Gates Average ^C	5.56	5.74 ²	5.54 ²	4.88 ²
U.S. Imports Average ^C (F.O.B.)	3.41	3.90	3.95	2.78 ²
U.S. Spot Market Average ^D	3.81	4.07	4.19	2.59
State Royalty Wellhead Average	3.67	4.00	4.13	2.93 ²
NYMEX Henry Hub End of the Month Settle Gas Price ^B (\$/MMBTU)	3.71	4.15	4.15	2.77

Key

Data Sources

1	Estimated	MCF	Thousand Cubic Feet	A	Oil & Gas Journal	D	Natural Gas Week
2	Revised	MMB	Million Barrels	B	Wall Street Journal	E	LA Dept of Revenue
BCF	Billion Cubic Feet	NA	Not Available	C	U. S. Dept. of Energy		
BTU	British Thermal Unit	OCS	Outer Continental Shelf				
FO.B.	Free on Board	MMBTU	Million British Thermal Units				
				Note: Unless otherwise specified, data is from the Louisiana Department of Natural Resources and excludes Federal OCS.			

Note from the Editors

Louisiana Energy Facts is published monthly by the Louisiana Department of Natural Resources, Technology Assessment Division as a public service to individuals interested in Louisiana energy activities. Content includes recent oil, gas and other energy statistics and a brief analysis of current trends.

Louisiana Energy Facts articles provide insight and information on subjects of special interest to our readers, and may announce relevant, forthcoming publications.

These documents are available on the Louisiana Department of Natural Resources, Technology Assessment Division home page: <http://www.dnr.louisiana.gov/tad>. From the menu, select **Newsletters**. Our current online holdings include issues dating from 1998 through the present. If the issue you are seeking is unavailable, please contact us.

To request a subscription or update your mailing address, contact us with your information. Please specify print or electronic subscription. **We value your feedback.** Please send your comments and suggestions for improving and enhancing the newsletter to: techasmt@la.gov.

Louisiana Crude Oil and Condensate Production

Excluding Federal OCS

Louisiana DNR Technology Assessment Division

YEAR	(Barrels)			TOTAL
	NORTH	SOUTH	OFFSHORE	
1994	21,324,702 ²	90,907,553 ²	14,892,953 ²	127,125,208 ²
1995	20,595,093 ²	87,613,455 ²	17,016,027 ²	125,224,575 ²
1996	22,078,179 ²	89,743,267 ²	17,137,665 ²	128,959,111 ²
1997	21,829,276 ²	88,295,426 ²	16,030,812 ²	126,155,514 ²
1998	20,304,949 ²	87,523,706 ²	14,312,144 ²	122,140,799 ²
1999	16,711,501 ²	81,260,610 ²	12,850,588 ²	110,822,699 ²
2000	15,307,562 ²	80,304,828 ²	11,549,975 ²	107,162,365 ²
2001	14,274,475 ²	79,328,486	11,264,058	104,867,019
2002	12,726,261 ²	71,523,765	9,440,089	93,690,115
2003	12,049,211 ²	67,975,624	10,349,488	90,374,323
2004	11,696,648 ²	63,270,406	8,725,050	83,692,104
2005	11,909,370 ²	56,993,657	6,782,960	75,685,987
2006	12,100,880 ²	55,151,918	6,717,319	73,994,371 ²
2007	12,427,647 ²	57,353,465	7,595,386	77,353,174 ²
2008	13,104,615 ²	53,213,907 ²	6,282,040	72,600,562 ²
2009	12,091,525 ²	50,891,696 ²	5,990,170	68,973,391 ²
2010	11,013,534 ²	50,002,855 ²	6,581,828 ²	67,598,217 ²
2011	11,864,321 ²	50,912,585 ²	6,516,116 ²	69,293,022 ²
2012	12,759,277 ²	51,752,937 ²	6,595,500 ²	71,107,714 ²
2013	13,528,420 ¹	51,786,696 ¹	6,909,873 ¹	72,224,988 ¹

Louisiana Natural Gas and Casinghead Gas Production

Excluding Federal OCS

Louisiana DNR Technology Assessment Division

YEAR	(MCF)			TOTAL
	NORTH	SOUTH	OFFSHORE	
1994	354,864,587	1,068,937,383	128,395,752	1,552,197,722
1995	367,215,091	1,046,891,492	136,506,278	1,550,612,861
1996	415,280,446	1,064,407,257	159,500,151	1,639,187,854
1997	441,844,087	1,008,319,013	160,956,517	1,611,119,617
1998	429,257,932	1,008,712,261	144,320,869	1,582,291,062
1999	385,479,720	957,381,530	115,829,899	1,458,691,149
2000	381,407,678	978,585,376	107,546,713	1,467,539,767
2001	390,842,072	993,269,323	111,210,322	1,495,321,717
2002	387,069,536	876,556,069	98,236,172	1,361,861,777
2003	416,488,328	844,709,436	83,413,309	1,344,611,073
2004	475,425,191	806,165,872	68,134,157	1,349,725,220
2005	537,869,897	693,599,008	53,486,449	1,284,955,354
2006	571,821,698	710,814,721	67,273,962	1,349,910,381
2007	611,476,442	672,290,544	71,412,494	1,355,179,480
2008	684,050,870 ²	591,428,816 ²	83,936,258	1,359,458,821 ²
2009	960,954,160 ²	492,259,100 ²	74,862,729 ²	1,528,075,810 ²
2010	1,696,278,744 ²	410,711,015 ²	68,359,754 ²	2,175,349,513 ²
2011	2,514,361,529 ²	397,585,982 ²	69,852,920 ²	2,981,800,431 ²
2012	2,513,040,076 ²	375,990,446 ²	76,799,489 ²	2,965,830,011 ²
2013	1,846,797,919 ¹	393,518,947 ¹	64,980,600 ¹	2,305,297,466 ¹

This issue of *Louisiana Energy Facts* is funded 100% (\$835) with Petroleum Violation Escrow funds as part of the State Energy Program as approved by the U.S. Department of Energy and Department of Natural Resources. This public document was published at a total cost of \$835. 970 copies of this public document were published in this first printing at a total cost of \$835. The total cost of all printing of this document, including reprints, is \$835. This document was published by the Department of Natural Resources, P.O. Box 94396, Baton Rouge, LA 70804-9396 to promulgate the State Energy Program developed under authority of P.L. 94-163. This material was printed in accordance with the standards for printing by State agencies established pursuant to R.S. 43.31.



LOUISIANA DEPARTMENT OF NATURAL RESOURCES
Technology Assessment Division
 P. O. Box 94396
 Baton Rouge, LA 70804-9396

PRST STD
 U.S. POSTAGE
PAID
 BATON ROUGE, LA
 PERMIT NO. 936

ADDRESS SERVICE REQUESTED

INSIDE

Highlights
page 1

**Louisiana Monthly
Crude Oil & Condensate
Production**
page 1

Current Oil & Gas Data
page 2

**Louisiana Crude Oil and
Condensate Production**
page 3

**Louisiana Natural Gas
and Casinghead Gas
Production**
page 3

Quick Facts
page 4

**Featured Articles
and Inserts**
Louisiana Gas Shales and
Economic Impacts

Quick Facts

JANUARY 2014

Louisiana DNR Technology Assessment Division

SPOT MARKET PRICES

	Dec 13	Nov 13	Dec 12
Louisiana Natural Gas ^D (\$/MMBTU)	4.05	3.51	3.39
NYMEX Henry Hub Last Settle Gas Price ^B (\$/MMBTU)	3.82	3.50	3.70
Louisiana Sweet Crude - St. James ^B (\$/Barrel)	102.72	97.18	109.47

BAKER HUGHES RIG COUNTS

	Nov 13	Oct 13	Nov 12
North Louisiana ^A	24	24	24
South Louisiana Inland Waters ^A	18	18	18
South Louisiana Inland ^A	16	17	24
Louisiana State Offshore	1	3	0
Louisiana Federal OCS Offshore	50	47	48
Total Louisiana ^A (OCS included)	109	107	114

PRODUCTION (State Jurisdiction Only)

	Nov 13	Oct 13	Nov 12
Louisiana Crude Oil & Condensate (MMB)	6.1 ¹	6.1 ¹	6.2 ²
Louisiana Natural Gas & Casinghead (BCF)	194.3 ¹	196.4 ¹	230.6 ²

DRILLING PERMITS (State Jurisdiction Only)

	Nov 13	Oct 13	Nov 12
Total Louisiana Oil and Gas	131	113	107
Louisiana Wildcats	0	5	4
Louisiana Offshore (Wildcats included)	1	2	0