

# LOUISIANA ENERGY FACTS

Louisiana Department of Natural Resources  
Technology Assessment Division

[www.dnr.louisiana.gov/tad](http://www.dnr.louisiana.gov/tad)

## INSIDE

**Highlights**  
page 1

**Louisiana Natural Gas & Casinghead Production**  
page 1

**Current Oil & Gas Data**  
page 2

**Louisiana Mineral Severance Tax Revenue by Source**  
page 3

**Louisiana Mineral Royalty Revenue by Source**  
page 3

**Quick Facts**  
page 4

**Featured Articles and Inserts**  
[Compressed Natural Gas \(CNG\) - Fuel Stations in Louisiana](#)



Department of Natural Resources  
**Stephen Chustz**, Secretary

Technology Assessment Division  
**Thomas Harris**, Director  
**Manuel Lam**, Senior Analyst

617 North Third Street  
Baton Rouge, LA 70802

Tel. (225) 342-1270  
Fax. (225) 242-1397  
Email: [techasmt@la.gov](mailto:techasmt@la.gov)  
[www.dnr.louisiana.gov/tad](http://www.dnr.louisiana.gov/tad)

## Highlights

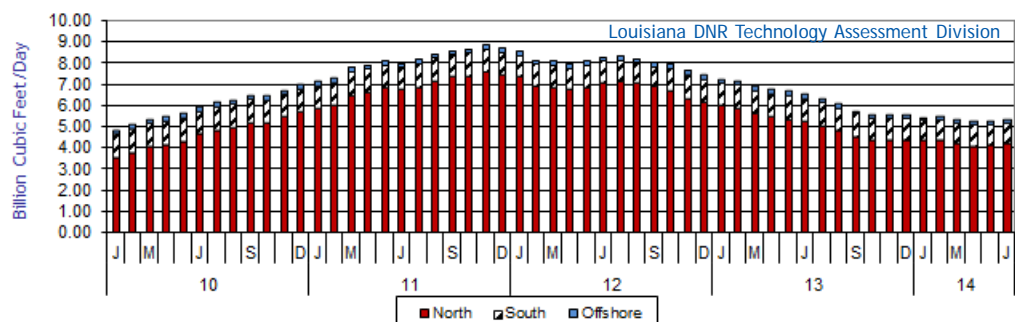
**AUGUST 2014**

There is a significant shift in LNG terminal planning and construction to allow for the export of LNG. The United States has eleven existing LNG terminals designed to import LNG. Developing new export facilities represent an opportunity to use Louisiana's abundant natural gas as a means of stabilizing energy prices throughout the world. Three active LNG facilities in Louisiana were constructed for import purposes: Trunkline LNG, Lake Charles; Sabine Pass LNG, Sabine; and Cameron LNG, Hackberry. Louisiana has the highest liquefied natural gas (LNG) import/export capacity in the U.S., with combined capacity of 7.9 Billion cubic feet per day (Bcf/d). Two Louisiana facilities have received all the necessary permits and licenses from FERC for construction of their export facilities. Louisiana's facilities are not now importing and, in fact, have changed their prosed thinking to export by requesting permits to begin export of LNG. The Cheniere, Sabine Pass facility is expected to process 2.2 Bcf/d and is fully licensed for export. The Sempra, Cameron LNG facility in Hackberry has not yet begun construction on its export capability, but it is expected to begin in the near future. Proposed to be capable of processing 1.7 Bcf/d, it is fully licensed to export to free trade agreement (FTA) countries.

## Louisiana Natural Gas & Casinghead Production\*\*, Excluding Federal OCS

Month	(Billion Cubic Feet/Day)						% Change	
	2009	2010	2011	2012	2013	2014	12/13	13/14
January	3.76	4.84	7.14	8.61	7.26	5.46		-24.88%
February	3.85	5.09	7.32	8.18	7.18 <sup>2</sup>	5.51		-23.21%
March	3.86	5.33	7.81	8.12 <sup>2</sup>	6.94	5.37		-22.69%
April	3.95	5.48	7.95	8.02 <sup>2</sup>	6.76	5.24		-22.53%
May	4.04	5.64	8.12	8.11	6.68	5.25 <sup>1</sup>		-21.39%
June	4.05	5.96	8.02	8.33 <sup>2</sup>	6.53	5.36 <sup>1</sup>		-18.01%
July	4.12	6.15	8.19	8.39	6.37 <sup>2</sup>		-24.09%	
August	4.29	6.29 <sup>2</sup>	8.47	8.21	6.09 <sup>2</sup>		-25.85%	
September	4.36	6.49	8.63	8.06	5.73		-28.98%	
October	4.53	6.46 <sup>2</sup>	8.71	7.99	5.56 <sup>2</sup>		-30.43%	
November	4.71	6.74	8.88	7.69	5.59 <sup>2</sup>		-27.32%	
December	4.68	6.99	8.74	7.49	5.58 <sup>2</sup>		-25.47%	
<b>Year Average</b>	<b>4.18</b>	<b>5.96</b>	<b>8.16</b>	<b>8.10</b>	<b>6.36<sup>2</sup></b>	<b>5.36<sup>**</sup></b>		

\*\* Partial Year



## Current Oil & Gas Data

Louisiana DNR Technology Assessment Division

<b>PRODUCTION</b>	<b>FEB 14</b>	<b>JAN 14</b>	<b>DEC 13</b>	<b>FEB 13</b>
LOUISIANA FEDERAL OFFSHORE (OCS)				
Crude Oil & Condensate <sup>C</sup> (MMB)	30 <sup>1</sup>	35 <sup>1</sup>	35 <sup>1</sup>	32 <sup>1</sup>
Natural Gas & Casinghead <sup>C</sup> (BCF)	70 <sup>1</sup>	79 <sup>1</sup>	84 <sup>1</sup>	81 <sup>1</sup>
THE UNITED STATES TOTAL				
Crude Oil & Condensate <sup>C</sup> (MMB)	224	247 <sup>2</sup>	245	199 <sup>2</sup>
Natural Gas & Casinghead <sup>C</sup> (BCF)	1,899	2,110 <sup>2</sup>	2,092	1,844 <sup>2</sup>
<b>IMPORTS</b>				
U.S. Crude Oil <sup>C</sup> (MMB)	202	235	241	204
U.S. Natural Gas <sup>C</sup> (BCF)	245	295	273	237
<b>BAKER HUGHES RIG COUNTS</b>				
U.S. Gas <sup>A</sup>	341	362	373	426
U.S. Oil <sup>A</sup>	1,424	1,403	1,396	1,332
U.S. Offshore <sup>A</sup>	58	58	61	54
U.S. Total <sup>A</sup>	1,769	1,769	1,771	1,762
<b>PRICES</b>				
CRUDE OIL (\$/barrel)				
OPEC Average <sup>C</sup> (F.O.B.)	97.51	94.86	94.41	106.93
U.S. Imports Average <sup>C</sup> (F.O.B.)	92.76	90.93 <sup>2</sup>	89.90	100.96 <sup>2</sup>
U.S. Wellhead Average <sup>C</sup>	96.89	89.59	91.85	95.01 <sup>2</sup>
Gulf OCS Wellhead Average <sup>C</sup>	101.79	88.11	93.94	107.53 <sup>2</sup>
State Severance Wellhead Average <sup>E</sup>	96.40	96.09	106.02	105.56
NATURAL GAS (\$/MCF)				
U.S. City Gates Average <sup>C</sup>	6.31	5.58	4.91	4.56
U.S. Imports Average <sup>C</sup> (F.O.B.)	8.94	6.95 <sup>2</sup>	4.75	3.99
U.S. Spot Market Average <sup>D</sup>	8.22	6.43	4.69	4.07
State Royalty Wellhead Average	5.69	4.53	4.06	3.33 <sup>2</sup>
NYMEX Henry Hub End of the Month Settle Gas Price <sup>B</sup> (\$/MMBTU)	5.56	4.41	3.82	3.23

### Key

### Data Sources

<b>1</b>	Estimated	<b>MCF</b>	Thousand Cubic Feet	<b>A</b>	Oil & Gas Journal	<b>D</b>	Natural Gas Week
<b>2</b>	Revised	<b>MMB</b>	Million Barrels	<b>B</b>	Wall Street Journal	<b>E</b>	LA Dept of Revenue
<b>BCF</b>	Billion Cubic Feet	<b>NA</b>	Not Available	<b>C</b>	U. S. Dept. of Energy		
<b>BTU</b>	British Thermal Unit	<b>OCS</b>	Outer Continental Shelf				
<b>F.O.B.</b>	Free on Board	<b>MMBTU</b>	Million British Thermal Units				
				<b>Note:</b> Unless otherwise specified, data is from the Louisiana Department of Natural Resources and excludes Federal OCS.			

### Note from the Editors

*Louisiana Energy Facts* is published monthly by the Louisiana Department of Natural Resources, Technology Assessment Division as a public service to individuals interested in Louisiana energy activities. Content includes recent oil, gas and other energy statistics and a brief analysis of current trends.

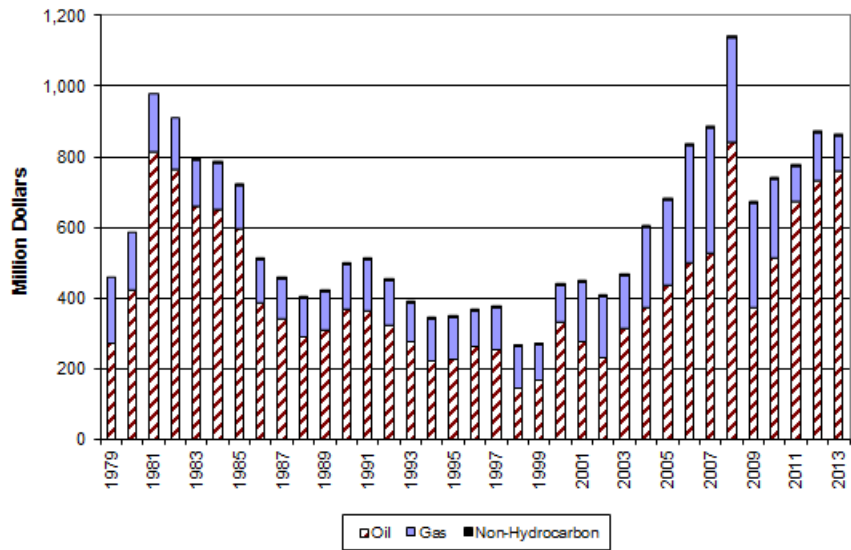
*Louisiana Energy Facts* articles provide insight and information on subjects of special interest to our readers, and may announce relevant, forthcoming publications.

These documents are available on the Louisiana Department of Natural Resources, Technology Assessment Division home page: <http://www.dnr.louisiana.gov/tad>. From the menu, select **Newsletters**. Our current online holdings include issues dating from 1998 through the present. If the issue you are seeking is unavailable, please contact us.

**To request a subscription or update your mailing address**, contact us with your information. Please specify print or electronic subscription. **We value your feedback.** Please send your comments and suggestions for improving and enhancing the newsletter to: [techasmt@la.gov](mailto:techasmt@la.gov).

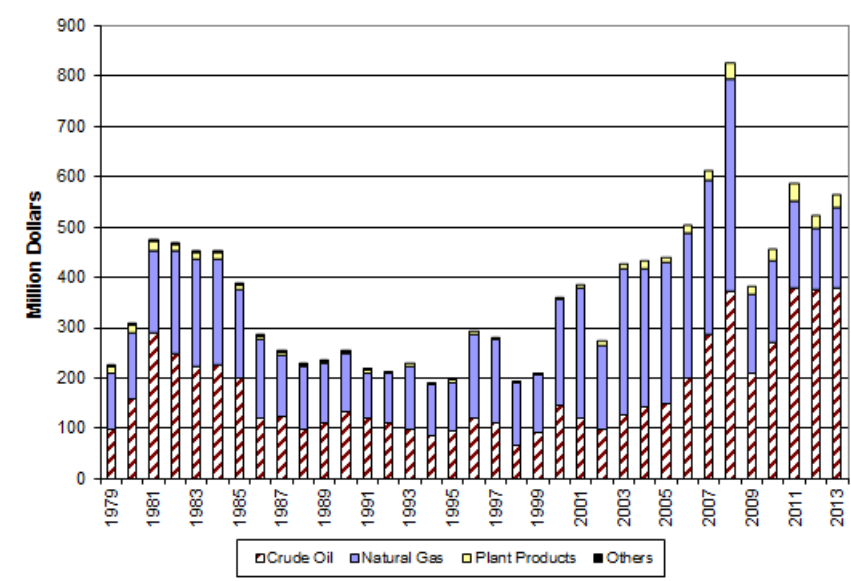
# Louisiana Mineral Severance Tax Revenue by Source, Excluding Federal OCS

Louisiana DNR Technology Assessment Division



# Louisiana Mineral Royalty Revenue by Source, Excluding Federal OCS

Louisiana DNR Technology Assessment Division



This issue of **Louisiana Energy Facts** is funded 100% (\$615) with Petroleum Violation Escrow funds as part of the State Energy Program as approved by the U.S. Department of Energy and Department of Natural Resources. This public document was published at a total cost of \$615. 930 copies of this public document were published in this first printing at a total cost of \$615. The total cost of all printing of this document, including reprints, is \$615. This document was published by the Department of Natural Resources, P.O. Box 94396, Baton Rouge, LA 70804-9396 to promulgate the State Energy Program developed under authority of P.L. 94-163. This material was printed in accordance with the standards for printing by State agencies established pursuant to R.S. 43.31.



**LOUISIANA DEPARTMENT OF NATURAL RESOURCES**  
*Technology Assessment Division*  
 P. O. Box 94396  
 Baton Rouge, LA 70804-9396

PRST STD  
 U.S. POSTAGE  
**PAID**  
 BATON ROUGE, LA  
 PERMIT NO. 936

## ADDRESS SERVICE REQUESTED

### INSIDE

**Highlights**  
page 1

**Louisiana Natural Gas & Casinghead Production**  
page 1

**Current Oil & Gas Data**  
page 2

**Louisiana Mineral Severance Tax Revenue by Source**  
page 3

**Louisiana Mineral Royalty Revenue by Source**  
page 3

**Quick Facts**  
page 4

**Featured Articles and Inserts**  
 Compressed Natural Gas (CNG) -  
 Fuel Stations in Louisiana

## Quick Facts

## AUGUST 2014

Louisiana DNR Technology Assessment Division

### SPOT MARKET PRICES

	Jul 14	Jun 14	Jul 13
Louisiana Natural Gas <sup>D</sup> (\$/MMBTU)	4.01	4.51	3.61
NYMEX Henry Hub Last Settle Gas Price <sup>B</sup> (\$/MMBTU)	4.40	4.62	3.71
Louisiana Sweet Crude - St. James <sup>B</sup> (\$/Barrel)	106.41	108.22	109.28 <sup>2</sup>

### BAKER HUGHES RIG COUNTS

	Jun 14	May 14	Jun 13
North Louisiana <sup>A</sup>	27	28	24
South Louisiana Inland Waters <sup>A</sup>	16	14	21
South Louisiana Inland <sup>A</sup>	15	19	17
Louisiana State Offshore	1	0	1
Louisiana Federal OCS Offshore	50	53	44
Total Louisiana <sup>A</sup> (OCS included)	109	114	106

### PRODUCTION (State Jurisdiction Only)

	Jun 14	May 14	Jun 13
Louisiana Crude Oil & Condensate (MMB)	5.6 <sup>1</sup>	5.7 <sup>1</sup>	6.0 <sup>2</sup>
Louisiana Natural Gas & Casinghead (BCF)	160.7 <sup>1</sup>	162.7 <sup>1</sup>	196.0 <sup>2</sup>

### DRILLING PERMITS (State Jurisdiction Only)

	Jun 14	May 14	Jun 13
Total Louisiana Oil and Gas	159	122	120
Louisiana Wildcats	5	2 <sup>2</sup>	6
Louisiana Offshore (Wildcats included)	0	0	6