

# LOUISIANA ENERGY FACTS

Louisiana Department of Natural Resources  
Technology Assessment Division

[www.dnr.louisiana.gov/tad](http://www.dnr.louisiana.gov/tad)

## INSIDE

**Highlights**  
page 1

**Louisiana Monthly  
Crude Oil &  
Condensate Production**  
page 1

**Current Oil & Gas Data**  
page 2

**Louisiana  
Natural Gas Production  
from Incapable Oil  
and Gas Wells**  
page 3

**Louisiana  
Crude Oil Production  
from Stripper Wells**  
page 3

**Quick Facts**  
page 4

**Featured Articles  
and Inserts**  
[Selected Louisiana  
Energy Statistics](#)



Department of Natural Resources  
**Stephen Chustz**, Secretary

Technology Assessment Division  
**Thomas Harris**, Director  
**Manuel Lam**, Senior Analyst

617 North Third Street  
Baton Rouge, LA 70802

Tel. (225) 342-1270  
Fax. (225) 242-1397  
Email: [techasmt@la.gov](mailto:techasmt@la.gov)  
[www.dnr.louisiana.gov/tad](http://www.dnr.louisiana.gov/tad)

## Highlights

**JULY 2015**

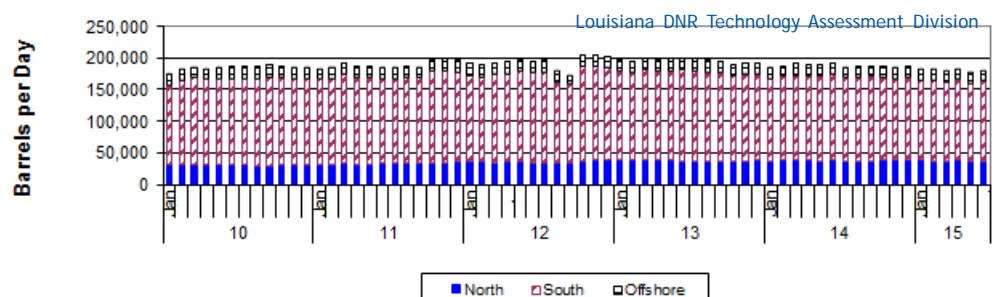
The Baker Hughes weekly active drilling rigs count in the U.S. increased by 2 rigs on the last week of June 2015 over the previous week. This interrupted the steady decline trend occurring since late last year. On December 5, 2014, there were 1,920 active drilling rigs in the U.S., and by June 26, 2015, there were only 859 active drilling rigs (a 55% decline). The Louisiana active drilling rigs count increased by 6 rigs in the last week of June 2015 over the previous week. Louisiana rig counts showed a lot of up and down trends from week-to-week since late last year. On December 5, 2014, there were 114 active drilling rigs in Louisiana, including federal waters adjacent to the state coastline, and by June 26, 2015, there were only 75 active drilling rigs (a 34% decline). The drilling slowdown was attributed to falling oil and gas prices, and high crude and natural gas inventory in storage.

### Louisiana Monthly Crude Oil & Condensate Production

Month	(Barrels/Day)						% Change	
	2010	2011	2012	2013	2014	2015	13/14	14/15
January	174,156	183,628	192,955 <sup>2</sup>	199,007 <sup>2</sup>	184,557 <sup>2</sup>	182,695		-1.01%
February	181,648	184,198	189,968 <sup>2</sup>	195,374 <sup>2</sup>	188,501 <sup>2</sup>	182,318		-3.28%
March	184,735	193,617	192,724 <sup>2</sup>	199,712 <sup>2</sup>	193,714 <sup>2</sup>	179,762 <sup>1</sup>		-7.20%
April	183,468	187,445	194,868 <sup>2</sup>	197,273 <sup>2</sup>	190,434 <sup>2</sup>	183,343 <sup>1</sup>		-3.72%
May	186,133	187,800	198,097 <sup>2</sup>	199,954 <sup>2</sup>	191,092 <sup>2</sup>	177,144 <sup>1</sup>		-7.30%
June	186,855	184,942	194,745 <sup>2</sup>	201,061 <sup>2</sup>	192,927 <sup>2</sup>	180,892 <sup>1</sup>		-6.24%
July	187,218	184,625	198,078 <sup>2</sup>	199,567 <sup>2</sup>	186,432 <sup>2</sup>			-6.58%
August	187,229	187,929	179,101 <sup>2</sup>	199,227 <sup>2</sup>	187,243 <sup>2</sup>			-6.02%
September	190,211	185,828	173,053 <sup>2</sup>	196,630 <sup>2</sup>	188,445 <sup>2</sup>			-4.16%
October	188,638	198,645	206,270 <sup>2</sup>	190,054 <sup>2</sup>	187,255 <sup>2</sup>			-1.47%
November	185,826	199,821	206,046 <sup>2</sup>	193,406 <sup>2</sup>	184,834 <sup>2</sup>			-4.43%
December	185,859	198,938	203,433 <sup>2</sup>	192,925 <sup>2</sup>	187,657 <sup>2</sup>			-2.73%
<b>Year Average</b>	<b>185,165</b>	<b>189,785</b>	<b>194,111<sup>2</sup></b>	<b>197,016<sup>2</sup></b>	<b>188,591<sup>2</sup></b>	<b>181,026<sup>*</sup></b>		

<sup>\*</sup> Partial Year

<sup>\*\*</sup>All data are revised; see July 2001 statistic changes explanation



## Current Oil & Gas Data

Louisiana DNR Technology Assessment Division

	JAN 15	DEC 14	NOV 14	JAN 14
<b>PRODUCTION</b>				
GOM CENTRAL FEDERAL OFFSHORE <sup>F</sup> (OCS)				
Crude Oil & Condensate (MMB)	37	40	38	37
Natural Gas & Casinghead (BCF)	92	95	90	90
THE UNITED STATES TOTAL				
Crude Oil & Condensate <sup>C</sup> (MMB)	286	286	271	248 <sup>2</sup>
Natural Gas & Casinghead <sup>C</sup> (BCF)	2,282	2,315	2,192	2,102 <sup>2</sup>
<b>IMPORTS</b>				
U.S. Crude Oil <sup>C</sup> (MMB)	222	223	218	235
U.S. Natural Gas <sup>C</sup> (BCF)	280	254	228	295
<b>BAKER HUGHES RIG COUNTS</b>				
U.S. Gas <sup>A</sup>	320	342	351	362
U.S. Oil <sup>A</sup>	1,362	1,539	1,573	1,403
U.S. Offshore <sup>A</sup>	53	59	53	58
U.S. Total <sup>A</sup>	1,683	1,882	1,925	1,769
<b>PRICES</b>				
CRUDE OIL (\$/barrel)				
OPEC Average <sup>C</sup> (F.O.B.)	41.92	52.49	71.14	94.86
U.S. Imports Average <sup>C</sup> (F.O.B.)	39.92	50.01	67.48	90.93
U.S. Wellhead Average <sup>C</sup>	43.06	54.86	71.07	89.59
Gulf OCS Wellhead Average <sup>C</sup>	51.57	66.27	80.98	88.11
State Severance Wellhead Average <sup>E</sup>	N/A	N/A	N/A	96.09
NATURAL GAS (\$/MCF)				
U.S. City Gates Average <sup>C</sup>	4.46	5.16	4.92	5.55 <sup>2</sup>
U.S. Imports Average <sup>C</sup> (F.O.B.)	4.79	4.44	3.97	7.15 <sup>2</sup>
U.S. Spot Market Average <sup>D</sup>	3.56	3.78	4.08	6.43
State Royalty Wellhead Average	3.06	3.70	3.96	4.53
NYMEX Henry Hub End of the Month Settle Gas Price <sup>B</sup> (\$/MMBTU)	3.19	4.28	3.73	4.41

### Key

### Data Sources

<b>1</b>	Estimated	<b>MCF</b>	Thousand Cubic Feet
<b>2</b>	Revised	<b>MMB</b>	Million Barrels
<b>BCF</b>	Billion Cubic Feet	<b>N/A</b>	Not Available
<b>BTU</b>	British Thermal Unit	<b>OCS</b>	Outer Continental Shelf
<b>F.O.B.</b>	Free on Board	<b>MMBTU</b>	Million British Thermal Units

<b>A</b>	Oil & Gas Journal	<b>D</b>	Natural Gas Week
<b>B</b>	Wall Street Journal	<b>E</b>	LA Dept of Revenue
<b>C</b>	U. S. Dept. of Energy	<b>F</b>	BOEM

**Note:** Unless otherwise specified, data is from the Louisiana Department of Natural Resources and excludes Federal OCS.

### Note from the Editors

*Louisiana Energy Facts* is published monthly by the Louisiana Department of Natural Resources, Technology Assessment Division as a public service to individuals interested in Louisiana energy activities. Content includes recent oil, gas and other energy statistics and a brief analysis of current trends.

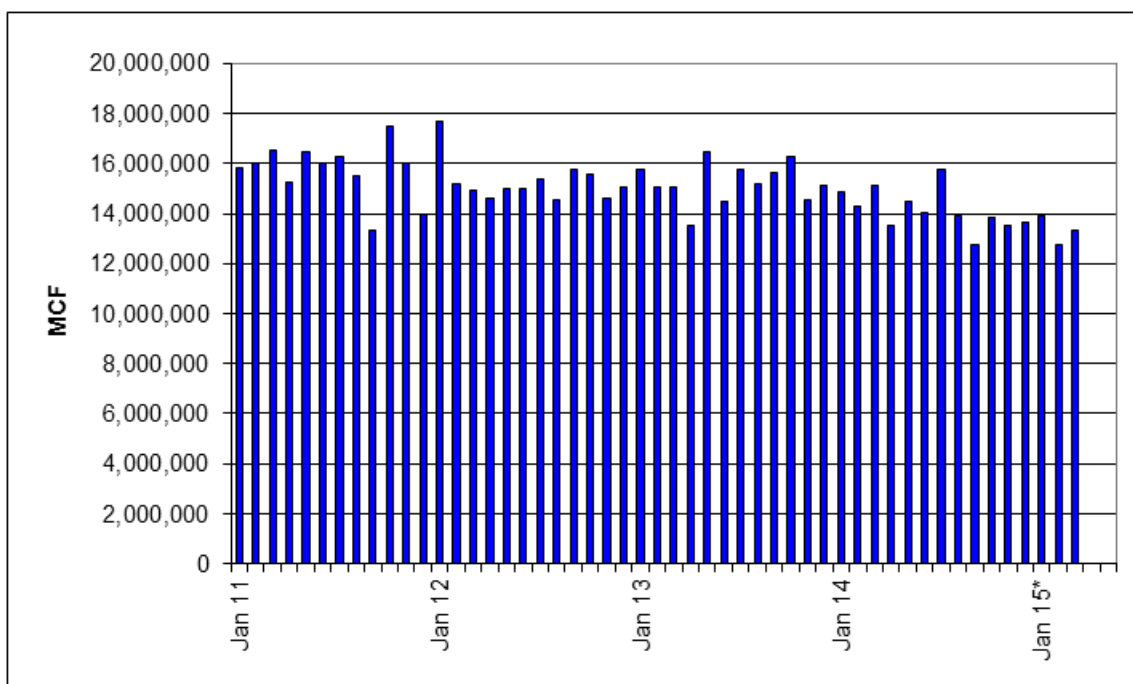
*Louisiana Energy Facts* articles provide insight and information on subjects of special interest to our readers, and may announce relevant, forthcoming publications.

These documents are available on the Louisiana Department of Natural Resources, Technology Assessment Division home page: <http://www.dnr.louisiana.gov/tad>. From the menu, select **Newsletters**. Our current online holdings include issues dating from 1998 through the present. If the issue you are seeking is unavailable, please contact us.

**To request a subscription or update your mailing address**, contact us with your information. Please specify print or electronic subscription. **We value your feedback.** Please send your comments and suggestions for improving and enhancing the newsletter to: [techasmt@la.gov](mailto:techasmt@la.gov).

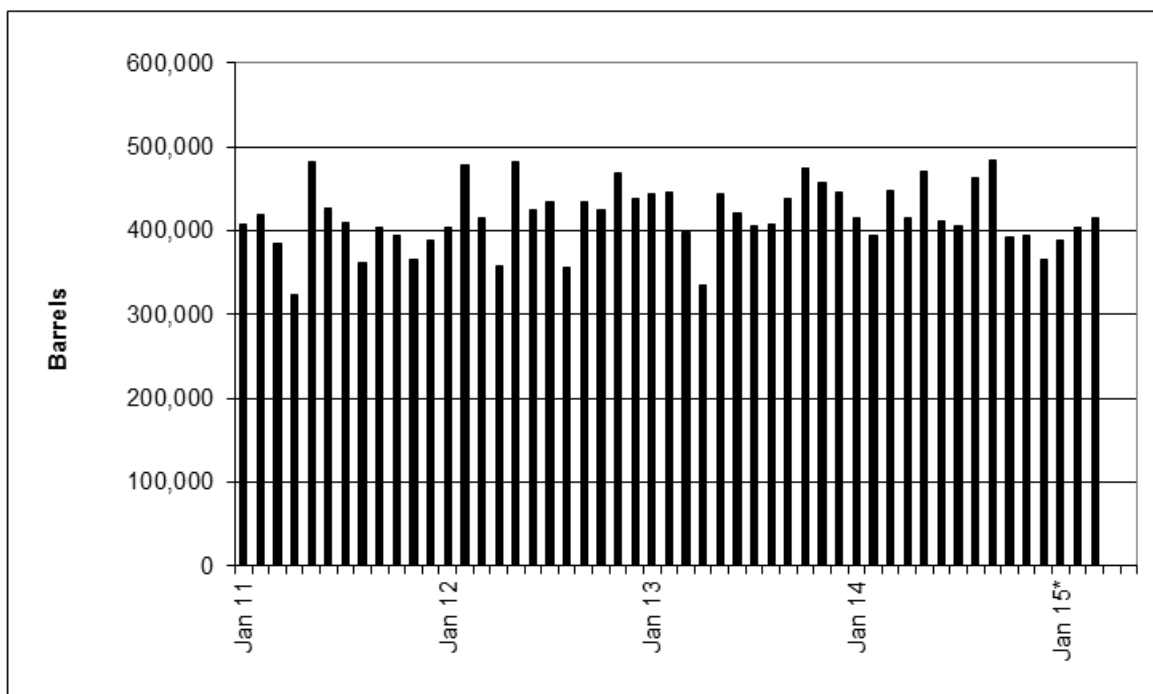
# Louisiana Natural Gas Production from Incapable Oil and Gas Wells<sup>E</sup>

Louisiana DNR Technology Assessment Division



# Louisiana Crude Oil Production from Stripper Wells<sup>E</sup>

Louisiana DNR Technology Assessment Division



This issue of **Louisiana Energy Facts** is funded 100% (\$955.38) with Petroleum Violation Escrow funds as part of the State Energy Program as approved by the U.S. Department of Energy and Department of Natural Resources. This public document was published at a total cost of \$955.38. 930 copies of this public document were published in this first printing at a total cost of \$955.38. The total cost of all printing of this document, including reprints, is \$955.38. This document was published by the Department of Natural Resources, P.O. Box 94396, Baton Rouge, LA 70804-9396 to promulgate the State Energy Program developed under authority of P.L. 94-163. This material was printed in accordance with the standards for printing by State agencies established pursuant to R.S. 43.31.



**LOUISIANA DEPARTMENT OF NATURAL RESOURCES**  
*Technology Assessment Division*  
 P. O. Box 94396  
 Baton Rouge, LA 70804-9396

PRST STD  
 U.S. POSTAGE  
**PAID**  
 BATON ROUGE, LA  
 PERMIT NO. 936

## ADDRESS SERVICE REQUESTED

### INSIDE

**Highlights**  
page 1

**Louisiana Monthly  
Crude Oil &  
Condensate Production**  
page 1

**Current Oil & Gas Data**  
page 2

**Louisiana  
Natural Gas Production  
from Incapable Oil  
and Gas Wells**  
page 3

**Louisiana  
Crude Oil Production  
from Stripper Wells**  
page 3

**Quick Facts**  
page 4

**Featured Articles  
and Inserts**  
[Selected Louisiana  
Energy Statistics](#)

## Quick Facts

## JULY 2015

Louisiana DNR Technology Assessment Division

### SPOT MARKET PRICES

	Jun 15	May 15	Jun 14
Louisiana Natural Gas <sup>D</sup> (\$/MMBTU)	2.70	2.69	4.51
NYMEX Henry Hub Last Settle Gas Price <sup>B</sup> (\$/MMBTU)	2.82	2.52	4.62
Louisiana Sweet Crude - St. James <sup>B</sup> (\$/Barrel)	63.23	64.96	108.22

### BAKER HUGHES RIG COUNTS

	May 15	Apr 15	May 14
North Louisiana <sup>A</sup>	27	26	28
South Louisiana Inland Waters <sup>A</sup>	3	4	14
South Louisiana Inland <sup>A</sup>	10	10	19
Louisiana State Offshore	0	0	0
Louisiana Federal OCS Offshore	30	30 <sup>2</sup>	53
Total Louisiana <sup>A</sup> (OCS included)	70	70	114

### PRODUCTION (State Jurisdiction Only)

	May 15	Apr 15	May 14
Louisiana Crude Oil & Condensate (MMB)	5.5 <sup>1</sup>	5.5 <sup>1</sup>	5.9 <sup>2</sup>
Louisiana Natural Gas & Casinghead (BCF)	135.1 <sup>1</sup>	138.0 <sup>1</sup>	169.8 <sup>2</sup>

### DRILLING PERMITS (State Jurisdiction Only)

	May 15	Apr 15	May 14
Total Louisiana Oil and Gas	64	53	122
Louisiana Wildcats	2	4	1 <sup>2</sup>
Louisiana Offshore (Wildcats included)	1	0	0