

# LOUISIANA ENERGY FACTS

Louisiana Department of Natural Resources  
Technology Assessment Division

[www.dnr.louisiana.gov/tad](http://www.dnr.louisiana.gov/tad)

## INSIDE

**Highlights**  
page 1

**Louisiana Monthly  
Crude Oil &  
Condensate Production**  
page 1

**Current Oil & Gas Data**  
page 2

**Louisiana Natural Gas  
Production from  
Incapable Oil and  
Gas Wells**  
page 3

**Louisiana Crude Oil  
Production from  
Stripper Wells**  
page 3

**Quick Facts**  
page 4

**Featured Articles  
and Inserts**  
[Selected Louisiana  
Energy Statistics](#)



Department of Natural Resources  
**Thomas Harris**, Secretary

Technology Assessment Division  
**Paul Miller**, Director  
**Manuel Lam**, Senior Analyst

617 North Third Street  
Baton Rouge, LA 70802

Tel. (225) 342-1270  
Fax. (225) 242-1397  
Email: [techasmt@la.gov](mailto:techasmt@la.gov)  
[www.dnr.louisiana.gov/tad](http://www.dnr.louisiana.gov/tad)

## Highlights

In the first quarter of 2016, only 80 state drilling permits were issued. The number of permits issued was 37% lower than the number issued in the first quarter of 2015. The 2016 first quarter reflected the lowest number of permits issued in a quarter over the past 50 years, which was caused by low oil and gas prices. The 2016 first quarter average LLS crude oil price was \$35.14 per barrel, or 33.5% lower than the 2015 first quarter. The 2016 first quarter average spot natural gas price was \$1.94 per MMBTU, or 31.8% lower than the 2015 first quarter. As oil and gas prices recover, the number of permits issued should also increase.

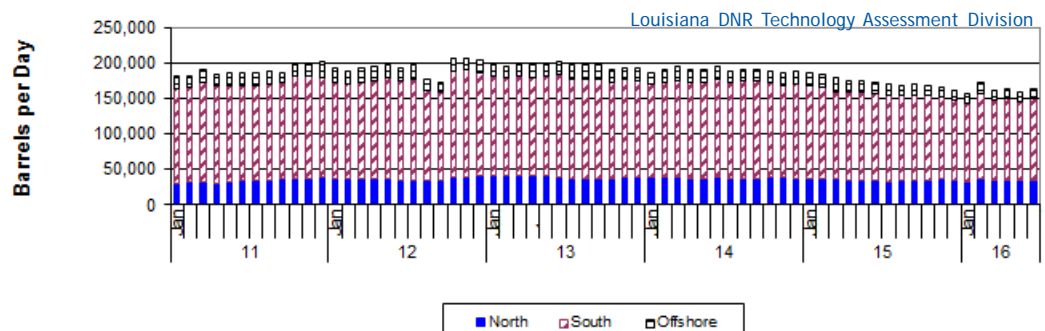
## JULY 2016

### Louisiana Monthly Crude Oil & Condensate Production\*\*, Excluding Federal OCS

Month	(Barrels/Day)						% Change	
	2011	2012	2013	2014	2015	2016	14/15	15/16
January	180,259	191,556	198,290	186,000	184,519 <sup>2</sup>	156,242		-15.32%
February	181,277	188,634	194,808	189,909	183,140 <sup>2</sup>	170,901		-6.68%
March	190,949	191,789	199,750	195,363	177,695 <sup>2</sup>	160,895 <sup>1</sup>		-9.45%
April	184,294	193,713	196,796	190,363	175,222 <sup>2</sup>	163,704 <sup>1</sup>		-6.57%
May	185,814	196,736	199,787	191,054	174,684 <sup>2</sup>	157,940 <sup>1</sup>		-9.59%
June	184,987	192,223	201,355	194,212	171,854 <sup>2</sup>	162,654 <sup>1</sup>		-5.35%
July	184,928	196,206	197,077	187,372	169,634 <sup>2</sup>		-9.47%	
August	188,056	177,208	197,622	188,990	168,374 <sup>2</sup>		-10.91%	
September	186,358	171,956	196,718	190,300	170,646 <sup>2</sup>		-10.33%	
October	199,265	205,182	189,914	188,438	168,329 <sup>2</sup>		-10.67%	
November	200,118	206,068	193,186	184,944	166,224 <sup>2</sup>		-10.12%	
December	200,290	204,316	192,407	187,386	160,628 <sup>2</sup>		-14.28%	
<b>Year Average</b>	<b>188,883</b>	<b>192,965</b>	<b>196,476</b>	<b>189,528</b>	<b>172,579<sup>2</sup></b>	<b>162,056<sup>*</sup></b>		

\* Partial Year

\*\*All data are revised; see July 2001 statistic changes explanation



## Current Oil & Gas Data

Louisiana DNR Technology Assessment Division

	JAN 16	DEC 15	NOV 15	JAN 15
<b>PRODUCTION</b>				
GOM CENTRAL FEDERAL OFFSHORE <sup>F</sup> (OCS)				
Crude Oil & Condensate (MMB)	46	47 <sup>2</sup>	43 <sup>2</sup>	42 <sup>2</sup>
Natural Gas & Casinghead (BCF)	94	98 <sup>2</sup>	92 <sup>2</sup>	96
<b>THE UNITED STATES TOTAL</b>				
Crude Oil & Condensate <sup>C</sup> (MMB)	285	287	280 <sup>2</sup>	290 <sup>2</sup>
Natural Gas & Casinghead <sup>C</sup> (BCF)	2,301	2,289	2,227	2,266 <sup>2</sup>
<b>IMPORTS</b>				
U.S. Crude Oil <sup>C</sup> (MMB)	238	245	221	222
U.S. Natural Gas <sup>C</sup> (BCF)	273	227	218	279 <sup>2</sup>
<b>BAKER HUGHES RIG COUNTS</b>				
U.S. Gas <sup>A</sup>	139	174	194	320
U.S. Oil <sup>A</sup>	515	537	566	1,362
U.S. Offshore <sup>A</sup>	27	24	31	53
U.S. Total <sup>A</sup>	654	714	760	1,683
<b>PRICES</b>				
<b>CRUDE OIL (\$/barrel)</b>				
OPEC Average <sup>C</sup> (F.O.B.)	24.11	29.23	33.98	41.92 <sup>2</sup>
U.S. Imports Average <sup>C</sup> (F.O.B.)	23.73	28.18	33.59	39.92 <sup>2</sup>
U.S. Wellhead Average <sup>C</sup>	27.11	32.26	38.19	43.06
Gulf OCS Wellhead Average <sup>C</sup>	30.54	35.88	39.94	51.57
State Severance Wellhead Average <sup>E</sup>	38.22	59.34	51.62	76.50 <sup>2</sup>
<b>NATURAL GAS (\$/MCF)</b>				
U.S. City Gates Average <sup>C</sup>	3.44	3.76	3.68	4.48 <sup>2</sup>
U.S. Imports Average <sup>C</sup> (F.O.B.)	2.80	2.28	2.40	4.75 <sup>2</sup>
U.S. Spot Market Average <sup>D</sup>	2.54	1.96	2.14	3.56
State Royalty Wellhead Average	2.16	1.86	1.96	3.04
NYMEX Henry Hub End of the Month Settle Gas Price <sup>B</sup> (\$/MMBTU)	2.37	2.21	2.03	3.19

### Key

### Data Sources

<b>1</b>	Estimated	<b>MCF</b>	Thousand Cubic Feet
<b>2</b>	Revised	<b>MMB</b>	Million Barrels
<b>BCF</b>	Billion Cubic Feet	<b>NA</b>	Not Available
<b>BTU</b>	British Thermal Unit	<b>OCS</b>	Outer Continental Shelf
<b>FO.B.</b>	Free on Board	<b>MMBTU</b>	Million British Thermal Units

<b>A</b>	Oil & Gas Journal	<b>D</b>	Natural Gas Week
<b>B</b>	Wall Street Journal	<b>E</b>	LA Dept of Revenue
<b>C</b>	U. S. Dept. of Energy	<b>F</b>	BOEM

**Note:** Unless otherwise specified, data is from the Louisiana Department of Natural Resources and excludes Federal OCS.

### Note from the Editors

**Louisiana Energy Facts** is published monthly by the Louisiana Department of Natural Resources, Technology Assessment Division as a public service to individuals interested in Louisiana energy activities. Content includes recent oil, gas and other energy statistics and a brief analysis of current trends.

**Louisiana Energy Facts** articles provide insight and information on subjects of special interest to our readers, and may announce relevant, forthcoming publications.

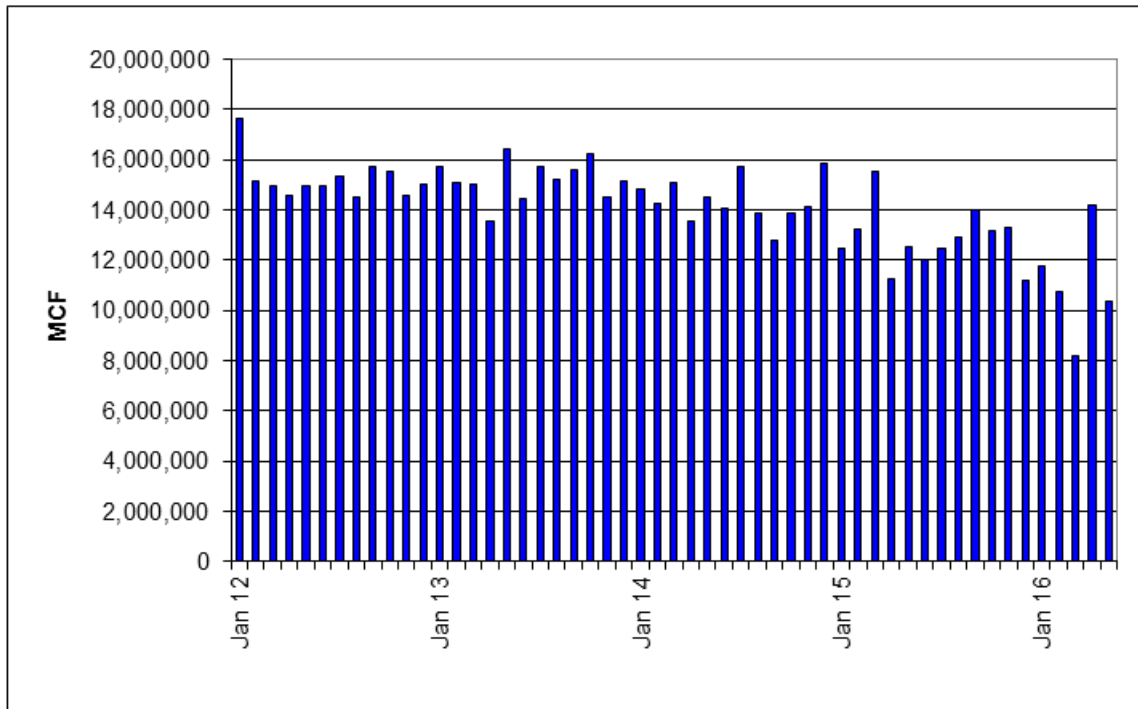
These documents are available on the Louisiana Department of Natural Resources, Technology Assessment Division home page:

<http://www.dnr.louisiana.gov/tad>. From the menu, select **Newsletters**. Our current online holdings include issues dating from 1998 through the present. If the issue you are seeking is unavailable, please contact us.

To request notification of when the **Louisiana Energy Facts** is available online, contact us at [techasmt@la.gov](mailto:techasmt@la.gov) with your name, title, company name, email address, and phone number. Please specify that you would like to be added to our email notification database for an electronic subscription.

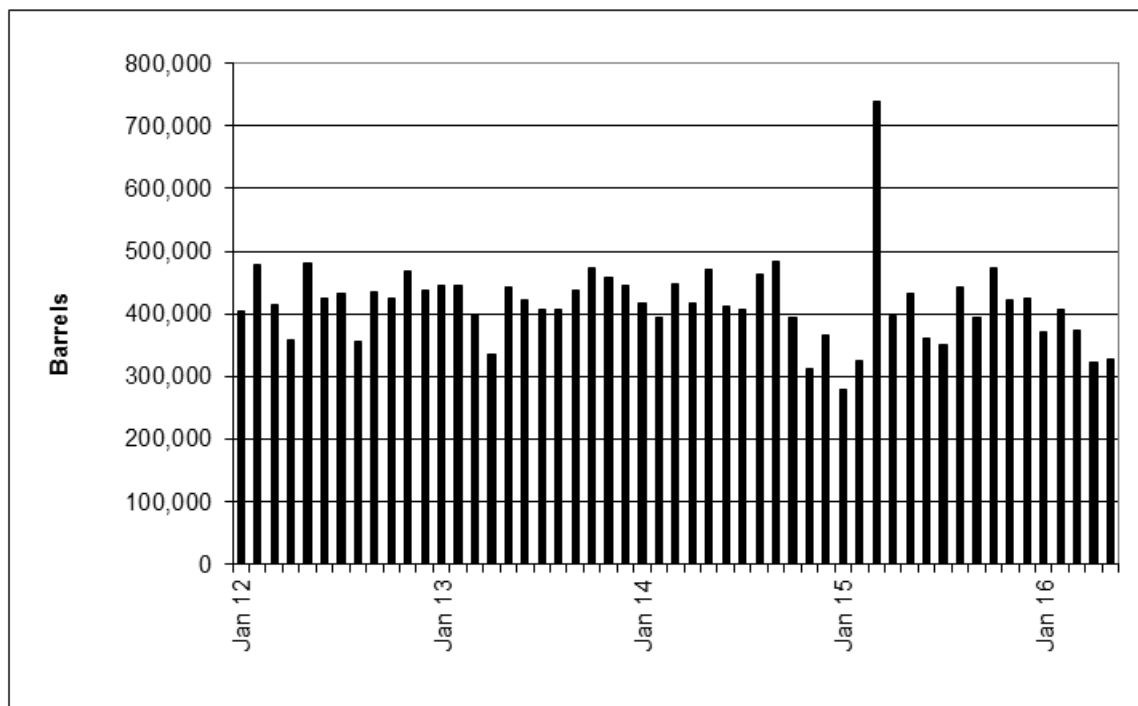
# Louisiana Natural Gas Production from Incapable Oil and Gas Wells<sup>E</sup>

Louisiana DNR Technology Assessment Division



# Louisiana Crude Oil Production from Stripper Wells<sup>E</sup>

Louisiana DNR Technology Assessment Division





**LOUISIANA DEPARTMENT OF NATURAL RESOURCES**

*Technology Assessment Division*

P. O. Box 94396

Baton Rouge, LA 70804-9396

**INSIDE**

**Highlights**  
page 1

**Louisiana Monthly  
Crude Oil &  
Condensate Production**  
page 1

**Current Oil & Gas Data**  
page 2

**Louisiana Natural Gas  
Production from  
Incapable Oil and  
Gas Wells**  
page 3

**Louisiana Crude Oil  
Production from  
Stripper Wells**  
page 3

**Quick Facts**  
page 4

**Featured Articles  
and Inserts**  
[Selected Louisiana  
Energy Statistics](#)

**Quick Facts**

**JULY 2016**

Louisiana DNR Technology Assessment Division

**SPOT MARKET PRICES**

	<b>Jun 16</b>	<b>May 16</b>	<b>Jun 15</b>
Louisiana Natural Gas <sup>D</sup> (\$/MMBTU)	2.29	1.83 <sup>2</sup>	2.70
NYMEX Henry Hub Last Settle Gas Price <sup>B</sup> (\$/MMBTU)	1.96	2.00	2.82
Louisiana Sweet Crude - St. James (\$/Barrel)	50.62	48.70	63.44

**BAKER HUGHES RIG COUNTS**

	<b>May 16</b>	<b>Apr 16</b>	<b>May 15</b>
North Louisiana <sup>A</sup>	25	15	27
South Louisiana Inland Waters <sup>A</sup>	4	4	3
South Louisiana Inland <sup>A</sup>	4	5	10
Louisiana State Offshore	0	0	0
Louisiana Federal OCS Offshore	22	23	30
Total Louisiana <sup>A</sup> (OCS included)	45	47	70

**PRODUCTION (State Jurisdiction Only)**

	<b>May 16</b>	<b>Apr 16</b>	<b>May 15</b>
Louisiana Crude Oil & Condensate (MMB)	4.9 <sup>1</sup>	4.9 <sup>1</sup>	5.4 <sup>2</sup>
Louisiana Natural Gas & Casinghead (BCF)	139.9 <sup>1</sup>	140.6 <sup>1</sup>	154.2 <sup>2</sup>

**DRILLING PERMITS (State Jurisdiction Only)**

	<b>May 16</b>	<b>Apr 16</b>	<b>May 15</b>
Total Louisiana Oil and Gas	31	32	64
Louisiana Wildcats	1	2	2
Louisiana Offshore (Wildcats included)	0	0	1