

# LOUISIANA ENERGY FACTS

Louisiana Department of Natural Resources  
Technology Assessment Division

[www.dnr.louisiana.gov/tad](http://www.dnr.louisiana.gov/tad)

## INSIDE

**Highlights**  
page 1

**Louisiana Natural Gas & Casinghead Production**  
page 1

**Current Oil & Gas Data**  
page 2

**Louisiana Mineral Royalty Revenue by Source**  
page 3

**Louisiana Mineral Severance Tax Revenue by Source**  
page 3

**Quick Facts**  
page 4

**Featured Articles and Inserts**  
[Louisiana, An Energy Consuming State: An Update Using 2014 Data](#)



Department of Natural Resources  
Thomas Harris, Secretary

Technology Assessment Division  
Paul Miller, Director  
Manuel Lam, Senior Analyst

617 North Third Street  
Baton Rouge, LA 70802

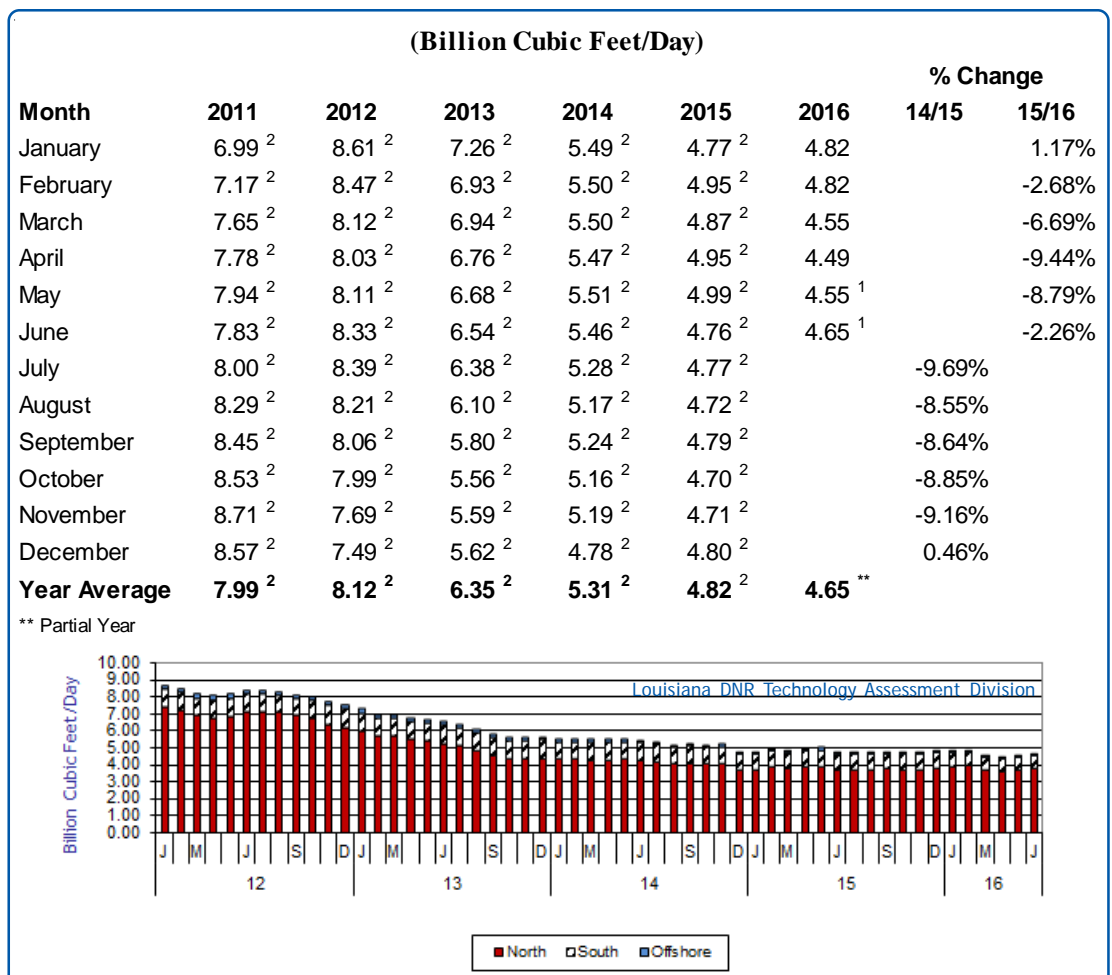
Tel. (225) 342-1270  
Fax. (225) 242-1397  
Email: [techasmt@la.gov](mailto:techasmt@la.gov)  
[www.dnr.louisiana.gov/tad](http://www.dnr.louisiana.gov/tad)

## Highlights

**AUGUST 2016**

The West Texas Intermediate (WTI) crude oil spot price is less than \$50 per barrel. On July 25, 2016, the WTI settled at \$42.40 per barrel. The high level of U.S. crude oil inventories, increased U.S. oil drilling activities, high production from OPEC (Organization of the Petroleum Exporting Countries), and the U.S. dollar appreciating against global currencies are expected to keep crude oil prices low. The recent EIA forecasts stated WTI crude oil prices will average \$44 per barrel in 2016 and \$52 per barrel in 2017. Brent crude oil prices are expected to be the same as WTI prices. The EIA said U.S. crude oil production averaged 9.4 million barrels per day in 2015, it is projecting the U.S. crude oil production to be 8.6 million barrels per day in 2016 and 8.2 million barrels per day in 2017.

## Louisiana Natural Gas & Casinghead Production\*\*, Excluding Federal OCS



## Current Oil & Gas Data

Louisiana DNR Technology Assessment Division

PRODUCTION	FEB 16	JAN 16	DEC 15	FEB 15
GOM CENTRAL FEDERAL OFFSHORE <sup>F</sup> (OCS)				
Crude Oil & Condensate (MMB)	39	46	47	37 <sup>2</sup>
Natural Gas & Casinghead (BCF)	87	95 <sup>2</sup>	98	84 <sup>2</sup>
THE UNITED STATES TOTAL				
Crude Oil & Condensate <sup>C</sup> (MMB)	266	285	287	265 <sup>2</sup>
Natural Gas & Casinghead <sup>C</sup> (BCF)	2,183	2,296 <sup>2</sup>	2,286 <sup>2</sup>	2,055 <sup>2</sup>
<b>IMPORTS</b>				
U.S. Crude Oil <sup>C</sup> (MMB)	229	238	245	199
U.S. Natural Gas <sup>C</sup> (BCF)	251	273	227	254
<b>BAKER HUGHES RIG COUNTS</b>				
U.S. Gas <sup>A</sup>	102	139	174	296
U.S. Oil <sup>A</sup>	430	515	537	1,050
U.S. Offshore <sup>A</sup>	26	27	24	52
U.S. Total <sup>A</sup>	532	654	714	1,348
<b>PRICES</b>				
CRUDE OIL (\$/barrel)				
OPEC Average <sup>C</sup> (F.O.B.)	27.01	25.02 <sup>2</sup>	29.35 <sup>2</sup>	47.31 <sup>2</sup>
U.S. Imports Average <sup>C</sup> (F.O.B.)	24.68	23.56 <sup>2</sup>	28.23 <sup>2</sup>	43.94 <sup>2</sup>
U.S. Wellhead Average <sup>C</sup>	25.51	27.02 <sup>2</sup>	32.26	44.35
Gulf OCS Wellhead Average <sup>C</sup>	26.75	30.54	35.88	46.61
State Severance Wellhead Average <sup>E</sup>	38.11	38.22	59.34	63.11
NATURAL GAS (\$/MCF)				
U.S. City Gates Average <sup>C</sup>	3.46	3.38 <sup>2</sup>	3.76	4.55
U.S. Imports Average <sup>C</sup> (F.O.B.)	2.43	2.80	2.28	5.46 <sup>2</sup>
U.S. Spot Market Average <sup>D</sup>	2.10	2.54	1.96	3.87
State Royalty Wellhead Average	1.91	2.20 <sup>2</sup>	1.86	2.82 <sup>2</sup>
NYMEX Henry Hub End of the Month Settle Gas Price <sup>B</sup> (\$/MMBTU)	2.19	2.37	2.21	2.87

### Key

### Data Sources

<b>1</b>	Estimated	<b>MCF</b>	Thousand Cubic Feet
<b>2</b>	Revised	<b>MMB</b>	Million Barrels
<b>BCF</b>	Billion Cubic Feet	<b>NA</b>	Not Available
<b>BTU</b>	British Thermal Unit	<b>OCS</b>	Outer Continental Shelf
<b>FO.B.</b>	Free on Board	<b>MMBTU</b>	Million British Thermal Units

<b>A</b>	Oil & Gas Journal	<b>D</b>	Natural Gas Week
<b>B</b>	Wall Street Journal	<b>E</b>	LA Dept of Revenue
<b>C</b>	U. S. Dept. of Energy	<b>F</b>	BOEM

**Note:** Unless otherwise specified, data is from the Louisiana Department of Natural Resources and excludes Federal OCS.

### Note from the Editors

**Louisiana Energy Facts** is published monthly by the Louisiana Department of Natural Resources, Technology Assessment Division as a public service to individuals interested in Louisiana energy activities. Content includes recent oil, gas and other energy statistics and a brief analysis of current trends.

**Louisiana Energy Facts** articles provide insight and information on subjects of special interest to our readers, and may announce relevant, forthcoming publications.

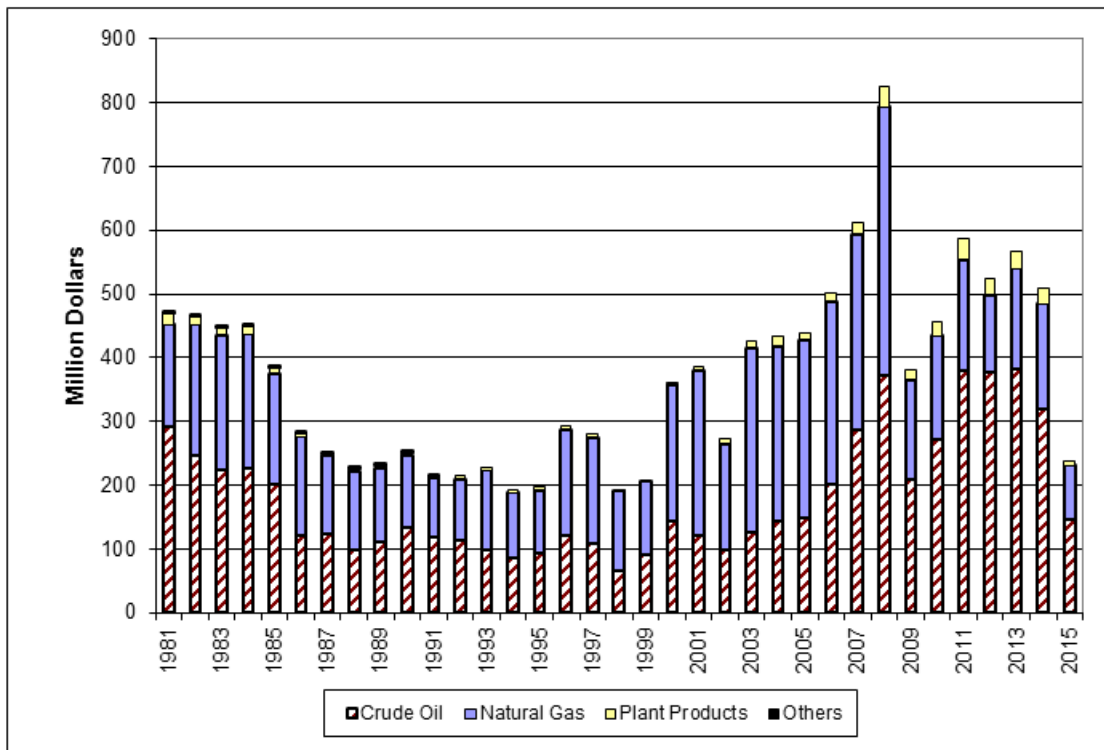
These documents are available on the Louisiana Department of Natural Resources, Technology Assessment Division home page:

<http://www.dnr.louisiana.gov/tad>. From the menu, select **Newsletters**. Our current online holdings include issues dating from 1998 through the present. If the issue you are seeking is unavailable, please contact us.

To request notification of when the **Louisiana Energy Facts** is available online, contact us at [techasmt@la.gov](mailto:techasmt@la.gov) with your name, title, company name, email address, and phone number. Please specify that you would like to be added to our email notification database for an electronic subscription.

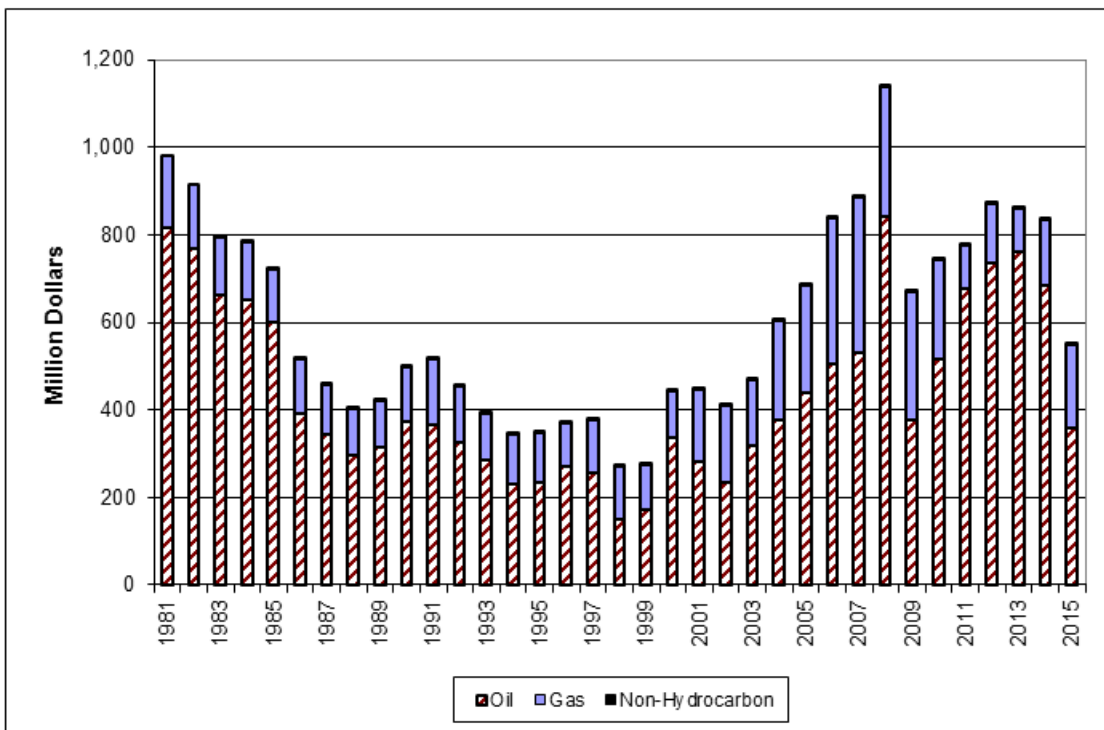
# Louisiana Mineral Royalty Revenue by Source, Excluding Federal OCS

Louisiana DNR Technology Assessment Division



# Louisiana Mineral Severance Tax Revenue by Source, Excluding Federal OCS

Louisiana DNR Technology Assessment Division





## LOUISIANA DEPARTMENT OF NATURAL RESOURCES

*Technology Assessment Division*

P. O. Box 94396

Baton Rouge, LA 70804-9396

### INSIDE

**Highlights**  
page 1

**Louisiana Natural Gas & Casinghead Production**  
page 1

**Current Oil & Gas Data**  
page 2

**Louisiana Mineral Royalty Revenue by Source**  
page 3

**Louisiana Mineral Severance Tax Revenue by Source**  
page 3

**Quick Facts**  
page 4

**Featured Articles and Inserts**  
[Louisiana, An Energy Consuming State: An Update Using 2014 Data](#)

## Quick Facts

## AUGUST 2016

Louisiana DNR Technology Assessment Division

### SPOT MARKET PRICES

	Jul 16	Jun 16	Jul 15
Louisiana Natural Gas <sup>D</sup> (\$/MMBTU)	2.74	2.29	2.76
NYMEX Henry Hub Last Settle Gas Price <sup>B</sup> (\$/MMBTU)	2.92	1.96	2.77
Louisiana Sweet Crude - St. James <sup>B</sup> (\$/Barrel)	46.54	50.59 <sup>2</sup>	54.69

### BAKER HUGHES RIG COUNTS

	Jun 16	May 16	Jun 15
North Louisiana <sup>A</sup>	15	15 <sup>2</sup>	26
South Louisiana Inland Waters <sup>A</sup>	4	4	5
South Louisiana Inland <sup>A</sup>	6	4	12
Louisiana State Offshore	0	0	0
Louisiana Federal OCS Offshore	20	22	28
Total Louisiana <sup>A</sup> (OCS included)	45	45	71

### PRODUCTION (State Jurisdiction Only)

	Jun 16	May 16	Jun 15
Louisiana Crude Oil & Condensate (MMB)	4.8 <sup>1</sup>	4.8 <sup>1</sup>	5.2 <sup>2</sup>
Louisiana Natural Gas & Casinghead (BCF)	139.5 <sup>1</sup>	141.0 <sup>1</sup>	142.7 <sup>2</sup>

### DRILLING PERMITS (State Jurisdiction Only)

	Jun 16	May 16	Jun 15
Total Louisiana Oil and Gas	35	31	69
Louisiana Wildcats	1	1	0
Louisiana Offshore (Wildcats included)	0	0	0