

LOUISIANA ENERGY FACTS

Louisiana Department of Natural Resources
Technology Assessment Division

www.dnr.louisiana.gov/tad

INSIDE

Highlights
page 1

**Louisiana Monthly
Crude Oil &
Condensate Production**
page 1

Current Oil & Gas Data
page 2

**Louisiana Natural Gas
Production from Incapable
Oil and Gas Wells**
page 3

**Louisiana Crude Oil
Production from
Stripper Wells**
page 3

Quick Facts
page 4

**Featured Articles
and Inserts**
[Selected Louisiana
Energy Statistics](#)



Department of Natural
Resources

Thomas Harris, Secretary

Technology Assessment
Division

Paul Miller, Director
Manuel Lam, Senior Analyst

617 North Third Street
Baton Rouge, LA 70802

Tel. (225) 342-1270
Fax. (225) 242-1397
Email: techasmt@la.gov
www.dnr.louisiana.gov/tad

Highlights

JULY 2017

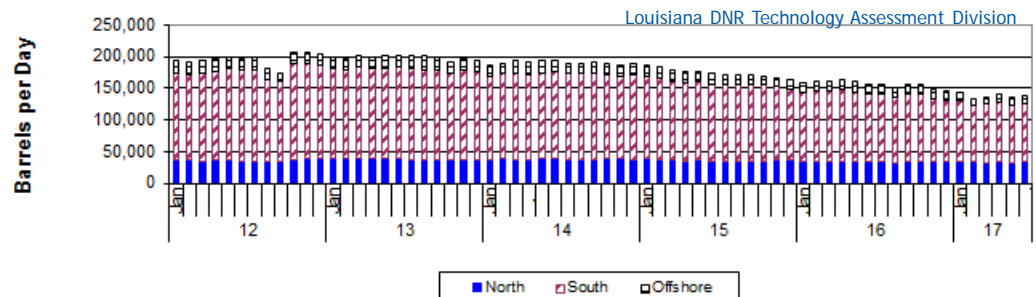
Louisiana natural gas June average spot wellhead price was \$2.87/MMBTU, \$0.28 less than last month and \$0.58 more than June 2016 average. The U.S. Energy Information Administration (EIA), in its June Short Term Energy Outlook, expects Henry Hub spot prices to hold a bit above current levels this summer, averaging \$3.14/MMBTU during the second quarter and \$3.20/MMBTU in the third quarter. The EIA sees a \$3.16/MMBTU price for all of 2017, rising to \$3.41/MMBTU in 2018. The EIA reported an injection of 46 BCF for the week ended June 23, 2017, bringing the volume of working gas in storage to 2,816 BCF. The storage volume was 319 BCF lower than last year, but it was 181 BCF above the five-year average.

Louisiana Monthly Crude Oil & Condensate Production**, Excluding Federal OCS

Month	(Barrels/Day)						% Change	
	2012	2013	2014	2015	2016	2017	15/16	16/17
January	192,951	199,020	184,399 ²	184,614 ²	156,569 ²	141,692		-9.50%
February	189,953	195,357 ²	188,542 ²	183,851 ²	160,996 ²	129,436		-19.60%
March	192,705	199,682	193,664 ²	177,658 ²	160,858 ²	137,361 ¹		-14.61%
April	194,865	197,259	190,259 ²	175,266 ²	161,472 ²	139,831 ¹		-13.40%
May	198,074	199,939	192,486 ²	175,283 ²	158,947 ²	134,083 ¹		-15.64%
June	194,467	201,326	193,778 ²	172,226 ²	155,805 ²	136,563 ¹		-12.35%
July	198,065	199,751	187,997 ²	169,061 ²	154,301 ²		-8.73%	
August	179,086	199,333	189,138 ²	169,145 ²	148,825 ²		-12.01%	
September	173,045	197,901	189,164 ²	170,987 ²	154,570 ²		-9.60%	
October	206,264	191,332	188,548 ²	168,469 ²	153,738 ²		-8.74%	
November	206,057	194,372	185,259 ²	166,286 ²	146,310 ²		-12.01%	
December	203,455	192,847	187,379 ²	163,060 ²	143,840 ²		-11.79%	
Year Average	194,082	197,343²	189,218²	172,992²	154,686²	136,494[*]		

* Partial Year

**All data are revised; see July 2001 statistic changes explanation



Current Oil & Gas Data

Louisiana DNR Technology Assessment Division

	JAN 17	DEC 16	NOV 16	JAN 16
PRODUCTION				
GOM CENTRAL FEDERAL OFFSHORE ^F (OCS)				
Crude Oil & Condensate (MMB)	47	48	47	46
Natural Gas & Casinghead (BCF)	91	93 ²	89	95 ²
THE UNITED STATES TOTAL				
Crude Oil & Condensate ^C (MMB)	274	272	266	285
Natural Gas & Casinghead ^C (BCF)	2,192	2,205	2,153	2,275 ²
IMPORTS				
U.S. Crude Oil ^C (MMB)	261	244	242	238
U.S. Natural Gas ^C (BCF)	289	279	231	274 ²
BAKER HUGHES RIG COUNTS				
U.S. Gas ^A	140	126	117	139
U.S. Oil ^A	542	503	462	515
U.S. Offshore ^A	24	23	22	27
U.S. Total ^A	683	634	580	654
PRICES				
CRUDE OIL (\$/barrel)				
OPEC Average ^C (F.O.B.)	42.27	47.44 ²	42.31 ²	25.05 ²
U.S. Imports Average ^C (F.O.B.)	44.61	44.52 ²	40.12 ²	23.56 ²
U.S. Wellhead Average ^C	48.19	47.12	41.65	27.02
Gulf OCS Wellhead Average ^C	47.67	44.96	43.22	30.54
State Severance Wellhead Average ^E	N/A	49.33 ²	43.26 ²	38.22
NATURAL GAS (\$/MCF)				
U.S. City Gates Average ^C	4.22	3.95	3.89	3.40 ²
U.S. Imports Average ^C (F.O.B.)	3.75	3.50	2.70	2.80
U.S. Spot Market Average ^D	3.67	3.38 ²	2.30	2.54
State Royalty Wellhead Average	3.50	3.40 ²	2.46 ²	2.20 ²
NYMEX Henry Hub End of the Month Settle Gas Price ^B (\$/MMBTU)	3.93	3.23	2.76	2.37

Key

Data Sources

1	Estimated	MCF	Thousand Cubic Feet
2	Revised	MMB	Million Barrels
BCF	Billion Cubic Feet	N/A	Not Available
BTU	British Thermal Unit	OCS	Outer Continental Shelf
F.O.B.	Free on Board	MMBTU	Million British Thermal Units

A	Oil & Gas Journal	D	Natural Gas Week
B	Wall Street Journal	E	LA Dept of Revenue
C	U. S. Dept. of Energy	F	BOEM

Note: Unless otherwise specified, data is from the Louisiana Department of Natural Resources and excludes Federal OCS.

Note from the Editors

Louisiana Energy Facts is published monthly by the Louisiana Department of Natural Resources, Technology Assessment Division as a public service to individuals interested in Louisiana energy activities. Content includes recent oil, gas and other energy statistics and a brief analysis of current trends.

Louisiana Energy Facts articles provide insight and information on subjects of special interest to our readers, and may announce relevant, forthcoming publications.

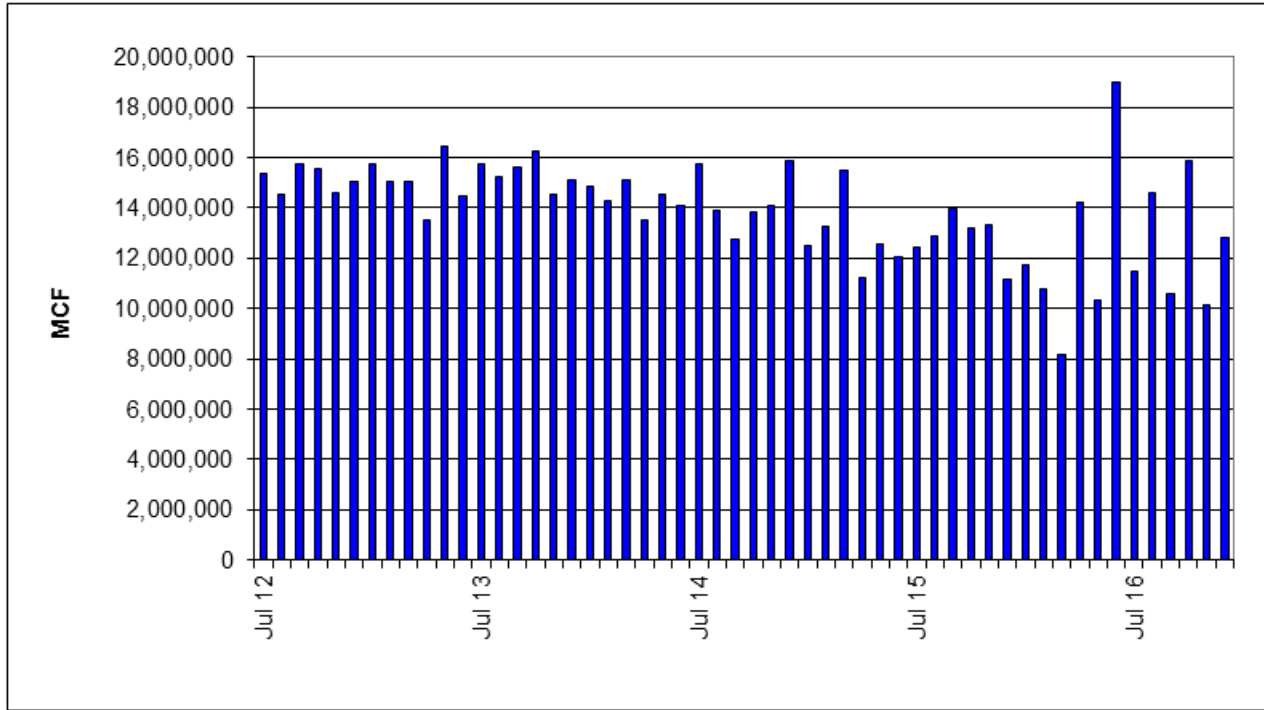
These documents are available on the Louisiana Department of Natural Resources, Technology Assessment Division home page:

<http://www.dnr.louisiana.gov/tad>. From the menu, select **Newsletters**. Our current online holdings include issues dating from 1998 through the present. If the issue you are seeking is unavailable, please contact us.

To request notification of when the *Louisiana Energy Facts* is available online, contact us at techasmt@la.gov with your name, title, company name, email address, and phone number. Please specify that you would like to be added to our email notification database for an electronic subscription.

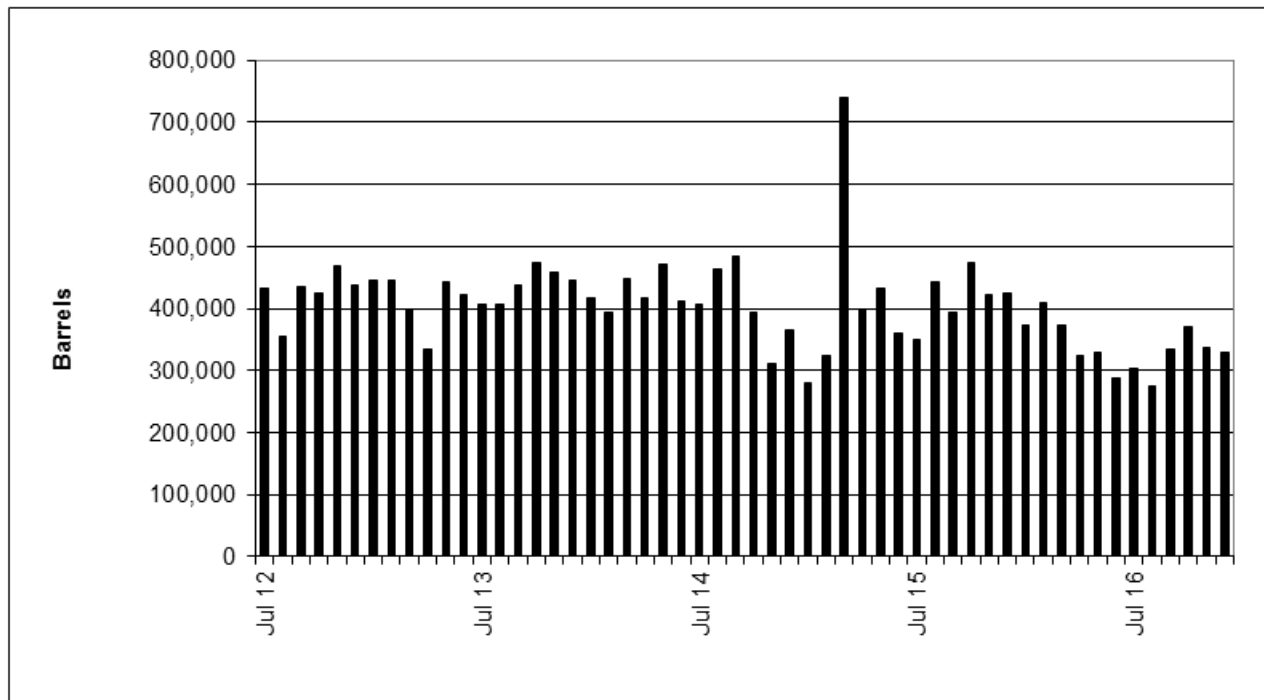
Louisiana Natural Gas Production from Incapable Oil and Gas Wells^E

Louisiana DNR Technology Assessment Division



Louisiana Crude Oil Production from Stripper Wells^E

Louisiana DNR Technology Assessment Division





LOUISIANA DEPARTMENT OF NATURAL RESOURCES

Technology Assessment Division

P. O. Box 94396

Baton Rouge, LA 70804-9396

INSIDE

Highlights
page 1

**Louisiana Monthly
Crude Oil &
Condensate Production**
page 1

Current Oil & Gas Data
page 2

**Louisiana Natural Gas
Production from Incapable
Oil and Gas Wells**
page 3

**Louisiana Crude Oil
Production from
Stripper Wells**
page 3

Quick Facts
page 4

**Featured Articles
and Inserts**
[Selected Louisiana
Energy Statistics](#)

Quick Facts

JULY 2017

Louisiana DNR Technology Assessment Division

SPOT MARKET PRICES

	Jun 17	May 17	Jun 16
Louisiana Natural Gas ^D (\$/MMBTU)	2.87	3.15 ²	2.29
NYMEX Henry Hub Last Settle Gas Price ^B (\$/MMBTU)	3.24	3.14	1.96
Louisiana Sweet Crude - St. James (\$/Barrel)	47.21	50.55	50.62 ²

BAKER HUGHES RIG COUNTS

	May 17	Apr 17	May 16
North Louisiana ^A	37	33	25 ²
South Louisiana Inland Waters ^A	4	3	4
South Louisiana Inland ^A	2	3	4
Louisiana State Offshore	0	1	0
Louisiana Federal OCS Offshore	20	19	22
Total Louisiana ^A (OCS included)	63	59	45

PRODUCTION (State Jurisdiction Only)

	May 17	Apr 17	May 16
Louisiana Crude Oil & Condensate (MMB)	4.2 ¹	4.2 ¹	4.9 ¹
Louisiana Natural Gas & Casinghead (BCF)	132.8 ¹	133.4 ¹	145.5 ¹

DRILLING PERMITS (State Jurisdiction Only)

	May 17	Apr 17	May 16
Total Louisiana Oil and Gas	52	55	31
Louisiana Wildcats	1	0	1
Louisiana Offshore (Wildcats included)	0	0	0