

# LOUISIANA ENERGY FACTS

Louisiana Department of Natural Resources  
Technology Assessment Division

[www.dnr.louisiana.gov/tad](http://www.dnr.louisiana.gov/tad)

## INSIDE

**Highlights**  
page 1

**Louisiana Natural Gas & Casinghead Production**  
page 1

**Current Oil & Gas Data**  
page 2

**Louisiana Mineral Royalty Revenue by Source**  
page 3

**Louisiana Mineral Severance Tax Revenue by Source**  
page 3

**Quick Facts**  
page 4

### Featured Articles and Inserts

[Louisiana, An Energy Consuming State: An Update Using 2015 Data](#)



Department of Natural Resources

Thomas Harris, Secretary

Technology Assessment Division

Paul Miller, Director  
Manuel Lam, Senior Analyst

617 North Third Street  
Baton Rouge, LA 70802

Tel. (225) 342-1270  
Fax. (225) 242-1397  
Email: [techasmt@la.gov](mailto:techasmt@la.gov)  
[www.dnr.louisiana.gov/tad](http://www.dnr.louisiana.gov/tad)

## Highlights

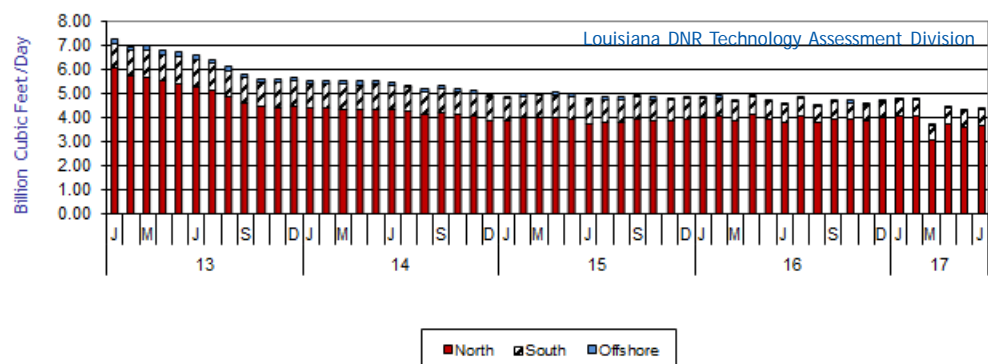
## AUGUST 2017

West Texas Intermediate (WTI) crude oil spot price is less than \$50 per barrel. On July 25, 2017, WTI settled at \$47.89 per barrel. The recent EIA forecasts expects WTI prices to average \$48.95 per barrel in 2017, with the second half of 2017 averaging \$50 per barrel, and \$49.58 per barrel in 2018. Brent crude prices are expected to have a premium as compared to WTI prices, seeing \$50.79 in 2017, and expecting to average \$51.58 in 2018. The EIA has an optimistic outlook for the end of 2018, with the second half of the year seeing some upward price pressure due to possible supply constraints compared to global demand. The most uncertainty dealing with supply, and ultimately price, remains with OPEC and the volume cuts that have been in place during the first half of the year.

### Louisiana Natural Gas & Casinghead Production\*\*, Excluding Federal OCS

Month	(Billion Cubic Feet/Day)						% Change	
	2012	2013	2014	2015	2016	2017	15/16	16/17
January	8.61	7.26	5.51	4.86 <sup>2</sup>	4.84 <sup>2</sup>	4.74		-1.98%
February	8.47 <sup>2</sup>	6.93	5.51	4.99 <sup>2</sup>	4.88 <sup>2</sup>	4.78		-2.11%
March	8.12	6.94	5.50	4.99 <sup>2</sup>	4.71 <sup>2</sup>	3.70		-21.51%
April	8.03	6.76	5.47	5.02 <sup>2</sup>	4.93 <sup>2</sup>	4.45		-9.74%
May	8.11	6.68	5.51	4.97 <sup>2</sup>	4.69 <sup>2</sup>	4.28 <sup>1</sup>		-8.70%
June	8.33	6.54	5.45	4.78 <sup>2</sup>	4.57 <sup>2</sup>	4.35 <sup>1</sup>		-4.79%
July	8.39	6.38	5.29	4.82 <sup>2</sup>	4.85 <sup>2</sup>		0.71%	
August	8.21	6.10	5.19	4.81 <sup>2</sup>	4.51 <sup>2</sup>		-6.16%	
September	8.06	5.80	5.27	4.91 <sup>2</sup>	4.67 <sup>2</sup>		-4.81%	
October	7.99	5.56	5.16	4.81 <sup>2</sup>	4.67 <sup>2</sup>		-2.90%	
November	7.69	5.59	5.11	4.79 <sup>2</sup>	4.55 <sup>2</sup>		-5.02%	
December	7.49	5.62	4.93	4.84 <sup>2</sup>	4.68 <sup>2</sup>		-3.40%	
<b>Year Average</b>	<b>8.12<sup>2</sup></b>	<b>6.35</b>	<b>5.33</b>	<b>4.88<sup>2</sup></b>	<b>4.71<sup>2</sup></b>	<b>4.38<sup>**</sup></b>		

\*\* Partial Year



## Current Oil & Gas Data

Louisiana DNR Technology Assessment Division

PRODUCTION	FEB 17	JAN 17	DEC 16	FEB 16
GOM CENTRAL FEDERAL OFFSHORE <sup>F</sup> (OCS)				
Crude Oil & Condensate (MMB)	42	50 <sup>2</sup>	50 <sup>2</sup>	42 <sup>2</sup>
Natural Gas & Casinghead (BCF)	78	92 <sup>2</sup>	94 <sup>2</sup>	88 <sup>2</sup>
THE UNITED STATES TOTAL				
Crude Oil & Condensate <sup>C</sup> (MMB)	253	274	272	265 <sup>2</sup>
Natural Gas & Casinghead <sup>C</sup> (BCF)	2,019	2,192	2,205	2,164 <sup>2</sup>
<b>IMPORTS</b>				
U.S. Crude Oil <sup>C</sup> (MMB)	221	261	244	229
U.S. Natural Gas <sup>C</sup> (BCF)	253	289	279	252 <sup>2</sup>
<b>BAKER HUGHES RIG COUNTS</b>				
U.S. Gas <sup>A</sup>	150	140	126	102
U.S. Oil <sup>A</sup>	593	542	507 <sup>2</sup>	430
U.S. Offshore <sup>A</sup>	20	24	23	26
U.S. Total <sup>A</sup>	744	683	634	532
<b>PRICES</b>				
CRUDE OIL (\$/barrel)				
OPEC Average <sup>C</sup> (F.O.B.)	48.98	42.27	47.44	27.01
U.S. Imports Average <sup>C</sup> (F.O.B.)	46.18	44.61	44.52	24.68
U.S. Wellhead Average <sup>C</sup>	49.41	48.19	47.12	25.51
Gulf OCS Wellhead Average <sup>C</sup>	48.97	47.67	44.96	26.75
State Severance Wellhead Average <sup>E</sup>	53.14	41.63	48.84	38.11
NATURAL GAS (\$/MCF)				
U.S. City Gates Average <sup>C</sup>	4.10	4.22	3.95	3.48 <sup>2</sup>
U.S. Imports Average <sup>C</sup> (F.O.B.)	3.14	3.75	3.50	2.43
U.S. Spot Market Average <sup>D</sup>	2.98	3.67	3.38	2.10
State Royalty Wellhead Average	3.00	3.50	3.40	1.90 <sup>2</sup>
NYMEX Henry Hub End of the Month Settle Gas Price <sup>B</sup> (\$/MMBTU)	3.39	3.93	3.23	2.19

### Key

### Data Sources

<b>1</b>	Estimated	<b>MCF</b>	Thousand Cubic Feet
<b>2</b>	Revised	<b>MMB</b>	Million Barrels
<b>BCF</b>	Billion Cubic Feet	<b>NA</b>	Not Available
<b>BTU</b>	British Thermal Unit	<b>OCS</b>	Outer Continental Shelf
<b>FO.B.</b>	Free on Board	<b>MMBTU</b>	Million British Thermal Units

<b>A</b>	Oil & Gas Journal	<b>D</b>	Natural Gas Week
<b>B</b>	Wall Street Journal	<b>E</b>	LA Dept of Revenue
<b>C</b>	U. S. Dept. of Energy	<b>F</b>	BOEM

**Note:** Unless otherwise specified, data is from the Louisiana Department of Natural Resources and excludes Federal OCS.

### Note from the Editors

*Louisiana Energy Facts* is published monthly by the Louisiana Department of Natural Resources, Technology Assessment Division as a public service to individuals interested in Louisiana energy activities. Content includes recent oil, gas and other energy statistics and a brief analysis of current trends.

*Louisiana Energy Facts* articles provide insight and information on subjects of special interest to our readers, and may announce relevant, forthcoming publications.

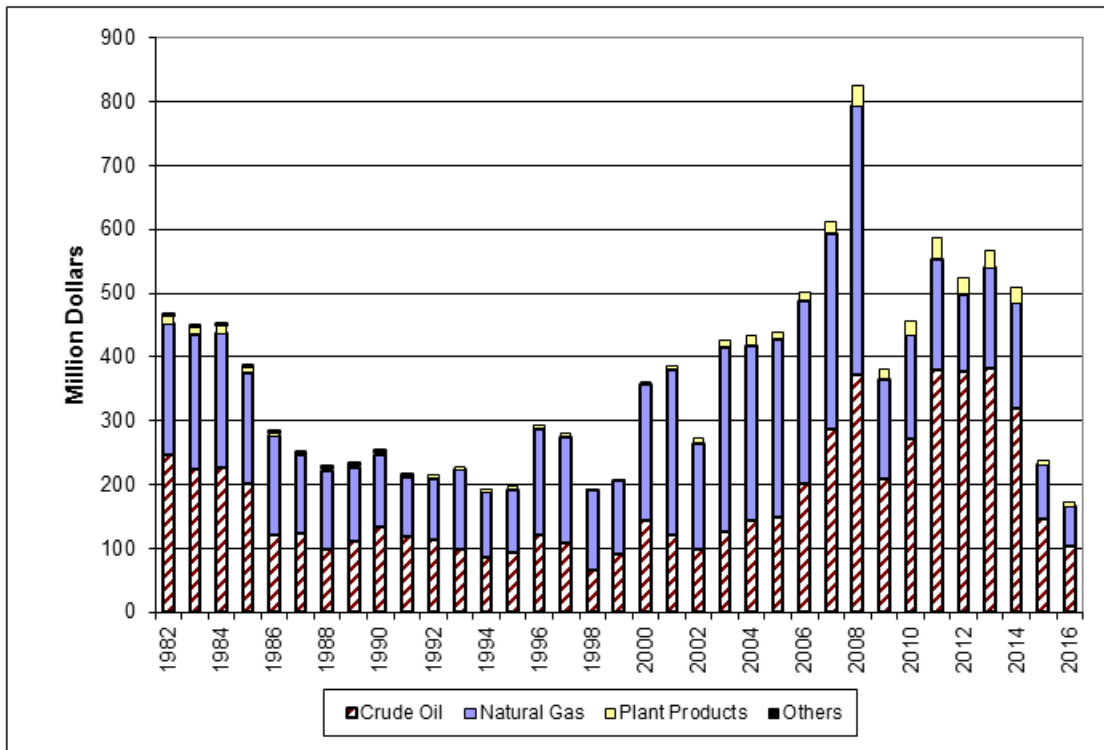
These documents are available on the Louisiana Department of Natural Resources, Technology Assessment Division home page:

<http://www.dnr.louisiana.gov/tad>. From the menu, select **Newsletters**. Our current online holdings include issues dating from 1998 through the present. If the issue you are seeking is unavailable, please contact us.

To request notification of when the *Louisiana Energy Facts* is available online, contact us at [techasmt@la.gov](mailto:techasmt@la.gov) with your name, title, company name, email address, and phone number. Please specify that you would like to be added to our email notification database for an electronic subscription.

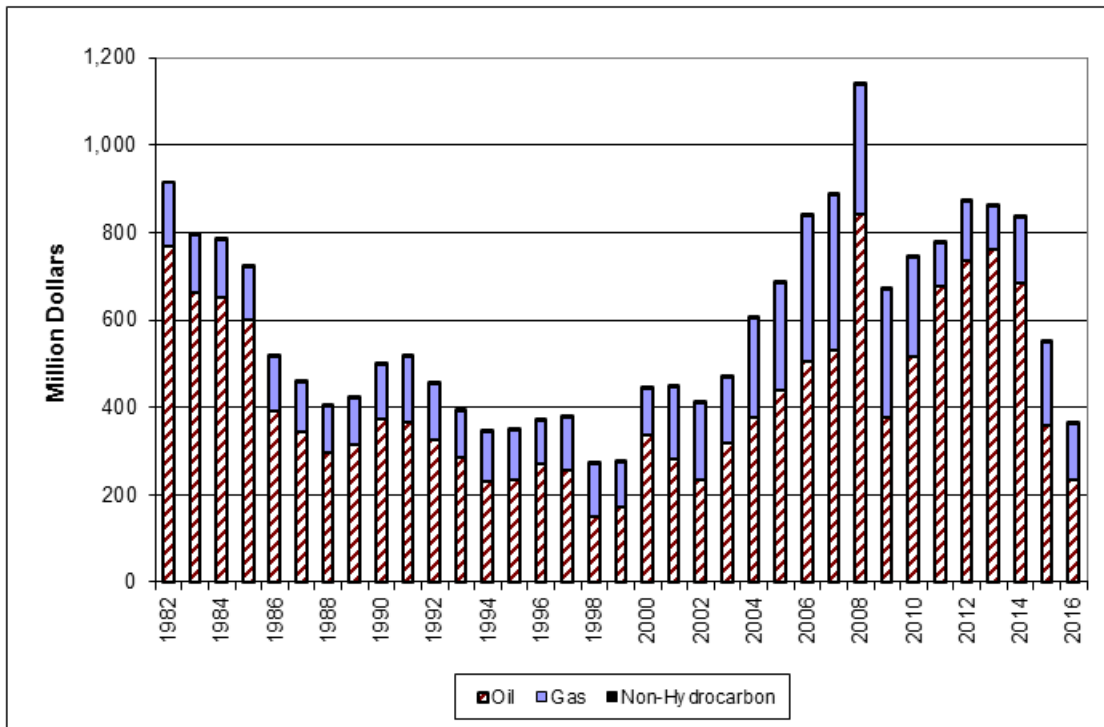
# Louisiana Mineral Royalty Revenue by Source, Excluding Federal OCS

Louisiana DNR Technology Assessment Division



# Louisiana Mineral Severance Tax Revenue by Source, Excluding Federal OCS

Louisiana DNR Technology Assessment Division





LOUISIANA DEPARTMENT OF NATURAL RESOURCES

Technology Assessment Division

P. O. Box 94396

Baton Rouge, LA 70804-9396

**INSIDE**

**Highlights**  
page 1

**Louisiana Natural Gas & Casinghead Production**  
page 1

**Current Oil & Gas Data**  
page 2

**Louisiana Mineral Royalty Revenue by Source**  
page 3

**Louisiana Mineral Severance Tax Revenue by Source**  
page 3

**Quick Facts**  
page 4

**Featured Articles and Inserts**  
[Louisiana, An Energy Consuming State: An Update Using 2015 Data](#)

**Quick Facts**

**AUGUST 2017**

Louisiana DNR Technology Assessment Division

	<b>Jul 17</b>	<b>Jun 17</b>	<b>Jul 16</b>
<b>SPOT MARKET PRICES</b>			
Louisiana Natural Gas <sup>D</sup> (\$/MMBTU)	2.92	2.87	2.74
NYMEX Henry Hub Last Settle Gas Price <sup>B</sup> (\$/MMBTU)	3.07	3.24	2.92
Louisiana Sweet Crude - St. James <sup>B</sup> (\$/Barrel)	48.61	47.21	46.41
<b>BAKER HUGHES RIG COUNTS</b>			
	<b>Jun 17</b>	<b>May 17</b>	<b>Jun 16</b>
North Louisiana <sup>A</sup>	39	37	15
South Louisiana Inland Waters <sup>A</sup>	4	4	4
South Louisiana Inland <sup>A</sup>	1	2	6
Louisiana State Offshore	0	0	0
Louisiana Federal OCS Offshore	21	20	20
Total Louisiana <sup>A</sup> (OCS included)	65	63	45
<b>PRODUCTION (State Jurisdiction Only)</b>			
	<b>Jun 17</b>	<b>May 17</b>	<b>Jun 16</b>
Louisiana Crude Oil & Condensate (MMB)	4.2 <sup>1</sup>	4.3 <sup>1</sup>	4.7 <sup>2</sup>
Louisiana Natural Gas & Casinghead (BCF)	141.4 <sup>1</sup>	142.0 <sup>1</sup>	137.0 <sup>2</sup>
<b>DRILLING PERMITS (State Jurisdiction Only)</b>			
	<b>Jun 17</b>	<b>May 17</b>	<b>Jun 16</b>
Total Louisiana Oil and Gas	75	52	35
Louisiana Wildcats	1	1	1
Louisiana Offshore (Wildcats included)	0	0	0