

LOUISIANA ENERGY FACTS

Louisiana Department of Natural Resources
Technology Assessment Division

www.dnr.louisiana.gov/tad

INSIDE

Highlights
page 1

**Louisiana Monthly
Crude Oil &
Condensate Production**
page 1

Current Oil & Gas Data
page 2

**Louisiana Natural Gas
Production from Incapable
Oil and Gas Wells**
page 3

**Louisiana Crude Oil
Production from
Stripper Wells**
page 3

Quick Facts
page 4

**Featured Articles
and Inserts**
[Selected Louisiana
Energy Statistics](#)



Department of Natural
Resources

Thomas Harris, Secretary

Technology Assessment
Division

Jason Lanclos, Director
Edward O'Brien, Economist

617 North Third Street
Baton Rouge, LA 70802

Tel. (225) 342-1270
Fax. (225) 242-1397
Email: techasmt@la.gov
www.dnr.louisiana.gov/tad

Highlights JULY 2020

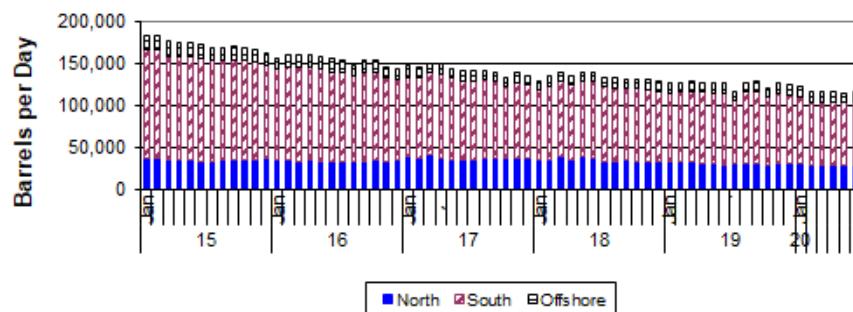
Louisiana natural gas June average spot wellhead price was \$1.58/MMBTU, 10¢ less than last month and 76¢ less than June 2019 average. The US Energy Information Administration (EIA), in its June Short-Term Energy Outlook, expects Henry Hub spot prices to level off. The EIA sees a \$1.93/MMBTU price for full-year 2020, and increasing to \$3.10 in 2021. The EIA reported an injection of 65 BCF as of June 26, bringing the volume of working gas in storage to 3,077 BCF. The storage volume was 712 BCF higher than last year, and it was 466 BCF higher than five-year average.

Louisiana Monthly Crude Oil & Condensate Production**, Excluding Federal OCS

Month	(Barrels/Day)						% Change	
	2015	2016	2017	2018	2019	2020	18/19	19/20
January	184,649	156,561	147,112	128,207	126,835	123,149		-2.91%
February	183,853	161,005	146,554	134,655	127,717	116,678		-8.64%
March	177,652	160,912	150,909	139,723	128,781	116,195		-9.77%
April	175,262	161,545	149,463	135,486	126,915	117,047 ¹		-7.78%
May	175,280	158,990	144,160	140,331	126,113	114,441 ¹		-9.26%
June	172,234	155,826	140,710	139,059	126,174	115,633 ¹		-8.35%
July	169,042	154,328	140,982	133,622	115,703		#####	
August	169,137	148,939	141,247	132,764	127,284		-4.13%	
September	170,981	154,565	139,503	132,086	128,717		-2.55%	
October	168,451	153,819	132,572	131,884	120,925		-8.31%	
November	166,277	146,454	138,872	130,848	126,923		-3.00%	
December	163,081	144,247	135,732	129,012	124,537		-3.47%	
Year Average	172,992	154,766	142,318	133,973²	125,552			

* Partial Year

**All data are revised; see July 2001 statistic changes explanation



Louisiana DNR Technology Assessment Division

Current Oil & Gas Data

Louisiana DNR Technology Assessment Division

	JAN 20	DEC 19	NOV 19	JAN 19
PRODUCTION				
GOM CENTRAL FEDERAL OFFSHORE ^F (OCS)				
Crude Oil & Condensate (MMB)	58	59	57	57
Natural Gas & Casinghead (BCF)	81	81	78	85
THE UNITED STATES TOTAL				
Crude Oil & Condensate ^C (MMB)	395	397	386	368
Natural Gas & Casinghead ^C (BCF)	3,173	3,194	3,103	2,955
IMPORTS				
U.S. Crude Oil ^C (MMB)	199	212	174	233
U.S. Natural Gas ^C (BCF)	262	256	221	291
BAKER HUGHES RIG COUNTS				
U.S. Gas ^A	118	128	130	199
U.S. Oil ^A	674	676	680	866
U.S. Offshore ^A	20	23	22	21
U.S. Total ^A	791	804	810	1,065
PRICES				
CRUDE OIL (\$/barrel)				
OPEC Average ^C (F.O.B.)	53.02	63.52	60.79	55.22
U.S. Imports Average ^C (F.O.B.)	46.98	51.57	51.80	48.72
U.S. Wellhead Average ^C	56.86	58.41	54.96	47.85
Gulf OCS Wellhead Average ^C	57.52	58.63	55.13	54.13
State Severance Wellhead Average ^E	63.57	63.94	62.62	56.29
NATURAL GAS (\$/MCF)				
U.S. City Gates Average ^C	3.27	3.49	3.44	4.09
U.S. Imports Average ^C (F.O.B.)	2.92	3.23	2.80	4.30
U.S. Spot Market Average ^D	2.08	2.40	2.52	3.46
State Royalty Wellhead Average	1.93	2.19	2.35	3.20
NYMEX Henry Hub End of the Month Settle Gas Price ^B (\$/MMBTU)	2.16	2.47	2.58	3.64

Key

Data Sources

1	Estimated	MCF	Thousand Cubic Feet
2	Revised	MMB	Million Barrels
BCF	Billion Cubic Feet	NA	Not Available
BTU	British Thermal Unit	OCS	Outer Continental Shelf
FO.B.	Free on Board	MMBTU	Million British Thermal Units

A	Oil & Gas Journal	D	Natural Gas Week
B	Wall Street Journal	E	LA Dept of Revenue
C	U. S. Dept. of Energy	F	BOEM

Note: Unless otherwise specified, data is from the Louisiana Department of Natural Resources and excludes Federal OCS.

Note from the Editors

Louisiana Energy Facts is published monthly by the Louisiana Department of Natural Resources, Technology Assessment Division as a public service to individuals interested in Louisiana energy activities. Content includes recent oil, gas and other energy statistics and a brief analysis of current trends.

Louisiana Energy Facts articles provide insight and information on subjects of special interest to our readers, and may announce relevant, forthcoming publications.

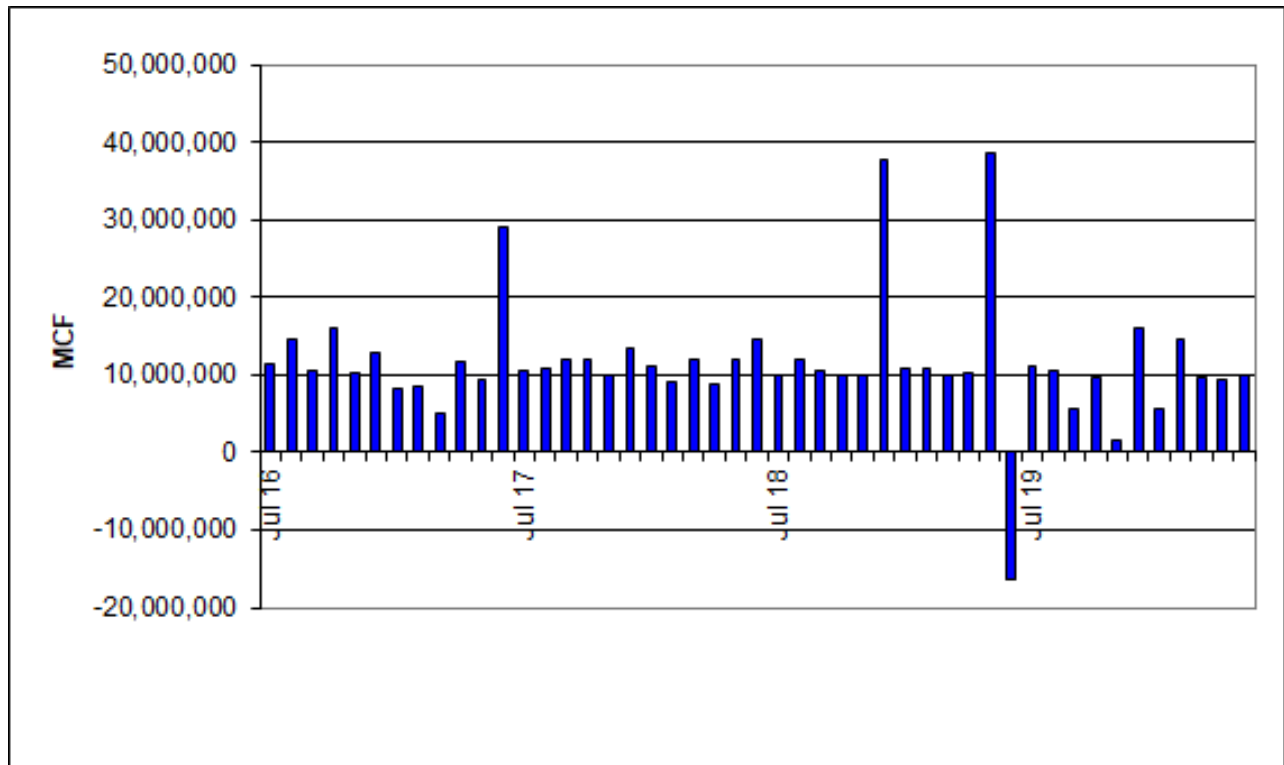
These documents are available on the Louisiana Department of Natural Resources, Technology Assessment Division home page:

<http://www.dnr.louisiana.gov/tad>. From the menu, select **Newsletters**. Our current online holdings include issues dating from 1998 through the present. If the issue you are seeking is unavailable, please contact us.

To request notification of when the **Louisiana Energy Facts** is available online, contact us at techasmt@la.gov with your name, title, company name, email address, and phone number. Please specify that you would like to be added to our email notification database for an electronic subscription.

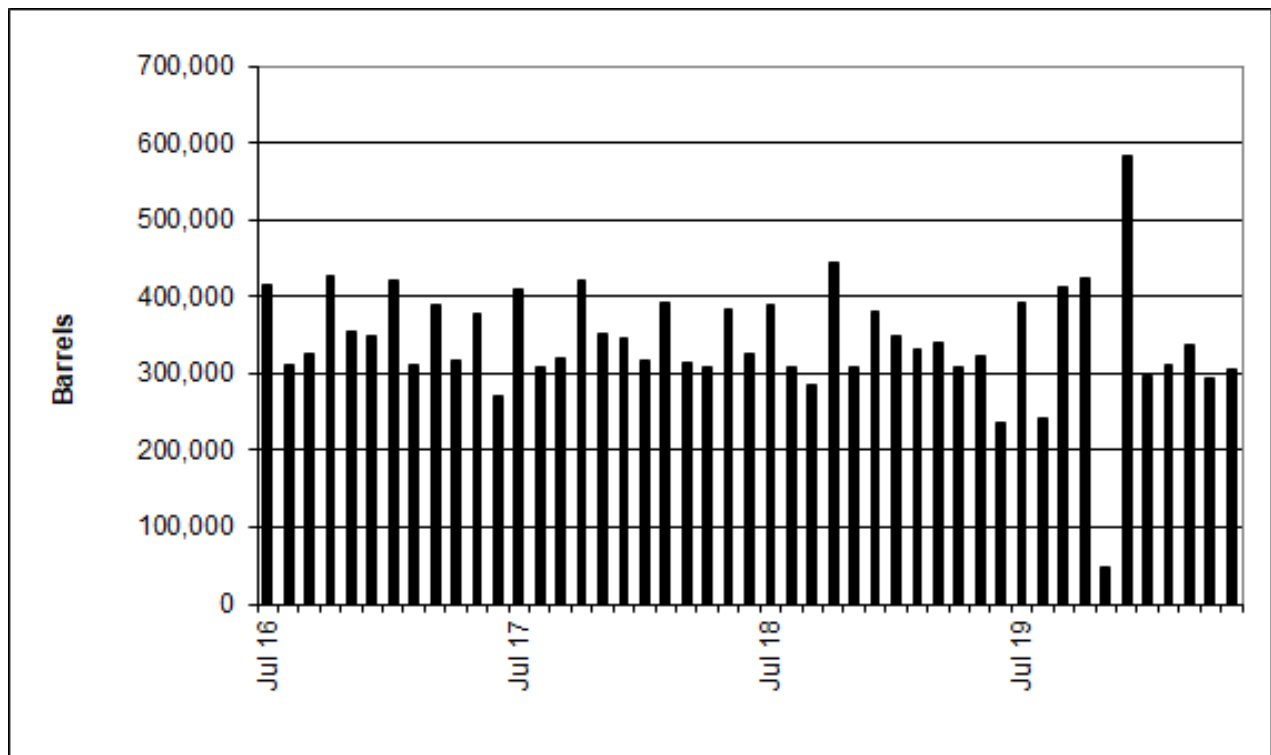
Louisiana Natural Gas Production from Incapable Oil and Gas Wells^E

Louisiana DNR Technology Assessment Division



Louisiana Crude Oil Production from Stripper Wells^E

Louisiana DNR Technology Assessment Division





LOUISIANA DEPARTMENT OF NATURAL RESOURCES

Technology Assessment Division

P. O. Box 94396

Baton Rouge, LA 70804-9396

INSIDE

Highlights
page 1

**Louisiana Monthly
Crude Oil &
Condensate Production**
page 1

Current Oil & Gas Data
page 2

**Louisiana Natural Gas
Production from Incapable
Oil and Gas Wells**
page 3

**Louisiana Crude Oil
Production from
Stripper Wells**
page 3

Quick Facts
page 4

**Featured Articles
and Inserts**
[Selected Louisiana
Energy Statistics](#)

Quick Facts

JULY 2020

Louisiana DNR Technology Assessment Division

SPOT MARKET PRICES

	Jun 20	May 20	Jun 19
Louisiana Natural Gas ^D (\$/MMBTU)	1.58	1.68	2.19
NYMEX Henry Hub Last Settle Gas Price ^B (\$/MMBTU)	1.58	1.72	2.34
Louisiana Sweet Crude - St. James (\$/Barrel)	39.48	31.44	61.30

BAKER HUGHES RIG COUNTS

	May 20	Apr 20	May 19
North Louisiana ^A	22	24	35
South Louisiana Inland Waters ^A	0	0	4
South Louisiana Inland ^A	1	1	4
Louisiana State Offshore	0	0	1
Louisiana Federal OCS Offshore	13	17	19
Total Louisiana ^A (OCS included)	36	42	63

PRODUCTION (State Jurisdiction Only)

	May 20	Apr 20	May 19
Louisiana Crude Oil & Condensate (MMB)	3.5 ¹	3.5 ¹	3.9 ²
Louisiana Natural Gas & Casinghead (BCF)	242.6 ¹	239.3 ¹	263.7 ²

DRILLING PERMITS (State Jurisdiction Only)

	May 20	Apr 20	May 19
Total Louisiana Oil and Gas	22	25	64
Louisiana Wildcats	0	0	1
Louisiana Offshore (Wildcats included)	0	0	0