

LOUISIANA ENERGY FACTS

Louisiana Department of Natural Resources
Technology Assessment Division

www.dnr.louisiana.gov/tad

JUNE 2020

INSIDE

Highlights
page 1

Louisiana Average Active Rigs in Areas Under State Jurisdiction
page 1

Current Oil & Gas Data
page 2

Louisiana Non-Agricultural Employment
page 3

Quick Facts
page 4



Department of Natural Resources
Thomas Harris, Secretary

Technology Assessment Division
Jason Lanclos, Director
Edward O'Brien, Economist
617 North Third Street
Baton Rouge, LA 70802

Tel. (225) 342-1270
Fax. (225) 242-1397
Email: techasmt@la.gov
www.dnr.louisiana.gov/tad

Highlights

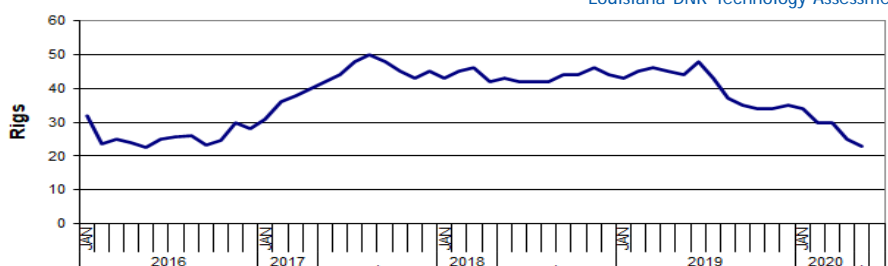
Natural Gas NYMEX June contract price closed at \$1.72 MMBTU. It was \$0.07 lower than May, or 3.9%, and \$0.92 lower than June 2019 contract price, a decrease of 34.6%. The low price is due the influx of natural gas currently in the system coupled with the decrease in demand during the COVID-19 outbreak. Working gas in storage was 2,612 BCF as of Friday, May 22, 2020, according to EIA estimates. This represents a net increase of 109 BCF from the previous week. Stocks were 778 BCF higher than last year at this time and 423 BCF above the five-year average of 2,189 BCF. At 2,189 BCF, total working gas is within the five-year historical range. The May 2020, Baker Hughes report showed gas-directed rigs in the US were down by fourteen, bringing the total to 79, from the previous month and 57.0% lower than May 2019.

Louisiana Average Active Rigs in Areas Under State Jurisdiction

Month	Louisiana Average Active Rigs in Areas Under State Jurisdiction (Monthly Average)						% Change	
	2015	2016	2017	2018	2019	2020	18/19	19/20
January	59	32	31	43	43	34		-20.93%
February	59	24	36	45	45	30		-33.33%
March	45	25	38	46	46	30		-34.78%
April	40	24	40	42	45	25		-44.44%
May	40	23	42	43	44	23	2.33%	-47.73%
June	43	25	44	42	48		14.29%	
July	43	26	48	42	43		2.38%	
August	45	26	50	42	37		-11.90%	
September	42	23	48	44	35		-20.45%	
October	37	25	45	44	34		-22.73%	
November	37	30	43	46	34		-26.09%	
December	38	28	45	44	35		-20.45%	
Year Average	44	26	42	44	45	28*		

* Partial Year

Louisiana DNR Technology Assessment Division



Current Oil & Gas Data

Louisiana DNR Technology Assessment Division

PRODUCTION	DEC 19	NOV 19	OCT 19	DEC 18
GOM CENTRAL FEDERAL OFFSHORE^F (OCS)				
Crude Oil & Condensate (MMB)	56	56	56	57
Natural Gas & Casinghead (BCF)	81	78	82	83
THE UNITED STATES TOTAL				
Crude Oil & Condensate ^C (MMB)	397	386	361	373
Natural Gas & Casinghead ^C (BCF)	3,194	3,103	3,193	2,952
IMPORTS				
U.S. Crude Oil ^C (MMB)	212	174	194	221
U.S. Natural Gas ^C (BCF)	256	221	204	257
BAKER HUGHES RIG COUNTS				
U.S. Gas ^A	128	130	139	198
U.S. Oil ^A	676	680	709	879
U.S. Offshore ^A	23	22	23	24
U.S. Total ^A	804	810	848	1,077
PRICES				
CRUDE OIL (\$/barrel)				
OPEC Average ^C (F.O.B.)	63.52	60.79	58.30	52.64
U.S. Imports Average ^C (F.O.B.)	51.57	51.80	50.37	38.65
U.S. Wellhead Average ^C	58.41	54.96	53.14	47.72
Gulf OCS Wellhead Average ^C	58.63	55.13	56.31	58.94
State Severance Wellhead Average ^E	63.94	62.62	58.70	51.58
NATURAL GAS (\$/MCF)				
U.S. City Gates Average ^C	3.85	3.44	3.40	4.74
U.S. Imports Average ^C (F.O.B.)	3.23	2.80	2.15	4.89
U.S. Spot Market Average ^D	2.44	2.52	1.90	4.07
State Royalty Wellhead Average	2.19	2.35	2.04	4.06
NYMEX Henry Hub End of the Month Settle Gas Price ^B (\$/MMBTU)	2.47	2.58	2.43	4.72

Key

Data Sources

1	Estimated	MCF	Thousand Cubic Feet
2	Revised	MMB	Million Barrels
BCF	Billion Cubic Feet	NA	Not Available
BTU	British Thermal Unit	OCS	Outer Continental Shelf
FO.B.	Free on Board	MMBTU	Million British Thermal Units

A	Oil & Gas Journal	D	Natural Gas Week
B	Wall Street Journal	E	LA Dept of Revenue
C	U. S. Dept. of Energy	F	BOEM

Note: Unless otherwise specified, data is from the Louisiana Department of Natural Resources and excludes Federal OCS.

Note from the Editors

Louisiana Energy Facts is published monthly by the Louisiana Department of Natural Resources, Technology Assessment Division as a public service to individuals interested in Louisiana energy activities. Content includes recent oil, gas and other energy statistics and a brief analysis of current trends.

Louisiana Energy Facts articles provide insight and information on subjects of special interest to our readers, and may announce relevant, forthcoming publications.

These documents are available on the Louisiana Department of Natural Resources, Technology Assessment Division home page:

<http://www.dnr.louisiana.gov/tad>. From the menu, select **Newsletters**. Our current online holdings include issues dating from 1998 through the present. If the issue you are seeking is unavailable, please contact us.

To request notification of when the Louisiana Energy Facts is available online, contact us at techasmt@la.gov with your name, title, company name, email address, and phone number. Please specify that you would like to be added to our email notification database for an electronic subscription.

Louisiana Non-Agricultural Employment^F

Louisiana DNR Technology Assessment Division

<u>Year</u>	<u>Oil & Gas Production</u>	<u>Chemical Industry</u>	<u>Oil Refining</u>	<u>Pipelines</u>	<u>Total Employment</u>
1979	74,017	31,831	12,608	1,100 *	1,554,370
1980	85,778	33,490	13,287	1,200 *	1,599,600
1981	94,772	32,711	16,314	1,200 *	1,627,796
1982	92,225	33,984	13,111	1,033 *	1,571,017
1983	77,283	30,272	13,140	1,282 *	1,531,480
1984	78,032	29,104	13,053	1,247 *	1,568,064
1985	77,781	28,093	12,458	1,144 *	1,550,443
1986	58,888	25,998	12,233	1,168 *	1,475,318
1987	52,117	25,345	12,225	1,051 *	1,438,793
1988	54,565	26,957	11,258	1,039 *	1,468,508
1989	52,556	28,146	11,325	1,016 *	1,494,181
1990	54,063	29,083	11,535	1,041 *	1,546,820
1991	54,412	29,412	12,268	1,073 *	1,567,139
1992	45,869	30,349	12,543	1,095 *	1,583,423
1993	44,422	30,419	12,728	1,078 *	1,613,577
1994	44,885	30,014	13,037	1,014 *	1,671,087
1995	44,279	30,168	11,603	932 *	1,721,651
1996	46,885	30,096	11,262	789 *	1,757,710
1997	51,559	29,935	11,038	792 *	1,797,225
1998	54,766	30,315	10,939	702 *	1,838,319
1999	44,684	28,877	11,070	693 *	1,847,841
2000	45,714	28,335	10,345	724 *	1,872,494
2001	47,009	27,337	10,643	2,417	1,868,902
2002	43,839	25,694	10,566	2,306	1,848,656
2003	42,339	24,558	10,395	2,334	1,851,570
2004	40,249	23,516	9,958	2,122	1,866,870
2005	41,179	23,269	10,240	2,179	1,843,237
2006	44,394	22,188	10,310	2,347	1,810,667
2007	46,764	22,612	10,764	2,454	1,869,965
2008	50,541	22,788	11,287	2,553	1,889,576
2009	46,956	22,478	11,363	2,456	1,849,395
2010	47,916	22,533	11,423	2,667	1,833,888
2011	49,239	23,141	11,163	2,771	1,844,578
2012	50,963	23,029	11,276	2,862	1,868,317
2013	50,242	23,345	11,575	2,857	1,891,851
2014	50,032	24,086	11,982	2,976	1,922,947
2015	43,492	25,025	12,048	3,122	1,929,817
2016	34,329	25,528	11,785	2,707	1,908,609
2017	31,828	25,510	11,824	2,575	1,904,609
2018	34,205 ²	26,246 ²	12,030 ²	2,460 ²	1,917,918 ²
2019	35,059 ¹	29,580 ¹	11,357 ¹	2,611 ¹	1,917,299 ¹

^F Louisiana Workforce Commission

* Natural Gas Pipeline data was excluded



LOUISIANA DEPARTMENT OF NATURAL RESOURCES

Technology Assessment Division

P. O. Box 94396

Baton Rouge, LA 70804-9396

INSIDE

Highlights
page 1

Louisiana Average Active Rigs in Areas Under State Jurisdiction
page 1

Current Oil & Gas Data
page 2

Louisiana Non-Agricultural Employment
page 3

Quick Facts
page 4

Quick Facts

JUNE 2020

Louisiana DNR Technology Assessment Division

SPOT MARKET PRICES

	May 20	Apr 20	May 19
Louisiana Natural Gas ^D (\$/MMBTU)	1.68	1.63	2.34
NYMEX Henry Hub Last Settle Gas Price ^B (\$/MMBTU)	1.72	1.70	2.59
Louisiana Sweet Crude - St. James ^B (\$/Barrel)	31.44	19.27	68.98

BAKER HUGHES RIG COUNTS

	Apr 20	Mar 20	Apr 19
North Louisiana ^A	24	27	38
South Louisiana Inland Waters ^A	0	1	3
South Louisiana Inland ^A	1	1	3
Louisiana State Offshore	0	0	1
Louisiana Federal OCS Offshore	25	19	19
Total Louisiana ^A (OCS included)	50	48	64

PRODUCTION (State Jurisdiction Only)

	Apr 20	Mar 20	Apr 19
Louisiana Crude Oil & Condensate (MMB)	3.6 ¹	3.8	4.0
Louisiana Natural Gas & Casinghead (BCF)	269.7 ¹	271.8	218.3

DRILLING PERMITS (State Jurisdiction Only)

	Apr 20	Mar 20	Apr 19
Total Louisiana Oil and Gas	26	45	54
Louisiana Wildcats	0	1	0
Louisiana Offshore (Wildcats included)	0	0	0