

LOUISIANA ELECTRIC GENERATION AND DISTRIBUTION UTILITIES

**AN UPDATED (2002) TABULATION OF LOUISIANA'S ELECTRIC POWER
GENERATION FACILITIES**

With

**A COMPANION TABULATION OF INDEPENDENT POWER PRODUCER (IPP)
AND COGENERATION FACILITIES**



**Prepared by
Bob Sprehe**

THE TECHNOLOGY ASSESSMENT DIVISION

**T. Michael French, P. E. Director
William J. Delmar, Jr. P. E. Assistant Director**

LOUISIANA DEPARTMENT OF NATURAL RESOURCES

**SCOTT A. ANGELLE
SECRETARY**

**Baton Rouge
June, 2005**

This issue of Louisiana Electric Generation and Distribution Utilities, (2002) is funded 100% (\$) with Petroleum Violation Escrow Funds as part of the State Energy Conservation Program as approved by the U. S. Department of Energy and the Department of Natural Resources.

This public document was published at a total cost of \$. 100 copies of this public document were published in this first printing at a total cost of \$. the total cost of all printings of this document, including reprints is \$. This document was published by the Department of Natural Resources, P. O. Box 44156, Baton Rouge, LA 70804-4156, to promulgate the State Energy Conservation Plan developed under authority of P. L. 94-163. This material was printed in accordance with the standards for printing by state agencies pursuant to R. S. 43:31.

TABLE OF CONTENTS

LOUISIANA ELECTRIC GENERATION AND DISTRIBUTION UTILITIES

VOLUME 1 UPDATE (2002)

	<u>Page no.</u>
LIST OF TABLES	ii
LIST OF FIGURES	iii
LIST OF EXHIBITS	iv
ABBREVIATIONS AND CODES	v - ix
DISCUSSION	1 - 12
EXHIBITS	
I Alphabetical Listing of Electric Power Distribution and Generation Utilities and Cogeneration Facilities in Louisiana (2002)	13 - 20
II Electricity Distribution Utilities in Louisiana (2002)	21 - 27
III Investor Owned Utilities in Louisiana (2002)	28 - 33
IV Publicly Owned Utilities in Louisiana with Generation Facilities (2002)	34 - 43
V Cogeneration Facilities in Louisiana (2002), Capacity and Energy Source	44 - 49
VI Cogeneration Facilities in Louisiana (2002), Age and Type Cogeneration	50 - 55
VII Jointly Owned Jointly Owned Electric Generating Plant in Louisiana (2002)	56
VIII Louisiana 2002 Net Generation by Type of Producer and Energy Source	57 - 58

LIST OF TABLES

<u>TABLE</u>		<u>PAGE NO.</u>
Table 1	Summary of Market Share between Types of Distribution and Generation Organizations (2002)	4
Table 2	Summary of Generation Capacity by Fuel Source 1993-1997-2002	5
Table 3	Electric Power Generation in Louisiana 1993-1997-2002	8

LIST OF FIGURES

<u>FIGURE</u>		<u>PAGE NO.</u>
Figure 1	The Importance of Electricity to the Nation	2
Figure 2	The Importance of Electricity to the State of Louisiana	3
Figure 3	Schematic of Electric Power Generation in Louisiana	3
Figure 4	Schematic of Electric Power Distribution in Louisiana	4
Figure 5	The Majority of IPP and Cogeneration Capacity has come on stream in the past 10 years	6.
Figure 6	An Aging Generation Plant in Louisiana’s Mainstay Utilities	6
Figure 7	An Aging Generation Plant among Publicly Owned Capacity	7
Figure 8	Louisiana Energy and Power Authority (LEPA) Member Cities	10
Figure 9	Louisiana Service Areas: Investor Owned Distribution Areas	11
Figure 10	Louisiana Service Areas: Association of Electric Cooperative Distribution Areas	12

LIST OF EXHIBITS

<u>EXHIBITS</u>		<u>PAGE NO.</u>
Exhibit I	Alphabetical Listing of Electric Power Distribution and Generation Utilities and Cogeneration Facilities in Louisiana (2002)	12 - 19
Exhibit II	Electricity Distribution Utilities in Louisiana (2002)	20 – 26
	All Sectors	20 - 21
	Industrial	22 - 23
	Commercial	24 - 25
	Residential	26
Exhibit III	Investor Owned Utilities in Louisiana (2002)	27 – 32
	Summary	27
	CLECO	28
	Entergy Gulf States	29
	Entergy Louisiana	30
	Entergy New Orleans	31
	SWEPCO	32
Exhibit IV	Publicly Owned Generation Plant	33 – 42
	Summary	33
	City of Alexandria	34
	City of Lafayette	35
	City of Minden	36
	City of Morgan City	37
	City of Natchitoches	38
	City of Rayne	39
	City of Ruston	40
	Terrebonne Parish	41
	LEPA	42
Exhibit V	Cogenerators, Capacity and Energy Source	44 – 49
Exhibit VI	Cogenerators, Plant Age, Type of Cogeneration	50 – 54
Exhibit VII	Jointly Owned Utility Plant	56
Exhibit VIII	Louisiana 2002 Net Generation By Type of Producer and Energy Source	57-58

ABBREVIATIONS AND NUMERIC CODES USED IN EXHIBITS

TYPE OF ELECTRIC POWER GENERATION

Sector Codes and Names

<u>Sector Number</u>	<u>Sector Name</u>	<u>Explanation</u>
1	Electric Utility	Traditional regulated electric utility
2	NAICS-22 Non-Cogen	Independent power producers which are not cogenerators
3	NAICS-22 Cogen	Independent power producers which are cogenerators, but whose primary business purpose is the sale of electricity to the public
4	Commercial NAICS Non-Cogen	Commercial non-cogeneration facilities that produce electric power are connected to the grid, and can sell power to the public
5	Commercial NAICS Cogen	Commercial cogeneration facilities that produce electric power, are connected to the grid, and can sell power to the public
6	Industrial NAICS Non-Cogen	Industrial non-cogeneration facilities that produce electric power, are connected to the grid, and can sell power to the public
7	Industrial NAICS Cogen	Industrial cogeneration facilities that produce electric power, are connected to the grid, and can sell power to the public

ABBREVIATIONS AND NUMERIC CODES USED IN EXHIBITS

NORTH AMERICAN INDUSTRIAL CLASSIFICATION SYSTEM (NAICS)

<u>NAICS Codes</u>	<u>Explanation</u>
211	oil and gas extraction
22	electric and gas services
311	Food and Kindred Products
322122	Paper Mills, except building paper
32213	Paperboard Mills
324	Petroleum Refining and related products
32411	Petroleum Refining
325	Chemicals and Allied Products
325188	Industrial Inorganic Chemicals
325211	Plastic Materials and Resins
421	Natural Gas Transmission
611	Educational Services

ABBREVIATIONS AND NUMERIC CODES USED IN EXHIBITS

TYPE OF COGENERATION PRIME MOVER

<u>Prime Mover Type</u>	<u>Description</u>
ST	Steam turbine, including nuclear, geothermal, and solar steam (does not include combined cycle)
GT	Combustion (gas) Turbine includes jet engine design)
IC	Internal Combustion (diesel, piston) Engine
CT	Combined Cycle Combustion—Turbine part
CA	Combined Cycle—Steam part
CS	Combined Cycle Single Shaft (combustion turbine and steam turbine share a single generator)
HY	Hydraulic Turbine (includes turbines associated with delivery of water by pipeline)
PS	Hydraulic Turbine—Reversible (pumped storage)
PV	Photovoltaic
WT	Wind Turbine
CE	Compressed Air Energy Storage
FC	Fuel Cell
OT	Other

ABBREVIATIONS AND NUMERIC CODES USED IN EXHIBITS

ENERGY SOURCE CODES

<u>Fuel</u>	<u>Energy Source Code</u>	<u>Units</u>	<u>Description</u>
<u>Fossil Fuels</u>			
Coal and Synfuel	BIT	tons	Anthracite Coal and Bituminous Coal
	LIG	tons	Lignite Coal
	SUB	tons	Sub-bituminous Coal
	WC	tons	Waste/Other Coal (includes anthracite culm, bituminous gob, fine coal, lignite waste, waste coal)
	SC	tons	Coal-based Synfuel, including briquettes, pellets, or extrusions, which are formed by binding materials or processes that recycle materials
Petroleum Products	DFO	barrels	Distillate Fuel Oil (Diesel, No. 1, 2, and 4 Fuel Oils)
	JF	barrels	Jet Fuel
	KER	barrels	Kerosene
	PC	tons	Petroleum Coke
	RFO	barrels	Residual Fuel Oil (No. 5, 6, and Bunker C Fuel Oil)
	WO	barrels	Waste/Other Oil (including Crude Oil, Liquid Butane, Liquid Propane, Oil Waste, Re-Refined Motor Oil, Sludge Oil, Tar Oil, or other petroleum based liquid wastes)
Natural Gas and other Gases	NG	Mcf	Natural Gas
	BFG	Mcf	Blast Furnace Gas
	OG	Mcf	Other Gas
	PG	Mcf	Gaseous Propane
<u>Nuclear</u>			
Nuclear	NUC	N/A	Nuclear Fission (Uranium, Plutonium, Thorium)
<u>Renewable Fuels</u>			
Solid Renewable Fuels	AB	tons	Agricultural Crop Byproducts/Straw/Energy Crops
	MSW	tons	Municipal Solid waste
	OBS	tons	Other Biomass Solids
	TDF	tons	Tire-derived Fuels
	WDS	tons	Wood/Wood Waste Solids (paper pellets, railroad ties, utility poles, wood chips, bark, and other wood waste solids)
Liquid Renewable (Biomass) Fuels	OBL	barrels	Other Biomass Liquids (specify)
	BLQ	tons	Black Liquor
	SLW	tons	Sludge Waste
	WDL	barrels	Wood Waste Liquids excluding Black Liquor (BLQ)

<u>Fuel</u>	<u>Energy Source Code</u>	<u>Units</u>	<u>Description</u>
Gaseous Renewable (Biomass) Fuels	LFG	Mcf	Landfill Gas
	OBG	Mcf	Other Biomass Gas (includes digester gas, methane, and other biomass gases)
All Other Renewable Fuels	GEO	N/A	Geothermal
	HY	N/A	Water at a Conventional Hydroelectric Turbine
	SUN	N/A	Solar
All Other Renewable Fuels	WND	N/A	Wind
All Other Fuels	PUR	MMBtus	Purchased Steam
	WH	MMBtus	Waste heat not directly attributed to a fuel source. Note that WH should only be reported where the fuel source for the waste heat is undetermined, and for combined cycle steam turbines that are not supplementary fired)
	OTH	N/A	Other
	NA	N/A	Not Available

Louisiana Electric Generation and Distribution Utilities

An Updated (2002) Tabulation of Louisiana's Electric Power Generation Facilities

With

A Companion Tabulation of Independent Power Producers (IPPs)
and Industrial Cogeneration Facilities as of 2002

Discussion

In 1994, 2 years following passage of the Energy Policy Act of 1992 (EPACT92), the Technology Assessment Division of the Department of Natural Resources (DNR) published a tabulation of Louisiana's electric power generation firms, their early history, development, and status. That document was entitled "Louisiana Electric Utilities, Volume 1".

It would be an understatement to say that the electric power generation sector of the economy is suffering "convulsions" from the restructuring initiative unleashed by EPACT92. The subsequent patchwork of individual state Public Service Commission (PSC) regulatory actions, that have been adopted across the nation have left the country with a stalled deregulation initiative, a significant financial commitment to new natural gas power generation technology, a volatile natural gas price regime, natural gas supply uncertainty, huge financial write downs of power generation investments on the balance sheets of both regulated and unregulated firms, power blackouts that affect regions of states not just community localities, criminal behavior and market collusion among some power trading and marketing companies, bankruptcies of utilities, criminal indictments of corporate utility executives, the near bankruptcy of the State of California, soaring electric power prices, some states requiring disaggregating of integrated firms, some states allowing integrated operations, renewed dialogue about the environmental viability of coal and nuclear power generation in the nation's future, a significant downgrading of the credit quality of the nation's utilities in general, a disagreement between state PSCs and the Federal Energy Regulatory Commission (FERC) over regulation of transmission of electric power, who should regulate siting of new transmission facilities, and on and on.

Needless to say any updated tabulation of electric power generation utilities is a "work in progress" under these situations. For example, since the publication of the 1994 report Cajun Electric Power Generation and Transmission Cooperative was placed in bankruptcy, eventually sold to an investor owned utility, that subsidiary then declared bankruptcy, and the units were again sold to other operators. CLECO expanded into IPP investments, encountered financial difficulties, and has now sold some of the IPP operations. Entergy expanded internationally and is now disposing of many of those assets. Cogeneration of electric power by industrial firms, both for internal process plant use and for the sale of excess power into the market, has grown rapidly since EPACT92. But now the volatility of natural gas prices, and the apparent uncertainty of domestic

natural gas supply, has driven many plants, particularly those utilizing natural gas in their processes, out of business here in the U.S. and toward relocation overseas where natural gas supply and labor are less costly. With so much electric power generation dependent on natural gas supply to IPPs and cogen facilities, both in Louisiana and nationally, the dependability of electric power generation becomes a legitimate public policy issue for the consuming public. Planning and financing of coal and nuclear fired power generation, to replace natural gas as a source of power generation, requires many years of preparation.

In this update we tabulate the electric utilities and the cogeneration facilities available in the state as of 2002. All of this data was secured from the web site (<http://www.eia.doe.gov>) of the Energy Information Administration (EIA). Given the rate of change in the power generation sector even this data is a work in progress. Publication of actual generation data lags by several months, and is the subject of revision as respondents complete their filing requirements. In subsequent reports scheduled for 2004-2005, the Technology Assessment Division will address in more detail the previously enumerated issues (page 1) that are arising from the stalled deregulation initiative that followed enactment of EPACT92, as well as any subsequent legislation or regulation that may ensue. As of the end of June, 2004, new energy legislation has been stalled in the Congress of the United States. The issues become more complex the longer they remain unaddressed.

Figure 1
The Importance of Electricity to the Nation

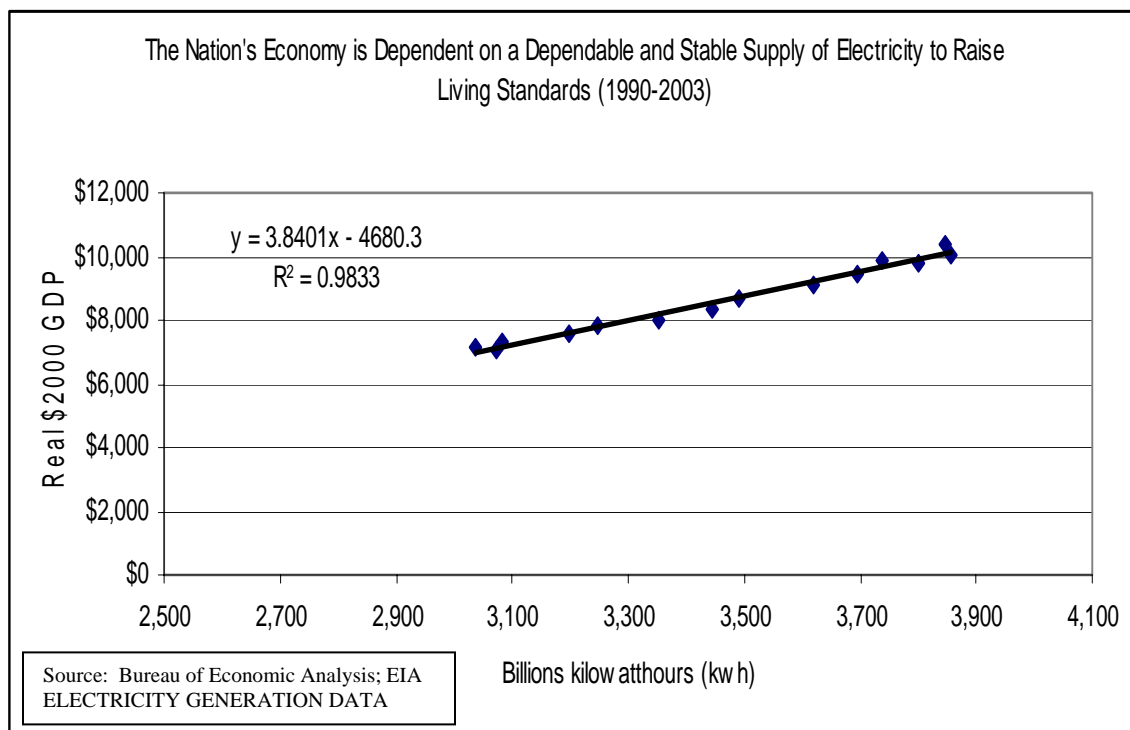
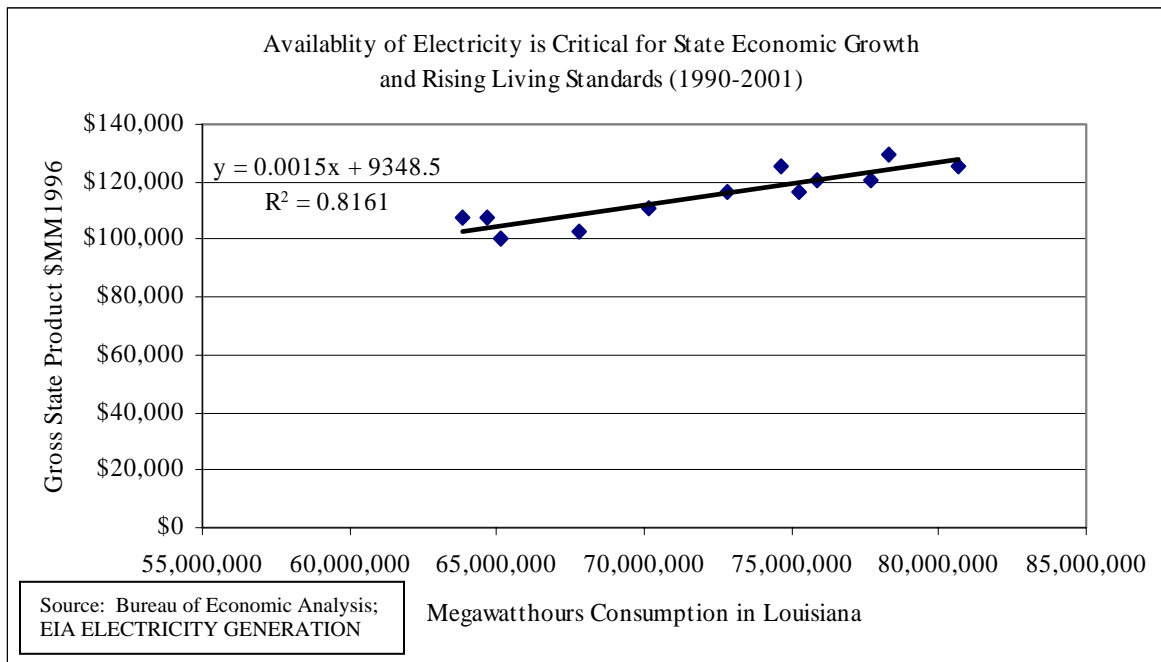


Figure 2
The Importance of Electricity to the State of Louisiana



The Organization of Generation and Distribution in Louisiana

Louisiana’s investor owned and publicly owned utilities both generate and distribute electric power to the consumer. Prior to its bankruptcy filing, Cajun Generation and Transmission (G&T) Coop served its distribution cooperatives. The survivor entity to Cajun now serves as an IPP. The cooperative distribution entities remain as distribution utilities within Louisiana. As in most industrial states, cogeneration of both heat for processes and power generation for internal consumption, as well as for sale to the transmission network, has become more economic with rising natural gas prices. In 2002 nearly 42% of generating capacity in the state came from IPPs and cogen.

Figure 3
Schematic of Electric Power Generation in Louisiana

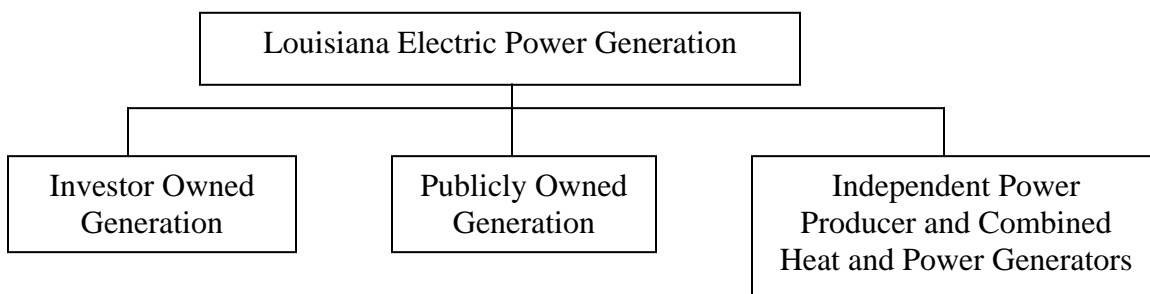
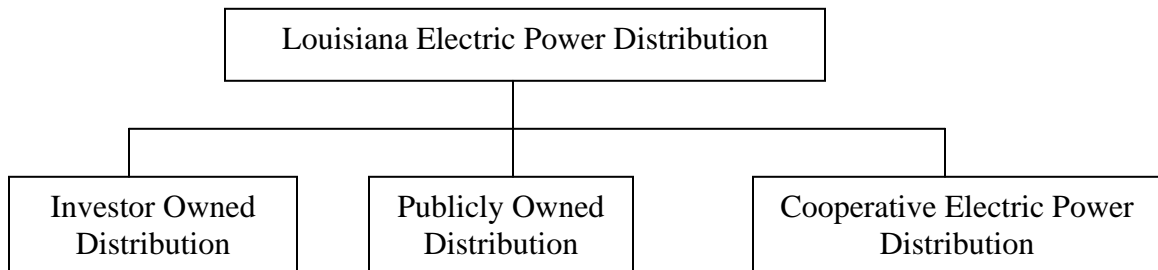


Figure 4
Schematic of Electric Power Distribution in Louisiana



Investor owned utilities continue to dominate the Louisiana market place with nearly 75% of the customers, 85% of power sales, and 55% of the electric power generation facilities.

Table 1
Summary of Market Share between Types of Distribution and Generation Organizations
(2002)

	<u>Distribution & Generation</u>				<u>Distribution & Generation %</u>			
	<u>Number of Consumers</u>	<u>Revenue (\$000's)</u>	<u>Sales (000 kwh)</u>	<u>Generating Capacity MW</u>	<u>Number of Consumers</u>	<u>Revenue</u>	<u>Sales</u>	<u>Generating Capacity</u>
Investor-Owned	1,598,991	\$4,000,861	67,844,289	14,134.8	75.75%	84.29%	85.60%	55.16%
Cooperative	359,391	\$477,054	7,233,854	0.0	17.03%	10.05%	9.13%	0.00%
Publicly Owned	152,386	\$268,485	4,182,846	822.0	7.22%	5.66%	5.28%	3.21%
IPPs, Cogen	0	0	0	10,667.6	0	0	0	41.63%
2002 Totals	2,110,768	\$4,746,400	79,260,989	25,624.4	100.00%	100.00%	100.00%	100.00%

Source: EIA ELECTRICITY GENERATION DATA

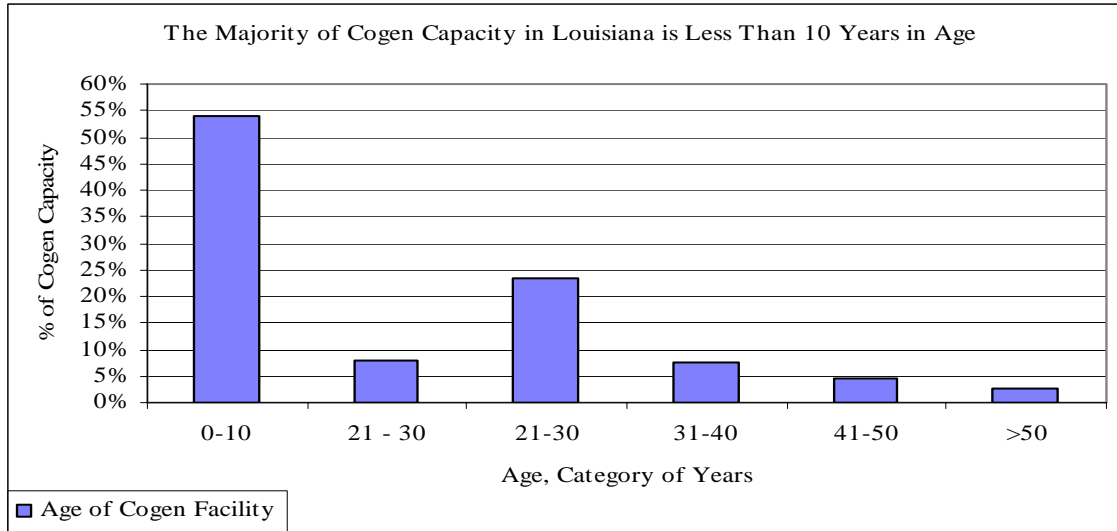
Natural gas retains its role as the dominant source of fuel for electric power generation in the state. Natural gas provides 40% of the aggregate electric generating capacity, and up to 75% when dual fuel capacity is considered. Most dual fuel capacity power generation combines the ability to interchange distillate or diesel fuel, and natural gas. Natural gas, of course, dominates the IPP and cogeneration applications.

Table 2
Summary of Generation Capacity by Fuel Source

	<u>1993</u>	<u>1997</u>	<u>2002</u>	Annual Growth Rate		% Share	
				1993-2002	%	1993	1997
Coal	3,343	3,453	1,723	-7.1	17.00%	16.90%	6.70%
Petroleum	16	16	16	0.0	0.10%	0.10%	0.10%
Natural Gas	1,811	1,910	1,735	-0.5	9.20%	9.40%	6.80%
Dual Fired	9,709	9,689	8,689	-1.2	49.50%	47.50%	33.90%
Nuclear	2,006	2,011	2,071	0.4	10.20%	9.90%	8.10%
Total Electric Utilities	16,885	17,079	14,233	-1.9	86.00%	83.70%	55.50%
Coal	8	8	1,730	81.8	0.00%	0.00%	6.70%
Petroleum	0	6	46	NM	0.00%	0.00%	0.20%
Natural Gas	1,652	2,285	8,724	20.3	8.40%	11.20%	34.00%
Other Gases	10	27	62	22.7	0.10%	0.10%	0.20%
Dual Fired	378	290	451	2.0	1.90%	1.40%	1.80%
Hydroelectric	182	182	192	0.6	0.90%	0.90%	0.70%
Other							
Renewables	487	517	170	-11.0	2.50%	2.50%	0.70%
Other	21	21	24	1.6	0.10%	0.10%	0.10%
Total IPPs & Combined	2,739	3,337	11,399	17.2	14.00%	16.30%	44.50%
Heat & Power							
Coal	3,351	3,461	3,453	0.3	17.10%	17.00%	13.50%
Petroleum	16	22	62	16.2	0.10%	0.10%	0.20%
Natural Gas	3,463	4,195	10,458	13.1	17.60%	20.50%	40.80%
Other Gases	10	27	62	22.7	0.10%	0.10%	0.20%
Dual Fired	10,087	9,980	9,140	-1.1	51.40%	48.90%	35.70%
Nuclear	2,006	2,011	2,071	0.4	10.20%	9.90%	8.10%
Hydroelectric	182	182	192	0.6	0.90%	0.90%	0.70%
Other							
Renewables	487	517	170	-11.0	2.50%	2.50%	0.70%
Other	21	21	24	1.6	0.10%	0.10%	0.10%
Total Electric Industry	19,624	20,416	25,633	3.0	100.00%	100.00%	100.00%

Source: EIA ELECTRICITY GENERATION DATA

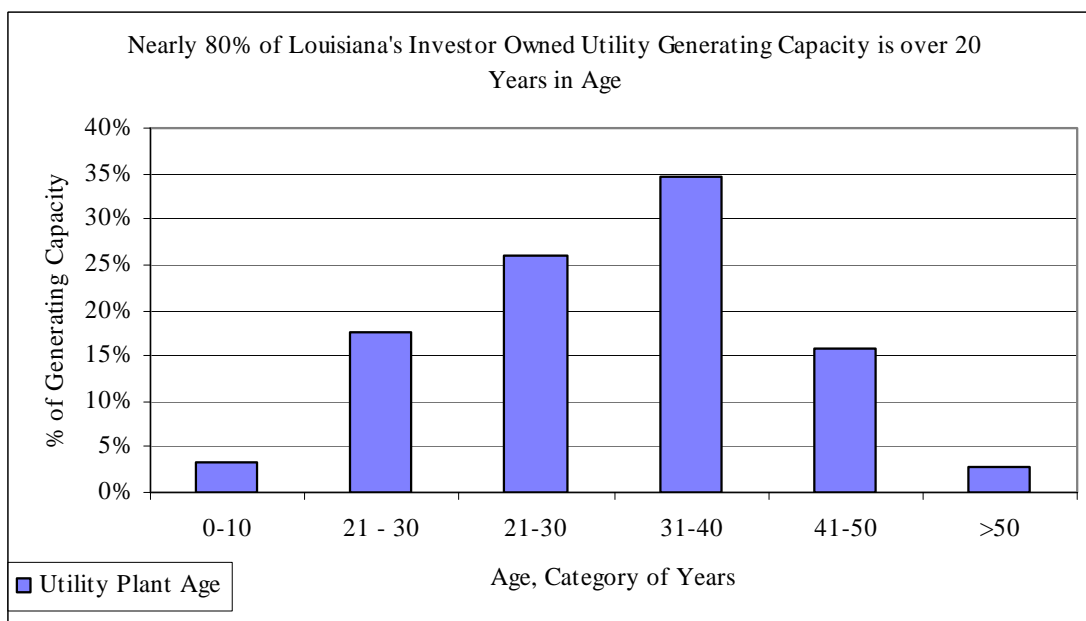
Figure 5
 The Majority of IPP and Cogen Capacity (nearly 45%)
 has come on stream in the past 10 years.



Source: EIA ELECTRICITY GENERATION DATA

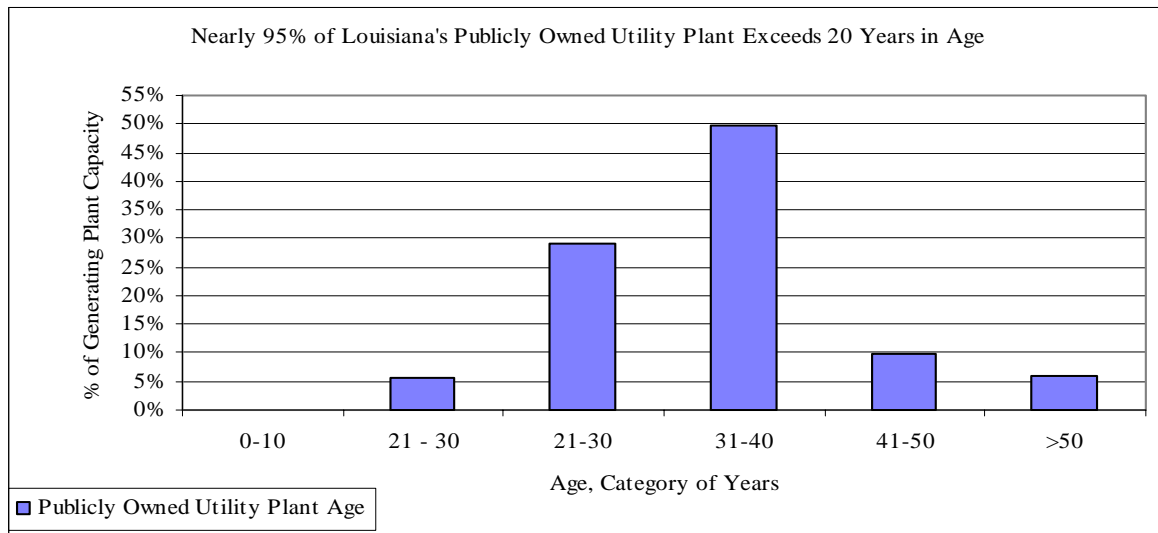
However, the same cannot be said for the investor and publicly owned utilities (nearly 55% of generating capacity). Nearly 80% of the investor owned capacity is over 20 years in age; and nearly 95% of the publicly owned capacity is over 20 years in age.

Figure 6
 An Aging Generation Plant in Louisiana's Mainstay Utilities



Source: EIA ELECTRICITY GENERATION DATA

Figure 7
An Aging Generation Plant among Publicly Owned Capacity



Source: EIA ELECTRICITY GENERATION DATA

Generation of Electric Power

In the aggregate, 50% of Louisiana's electric power generation relies on natural gas as its fuel source. Nearly 23% comes from coal fired generation; and nearly 18% from nuclear power.

Table 3
Electric Power Generation in Louisiana, 1993-1997-2002 (MWHs)

				Annual Growth Rate 1993- 2002	% Share		
	<u>1993</u>	<u>1997</u>	<u>2002</u>	<u>%</u>	<u>1993</u>	<u>1997</u>	<u>2002</u>
Coal	19,365,873	20,952,995	12,258,694	-5.0	24.50%	25.30%	12.90%
Petroleum	1,837,844	645,547	68,460	-30.6	2.30%	0.80%	0.10%
Natural Gas	23,750,752	26,010,452	25,085,994	0.6	30.10%	31.40%	26.40%
Other Gases	0	0	203,484	NM	0.00%	0.00%	0.20%
Nuclear	14,398,103	13,511,008	17,305,328	2.1	18.20%	16.30%	18.20%
Total Electric Utilities	59,352,572	61,120,002	54,921,960	-0.9	75.20%	73.80%	57.80%
Coal	45,855	54,126	9,792,212	81.5	0.10%	0.10%	10.30%
Petroleum	1,649,723	1,640,597	1,796,076	0.9	2.10%	2.00%	1.90%
Natural Gas	12,604,472	14,566,110	22,814,854	6.8	16.00%	17.60%	24.00%
Other Gases	700,587	1,088,279	1,294,140	7.1	0.90%	1.30%	1.40%
Hydroelectric	1,231,946	1,035,961	891,441	-3.5	1.60%	1.30%	0.90%
Other							
Renewables	2,674,066	3,138,770	2,862,791	0.8	3.40%	3.80%	3.00%
Other	716,315	177,799	597,490	-2.0	0.90%	0.20%	0.60%
Total IPPs & Combined	19,622,964	21,701,640	40,049,003	8.2	24.80%	26.20%	42.30%
Heat & Power							
	<u>1993</u>	<u>1997</u>	<u>2002</u>	<u>%</u>	<u>1993</u>	<u>1997</u>	<u>2002</u>
Coal	19,411,728	21,007,121	22,050,906	1.4	24.60%	25.40%	23.20%
Petroleum	3,487,567	2,286,144	1,864,536	-6.7	4.40%	2.80%	2.00%
Natural Gas	36,355,224	40,576,562	47,900,848	3.1	46.00%	49.00%	50.40%
Other Gases	700,587	1,088,279	1,497,624	8.8	0.90%	1.30%	1.60%
Nuclear	14,398,103	13,511,008	17,305,328	2.1	18.20%	16.30%	18.20%
Hydroelectric	1,231,946	1,035,961	891,441	-3.5	1.60%	1.30%	0.90%
Other							
Renewables	2,674,066	3,138,770	2,862,791	0.8	3.40%	3.80%	3.00%
Other	716,315	177,799	597,490	-2.0	0.90%	0.20%	0.60%
Total Electric Industry	78,975,536	82,821,642	94,970,963	2.1	100.00%	100.00%	100.00%

Source: EIA ELECTRICITY GENERATION DATA

Municipal Power Authorities in Louisiana

There are 22 cities in Louisiana that own their own independent municipal power distribution systems (see Exhibit II). There are three (3) legislatively authorized power authorities that provide an ownership vehicle for the joint generation of electric power for Louisiana residents and firms.

The Louisiana Energy and Power Authority (LEPA) was created as a political subdivision of the State of Louisiana in 1979 pursuant to Title 33 of the Louisiana Revised Statutes of 1950. LEPA is a non-profit, joint action agency working to provide its member communities with firm, stable sources of electricity at the lowest possible cost

(LEPA Mission Statement). Eighteen (18) Louisiana municipalities are currently members of LEPA. They are identified on the following map (Figure 8).

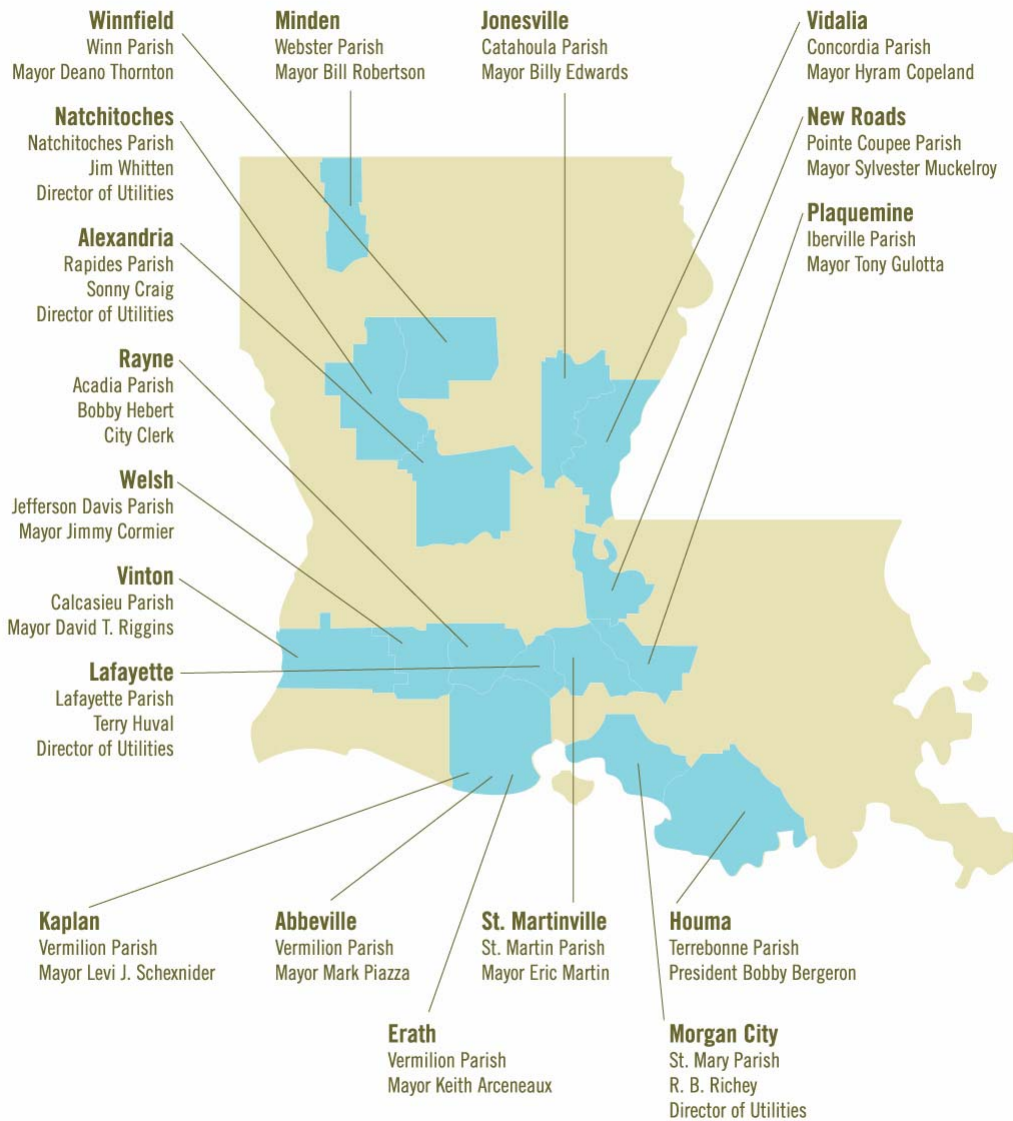
LEPA owns a 20% undivided interest, under a the Joint Ownership Agreement, in a 530 MW coal fired steam electric generating plant, the Rodemacher Unit No. 2, located near Boyce, Louisiana. CLECO holds a 30% ownership interest, and the Lafayette Public Power Authority (LPPA) owns the remaining 50%.

LEPA operates and is responsible for the maintenance of many of the participating municipality power generating systems, and dispatches load for its members from its central control center in Lafayette.

The Lafayette Public Power Authority (LPPA) is a political subdivision of the State of Louisiana created by the City Council of Lafayette. It was created in 1977 for the purpose of owning and operating public electric power projects and purchasing and selling electric power. As noted above, LPPA owns 50% of the Rodemacher No. 2 unit.

The Sabine River Authority of Louisiana (SRAL) was created by the Louisiana Legislature in 1950. The mission of the Sabine River Authority of Louisiana, consistent with Louisiana Revised Statutes 38:2321, et. seq., and with Article 48 of the Federal Power Commission License, Project 2305, is to provide for economic utilization and preservation of the waters of the Sabine River and its tributaries by promoting economic development, irrigation, navigation, improved water supply, drainage, public recreation, and hydroelectric power for the citizens of Louisiana. Each Texas and Louisiana Authority own 50% of the hydroelectric power plant. The physical location of the plant is entirely in Texas. All generating statistics are reported in Texas. Power is sold to Entergy Gulf States, CLECO, and Entergy Louisiana.

Figure 8
Louisiana Energy and Power Authority Member Cities



Source: BBR Creative, Lafayette; Charles East Marketing, Baton Rouge; and LEPA

Joint Ownership in Generating Plant

As noted above, there is joint ownership of generating plant among utilities in Louisiana. This joint ownership, while not extensive, is detailed in Exhibit VII.

Figure 9
 Approximate Service Territory of Louisiana Investor Owned Utilities

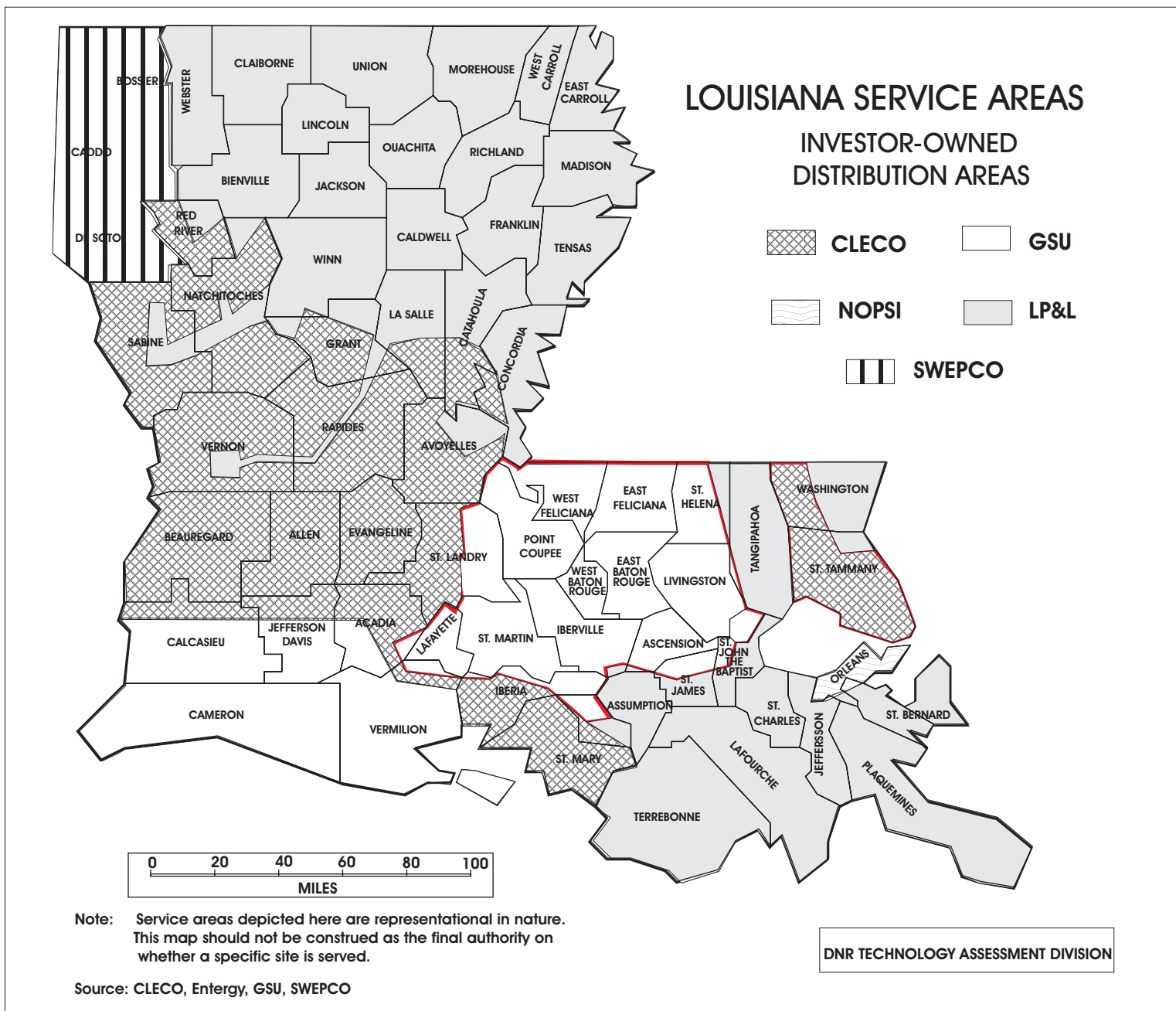


Figure 10
 Approximate Service Territory of Louisiana Cooperative Utilities

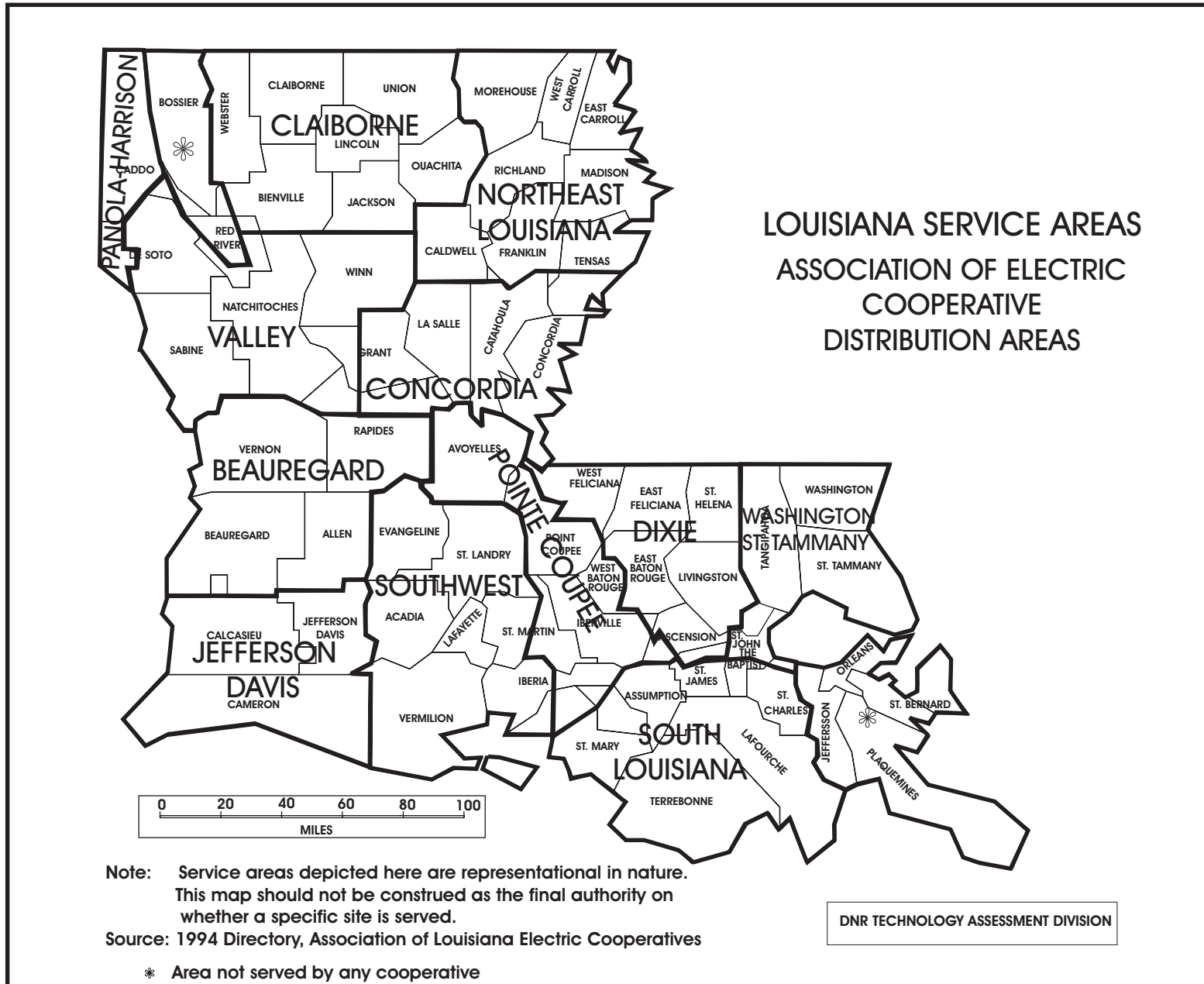


EXHIBIT I

Alphabetical Listing of Electric Power Distribution and Generation Utilities and Cogeneration Facilities in Louisiana (2002)

Existing Electric Generating Units in the United States by State, Company and Plant, 2002

(includes data from the 2001 database, plus units that entered commercial operation during 2002)

Company	County	Plant Name	NAICS	Prime Mover	Energy Source 1	Sector	Nameplate Capacity (Megawatts)
Agrilectric Power Partners Ltd	Calcasieu	Agrilectric Power Partners Ltd	22	ST	AB	2	12.1
Agrilectric Power Partners Ltd	Calcasieu	Agrilectric Power Partners Ltd	22	ST	AB	2	1.5
Air Products & Chemicals Inc	Orleans	New Orleans	325188	GT	NG	7	23.4
Air Products & Chemicals Inc	Orleans	New Orleans	325188	ST	NG	7	7.8
Alexandria City of	Rapides	DG Hunter	22	ST	NG	1	17.5
Alexandria City of	Rapides	DG Hunter	22	ST	NG	1	17.5
Alexandria City of	Rapides	DG Hunter	22	ST	NG	1	85
Alexandria City of	Rapides	DG Hunter	22	ST	NG	1	55
BASF Corp	Ascension	Geismar	325	GT	NG	7	35.7
BASF Corp	Ascension	Geismar	325	GT	NG	7	41.2
Bayou Cove Peaking Power LLC	Anoka	Bayou Cove Peaking Power	22	GT	NG	2	110
Bayou Cove Peaking Power LLC	Anoka	Bayou Cove Peaking Power	22	GT	NG	2	110
Bayou Cove Peaking Power LLC	Anoka	Bayou Cove Peaking Power	22	GT	NG	2	110
Bayou Cove Peaking Power LLC	Anoka	Bayou Cove Peaking Power	22	GT	NG	2	110
Big Cajun 1 Peakers	Pointe Coupee	Big Cajun 1 Peakers	22	GT	NG	2	128
Big Cajun 1 Peakers	Pointe Coupee	Big Cajun 1 Peakers	22	GT	NG	2	128
Boise Cascade Corp-DeRidder	Beauregard	DeRidder Mill	322122	ST	BLQ	7	61.5
Borden Chemicals & Plastics	Ascension	Borden Chemicals Plastics Cogn	325	GT	NG	7	26
Borden Chemicals & Plastics	Ascension	Borden Chemicals Plastics Cogn	325	GT	NG	7	38.8
Borden Chemicals & Plastics	Ascension	Borden Chemicals Plastics Cogn	325	GT	NG	7	38.8
BP America Production Co	Cameron	Grand Chenier Gas Processing	211	ST	NG	7	0.4
BP America Production Co	Cameron	Grand Chenier Gas Processing	211	ST	NG	7	0.5
BP America Production Co	Cameron	Grand Chenier Gas Processing	211	ST	NG	7	0.4
BP America Production Co	Cameron	Grand Chenier Gas Processing	211	ST	NG	7	0.5
Calasieu Power LLC	Calcasieu	Calcasieu	22	GT	NG	2	155
Calasieu Power LLC	Calcasieu	Calcasieu	22	GT	NG	2	165
Calpine Corp	Acadia Parish	Acadia Power Station	22	CT	NG	2	185
Calpine Corp	Acadia Parish	Acadia Power Station	22	CT	NG	2	185
Calpine Corp	Acadia Parish	Acadia Power Station	22	ST	NG	2	240
Calpine Corp	Acadia Parish	Acadia Power Station	22	CA	NG	2	240
Calpine Corp	Acadia Parish	Acadia Power Station	22	CT	NG	2	185
Calpine Corp	Acadia Parish	Acadia Power Station	22	CT	NG	2	185
Chevron Oronite Co LLC	Plaquemines	Oak Point Cogen	325	GT	NG	7	5
Chevron Oronite Co LLC	Plaquemines	Oak Point Cogen	325	GT	NG	7	5

Source:

EIA Electricity Historical Spreadsheets

Technology Assessment Division, Department of Natural Resources

EXHIBIT I

Alphabetical Listing of Electric Power Distribution and Generation Utilities and Cogeneration Facilities in Louisiana (2002)

Company	County	Plant Name	NAICS	Prime Mover	Energy Source 1	Sector	Nameplate Capacity (Megawatts)
Chevron Oronite Co LLC	Plaquemines	Oak Point Cogen	325	GT	NG	7	5
Chevron Oronite Co LLC	Plaquemines	Oak Point Cogen	325	GT	NG	7	5
Chevron Oronite Co LLC	Plaquemines	Oak Point Cogen	325	GT	NG	7	5
CII Carbon LLC	St Bernard	CII Carbon LLC	22	ST	PC	2	23
CII Carbon LLC	St Bernard	CII Carbon LLC	22	ST	PC	2	23
CITGO Petroleum Corp	Calcasieu	CITGO Refinery Powerhouse	32411	ST	OG	7	25
CITGO Petroleum Corp	Calcasieu	CITGO Refinery Powerhouse	32411	ST	OG	7	25
CITGO Petroleum Corp	Calcasieu	CITGO Refinery Powerhouse	32411	ST	OG	7	25
Cleco Evangeline LLC	Evangeline	Evangeline	22	CT	NG	2	188.7
Cleco Evangeline LLC	Evangeline	Evangeline	22	CA	NG	2	113.6
Cleco Evangeline LLC	Evangeline	Evangeline	22	CA	NG	2	243.1
Cleco Evangeline LLC	Evangeline	Evangeline	22	CT	NG	2	188.7
Cleco Evangeline LLC	Evangeline	Evangeline	22	CT	NG	2	188.7
CLECO Power LLC	De Soto	Dolet Hills	22	ST	LIG	1	720.7
CLECO Power LLC	St Mary	Franklin	22	GT	NG	1	10
CLECO Power LLC	Rapides	Rodemacher	22	ST	SUB	1	558
CLECO Power LLC	Rapides	Rodemacher	22	ST	NG	1	445.5
CLECO Power LLC	St Mary	Teche	22	ST	NG	1	24.9
CLECO Power LLC	St Mary	Teche	22	ST	NG	1	54.4
CLECO Power LLC	St Mary	Teche	22	ST	NG	1	348.5
Colonial Sugar Refinery	St James	Colonial Sugar Refinery	311	ST	NG	7	0.7
Colonial Sugar Refinery	St James	Colonial Sugar Refinery	311	ST	NG	7	1.7
Colonial Sugar Refinery	St James	Colonial Sugar Refinery	311	ST	NG	7	2.5
Colonial Sugar Refinery	St James	Colonial Sugar Refinery	311	ST	NG	7	2.5
Dow Chemical Co	Iberville	CA II (Chlor Alkali II)	325188	CS	NG	7	53
Dow Chemical Co	Iberville	CA II (Chlor Alkali II)	325188	CS	NG	7	53
Dow Chemical Co	Iberville	Power and Utilities	325	CA	WH	7	57
Dow Chemical Co	Iberville	Power and Utilities	325	CA	WH	7	90
Dow Chemical Co	Iberville	Power and Utilities	325	CT	NG	7	70
Dow Chemical Co	Iberville	Power and Utilities	325	CT	NG	7	125
Dow Chemical Co	Iberville	Power and Utilities	325	CT	NG	7	125
Dow Chemical Co	Iberville	Power and Utilities	325	CT	NG	7	70
Dow Chemical Co	Iberville	Power and Utilities	325	CA	WH	7	57
Dow Chemical Co	Iberville	Power and Utilities	325	CA	WH	7	88
Dow Chemical Co-St Charles	St Charles Parish	St Charles Ops	325	CT	NG	7	116
Dow Chemical Co-St Charles	St Charles Parish	St Charles Ops	325	CA	WH	7	10
Dow Chemical Co-St Charles	St Charles Parish	St Charles Ops	325	CA	WH	7	22
Dow Chemical Co-St Charles	St Charles Parish	St Charles Ops	325	CT	NG	7	9.6
Dow Chemical Co-St Charles	St Charles Parish	St Charles Ops	325	CT	NG	7	116

Source:

EIA Electricity Historical Spreadsheets

Technology Assessment Division, Department of Natural Resources

EXHIBIT I

Alphabetical Listing of Electric Power Distribution and Generation Utilities and Cogeneration Facilities in Louisiana (2002)

Company	County	Plant Name	NAICS	Prime Mover	Energy Source 1	Sector	Nameplate Capacity (Megawatts)
DSM Copolymer	East Baton Rouge	Baton Rouge Plant	325	ST	NG	7	3
DSM Copolymer	East Baton Rouge	Baton Rouge Plant	325	ST	NG	7	3
Dynegy Midstream Services	Cameron	Stingray	324	GT	NG	3	2.5
Entergy Gulf States Inc	East Baton Rouge	La Station	22	ST	NG	1	23
Entergy Gulf States Inc	East Baton Rouge	La Station	22	ST	NG	1	63
Entergy Gulf States Inc	East Baton Rouge	La Station	22	ST	NG	1	62.5
Entergy Gulf States Inc	East Baton Rouge	La Station	22	GT	NG	1	101
Entergy Gulf States Inc	East Baton Rouge	Louisiana 2	22	ST	NG	1	50
Entergy Gulf States Inc	East Baton Rouge	Louisiana 2	22	ST	NG	1	75
Entergy Gulf States Inc	East Baton Rouge	Louisiana 2	22	ST	NG	1	50
Entergy Gulf States Inc	Calcasieu	Nelson Coal	22	ST	SUB	1	614.6
Entergy Gulf States Inc	Calcasieu	R S Nelson	22	ST	NG	1	113.6
Entergy Gulf States Inc	Calcasieu	R S Nelson	22	ST	NG	1	163.2
Entergy Gulf States Inc	Calcasieu	R S Nelson	22	ST	NG	1	591.8
Entergy Gulf States Inc	Calcasieu	R S Nelson	22	ST	NG	1	113.6
Entergy Gulf States Inc	West Feliciana	Riverbend	22	ST	NUC	1	1035.9
Entergy Gulf States Inc	Iberville	Willow Glen	22	ST	NG	1	163.2
Entergy Gulf States Inc	Iberville	Willow Glen	22	ST	NG	1	591.8
Entergy Gulf States Inc	Iberville	Willow Glen	22	ST	NG	1	591.8
Entergy Gulf States Inc	Iberville	Willow Glen	22	ST	NG	1	591.8
Entergy Gulf States Inc	Iberville	Willow Glen	22	ST	NG	1	239.4
Entergy Louisiana Inc	Plaquemines	Buras	22	GT	NG	1	20.7
Entergy Louisiana Inc	St Charles	Little Gypsy	22	ST	NG	1	247.7
Entergy Louisiana Inc	St Charles	Little Gypsy	22	ST	NG	1	582.2
Entergy Louisiana Inc	St Charles	Little Gypsy	22	ST	NG	1	420.7
Entergy Louisiana Inc	Ouachita	Monroe	22	ST	NG	1	25
Entergy Louisiana Inc	Ouachita	Monroe	22	ST	NG	1	37.5
Entergy Louisiana Inc	Ouachita	Monroe	22	ST	NG	1	75
Entergy Louisiana Inc	Jefferson	Nine Mile Point	22	ST	NG	1	69
Entergy Louisiana Inc	Jefferson	Nine Mile Point	22	ST	NG	1	895.1
Entergy Louisiana Inc	Jefferson	Nine Mile Point	22	ST	NG	1	112.5
Entergy Louisiana Inc	Jefferson	Nine Mile Point	22	ST	NG	1	169.8
Entergy Louisiana Inc	Jefferson	Nine Mile Point	22	ST	NG	1	895.1
Entergy Louisiana Inc	Ouachita	Sterlington	22	ST	NG	1	247.7
Entergy Louisiana Inc	Ouachita	Sterlington	22	CT	NG	1	66
Entergy Louisiana Inc	Ouachita	Sterlington	22	CA	NG	1	101
Entergy Louisiana Inc	Ouachita	Sterlington	22	CT	NG	1	233
Entergy Louisiana Inc	Lafourche	Thibodaux	22	ST	NG	1	21
Entergy Louisiana Inc	St Charles	Waterford 1 & 2	22	ST	NG	1	445.5

Source:

EIA Electricity Historical Spreadsheets

Technology Assessment Division, Department of Natural Resources

EXHIBIT I

Alphabetical Listing of Electric Power Distribution and Generation Utilities and Cogeneration Facilities in Louisiana (2002)

Company	County	Plant Name	NAICS	Prime Mover	Energy Source 1	Sector	Nameplate Capacity (Megawatts)
Entergy Louisiana Inc	St Charles	Waterford 1 & 2	22	ST	NG	1	445.5
Entergy Louisiana Inc	St Charles	Waterford 3	22	ST	NUC	1	1199.8
Entergy New Orleans Inc	Orleans	A B Paterson	22	ST	NG	1	51.7
Entergy New Orleans Inc	Orleans	A B Paterson	22	GT	DFO	1	16
Entergy New Orleans Inc	Orleans	A B Paterson	22	ST	NG	1	81.2
Entergy New Orleans Inc	Orleans	Michoud	22	ST	NG	1	115.2
Entergy New Orleans Inc	Orleans	Michoud	22	ST	NG	1	582.2
Entergy New Orleans Inc	Orleans	Michoud	22	ST	NG	1	261.8
Exxon Mobil	East Baton Rouge	Baton Rouge Cogen	32512	GT	NG	7	422.1
Exxon Mobil	East Baton Rouge	Baton Rouge Turbine	32512	GT	NG	7	85.3
Exxon Mobil Production Co	Iberia	Blue Water Gas	211	IC	NG	7	0.6
Exxon Mobil Production Co	Iberia	Blue Water Gas	211	IC	NG	7	0.6
Exxon Mobil Production Co	Iberia	Blue Water Gas	211	IC	NG	7	0.6
Exxon Mobil Production Co	Iberia	Blue Water Gas	211	IC	NG	7	0.6
Exxon Mobil Production Co	Iberia	Blue Water Gas	211	IC	NG	7	0.6
Exxon Mobil Production Co	St Mary	Garden City Gas	211	ST	NG	7	0.6
Exxon Mobil Production Co	St Mary	Garden City Gas	211	ST	NG	7	0.6
Exxon Mobil Production Co	St Mary	Garden City Gas	211	IC	NG	7	0.1
Exxon Mobil Production Co	St Mary	Garden City Gas	211	GT	NG	7	0.8
Exxon Mobil Production Co	St Mary	Garden City Gas	211	ST	NG	7	0.6
Exxon Mobil Production Co	Jefferson	Grand Isle Gas	211	IC	NG	7	3
Exxon Mobil Production Co	Jefferson	Grand Isle Gas	211	IC	NG	7	3
Exxon Mobil Production Co	Jefferson	Grand Isle Gas	211	IC	NG	7	3
First National Bank-Commerce	Concordia	Sidney A Murray Jr Hydro	22	HY	WAT	2	24
First National Bank-Commerce	Concordia	Sidney A Murray Jr Hydro	22	HY	WAT	2	24
First National Bank-Commerce	Concordia	Sidney A Murray Jr Hydro	22	HY	WAT	2	24
First National Bank-Commerce	Concordia	Sidney A Murray Jr Hydro	22	HY	WAT	2	24
First National Bank-Commerce	Concordia	Sidney A Murray Jr Hydro	22	HY	WAT	2	24
First National Bank-Commerce	Concordia	Sidney A Murray Jr Hydro	22	HY	WAT	2	24
First National Bank-Commerce	Concordia	Sidney A Murray Jr Hydro	22	HY	WAT	2	24
Formosa Plastics Corp	East Baton Rouge	Formosa Plastics Corp	325211	GT	NG	7	38.2
Formosa Plastics Corp	East Baton Rouge	Formosa Plastics Corp	325211	GT	NG	7	38.8
Formosa Plastics Corp	East Baton Rouge	Formosa Plastics Corp	325211	GT	NG	7	42.7
Formosa Plastics Corp	East Baton Rouge	Formosa Plastics Corp	325211	ST	NG	7	12
Formosa Plastics Corp	East Baton Rouge	Formosa Plastics Corp	325211	ST	NG	7	12
Gaylord Container Corp	Washington	Gaylord Container Corp Bogalus	322122	ST	NG	7	37
Gaylord Container Corp	Washington	Gaylord Container Corp Bogalus	322122	ST	NG	7	25
Gaylord Container Corp	Washington	Gaylord Container Corp Bogalus	322122	ST	NG	7	37.5

Source:

EIA Electricity Historical Spreadsheets

Technology Assessment Division, Department of Natural Resources

EXHIBIT I

Alphabetical Listing of Electric Power Distribution and Generation Utilities and Cogeneration Facilities in Louisiana (2002)

Company	County	Plant Name	NAICS	Prime Mover	Energy Source 1	Sector	Nameplate Capacity (Megawatts)
Georgia Gulf Corp	Iberville	Plaquemine	325188	GT	NG	7	102
Georgia Gulf Corp	Iberville	Plaquemine	325188	GT	NG	7	102
Georgia Gulf Corp	Iberville	Plaquemine	325188	GT	NG	7	102
Georgia-Pacific Corp	East Baton Rouge	Port Hudson	322122	ST	BLQ	7	60
IMC Phosphates Co	St James	Uncle Sam	325188	ST	OTH	7	11
IMC Phosphates Co	St James	Uncle Sam	325188	ST	OTH	7	11
International Paper Co	Morehouse	Louisiana Mill	322122	ST	NG	7	21.8
International Paper Co	Morehouse	Louisiana Mill	322122	ST	NG	7	37.5
IPC-Mansfield Mill	Desota	Mansfield Mill	32213	ST	WDS	7	40
IPC-Mansfield Mill	Desota	Mansfield Mill	32213	ST	WDS	7	40
IPC-Mansfield Mill	Desota	Mansfield Mill	32213	GT	NG	7	25
IPC-Mansfield Mill	Desota	Mansfield Mill	32213	ST	WDS	7	30
IPC-Pine	Rapides	Pineville Mill	32213	ST	NG	7	25
Jeanerette Sugar Co Inc	Iberia	Jeanerette Sugar Co Inc	311	ST	AB	7	2.5
Kaiser Aluminum&Chemical Corp	Saint James	Kaiser Aluminum	325188	GT	NG	7	16
Kaiser Aluminum&Chemical Corp	Saint James	Kaiser Aluminum	325188	GT	NG	7	24.7
Kaiser Aluminum&Chemical Corp	Saint James	Kaiser Aluminum	325188	ST	NG	7	7.2
Kaiser Aluminum&Chemical Corp	Saint James	Kaiser Aluminum	325188	ST	NG	7	18.7
Kaiser Aluminum&Chemical Corp	Saint James	Kaiser Aluminum	325188	ST	NG	7	18.7
Kaiser Aluminum&Chemical Corp	Saint James	Kaiser Aluminum	325188	GT	NG	7	16
Kaiser Aluminum&Chemical Corp	Saint James	Kaiser Aluminum	325188	GT	NG	7	16
Lafayette City of	Lafayette	Louis Doc Bonin	22	ST	NG	1	53.9
Lafayette City of	Lafayette	Louis Doc Bonin	22	ST	NG	1	100
Lafayette City of	Lafayette	Louis Doc Bonin	22	ST	NG	1	187
Lafayette City of	Lafayette	Rodemacher	22	ST	NG	1	13.3
Lafayette City of	Lafayette	Rodemacher	22	ST	NG	1	25.4
Louisiana Energy & Power Auth	Pointe Coupee	New Roads	22	IC	DFO	1	2.3
Louisiana Energy & Power Auth	Pointe Coupee	New Roads	22	IC	DFO	1	2
Louisiana Energy & Power Auth	Pointe Coupee	New Roads	22	IC	DFO	1	1.7
Louisiana Energy & Power Auth	Pointe Coupee	New Roads	22	IC	DFO	1	1.7
Louisiana Energy & Power Auth	Pointe Coupee	New Roads	22	IC	DFO	1	1.1
Louisiana Energy & Power Auth	Pointe Coupee	New Roads	22	IC	DFO	1	0.6
Louisiana Generating LLC	Pointe Coupee	Big Cajun 1	22	ST	NG	2	133.6
Louisiana Generating LLC	Pointe Coupee	Big Cajun 1	22	ST	NG	2	133.6
Louisiana Generating LLC	Pointe Coupee	Big Cajun 2	22	ST	SUB	2	638
Louisiana Generating LLC	Pointe Coupee	Big Cajun 2	22	ST	SUB	3	632.5
Louisiana Generating LLC	Pointe Coupee	Big Cajun 2	22	ST	SUB	2	632.5
Louisiana Tech University	Lincoln	Louisiana Tech University Powe	611	ST	NG	4	2.5
Louisiana Tech University	Lincoln	Louisiana Tech University Powe	611	ST	NG	4	5

Source:

EIA Electricity Historical Spreadsheets

Technology Assessment Division, Department of Natural Resources

EXHIBIT I

Alphabetical Listing of Electric Power Distribution and Generation Utilities and Cogeneration Facilities in Louisiana (2002)

Company	County	Plant Name	NAICS	Prime Mover	Energy Source 1	Sector	Nameplate Capacity (Megawatts)
Lyondell Chemical Co	Calcasieu	Lyondell Chemical Co Lake Char	325	ST	NG	7	4.3
M A Patout & Sons Ltd	Iberia	M A Patout Son Ltd	311	ST	AB	7	1
M A Patout & Sons Ltd	Iberia	M A Patout Son Ltd	311	ST	AB	7	2
Minden City of	Webster	Minden	22	ST	NG	1	12.5
Minden City of	Webster	Minden	22	ST	NG	1	12.5
Minden City of	Webster	Minden	22	IC	NG	1	10.3
Mobil Oil Corp-Chalmette	St Bernard	Chalmette Refinery LLC	32411	OT	OTH	7	5.7
Morgan City City of	St Mary	Morgan City	22	ST	NG	1	6
Morgan City City of	St Mary	Morgan City	22	ST	NG	1	6
Morgan City City of	St Mary	Morgan City	22	ST	NG	1	20.8
Morgan City City of	St Mary	Morgan City	22	ST	NG	1	37.5
Natchitoches City of	Natchitoches	Natchitoches	22	IC	NG	1	2.7
Natchitoches City of	Natchitoches	Natchitoches	22	IC	NG	1	2.7
Natchitoches City of	Natchitoches	Natchitoches	22	IC	NG	1	1.5
Natchitoches City of	Natchitoches	Natchitoches	22	ST	NG	1	26
Natchitoches City of	Natchitoches	Natchitoches	22	IC	NG	1	1.5
Natchitoches City of	Natchitoches	Natchitoches	22	ST	NG	1	12.6
Natchitoches City of	Natchitoches	Natchitoches	22	ST	NG	1	6
Nelson Industrial Steam Co	Calcasieu Parish	Nelson Industrial Steam Co	22	ST	PC	3	113.6
Nelson Industrial Steam Co	Calcasieu Parish	Nelson Industrial Steam Co	22	ST	PC	3	113.6
NRG South Central Generatg LLC	Ouachita	NRG Sterlington Power LLC	22	GT	NG	2	25
NRG South Central Generatg LLC	Ouachita	NRG Sterlington Power LLC	22	GT	NG	2	25
NRG South Central Generatg LLC	Ouachita	NRG Sterlington Power LLC	22	GT	NG	2	25
NRG South Central Generatg LLC	Ouachita	NRG Sterlington Power LLC	22	GT	NG	2	25
NRG South Central Generatg LLC	Ouachita	NRG Sterlington Power LLC	22	GT	NG	2	25
NRG South Central Generatg LLC	Ouachita	NRG Sterlington Power LLC	22	GT	NG	2	25
NRG South Central Generatg LLC	Ouachita	NRG Sterlington Power LLC	22	GT	NG	2	16
NRG South Central Generatg LLC	Ouachita	NRG Sterlington Power LLC	22	GT	NG	2	25
NRG South Central Generatg LLC	Ouachita	NRG Sterlington Power LLC	22	GT	NG	2	25
Ouachita Operating Services LL	Ouachita	Ouachita	22	CA	NG	2	179.3
Ouachita Operating Services LL	Ouachita	Ouachita	22	CA	NG	2	179.3
Ouachita Operating Services LL	Ouachita	Ouachita	22	CA	NG	2	122
Ouachita Operating Services LL	Ouachita	Ouachita	22	CT	NG	2	179.3
Ouachita Operating Services LL	Ouachita	Ouachita	22	CT	NG	2	179.3
Ouachita Operating Services LL	Ouachita	Ouachita	22	CT	NG	2	179.3
PCS Nitrogen LP	Iberville Parish	PCS Nitrogen Fertilizer LP	325	GT	NG	7	26
Perryville Energy Partners	Ouachita	Perryville	421	CT	NG	2	172.9
Perryville Energy Partners	Ouachita	Perryville	421	CA	WH	2	187.4
Perryville Energy Partners	Ouachita	Perryville	421	CT	NG	2	172.9

Source:

EIA Electricity Historical Spreadsheets

Technology Assessment Division, Department of Natural Resources

EXHIBIT I

Alphabetical Listing of Electric Power Distribution and Generation Utilities and Cogeneration Facilities in Louisiana (2002)

Company	County	Plant Name	NAICS	Prime Mover	Energy Source 1	Sector	Nameplate Capacity (Megawatts)
Placid Refining Co LLC	West Baten Rouge	Port Allen	32411	GT	NG	7	3.8
Placid Refining Co LLC	West Baten Rouge	Port Allen	32411	GT	NG	7	3.8
Plaquemine City of	Iberville	Plaquemine	22	ST	NG	1	20
Plaquemine City of	Iberville	Plaquemine	22	ST	NG	1	24
PPG Industries Inc	Calcasieu	Plant C Caustic	325	ST	WH	7	3.4
PPG Industries Inc	Calcasieu	Powerhouse A	325	ST	NG	7	7.5
PPG Industries Inc	Calcasieu	Powerhouse A	325	ST	NG	7	7.5
PPG Industries Inc	Calcasieu	Powerhouse A	325	ST	NG	7	20
PPG Industries Inc	Calcasieu	Powerhouse A	325	ST	NG	7	7.5
PPG Industries Inc	Calcasieu	Powerhouse A	325	ST	NG	7	10
PPG Industries Inc	Calcasieu	PPG Powerhouse C	325	CT	NG	7	73.1
PPG Industries Inc	Calcasieu	PPG Powerhouse C	325	CT	NG	7	73.1
PPG Industries Inc	Calcasieu	PPG Powerhouse C	325	CA	WH	7	57.1
PPG Industries Inc	Calcasieu	PPG Powerhouse C	325	CT	NG	7	77.2
PPG Industries Inc	Calcasieu	PPG Powerhouse C	325	CT	NG	7	77.2
PPG Industries Inc	Calcasieu	PPG Riverside	325	ST	NG	7	35
PPG Industries Inc	Calcasieu	PPG Riverside	325	ST	NG	7	82
PPG Industries Inc	Calcasieu	PPG Riverside	325	ST	NG	7	45
Rayne City of	Acadia	Rayne	22	IC	NG	1	4.1
Rayne City of	Acadia	Rayne	22	IC	NG	1	4.1
Reliant Energy Field Services	Bossier	Reliant Energy Field Services	324	IC	NG	7	0.2
Reliant Energy Field Services	Bossier	Reliant Energy Field Services	324	IC	NG	7	0.2
Reliant Energy Field Services	Bossier	Reliant Energy Field Services	324	IC	NG	7	0.4
Reliant Energy Field Services	Bossier	Reliant Energy Field Services	324	IC	NG	7	0.4
Riverwood International Corp	Ouachita	Plant 31 Paper Mill	32213	ST	NG	7	6
Riverwood International Corp	Ouachita	Plant 31 Paper Mill	32213	ST	NG	7	6
Riverwood International Corp	Ouachita	Plant 31 Paper Mill	32213	ST	NG	7	6
Riverwood International Corp	Ouachita	Plant 31 Paper Mill	32213	ST	NG	7	20
Riverwood International Corp	Ouachita	Plant 31 Paper Mill	32213	ST	NG	7	25
Ruston City of	Lincoln	Ruston	22	ST	NG	1	12.6
Ruston City of	Lincoln	Ruston	22	ST	NG	1	26.8
Ruston City of	Lincoln	Ruston	22	ST	NG	1	41.5
Southwestern Electric Power Co	Caddo	Arsenal Hill	22	ST	NG	1	125
Southwestern Electric Power Co	Caddo	Lieberman	22	ST	NG	1	25
Southwestern Electric Power Co	Caddo	Lieberman	22	ST	NG	1	25
Southwestern Electric Power Co	Caddo	Lieberman	22	ST	NG	1	114
Southwestern Electric Power Co	Caddo	Lieberman	22	ST	NG	1	114
Stone Container Corp	Jackson	Hodge Louisiana	322122	ST	NG	7	3
Stone Container Corp	Jackson	Hodge Louisiana	322122	ST	NG	7	27.5

Source:

EIA Electricity Historical Spreadsheets

Technology Assessment Division, Department of Natural Resources

EXHIBIT I

Alphabetical Listing of Electric Power Distribution and Generation Utilities and Cogeneration Facilities in Louisiana (2002)

Company	County	Plant Name	NAICS	Prime Mover	Energy Source 1	Sector	Nameplate Capacity (Megawatts)
Stone Container Corp	Jackson	Hodge Louisiana	322122	ST	NG	7	23.3
Stone Container Corp	Jackson	Hodge Louisiana	322122	ST	NG	7	15.6
Stone Container Corp	Jackson	Hodge Louisiana	322122	ST	NG	7	5
Taft Cogeneration LP	St Charles	Taft Cogeneration Facility	325	CT	NG	7	170
Taft Cogeneration LP	St Charles	Taft Cogeneration Facility	325	CT	NG	7	170
Taft Cogeneration LP	St Charles	Taft Cogeneration Facility	325	CT	NG	7	170
Taft Cogeneration LP	St Charles	Taft Cogeneration Facility	325	CA	NG	7	325
TEMBEC	West Feliciana	St Francisville Mill	322122	GT	NG	7	45
TEMBEC	West Feliciana	St Francisville Mill	322122	ST	BLQ	7	12.5
Terrebonne Parish Consol Govt	Terrebonne	Houma	22	IC	NG	1	4.5
Terrebonne Parish Consol Govt	Terrebonne	Houma	22	ST	NG	1	12.6
Terrebonne Parish Consol Govt	Terrebonne	Houma	22	IC	NG	1	4.5
Terrebonne Parish Consol Govt	Terrebonne	Houma	22	ST	NG	1	25.5
Terrebonne Parish Consol Govt	Terrebonne	Houma	22	IC	NG	1	1.4
Terrebonne Parish Consol Govt	Terrebonne	Houma	22	IC	NG	1	1.4
Terrebonne Parish Consol Govt	Terrebonne	Houma	22	IC	NG	1	4.5
Terrebonne Parish Consol Govt	Terrebonne	Houma	22	IC	NG	1	2.7
Terrebonne Parish Consol Govt	Terrebonne	Houma	22	IC	NG	1	1.4
Terrebonne Parish Consol Govt	Terrebonne	Houma	22	ST	NG	1	40.8
The American Sugar Refining Co	St Bernard	Domino Sugar Arabi	311	ST	NG	7	5
The American Sugar Refining Co	St Bernard	Domino Sugar Arabi	311	ST	NG	7	4
Tosco Refining Co	Plaquemines	Alliance Refinery	32411	OT	OG	7	6
Tosco Refining Co	Plaquemines	Alliance Refinery	32411	ST	OG	7	19
Vulcan Materials Co	Ascension	Geismar	325188	CT	NG	7	45
Vulcan Materials Co	Ascension	Geismar	325188	CT	NG	7	45
Vulcan Materials Co	Ascension	Geismar	325188	CA	NG	7	23
Western Gas Resources Inc	ST. Bernard Parish	Toca	324	IC	NG	7	0.8
Western Gas Resources Inc	ST. Bernard Parish	Toca	324	IC	NG	7	0.7
Western Gas Resources Inc	ST. Bernard Parish	Toca	324	IC	NG	7	0.5
Western Gas Resources Inc	ST. Bernard Parish	Toca	324	IC	NG	7	0.8
							28504.1

Source:

EIA Electricity Historical Spreadsheets

Technology Assessment Division, Department of Natural Resources

EXHIBIT II
Electricity Distribution Utilities in Louisiana (2002)
Ultimate Customers All Sectors

**Class of Ownership, Number of Bundled Ultimate Consumers, Revenue, Sales, and
Average Revenue per Kilowatthour for All Sectors by State and Utility, 2002**

State Electric Utility	Class of Ownership	Number of Consumers	Revenue (thousand dollars)	Sales (thousand kilowatthours)	Average Revenue per kilowatthour (cents)
Louisiana					
Abbeville City of	Publicly Owned	5,195	9,923	122,600	8.09
Alexandria City of	Publicly Owned	23,731	27,027	635,091	4.26
Ashley Chicot Elec Coop, Inc	Cooperative	112	129	1,557	8.29
Beauregard Electric Coop,	Cooperative	34,914	46,083	716,994	6.43
Boyce Town of	Publicly Owned	447	570	6,885	8.28
Claiborne Electric Coop, Inc	Cooperative	22,022	32,596	518,032	6.29
Cleco Power LLC	Investor-Owned	254,260	532,226	8,470,579	6.28
Concordia Electric Coop, Inc	Cooperative	12,209	13,342	169,130	7.89
Dixie Electric Membership	Cooperative	79,498	105,800	1,525,451	6.94
Elizabeth Town of	Publicly Owned	271	342	3,663	9.34
Entergy Gulf States Inc	Investor-Owned	338,362	1,067,192	18,772,582	5.68
Entergy Louisiana Inc	Investor-Owned	648,757	1,713,276	29,566,325	5.79
Entergy New Orleans Inc	Investor-Owned	190,273	414,849	5,877,846	7.06
Erath City of	Publicly Owned	972	1,415	16,171	8.75
Gueydan Town of	Publicly Owned	850	1,069	14,602	7.32
Jefferson Davis Elec Coop,	Cooperative	10,047	14,766	206,317	7.16
Jonesville City of	Publicly Owned	1,364	2,424	23,540	10.30
Kaplan City of	Publicly Owned	1,979	3,733	39,150	9.54
Lafayette City of	Publicly Owned	55,244	103,443	1,755,595	5.89
Minden City of	Publicly Owned	6,357	10,585	135,788	7.80
Morgan City City of	Publicly Owned	6,296	11,587	171,522	6.76
Natchitoches City of	Publicly Owned	7,685	17,785	265,063	6.71
New Roads City of	Publicly Owned	1,960	3,093	38,018	8.14
Northeast Louisiana Power	Cooperative	15,098	16,474	237,616	6.93
Panola-Harrison Elec Coop,	Cooperative	8,162	8,317	143,121	5.81
Plaquemine City of	Publicly Owned	4,273	6,788	86,523	7.85
Pointe Coupee Elec Member	Cooperative	9,572	14,360	230,812	6.22
Rayne City of	Publicly Owned	3,841	5,805	70,398	8.25
Ruston City of	Publicly Owned	9,147	19,471	244,184	7.97

Source:

EIA Electricity Historical Spreadsheets Technology Assessment Division, Department of Natural Resources

EXHIBIT II
Electricity Distribution Utilities in Louisiana (2002)
Ultimate Customers All Sectors

State Electric Utility	Class of Ownership	Number of Consumers	Revenue (thousand dollars)	Sales (thousand kilowatthours)	Average Revenue per kilowatthour (cents)
South Louisiana Elec Coop	Cooperative	18,045	28,031	451,000	6.22
Southwest Louisiana E M C	Cooperative	80,395	104,536	1,704,159	6.13
Southwestern Electric Power	Investor-Owned	167,339	273,318	5,156,957	5.30
St Martinville City of	Publicly Owned	2,894	5,065	52,983	9.56
Terrebonne Parish Consol	Publicly Owned	10,913	22,966	296,689	7.74
Valley Electric Member Corp	Cooperative	29,203	38,931	549,000	7.09
Vidalia Town of	Publicly Owned	2,669	5,334	73,262	7.28
Vinton Town of	Publicly Owned	1,548	2,617	26,516	9.87
Washington-St Tammany E	Cooperative	40,114	53,689	780,665	6.88
Welsh Town of	Publicly Owned	1,639	1,791	34,354	5.21
Winnfield City of	Publicly Owned	3,111	5,652	70,249	8.05
State Total		2,110,768	4,746,400	79,260,989	5.99

Source:

EIA Electricity Historical Spreadsheets

Technology Assessment Division, Department of Natural Resources

EXHIBIT II
Electricity Distribution Utilities in Louisiana (2002)
Industrial Sector Customers

**Class of Ownership, Number of Bundled Ultimate Consumers, Revenue, Sales, and
Average Revenue per Kilowatthour for the Industrial Sector by State Utility, 2002**

State Electric Utility	Class of Ownership	Number of Consumers	Revenue (thousand dollars)	Sales (thousand kilowatthours)	Average Revenue per kilowatthour
Louisiana					
Abbeville City of	Publicly Owned	19	2,460	39,236	6.27
Claiborne Electric Coop, Inc	Cooperative	6	6,867	139,087	4.94
Cleco Power LLC	Investor-Owned	730	128,296	2,756,212	4.65
Concordia Electric Coop, Inc	Cooperative	4	1,097	7,128	15.39
Dixie Electric Membership Corp	Cooperative	297	10,119	178,199	5.68
Entergy Gulf States Inc	Investor-Owned	3,694	424,026	9,714,398	4.36
Entergy Louisiana Inc	Investor-Owned	7,034	636,410	14,737,545	4.32
Entergy New Orleans Inc	Investor-Owned	1,103	24,657	409,152	6.03
Gueydan Town of	Publicly Owned	31	273	3,019	9.04
Jefferson Davis Elec Coop, Inc	Cooperative	5	1,829	26,609	6.87
Kaplan City of	Publicly Owned	23	683	7,664	8.91
Minden City of	Publicly Owned	29	2,259	33,081	6.83
Natchitoches City of	Publicly Owned	4	4,703	91,645	5.13
New Roads City of	Publicly Owned	1	8	100	8.00
Northeast Louisiana Power Coop	Cooperative	47	1,429	18,349	7.79
Panola-Harrison Elec Coop, Inc	Cooperative	3	372	7,677	4.85
Plaquemine City of	Publicly Owned	198	2,094	29,450	7.11
Pointe Coupee Elec Member Corp	Cooperative	7	3,711	80,582	4.61
Rayne City of	Publicly Owned	7	235	4,048	5.81
Ruston City of	Publicly Owned	55	710	29,107	2.44
South Louisiana Elec Coop Assn	Cooperative	10	2,512	43,000	5.84
Southwest Louisiana E M C	Cooperative	15	6,777	135,232	5.01
Southwestern Electric Power Co	Investor-Owned	1,955	42,998	1,077,504	3.99
St Martinville City of	Publicly Owned	133	1,886	19,401	9.72
Valley Electric Member Corp	Cooperative	1	665	14,000	4.75
Vidalia Town of	Publicly Owned	3	1,300	28,757	4.52
Washington-St Tammany E C, Inc	Cooperative	4	1,399	22,447	6.23
Welsh Town of	Publicly Owned	11	145	5,695	2.55
Winnfield City of	Publicly Owned	6	277	3,385	8.18
State Total		15,435	1,310,197	29,661,709	4.42

Source:

EIA Electricity Historical Spreadsheets Technology Assessment Division, Department of Natural Resources

EXHIBIT II
Electricity Distribution Utilities in Louisiana (2002)
Commercial Sector Customers

**Class of Ownership, Number of Bundled Ultimate Consumers, Revenue, Sales, and
Average Revenue per Kilowatthour for the Commercial Sector by State
Utility, 2002**

State Electric Utility	Class of Ownership	Number of Consumers	Revenue (thousand dollars)	Sales (thousand kilowatthours)	Average Revenue per kilowatthour (cents)
Louisiana					
Abbeville City of	Publicly Owned	811	2,752	29,542	9.32
Alexandria City of	Publicly Owned	2,789	14,856	353,826	4.20
Ashley Chicot Elec Coop, Inc	Cooperative	4	2	11	18.18
Beauregard Electric Coop, Inc	Cooperative	2,188	10,165	212,176	4.79
Boyce Town of	Publicly Owned	41	118	1,473	8.01
Claiborne Electric Coop, Inc	Cooperative	2,190	6,577	100,751	6.53
Cleco Power LLC	Investor-Owned	30,720	116,214	1,721,711	6.75
Concordia Electric Coop, Inc	Cooperative	1,597	3,509	37,591	9.33
Dixie Electric Membership Corp	Cooperative	4,916	7,993	111,168	7.19
Elizabeth Town of	Publicly Owned	23	55	620	8.87
Entergy Gulf States Inc	Investor-Owned	42,127	286,408	4,316,062	6.64
Entergy Louisiana Inc	Investor-Owned	70,351	403,051	5,538,479	7.28
Entergy New Orleans Inc	Investor-Owned	16,475	153,776	2,255,283	6.82
Erath City of	Publicly Owned	141	465	5,315	8.75
Gueydan Town of	Publicly Owned	108	184	2,505	7.35
Jefferson Davis Elec Coop, Inc	Cooperative	1,428	4,631	58,947	7.86
Jonesville City of	Publicly Owned	352	1,280	11,575	11.06
Kaplan City of	Publicly Owned	255	954	9,860	9.68
Lafayette City of	Publicly Owned	7,287	55,506	951,276	5.83
Minden City of	Publicly Owned	1,023	3,673	41,100	8.94
Morgan City City of	Publicly Owned	1,255	6,397	97,135	6.59
Natchitoches City of	Publicly Owned	933	6,702	87,966	7.62
New Roads City of	Publicly Owned	296	1,310	15,700	8.34
Northeast Louisiana Power	Cooperative	2,582	2,714	31,350	8.66
Panola-Harrison Elec Coop, Inc	Cooperative	515	720	11,228	6.41
Plaquemine City of	Publicly Owned	331	552	5,042	10.95
Pointe Coupee Elec Member	Cooperative	1,830	3,027	39,941	7.58
Rayne City of	Publicly Owned	447	2,044	24,447	8.36
Ruston City of	Publicly Owned	1,123	2,107	69,611	3.03

Source:

EIA Electricity Historical Spreadsheets Technology Assessment Division, Department of Natural Resources

EXHIBIT II
Electricity Distribution Utilities in Louisiana (2002)
Commercial Sector Customers

State Electric Utility	Class of Ownership	Number of Consumers	Revenue (thousand dollars)	Sales (thousand kilowatthours)	Average Revenue per kilowatthour (cents)
South Louisiana Elec Coop	Cooperative	2,270	10,250	160,000	6.41
Southwest Louisiana E M C	Cooperative	6,117	17,643	256,707	6.87
Southwestern Electric Power Co	Investor-Owned	15,921	85,880	1,725,381	4.98
St Martinville City of	Publicly Owned	277	260	2,524	10.30
Terrebonne Parish Consol Gov't	Publicly Owned	1,745	10,953	143,168	7.65
Valley Electric Member Corp	Cooperative	1,512	5,474	74,000	7.40
Vidalia Town of	Publicly Owned	305	1,598	17,261	9.26
Vinton Town of	Publicly Owned	239	956	9,430	10.14
Washington-St Tammany E C,	Cooperative	2,412	7,860	119,324	6.59
Welsh Town of	Publicly Owned	158	304	4,768	6.38
Winnfield City of	Publicly Owned	624	2,677	31,627	8.46
State Total		225,718	1,241,597	18,685,881	6.64

Source:

EIA Electricity Historical Spreadsheets

Technology Assessment Division, Department of Natural Resources

EXHIBIT II
Electricity Distribution Utilities in Louisiana (2002)
Residential Sector Customers

**Class of Ownership, Number of Bundled Ultimate Consumers, Revenue, Sales, and
Average Revenue per Kilowatthour for the Residential Sector by State
Utility, 2002**

State Electric Utility	Class of Ownership	Number of Consumers	Revenue (thousand dollars)	Sales (thousand kilowatthours)	Average Revenue per kilowatthour (cents)
Louisiana					
Abbeville City of	Publicly Owned	4,249	4,189	48,447	8.65
Alexandria City of	Publicly Owned	20,939	12,170	281,236	4.33
Ashley Chicot Elec Coop, Inc	Cooperative	108	127	1,546	8.21
Beauregard Electric Coop, Inc	Cooperative	32,716	35,854	504,045	7.11
Boyce Town of	Publicly Owned	406	452	5,412	8.35
Claiborne Electric Coop, Inc	Cooperative	19,816	19,076	277,325	6.88
Cleco Power LLC	Investor-Owned	216,595	247,877	3,400,026	7.29
Concordia Electric Coop, Inc	Cooperative	10,553	8,633	123,311	7.00
Dixie Electric Membership Corp	Cooperative	74,123	87,398	1,231,937	7.09
Elizabeth Town of	Publicly Owned	220	227	2,929	7.75
Entergy Gulf States Inc	Investor-Owned	291,053	339,325	4,519,927	7.51
Entergy Louisiana Inc	Investor-Owned	565,882	637,901	8,780,158	7.27
Entergy New Orleans Inc	Investor-Owned	171,064	170,517	2,158,084	7.90
Erath City of	Publicly Owned	831	950	10,856	8.75
Gueydan Town of	Publicly Owned	711	612	9,078	6.74
Jefferson Davis Elec Coop, Inc	Cooperative	8,572	8,283	120,539	6.87
Jonesville City of	Publicly Owned	1,012	1,144	11,965	9.56
Kaplan City of	Publicly Owned	1,701	2,096	21,626	9.69
Lafayette City of	Publicly Owned	45,822	43,103	734,397	5.87
Minden City of	Publicly Owned	5,305	4,653	61,607	7.55
Morgan City City of	Publicly Owned	5,041	5,190	74,387	6.98
Natchitoches City of	Publicly Owned	6,666	5,880	79,410	7.40
New Roads City of	Publicly Owned	1,609	1,620	19,518	8.30
Northeast Louisiana Power	Cooperative	10,835	10,990	175,057	6.28
Panola-Harrison Elec Coop, Inc	Cooperative	7,484	6,844	117,896	5.81
Plaquemine City of	Publicly Owned	3,744	4,142	52,031	7.96
Pointe Coupee Elec Member	Cooperative	7,593	7,468	107,832	6.93
Rayne City of	Publicly Owned	3,387	3,526	41,903	8.41
Ruston City of	Publicly Owned	7,704	2,475	91,488	2.71

Source:

EIA Electricity Historical Spreadsheets Technology Assessment Division, Department of Natural Resources

EXHIBIT II
Electricity Distribution Utilities in Louisiana (2002)
Residential Sector Customers

State Electric Utility	Class of Ownership	Number of Consumers	Revenue (thousand dollars)	Sales (thousand kilowatthours)	Average Revenue per kilowatthour (cents)
South Louisiana Elec Coop	Cooperative	15,609	14,797	244,000	6.06
Southwest Louisiana E M C	Cooperative	74,263	80,116	1,312,220	6.11
Southwestern Electric Power Co	Investor-Owned	148,402	132,786	2,154,103	6.16
St Martinville City of	Publicly Owned	2,484	2,919	31,058	9.40
Terrebonne Parish Consol Gov't	Publicly Owned	9,168	12,013	153,521	7.82
Valley Electric Member Corp	Cooperative	27,675	32,705	460,000	7.11
Vidalia Town of	Publicly Owned	2,318	2,341	26,141	8.96
Vinton Town of	Publicly Owned	1,304	1,605	16,152	9.94
Washington-St Tammany E C,	Cooperative	37,674	44,339	637,906	6.95
Welsh Town of	Publicly Owned	1,469	1,314	22,781	5.77
Winnfield City of	Publicly Owned	2,481	2,698	35,237	7.66
State Total		1,848,588	2,000,355	28,157,092	7.10

Source:

EIA Electricity Historical Spreadsheets

Technology Assessment Division, Department of Natural Resources

EXHIBIT III
Investor Owned Utilities in Louisiana (2002)

Summary Page Investor Owned Utilities	Generator Capacity	Generator Nameplate Age Profile, Categories of Years						Generation	Sales	Number of
<u>Company</u>	<u>Summer, MW</u>	<u>0-10</u>	<u>20-Nov</u>	<u>21-30</u>	<u>31-40</u>	<u>41-50</u>	<u>>50</u>	<u>2002 (000kwh)</u>	<u>(000kwh)</u>	<u>Consumers</u>
Cleco Power LLC	2,050.0	0	650	963	366	48	23	9,739,251		
CLECO Evangeline LLC	773	472	0	0	191	110	0	5,376		
CLECO, total	2,823.0	472.0	650.0	963.0	557.0	158.0	23.0	9,744,627	8,470,579	254,260
Entergy Gulf States Inc	4,476.8	0.0	0.0	1,570.0	1,980.0	771.8	155.0	8,983,325	18,772,582	338,362
Entergy Louisiana Inc	5,496.0	0.0	1,821.0	1,138.0	1,827.0	600.0	110.0	11,093,145	29,566,325	648,757
Entergy New Orleans Inc	958.0	0.0	0.0	0.0	541.0	367.0	50.0	2,504,214	5,877,846	190,273
Southwestern Electric Power Co	381.0	0.0	0.0	0.0	0.0	330.0	51.0	230,094	5,156,957	167,339
Total	14,134.8	944.0	2,471.0	3,671.0	5,096.0	2,336.8	389.0	32,560,781	67,844,289	1,598,991

Source:

EIA Electricity Historical Spreadsheets

Technology Assessment Division, Department of Natural Resources

EXHIBIT III
Investor Owned Utilities in Louisiana (2002)

CLECO (CLECO Evangline LLC and CLECO Power LLC)

<u>Parish</u>	<u>Plant Name</u>	<u>Generation Capacity MW</u>			<u>Energy Source(s)</u>			<u>Initial Date of Operation</u>		
		<u>Nameplate</u>	<u>Summer</u>	<u>Winter</u>	<u>Prime Mover</u>	<u>Source 1</u>	<u>Source 2</u>	<u>Source 3</u>	<u>Month</u>	<u>Year</u>
Evangeline	Evangeline Powe	188.7	158.0	175.0	CT	NG			6	2000
Evangeline	Evangeline Powe	188.7	156.0	175.0	CT	NG			6	2000
Evangeline	Evangeline Powe	188.7	158.0	175.0	CT	NG			6	2000
Evangeline	Evangeline Powe	124.9	110.0	110.0	CA	NG			4	1961
Evangeline	Evangeline Powe	243.1	191.0	191.0	CA	NG			2	1966
De Soto	Dolet Hills	720.7	650.0	650.0	ST	LIG	NG	PG	4	1986
St Mary	Franklin	10.0	7.0	7.0	GT	NG	DFO		1	1973
Rapides	Rodemacher	445.5	440.0	440.0	ST	NG	RFO	DFO	6	1975
Rapides	Rodemacher	558.0	523.0	523.0	ST	SUB	NG		8	1982
St Mary	Teche	24.9	23.0	23.0	ST	NG			7	1953
St Mary	Teche	54.4	48.0	48.0	ST	NG			5	1956
St Mary	Teche	348.5	359.0	359.0	ST	NG	DFO		3	1971
			2,823.0							

Jointly Owned Electric Generating Units, by Company, by Plant 2002

<u>Company, Plant</u>	<u>Unit ID</u>	<u>Net Summer Capability, M</u>	<u>Unit Type</u>	<u>Primary Energy Source</u>	<u>Unit Status</u>	<u>Date</u>	<u>Percent Owned</u>	<u>Owner Companies</u>
CLECO Utility Group Inc								
Dolet Hills (DeSoto Parish)	1	650	ST	LIG	OP	1986	50.0%	CLECO SWEPCO
Rodemacher (Rapides Parish)	2	523	ST	SUB	OP	1982	30.0%	CLECO
							50.0%	Lafayette Public Power Authority
							20.0%	Louisiana Energy & Power Authority

Source:

EIA Electricity Historical Spreadsheets Technology Assessment Division, Department of Natural Resources

EXHIBIT III
Investor Owned Utilities in Louisiana (2002)

Entergy Gulf States Inc

<u>Parish</u>	<u>Plant Name</u>	<u>Generation Capacity MW</u>			<u>Energy Source(s)</u>			<u>Initial Date of Operation</u>	
		<u>Nameplate</u>	<u>Summer</u>	<u>Winter</u>	<u>Prime Mover</u>	<u>Source 1</u>	<u>Source 2</u>	<u>Source 3</u>	<u>Month</u>
East Baton Rouge	Louisiana 1	23.0	15.0	15.0	ST	NG	DFO	10	1951
East Baton Rouge	Louisiana 1	62.5	75.0	75.0	ST	NG	DFO	12	1954
East Baton Rouge	Louisiana 1	63.0	38.0	38.0	ST	NG	DFO	9	1954
East Baton Rouge	Louisiana 1	101.0	90.0	90.0	GT	NG	OG	9	1982
East Baton Rouge	Louisiana 1	160.0	148.8	150.4	ST	NG			1954
East Baton Rouge	Louisiana 2	50.0	40.0	40.0	ST	NG		1	1950
East Baton Rouge	Louisiana 2	50.0	40.0	40.0	ST	NG		11	1950
East Baton Rouge	Louisiana 2	75.0	60.0	60.0	ST	NG		5	1953
Calcasieu	R S Nelson	163.2	153.0	154.0	ST	NG		1	1960
Calcasieu	R S Nelson	591.8	500.0	500.0	ST	NG	RFO	7	1970
Calcasieu	R S Nelson	614.6	550.0	550.0	ST	SUB		1	1982
West Feliciana	River Bend	1,035.9	980.0	1,006.0	ST	NUC		1	1986
Iberville	Willow Glen	163.2	152.0	155.0	ST	NG		1	1960
Iberville	Willow Glen	239.4	205.0	205.0	ST	NG		1	1960
Iberville	Willow Glen	591.8	450.0	460.0	ST	NG	RFO	1	1968
Iberville	Willow Glen	591.8	480.0	500.0	ST	NG	RFO	1	1973
Iberville	Willow Glen	591.8	500.0	500.0	ST	NG	RFO	1	1976
			4,476.8						

<u>Company, Plant</u>	<u>Unit ID</u>	<u>Net Summer Capability, M</u>	<u>Unit Type</u>	<u>Primary Energy Source</u>	<u>Unit Status</u>	<u>Date</u>	<u>Percent Owned</u>	<u>Owner Companies</u>
Entergy Gulf States Inc. Nelson Coal (Calcasieu Parish)	6	550	ST	SUB	OP	1982	70.0% 20.0% 10.0%	Entergy Gulf States Inc Sam Rayburn Municipal Power Agcy Sam Rayburn G & T Inc
R S Nelson (Calcasieu Parish)	1	98	ST	Nat Gas	OP	1959		
	2	98	ST	Nat Gas	OP	1956	36.1% 1.0% 13.4% 49.5%	Conoco Inc Entergy Gulf States inc Vista Energy Ltd Partnership Citgo Petroleum Corp
Riverbend (West Feliciana Parish)	1	936	NB	Uranium	OP	1986	70.0% 30.0%	Entergy Gulf states Inc Entergy Power Inc

Source:

EIA Electricity Historical Spreadsheets

Technology Assessment Division, Department of Natural Resources

EXHIBIT III
Investor Owned Utilities in Louisiana (2002)

Entergy Louisiana Inc

<u>Parish</u>	<u>Plant Name</u>	<u>Generation Capacity MW</u>			<u>Energy Source(s)</u>			<u>Initial Date of Operation</u>		
		<u>Nameplate</u>	<u>Summer</u>	<u>Winter</u>	<u>Prime Mover</u>	<u>Source 1</u>	<u>Source 2</u>	<u>Source 3</u>	<u>Month</u>	<u>Year</u>
Plaquemines	Buras	20.7	12.0	12.0	GT	NG	DFO		2	1971
St Charles	Little Gypsy	247.7	244.0	244.0	ST	NG	DFO		3	1961
St Charles	Little Gypsy	420.7	415.0	415.0	ST	NG	DFO		4	1966
St Charles	Little Gypsy	582.2	545.0	560.0	ST	NG	DFO		3	1969
Ouachita	Monroe	25.0	21.0	21.0	ST	NG	DFO		1	1963
Ouachita	Monroe	37.5	26.0	26.0	ST	NG	DFO		1	1965
Ouachita	Monroe	75.0	70.0	70.0	ST	NG	DFO		1	1968
Jefferson	Nine Mile Point	69.0	50.0	50.0	ST	NG	RFO		5	1951
Jefferson	Nine Mile Point	112.5	60.0	60.0	ST	NG	RFO		7	1953
Jefferson	Nine Mile Point	169.8	125.0	128.0	ST	NG	RFO		11	1955
Jefferson	Nine Mile Point	895.1	740.0	750.0	ST	NG	DFO		6	1973
Jefferson	Nine Mile Point	895.1	730.0	740.0	ST	NG	DFO		3	1992
Ouachita	Sterlington	247.7	210.0	220.0	ST	NG	DFO		6	1958
Ouachita	Sterlington	233.0	187.0	198.0	CT	NG	DFO		9	1974
Ouachita	Sterlington	66.0	47.0	49.0	CT	NG	DFO		9	1974
Ouachita	Sterlington	101.0	93.0	101.0	CA	NG			9	1974
Lafourche	Thibodaux	21.0	19.0	19.0	ST	NG	RFO		0	1968
St Charles	Waterford 1 & 2	445.5	400.0	411.0	ST	NG	RFO		7	1975
St Charles	Waterford 1 & 2	445.5	411.0	411.0	ST	NG	RFO		10	1975
St Charles	Waterford 3	1,199.8	1,091.0	1,103.0	ST	NUC			9	1985
			5,496.0							

Source:

EIA Electricity Historical Spreadsheets

Technology Assessment Division, Department of Natural Resources

EXHIBIT III
Investor Owned Utilities in Louisiana (2002)

Entergy New Orleans (NOPSI)

<u>Parish</u>	<u>Plant Name</u>	<u>Generation Capacity MW</u>			<u>Energy Source(s)</u>			<u>Initial Date of Operation</u>		
		<u>Nameplate</u>	<u>Summer</u>	<u>Winter</u>	<u>Prime Mover</u>	<u>Source 1</u>	<u>Source 2</u>	<u>Source 3</u>	<u>Month</u>	<u>Year</u>
Orleans	A B Paterson	51.7	50.0	50.0	ST	NG	RFO		4	1950
Orleans	A B Paterson	81.2	72.0	72.0	ST	NG	RFO		12	1954
Orleans	A B Paterson	16.0	11.0	11.0	GT	DFO			9	1967
Orleans	Michoud	115.2	65.0	65.0	ST	NG	RFO		5	1957
Orleans	Michoud	261.8	230.0	240.0	ST	NG	RFO		2	1963
Orleans	Michoud	582.2	530.0	515.0	ST	NG	RFO		8	1967
			958.0							

Source:

EIA Electricity Historical Spreadsheets

Technology Assessment Division, Department of Natural Resources

EXHIBIT III
Investor Owned Utilities in Louisiana (2002)

Southwestern Electric Power Company

<u>Parish</u>	<u>Plant Name</u>	<u>Generation Capacity MW</u>			<u>Energy Source(s)</u>			<u>Initial Date of Operation</u>		
		<u>Nameplate</u>	<u>Summer</u>	<u>Winter</u>	<u>Prime Mover</u>	<u>Source 1</u>	<u>Source 2</u>	<u>Source 3</u>	<u>Month</u>	<u>Year</u>
Caddo	Arsenal Hill	125.0	110.0	110.0	ST	NG			3	1960
Caddo	Lieberman	25.0	25.0	25.0	ST	NG			7	1947
Caddo	Lieberman	25.0	26.0	26.0	ST	NG			4	1949
Caddo	Lieberman	114.0	112.0	115.0	ST	NG	RFO		6	1957
Caddo	Lieberman	114.0	108.0	112.0	ST	NG	RFO		5	1959
			381.0							

Source:

EIA Electricity Historical Spreadsheets

Technology Assessment Division, Department of Natural Resources

EXHIBIT IV
Publicly Owned Electric Utilities in Louisiana with Generation Facilities (2002)
Louisiana Energy and Power Authority

Publicly Owned Utilities, and the Louisiana Energy and Power Authority (LEPA)

<u>City</u>	<u>Generator Capacity</u>	<u>Generator Nameplate Age Profile, Categories of Years</u>						<u>Generation</u>	<u>Sales</u>	<u>Number of</u>
	<u>Summer, MW</u>	<u>0-10</u>	<u>20-Nov</u>	<u>21-30</u>	<u>31-40</u>	<u>41-50</u>	<u>>50</u>	<u>2002 (000kwh)</u>	<u>(000kwh)</u>	<u>Consumers</u>
Abbeville City of	0							0	122,600	5,195
Alexandria City of	157			78	47	32		0	635,091	23,731
Boyce Town of	0							0	6,885	447
Elizabeth Town of	0							0	3,663	271
Erath City of	0							0	16,171	972
Gueydan Town of	0							0	14,602	850
Jonesville City of	0							0	23,540	1,364
Kaplan City of	0							0	39,150	1,979
Lafayette City of	340			45	257		38	428,186	1,755,595	55,244
Minden City of	34				34			0	135,788	6,357
Morgan City City of	67			56	12			59,447	171,522	6,296
Natchitoches City of	53.2			39	13	1.5		0	265,063	7,685
New Roads City of	0							0	38,018	1,960
Plaquemine City of	0							0	86,523	4,273
Rayne City of	5				5			0	70,398	3,841
Ruston City of	77			40	25	12		5,025	244,184	9,147
St Martinville City of	0							0	52,983	2,894
Terrebonne Parish Consol Gov't	88.3			38.6	33.5	10.7	5.5	73,773	296,689	10,913
Vidalia Town of	0							0	73,262	2,669
Vinton Town of	0							0	26,516	1,548
Welsh Town of	0							0	34,354	1,639
Winnfield City of	0							0	70,249	3,111
Total	822			296	426	56	44	566,431	4,182,846	152,386
LEPA ^{1/}	8.7				3.9	2.6	2.2			

^{1/} Joint Ownership see EXHIBIT VII

Source:

EIA Electricity Historical Spreadsheets

Technology Assessment Division, Department of Natural Resources

EXHIBIT IV
 Publicly Owned Electric Utilities in Louisiana with Generation Facilities (2002)
 Louisiana Energy and Power Authority

City of Alexandria

<u>Parish</u>	<u>Plant Name</u>	<u>Generation Capacity MW</u>			<u>Energy Source(s)</u>			<u>Initial Date of Operation</u> <u>Month, Year</u>
		<u>Nameplate</u>	<u>Summer</u>	<u>Winter</u>	<u>Prime Mover</u>	<u>Source 1</u>	<u>Source 2</u>	
Rapides	DG Hunter	17.5	16	16	ST	NG	DFO	0-1956
Rapides	DG Hunter	17.5	16	16	ST	NG	DFO	0-1956
Rapides	DG Hunter	85	78	78	ST	NG	DFO	0-1974
Rapides	DG Hunter	55	47	47	ST	NG	DFO	0-1965
		175	157	157				

Source:

EIA Electricity Historical Spreadsheets

Technology Assessment Division, Department of Natural Resources

EXHIBIT IV
 Publicly Owned Electric Utilities in Louisiana with Generation Facilities (2002)
 Louisiana Energy and Power Authority

City of Lafayette

<u>Parish</u>	<u>Plant Name</u>	<u>Generation Capacity MW</u>			<u>Energy Source(s)</u>			<u>Initial Date of Operation</u> <u>Month, Year</u>
		<u>Nameplate</u>	<u>Summer</u>	<u>Winter</u>	<u>Prime Mover</u>	<u>Source 1</u>	<u>Source 2</u>	
Lafayette	Louis Doc Bonin	53.9	45	48	ST	NG	DFO	Jan-77
Lafayette	Louis Doc Bonin	100	84	88	ST	NG	DFO	Jun-70
Lafayette	Louis Doc Bonin	187	173	180	ST	NG	DFO	Apr-65
Lafayette	Rodemacher	13.3	13	13	ST	NG	DFO	0-1950
Lafayette	Rodemacher	25.4	25	25	ST	NG	DFO	0-1950
		379.6	340	354				

EXHIBIT IV
 Publicly Owned Electric Utilities in Louisiana with Generation Facilities (2002)
 Louisiana Energy and Power Authority

City of Minden

<u>Parish</u>	<u>Plant Name</u>	<u>Generation Capacity MW</u>			<u>Energy Source(s)</u>			<u>Initial Date of Operation</u> <u>Month, Year</u>
		<u>Nameplate</u>	<u>Summer</u>	<u>Winter</u>	<u>Prime Mover</u>	<u>Source 1</u>	<u>Source 2</u>	
Webster	Minden	12.5	12.5	12.5	ST	NG	DFO	99-1966
Webster	Minden	12.5	12.5	12.5	ST	NG	DFO	99-1968
Webster	Minden	10.3	8.7	8.7	IC	NG	DFO	0-1965
		35.3	33.7	33.7				

EXHIBIT IV
 Publicly Owned Electric Utilities in Louisiana with Generation Facilities (2002)
 Louisiana Energy and Power Authority

City of Morgan City

<u>Parish</u>	<u>Plant Name</u>	<u>Generation Capacity MW</u>			<u>Energy Source(s)</u>			<u>Initial Date of Operation</u> <u>Month, Year</u>
		<u>Nameplate</u>	<u>Summer</u>	<u>Winter</u>	<u>Prime Mover</u>	<u>Source 1</u>	<u>Source 2</u>	
St Mary	Morgan City	6	5.8	5.8	ST	NG		Jun-63
St Mary	Morgan City	6	5.8	5.8	ST	NG		Jun-63
St Mary	Morgan City	20.8	19.8	19.8	ST	NG		99-1970
St Mary	Morgan City	37.5	36	36	ST	NG		May-70
		70.3	67.4	67.4				

EXHIBIT IV
Publicly Owned Electric Utilities in Louisiana with Generation Facilities (2002)
Louisiana Energy and Power Authority

City of Natchitoches

<u>Parish</u>	<u>Plant Name</u>	<u>Generation Capacity MW</u>			<u>Energy Source(s)</u>			<u>Initial Date of Operation</u> <u>Month, Year</u>
		<u>Nameplate</u>	<u>Summer</u>	<u>Winter</u>	<u>Prime Mover</u>	<u>Source 1</u>	<u>Source 2</u>	
Natchitoches	Natchitoches	2.7	2.8	2.8	IC	NG	DFO	0-1962
Natchitoches	Natchitoches	2.7	2.8	2.8	IC	NG	DFO	0-1962
Natchitoches	Natchitoches	1.5	1.5	1.5	IC	NG	DFO	88-1942
Natchitoches	Natchitoches	26	26	26	ST	NG	DFO	88-1972
Natchitoches	Natchitoches	1.5	1.5	1.5	IC	NG	DFO	0-1942
Natchitoches	Natchitoches	12.6	12.6	12.6	ST	NG	DFO	88-1966
Natchitoches	Natchitoches	6	6	6	ST	NG	DFO	88-1962
		53	53.2	53.2				

Source:

EIA Electricity Historical Spreadsheets

Technology Assessment Division, Department of Natural Resources

EXHIBIT IV
 Publicly Owned Electric Utilities in Louisiana with Generation Facilities (2002)
 Louisiana Energy and Power Authority

City of Rayne

<u>Parish</u>	<u>Plant Name</u>	<u>Generation Capacity MW</u>			<u>Energy Source(s)</u>			<u>Initial Date of Operation</u> <u>Month, Year</u>
		<u>Nameplate</u>	<u>Summer</u>	<u>Winter</u>	<u>Prime Mover</u>	<u>Source 1</u>	<u>Source 2</u>	
Acadia	Rayne	4.1	2.5	2.5	IC	NG	DFO	88-1969
Acadia	Rayne	4.1	2.5	2.5	IC	NG	DFO	88-1969
		8.2	5	5				

EXHIBIT IV
Publicly Owned Electric Utilities in Louisiana with Generation Facilities (2002)
Louisiana Energy and Power Authority

City of Ruston

<u>Parish</u>	<u>Plant Name</u>	<u>Generation Capacity MW</u>			<u>Energy Source(s)</u>			<u>Initial Date of Operation</u> <u>Month, Year</u>
		<u>Nameplate</u>	<u>Summer</u>	<u>Winter</u>	<u>Prime Mover</u>	<u>Source 1</u>	<u>Source 2</u>	
Lincoln	Ruston	12.6	12	12	ST	NG	DFO	Dec-63
Lincoln	Ruston	26.8	25	25	ST	NG	DFO	Oct-68
Lincoln	Ruston	41.5	40	40	ST	NG	DFO	Jun-74
		80.9	77	77				

EXHIBIT IV
 Publicly Owned Electric Utilities in Louisiana with Generation Facilities (2002)
 Louisiana Energy and Power Authority

Louisiana Energy and Power Authority (LEPA) serving Publicly Owned Utilities

<u>Parish</u>	<u>Plant Name</u>	<u>Generation Capacity MW</u>			<u>Prime Mover</u>	<u>Energy Source(s)</u>			<u>Initial Date of Operation</u> <u>Month, Year</u>
		<u>Nameplate</u>	<u>Summer</u>	<u>Winter</u>		<u>Source 1</u>	<u>Source 2</u>	<u>Source 3</u>	
Pointe Coupee	New Roads	2.3	2.1	2.3	IC	DFO	NG	88-1965	
Pointe Coupee	New Roads	2	1.8	2	IC	DFO	NG	88-1971	
Pointe Coupee	New Roads	1.7	1.6	1.7	IC	DFO	NG	88-1951	
Pointe Coupee	New Roads	1.7	1.6	1.7	IC	DFO	NG	88-1957	
Pointe Coupee	New Roads	1.1	1	1.1	IC	DFO	NG	88-1957	
Pointe Coupee	New Roads	0.6	0.6	0.6	IC	DFO	NG	88-1953	
		9.4	8.7	9.4					

Source:

EIA Electricity Historical Spreadsheets

Technology Assessment Division, Department of Natural Resources

EXHIBIT IV
Publicly Owned Electric Utilities in Louisiana with Generation Facilities (2002)
Louisiana Energy and Power Authority

Terrebonne Parish Consolidated Government

<u>Parish</u>	<u>Plant Name</u>	<u>Generation Capacity MW</u>			<u>Prime Mover</u>	<u>Energy Source(s)</u>			<u>Initial Date of Operation</u> <u>Month, Year</u>
		<u>Nameplate</u>	<u>Summer</u>	<u>Winter</u>		<u>Source 1</u>	<u>Source 2</u>	<u>Source 3</u>	
Terrebonne	Houma	4.5	3.7	3.7	IC	NG	DFO	Aug-58	
Terrebonne	Houma	12.6	10	10	ST	NG		Aug-67	
Terrebonne	Houma	4.5	3.3	3.3	IC	NG	DFO	Aug-58	
Terrebonne	Houma	25.5	23.5	23.5	ST	NG		Aug-72	
Terrebonne	Houma	1.4	1	1	IC	NG	DFO	Aug-48	
Terrebonne	Houma	1.4	1	1	IC	NG	DFO	Aug-48	
Terrebonne	Houma	4.5	3.7	3.7	IC	NG	DFO	0-1958	
Terrebonne	Houma	2.7	2.5	2.5	IC	NG	DFO	0-1953	
Terrebonne	Houma	1.4	1	1	IC	NG	DFO	Aug-48	
Terrebonne	Houma	40.8	38.6	38.6	ST	NG		Jan-77	
			88.3						

Source:

EIA Electricity Historical Spreadsheets

Technology Assessment Division, Department of Natural Resources

EXHIBIT VI
Cogeneration Facilities in Louisiana(2002), Capacity and Energy Source

Named Cogeneration Facilities in Louisiana, 2002; from Energy Information Administration (EIA) Form 906

Company	Parish	Plant	Generator Capacity Summer, MW	Generator Nameplate Age Profile, Categories of Years						Generation 2002 (000kwh)	EIA Type Generation
				0-10	20-Nov	21-30	31-40	41-50	>50		
Agrilectric Power Partners Ltd	Calcasieu	Agrilectric Power Partners Ltd	10.9		10.9						2
Agrilectric Power Partners Ltd	Calcasieu	Agrilectric Power Partners Ltd	1.3	1.3							
Air Products & Chemicals Inc	Orleans	New Orleans	19		19						
Air Products & Chemicals Inc	Orleans	New Orleans	7.8	7.8							
American Sugar Refining Inc.	St Bernard	Domino Sugar Arabi Plant	5						5		
American Sugar Refining Inc.	St Bernard	Domino Sugar Arabi Plant	4						4		
BASF Corporation	Ascension	Geismar	33.7		33.7						
BASF Corporation	Ascension	Geismar	39.2	39.2							
Big Cajun 1 Peakers	Pointe Coupee	Big Cajun 1 Peakers	119	119							2
Big Cajun 1 Peakers	Pointe Coupee	Big Cajun 1 Peakers	119	119							
Boise Cascade Corp	Beauregard	DeRidder Mill	61.5				61.5				
Borden Chemicals & Plastics	Ascension	Borden Chemicals Plastics Cogen	20.1		20.1						
Borden Chemicals & Plastics	Ascension	Borden Chemicals Plastics Cogen	29.9		29.9						
Borden Chemicals & Plastics	Ascension	Borden Chemicals Plastics Cogen	29.7		29.7						
BP America Production Co	Cameron	Grand Chenier Gas Processing Plant	0.4				0.4				
BP America Production Co	Cameron	Grand Chenier Gas Processing Plant	0.5				0.5				
BP America Production Co	Cameron	Grand Chenier Gas Processing Plant	0.5				0.5				
BP America Production Co	Cameron	Grand Chenier Gas Processing Plant	0.4				0.4				
Calasieu Power LLC	Calcasieu	Calcasieu Power LLC	155	155					34,577		2
Calasieu Power LLC	Calcasieu	Calcasieu Power LLC	165	165							
Calpine	Acadia	Acadia Energy Center	159	159					350,015		2
Calpine	Acadia	Acadia Energy Center	159	159					988,626		
Calpine	Acadia	Acadia Energy Center	159	159					87,479		
Calpine	Acadia	Acadia Energy Center	159	159							
Calpine	Acadia	Acadia Energy Center	223	223							
Calpine	Acadia	Acadia Energy Center	223	223							
Chevron Oronite Co LLC	Plaquemines	Oak Point Cogen	4	4							
Chevron Oronite Co LLC	Plaquemines	Oak Point Cogen	4	4							
Chevron Oronite Co LLC	Plaquemines	Oak Point Cogen	4	4							
Chevron Oronite Co LLC	Plaquemines	Oak Point Cogen	4	4							
Chevron Oronite Co LLC	Plaquemines	Oak Point Cogen	4	4							
CII Carbon LLC	St Bernard	CII Carbon LLC	23						23	7,815	2
CII Carbon LLC	St Bernard	CII Carbon LLC	23						23	84,785	

Source:

EIA Electricity Historical Spreadsheets Technology Assessment Division, Department of Natural Resources

EXHIBIT VI
Cogeneration Facilities in Louisiana(2002), Capacity and Energy Source

Named Cogeneration Facilities in Louisiana, 2002; from Energy Information Administration (EIA) Form 906

Company	Parish	Plant	Generator Capacity Summer, MW	Generator Nameplate Age Profile, Categories of Years						Generation 2002 (000kwh)	EIA Type Generation
				0-10	20-Nov	21-30	31-40	41-50	>50		
CITGO Petroleum Corp	Calcasieu	CITGO Refinery Powerhouse	11.1						11.1		7
CITGO Petroleum Corp	Calcasieu	CITGO Refinery Powerhouse	7.3						7.3		
CITGO Petroleum Corp	Calcasieu	CITGO Refinery Powerhouse	18.7					18.7			
ConocoPhillips Alliance Refinery	Plaquemines	Alliance Refinery	6					6			7
ConocoPhillips Alliance Refinery	Plaquemines	Alliance Refinery	19	19							
Dow Chemical Co	Iberville	Dow Power and Utilities	55					55		142165	
Dow Chemical Co	Iberville	Dow Power and Utilities	86					86		18542	7
Dow Chemical Co	Iberville	Dow Power and Utilities	88				88			151	
Dow Chemical Co	Iberville	Dow Power and Utilities	57				57			209951	
Dow Chemical Co	Iberville	Dow Power and Utilities	55			55				2471	
Dow Chemical Co	Iberville	Dow Power and Utilities	55			55				315	
Dow Chemical Co	Iberville	Dow Power and Utilities	96			96					
Dow Chemical Co	Iberville	Dow Power and Utilities	96			96					
Dow Chemical Co	Iberville	Plaquemine Operations	49				49				
Dow Chemical Co	Iberville	Plaquemine Operations	49				49				
Dow Chemical Co - St Charles	St Charles	Dow St Charles Operations	100	100						64562	7
Dow Chemical Co - St Charles	St Charles	Dow St Charles Operations	100	100						429649	
Dow Chemical Co - St Charles	St Charles	Dow St Charles Operations	50	50							
Dow Chemical Co - St Charles	St Charles	Dow St Charles Operations	10		10						
Dow Chemical Co - St Charles	St Charles	Dow St Charles Operations	9.6			9.6					
Dow Chemical Co - St Charles	St Charles	Dow St Charles Operations	22	22							
DSM Copolymer	East Baton Rouge	Baton Rouge Plant	2					2			7
DSM Copolymer	East Baton Rouge	Baton Rouge Plant	2					2			
Dynegy Midstream Services	Cameron	Stingray Facility	2.5			2.5					2
Enterprise Products Optg LP	St Bernard	Toca Plant	0.8					0.8			7
Enterprise Products Optg LP	St Bernard	Toca Plant	0.8					0.8			
Enterprise Products Optg LP	St Bernard	Toca Plant	0.7	0.7							
Enterprise Products Optg LP	St Bernard	Toca Plant	0.5	0.5							
Exxon Mobil	East Baton Rouge	ExxonMobil Baton Rouge Cogen	88.6	88.6							7
Exxon Mobil	East Baton Rouge	ExxonMobil Baton Rouge Cogen	154.4	154.4							
Exxon Mobil	East Baton Rouge	ExxonMobil Baton Rouge Cogen	44.5					44.5			
Exxon Mobil	East Baton Rouge	ExxonMobil Baton Rouge Cogen	44.5					44.5			
Exxon Mobil	East Baton Rouge	ExxonMobil Baton Rouge Turbine Generatc	76.7		76.7						

Source:

EIA Electricity Historical Spreadsheets Technology Assessment Division, Department of Natural Resources

EXHIBIT VI
Cogeneration Facilities in Louisiana(2002), Capacity and Energy Source

Named Cogeneration Facilities in Louisiana, 2002; from Energy Information Administration (EIA) Form 906

Company	Parish	Plant	Generator Capacity Summer, MW	Generator Nameplate Age Profile, Categories of Years						Generation 2002 (000kwh)	EIA Type Generation
				0-10	20-Nov	21-30	31-40	41-50	>50		
Exxon Mobil Production Co	Iberia	ExxonMobil Blue Water Gas Plant	0.6			0.6					
Exxon Mobil Production Co	Iberia	ExxonMobil Blue Water Gas Plant	0.6			0.6					
Exxon Mobil Production Co	Iberia	ExxonMobil Blue Water Gas Plant	0.6			0.6					
Exxon Mobil Production Co	Iberia	ExxonMobil Blue Water Gas Plant	0.6			0.6					
Exxon Mobil Production Co	Iberia	ExxonMobil Blue Water Gas Plant	0.6			0.6					
Exxon Mobil Production Co	St Mary	ExxonMobil Garden City Gas Plant	0.56	0.56							
Exxon Mobil Production Co	St Mary	ExxonMobil Garden City Gas Plant	0.56				0.56				
Exxon Mobil Production Co	St Mary	ExxonMobil Garden City Gas Plant	0.56				0.56				
Exxon Mobil Production Co	St Mary	ExxonMobil Garden City Gas Plant	0.68			0.68					
Exxon Mobil Production Co	St Mary	ExxonMobil Garden City Gas Plant	0.1			0.1					
Exxon Mobil Production Co	Jefferson	ExxonMobil Grand Isle Gas	2.93			2.93					
Exxon Mobil Production Co	Jefferson	ExxonMobil Grand Isle Gas	2.93			2.93					
Exxon Mobil Production Co	Jefferson	ExxonMobil Grand Isle Gas	2.93			2.93					
First National Bank-Commerce	Concordia	Sidney A Murray Jr Hydroelectric	24		24					777,637	2
First National Bank-Commerce	Concordia	Sidney A Murray Jr Hydroelectric	24		24						
First National Bank-Commerce	Concordia	Sidney A Murray Jr Hydroelectric	24		24						
First National Bank-Commerce	Concordia	Sidney A Murray Jr Hydroelectric	24		24						
First National Bank-Commerce	Concordia	Sidney A Murray Jr Hydroelectric	24		24						
First National Bank-Commerce	Concordia	Sidney A Murray Jr Hydroelectric	24		24						
First National Bank-Commerce	Concordia	Sidney A Murray Jr Hydroelectric	24		24						
First National Bank-Commerce	Concordia	Sidney A Murray Jr Hydroelectric	24		24						
Formosa Plastics Corp	East Baton Rouge	Formosa Plastics	33		33						7
Formosa Plastics Corp	East Baton Rouge	Formosa Plastics	33		33						
Formosa Plastics Corp	East Baton Rouge	Formosa Plastics	33	33							
Formosa Plastics Corp	East Baton Rouge	Formosa Plastics	11		11						
Formosa Plastics Corp	East Baton Rouge	Formosa Plastics	11		11						
Gaylord Container Corp	Washington	Gaylord Container Bogalusa	34.41	34.41						147316	7
Gaylord Container Corp	Washington	Gaylord Container Bogalusa	23.25			23.25				188264	
Gaylord Container Corp	Washington	Gaylord Container Bogalusa	34.88			34.88				10336	
Georgia Gulf Corp Plaquemine	Iberville	Georgia Gulf Plaquemine	80	80						1766106	7
Georgia Gulf Corp Plaquemine	Iberville	Georgia Gulf Plaquemine	80	80						45316	
Georgia Gulf Corp Plaquemine	Iberville	Georgia Gulf Plaquemine	80	80						67441	
Georgia-Pacific Corp	East Baton Rouge	Georgia Pacific Port Hudson	62.96		62.96					283831	7

Source:

EIA Electricity Historical Spreadsheets Technology Assessment Division, Department of Natural Resources

EXHIBIT VI
Cogeneration Facilities in Louisiana(2002), Capacity and Energy Source

Named Cogeneration Facilities in Louisiana, 2002; from Energy Information Administration (EIA) Form 906

Company	Parish	Plant	Generator Capacity Summer, MW	Generator Nameplate Age Profile, Categories of Years						Generation 2002 (000kwh)	EIA Type Generation
				0-10	20-Nov	21-30	31-40	41-50	>50		
IMC Phosphates Co	St James	IMC Phosphates Company Uncle Sam	10.23		10.23					157762	7
IMC Phosphates Co	St James	IMC Phosphates Company Uncle Sam	10.23		10.23						
Imperial Sugar Co	St James	Colonial Sugar Refinery	0.6						0.6		7
Imperial Sugar Co	St James	Colonial Sugar Refinery	1.7			1.7					
Imperial Sugar Co	St James	Colonial Sugar Refinery	1.5					1.5			
Imperial Sugar Co	St James	Colonial Sugar Refinery	2.1				2.1				
International Paper Co	Morehouse	International Paper Louisiana Mill	21.8					21.8		12544	7
International Paper Co	Morehouse	International Paper Louisiana Mill	37.5				37.5			24295	
IPC-Mansfield Mill	De Soto	Mansfield Mill	19.94			19.94				60652	7
IPC-Mansfield Mill	De Soto	Mansfield Mill	31.33			31.33				203579	
IPC-Mansfield Mill	De Soto	Mansfield Mill	25.17			25.17				22645	
IPC-Mansfield Mill	De Soto	Mansfield Mill	21.37	21.37						161538	
IPC-Pine	Rapides	Pineville Mill	22				22			143093	7
Jeanerette Sugar Co Inc	Iberia	Jeanerette Sugar	2.33			2.33					7
Kaiser Aluminum&Chemical Cor	St James	Kaiser Aluminum	15				15			151749	7
Kaiser Aluminum&Chemical Cor	St James	Kaiser Aluminum	15				15			112906	
Kaiser Aluminum&Chemical Cor	St James	Kaiser Aluminum	15				15				
Kaiser Aluminum&Chemical Cor	St James	Kaiser Aluminum	21			21					
Kaiser Aluminum&Chemical Cor	St James	Kaiser Aluminum	17					17			
Kaiser Aluminum&Chemical Cor	St James	Kaiser Aluminum	17					17			
Kaiser Aluminum&Chemical Cor	St James	Kaiser Aluminum	6				6				
Louisiana Generating LLC	Pointe Coupee	Big Cajun 1	119				119			0	2
Louisiana Generating LLC	Pointe Coupee	Big Cajun 1	119				119			4,274	
Louisiana Generating LLC	Pointe Coupee	Big Cajun 2	580			580				20,083	
Louisiana Generating LLC	Pointe Coupee	Big Cajun 2	575			575				11,818,851	
Louisiana Generating LLC	Pointe Coupee	Big Cajun 2	575			575					
Louisiana Generating LLC	Ouachita	NRG Sterlington Power LLC	25	25						0	
Louisiana Generating LLC	Ouachita	NRG Sterlington Power LLC	22	22						223	
Louisiana Generating LLC	Ouachita	NRG Sterlington Power LLC	22	22							
Louisiana Generating LLC	Ouachita	NRG Sterlington Power LLC	22	22							
Louisiana Generating LLC	Ouachita	NRG Sterlington Power LLC	19	19							
Louisiana Generating LLC	Ouachita	NRG Sterlington Power LLC	18	18							
Louisiana Generating LLC	Ouachita	NRG Sterlington Power LLC	18	18							

Source:

EIA Electricity Historical Spreadsheets Technology Assessment Division, Department of Natural Resources

EXHIBIT VI
Cogeneration Facilities in Louisiana(2002), Capacity and Energy Source

Named Cogeneration Facilities in Louisiana, 2002; from Energy Information Administration (EIA) Form 906

Company	Parish	Plant	Generator Capacity Summer, MW	Generator Nameplate Age Profile, Categories of Years						Generation 2002 (000kwh)	EIA Type Generation
				0-10	20-Nov	21-30	31-40	41-50	>50		
Louisiana Generating LLC	Ouachita	NRG Sterlington Power LLC	17	17							
Louisiana Generating LLC	Ouachita	NRG Sterlington Power LLC	15	15							
Louisiana Tech University	Lincoln	Louisiana Tech University Power Plant	4.6			4.6				7	
Lyondell Chemical Co	Calcasieu	Lyondell Chemical Lake Charles	4			4				7	
M A Patout & Sons Ltd	Iberia	M A Patout Son Ltd	0.93			0.93				7	
M A Patout & Sons Ltd	Iberia	M A Patout Son Ltd	1.86			1.86					
Mobil Oil Corp-Chalmette	St Bernard	Chalmette Refinery LLC	1.2		1.2					7	
Nelson Industrial Steam Co	Calcasieu	Nelson Industrial Steam	107					107	5720	3	
Nelson Industrial Steam Co	Calcasieu	Nelson Industrial Steam	106					106	16675599		
NRG South Central Op Inc	Jefferson Davis	Bayou Cove Peaking Power	75	75						2	
NRG South Central Op Inc	Jefferson Davis	Bayou Cove Peaking Power	75	75							
NRG South Central Op Inc	Jefferson Davis	Bayou Cove Peaking Power	75	75							
NRG South Central Op Inc	Jefferson Davis	Bayou Cove Peaking Power	75	75							
Occidental Chemical Corporation	St Charles	Taft Cogeneration Facility	155	155					12085	7	
Occidental Chemical Corporation	St Charles	Taft Cogeneration Facility	155	155					25359		
Occidental Chemical Corporation	St Charles	Taft Cogeneration Facility	155	155					4457815		
Occidental Chemical Corporation	St Charles	Taft Cogeneration Facility	325	325							
PCS Nitrogen LP	Iberville	PCS Nitrogen Fertilizer LP	19		19					7	
Perryville Energy Partners	Ouachita	Perryville Power Station	169	169					41,946	4	
Perryville Energy Partners	Ouachita	Perryville Power Station	169	169					491,628		
Perryville Energy Partners	Ouachita	Perryville Power Station	224	224							
Perryville Energy Partners	Ouachita	Perryville Power Station	156	156							
Placid Refinery Co LLC	West Baton Rouge	Port Allen	3.2		3.2					7	
Placid Refinery Co LLC	West Baton Rouge	Port Allen	3.4		3.4						
Plaquemine City of	Iberville	Plaquemine	18.8				18.8			2	
Plaquemine City of	Iberville	Plaquemine	22.5			22.5					
PPG Industries Inc	Calcasieu	PPG Plant C Caustic	2.7		2.7					7	
PPG Industries Inc	Calcasieu	PPG Powerhouse A	7.5					7.5	14492		
PPG Industries Inc	Calcasieu	PPG Powerhouse A	7.5					7.5			
PPG Industries Inc	Calcasieu	PPG Powerhouse A	7.5					7.5			
PPG Industries Inc	Calcasieu	PPG Powerhouse A	10					10			
PPG Industries Inc	Calcasieu	PPG Powerhouse A	20				20				
PPG Industries Inc	Calcasieu	PPG Powerhouse C	55			55			1978467		

Source:

EIA Electricity Historical Spreadsheets Technology Assessment Division, Department of Natural Resources

EXHIBIT VI
Cogeneration Facilities in Louisiana(2002), Capacity and Energy Source

Named Cogeneration Facilities in Louisiana, 2002; from Energy Information Administration (EIA) Form 906

Company	Parish	Plant	Generator Capacity Summer, MW	Generator Nameplate Age Profile, Categories of Years						Generation 2002 (000kwh)	EIA Type Generation
				0-10	20-Nov	21-30	31-40	41-50	>50		
PPG Industries Inc	Calcasieu	PPG Powerhouse C	55			55					
PPG Industries Inc	Calcasieu	PPG Powerhouse C	52			52					
PPG Industries Inc	Calcasieu	PPG Powerhouse C	70.6		70.6						
PPG Industries Inc	Calcasieu	PPG Powerhouse C	70.6		70.6						
PPG Industries Inc	Calcasieu	PPG Riverside	35						35	83348	
PPG Industries Inc	Calcasieu	PPG Riverside	42						42		
PPG Industries Inc	Calcasieu	PPG Riverside	77				77				
Quachita Operating Sevices LLC	Ouachita	Ouachita Generating Plant	161	161						416010	2
Quachita Operating Sevices LLC	Ouachita	Ouachita Generating Plant	161	161						741598	
Quachita Operating Sevices LLC	Ouachita	Ouachita Generating Plant	161	161							
Quachita Operating Sevices LLC	Ouachita	Ouachita Generating Plant	111	111							
Quachita Operating Sevices LLC	Ouachita	Ouachita Generating Plant	111	111							
Quachita Operating Sevices LLC	Ouachita	Ouachita Generating Plant	111	111							
Reliant Energy Field Services	Bossier	Energy Field Services	0.2						0.2		2
Reliant Energy Field Services	Bossier	Energy Field Services	1.3						1.3		
Reliant Energy Field Services	Bossier	Energy Field Services	0.9						0.9		
Reliant Energy Field Services	Bossier	Energy Field Services	0.2						0.2		
Riverwood International Corp	Ouachita	Plant 31 Paper Mill	6						6	117759	7
Riverwood International Corp	Ouachita	Plant 31 Paper Mill	6						6	63524	
Riverwood International Corp	Ouachita	Plant 31 Paper Mill	6						6	85762	
Riverwood International Corp	Ouachita	Plant 31 Paper Mill	28				28				
Riverwood International Corp	Ouachita	Plant 31 Paper Mill	15			15					
RS Cogen	Calcasieu	RS Cogen	60.2	60.2						37,330	3
RS Cogen	Calcasieu	RS Cogen	167.7	167.7						1,908,918	
RS Cogen	Calcasieu	RS Cogen	167.7	167.7						68,989	
Stone Container Corp	Jackson	Stone Container Hodge	3						3	276212	7
Stone Container Corp	Jackson	Stone Container Hodge	5						5	172720	
Stone Container Corp	Jackson	Stone Container Hodge	15.6				15.6			39553	
Stone Container Corp	Jackson	Stone Container Hodge	27.5			27.5					
Stone Container Corp	Jackson	Stone Container Hodge	23.3			23.3					
Tembec USA, LLC	West Feliciana	St Francisville Mill	15			15				53071	7
Vulcan Materials Co	Ascension	Geismar Plant	40		40					322599	7
Vulcan Materials Co	Ascension	Geismar Plant	40		40						

Source:

EIA Electricity Historical Spreadsheets Technology Assessment Division, Department of Natural Resources

EXHIBIT VI
Cogeneration Facilities in Louisiana(2002), Age and Cogeneration Type

Parish	Plant Name	Generation Capacity MW			Prime Mover	Energy Source(s)			Initial Date of Operation	
		Nameplate	Summer	Winter		Source 1	Source 2	Source 3	Month	Year
Calcasieu	Agrilectric Power Partners Ltd	12.1	10.9	10.9	ST	AB	NG		7	1984
Calcasieu	Agrilectric Power Partners Ltd	1.5	1.3	1.3	ST	AB	NG		8	1995
Orleans	New Orleans	23.4	19	23.4	GT	NG			12	1984
Orleans	New Orleans	7.8	7.8	7.8	ST	NG			6	1995
St Bernard	Domino Sugar Arabi Plant	5	5	5	ST	NG			1	1949
St Bernard	Domino Sugar Arabi Plant	4	4	4	ST	NG			1	1949
Ascension	Geismar	35.7	33.7	37.7	GT	NG			7	1985
Ascension	Geismar	41.2	39.2	43.2	GT	NG	OG		11	1998
Pointe Coupee	Big Cajun 1 Peakers	128	119	125	GT	NG			6	2001
Pointe Coupee	Big Cajun 1 Peakers	128	119	125	GT	NG			7	2001
Beauregard	DeRidder Mill	61.5	61.5	61.5	ST	BLQ	WDS	NG	10	1969
Ascension	Borden Chemicals Plastics Cogen	26	20.1	23.2	GT	NG			4	1985
Ascension	Borden Chemicals Plastics Cogen	38.8	29.9	32.5	GT	NG			9	1986
Ascension	Borden Chemicals Plastics Cogen	38.8	29.7	33.9	GT	NG			11	1986
Cameron	Grand Chenier Gas Processing Plant	0.4	0.4	0.4	ST	NG			1	1966
Cameron	Grand Chenier Gas Processing Plant	0.5	0.5	0.5	ST	NG			1	1966
Cameron	Grand Chenier Gas Processing Plant	0.5	0.5	0.5	ST	NG			1	1966
Cameron	Grand Chenier Gas Processing Plant	0.4	0.4	0.4	ST	NG			1	1966
Calcasieu	Calcasieu Power LLC	155	155	160	GT	NG			5	2000
Calcasieu	Calcasieu Power LLC	165	165	170	GT	NG			4	2001
Acadia	Acadia Energy Center	185	159	174	CT	NG			7	2002
Acadia	Acadia Energy Center	185	159	174	CT	NG			7	2002
Acadia	Acadia Energy Center	185	159	174	CT	NG			8	2002
Acadia	Acadia Energy Center	185	159	174	CT	NG			8	2002
Acadia	Acadia Energy Center	240	223	226	CA	NG			7	2002
Acadia	Acadia Energy Center	240	223	226	CA	NG			8	2002
Plaquemines	Oak Point Cogen	4.7	4	5	GT	NG			10	1999
Plaquemines	Oak Point Cogen	4.7	4	5	GT	NG			10	1999
Plaquemines	Oak Point Cogen	4.7	4	5	GT	NG			10	1999
Plaquemines	Oak Point Cogen	4.7	4	5	GT	NG			10	1999
Plaquemines	Oak Point Cogen	4.7	4	5	GT	NG			10	1999
St Bernard	CII Carbon LLC	23	23	23	ST	PC			1	1951
St Bernard	CII Carbon LLC	23	23	23	ST	PC			1	1951
Calcasieu	CITGO Refinery Powerhouse	25	11.1	9.1	ST	OG	NG		1	1942
Calcasieu	CITGO Refinery Powerhouse	25	7.3	12.2	ST	OG	NG		1	1942

Source:

EIA Electricity Historical Spreadsheets

Technology Assessment Division, Department of Natural Resources

EXHIBIT VI
Cogeneration Facilities in Louisiana(2002), Age and Cogeneration Type

<u>Parish</u>	<u>Plant Name</u>	<u>Generation Capacity MW</u>			<u>Prime Mover</u>	<u>Energy Source(s)</u>			<u>Initial Date of Operation</u>	
		<u>Nameplate</u>	<u>Summer</u>	<u>Winter</u>		<u>Source 1</u>	<u>Source 2</u>	<u>Source 3</u>	<u>Month</u>	<u>Year</u>
Calcasieu	CITGO Refinery Powerhouse	25	18.7	14.5	ST	OG	NG		3	1969
Plaquemines	Alliance Refinery	6	6	6	OT	OG			12	1971
Plaquemines	Alliance Refinery	19	19	19	ST	OG			1	1990
Iberville	Dow Power and Utilities	57	55	55	CA	NG	OG	OTH	6	1958
Iberville	Dow Power and Utilities	88	86	86	CA	NG	OG	OTH	6	1962
Iberville	Dow Power and Utilities	90	88	88	CA	NG	OG	OTH	6	1966
Iberville	Dow Power and Utilities	57	57	57	CA	NG	OG	OTH	6	1969
Iberville	Dow Power and Utilities	70	55	60	CT	NG	OG	OTH	11	1978
Iberville	Dow Power and Utilities	70	55	60	CT	NG	OG	OTH	2	1979
Iberville	Dow Power and Utilities	125	96	104	CT	NG	OG		12	1982
Iberville	Dow Power and Utilities	125	96	104	CT	NG	OG		5	1983
Iberville	Plaquemine Operations	53	49	51	CS	NG			12	1969
Iberville	Plaquemine Operations	53	49	51	CS	NG			12	1969
St Charles	Dow St Charles Operations	116	100	116	CT	NG			12	1996
St Charles	Dow St Charles Operations	116	100	116	CT	NG			1	1997
St Charles	Dow St Charles Operations	50	50	50	CA	NG			12	2002
St Charles	Dow St Charles Operations	10	10	10	CA	NG			4	1987
St Charles	Dow St Charles Operations	9.6	9.6	9.6	CT	NG	OG		3	1980
St Charles	Dow St Charles Operations	22	22	22	CA	NG			2	1997
East Baton Rou	Baton Rouge Plant	3	2	2.5	ST	NG			1	1959
East Baton Rou	Baton Rouge Plant	3	2	2.5	ST	NG			1	1959
Cameron	Stingray Facility	2.5	2.5	0.8	GT	NG			9	1977
St Bernard	Toca Plant	0.8	0.8	0.8	IC	NG			6	1958
St Bernard	Toca Plant	0.8	0.8	0.8	IC	NG			6	1958
St Bernard	Toca Plant	0.7	0.7	0.7	IC	NG			2	1997
St Bernard	Toca Plant	0.5	0.5	0.5	IC	NG			8	2001
East Baton Rou	ExxonMobil Baton Rouge Cogen	90	88.6	92.6	CT	NG	OG		4	1999
East Baton Rou	ExxonMobil Baton Rouge Cogen	156.8	154.4	161.4	CT	NG	OG		1	1999
East Baton Rou	ExxonMobil Baton Rouge Cogen	45	44.5	46.5	CA	NG	OG		1	1952
East Baton Rou	ExxonMobil Baton Rouge Cogen	45	44.5	46.5	CA	NG	OG		1	1952
East Baton Rou	ExxonMobil Baton Rouge Turbine Generator	85.3	76.7	83.9	GT	NG			5	1990
Iberia	ExxonMobil Blue Water Gas Plant	0.6	0.6	0.6	IC	NG			11	1978
Iberia	ExxonMobil Blue Water Gas Plant	0.6	0.6	0.6	IC	NG			11	1978
Iberia	ExxonMobil Blue Water Gas Plant	0.6	0.6	0.6	IC	NG			11	1978
Iberia	ExxonMobil Blue Water Gas Plant	0.6	0.6	0.6	IC	NG			11	1978

Source:

EIA Electricity Historical Spreadsheets

Technology Assessment Division, Department of Natural Resources

EXHIBIT VI
Cogeneration Facilities in Louisiana(2002), Age and Cogeneration Type

<u>Parish</u>	<u>Plant Name</u>	<u>Generation Capacity MW</u>			<u>Prime Mover</u>	<u>Energy Source(s)</u>			<u>Initial Date of Operation</u>	
		<u>Nameplate</u>	<u>Summer</u>	<u>Winter</u>		<u>Source 1</u>	<u>Source 2</u>	<u>Source 3</u>	<u>Month</u>	<u>Year</u>
Iberia	ExxonMobil Blue Water Gas Plant	0.6	0.6	0.6	IC	NG			11	1978
St Mary	ExxonMobil Garden City Gas Plant	0.6	0.56	0.56	ST	NG			11	1997
St Mary	ExxonMobil Garden City Gas Plant	0.6	0.56	0.56	ST	NG			1	1964
St Mary	ExxonMobil Garden City Gas Plant	0.6	0.56	0.56	ST	NG			1	1964
St Mary	ExxonMobil Garden City Gas Plant	0.8	0.68	0.78	GT	NG			6	1968
St Mary	ExxonMobil Garden City Gas Plant	0.1	0.1	0.1	IC	NG			6	1968
Jefferson	ExxonMobil Grand Isle Gas	3	2.93	2.96	IC	NG			1	1965
Jefferson	ExxonMobil Grand Isle Gas	3	2.93	2.96	IC	NG			1	1965
Jefferson	ExxonMobil Grand Isle Gas	3	2.93	2.96	IC	NG			1	1965
Concordia	Sidney A Murray Jr Hydroelectric	24	24	24	HY	WAT			7	1990
Concordia	Sidney A Murray Jr Hydroelectric	24	24	24	HY	WAT			8	1990
Concordia	Sidney A Murray Jr Hydroelectric	24	24	24	HY	WAT			6	1990
Concordia	Sidney A Murray Jr Hydroelectric	24	24	24	HY	WAT			5	1990
Concordia	Sidney A Murray Jr Hydroelectric	24	24	24	HY	WAT			6	1990
Concordia	Sidney A Murray Jr Hydroelectric	24	24	24	HY	WAT			5	1990
Concordia	Sidney A Murray Jr Hydroelectric	24	24	24	HY	WAT			6	1990
Concordia	Sidney A Murray Jr Hydroelectric	24	24	24	HY	WAT			7	1990
East Baton Rou	Formosa Plastics	38.2	33	37	GT	NG			3	1985
East Baton Rou	Formosa Plastics	42.7	33	37	GT	NG			7	1990
East Baton Rou	Formosa Plastics	38.8	33	37	GT	NG			7	1996
East Baton Rou	Formosa Plastics	12	11	11	ST	NG			5	1985
East Baton Rou	Formosa Plastics	12	11	11	ST	NG			10	1990
Washington	Gaylord Container Bogalusa	37	34.41	34.78	ST	NG			4	1999
Washington	Gaylord Container Bogalusa	25	23.25	23.5	ST	NG			3	1981
Washington	Gaylord Container Bogalusa	37.5	34.88	35.25	ST	NG			6	1979
Iberville	Georgia Gulf Plaquemine	102	80	90	GT	NG	OTH		5	1997
Iberville	Georgia Gulf Plaquemine	102	80	90	GT	NG	OTH		5	1997
Iberville	Georgia Gulf Plaquemine	102	80	90	GT	NG	OTH		5	1997
East Baton Rou	Georgia Pacific Port Hudson	67.7	62.96	63.64	ST	NG	BLQ	WDS	6	1986
St James	IMC Phosphates Company Uncle Sam	11	10.23	10.34	ST	OTH			1	1968
St James	IMC Phosphates Company Uncle Sam	11	10.23	10.34	ST	OTH			1	1968
St James	Colonial Sugar Refinery	0.7	0.6	0.7	ST	NG			9	1930
St James	Colonial Sugar Refinery	2.5	1.7	1.7	ST	NG			3	1977
St James	Colonial Sugar Refinery	1.7	1.5	1.5	ST	NG			2	1957
St James	Colonial Sugar Refinery	2.5	2.1	2	ST	NG			9	1969

Source:

EIA Electricity Historical Spreadsheets

Technology Assessment Division, Department of Natural Resources

EXHIBIT VI
Cogeneration Facilities in Louisiana(2002), Age and Cogeneration Type

<u>Parish</u>	<u>Plant Name</u>	<u>Generation Capacity MW</u>			<u>Prime Mover</u>	<u>Energy Source(s)</u>			<u>Initial Date of Operation</u>	
		<u>Nameplate</u>	<u>Summer</u>	<u>Winter</u>		<u>Source 1</u>	<u>Source 2</u>	<u>Source 3</u>	<u>Month</u>	<u>Year</u>
Morehouse	International Paper Louisiana Mill	21.8	21.8	21.8	ST	NG	BLQ	WDS	12	1960
Morehouse	International Paper Louisiana Mill	37.5	37.5	37.5	ST	NG	BLQ	WDS	11	1967
De Soto	Mansfield Mill	40	19.94	23.18	ST	WDS			10	1981
De Soto	Mansfield Mill	40	31.33	31.29	ST	WDS	NG	TDF	12	1981
De Soto	Mansfield Mill	30	25.17	19.77	ST	WDS			12	1981
De Soto	Mansfield Mill	25	21.37	19.91	GT	NG			8	1995
Rapides	Pineville Mill	25	22	28	ST	NG			8	1968
Iberia	Jeanerette Sugar	2.5	2.33	2.35	ST	AB			10	1983
St James	Kaiser Aluminum	16	15	17	GT	NG			3	1969
St James	Kaiser Aluminum	16	15	17	GT	NG			4	1969
St James	Kaiser Aluminum	16	15	17	GT	NG			4	1969
St James	Kaiser Aluminum	24.7	21	24	GT	NG			4	1974
St James	Kaiser Aluminum	18.7	17	17	ST	NG			2	1958
St James	Kaiser Aluminum	18.7	17	17	ST	NG			2	1958
St James	Kaiser Aluminum	7.2	6	6	ST	NG			2	1969
Pointe Coupee	Big Cajun 1	113.6	119	125	ST	NG	DFO		6	1972
Pointe Coupee	Big Cajun 1	113.6	119	125	ST	NG	DFO		6	1972
Pointe Coupee	Big Cajun 2	638	580	575	ST	SUB	DFO		7	1981
Pointe Coupee	Big Cajun 2	632.5	575	575	ST	SUB	DFO		7	1982
Pointe Coupee	Big Cajun 2	632.5	575	575	ST	SUB	DFO		4	1983
Ouachita	NRG Sterlington Power LLC	25	25	27.5	GT	NG			6	2000
Ouachita	NRG Sterlington Power LLC	25	22	24.5	GT	NG			6	2000
Ouachita	NRG Sterlington Power LLC	25	22	24.9	GT	NG			3	2001
Ouachita	NRG Sterlington Power LLC	25	22	24.8	GT	NG			3	2001
Ouachita	NRG Sterlington Power LLC	25	19	21.5	GT	NG			6	2001
Ouachita	NRG Sterlington Power LLC	25	18	20	GT	NG			6	2001
Ouachita	NRG Sterlington Power LLC	25	18	21	GT	NG			3	2001
Ouachita	NRG Sterlington Power LLC	16	17	19.5	GT	NG			9	2000
Ouachita	NRG Sterlington Power LLC	25	15	16.5	GT	NG			4	2000
Lincoln	Louisiana Tech University Power Plant	5	4.6	4.8	ST	NG			4	1983
Calcasieu	Lyondell Chemical Lake Charles	4.3	4	4.04	ST	NG			1	1982
Iberia	M A Patout Son Ltd	1	0.93	1	ST	AB	NG	MSW	10	1981
Iberia	M A Patout Son Ltd	2	1.86	2	ST	AB	NG	MSW	10	1981
St Bernard	Chalmette Refinery LLC	5.7	1.2	1.5	OT	OTH			3	1990
Calcasieu	Nelson Industrial Steam	113.6	107	109	ST	PC	NG		2	1959

Source:

EIA Electricity Historical Spreadsheets

Technology Assessment Division, Department of Natural Resources

EXHIBIT VI
Cogeneration Facilities in Louisiana(2002), Age and Cogeneration Type

<u>Parish</u>	<u>Plant Name</u>	<u>Generation Capacity MW</u>			<u>Prime Mover</u>	<u>Energy Source(s)</u>			<u>Initial Date of Operation</u>	
		<u>Nameplate</u>	<u>Summer</u>	<u>Winter</u>		<u>Source 1</u>	<u>Source 2</u>	<u>Source 3</u>	<u>Month</u>	<u>Year</u>
Calcasieu	Nelson Industrial Steam	113.6	106	108	ST	PC	NG		5	1959
Jefferson Davis	Bayou Cove Peaking Power	80	75	85	GT	NG			9	2002
Jefferson Davis	Bayou Cove Peaking Power	80	75	85	GT	NG			7	2002
Jefferson Davis	Bayou Cove Peaking Power	80	75	80	GT	NG			7	2002
Jefferson Davis	Bayou Cove Peaking Power	80	75	85	GT	NG			10	2002
St Charles	Taft Cogeneration Facility	170	155	180	CT	NG	PL		7	2002
St Charles	Taft Cogeneration Facility	170	155	180	CT	NG			8	2002
St Charles	Taft Cogeneration Facility	170	155	180	CT	NG			9	2002
St Charles	Taft Cogeneration Facility	325	325	325	CA	NG	OG		10	2002
Iberville	PCS Nitrogen Fertilizer LP	26	19	23	GT	NG			11	1986
Ouachita	Perryville Power Station	210.5	169	180	CT	NG			6	2002
Ouachita	Perryville Power Station	210.5	169	180	CT	NG			7	2002
Ouachita	Perryville Power Station	237	224	235	CA	NG			7	2002
Ouachita	Perryville Power Station	172.9	156	162.5	CT	NG			6	2001
West Baton Rouge	Port Allen	3.8	3.2	3.4	GT	NG			5	1990
West Baton Rouge	Port Allen	3.8	3.4	3.6	GT	NG			5	1990
Iberville	Plaquemine	20	18.8	18.8	ST	NG			12	1971
Iberville	Plaquemine	24	22.5	22.5	ST	NG			0	1976
Calcasieu	PPG Plant C Caustic	3.4	2.7	2.7	ST	OTH			10	1986
Calcasieu	PPG Powerhouse A	7.5	7.5	7.5	ST	NG			6	1943
Calcasieu	PPG Powerhouse A	7.5	7.5	7.5	ST	NG			6	1943
Calcasieu	PPG Powerhouse A	7.5	7.5	7.5	ST	NG			5	1943
Calcasieu	PPG Powerhouse A	10	10	10	ST	NG			10	1950
Calcasieu	PPG Powerhouse A	20	20	20	ST	NG			8	1957
Calcasieu	PPG Powerhouse C	73.1	55	63	CT	NG			8	1977
Calcasieu	PPG Powerhouse C	73.1	55	63	CT	NG			6	1978
Calcasieu	PPG Powerhouse C	57.1	52	52	CA	NG			9	1977
Calcasieu	PPG Powerhouse C	77.2	70.6	78.6	CT	NG			8	1986
Calcasieu	PPG Powerhouse C	77.2	70.6	78.6	CT	NG			8	1986
Calcasieu	PPG Riverside	35	35	40	ST	NG			9	1947
Calcasieu	PPG Riverside	45	42	46	ST	NG			6	1950
Calcasieu	PPG Riverside	82	77	82	ST	NG			2	1969
Ouachita	Ouachita Generating Plant	179.3	161	161	CT	NG			8	2002
Ouachita	Ouachita Generating Plant	179.3	161	161	CT	NG			8	2002
Ouachita	Ouachita Generating Plant	179.3	161	161	CT	NG			8	2002

Source:

EIA Electricity Historical Spreadsheets

Technology Assessment Division, Department of Natural Resources

EXHIBIT VI
Cogeneration Facilities in Louisiana(2002), Age and Cogeneration Type

<u>Parish</u>	<u>Plant Name</u>	<u>Generation Capacity MW</u>			<u>Prime Mover</u>	<u>Energy Source(s)</u>			<u>Initial Date of Operation</u>	
		<u>Nameplate</u>	<u>Summer</u>	<u>Winter</u>		<u>Source 1</u>	<u>Source 2</u>	<u>Source 3</u>	<u>Month</u>	<u>Year</u>
Ouachita	Ouachita Generating Plant	122	111	111	CA	NG			8	2002
Ouachita	Ouachita Generating Plant	122	111	111	CA	NG			8	2002
Ouachita	Ouachita Generating Plant	122	111	111	CA	NG			8	2002
Bossier	Energy Field Services	0.2	0.2	0.7	IC	NG			1	1961
Bossier	Energy Field Services	0.4	1.3	0.9	IC	NG			1	1961
Bossier	Energy Field Services	0.4	0.9	0.3	IC	NG			1	1961
Bossier	Energy Field Services	0.2	0.2	0.2	IC	NG			1	1961
Ouachita	Plant 31 Paper Mill	6	6	6	ST	NG	WDS	BLQ	1	1928
Ouachita	Plant 31 Paper Mill	6	6	6	ST	NG	WDS	BLQ	1	1930
Ouachita	Plant 31 Paper Mill	6	6	6	ST	NG	WDS	BLQ	1	1948
Ouachita	Plant 31 Paper Mill	25	28	28	ST	NG	WDS	BLQ	1	1964
Ouachita	Plant 31 Paper Mill	20	15	15	ST	NG	WDS	BLQ	1	1977
Calcasieu	RS Cogen	70	60.2	65.8	CA	NG			12	2002
Calcasieu	RS Cogen	195	167.7	183.3	CT	NG			12	2002
Calcasieu	RS Cogen	195	167.7	183.3	CT	NG			12	2002
Jackson	Stone Container Hodge	3	3	3	ST	NG			1	1938
Jackson	Stone Container Hodge	5	5	5	ST	NG			12	1952
Jackson	Stone Container Hodge	15.6	15.6	15.6	ST	NG			8	1957
Jackson	Stone Container Hodge	27.5	27.5	27.5	ST	NG			8	1972
Jackson	Stone Container Hodge	23.3	23.3	23.3	ST	NG			10	1972
West Feliciana	St Francisville Mill	12.5	15	15	ST	BLQ			3	1966
Ascension	Geismar Plant	45	40	48	CT	NG			10	1985
Ascension	Geismar Plant	45	40	48	CT	NG			11	1985

EXHIBIT VII
Jointly Owned Electric Generating Plant in Louisiana (2002)

Jointly Owned Electric Generating Units, by Company, by Plant 2002

<u>Company, Plant</u>	<u>Unit ID</u>	<u>Net Summer Capability, MW</u>	<u>Unit Type</u>	<u>Primary Energy Source</u>	<u>Unit Status</u>	<u>Date</u>	<u>Owner Companies</u>	<u>Percent Owned</u>
CLECO Utility Group Inc								
Dolet Hills (DeSoto Parish)	1	650	ST	LIG	OP	1986	CLECO	50.0%
							Southwestern Electric Power Company (SWEPCO)	50.0%
Rodemacher (Rapides Parish)	2	523	ST	SUB	OP	1982	CLECO	30.0%
							Lafayette Public Power Authority	50.0%
							Louisiana Energy & Power Authority	20.0%
Entergy Gulf States Inc.								
Nelson Coal (Calcasieu Parish)	6	550	ST	SUB	OP	1982	Entergy Gulf States Inc	70.0%
							Sam Rayburn Municipal Power Agency	20.0%
							Sam Rayburn G & T Inc	10.0%
R S Nelson (Calcasieu parish)	1	98	ST	Nat Gas	OP	1959		
	2	98	ST	Nat Gas	OP	1956	Conoco Inc	36.1%
							Entergy Gulf States inc	1.0%
							Vista Energy Ltd Partnership	13.4%
							Citgo Petroleum Corp	49.5%
Riverbend (West Feliciana Parish)	1	936	NB	Uranium	OP	1986	Entergy Gulf States Inc	70.0%
							Entergy Power Inc	30.0%
City of Natchitoches								
Natchitoches (Natchitoches Parish)	10	26	ST	Nat Gas	OP	1972		
	2	1.5	IC	Nat Gas	OP	1942		
	3	1.5	IC	Nat Gas	OP	1942		
	6	2.8	IC	Nat Gas	OP	1962		
	7	2.8	IC	Nat Gas	OP	1962		
	8	6	ST	Nat Gas	OP	1962		
	9	12.6	ST	Nat Gas	OP	1966	City of Lafayette	100.0%

Source:

EIA Electricity Historical Spreadsheets

Technology Assessment Division, Department of Natural Resources

EXHIBIT VIII
Louisiana 2002 Net Generation by Type of Producer and Energy Source

YEAR	STATE	TYPE OF PRODUCER	ENERGY SOURCE	GENERATION (Megawatthours)
2002	LA	Total Electric Power Industry	Coal	22,050,906
2002	LA	Total Electric Power Industry	Petroleum	1,864,536
2002	LA	Total Electric Power Industry	Natural Gas	47,900,848
2002	LA	Total Electric Power Industry	Other Gases	1,497,624
2002	LA	Total Electric Power Industry	Nuclear	17,305,328
2002	LA	Total Electric Power Industry	Hydroelectric	891,441
2002	LA	Total Electric Power Industry	Other Renewables	2,862,791
2002	LA	Total Electric Power Industry	Other	597,490
2002	LA	Total Electric Power Industry	Total	94,970,964
2002	LA	Electric Generators, Electric Utilities	Coal	12,258,694
2002	LA	Electric Generators, Electric Utilities	Petroleum	68,460
2002	LA	Electric Generators, Electric Utilities	Natural Gas	25,085,994
2002	LA	Electric Generators, Electric Utilities	Other Gases	203,484
2002	LA	Electric Generators, Electric Utilities	Nuclear	17,305,328
2002	LA	Electric Generators, Electric Utilities	Hydroelectric	0
2002	LA	Electric Generators, Electric Utilities	Other Renewables	0
2002	LA	Electric Generators, Electric Utilities	Other	0
2002	LA	Electric Generators, Electric Utilities	Total	54,921,960
2002	LA	Electric Generators, Independent Power Producers	Coal	9,766,681
2002	LA	Electric Generators, Independent Power Producers	Petroleum	118,581
2002	LA	Electric Generators, Independent Power Producers	Natural Gas	6,105,344
2002	LA	Electric Generators, Independent Power Producers	Other Gases	0
2002	LA	Electric Generators, Independent Power Producers	Nuclear	0
2002	LA	Electric Generators, Independent Power Producers	Hydroelectric	891,441
2002	LA	Electric Generators, Independent Power Producers	Other Renewables	59,087
2002	LA	Electric Generators, Independent Power Producers	Other	0
2002	LA	Electric Generators, Independent Power Producers	Total	16,941,134
2002	LA	Combined Heat and Power, Electric Power	Coal	0
2002	LA	Combined Heat and Power, Electric Power	Petroleum	1,646,229
2002	LA	Combined Heat and Power, Electric Power	Natural Gas	3,683
2002	LA	Combined Heat and Power, Electric Power	Other Gases	0
2002	LA	Combined Heat and Power, Electric Power	Nuclear	0
2002	LA	Combined Heat and Power, Electric Power	Hydroelectric	0
2002	LA	Combined Heat and Power, Electric Power	Other Renewables	0

Source:

EIA Electricity Historical Spreadsheets Technology Assessment Division, Department of Natural Resources

EXHIBIT VIII
Louisiana 2002 Net Generation by Type of Producer and Energy Source

YEAR	STATE	TYPE OF PRODUCER	ENERGY SOURCE	GENERATION (Megawatthours)
2002	LA	Combined Heat and Power, Electric Power	Other	0
2002	LA	Combined Heat and Power, Electric Power	Total	1,649,912
2002	LA	Combined Heat and Power, Commercial Power	Coal	0
2002	LA	Combined Heat and Power, Commercial Power	Petroleum	0
2002	LA	Combined Heat and Power, Commercial Power	Natural Gas	32,000
2002	LA	Combined Heat and Power, Commercial Power	Other Gases	0
2002	LA	Combined Heat and Power, Commercial Power	Nuclear	0
2002	LA	Combined Heat and Power, Commercial Power	Hydroelectric	0
2002	LA	Combined Heat and Power, Commercial Power	Other Renewables	0
2002	LA	Combined Heat and Power, Commercial Power	Other	0
2002	LA	Combined Heat and Power, Commercial Power	Total	32,000
2002	LA	Combined Heat and Power, Industrial Power	Coal	25,531
2002	LA	Combined Heat and Power, Industrial Power	Petroleum	31,266
2002	LA	Combined Heat and Power, Industrial Power	Natural Gas	16,673,826
2002	LA	Combined Heat and Power, Industrial Power	Other Gases	1,294,140
2002	LA	Combined Heat and Power, Industrial Power	Nuclear	0
2002	LA	Combined Heat and Power, Industrial Power	Hydroelectric	0
2002	LA	Combined Heat and Power, Industrial Power	Other Renewables	2,803,704
2002	LA	Combined Heat and Power, Industrial Power	Other	597,490
2002	LA	Combined Heat and Power, Industrial Power	Total	21,425,957

Source:

EIA Electricity Historical Spreadsheets

Technology Assessment Division, Department of Natural Resources