

Louisiana Energy Facts

Department of Natural Resources

Technology Assessment Division

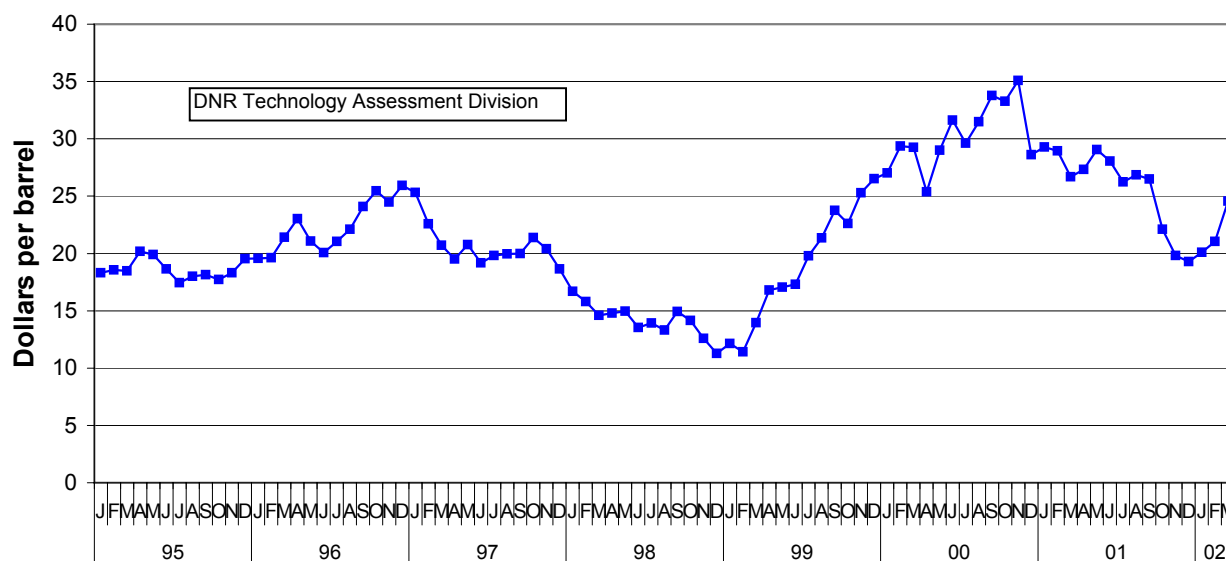
South Louisiana Sweet crude oil spot market prices at St. James are on the upswing again since last December. The reduction in production by OPEC producing countries since their last meeting, the economic recovery since September 11, and the expected summer vacation gasoline demand are the main reason for the rising prices. The expected oil price for the summer months will be between \$21 to \$26 per barrel.

South Louisiana Sweet Crude Average Spot Market Price at St. James (Dollars per barrel)

<u>Month</u>	<u>1997</u>	<u>1998</u>	<u>1999</u>	<u>2000</u>	<u>2001</u>	<u>2002</u>	<u>Change</u>	
							<u>00/01</u>	<u>or 01/02</u>
January	25.33	16.68	12.14	27.03	29.29	20.10		-31.38%
February	22.57	15.79	11.43	29.37	28.96	21.06		-27.28%
March	20.72	14.59	13.97	29.24	26.68	24.76		-7.20%
April	19.51	14.79	16.80	25.38	27.33		7.68%	
May	20.78	14.96	17.05	29.00	29.05		0.17%	
June	19.17	13.54	17.31	31.62	28.04		-11.32%	
July	19.83	13.92	19.80	29.61	26.25		-11.35%	
August	19.96	13.31	21.35	31.49	26.84		-14.77%	
September	20.00	14.94	23.75	33.78	26.48		-21.61%	
October	21.39	14.15	22.62	33.28	22.10		-33.59%	
November	20.41	12.60	25.29	35.09	19.82		-43.52%	
December	18.66	11.27	26.51	28.62	19.28		-32.63%	
Year Average	20.69	14.21	19.00	30.29	25.84	21.97	*	

* Partial Year


South Louisiana Sweet Crude Average Spot Market Price at St. James



	OCT 01	SEP 01	AUG 01	OCT 00
PRODUCTION				
<u>LOUISIANA FEDERAL OFFSHORE (OCS)</u>				
Crude Oil & Condensate ^C (MMB)	43	44	45	42 ²
Natural Gas & Casinghead ^C (BCF)	306	309	325	298 ²
<u>THE UNITED STATES TOTAL</u>				
Crude Oil & Condensate ^C (MMB)	180	175	180	180
Natural Gas & Casinghead ^C (BCF)	1,620	1,583	1,627	1,634 ²
IMPORTS				
U.S. Crude Oil ^C (MMB)	281	272 ²	282	279 ²
U.S. Natural Gas ^C (BCF)	331	316 ²	354 ²	325 ²
BAKER HUGHES RIG COUNTS				
U.S. Gas ^A	913	972	1,032	842
U.S. Oil ^A	198	220	219	212
U.S. Offshore ^A	132	143	147	148
U.S. Total ^A	1,111	1,193	1,252	1,055
PRICES				
<u>CRUDE OIL (\$/barrel)</u>				
OPEC Average ^C (F.O.B.)	15.78	18.80	21.20	26.71 ²
U.S. Imports Average ^C (F.O.B.)	17.04	20.93	22.00	27.74 ²
U.S. Wellhead Average ^C	18.37	22.37	23.08	29.65 ²
Gulf OCS Wellhead Average ^C	21.41	23.95	24.71	30.78 ²
State Severance Wellhead Average ^E	27.69	25.00	24.64	31.95
<u>NATURAL GAS (\$/MCF)</u>				
U.S. City Gates Average ^C	3.40	3.66	4.40	5.66 ²
U.S. Imports Average ^C (F.O.B.)	2.57	2.63	3.13	5.16 ²
U.S. Wellhead Average ^C	2.40	2.55	3.23	4.58 ²
State Royalty Wellhead Average	3.40	2.45	3.09	5.16 ²

¹ Estimated	² Revised
BCF: Billion Cubic Feet	BTU: British thermal unit
F.O.B.: Free on board	MCF: Thousand Cubic Feet
MMB: Million Barrels	MMBTU: Million BTU
OCS: Outer Continental Shelf	N/A: Not Available
DATA SOURCES	
A: Oil and Gas Journal	B: Wall Street Journal
C: U.S. Department of Energy	D: DYNEGY Inc.
E: Louisiana Department of Revenue and Taxation	
Note: Unless otherwise specified, data is from the Louisiana Department of Natural Resources and excludes Federal OCS.	

DEPARTMENT OF NATURAL RESOURCES	
Jack C. Caldwell, Secretary	
Technology Assessment Division	
T. Michael French, Director	
617 North 3rd Street Rm 1150	William J. Delmar, Jr., Asst. Dir.
Baton Rouge, LA 70802-5428	
Mail: P.O. Box 44156	
Baton Rouge, LA 70804-4156	
Phone: (225) 342-1399	
Fax: (225) 342-1397	
E-mail: techasmt@dnr.state.la.us	



The Louisiana Energy Facts is also available on DNR's home page. <http://www.dnr.state.la.us>

[Go to DNR's home page, click on the Newsletters button and select the Facts' issue.]

To change your mailing address, please just call, write, fax, or email us with the new address.

This issue of Louisiana Energy Facts is funded 100% (\$232.60) with Petroleum Violation Escrow funds as part of the State Energy Program as approved by the U.S. Department of Energy and the Department of Natural Resources

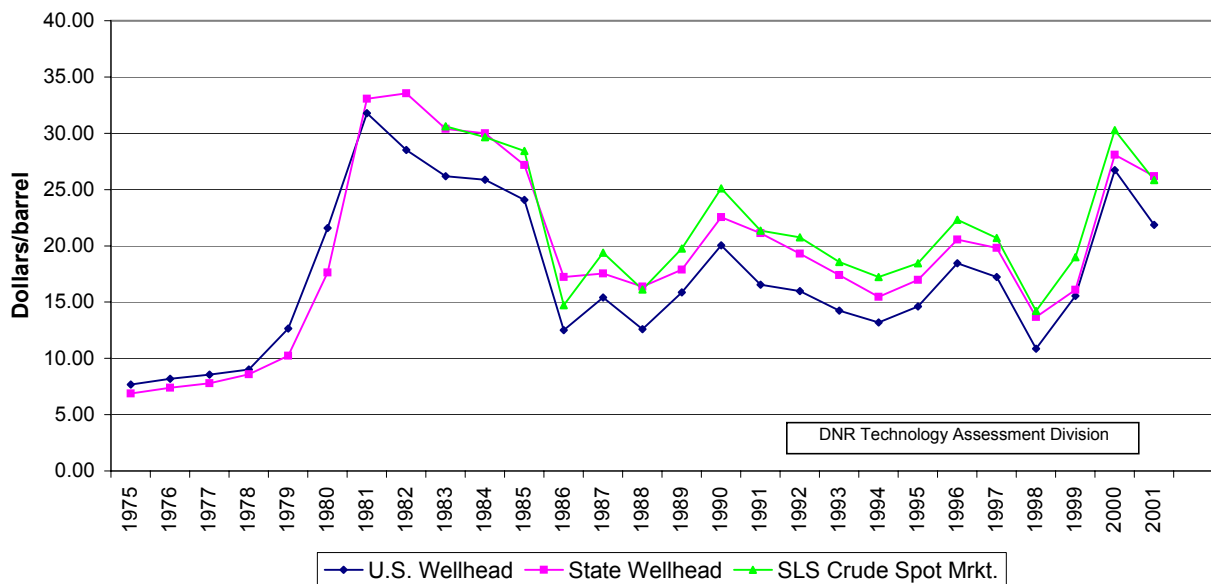
This public document was published at a total cost of \$232.60. 1,000 copies of this public document were published in this first printing at a total cost of \$232.60. The total cost of all printing of this document, including reprints, is \$232.60. This document was published by the Department of Natural Resources, P.O. Box 44156, Baton Rouge, LA 70804-4156 to promulgate the State Energy Program developed under authority of P.L. 94-163. This material was printed in accordance with the standards for printing by State agencies established pursuant to R.S. 43.31.

Average Crude Oil Prices

(Dollars/Barrel)

YEAR	UNITED STATES			LOUISIANA			
	Imports F.O.B. ^C	Refinery Domestic Acquisition ^C	U.S. Wellhead ^C	DOE Wellhead ^C	State Wellhead ^D	Federal OCS ^C	Spot Market
1976	12.15	8.84	8.19	7.51	7.39	8.14	N/A
1977	13.24	9.55	8.57	8.33	7.79	9.00	N/A
1978	13.29	10.61	9.00	9.03	8.59	9.86	N/A
1979	20.07	14.27	12.64	11.42	10.23	11.23	N/A
1980	32.37	24.23	21.59	19.87	17.64	18.87	N/A
1981	35.15	34.33	31.77	35.45	33.07	35.07	N/A
1982	32.02	31.32	28.52	32.44	33.55	32.61	N/A
1983	27.81	28.87	26.19	30.02	30.38	29.77	30.63
1984	27.60	28.53	25.88	29.67	29.98	29.36	29.64
1985	25.84	26.66	24.09	27.22	27.18	27.33	28.42
1986	12.52	14.82	12.51	15.32	17.23	15.27	14.72
1987	16.69	17.76	15.40	17.97	17.55	17.54	19.38
1988	13.25	14.74	12.58	15.22	16.38	14.71	16.13
1989	16.89	17.87	15.86	18.39	17.87	17.83	19.75
1990	20.37	22.59	20.03	23.04	22.54	22.40	25.11
1991	16.89	19.33	16.54	20.14	21.13	19.41	21.36
1992	16.77	18.63	15.99	19.00 ²	19.31	18.35 ²	20.75
1993	14.72	16.66	14.25	16.90 ²	17.39	16.15 ²	18.56
1994	14.13	15.67	13.19	15.60 ²	15.46	14.75 ²	17.22
1995	15.69	17.33	14.62	17.06	16.98	16.17 ²	18.46
1996	19.32	20.77	18.46	20.88 ²	20.56	20.03 ²	22.32
1997	16.94	19.61	17.24	19.22 ²	19.80	18.63 ²	20.69
1998	10.75 ²	13.18 ²	10.87 ²	12.59 ²	13.68 ²	12.03 ²	14.21
1999	16.47 ²	17.90 ²	15.56 ²	17.73 ²	16.09	16.66 ²	19.00 ²
2000	26.27 ²	29.11 ²	26.72 ²	29.03 ²	28.10 ²	27.59 ²	30.29
2001	20.54	24.34	21.86	24.51	26.17	23.29	25.84

Average Crude Oil Prices



SPOT MARKET PRICES	Mar. 02	Feb. 02	Mar. 01
Louisiana Natural Gas ^D (\$/MMBTU)	2.36	1.98	4.94
Louisiana Sweet Crude - St. James ^B (\$/Barrel)	24.76	21.06	26.68
BAKER HUGHES RIG COUNTS	Feb. 02	Jan. 02	Feb. 01
North Louisiana ^A	20	24	30
South Louisiana Inland Waters ^A	16	15	20
South Louisiana Inland ^A	31	32	43
Louisiana Offshore ^A (State + OCS)	96	98	127
Total Louisiana ^A (OCS included)	163	169	220
PRODUCTION (State Jurisdiction Only)	Feb. 02	Jan. 02	Feb. 01
Louisiana Crude Oil & Condensate (MMB)	8.5	8.5	8.3 ²
Louisiana Natural Gas & Casinghead (BCF)	122.6	123.1	121.2 ²
DRILLING PERMITS (State Jurisdiction Only)	Feb. 02	Jan. 02	Feb. 01
Total Louisiana Oil and Gas	70	45 ²	121
Louisiana Wildcats	8	3	4
Louisiana Offshore (Wildcats included)	6	3	9

Louisiana Department of Natural Resources



Technology Assessment Division
 P.O. Box 44156
 Baton Rouge, LA 70804-4156

ADDRESS SERVICE REQUESTED