

LOUISIANA ENERGY FACTS

Louisiana Department of Natural Resources
Technology Assessment Division

www.dnr.louisiana.gov/tad

INSIDE

Highlights
page 1

South Louisiana Sweet Crude Oil Average Spot Price at St. James
page 1

Current Oil & Gas Data
page 2

Louisiana Natural Gas Production from Incapable Oil and Gas Wells
page 3

Louisiana Crude Oil Production from Stripper Wells
page 3

Quick Facts
page 4



Department of Natural Resources
Scott A. Angelle, Secretary

Technology Assessment Division
T. Michael French, Director
Manuel Lam, Senior Analyst

617 North Third Street
Baton Rouge, LA 70802

Tel. (225) 342-1270
Fax. (225) 242-1397
Email: techasmt@la.gov
www.dnr.louisiana.gov/tad

Highlights SEPTEMBER 2009

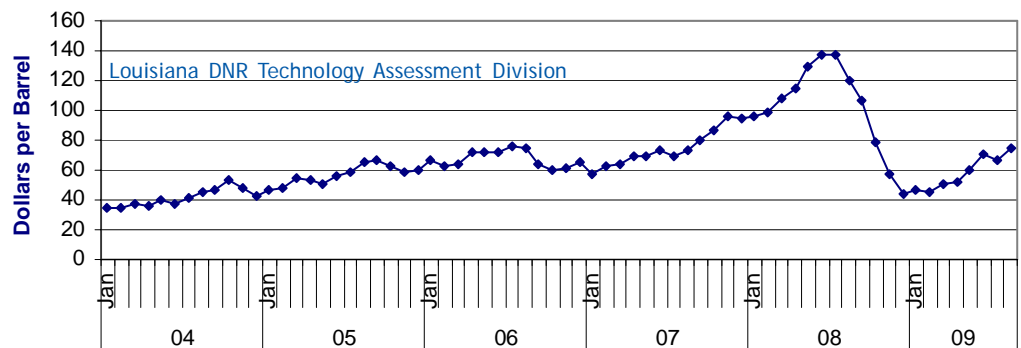
Natural gas spot prices are falling. The price dropped more than 62% in a year. In August 2008, the average spot gas price was \$8.52 per MMBTU, and a year later, in August 2009, the average spot gas price was only \$3.18 per MMBTU. On September 3, 2009, the Henry Hub cash spot price had fallen even further to \$2.06 per MMBTU. The decline can be attributed to the growing domestic gas supply from unconventional resources like tight sands, coalbed methane and shale formations; weak late summer demand; the lack of hurricane threats in the Gulf of Mexico; high gas in storage inventory; and the economic gloom.

South Louisiana Sweet Crude Oil Average Spot Price at St. James*

Month	(Dollars per Barrel)						% Change	
	2004	2005	2006	2007	2008	2009	07/08	08/09
January	35.09	46.60	66.01	56.72	96.12	47.17		-50.93%
February	34.46	47.67	62.22	62.56	98.45	45.63		-53.65%
March	36.94	54.49	64.33	64.62	107.45	50.08		-53.39%
April	36.22	53.48	71.43	69.19	115.13	52.32		-54.56%
May	40.03	50.42	72.51	69.09	128.74	60.29		-53.17%
June	37.81	56.64	71.84	73.20	137.91	71.15		-48.41%
July	40.95	58.98	76.27	69.14	137.80	66.79		-51.53%
August	45.03	65.66	75.05	73.33	119.41	74.31		-37.77%
September	46.34	67.19	63.91	79.86	107.07		34.07%	
October	53.67	62.77	59.52	86.25	78.78		-8.66%	
November	48.14	58.59	61.53	95.97	56.74		-40.88%	
December	42.97	59.78	64.67	95.32	43.93		-53.91%	
Year Average	41.47	56.86	67.44	74.60	102.29	58.47 **		

* All data are revised, see July 2001 statistics changes explanation.

** Partial Year



Current Oil & Gas Data

Louisiana DNR Technology Assessment Division

PRODUCTION	MAR 09	FEB 09	JAN 09	MAR 08
LOUISIANA FEDERAL OFFSHORE (OCS)				
Crude Oil & Condensate ^C (MMB)	24 ¹	28 ¹	35 ¹	37 ¹
Natural Gas & Casinghead ^C (BCF)	119 ¹	117 ¹	127 ¹	168 ¹
THE UNITED STATES TOTAL				
Crude Oil & Condensate ^C (MMB)	163	147	163	160 ²
Natural Gas & Casinghead ^C (BCF)	1,796	1,627	1,782	1,750
IMPORTS				
U.S. Crude Oil ^C (MMB)	292	258	305	299 ²
U.S. Natural Gas ^C (BCF)	324	322	360	366 ²
BAKER HUGHES RIG COUNTS				
U.S. Gas ^A	867	1,037	1,215	1,444
U.S. Oil ^A	225	271	328	343
U.S. Offshore ^A	46	57	66	60
U.S. Total ^A	1,105	1,320	1,553	1,797
PRICES				
CRUDE OIL (\$/barrel)				
OPEC Average ^C (F.O.B.)	45.75	39.71	37.60	100.22
U.S. Imports Average ^C (F.O.B.)	44.28	38.08	36.85	96.42 ²
U.S. Wellhead Average ^C	42.46	34.14	35.00	98.44
Gulf OCS Wellhead Average ^C	44.36	38.77	39.16	96.68
State Severance Wellhead Average ^E	39.06	39.23	58.12	92.34
NATURAL GAS (\$/MCF)				
U.S. City Gates Average ^C	6.86	7.25	7.95	9.49 ²
U.S. Imports Average ^C (F.O.B.)	4.35	5.21	6.18	9.03
U.S. Wellhead Average ^C	3.72	4.19	5.15	8.29
State Royalty Wellhead Average	4.26	4.82	5.90	9.90 ²
NYMEX Henry Hub End of the Month Settle Gas Price ^B (\$/MMBTU)	4.06	4.48	6.14	8.93 ²

Key

Data Sources

1	Estimated	MCF	Thousand Cubic Feet	A	Oil & Gas Journal	D	Natural Gas Week
2	Revised	MMB	Million Barrels	B	Wall Street Journal	E	LA Dept of Revenue
BCF	Billion Cubic Feet	NA	Not Available	C	U. S. Dept. of Energy		
BTU	British Thermal Unit	OCS	Outer Continental Shelf				
FO.B.	Free on Board	MMBTU	Million British Thermal Units	Note: Unless otherwise specified, data is from the Louisiana Department of Natural Resources and excludes Federal OCS.			

Note from the Editors

Louisiana Energy Facts is published monthly by the Louisiana Department of Natural Resources, Technology Assessment Division as a public service to individuals interested in Louisiana energy activities. Content includes recent oil, gas and other energy statistics and a brief analysis of current trends.

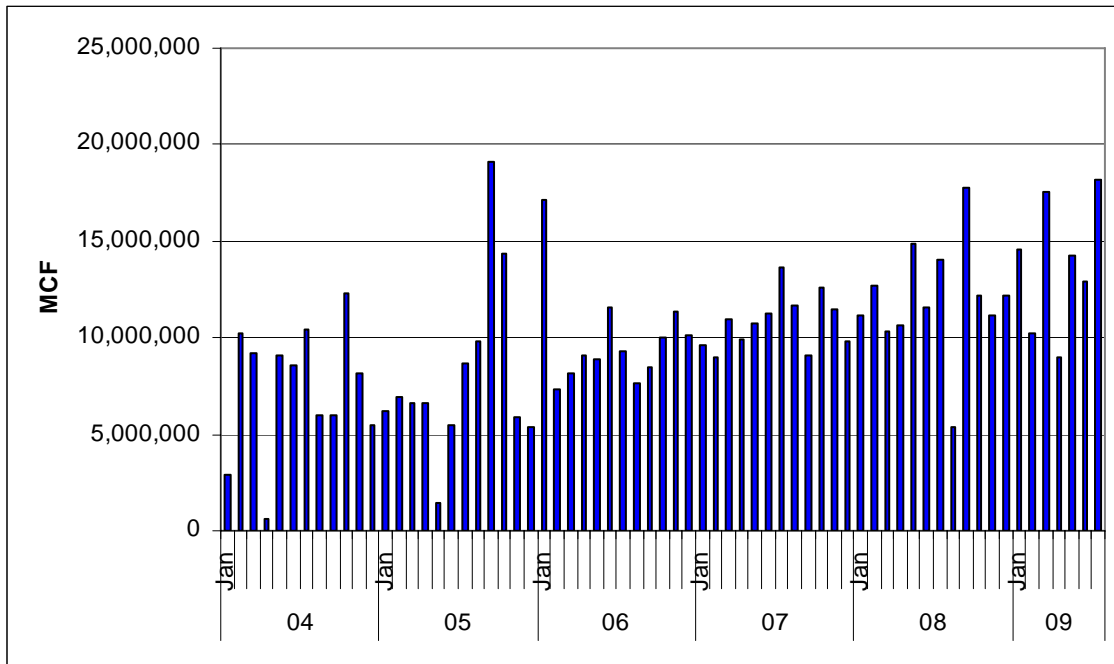
Louisiana Energy Facts articles provide insight and information on subjects of special interest to our readers, and may announce relevant, forthcoming publications.

These documents are available on the Louisiana Department of Natural Resources, Technology Assessment Division home page: <http://www.dnr.louisiana.gov/tad>. From the menu, select **Energy Data & Reports**; choose **Louisiana Energy Facts Newsletter**. Our current online holdings include issues dating from 1998 through the present. If the issue you are seeking is unavailable, please contact us.

To request a subscription or update your mailing address, contact us with your information. Please specify print or electronic subscription. **We value your feedback.** Please send your comments and suggestions for improving and enhancing the newsletter to: techasmt@la.gov.

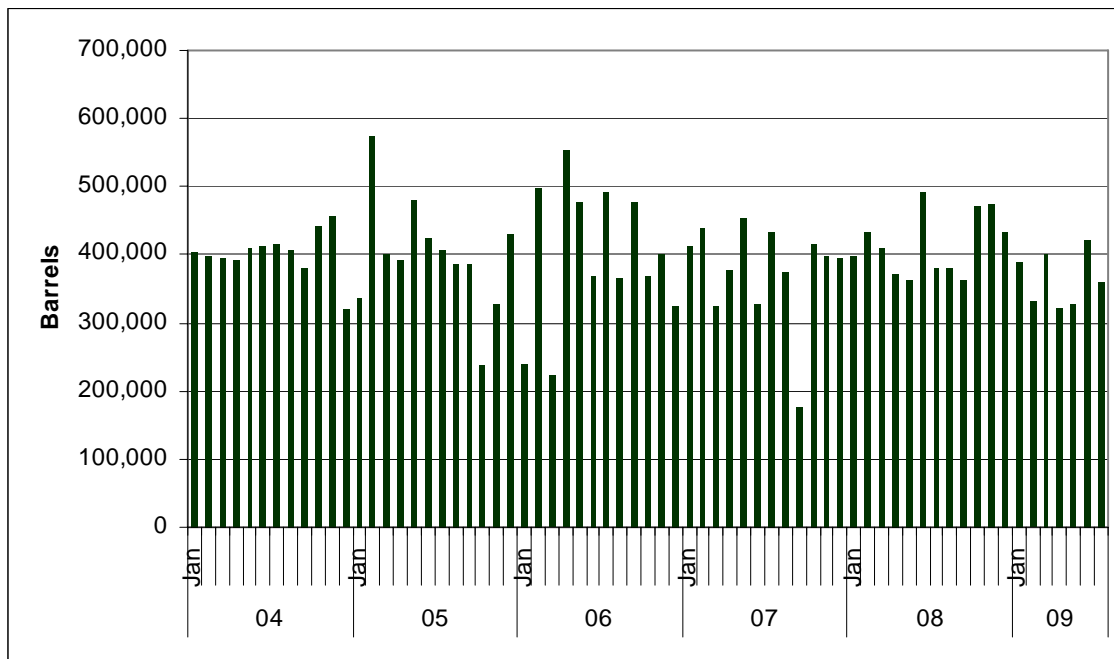
Louisiana Natural Gas Production from Incapable Oil and Gas Wells^E

Louisiana DNR Technology Assessment Division



Louisiana Crude Oil Production from Stripper Wells

Louisiana DNR Technology Assessment Division



This issue of **Louisiana Energy Facts** is funded 100% (\$1,066) with Petroleum Violation Escrow funds as part of the State Energy Program as approved by the U.S. Department of Energy and Department of Natural Resources. This public document was published at a total cost of \$1,066. 1,025 copies of this public document were published in this first printing at a total cost of \$1,066. The total cost of all printing of this document, including reprints, is \$1,066. This document was published by the Department of Natural Resources, P.O. Box 94396, Baton Rouge, LA 70804-9396 to promulgate the State Energy Program developed under authority of P.L. 94-163. This material was printed in accordance with the standards for printing by State agencies established pursuant to R.S. 43.31.



LOUISIANA DEPARTMENT OF NATURAL RESOURCES
 Technology Assessment Division
 P. O. Box 94396
 Baton Rouge, LA 70804-9396

PRST STD
 U.S. POSTAGE
PAID
 BATON ROUGE, LA
 PERMIT NO. 936

ADDRESS SERVICE REQUESTED

INSIDE

Highlights
page 1

South Louisiana Sweet Crude Oil Average Spot Price at St. James
page 1

Current Oil & Gas Data
page 2

Louisiana Natural Gas Production from Incapable Oil and Gas Wells
page 3

Louisiana Crude Oil Production from Stripper Wells
page 3

Quick Facts
page 4

Quick Facts

SEPTEMBER 2009

Louisiana DNR Technology Assessment Division

	Aug 09	Jul 09	Aug 08
SPOT MARKET PRICES			
Louisiana Natural Gas ^D (\$/MMBTU)	3.18	3.46	8.52
NYMEX Henry Hub Last Settle Gas Price ^B (\$/MMBTU)	3.38	3.95	9.22
Louisiana Sweet Crude - St. James ^B (\$/Barrel)	74.31	66.79	119.41
BAKER HUGHES RIG COUNTS			
	Jul 09	Jun 09	Jul 08
North Louisiana ^A	81	76	72
South Louisiana Inland Waters ^A	8	6	23
South Louisiana Inland ^A	11	11	29
Louisiana State Offshore	1	1	6
Louisiana Federal OCS Offshore	32	40	50
Total Louisiana ^A (OCS included)	133	134	180
PRODUCTION (State Jurisdiction Only)			
	Jul 09	Jun 09	Jul 08
Louisiana Crude Oil & Condensate (MMB)	5.7	5.5 ¹	6.6 ²
Louisiana Natural Gas & Casinghead (BCF)	117.4	114.2 ¹	121.8 ²
DRILLING PERMITS (State Jurisdiction Only)			
	Jul 09	Jun 09	Jul 08
Total Louisiana Oil and Gas	123	118	292
Louisiana Wildcats	1	0	9
Louisiana Offshore (Wildcats included)	2	1	1