

**TRACT 41258 - Portion of Block 4, Vermilion Area, Revised, Vermilion Parish, Louisiana**

The beds and bottoms of all water bodies belonging to the State of Louisiana located in Block 4, Vermilion Area, Revised, together with any present lands formed by accretion to the shoreline or islands formed therein, located in Vermilion Parish, Louisiana, owned by and not presently under mineral lease as of January 13, 2010, from the State of Louisiana, the geographical area of which is more fully described as follows: Beginning at the Northwest corner of Block 4, Vermilion Area, Revised, said point located on the Three Mile Line, as decreed by the Supreme Court of the United States, as determined by a Special Master appointed therein, in litigation styled *United States v. State of Louisiana et al No. 9 Original*, in 1975, having Coordinates of X = 1,632,624.12 and Y = 327,483.59; thence along the said Coastline the following courses: Southeasterly on a straight line to a point having Coordinates of X = 1,639,027.00 and Y = 326,645.00 and Southeasterly on a straight line to the Northeast corner of said Block 4 having Coordinates of X = 1,647,382.17 and Y = 325,204.61; thence South 2,604.61 feet along the East line of said Block 4 to a point having Coordinates of X = 1,647,382.17 and Y = 322,600.00; thence West 14,758.05 feet to a point on the West line of said Block 4 having Coordinates of X = 1,632,624.12 and Y = 322,600.00; thence North 4,883.59 feet along the West line of said Block 4 to the point of beginning, containing approximately **1,293.93 acres**, all as more particularly outlined on a plat on file in the Office of Mineral Resources, Department of Natural Resources. All bearings, distances and coordinates are based on Louisiana Coordinate System of 1927, (North or South Zone).

NOTE: The above description of the Tract nominated for lease has been provided and corrected, where required, exclusively by the nomination party. Any mineral lease selected from this Tract and awarded by the Louisiana State Mineral Board shall be without warranty of any kind, either express, implied, or statutory, including, but not limited to, the implied warranties of merchantability and fitness for a particular purpose. Should the mineral lease awarded by the Louisiana State Mineral Board be subsequently modified, cancelled or abrogated due to the existence of conflicting leases, operating agreements, private claims or other future obligations or conditions which may affect all or any portion of the leased Tract, it shall not relieve the Lessee of the obligation to pay any bonus due thereon to the Louisiana State Mineral Board, nor shall the Louisiana State Mineral Board be obligated to refund any consideration paid by the Lessor prior to such modification, cancellation, or abrogation, including, but not limited to, bonuses, rentals and royalties.

NOTE: The State of Louisiana does hereby reserve, and this lease shall be subject to, the imprescriptible right of surface use in the nature of a servitude in favor of the Department of Natural Resources, including its Offices and Commissions, for the sole purpose of implementing, constructing, servicing and maintaining approved coastal zone management and/or restoration projects. Utilization of any and all rights derived

under this lease by the mineral lessee, its agents, successors or assigns, shall not interfere with nor hinder the reasonable surface use by the Department of Natural Resources, its Offices or Commissions, as herein above reserved.

Applicant: THEOPHILUS OIL, GAS & LAND SERVICES, LLC

Bidder	Cash Payment	Price/Acre	Rental	Oil	Gas	Other

Legend  
10010030  
Blocks



VERMILION PARISH

P.O.B.

VR0003

VERMILION AREA, REVISED

GULF OF MEXICO

VR0004

VR0005

**TRACT 41259 - Portion of Block 5, Vermilion Area, Revised, Vermilion Parish, Louisiana**

The beds and bottoms of all water bodies belonging to the State of Louisiana located in Block 5, Vermilion Area, Revised, together with any present lands formed by accretion to the shoreline or islands formed therein, located in Vermilion Parish, Louisiana, owned by and not presently under mineral lease as of January 13, 2010, from the State of Louisiana, the geographical area of which is more fully described as follows: Beginning at the Northwest corner of Block 5, Vermilion Area, Revised, said point also located on the Louisiana Coastline, as decreed by the Supreme Court of the United States, as determined by a Special Master appointed therein, in litigation styled *United States v. State of Louisiana et al No. 9 Original*, in 1975, having Coordinates of X = 1,647,382.17 and Y = 325,204.61; thence along the said Coastline the following courses: Southeasterly on a straight line to a point having Coordinates of X = 1,648,656 and Y = 324,985, Southeasterly on a straight line to a point having Coordinates of X = 1,649,308 and Y = 324,684, Southeasterly on a straight line to a point having Coordinates of X = 1,650,220 and Y = 324,644, Southeasterly on a straight line to a point having Coordinates of X = 1,651,294 and Y = 324,333, Southeasterly on a straight line to a point having Coordinates of X = 1,653,430 and Y = 323,751, Southeasterly on a straight line to a point having Coordinates of X = 1,655,896 and Y = 323,305, Northeasterly on a straight line to a point having Coordinates of X = 1,657,050 and Y = 323,540, Southeasterly on a straight line to a point having Coordinates of X = 1,658,887 and Y = 323,134 and Northeasterly on a straight line to a point on the North boundary of State Lease No. 3762, as amended, having Coordinates of X = 1,659,926.16 and Y = 323,167.90; thence along the North and West boundary of said State Lease No. 3762 the following courses and distances: South 39 degrees 17 minutes 46 seconds West 1,178.95 feet to a corner having Coordinates of X = 1,659,179.50 and Y = 322,255.53, South 86 degrees 52 minutes 36 seconds West 2,663.81 feet to a corner having Coordinates of X = 1,656,519.65 and Y = 322,110.39, West 220.00 feet to a corner having Coordinates of X = 1,656,299.65 and Y = 322,110.39, South 85 degrees 55 minutes 00 seconds West 600.00 feet to a corner having Coordinates of X = 1,655,701.17 and Y = 322,067.67, South 83 degrees 30 minutes 00 seconds West 250.00 feet to a corner having Coordinates of X = 1,655,452.78 and Y = 322,039.37, South 78 degrees 15 minutes 00 seconds West 500.00 feet to a corner having Coordinates of X = 1,654,963.26 and Y = 321,937.55, South 74 degrees 15 minutes 00 seconds West 300.00 feet to a corner having Coordinates of X = 1,654,674.52 and Y = 321,856.11, South 67 degrees 50 minutes 03 seconds West 43.50 feet to a corner having Coordinates of X = 1,654,634.24 and Y = 321,839.70, South 08 degrees 34 minutes 13 seconds East 1,553.71 feet to a corner having Coordinates of X = 1,654,865.78 and Y = 320,303.34 and South 08 degrees 34 minutes 13 seconds East 283.57 feet to the Northeast corner of State Lease No. 19967 having Coordinates of X = 1,654,908.04 and Y = 320,022.93; thence along the Northeast and the Northwest boundary of said State Lease No. 19967 the following courses and distances: North 71 degrees 10 minutes 28 seconds West 2,678.72 feet to a

corner having Coordinates of X = 1,652,372.61 and Y = 320,887.32 and South 63 degrees 25 minutes 46 seconds West 3,100.02 feet to the Southeast corner of State Lease No. 19995 having Coordinates of X = 1,649,600.00 and Y = 319,500.68; thence along the East and North boundary of said State Lease No. 19995 the following courses and distances: North 1,099.32 feet to a corner having Coordinates of X = 1,649,600.00 and Y = 320,600.00 and West 2,217.83 feet to a point on the West line of said Block 5 having Coordinates of X = 1,647,382.17 and Y = 320,600.00; thence North 4,604.61 feet along the West line of said Block 5 to the point of beginning, containing approximately **803.15 acres**, all as more particularly outlined on a plat on file in the Office of Mineral Resources, Department of Natural Resources. All bearings, distances and coordinates are based on Louisiana Coordinate System of 1927, (North or South Zone).

NOTE: The above description of the Tract nominated for lease has been provided and corrected, where required, exclusively by the nomination party. Any mineral lease selected from this Tract and awarded by the Louisiana State Mineral Board shall be without warranty of any kind, either express, implied, or statutory, including, but not limited to, the implied warranties of merchantability and fitness for a particular purpose. Should the mineral lease awarded by the Louisiana State Mineral Board be subsequently modified, cancelled or abrogated due to the existence of conflicting leases, operating agreements, private claims or other future obligations or conditions which may affect all or any portion of the leased Tract, it shall not relieve the Lessee of the obligation to pay any bonus due thereon to the Louisiana State Mineral Board, nor shall the Louisiana State Mineral Board be obligated to refund any consideration paid by the Lessor prior to such modification, cancellation, or abrogation, including, but not limited to, bonuses, rentals and royalties.

NOTE: The State of Louisiana does hereby reserve, and this lease shall be subject to, the imprescriptible right of surface use in the nature of a servitude in favor of the Department of Natural Resources, including its Offices and Commissions, for the sole purpose of implementing, constructing, servicing and maintaining approved coastal zone management and/or restoration projects. Utilization of any and all rights derived under this lease by the mineral lessee, its agents, successors or assigns, shall not interfere with nor hinder the reasonable surface use by the Department of Natural Resources, its Offices or Commissions, as herein above reserved.

Applicant: THEOPHILUS OIL, GAS & LAND SERVICES, LLC

Bidder	Cash Payment	Price/Acre	Rental	Oil	Gas	Other

**Legend**

- 10010043
- Blocks
- Active\_Leases



VERMILION PARISH

P.O.B.

GULF OF MEXICO

VR0004

VERMILION AREA, REVISED

SL 19995

VR0005

SL 3762

SL 19967

VR0016

**TRACT 41260 - Portion of Blocks 18, and 3, Vermilion Area, Revised, Vermilion Parish, Louisiana**

The beds and bottoms of all water bodies belonging to the State of Louisiana located in Blocks 18, and 3, Vermilion Area, Revised, together with any present lands formed by accretion to the shoreline or islands formed therein, located in Vermilion Parish, Louisiana, owned by and not presently under mineral lease as of January 13, 2010, from the State of Louisiana, the geographical area of which is more fully described as follows: Beginning at a point within Block 3, Vermilion Area, Revised, having Coordinates of X = 1,627,130.00 and Y = 323,387.17; thence East 5,494.12 to a point on the East line of said Block 3, having Coordinates of X = 1,632,624.12 and Y = 323,387.17; thence South 14,299.77 feet to the Southeast corner of Block 18, also being a point on the Three Mile Line, as decreed by the Supreme Court of the United States, as determined by a Special Master appointed therein, in litigation styled *United States v. State of Louisiana et al No. 9 Original*, in 1975, having Coordinates of X = 1,632,624.12 and Y = 309,087.40; thence Northwesterly on a straight line to a point having Coordinates of X = 1,627,130 and Y = 309,807; thence North 13,580.17 feet to the point of beginning, containing approximately **1,758.22 acres, LESS AND EXCEPT** that portion thereof, if any, lying seaward of the line three nautical miles from the coast line of Louisiana, as said three mile line has been decreed by the Supreme Court of the United States, as determined by a Special Master appointed therein, in litigation styled **United States v. State of Louisiana et al No. 9 Original**, in 1975, all as more particularly outlined on a plat in the Office of Mineral Resources, Department of Natural Resources. All bearings, distances and coordinates are based on the Louisiana Coordinate System of 1927, (South Zone).

NOTE: The above description of the Tract nominated for lease has been provided and corrected, where required, exclusively by the nomination party. Any mineral lease selected from this Tract and awarded by the Louisiana State Mineral Board shall be without warranty of any kind, either express, implied, or statutory, including, but not limited to, the implied warranties of merchantability and fitness for a particular purpose. Should the mineral lease awarded by the Louisiana State Mineral Board be subsequently modified, cancelled or abrogated due to the existence of conflicting leases, operating agreements, private claims or other future obligations or conditions which may affect all or any portion of the leased Tract, it shall not relieve the Lessee of the obligation to pay any bonus due thereon to the Louisiana State Mineral Board, nor shall the Louisiana State Mineral Board be obligated to refund any consideration paid by the Lessor prior to such modification, cancellation, or abrogation, including, but not limited to, bonuses, rentals and royalties.

NOTE: The State of Louisiana does hereby reserve, and this lease shall be subject to, the imprescriptible right of surface use in the nature of a servitude in favor of the Department of Natural Resources, including its Offices and Commissions, for the sole purpose of implementing,



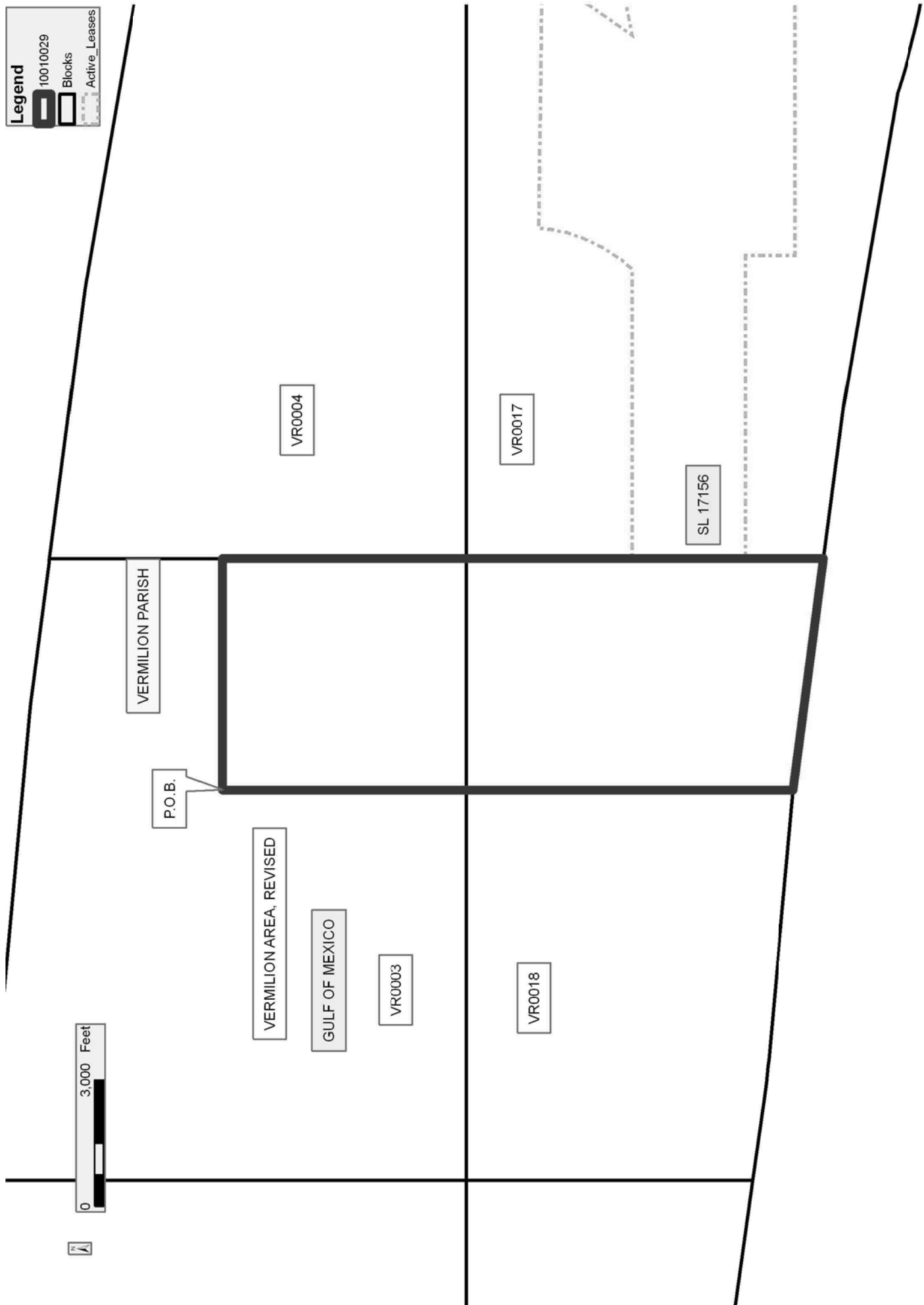
constructing, servicing and maintaining approved coastal zone management and/or restoration projects. Utilization of any and all rights derived under this lease by the mineral lessee, its agents, successors or assigns, shall not interfere with nor hinder the reasonable surface use by the Department of Natural Resources, its Offices or Commissions, as herein above reserved.

Applicant: THEOPHILUS OIL, GAS & LAND SERVICES, LLC

Bidder	Cash Payment	Price/Acre	Rental	Oil	Gas	Other

**Legend**

-  10010029
-  Blocks
-  Active\_Leases



**TRACT 41261 - Portion of Block 6, Vermilion Area, Revised, Vermilion Parish, Louisiana**

The beds and bottoms of all water bodies belonging to the State of Louisiana located in Block 6, Vermilion Area, Revised, together with any present lands formed by accretion to the shoreline or islands formed therein, located in Vermilion Parish, Louisiana, owned by and not presently under mineral lease as of January 13, 2010, from the State of Louisiana, the geographical area of which is more fully described as follows: Beginning at the Northwest corner of Block 6, Vermilion Area, Revised, point located on the Louisiana Coastline, as decreed by the Supreme Court of the United States, as determined by a Special Master appointed therein, in litigation styled *United States v. State of Louisiana et al No. 9 Original*, in 1975, having Coordinates of X = 1,662,140.22 and Y = 322,702.84; thence along the said Coastline the following courses: thence Southeasterly on a straight line to a point having Coordinates of X = 1,663,290 and Y = 322,457; thence Southeasterly on a straight line to a point having Coordinates of X = 1,665,833 and Y = 321,916; Southeasterly on a straight line to a point having Coordinates of X = 1,667,091 and Y = 321,595; Southeasterly on a straight line to a point having Coordinates of X = 1,669,012 and Y = 321,069; Southeasterly on a straight line to a point having Coordinates of X = 1,671,018 and Y = 320,396; Southeasterly on a straight line to a point having Coordinates of X = 1,675,346 and Y = 319,196; and Southeasterly on a straight line to the Northeast corner of said Block 6 having Coordinates of X = 1,676,898.27 and Y = 318,813.64; thence South 1949.84 feet along the East line of said Block 6 to a point having Coordinates of X = 1,676,898.27 and Y = 316,863.80; thence West 14,758.05 feet to a point on the West line of said Block 6 having Coordinates of X = 1,662,140.22 and Y = 316,863.80; thence North 1,758.00 feet along the West line of said Block 6 to the most Southern corner of State Lease No. 19968, having Coordinates of X = 1,662,140.22 and Y = 318,621.80; thence along the boundary of said State Lease No. 19968 the following courses and distances: North 75 Degrees 27 Minutes 23 Seconds East 1,301.70 feet to a point having Coordinates of X = 1,663,400.21 and Y = 318,948.68; thence North 13 Degrees 15 Minutes 01 Seconds West 1,722.64 feet to a point having Coordinates of X = 1,663,005.37 and Y = 320,625.46; thence North 55 Degrees 19 Minutes 45 Seconds West 1,051.94 feet to a point on the West line of said Block 6 having Coordinates of X = 1,662,140.22 and Y = 321,223.87; thence North 1,478.97 feet along the West line of said Block 6 to the point of beginning, containing approximately **1,294.15 acres**, all as more particularly outlined on a plat on file in the Office of Mineral Resources, Department of Natural Resources. All bearings, distances and coordinates are based on Louisiana Coordinate System of 1927, (North or South Zone).

NOTE: The above description of the Tract nominated for lease has been provided and corrected, where required, exclusively by the nomination party. Any mineral lease selected from this Tract and awarded by the Louisiana State Mineral Board shall be without warranty of any kind,

either express, implied, or statutory, including, but not limited to, the implied warranties of merchantability and fitness for a particular purpose. Should the mineral lease awarded by the Louisiana State Mineral Board be subsequently modified, cancelled or abrogated due to the existence of conflicting leases, operating agreements, private claims or other future obligations or conditions which may affect all or any portion of the leased Tract, it shall not relieve the Lessee of the obligation to pay any bonus due thereon to the Louisiana State Mineral Board, nor shall the Louisiana State Mineral Board be obligated to refund any consideration paid by the Lessor prior to such modification, cancellation, or abrogation, including, but not limited to, bonuses, rentals and royalties.

NOTE: The State of Louisiana does hereby reserve, and this lease shall be subject to, the imprescriptible right of surface use in the nature of a servitude in favor of the Department of Natural Resources, including its Offices and Commissions, for the sole purpose of implementing, constructing, servicing and maintaining approved coastal zone management and/or restoration projects. Utilization of any and all rights derived under this lease by the mineral lessee, its agents, successors or assigns, shall not interfere with nor hinder the reasonable surface use by the Department of Natural Resources, its Offices or Commissions, as herein above reserved.

Applicant: THEOPHILUS OIL, GAS & LAND SERVICES, LLC

Bidder	Cash Payment	Price/Acre	Rental	Oil	Gas	Other

**Legend**

- 10010037
- Blocks
- Active\_Leases



VERMILION PARISH

P.O.B.

SL 3762

VR0005

SL 19968

VR0016

VR0007

VR0006

VERMILION AREA, REVISED

GULF OF MEXICO

**TRACT 41262 - Portion of Block 4, Vermilion Area, Revised, Vermilion Parish, Louisiana**

The beds and bottoms of all water bodies belonging to the State of Louisiana located in Block 4, Vermilion Area, Revised, together with any present lands formed by accretion to the shoreline or islands formed therein, located in Vermilion Parish, Louisiana, owned by and not presently under mineral lease as of January 13, 2010, from the State of Louisiana, the geographical area of which is more fully described as follows: Beginning at a point on the West line of Block 4, Vermilion Area, Revised having Coordinates of X = 1,632,624.12 and Y = 322,600.00; thence East 14,758.05 feet to a point on the East line of said Block 4 having Coordinates of X = 1,647,382.17 and Y = 322,600.00; thence South 2,000.00 feet along the East line of said Block 4 to a corner located on the North boundary of State Lease No. 19995 having Coordinates of X = 1,647,382.17 and Y = 320,600.00; thence West 2,282.17 feet along the North boundary of said State Lease No. 19995 to its Northwest corner having Coordinates of X = 1,645,100.00 and Y = 320,600.00; thence South 3,017.18 feet along the West boundary of said State Lease No. 19995 to its Southwest corner located on the South line of said Block 4 having Coordinates of X = 1,645,100.00 and Y = 317,582.82; thence West 12,475.88 feet along the South line of said Block 4 to its Southwest corner having Coordinates of X = 1,632,624.12 and Y = 317,582.82; thence North 5,017.18 feet along the West line of said Block 4 to the point of beginning, containing approximately **1,541.74 acres**, all as more particularly outlined on a plat on file in the Office of Mineral Resources, Department of Natural Resources. All bearings, distances and coordinates are based on Louisiana Coordinate System of 1927, (North or South Zone).

NOTE: The above description of the Tract nominated for lease has been provided and corrected, where required, exclusively by the nomination party. Any mineral lease selected from this Tract and awarded by the Louisiana State Mineral Board shall be without warranty of any kind, either express, implied, or statutory, including, but not limited to, the implied warranties of merchantability and fitness for a particular purpose. Should the mineral lease awarded by the Louisiana State Mineral Board be subsequently modified, cancelled or abrogated due to the existence of conflicting leases, operating agreements, private claims or other future obligations or conditions which may affect all or any portion of the leased Tract, it shall not relieve the Lessee of the obligation to pay any bonus due thereon to the Louisiana State Mineral Board, nor shall the Louisiana State Mineral Board be obligated to refund any consideration paid by the Lessor prior to such modification, cancellation, or abrogation, including, but not limited to, bonuses, rentals and royalties.



NOTE: The State of Louisiana does hereby reserve, and this lease shall be subject to, the imprescriptible right of surface use in the nature of a servitude in favor of the Department of Natural Resources, including its Offices and Commissions, for the sole purpose of implementing, constructing, servicing and maintaining approved coastal zone management

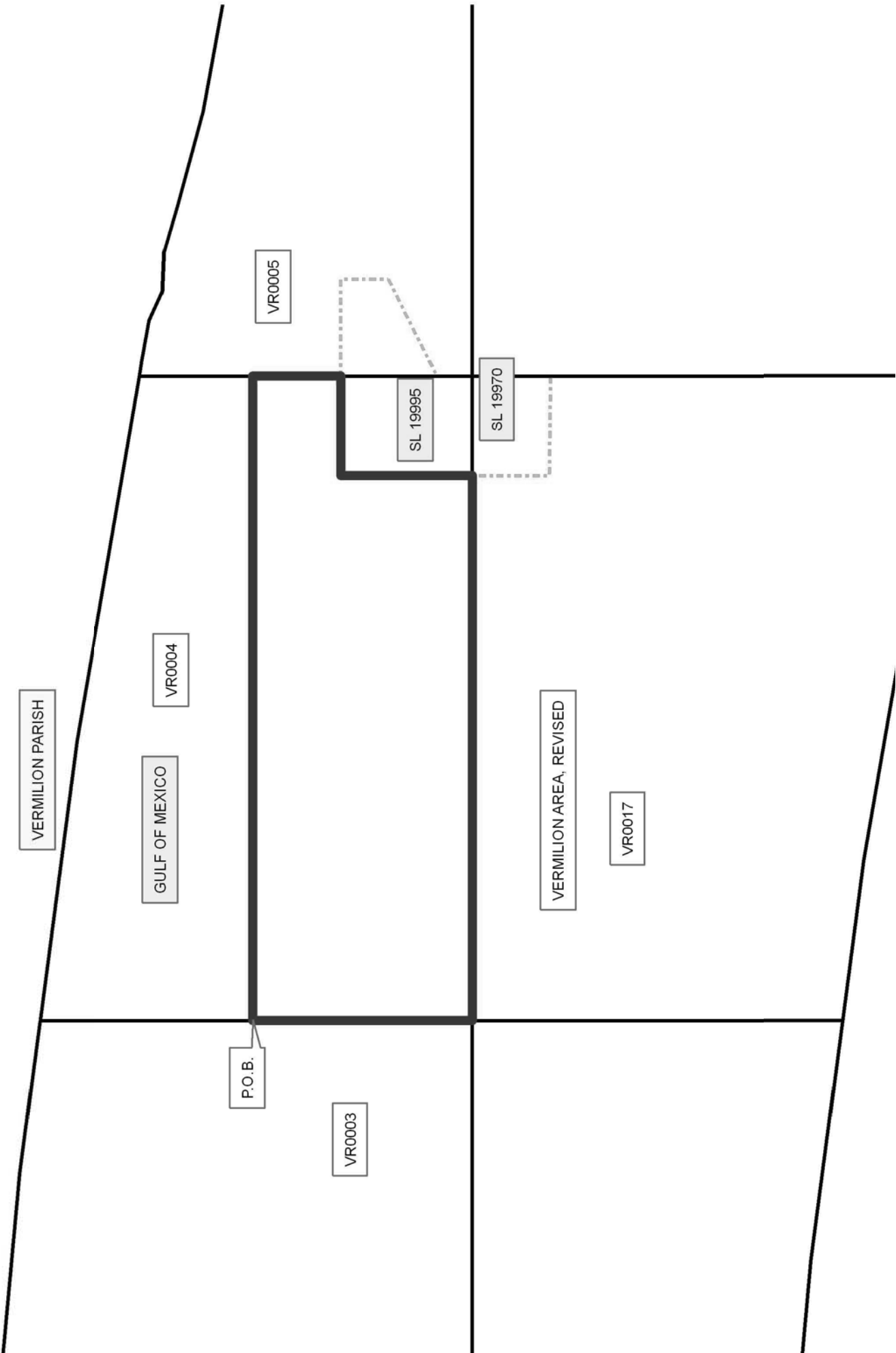
and/or restoration projects. Utilization of any and all rights derived under this lease by the mineral lessee, its agents, successors or assigns, shall not interfere with nor hinder the reasonable surface use by the Department of Natural Resources, its Offices or Commissions, as herein above reserved.

Applicant: THEOPHILUS OIL, GAS & LAND SERVICES, LLC

Bidder	Cash Payment	Price/Acre	Rental	Oil	Gas	Other

**Legend**

-  10010031
-  Blocks
-  Active\_Leases





**TRACT 41263 - Portion of Block 7, Vermilion Area, Revised, Vermilion Parish, Louisiana**

The beds and bottoms of all water bodies belonging to the State of Louisiana located in Block 7, Vermilion Area, Revised, together with any present lands formed by accretion to the shoreline or islands formed therein, located in Vermilion Parish, Louisiana, owned by and not presently under mineral lease as of January 13, 2010, from the State of Louisiana, the geographical area of which is more fully described as follows: Beginning at the Northwest corner of Block 7 Vermilion Area, Revised, said point located on the Louisiana Coastline, as decreed by the Supreme Court of the United States, as determined by a Special Master appointed therein, in litigation styled *United States v. State of Louisiana et al No. 9 Original*, in 1975, having Coordinates of X = 1,676,898.27 and Y = 318,813.64; thence along the said Coastline, the following courses: Southeasterly on a straight line to a point having Coordinates of X = 1,678,545.00 and Y = 318,408.00; thence Southeasterly on a straight line to a point having Coordinates of X = 1,687,270.00 and Y = 316,510.00; thence Southeasterly on a straight line to a point having Coordinates of X = 1,689,980.00 and Y = 316,170.00; thence Southeasterly on a straight line to the Northeast corner of said Block 7 having Coordinates of X = 1,691,656.32 and Y = 316,053.41; thence South 5,028.64 feet along the East line of said Block 7 to its Southeast corner having Coordinates of X = 1,691,656.32 and Y = 311,024.77; thence West 14,758.05 feet along the South line of said Block 7 to its Southwest corner having Coordinates of X = 1,676,898.27 and Y = 311,024.77; thence North 7,788.87 feet along the West line of said Block 7 to the point of beginning, containing approximately **2101.98 acres**, all as more particularly outlined on a plat on file in the Office of Mineral Resources, Department of Natural Resources. All bearings, distances and coordinates are based on Louisiana Coordinate System of 1927, (North or South Zone).

NOTE: The above description of the Tract nominated for lease has been provided and corrected, where required, exclusively by the nomination party. Any mineral lease selected from this Tract and awarded by the Louisiana State Mineral Board shall be without warranty of any kind, either express, implied, or statutory, including, but not limited to, the implied warranties of merchantability and fitness for a particular purpose. Should the mineral lease awarded by the Louisiana State Mineral Board be subsequently modified, cancelled or abrogated due to the existence of conflicting leases, operating agreements, private claims or other future obligations or conditions which may affect all or any portion of the leased Tract, it shall not relieve the Lessee of the obligation to pay any bonus due thereon to the Louisiana State Mineral Board, nor shall the Louisiana State Mineral Board be obligated to refund any consideration paid by the Lessor prior to such modification, cancellation, or abrogation, including, but not limited to, bonuses, rentals and royalties.

NOTE: The State of Louisiana does hereby reserve, and this lease shall be subject to, the imprescriptible right of surface use in the nature of a


servitude in favor of the Department of Natural Resources, including its Offices and Commissions, for the sole purpose of implementing, constructing, servicing and maintaining approved coastal zone management and/or restoration projects. Utilization of any and all rights derived under this lease by the mineral lessee, its agents, successors or assigns, shall not interfere with nor hinder the reasonable surface use by the Department of Natural Resources, its Offices or Commissions, as herein above reserved.

NOTE: The Department of Wildlife and Fisheries has designated certain areas in the coastal waters of the State of Louisiana as Oyster Seed Bed Areas. The exact location of those Seed Bed Areas must be obtained from the Department of Wildlife and Fisheries and any work done under a mineral lease from the State of Louisiana may necessarily be conducted in conformity with the rules and regulations promulgated by the said Department of Wildlife and Fisheries for Oyster Seed Bed Areas.

Applicant: THEOPHILUS OIL, GAS & LAND SERVICES, LLC

Bidder	Cash Payment	Price/Acre	Rental	Oil	Gas	Other

**Legend**

-  10010041
-  Blocks
-  Active\_Leases



VERMILION PARISH

P.O.B.

GULF OF MEXICO

VR0006

VR0007

VR0008

VERMILION AREA, REVISED

SL 861

VR0015

VR0013

**TRACT 41264 - Portion of Blocks 16, and 5, Vermilion Area, Revised, Vermilion Parish, Louisiana**

The beds and bottoms of all water bodies belonging to the State of Louisiana located in Blocks 16, and 5, Vermilion Area, Revised, together with any present lands formed by accretion to the shoreline or islands formed therein, located in Vermilion Parish, Louisiana, owned by and not presently under mineral lease as of January 13, 2010, from the State of Louisiana, the geographical area of which is more fully described as follows: Beginning at the Southeast corner of State Lease No. 3762, as amended, located on the East line of Block 5, Vermilion Area, Revised, having Coordinates of X = 1,662,140.22 and Y = 318,057.87; thence South 475.05 feet along the East line of said Block 5 to its Southeast corner, also being the Northeast corner of Block 16 having Coordinates of X = 1,662,140.22 and Y = 317,582.82; thence South 13,549.69 along the East line of said Block 16 to a point on the Three Mile Line, as decreed by the Supreme Court of the United States, as determined by a Special Master appointed therein, in litigation styled *United States v. State of Louisiana et al No. 9 Original*, in 1975, having Coordinates of X = 1,662,140.22 and Y = 304,033.13; thence along the said Three Mile Line the following courses and distances: Northwesterly on a straight line to a point having Coordinates of X = 1,661,678 and Y = 304,151, Northwesterly on a straight line to a point having Coordinates of X = 1,659,494 and Y = 304,616, Northwesterly on arc having a radius of 18,240.60 feet and a center located at X = 1,663,290 and Y = 322,457 to a point having Coordinates of X = 1,659,476 and Y = 304,620, Northwesterly on a straight line to a point having Coordinates of X = 1,658,120 and Y = 304,910 and Northwesterly on an arc having a radius of 18,240.60 feet and a center located at X = 1,658,887 and Y = 323,134 to the Southeast corner of State Lease No. 17728 having Coordinates of X = 1,656,354 and Y = 305,070; thence North 5,000.00 feet along the East line of said State Lease No. 17728 to its Northeast corner, also being the Southeast corner of State Lease No. 17159, as amended having Coordinates of X = 1,656,354.00 and Y = 310,070.00; thence North 1,912.24 feet along the East boundary of said State Lease No. 17159 to its Northeast corner having Coordinates of X = 1,656,354.00 and Y = 311,982.24; thence North 1,809.66 feet to a point on the Southeasterly boundary of State Lease No. 3763, as amended having Coordinates of X = 1,656,354.00 and Y = 313,791.90; thence along the Southeasterly boundary of said State Lease No. 3763 the following courses and distances: North 56 degrees 25 minutes 23 seconds East 1,047.66 feet to a corner having Coordinates of X = 1,657,226.85 and Y = 314,371.31, North 87 degrees 18 minutes 26 seconds East 596.22 feet to a corner having Coordinates of X = 1,657,822.41 and Y = 314,399.32, North 58 degrees 44 minutes 03 seconds East 1,687.27 feet to a corner having Coordinates of X = 1,659,264.63 and Y = 315,275.03, North 59 degrees 16 minutes 15 seconds East 1,025.81 feet to a corner having Coordinates of X = 1,660,146.41 and Y = 315,799.20, North 54 degrees 35 minutes 36 seconds East 780.63 feet to a corner having Coordinates of X = 1,660,782.67 and Y = 316,251.48, North 50 degrees 50 minutes 26 seconds East 743.10 feet to a corner having Coordinates of X = 1,661,358.86 and Y = 316,720.73 and North 20 degrees 42

minutes 29 seconds East 921.63 feet to its Northeast corner located on the North line of said Block 16 and the South line of Block 5, also being the Southeast corner of State Lease No. 3762 having Coordinates of X = 1,661,684.76 and Y = 317,582.82; thence along the Southeasterly boundary of said State Lease No. 3762 the following courses and distances: North 20 degrees 42 minutes 26 seconds East 371.16 feet to a corner having Coordinates of X = 1,661,816.00 and Y = 317,930.00 and North 68 degrees 28 minutes 34 seconds East 348.52 feet to the point of beginning, containing approximately **1,437.34 acres, LESS AND EXCEPT** that portion thereof, if any, lying seaward of the line three nautical miles from the coast line of Louisiana, as said three mile line has been decreed by the Supreme Court of the United States, as determined by a Special Master appointed therein, in litigation styled **United States v. State of Louisiana et al No. 9 Original**, in 1975, all as more particularly outlined on a plat in the Office of Mineral Resources, Department of Natural Resources. All bearings, distances and coordinates are based on the Louisiana Coordinate System of 1927, (South Zone).

NOTE: The above description of the Tract nominated for lease has been provided and corrected, where required, exclusively by the nomination party. Any mineral lease selected from this Tract and awarded by the Louisiana State Mineral Board shall be without warranty of any kind, either express, implied, or statutory, including, but not limited to, the implied warranties of merchantability and fitness for a particular purpose. Should the mineral lease awarded by the Louisiana State Mineral Board be subsequently modified, cancelled or abrogated due to the existence of conflicting leases, operating agreements, private claims or other future obligations or conditions which may affect all or any portion of the leased Tract, it shall not relieve the Lessee of the obligation to pay any bonus due thereon to the Louisiana State Mineral Board, nor shall the Louisiana State Mineral Board be obligated to refund any consideration paid by the Lessor prior to such modification, cancellation, or abrogation, including, but not limited to, bonuses, rentals and royalties.

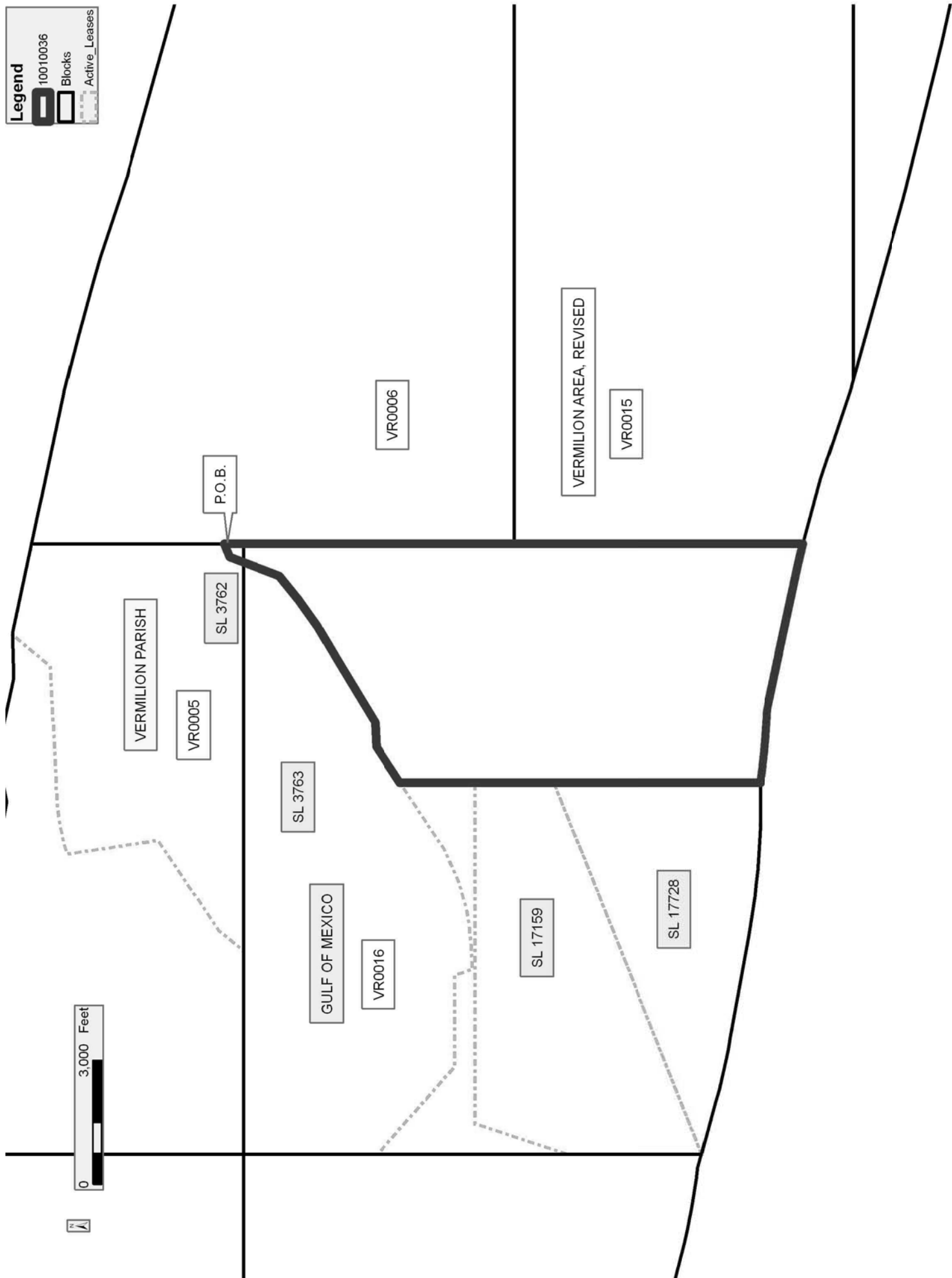
NOTE: The State of Louisiana does hereby reserve, and this lease shall be subject to, the imprescriptible right of surface use in the nature of a servitude in favor of the Department of Natural Resources, including its Offices and Commissions, for the sole purpose of implementing, constructing, servicing and maintaining approved coastal zone management and/or restoration projects. Utilization of any and all rights derived under this lease by the mineral lessee, its agents, successors or assigns, shall not interfere with nor hinder the reasonable surface use by the Department of Natural Resources, its Offices or Commissions, as herein above reserved.

Applicant: THEOPHILUS OIL, GAS & LAND SERVICES, LLC

Bidder	Cash Payment	Price/Acre	Rental	Oil	Gas	Other

**Legend**

- 10010036
- Blocks
- Active\_Leases



**TRACT 41265 - Portion of Block 17, Vermilion Area, Revised, Vermilion Parish, Louisiana**

The beds and bottoms of all water bodies belonging to the State of Louisiana located in Block 17, Vermilion Area, Revised, together with any present lands formed by accretion to the shoreline or islands formed therein, located in Vermilion Parish, Louisiana, owned by and not presently under mineral lease as of January 13, 2010, from the State of Louisiana, the geographical area of which is more fully described as follows: Beginning at the Northwest corner of Block 17, Vermilion Area, Revised, having Coordinates of X = 1,632,624.12 and Y = 317,582.82; thence East 12,475.88 feet along the North line of said Block 17 to the Northwest corner of State Lease No. 19970 having Coordinates of X = 1,645,100.00 and Y = 317,582.82; thence South 1,785.33 feet along the West boundary of said State Lease No. 19970 to its Southwest corner located on the North boundary of State Lease No. 17156 having Coordinates of X = 1,645,100.00 and Y = 315,797.49; thence along the North and West boundary of said State Lease No. 17156 the following courses and distances: North 89 degrees 16 minutes 38 seconds West 4,628.69 feet to a corner having Coordinates of X = 1,640,471.68 and Y = 315,855.88, South 06 degrees 55 minutes 12 seconds West 303.86 feet to a corner having Coordinates of X = 1,640,435.07, and Y = 315,554.23; thence South 11 degrees 08 minutes 33 seconds West 369.26 feet to a corner having Coordinates of X = 1,640,363.71, and Y = 315,191.93; thence South 19 degrees 26 minutes 17 seconds West 413.81 feet to a corner having Coordinates of X = 1,640,226.00 and Y = 314,801.71; thence South 24 degrees 11 minutes 25 seconds West 173.66 feet to a corner having Coordinates of X = 1,640,154.84 and Y = 314,643.30, South 27 degrees 19 minutes 09 seconds West 398.94 feet to a corner having Coordinates of X = 1,639,971.75 and Y = 314,288.86 and South 33 degrees 56 minutes 36 seconds West 463.79 feet to a corner on the East boundary of State Lease No. 19969 having Coordinates of X = 1,639,712.78 and Y = 313,904.10; thence North 49 degrees 30 minutes 17 seconds West 1,788.79 feet along the Northeast boundary of said State Lease No. 19969 to its Northeast corner having Coordinates of X = 1,638,352.48 and Y = 315,065.71; thence West 1,328.36 feet along the North boundary of said State Lease No. 19969 to its Northwest corner, also being the Northeast corner of State Lease No. 19971 having Coordinates of X = 1,637,024.12 and Y = 315,065.71; thence West 450.11 feet along the North boundary of said State Lease No. 19971 to its Northwest corner having Coordinates of X = 1,636,574.01 and Y = 315,065.71; thence South 65 degrees 55 minutes 50 seconds West 3,471.20 feet along the Northwest boundary of said State Lease No. 19971 to its Southwest corner located on the North boundary of said State Lease No. 17156 having Coordinates of X = 1,633,404.62 and Y = 313,650.01; thence West 780.50 feet along the North boundary of said State Lease No. 17156 to its Northwest corner located on the West line of said Block 17 having Coordinates of X = 1,632,624.12 and Y = 313,650.01; thence North 3,932.81 feet along the West line of said Block 17 to the point of beginning, containing approximately **743.09 acres**, all as more particularly outlined on a plat on file in the Office of Mineral Resources, Department



of Natural Resources. All bearings, distances and coordinates are based on Louisiana Coordinate System of 1927, (North or South Zone).

NOTE: The above description of the Tract nominated for lease has been provided and corrected, where required, exclusively by the nomination party. Any mineral lease selected from this Tract and awarded by the Louisiana State Mineral Board shall be without warranty of any kind, either express, implied, or statutory, including, but not limited to, the implied warranties of merchantability and fitness for a particular purpose. Should the mineral lease awarded by the Louisiana State Mineral Board be subsequently modified, cancelled or abrogated due to the existence of conflicting leases, operating agreements, private claims or other future obligations or conditions which may affect all or any portion of the leased Tract, it shall not relieve the Lessee of the obligation to pay any bonus due thereon to the Louisiana State Mineral Board, nor shall the Louisiana State Mineral Board be obligated to refund any consideration paid by the Lessor prior to such modification, cancellation, or abrogation, including, but not limited to, bonuses, rentals and royalties.

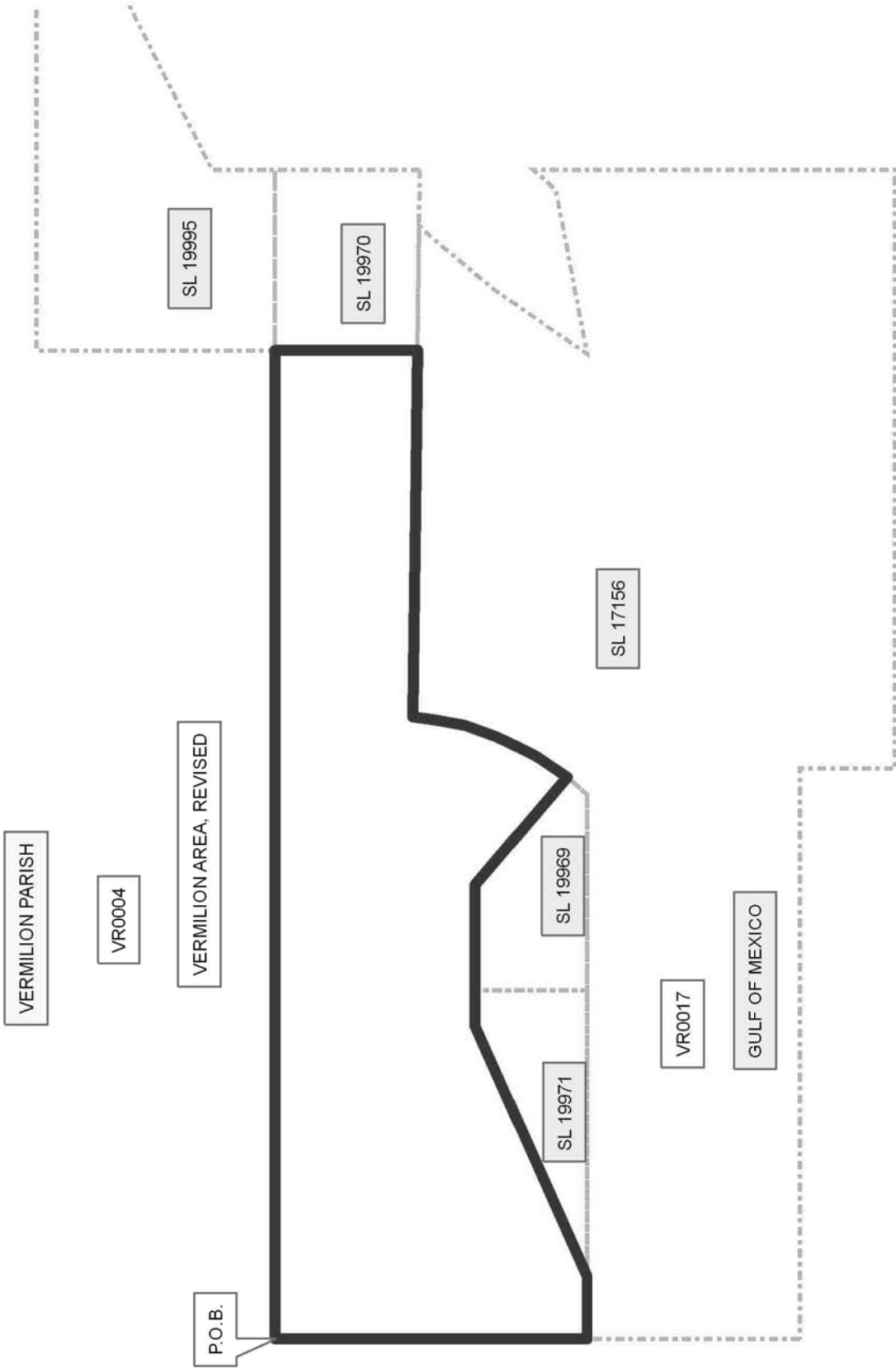
NOTE: The State of Louisiana does hereby reserve, and this lease shall be subject to, the imprescriptible right of surface use in the nature of a servitude in favor of the Department of Natural Resources, including its Offices and Commissions, for the sole purpose of implementing, constructing, servicing and maintaining approved coastal zone management and/or restoration projects. Utilization of any and all rights derived under this lease by the mineral lessee, its agents, successors or assigns, shall not interfere with nor hinder the reasonable surface use by the Department of Natural Resources, its Offices or Commissions, as herein above reserved.

Applicant: THEOPHILUS OIL, GAS & LAND SERVICES, LLC

Bidder	Cash Payment	Price/Acre	Rental	Oil	Gas	Other

**Legend**

- 10010032
- Active\_Leases



**TRACT 41266 - Portion of Block 6, Vermilion Area, Revised, Vermilion Parish, Louisiana**

The beds and bottoms of all water bodies belonging to the State of Louisiana located in Block 6, Vermilion Area, Revised, together with any present lands formed by accretion to the shoreline or islands formed therein, located in Vermilion Parish, Louisiana, owned by and not presently under mineral lease as of January 13, 2010, from the State of Louisiana, the geographical area of which is more fully described as follows: Beginning at a point on the West line of Block 6, Vermilion Area, Revised having Coordinates of X = 1,662,140.22 and Y = 316,863.80; thence East 14,758.05 feet to a point on the East line of said Block 6 having Coordinates of X = 1,676,898.27 and Y = 316,863.80; thence South 5,839.03 feet along the East line of said Block 6 to its Southeast corner having Coordinates of X = 1,676,898.27 and Y = 311,024.77; thence West 14,758.05 feet along the South line of said Block 6 to its Southwest corner having Coordinates of X = 1,662,140.22 and Y = 311,024.77; thence North 5,839.03 feet along the West line of said Block 6 to the point of beginning, containing approximately **1,978.25 acres**, all as more particularly outlined on a plat on file in the Office of Mineral Resources, Department of Natural Resources. All bearings, distances and coordinates are based on Louisiana Coordinate System of 1927, (North or South Zone).

NOTE: The above description of the Tract nominated for lease has been provided and corrected, where required, exclusively by the nomination party. Any mineral lease selected from this Tract and awarded by the Louisiana State Mineral Board shall be without warranty of any kind, either express, implied, or statutory, including, but not limited to, the implied warranties of merchantability and fitness for a particular purpose. Should the mineral lease awarded by the Louisiana State Mineral Board be subsequently modified, cancelled or abrogated due to the existence of conflicting leases, operating agreements, private claims or other future obligations or conditions which may affect all or any portion of the leased Tract, it shall not relieve the Lessee of the obligation to pay any bonus due thereon to the Louisiana State Mineral Board, nor shall the Louisiana State Mineral Board be obligated to refund any consideration paid by the Lessor prior to such modification, cancellation, or abrogation, including, but not limited to, bonuses, rentals and royalties.

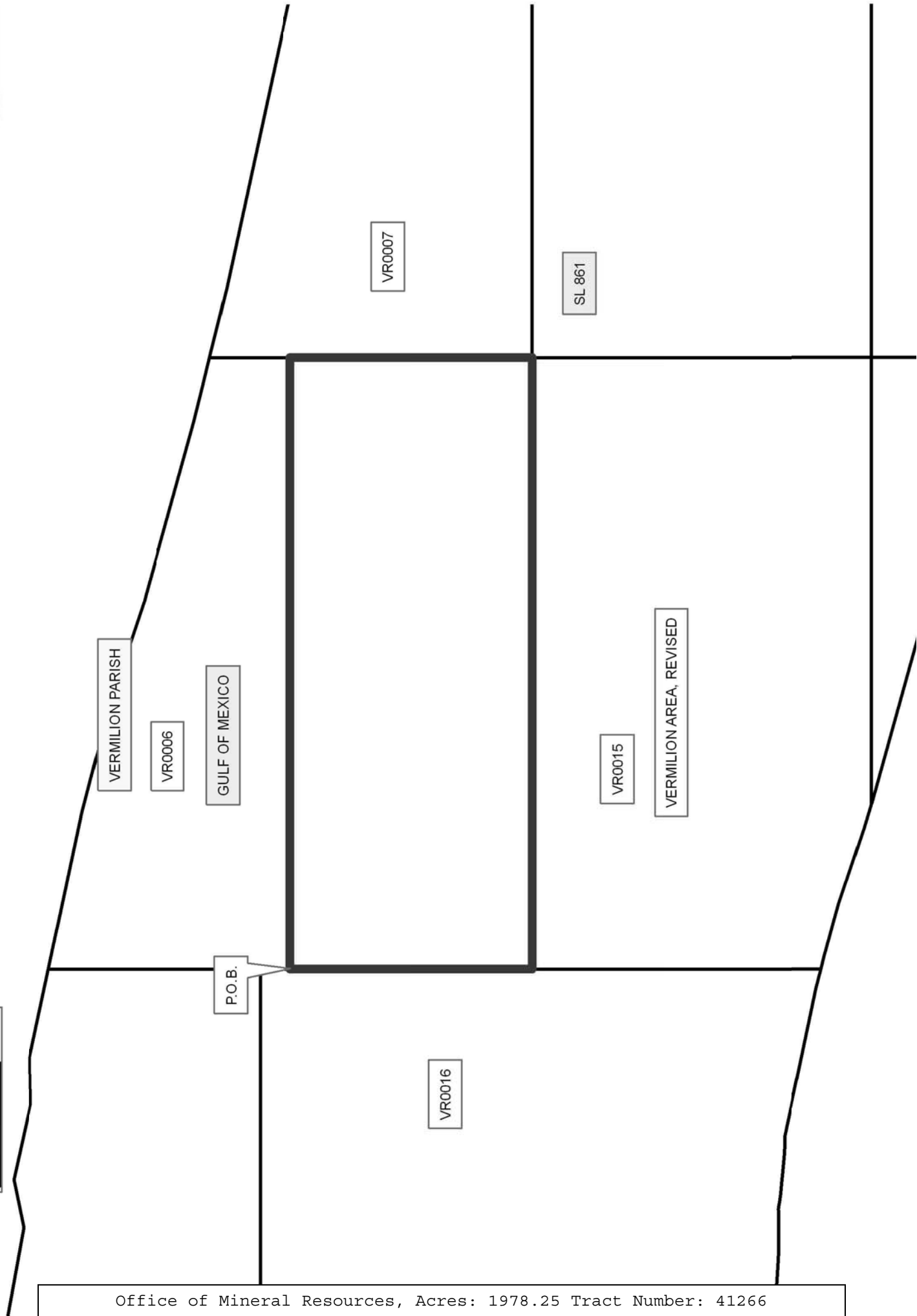
NOTE: The State of Louisiana does hereby reserve, and this lease shall be subject to, the imprescriptible right of surface use in the nature of a servitude in favor of the Department of Natural Resources, including its Offices and Commissions, for the sole purpose of implementing, constructing, servicing and maintaining approved coastal zone management and/or restoration projects. Utilization of any and all rights derived under this lease by the mineral lessee, its agents, successors or assigns, shall not interfere with nor hinder the reasonable surface use by the Department of Natural Resources, its Offices or Commissions, as herein above reserved.

Applicant: THEOPHILUS OIL, GAS & LAND SERVICES, LLC

Bidder	Cash Payment	Price/Acre	Rental	Oil	Gas	Other

**Legend**

- 10010038
- Blocks
- Active\_Leases



**TRACT 41267 - Portion of Block 17, Vermilion Area, Revised, Vermilion Parish, Louisiana**

The beds and bottoms of all water bodies belonging to the State of Louisiana located in Block 17, Vermilion Area, Revised, together with any present lands formed by accretion to the shoreline or islands formed therein, located in Vermilion Parish, Louisiana, owned by and not presently under mineral lease as of January 13, 2010, from the State of Louisiana, the geographical area of which is more fully described as follows: Beginning at the Southeast corner of State Lease No. 19970 said point located on the East line Block 17, Vermilion Area, Revised having Coordinates of X = 1,647,382.17 and Y = 315,768.70; thence South 1,438.15 feet along the East line of said Block 17 to a Northeast corner of State Lease No. 17156 having Coordinates of X = 1,647,382.17 and Y = 314,330.55; thence along the Northerly and Easterly boundary of said State Lease No. 17156 the following courses and distances: South 42 degrees 30 minutes 38 seconds West 380.57 feet to a corner having Coordinates of X = 1,647,125.00 and Y = 314,050.10, South 79 degrees 05 minutes 20 seconds West 2,113.20 feet to a corner having Coordinates of X = 1,645,050.00 and Y = 313,650.01, North 34 degrees 49 minutes 28 seconds East 1,400.90 feet to a corner having Coordinates of X = 1,645,850.01 and Y = 314,800.01, North 39 degrees 48 minutes 20 seconds East 1,171.54 feet to a corner having Coordinates of X = 1,646,600.01 and Y = 315,700.01 and North 42 degrees 42 minutes 34 seconds East 105.68 feet to a Northeast corner located on the South boundary of said State Lease No. 19970 having Coordinates of X = 1,646,671.69 and Y = 315,777.66; thence South 89 degrees 16 minutes 38 seconds East 710.54 feet along the South boundary of said State Lease No. 19970 to the point of beginning, containing approximately **63.46 acres**, all as more particularly outlined on a plat on file in the Office of Mineral Resources, Department of Natural Resources. All bearings, distances and coordinates are based on Louisiana Coordinate System of 1927, (North or South Zone).

NOTE: The above description of the Tract nominated for lease has been provided and corrected, where required, exclusively by the nomination party. Any mineral lease selected from this Tract and awarded by the Louisiana State Mineral Board shall be without warranty of any kind, either express, implied, or statutory, including, but not limited to, the implied warranties of merchantability and fitness for a particular purpose. Should the mineral lease awarded by the Louisiana State Mineral Board be subsequently modified, cancelled or abrogated due to the existence of conflicting leases, operating agreements, private claims or other future obligations or conditions which may affect all or any portion of the leased Tract, it shall not relieve the Lessee of the obligation to pay any bonus due thereon to the Louisiana State Mineral Board, nor shall the Louisiana State Mineral Board be obligated to refund any consideration paid by the Lessor prior to such modification, cancellation, or abrogation, including, but not limited to, bonuses, rentals and royalties.

NOTE: The State of Louisiana does hereby reserve, and this lease shall be subject to, the imprescriptible right of surface use in the nature of a servitude in favor of the Department of Natural Resources, including its Offices and Commissions, for the sole purpose of implementing, constructing, servicing and maintaining approved coastal zone management and/or restoration projects. Utilization of any and all rights derived under this lease by the mineral lessee, its agents, successors or assigns, shall not interfere with nor hinder the reasonable surface use by the Department of Natural Resources, its Offices or Commissions, as herein above reserved.

Applicant: THEOPHILUS OIL, GAS & LAND SERVICES, LLC

Bidder	Cash Payment	Price/Acre	Rental	Oil	Gas	Other

**Legend**

- 10010034
- Blocks
- Active\_Leases

