

TRACT 41268 - Portion of Block 16, Vermilion Area, Revised, Vermilion Parish, Louisiana

The beds and bottoms of all water bodies belonging to the State of Louisiana located in Block 16, Vermilion Area, Revised, together with any present lands formed by accretion to the shoreline or islands formed therein, located in Vermilion Parish, Louisiana, owned by and not presently under mineral lease as of January 13, 2010, from the State of Louisiana, the geographical area of which is more fully described as follows: Beginning at the Southwest corner of State Lease No. 3763, as amended, located on the West line of Block 16, Vermilion Area, Revised having Coordinates of X = 1,647,382.17 and Y = 314,330.55; thence along the Southern boundary of said State Lease No. 3763 the following courses and distances: South 48 degrees 32 minutes 54 seconds East 1,771.53 feet to a corner having Coordinates of X = 1,648,709.96 and Y = 313,157.82, South 48 degrees 50 minutes 00 seconds East 1,031.90 feet to a corner having Coordinates of X = 1,649,486.77 and Y = 312,478.57, East 2,231.22 feet to a corner having Coordinates of X = 1,651,717.99 and Y = 312,478.57, South 08 degrees 54 minutes 37 seconds East 36.35 feet to a corner having Coordinates of X = 1,651,723.62 and Y = 312,442.66, South 13 degrees 52 minutes 58 seconds East 166.50 feet to a corner having Coordinates of X = 1,651,763.57 and Y = 312,281.02, South 21 degrees 50 minutes 10 seconds East 246.22 feet to a corner having Coordinates of X = 1,651,855.15 and Y = 312,052.47, North 86 degrees 37 minutes 06 seconds East 660.49 feet to a corner having Coordinates of X = 1,652,514.49 and Y = 312,091.43, North 83 degrees 44 minutes 53 seconds East 502.58 feet to a corner having Coordinates of X = 1,653,014.08 and Y = 312,146.16, North 79 degrees 37 minutes 41 seconds East 246.34 feet to a corner having Coordinates of X = 1,653,256.39 and Y = 312,190.51, North 75 degrees 35 minutes 37 seconds East 500.25 feet to a corner having Coordinates of X = 1,653,740.91 and Y = 312,314.97, North 71 degrees 34 minutes 06 seconds East 286.52 feet to a corner having Coordinates of X = 1,654,012.73 and Y = 312,405.56, North 66 degrees 39 minutes 07 seconds East 787.41 feet to a corner having Coordinates of X = 1,654,735.66 and Y = 312,717.62 and North 56 degrees 25 minutes 23 seconds East 1,942.45 feet to a point having Coordinates of X = 1,656,354.00 and Y = 313,791.90; thence South 1,809.66 feet to the Northeast corner of State Lease No. 17159, as amended having Coordinates of X = 1,656,354.00 and Y = 311,982.24; thence along the North and Northwest boundary of said State Lease No. 17159 the following courses and distances: West 8,242.65 feet to a corner having Coordinates of X = 1,648,111.35 and Y = 311,982.24 and South 18 degrees 10 minutes 12 seconds West 2,338.34 to a corner located on the West line of said Block 16 having Coordinates of X = 1,647,382.17 and Y = 309,760.50; thence North 4,570.05 feet along the West line of said Block 16 to the point of beginning, containing approximately **179.65 acres**, all as more particularly outlined on a plat on file in the Office of Mineral Resources, Department of Natural Resources. All bearings, distances and coordinates are based on Louisiana Coordinate System of 1927, (North or South Zone).

NOTE: The above description of the Tract nominated for lease has been provided and corrected, where required, exclusively by the nomination party. Any mineral lease selected from this Tract and awarded by the Louisiana State Mineral Board shall be without warranty of any kind, either express, implied, or statutory, including, but not limited to, the implied warranties of merchantability and fitness for a particular purpose. Should the mineral lease awarded by the Louisiana State Mineral Board be subsequently modified, cancelled or abrogated due to the existence of conflicting leases, operating agreements, private claims or other future obligations or conditions which may affect all or any portion of the leased Tract, it shall not relieve the Lessee of the obligation to pay any bonus due thereon to the Louisiana State Mineral Board, nor shall the Louisiana State Mineral Board be obligated to refund any consideration paid by the Lessor prior to such modification, cancellation, or abrogation, including, but not limited to, bonuses, rentals and royalties.

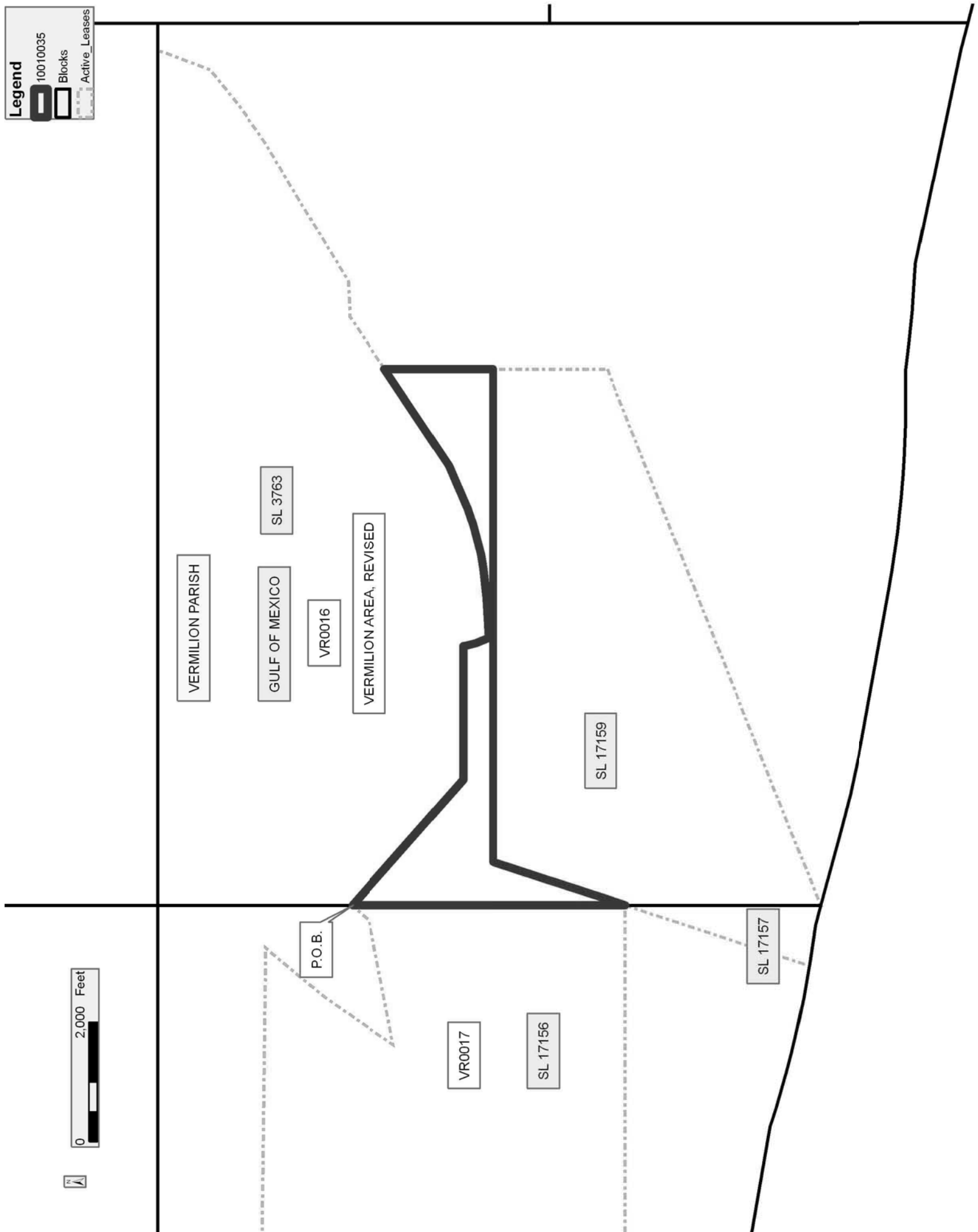
NOTE: The State of Louisiana does hereby reserve, and this lease shall be subject to, the imprescriptible right of surface use in the nature of a servitude in favor of the Department of Natural Resources, including its Offices and Commissions, for the sole purpose of implementing, constructing, servicing and maintaining approved coastal zone management and/or restoration projects. Utilization of any and all rights derived under this lease by the mineral lessee, its agents, successors or assigns, shall not interfere with nor hinder the reasonable surface use by the Department of Natural Resources, its Offices or Commissions, as herein above reserved.

Applicant: THEOPHILUS OIL, GAS & LAND SERVICES, LLC

Bidder	Cash Payment	Price/Acre	Rental	Oil	Gas	Other

Legend

- 10010035
- Blocks
- Active_Leases



TRACT 41269 - Portion of Block 14, Vermilion Area, Revised, Vermilion Parish, Louisiana

The beds and bottoms of all water bodies belonging to the State of Louisiana located in Block 14, Vermilion Area, Revised, together with any present lands formed by accretion to the shoreline or islands formed therein, located in Vermilion Parish, Louisiana, owned by and not presently under mineral lease as of January 13, 2010, from the State of Louisiana, the geographical area of which is more fully described as follows: Beginning at the Northeast corner of Block 14, Vermilion Area, Revised, having Coordinates of X = 1,691,656.32 and Y = 311,024.77; thence South 5,449.65 feet to the boundary of State Lease No. 861, amended; thence North 45 degrees 09 minutes 47 seconds West 7,729.00 feet to the boundary of said State Lease No. 861 to the North line of said Block 1; thence East 5,480.77 feet to the point of beginning, containing approximately **342.84 acres**, all as more particularly outlined on a plat on file in the Office of Mineral Resources, Department of Natural Resources. All bearings, distances and coordinates are based on Louisiana Coordinate System of 1927, (North or South Zone).

NOTE: The above description of the Tract nominated for lease has been provided and corrected, where required, exclusively by the nomination party. Any mineral lease selected from this Tract and awarded by the Louisiana State Mineral Board shall be without warranty of any kind, either express, implied, or statutory, including, but not limited to, the implied warranties of merchantability and fitness for a particular purpose. Should the mineral lease awarded by the Louisiana State Mineral Board be subsequently modified, cancelled or abrogated due to the existence of conflicting leases, operating agreements, private claims or other future obligations or conditions which may affect all or any portion of the leased Tract, it shall not relieve the Lessee of the obligation to pay any bonus due thereon to the Louisiana State Mineral Board, nor shall the Louisiana State Mineral Board be obligated to refund any consideration paid by the Lessor prior to such modification, cancellation, or abrogation, including, but not limited to, bonuses, rentals and royalties.

NOTE: The State of Louisiana does hereby reserve, and this lease shall be subject to, the imprescriptible right of surface use in the nature of a servitude in favor of the Department of Natural Resources, including its Offices and Commissions, for the sole purpose of implementing, constructing, servicing and maintaining approved coastal zone management and/or restoration projects. Utilization of any and all rights derived under this lease by the mineral lessee, its agents, successors or assigns, shall not interfere with nor hinder the reasonable surface use by the Department of Natural Resources, its Offices or Commissions, as herein above reserved.


NOTE: The Department of Wildlife and Fisheries has designated certain areas in the coastal waters of the State of Louisiana as Oyster Seed Bed Areas. The exact location of those Seed Bed Areas must be obtained from

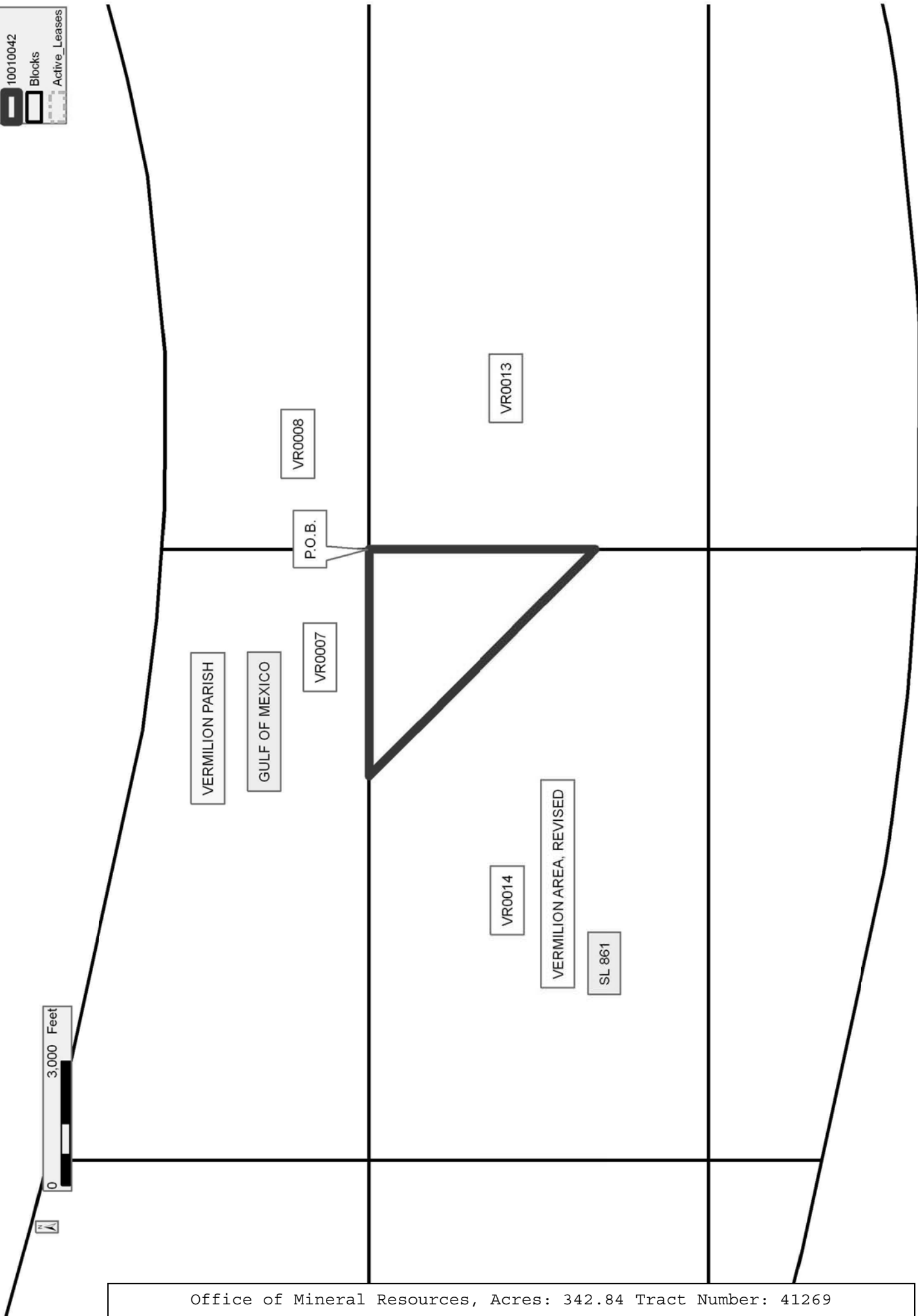
the Department of Wildlife and Fisheries and any work done under a mineral lease from the State of Louisiana may necessarily be conducted in conformity with the rules and regulations promulgated by the said Department of Wildlife and Fisheries for Oyster Seed Bed Areas.

Applicant: THEOPHILUS OIL, GAS & LAND SERVICES, LLC

Bidder	Cash Payment	Price/Acre	Rental	Oil	Gas	Other

Legend

-  10010042
-  Blocks
-  Active_Leases



TRACT 41270 - Portion of Block 15, Vermilion Area, Revised, Vermilion Parish, Louisiana

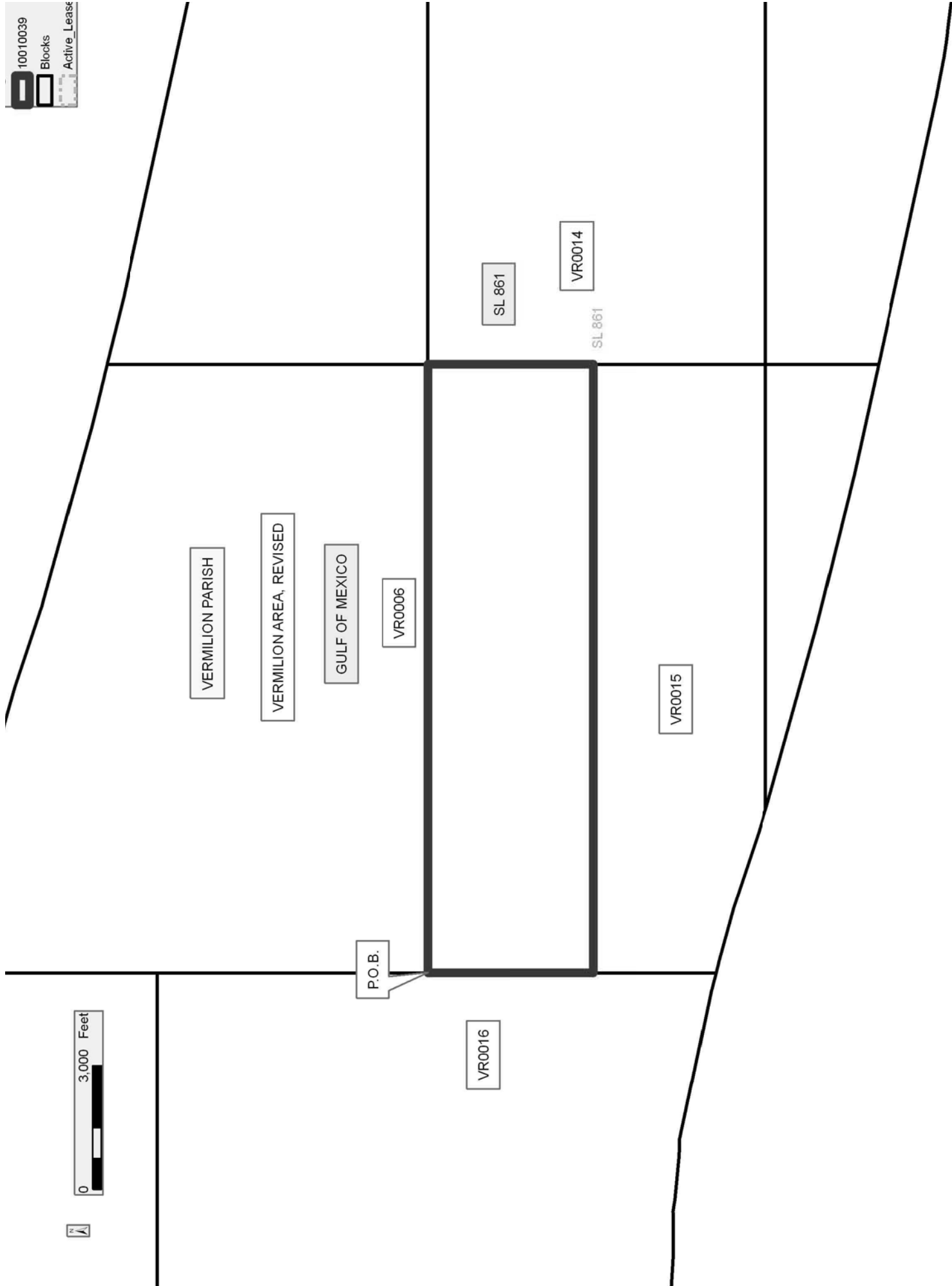
The beds and bottoms of all water bodies belonging to the State of Louisiana located in Block 15, Vermilion Area, Revised, together with any present lands formed by accretion to the shoreline or islands formed therein, located in Vermilion Parish, Louisiana, owned by and not presently under mineral lease as of January 13, 2010, from the State of Louisiana, the geographical area of which is more fully described as follows: Beginning at the Northwest corner of Block 15, Vermilion Area, Revised having Coordinates of X = 1,662,140.22 and Y = 311,024.77; thence East 14,758.05 feet along the North line of said Block 15 to its Northeast corner having Coordinates of X = 1,676,898.27 and Y = 311,024.77; thence South 4,000.00 feet along the East line of said Block 15 to a point having Coordinates of X = 1,676,898.27 and Y = 307,024.77; thence West 14,758.05 feet to a point on the West line of said Block 15 having Coordinates of X = 1,662,140.22 and Y = 307,024.77; thence North 4,000.00 feet along the West line of said Block 15 to the point of beginning, containing approximately **1,355.19 acres**, all as more particularly outlined on a plat on file in the Office of Mineral Resources, Department of Natural Resources. All bearings, distances and coordinates are based on Louisiana Coordinate System of 1927, (North or South Zone).

NOTE: The above description of the Tract nominated for lease has been provided and corrected, where required, exclusively by the nomination party. Any mineral lease selected from this Tract and awarded by the Louisiana State Mineral Board shall be without warranty of any kind, either express, implied, or statutory, including, but not limited to, the implied warranties of merchantability and fitness for a particular purpose. Should the mineral lease awarded by the Louisiana State Mineral Board be subsequently modified, cancelled or abrogated due to the existence of conflicting leases, operating agreements, private claims or other future obligations or conditions which may affect all or any portion of the leased Tract, it shall not relieve the Lessee of the obligation to pay any bonus due thereon to the Louisiana State Mineral Board, nor shall the Louisiana State Mineral Board be obligated to refund any consideration paid by the Lessor prior to such modification, cancellation, or abrogation, including, but not limited to, bonuses, rentals and royalties.

NOTE: The State of Louisiana does hereby reserve, and this lease shall be subject to, the imprescriptible right of surface use in the nature of a servitude in favor of the Department of Natural Resources, including its Offices and Commissions, for the sole purpose of implementing, constructing, servicing and maintaining approved coastal zone management and/or restoration projects. Utilization of any and all rights derived under this lease by the mineral lessee, its agents, successors or assigns, shall not interfere with nor hinder the reasonable surface use by the Department of Natural Resources, its Offices or Commissions, as herein above reserved.

Applicant: THEOPHILUS OIL, GAS & LAND SERVICES, LLC

Bidder	Cash Payment	Price/Acre	Rental	Oil	Gas	Other



TRACT 41271 - Portion of Block 17, Vermilion Area, Revised, Vermilion Parish, Louisiana

The beds and bottoms of all water bodies belonging to the State of Louisiana located in Block 17, Vermilion Area, Revised, together with any present lands formed by accretion to the shoreline or islands formed therein, located in Vermilion Parish, Louisiana, owned by and not presently under mineral lease as of January 13, 2010, from the State of Louisiana, the geographical area of which is more fully described as follows: Beginning at the Southwest corner of State lease No. 17156 located on the West line of Block 17, Vermilion Area, Revised having Coordinates of X = 1,632,624.12 and Y = 310,950.01; thence along the South boundary of said State Lease No. 17156 the following courses and distances: East 7,200.00 feet to a corner having Coordinates of X = 1,639,824.12 and Y = 310,950.01, South 1,189.51 feet to a corner having Coordinates of X = 1,639,824.12 and Y = 309,760.50 and East 7,558.05 feet to its Southeast corner located on the East line of said Block 17, also being the North corner of State Lease No. 17157, as amended having Coordinates of X = 1,647,382.17 and Y = 309,760.50; thence South 18 degrees 10 minutes 12 seconds West 3,240.45 feet along the West boundary of said State Lease No. 17157 to its Southwest corner on the Three Mile Line, as decreed by the Supreme Court of the United States, as determined by a Special Master appointed therein, in litigation styled *United States v. State of Louisiana et al No. 9 Original*, in 1975, having Coordinates of X = 1,646,371.68 and Y = 306,681.63; thence along the said Three Mile Line the following courses: Northwesterly along an arc having a radius of 18,240.60 feet and a center located at X = 1,649,308 and Y = 324,684 to a point having Coordinates of X = 1,643,681 and Y = 307,333, Northwesterly on a straight line to a point having Coordinates of X = 1,636,292 and Y = 308,607 and Northwesterly on a straight line to a point on the West line of said Block 17 having Coordinates of X = 1,632,624.12 and Y = 309,087.41; thence North 1,862.60 feet along the West line of said Block 17 to the point of beginning, containing approximately **785.24 acres, LESS AND EXCEPT** that portion thereof, if any, lying seaward of the line three nautical miles from the coast line of Louisiana, as said three mile line has been decreed by the Supreme Court of the United States, as determined by a Special Master appointed therein, in litigation styled **United States v. State of Louisiana et al No. 9 Original**, in 1975, all as more particularly outlined on a plat in the Office of Mineral Resources, Department of Natural Resources. All bearings, distances and coordinates are based on the Louisiana Coordinate System of 1927, (South Zone).

NOTE: The above description of the Tract nominated for lease has been provided and corrected, where required, exclusively by the nomination party. Any mineral lease selected from this Tract and awarded by the Louisiana State Mineral Board shall be without warranty of any kind, either express, implied, or statutory, including, but not limited to, the implied warranties of merchantability and fitness for a particular purpose. Should the mineral lease awarded by the Louisiana State Mineral Board be subsequently modified, cancelled or abrogated due to the

existence of conflicting leases, operating agreements, private claims or other future obligations or conditions which may affect all or any portion of the leased Tract, it shall not relieve the Lessee of the obligation to pay any bonus due thereon to the Louisiana State Mineral Board, nor shall the Louisiana State Mineral Board be obligated to refund any consideration paid by the Lessor prior to such modification, cancellation, or abrogation, including, but not limited to, bonuses, rentals and royalties.

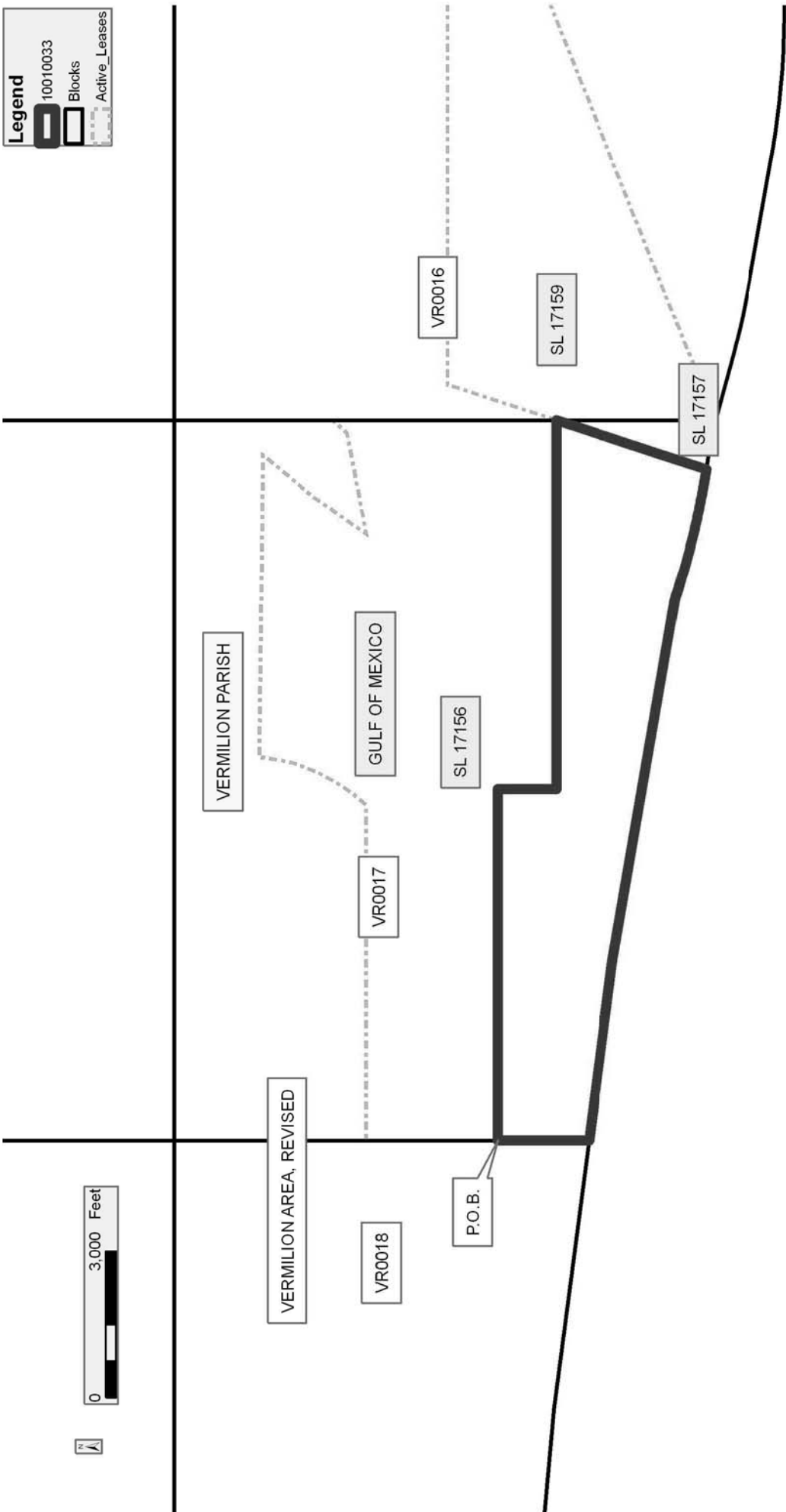
NOTE: The State of Louisiana does hereby reserve, and this lease shall be subject to, the imprescriptible right of surface use in the nature of a servitude in favor of the Department of Natural Resources, including its Offices and Commissions, for the sole purpose of implementing, constructing, servicing and maintaining approved coastal zone management and/or restoration projects. Utilization of any and all rights derived under this lease by the mineral lessee, its agents, successors or assigns, shall not interfere with nor hinder the reasonable surface use by the Department of Natural Resources, its Offices or Commissions, as herein above reserved.

Applicant: THEOPHILUS OIL, GAS & LAND SERVICES, LLC

Bidder	Cash Payment	Price/Acre	Rental	Oil	Gas	Other

Legend

- 10010033
- Blocks
- Active_Leases



TRACT 41272 - Portion of Block 15, Vermilion Area, Revised, Vermilion Parish, Louisiana

The beds and bottoms of all water bodies belonging to the State of Louisiana located in Block 15, Vermilion Area, Revised, together with any present lands formed by accretion to the shoreline or islands formed therein, located in Vermilion Parish, Louisiana, owned by and not presently under mineral lease as of January 13, 2010, from the State of Louisiana, the geographical area of which is more fully described as follows: Beginning at a point on the West line of Block 15, Vermilion Area, Revised having Coordinates of X = 1,662,140.22 and Y = 307,024.77; thence East 14,758.05 feet to a point on the East line of said Block 15 having Coordinates of X = 1,676,898.27 and Y = 307,024.77; thence South 2,150.00 feet along the East line of said Block 15 to the Northeast corner of State Lease No. 862, as amended, having Coordinates of X = 1,676,898.27 and Y = 304,874.77; thence along the North and West boundary of said State Lease No. 862 the following courses and distances: West 3,689.51 feet to a corner having Coordinates of X = 1,673,208.76 and Y = 304,874.77 and South 2,050.00 feet to its Southwest corner located on the South line of said Block 15 having Coordinates of X = 1,673,208.76 and Y = 302,824.77; thence West 7,086.81 feet along the South line of said Block 15 to a point on the Three Mile Line, as decreed by the Supreme Court of the United States, as determined by a Special Master appointed therein, in litigation styled *United States v. State of Louisiana et al No. 9 Original*, in 1975, having Coordinates of X = 1,666,121.95 and Y = 302,824.77; thence along the said Three Mile Line the following courses and distances: Northwesterly on an arc having a radius of 18,240.60 feet and a center at X = 1,671,018 and Y = 320,396 to a point having Coordinates of X = 1,665,216 and Y = 303,103, Northwesterly on a straight line to a point having Coordinates of X = 1,663,698 and Y = 303,612, Northwesterly on a straight line to a point having Coordinates of X = 1,662,427 and Y = 303,960 and Northwesterly on a straight line to a point on the West line of said Block 15 having Coordinates of X = 1,662,140.22 and Y = 304,033.13; thence North 2,991.64 feet along the West line of said Block 15 to the point of beginning, containing approximately **1,192.19 acres, LESS AND EXCEPT** that portion thereof, if any, lying seaward of the line three nautical miles from the coast line of Louisiana, as said three mile line has been decreed by the Supreme Court of the United States, as determined by a Special Master appointed therein, in litigation styled **United States v. State of Louisiana et al No. 9 Original**, in 1975, all as more particularly outlined on a plat in the Office of Mineral Resources, Department of Natural Resources. All bearings, distances and coordinates are based on the Louisiana Coordinate System of 1927, (South Zone).

NOTE: The above description of the Tract nominated for lease has been provided and corrected, where required, exclusively by the nomination party. Any mineral lease selected from this Tract and awarded by the Louisiana State Mineral Board shall be without warranty of any kind, either express, implied, or statutory, including, but not limited to, the implied warranties of merchantability and fitness for a particular

purpose. Should the mineral lease awarded by the Louisiana State Mineral Board be subsequently modified, cancelled or abrogated due to the existence of conflicting leases, operating agreements, private claims or other future obligations or conditions which may affect all or any portion of the leased Tract, it shall not relieve the Lessee of the obligation to pay any bonus due thereon to the Louisiana State Mineral Board, nor shall the Louisiana State Mineral Board be obligated to refund any consideration paid by the Lessor prior to such modification, cancellation, or abrogation, including, but not limited to, bonuses, rentals and royalties.

NOTE: The State of Louisiana does hereby reserve, and this lease shall be subject to, the imprescriptible right of surface use in the nature of a servitude in favor of the Department of Natural Resources, including its Offices and Commissions, for the sole purpose of implementing, constructing, servicing and maintaining approved coastal zone management and/or restoration projects. Utilization of any and all rights derived under this lease by the mineral lessee, its agents, successors or assigns, shall not interfere with nor hinder the reasonable surface use by the Department of Natural Resources, its Offices or Commissions, as herein above reserved.

Applicant: THEOPHILUS OIL, GAS & LAND SERVICES, LLC

Bidder	Cash Payment	Price/Acre	Rental	Oil	Gas	Other

