

TRACT 41273 - Bienville Parish, Louisiana

All of the lands now or formerly constituting the beds and bottoms of all water bodies of every nature and description the title of which vests in the State of Louisiana, together with all islands arising therein and other lands formed by accretion or by reliction, where allowed by law, excepting tax adjudicated lands, and not presently under mineral lease on January 13, 2010, situated in Bienville Parish, Louisiana, and more particularly described as follows: Beginning at a point having Coordinates of X = 1,730,700.00 and Y = 619,200.00; thence West 5,600.00 feet to a point having Coordinates of X = 1,725,100.00 and Y = 619,200.00; thence North 5,200.00 feet to a point having Coordinates of X = 1,725,100.00 and Y = 624,400.00; thence East 5,600.00 feet to a point having Coordinates of X = 1,730,700.00 and Y = 624,400.00; thence South 5,200.00 feet to the point of beginning, including all lands lying below the elevation of 148.6 feet as established in a boundary agreement dated April 16, 1955, **LESS AND EXCEPT** that portion of the nomination from the surface to 5,530 feet located within the geographical boundary of the Underground Storage Lease No. 470, being the Bistineau Gas Storage Pool in the Sligo Formation also known as the Pettit Formation; containing approximately **24 acres**, all as more particularly outlined on a plat on file in the Office of Mineral Resources, Department of Natural Resources. All bearings, distances and coordinates are based on Louisiana Coordinate System of 1927, (North or South Zone), where applicable.

NOTE: The above description of the Tract nominated for lease has been provided and corrected, where required, exclusively by the nomination party. Any mineral lease selected from this Tract and awarded by the Louisiana State Mineral Board shall be without warranty of any kind, either express, implied, or statutory, including, but not limited to, the implied warranties of merchantability and fitness for a particular purpose. Should the mineral lease awarded by the Louisiana State Mineral Board be subsequently modified, cancelled or abrogated due to the existence of conflicting leases, operating agreements, private claims or other future obligations or conditions which may affect all or any portion of the leased Tract, it shall not relieve the Lessee of the obligation to pay any bonus due thereon to the Louisiana State Mineral Board, nor shall the Louisiana State Mineral Board be obligated to refund any consideration paid by the Lessor prior to such modification, cancellation, or abrogation, including, but not limited to, bonuses, rentals and royalties.

NOTE: This tract encompasses an area beneath which is located on the Bistineau Gas Storage Pool in the Sligo formation of the Pettit Porosity. Accordingly, any mineral related activity, including, but not limited to, the exploration and drilling for, and the production and storage of oil, gas and other liquid or gaseous minerals, conducted under a valid mineral lease which may be obtained from the State, shall be subject to any statewide orders issued by the Louisiana Office of Conservation pertinent to conducting such operations in this area and upon this tract, including particularly, but not limited to, the following: Order Nos 287, 287-A, 287-A-I, 287-B, Supplement to 287-B, 287-B-1, 287-B-2 and 287-B-3. The

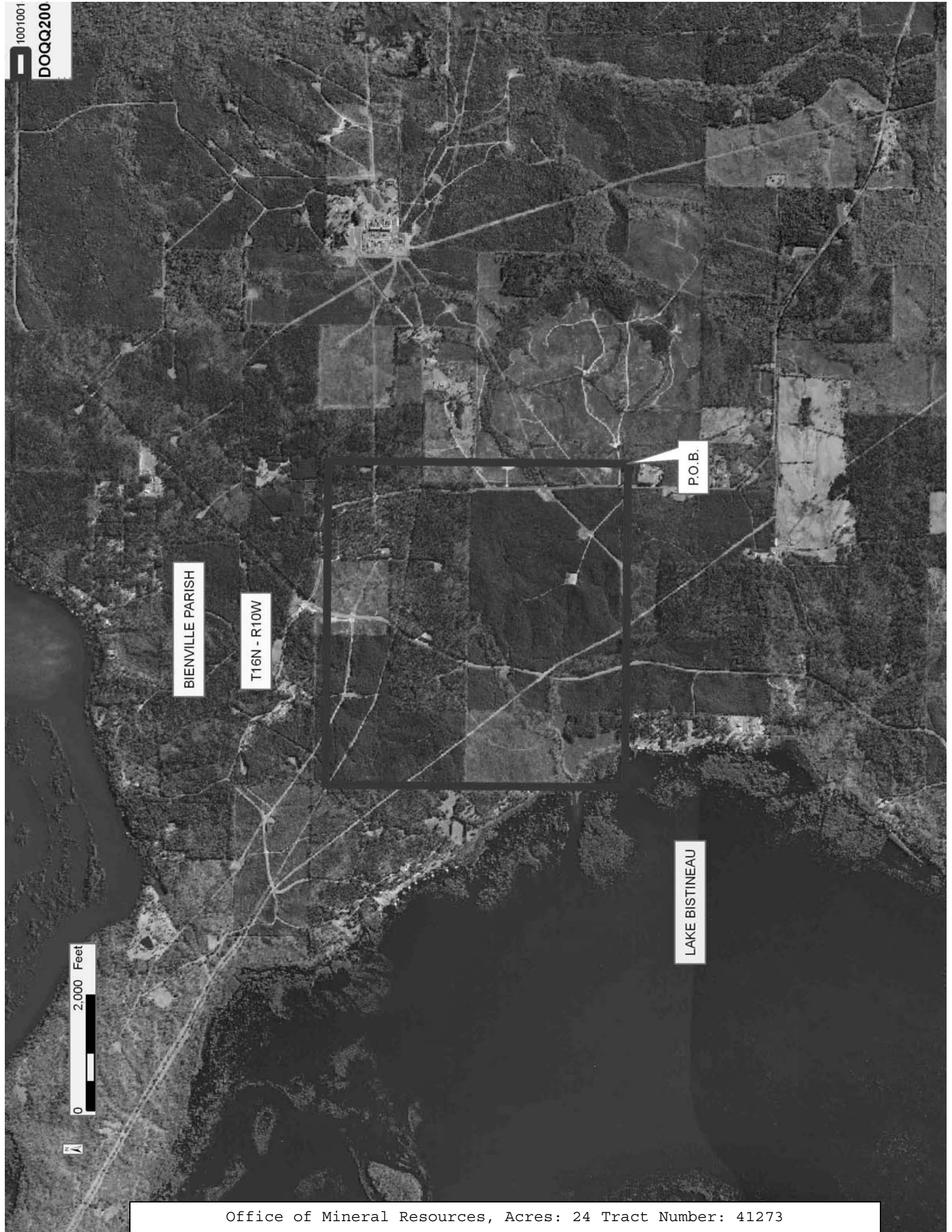
successful bidder on this tract shall contact the operator of the Bistineau Gas Storage Pool and the Office of Conservation prior to initiating and conducting any of the aforementioned activity hereon.

NOTE: Please be advised that the United States Government is claiming that all lands formed by reliction as a result of the removal of a "Great Raft" from the mouth of Lake Bistineau during the mid-nineteenth century are governed by federal common law. For that reason, the United States Government claims ownership to the mineral rights to the entirety of the bed of Lake Bistineau below the lake's 1812 high water marks and to all lands above the current high water mark of Lake Bistineau. Therefore, the "Successful Bidder/Lessee" is advised that they may be made a party to litigation or that they may have to seek Declaratory relief to quiet title against the United States if a State Lease is granted.

NOTE: Furthermore, be aware that the Lessor does not warrant title and hereby disclaims any covenant of quiet title or peaceful possession of the leased property. The State Lease will be issued without any warranty of title and without any recourse against Lessor whatsoever, either expressed or implied. The "Successful Bidder/Lessee" is warned that the Lessor shall not be required to return any payments received pursuant to the terms of the State Lease or be otherwise responsible to Lessee therefore.

Applicant: CLASSIC PETROLEUM, INC.

Bidder	Cash Payment	Price/Acre	Rental	Oil	Gas	Other



BIENVILLE PARISH

T16N - R10W

LAKE BISTINEAU

P.O.B.

0 2,000 Feet



TRACT 41274 - St. Landry Parish, Louisiana

All of the lands now or formerly constituting the beds and bottoms of all water bodies of every nature and description the title of which vests in the State of Louisiana, together with all islands arising therein and other lands formed by accretion or by reliction, where allowed by law, excepting tax adjudicated lands, and not presently under mineral lease on January 13, 2010, situated in St. Landry Parish, Louisiana, and more particularly described as follows: Beginning at a point having Coordinates of X = 1,825,210.55 and Y = 681,546.36; thence East approximately 7,815 feet to a point of intersection with the Western boundary of Section 16, Township 6 South, Range 6 East having a Coordinate of Y = 681,546.36; thence along the Western and Southern boundary of said Section 16, the following courses: Southwesterly approximately 5,234 feet and Easterly approximately 3,328 feet to a point of intersection with the Western boundary of State Lease No. 18985 having a Coordinate of X = 1,835,600.00; thence South approximately 5,389 feet along the Western boundary of said State Lease No. 18985 to a point having Coordinates of X = 1,835,600.00 and Y = 670,984.67; thence West 10,389.45 feet to a point having Coordinates of X = 1,825,210.55 and Y = 670,984.67; thence North 10,561.69 feet to the point of beginning, **LESS AND EXCEPT** any portion of Section 16, Township 6 South, Range 6 East that may be included in the above mentioned tract, containing approximately **22 acres**, all as more particularly outlined on a plat on file in the Office of Mineral Resources, Department of Natural Resources. All bearings, distances and coordinates are based on Louisiana Coordinate System of 1927, (North or South Zone), where applicable.

NOTE: The above description of the Tract nominated for lease has been provided and corrected, where required, exclusively by the nomination party. Any mineral lease selected from this Tract and awarded by the Louisiana State Mineral Board shall be without warranty of any kind, either express, implied, or statutory, including, but not limited to, the implied warranties of merchantability and fitness for a particular purpose. Should the mineral lease awarded by the Louisiana State Mineral Board be subsequently modified, cancelled or abrogated due to the existence of conflicting leases, operating agreements, private claims or other future obligations or conditions which may affect all or any portion of the leased Tract, it shall not relieve the Lessee of the obligation to pay any bonus due thereon to the Louisiana State Mineral Board, nor shall the Louisiana State Mineral Board be obligated to refund any consideration paid by the Lessor prior to such modification, cancellation, or abrogation, including, but not limited to, bonuses, rentals and royalties.

NOTE: This tract includes Commissioner's unit SP RC SUA established under Order No. 116-P-2. The Union Gas - Stanford No. 1, Section 39, Township 6 South, Range 6 East, tested 821 BOPD.

NOTE: The Office of Mineral Resources will require a minimum royalty of 25%.

Applicant: STAFF OFFICE OF MINERAL RESOURCES

Bidder	Cash Payment	Price/Acre	Rental	Oil	Gas	Other

Legend
10010002
Active_Leases
DOQQ2004

0 3,000 Feet



ST LANDRY PARISH

T6S - R6E

BAYOU COURTABLEU

P.O.B.

T6S - R5E

SL 18985

BAYOU GERIMOND

TRACT 41275 - Cameron Parish, Louisiana

All of the lands now or formerly constituting the beds and bottoms of all water bodies of every nature and description the title of which vests in the State of Louisiana, together with all islands arising therein and other lands formed by accretion or by reliction, where allowed by law, excepting tax adjudicated lands, and not presently under mineral lease on January 13, 2010, situated in Cameron Parish, Louisiana, and more particularly described as follows: Beginning at a point having Coordinates of X = 1,225,527.59 and Y = 485,511.52; thence East 7,984.62 feet to a point having Coordinates of X = 1,233,512.21 and Y = 485,511.52; thence South 12,661.52 feet to a point having Coordinates of X = 1,233,512.21 and Y = 472,850.00; thence West 7,984.62 feet to a point having Coordinates of X = 1,225,527.59 and Y = 472,850.00; thence North 12,661.52 feet to the Point of Beginning, containing approximately **1,875 acres**, all as more particularly outlined on a plat on file in the Office of Mineral Resources, Department of Natural Resources. All bearings, distances and coordinates are based on Louisiana Coordinate System of 1927, (North or South Zone), where applicable.

NOTE: The above description of the Tract nominated for lease has been provided and corrected, where required, exclusively by the nomination party. Any mineral lease selected from this Tract and awarded by the Louisiana State Mineral Board shall be without warranty of any kind, either express, implied, or statutory, including, but not limited to, the implied warranties of merchantability and fitness for a particular purpose. Should the mineral lease awarded by the Louisiana State Mineral Board be subsequently modified, cancelled or abrogated due to the existence of conflicting leases, operating agreements, private claims or other future obligations or conditions which may affect all or any portion of the leased Tract, it shall not relieve the Lessee of the obligation to pay any bonus due thereon to the Louisiana State Mineral Board, nor shall the Louisiana State Mineral Board be obligated to refund any consideration paid by the Lessor prior to such modification, cancellation, or abrogation, including, but not limited to, bonuses, rentals and royalties.

NOTE: The State of Louisiana does hereby reserve, and this lease shall be subject to, the imprescriptible right of surface use in the nature of a servitude in favor of the Department of Natural Resources, including its Offices and Commissions, for the sole purpose of implementing, constructing, servicing and maintaining approved coastal zone management and/or restoration projects. Utilization of any and all rights derived under this lease by the mineral lessee, its agents, successors or assigns, shall not interfere with nor hinder the reasonable surface use by the Department of Natural Resources, its Offices or Commissions, as herein above reserved.

NOTE: The Department of Wildlife and Fisheries has designated certain areas in the coastal waters of the State of Louisiana as Oyster Seed Bed Areas. The exact location of those Seed Bed Areas must be obtained from

the Department of Wildlife and Fisheries and any work done under a mineral lease from the State of Louisiana may necessarily be conducted in conformity with the rules and regulations promulgated by the said Department of Wildlife and Fisheries for Oyster Seed Bed Areas.

Applicant: JEFF CHATELAIN

Bidder	Cash Payment	Price/Acre	Rental	Oil	Gas	Other

Legend
10010003
DOQQ2004

CAMERON PARISH

T13S - R14W

P.O.B.

SABINE LAKE

0 3,000 Feet



Legend
10010003
DOQQ2004

CAMERON PARISH

T13S - R14W

P.O.B.

SABINE LAKE

0 3,000 Feet



TRACT 41276 - Cameron Parish, Louisiana

All of the lands now or formerly constituting the beds and bottoms of all water bodies of every nature and description the title of which vests in the State of Louisiana, together with all islands arising therein and other lands formed by accretion or by reliction, where allowed by law, excepting tax adjudicated lands, and not presently under mineral lease on January 13, 2010, situated in Cameron Parish, Louisiana, and more particularly described as follows: Beginning at a point having Coordinates of X = 1,576,211.00 and Y = 460,531.00; thence East 9,412.00 feet to a point having Coordinates of X = 1,585,623.00 and Y = 460,531.00; thence South 8,647.00 feet to the Northeast corner of State Lease No. 19354 having Coordinates of X = 1,585,623.00 and Y = 451,884.00; thence along the boundary of said State Lease No. 19354 the following courses: West 3,666.00 feet; North 1,596.00 feet; West 4,126.00 feet; North 1,000.00 feet and West 1,620.00 feet to its Northwest corner having Coordinates of X = 1,576,211.00 and Y = 454,480.00; thence North 6,051.00 feet to the point of beginning, **LESS AND EXCEPT** all of State Lease No. 18506, as amended, that lies within the above described tract, more particularly described as follows: Commencing at the point of beginning of the above described tract having Coordinates of X = 1,576,211.00 and Y = 460,531.00; thence South 21 degrees 46 minutes 09 seconds East 4,368.12 feet to the Northwest corner of State Lease No. 18506, as amended, having Coordinates of X = 1,577,831.00 and Y = 456,474.39; thence along the boundary of said State Lease No. 18506 the following courses: Northeasterly along an arc to the left having a radius of 4,108.03 feet and a center at X = 1,576,710.94 and Y = 460,426.77 to a point having Coordinates of X = 1,578,142.79 and Y = 456,576.36; Northeasterly along an arc to the right having a radius of 1,676.59 feet and a center at X = 1,578,896.78 and Y = 455,078.87 to a point having Coordinates of X = 1,578,707.57 and Y = 456,744.75; Southeasterly along an arc to the right having a radius of 1,521.60 feet and a center at X = 1,578,923.95 and Y = 455,238.62 to a point having Coordinates of X = 1,579,767.25 and Y = 456,505.15; Southeasterly along an arc to the right having a radius of 1,480.88 feet and a center at X = 1,578,926.07 and Y = 455,286.38 to a point having Coordinates of X = 1,580,107.13 and Y = 456,179.73; Southeasterly along an arc to the right having a radius of 651.63 feet and a center at X = 1,579,559.59 and Y = 455,826.42 to a point having Coordinates of X = 1,580,210.67 and Y = 455,799.58; Southwesterly along an arc to the left having a radius of 4,023.62 feet and a center at X = 1,581,918.33 and Y = 452,156.31 to a point having Coordinates of X = 1,579,197.79 and Y = 455,120.80; Southwesterly along an arc to the right having a radius of 878.71 feet and a center at X = 1,578,580.21 and Y = 455,745.88 to a point having Coordinates of X = 1,578,754.36 and Y = 454,884.60; Southwesterly along an arc to the right having a radius of 3,935.75 feet and a center at X = 1,578,318.22 and Y = 458,796.12 to a point having Coordinates of X = 1,578,044.31 and Y = 454,869.90; Northwesterly along an arc to the right having a radius of 10,093.84 feet and a center at X = 1,579,143.42 and Y = 464,903.72 to a point having Coordinates of X = 1,577,831.00 and Y = 454,895.57 and North 1,578.82 feet back to its Northwest corner; The above

described nominated tract containing approximately **931 acres**, all as more particularly outlined on a plat on file in the Office of Mineral Resources, Department of Natural Resources. All bearings, distances and coordinates are based on Louisiana Coordinate System of 1927, (North or South Zone), where applicable.

NOTE: The above description of the Tract nominated for lease has been provided and corrected, where required, exclusively by the nomination party. Any mineral lease selected from this Tract and awarded by the Louisiana State Mineral Board shall be without warranty of any kind, either express, implied, or statutory, including, but not limited to, the implied warranties of merchantability and fitness for a particular purpose. Should the mineral lease awarded by the Louisiana State Mineral Board be subsequently modified, cancelled or abrogated due to the existence of conflicting leases, operating agreements, private claims or other future obligations or conditions which may affect all or any portion of the leased Tract, it shall not relieve the Lessee of the obligation to pay any bonus due thereon to the Louisiana State Mineral Board, nor shall the Louisiana State Mineral Board be obligated to refund any consideration paid by the Lessor prior to such modification, cancellation, or abrogation, including, but not limited to, bonuses, rentals and royalties.

NOTE: The State of Louisiana does hereby reserve, and this lease shall be subject to, the imprescriptible right of surface use in the nature of a servitude in favor of the Department of Natural Resources, including its Offices and Commissions, for the sole purpose of implementing, constructing, servicing and maintaining approved coastal zone management and/or restoration projects. Utilization of any and all rights derived under this lease by the mineral lessee, its agents, successors or assigns, shall not interfere with nor hinder the reasonable surface use by the Department of Natural Resources, its Offices or Commissions, as herein above reserved.

Applicant: OMNI ENERGY, INC.

Bidder	Cash Payment	Price/Acre	Rental	Oil	Gas	Other

Legend

10010012

Active_Leases

DOQQ2004

0 2,000 Feet



CAMERON PARISH

P.O.B.

SL 18506

SL 19354

MALLARD BAY

TRACT 41277 - Jefferson and Lafourche Parishes, Louisiana

All of the lands now or formerly constituting the beds and bottoms of all water bodies of every nature and description the title of which vests in the State of Louisiana, together with all islands arising therein and other lands formed by accretion or by reliction, where allowed by law, excepting tax adjudicated lands, and not presently under mineral lease on January 13, 2010, situated in Jefferson and Lafourche Parishes, Louisiana, and more particularly described as follows: Beginning at a point having Coordinates of X = 2,368,807.00 and Y = 365,399.14; thence East 7,648.95 feet to a point having Coordinates of X = 2,376,455.95 and Y = 365,399.14; thence South 9,774.14 feet to a point having Coordinates of X = 2,376,455.95 and Y = 355,625.00; thence West 3,379.95 feet to the Southeast corner of State Lease No. 18651 having Coordinates of X = 2,373,076.00 and Y = 355,625.00; thence along the boundary of said State Lease No. 18651 the following courses: North 2,100.00 feet to a point having Coordinates of X = 2,373,076.00 and Y = 357,725.00, West 3,526.00 feet to a point having Coordinates of X = 2,369,550.00 and Y = 357,725.00 and South 2,100.00 feet to its Southwest corner having Coordinates of X = 2,369,550.00 and Y = 355,625.00; thence West 743.00 feet to a point on the East boundary of State Lease No. 19863 having Coordinates of X = 2,368,807.00 and Y = 355,625.00; thence North 2,775.00 feet along the East boundary of said State Lease No. 19863 to its Northeast corner having Coordinates of X = 2,368,807.00 and Y = 358,400.00; thence continue North 6,999.14 feet to the Point of Beginning, containing approximately **1,492 acre**, all as more particularly outlined on a plat on file in the Office of Mineral Resources, Department of Natural Resources. All bearings, distances and coordinates are based on Louisiana Coordinate System of 1927, (North or South Zone), where applicable.

NOTE: The above description of the Tract nominated for lease has been provided and corrected, where required, exclusively by the nomination party. Any mineral lease selected from this Tract and awarded by the Louisiana State Mineral Board shall be without warranty of any kind, either express, implied, or statutory, including, but not limited to, the implied warranties of merchantability and fitness for a particular purpose. Should the mineral lease awarded by the Louisiana State Mineral Board be subsequently modified, cancelled or abrogated due to the existence of conflicting leases, operating agreements, private claims or other future obligations or conditions which may affect all or any portion of the leased Tract, it shall not relieve the Lessee of the obligation to pay any bonus due thereon to the Louisiana State Mineral Board, nor shall the Louisiana State Mineral Board be obligated to refund any consideration paid by the Lessor prior to such modification, cancellation, or abrogation, including, but not limited to, bonuses, rentals and royalties.

NOTE: The State of Louisiana does hereby reserve, and this lease shall be subject to, the imprescriptible right of surface use in the nature of a servitude in favor of the Department of Natural Resources, including its Offices and Commissions, for the sole purpose of implementing,

constructing, servicing and maintaining approved coastal zone management and/or restoration projects. Utilization of any and all rights derived under this lease by the mineral lessee, its agents, successors or assigns, shall not interfere with nor hinder the reasonable surface use by the Department of Natural Resources, its Offices or Commissions, as herein above reserved.

Applicant: LESLIE M. COOPER

Bidder	Cash Payment	Price/Acre	Rental	Oil	Gas	Other

Legend

10010023

Active_Leases

Counties

DOQQ2004

0 3,000 Feet



LAFOURCHE PARISH

JEFFERSON PARISH

P.O.B.

BAYOU PEROT

T16S - R23E

T17S - R22E

SL 18651

SL 19863

BAYOU RIGOLETTES

TRACT 41278 - Jefferson and Lafourche Parishes, Louisiana

All of the lands now or formerly constituting the beds and bottoms of all water bodies of every nature and description the title of which vests in the State of Louisiana, together with all islands arising therein and other lands formed by accretion or by reliction, where allowed by law, excepting tax adjudicated lands, and not presently under mineral lease on January 13, 2010, situated in Jefferson and Lafourche Parishes, Louisiana, and more particularly described as follows: Beginning at a point on the East boundary of State Lease No. 19863 having Coordinates of X = 2,368,807.00 and Y = 355,625.00; thence East 743.00 feet to the Southwest corner of State Lease No. 18651 having Coordinates of X = 2,369,550.00 and Y = 355,625.00; thence continue East 3,526.00 feet along the South boundary of said State Lease No. 18651 to its Southeast corner having Coordinates of X = 2,373,076.00 and Y = 355,625.00; thence continue East 3,379.95 feet to a point having Coordinates of X = 2,376,455.95 and Y = 355,625.00; thence South 9,489.47 feet to a point having Coordinates of X = 2,376,455.95 and Y = 346,135.53; thence West 7,648.95 feet to a point having Coordinates of X = 2,368,807.00 and Y = 346,135.53; thence North 8,864.46 feet to the Southwest corner of said State Lease No. 19863 having Coordinates of X = 2,368,807.00 and Y = 355,000.00; thence continue North 625.00 feet to the Point of Beginning, **LESS AND EXCEPT** in its entirety State Lease No. 18076 described as follows: Beginning at a point having Coordinates of X = 2,368,807.00 and Y = 355,625.00; thence South 11 degrees 12 minutes 04 seconds East 3,927.82 feet to the point of beginning having Coordinates of X = 2,369,570.00 and Y = 351,772.00; thence North 2,344.00 feet to a point having Coordinates of X = 2,369,570.00 and Y = 354,116.00; thence East 3,159.00 feet to a point having Coordinates of X = 2,372,729.00 and Y = 354,116.00; thence South 2,344.00 feet to a point having Coordinates of X = 2,372,729.00 and Y = 351,772.00; thence West 3,159.00 feet to the point of beginning, containing approximately **1,461 acres**, all as more particularly outlined on a plat on file in the Office of Mineral Resources, Department of Natural Resources. All bearings, distances and coordinates are based on Louisiana Coordinate System of 1927, (North or South Zone), where applicable.

NOTE: The above description of the Tract nominated for lease has been provided and corrected, where required, exclusively by the nomination party. Any mineral lease selected from this Tract and awarded by the Louisiana State Mineral Board shall be without warranty of any kind, either express, implied, or statutory, including, but not limited to, the implied warranties of merchantability and fitness for a particular purpose. Should the mineral lease awarded by the Louisiana State Mineral Board be subsequently modified, cancelled or abrogated due to the existence of conflicting leases, operating agreements, private claims or other future obligations or conditions which may affect all or any portion of the leased Tract, it shall not relieve the Lessee of the obligation to pay any bonus due thereon to the Louisiana State Mineral Board, nor shall the Louisiana State Mineral Board be obligated to refund any consideration

paid by the Lessor prior to such modification, cancellation, or abrogation, including, but not limited to, bonuses, rentals and royalties.

NOTE: The State of Louisiana does hereby reserve, and this lease shall be subject to, the imprescriptible right of surface use in the nature of a servitude in favor of the Department of Natural Resources, including its Offices and Commissions, for the sole purpose of implementing, constructing, servicing and maintaining approved coastal zone management and/or restoration projects. Utilization of any and all rights derived under this lease by the mineral lessee, its agents, successors or assigns, shall not interfere with nor hinder the reasonable surface use by the Department of Natural Resources, its Offices or Commissions, as herein above reserved.

Applicant: LESLIE M. COOPER

Bidder	Cash Payment	Price/Acre	Rental	Oil	Gas	Other

Legend

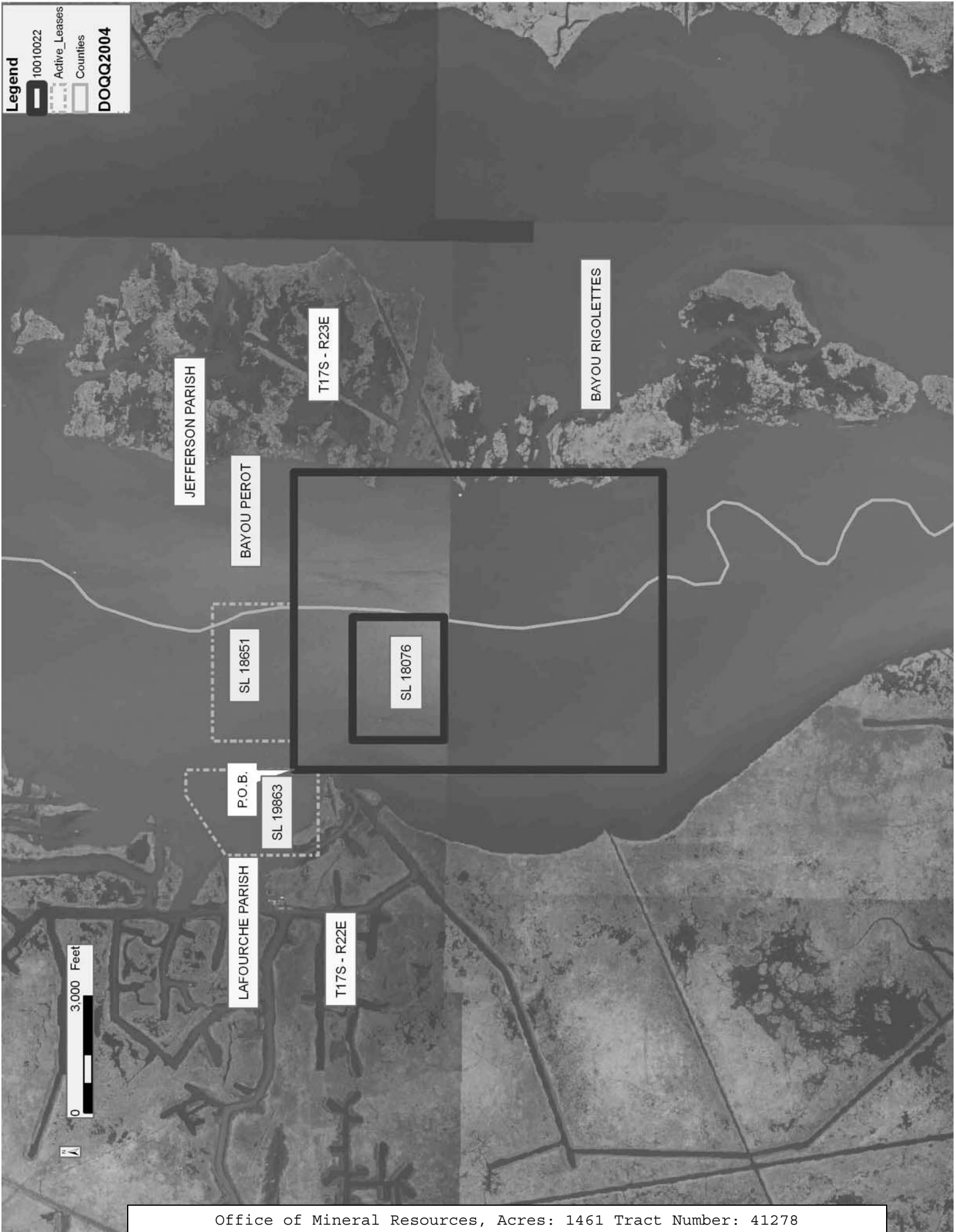
10010022

Active_Leases

Counties

DOQQ2004

0 3,000 Feet



TRACT 41279 - Jefferson and Lafourche Parishes, Louisiana

All of the lands now or formerly constituting the beds and bottoms of all water bodies of every nature and description the title of which vests in the State of Louisiana, together with all islands arising therein and other lands formed by accretion or by reliction, where allowed by law, excepting tax adjudicated lands, and not presently under mineral lease on January 13, 2010, situated in Jefferson and Lafourche Parishes, Louisiana, and more particularly described as follows: Beginning at a point having Coordinates of X = 2,368,807.00 and Y = 346,135.53; thence East 8,422.90 feet to a point having Coordinates of X = 2,377,229.90 and Y = 346,135.53; thence South 10,650.73 feet to a point having Coordinates of X = 2,377,229.90 and Y = 335,484.80; thence West 8,422.90 feet to a point having Coordinates of X = 2,368,807.00 and Y = 335,484.80; thence North 10,650.73 feet to the Point of Beginning, containing approximately **1,624 acres**, all as more particularly outlined on a plat on file in the Office of Mineral Resources, Department of Natural Resources. All bearings, distances and coordinates are based on Louisiana Coordinate System of 1927, (North or South Zone), where applicable.

NOTE: The above description of the Tract nominated for lease has been provided and corrected, where required, exclusively by the nomination party. Any mineral lease selected from this Tract and awarded by the Louisiana State Mineral Board shall be without warranty of any kind, either express, implied, or statutory, including, but not limited to, the implied warranties of merchantability and fitness for a particular purpose. Should the mineral lease awarded by the Louisiana State Mineral Board be subsequently modified, cancelled or abrogated due to the existence of conflicting leases, operating agreements, private claims or other future obligations or conditions which may affect all or any portion of the leased Tract, it shall not relieve the Lessee of the obligation to pay any bonus due thereon to the Louisiana State Mineral Board, nor shall the Louisiana State Mineral Board be obligated to refund any consideration paid by the Lessor prior to such modification, cancellation, or abrogation, including, but not limited to, bonuses, rentals and royalties.

NOTE: The State of Louisiana does hereby reserve, and this lease shall be subject to, the imprescriptible right of surface use in the nature of a servitude in favor of the Department of Natural Resources, including its Offices and Commissions, for the sole purpose of implementing, constructing, servicing and maintaining approved coastal zone management and/or restoration projects. Utilization of any and all rights derived under this lease by the mineral lessee, its agents, successors or assigns, shall not interfere with nor hinder the reasonable surface use by the Department of Natural Resources, its Offices or Commissions, as herein above reserved.

Applicant: LESLIE M. COOPER

Bidder	Cash Payment	Price/Acre	Rental	Oil	Gas	Other

Legend
10010021
Counties
DOQQ2004



TRACT 41280 - Jefferson Parish, Louisiana

All of the lands now or formerly constituting the beds and bottoms of all water bodies of every nature and description the title of which vests in the State of Louisiana, together with all islands arising therein and other lands formed by accretion or by reliction, where allowed by law, excepting tax adjudicated lands, and not presently under mineral lease on January 13, 2010, situated in Jefferson Parish, Louisiana, and more particularly described as follows: Beginning at a point having Coordinates of X = 2,377,229.90 and Y = 346,135.53; thence East 8,422.90 feet to a point having Coordinates of X = 2,385,652.80 and Y = 346,135.53; thence South 10,650.73 feet to a point having Coordinates of X = 2,385,652.80 and Y = 335,484.80; thence West 8,422.90 feet to a point having Coordinates of X = 2,377,229.90 and Y = 335,484.80; thence North 10,650.73 feet to the Point of Beginning, containing approximately **1,541 acres**, all as more particularly outlined on a plat on file in the Office of Mineral Resources, Department of Natural Resources. All bearings, distances and coordinates are based on Louisiana Coordinate System of 1927, (North or South Zone), where applicable.

NOTE: The above description of the Tract nominated for lease has been provided and corrected, where required, exclusively by the nomination party. Any mineral lease selected from this Tract and awarded by the Louisiana State Mineral Board shall be without warranty of any kind, either express, implied, or statutory, including, but not limited to, the implied warranties of merchantability and fitness for a particular purpose. Should the mineral lease awarded by the Louisiana State Mineral Board be subsequently modified, cancelled or abrogated due to the existence of conflicting leases, operating agreements, private claims or other future obligations or conditions which may affect all or any portion of the leased Tract, it shall not relieve the Lessee of the obligation to pay any bonus due thereon to the Louisiana State Mineral Board, nor shall the Louisiana State Mineral Board be obligated to refund any consideration paid by the Lessor prior to such modification, cancellation, or abrogation, including, but not limited to, bonuses, rentals and royalties.

NOTE: The State of Louisiana does hereby reserve, and this lease shall be subject to, the imprescriptible right of surface use in the nature of a servitude in favor of the Department of Natural Resources, including its Offices and Commissions, for the sole purpose of implementing, constructing, servicing and maintaining approved coastal zone management and/or restoration projects. Utilization of any and all rights derived under this lease by the mineral lessee, its agents, successors or assigns, shall not interfere with nor hinder the reasonable surface use by the Department of Natural Resources, its Offices or Commissions, as herein above reserved.

Applicant: LESLIE M. COOPER

Bidder	Cash Payment	Price/Acre	Rental	Oil	Gas	Other

JEFFERSON PARISH

BAYOU RIGOLETTES

P.O.B.



0 3,000 Feet



BAYOU PEROT

LAFOURCHE PARISH

T17S - R23E

TRACT 41281 - Jefferson and Plaquemines Parishes, Louisiana

All of the lands now or formerly constituting the beds and bottoms of all water bodies of every nature and description the title of which vests in the State of Louisiana, together with all islands arising therein and other lands formed by accretion or by reliction, where allowed by law, excepting tax adjudicated lands, and not presently under mineral lease on January 13, 2010, situated in Jefferson and Plaquemines Parishes, Louisiana, and more particularly described as follows: Beginning at a point having Coordinates of X = 2,426,981.40 and Y = 314,317.13; thence East 13,897.97 feet to a point having Coordinates of X = 2,440,879.37 and Y = 314,317.13; thence South 7,417.13 feet to a point having Coordinates of X = 2,440,879.37 and Y = 306,900.00; thence West 12,589.37 feet to the Northeast corner of State Lease No. 19949 having Coordinates of X = 2,428,290.00 and Y = 306,900.00; thence West 1,308.60 feet along the North boundary of said State Lease No. 19949 to its Northwest corner having Coordinates of X = 2,426,981.40 and Y = 306,900.00; thence North 7,417.13 feet to the point of beginning, containing approximately **1,048 acres**, all as more particularly outlined on a plat on file in the Office of Mineral Resources, Department of Natural Resources. All bearings, distances and coordinates are based on Louisiana Coordinate System of 1927, (North or South Zone), where applicable.

NOTE: The above description of the Tract nominated for lease has been provided and corrected, where required, exclusively by the nomination party. Any mineral lease selected from this Tract and awarded by the Louisiana State Mineral Board shall be without warranty of any kind, either express, implied, or statutory, including, but not limited to, the implied warranties of merchantability and fitness for a particular purpose. Should the mineral lease awarded by the Louisiana State Mineral Board be subsequently modified, cancelled or abrogated due to the existence of conflicting leases, operating agreements, private claims or other future obligations or conditions which may affect all or any portion of the leased Tract, it shall not relieve the Lessee of the obligation to pay any bonus due thereon to the Louisiana State Mineral Board, nor shall the Louisiana State Mineral Board be obligated to refund any consideration paid by the Lessor prior to such modification, cancellation, or abrogation, including, but not limited to, bonuses, rentals and royalties.

NOTE: The State of Louisiana does hereby reserve, and this lease shall be subject to, the imprescriptible right of surface use in the nature of a servitude in favor of the Department of Natural Resources, including its Offices and Commissions, for the sole purpose of implementing, constructing, servicing and maintaining approved coastal zone management and/or restoration projects. Utilization of any and all rights derived under this lease by the mineral lessee, its agents, successors or assigns, shall not interfere with nor hinder the reasonable surface use by the Department of Natural Resources, its Offices or Commissions, as herein above reserved.

NOTE: The Department of Wildlife and Fisheries has designated certain areas in the coastal waters of the State of Louisiana as Oyster Seed Bed Areas. The exact location of those Seed Bed Areas must be obtained from the Department of Wildlife and Fisheries and any work done under a mineral lease from the State of Louisiana may necessarily be conducted in conformity with the rules and regulations promulgated by the said Department of Wildlife and Fisheries for Oyster Seed Bed Areas.

Applicant: LESLIE M. COOPER

Bidder	Cash Payment	Price/Acre	Rental	Oil	Gas	Other

Legend

10010025

Active_Leases

Counties

DOQQ2004

0 3,000 Feet



PLAQUEMINES PARISH

LAKE FIVE

JEFFERSON PARISH

P.O.B.

BAYOU DUPONT

SL 19949

T18S - R24E

TRACT 41282 - Jefferson Parish, Louisiana

All of the lands now or formerly constituting the beds and bottoms of all water bodies of every nature and description the title of which vests in the State of Louisiana, together with all islands arising therein and other lands formed by accretion or by reliction, where allowed by law, excepting tax adjudicated lands, and not presently under mineral lease on January 13, 2010, situated in Jefferson Parish, Louisiana, and more particularly described as follows: Beginning at a point having Coordinates of X = 2,411,408.28 and Y = 311,682.04; thence East 15,573.12 feet to a point having Coordinates of X = 2,426,981.40 and Y = 311,682.04; thence South 4,782.04 feet to the Northwest corner of State Lease No. 19949 having Coordinates of X = 2,426,981.40 and Y = 306,900.00; thence South 321.40 feet along the West boundary of said State Lease No. 19949 to the Northeast corner of State Lease No. 19282 having Coordinates of X = 2,426,981.40 and Y = 306,578.60; thence along the boundary of said State Lease No. 19282 the following courses: South 89 degrees 00 minutes 35 seconds West 5,112.16 feet to a point having Coordinates of X = 2,421,870.01 and Y = 306,490.25; South 00 degrees 53 minutes 00 seconds East 2,982.53 feet to a point having Coordinates of X = 2,421,915.98 and Y = 303,508.07; North 89 degrees 59 minutes 58 seconds East 283.64 feet to a point having Coordinates X = 2,422,199.62 and Y = 303,508.07 and South 2,292.86 feet to a point having Coordinates of X = 2,422,199.62 and Y = 301,215.21; thence West 10,791.34 feet to a point having Coordinates of X = 2,411,408.28 and Y = 301,215.21; thence North 10,466.83 feet to the point of beginning, (This tract includes only waterbottoms claimed and owned by the state and specifically excludes any land which the state may claim or own and to which the mineral rights are vested in the state), the above described tract contains approximately **1,095 acres**, all as more particularly outlined on a plat on file in the Office of Mineral Resources, Department of Natural Resources. All bearings, distances and coordinates are based on Louisiana Coordinate System of 1927, (North or South Zone), where applicable.

NOTE: The above description of the Tract nominated for lease has been provided and corrected, where required, exclusively by the nomination party. Any mineral lease selected from this Tract and awarded by the Louisiana State Mineral Board shall be without warranty of any kind, either express, implied, or statutory, including, but not limited to, the implied warranties of merchantability and fitness for a particular purpose. Should the mineral lease awarded by the Louisiana State Mineral Board be subsequently modified, cancelled or abrogated due to the existence of conflicting leases, operating agreements, private claims or other future obligations or conditions which may affect all or any portion of the leased Tract, it shall not relieve the Lessee of the obligation to pay any bonus due thereon to the Louisiana State Mineral Board, nor shall the Louisiana State Mineral Board be obligated to refund any consideration paid by the Lessor prior to such modification, cancellation, or abrogation, including, but not limited to, bonuses, rentals and royalties.

NOTE: The State of Louisiana does hereby reserve, and this lease shall be subject to, the imprescriptible right of surface use in the nature of a servitude in favor of the Department of Natural Resources, including its Offices and Commissions, for the sole purpose of implementing, constructing, servicing and maintaining approved coastal zone management and/or restoration projects. Utilization of any and all rights derived under this lease by the mineral lessee, its agents, successors or assigns, shall not interfere with nor hinder the reasonable surface use by the Department of Natural Resources, its Offices or Commissions, as herein above reserved.

NOTE: The Department of Wildlife and Fisheries has designated certain areas in the coastal waters of the State of Louisiana as Oyster Seed Bed Areas. The exact location of those Seed Bed Areas must be obtained from the Department of Wildlife and Fisheries and any work done under a mineral lease from the State of Louisiana may necessarily be conducted in conformity with the rules and regulations promulgated by the said Department of Wildlife and Fisheries for Oyster Seed Bed Areas.

Applicant: LESLIE M. COOPER

Bidder	Cash Payment	Price/Acre	Rental	Oil	Gas	Other

10010024

Active_Lease

DOQQ2004

JEFFERSON PARISH

THREE BAYOU BAY

BAYOU BARATARIA

P.O.B.

BAYOU ST DENIS

T18S - R24E

SL 19949

SL 19282

0 3,000 Feet

