

TRACT 41283 - Jefferson and Plaquemines Parishes, Louisiana

All of the lands now or formerly constituting the beds and bottoms of all water bodies of every nature and description the title of which vests in the State of Louisiana, together with all islands arising therein and other lands formed by accretion or by reliction, where allowed by law, excepting tax adjudicated lands, and not presently under mineral lease on January 13, 2010, situated in Jefferson and Plaquemines Parishes, Louisiana, and more particularly described as follows: Beginning at the Northeast corner of State Lease No. 19949 having Coordinates of X = 2,428,290.00 and Y = 306,900.00; thence East 10,273.01 feet to a point having Coordinates of X = 2,438,563.01 and Y = 306,900.00; thence South 11,768.69 feet to a point having Coordinates of X = 2,438,563.01 and Y = 295,131.31; thence West 2,084.37 feet to a point on the Eastern boundary of State Lease No. 13407, as amended, having Coordinates of X = 2,436,478.63 and Y = 295,131.31; thence along the boundary of said State Lease No. 13407 the following courses: North 25 degrees 51 minutes 20 seconds East 1,298.69 feet to a point having Coordinates of X = 2,437,045.00 and Y = 296,300.00; North 70 degrees 24 minutes 12 seconds West 1,013.72 feet to a point having Coordinates of X = 2,436,090.00 and Y = 296,640.00; Southwesterly along an arc to the left having a radius of 3,090.00 feet and a center at X = 2,436,544.30 and Y = 293,583.58 to a point having Coordinates of X = 2,435,000.00 and Y = 296,260.00; Southwesterly along an arc to the left having a radius of 1,400.00 feet and a center at X = 2,435,752.43 and Y = 295,079.38 to a point having Coordinates of X = 2,434,567.50 and Y = 295,825.00; South 30 degrees 11 minutes 16 seconds West 601.59 feet to a point having Coordinates of X = 2,434,265.00 and Y = 295,305.00 and Southwesterly along an arc to the right having a radius of 5,000.00 feet and a center at X = 2,430,272.10 and Y = 298,314.44 to a point having Coordinates of X = 2,434,127.96 and Y = 295,131.31; thence West 7,051.26 feet to a point having Coordinates of X = 2,427,076.70 and Y = 295,131.31; thence North 6,168.99 feet to the Southeast corner of State Lease No. 19282 having Coordinates of X = 2,427,076.70 and Y = 301,300.30; thence North 01 degrees 02 minutes 04 seconds West 2,770.15 feet along the East boundary of said State Lease No. 19282 to the Southwest corner of said State Lease No. 19949 having Coordinates of X = 2,427,026.70 and Y = 304,070.00; thence along the boundary of said State Lease No. 19949 the following courses: East 1,263.31 feet to a point having Coordinates of X = 2,428,290.00 and Y = 304,070.00 and North 2,830.00 feet to the point of beginning, (This tract includes only waterbottoms claimed and owned by the state and specifically excludes any land which the state may claim or own and to which the mineral rights are vested in the state), the above described tract contains approximately **1,714 acres**, all as more particularly outlined on a plat on file in the Office of Mineral Resources, Department of Natural Resources. All bearings, distances and coordinates are based on Louisiana Coordinate System of 1927, (North or South Zone), where applicable.

NOTE: The above description of the Tract nominated for lease has been provided and corrected, where required, exclusively by the nomination

party. Any mineral lease selected from this Tract and awarded by the Louisiana State Mineral Board shall be without warranty of any kind, either express, implied, or statutory, including, but not limited to, the implied warranties of merchantability and fitness for a particular purpose. Should the mineral lease awarded by the Louisiana State Mineral Board be subsequently modified, cancelled or abrogated due to the existence of conflicting leases, operating agreements, private claims or other future obligations or conditions which may affect all or any portion of the leased Tract, it shall not relieve the Lessee of the obligation to pay any bonus due thereon to the Louisiana State Mineral Board, nor shall the Louisiana State Mineral Board be obligated to refund any consideration paid by the Lessor prior to such modification, cancellation, or abrogation, including, but not limited to, bonuses, rentals and royalties.

NOTE: The State of Louisiana does hereby reserve, and this lease shall be subject to, the imprescriptible right of surface use in the nature of a servitude in favor of the Department of Natural Resources, including its Offices and Commissions, for the sole purpose of implementing, constructing, servicing and maintaining approved coastal zone management and/or restoration projects. Utilization of any and all rights derived under this lease by the mineral lessee, its agents, successors or assigns, shall not interfere with nor hinder the reasonable surface use by the Department of Natural Resources, its Offices or Commissions, as herein above reserved.

NOTE: The Department of Wildlife and Fisheries has designated certain areas in the coastal waters of the State of Louisiana as Oyster Seed Bed Areas. The exact location of those Seed Bed Areas must be obtained from the Department of Wildlife and Fisheries and any work done under a mineral lease from the State of Louisiana may necessarily be conducted in conformity with the rules and regulations promulgated by the said Department of Wildlife and Fisheries for Oyster Seed Bed Areas.

Applicant: LESLIE M. COOPER

Bidder	Cash Payment	Price/Acre	Rental	Oil	Gas	Other

Legend

10010026

Active_Leases

Counties

DOQQ2004

0 3,000 Feet



JEFFERSON PARISH

PLAQUEMINES PARISH

P.O.B.

SL 19949

SL 19282

T18S - R24E

BAYOU DUPONT

BAYOU BARATARIA

SL 13407

TRACT 41284 - Plaquemines Parish, Louisiana

All of the lands now or formerly constituting the beds and bottoms of all water bodies of every nature and description the title of which vests in the State of Louisiana, together with all islands arising therein and other lands formed by accretion or by reliction, where allowed by law, excepting tax adjudicated lands, and not presently under mineral lease on January 13, 2010, situated in Plaquemines Parish, Louisiana, and more particularly described as follows: Beginning at a point having Coordinates of X = 2,438,563.01 and Y = 306,900.00; thence East 10,377.44 feet to a point having Coordinates of X = 2,448,940.45 and Y = 306,900.00; thence South 11,768.69 feet to a point having Coordinates of X = 2,448,940.45 and Y = 295,131.31; thence West 10,377.44 feet to a point having Coordinates of X = 2,438,563.01 and Y = 295,131.31; thence North 11,768.69 feet to the point of beginning, containing approximately **935 acres**, all as more particularly outlined on a plat on file in the Office of Mineral Resources, Department of Natural Resources. All bearings, distances and coordinates are based on Louisiana Coordinate System of 1927, (North or South Zone), where applicable.

NOTE: The above description of the Tract nominated for lease has been provided and corrected, where required, exclusively by the nomination party. Any mineral lease selected from this Tract and awarded by the Louisiana State Mineral Board shall be without warranty of any kind, either express, implied, or statutory, including, but not limited to, the implied warranties of merchantability and fitness for a particular purpose. Should the mineral lease awarded by the Louisiana State Mineral Board be subsequently modified, cancelled or abrogated due to the existence of conflicting leases, operating agreements, private claims or other future obligations or conditions which may affect all or any portion of the leased Tract, it shall not relieve the Lessee of the obligation to pay any bonus due thereon to the Louisiana State Mineral Board, nor shall the Louisiana State Mineral Board be obligated to refund any consideration paid by the Lessor prior to such modification, cancellation, or abrogation, including, but not limited to, bonuses, rentals and royalties.

NOTE: The State of Louisiana does hereby reserve, and this lease shall be subject to, the imprescriptible right of surface use in the nature of a servitude in favor of the Department of Natural Resources, including its Offices and Commissions, for the sole purpose of implementing, constructing, servicing and maintaining approved coastal zone management and/or restoration projects. Utilization of any and all rights derived under this lease by the mineral lessee, its agents, successors or assigns, shall not interfere with nor hinder the reasonable surface use by the Department of Natural Resources, its Offices or Commissions, as herein above reserved.

NOTE: The Department of Wildlife and Fisheries has designated certain areas in the coastal waters of the State of Louisiana as Oyster Seed Bed Areas. The exact location of those Seed Bed Areas must be obtained from

the Department of Wildlife and Fisheries and any work done under a mineral lease from the State of Louisiana may necessarily be conducted in conformity with the rules and regulations promulgated by the said Department of Wildlife and Fisheries for Oyster Seed Bed Areas.

Applicant: LESLIE M. COOPER

Bidder	Cash Payment	Price/Acre	Rental	Oil	Gas	Other

Legend
10010027
DOQQ2004

0 4,000 Feet

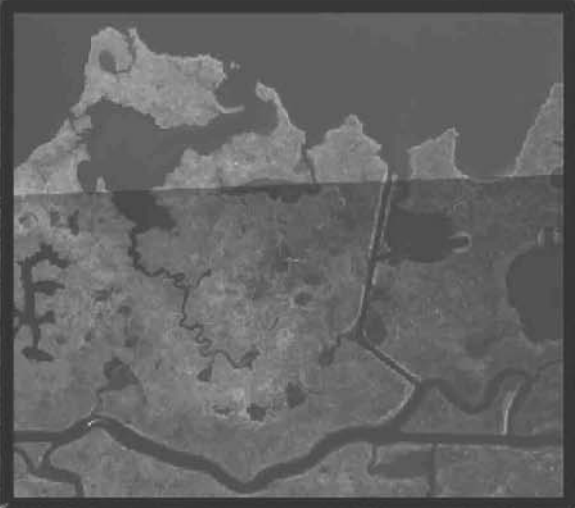


PLAQUEMINES PARISH

WILKINSON BAY

BAYOU DUPONT

P.O.B.



TRACT 41285 - Jefferson and Plaquemines Parishes, Louisiana

All of the lands now or formerly constituting the beds and bottoms of all water bodies of every nature and description the title of which vests in the State of Louisiana, together with all islands arising therein and other lands formed by accretion or by reliction, where allowed by law, excepting tax adjudicated lands, and not presently under mineral lease on January 13, 2010, situated in Jefferson and Plaquemines Parishes, Louisiana, and more particularly described as follows: Beginning at a point having Coordinates of X = 2,429,325.78 and Y = 295,131.31; thence East 4,802.18 feet to a point on the Western boundary of State Lease No. 13407, as amended, having Coordinates of X = 2,434,127.96 and Y = 295,131.31; thence along the boundary of said State Lease No. 13407 the following courses: Southwesterly along an arc to the right having a radius of 5,000.00 feet and a center at X = 2,430,272.10 and Y = 298,314.44 to a point having Coordinates of X = 2,432,620.00 and Y = 293,899.99; South 21 degrees 12 minutes 23 seconds East 2,070.87 feet to a point having Coordinates of X = 2,433,369.09 and Y = 291,969.36; South 69 degrees 10 minutes 45 seconds East 814.07 feet to a point having Coordinates of X = 2,434,130.00 and Y = 291,680.00; Northeasterly along an arc to the left having a radius of 13,000.00 feet and a center at X = 2,424,693.16 and Y = 300,621.25 to a point having Coordinates of X = 2,436,415.00 and Y = 295,000.00 and North 25 degrees 51 minutes 20 seconds East 145.92 feet to a point having Coordinates of X = 2,436,478.63 and Y = 295,131.31; thence East 9,381.70 feet to a point having Coordinates of X = 2,445,860.33 and Y = 295,131.31; thence South 1,819.35 feet to the Northeast corner of State Lease No. 11036, as amended, having Coordinates of X = 2,445,860.33 and Y = 293,311.96; thence along the boundary of said State Lease No. 11036 the following courses: South 83 degrees 38 minutes 20 seconds West 1,847.89 feet to a point having Coordinates of X = 2,444,023.82 and Y = 293,107.22 and South 06 degrees 41 minutes 47 seconds East 1,834.75 feet to the Northeast corner of State Lease No. 19384 having Coordinates of X = 2,444,237.76 and Y = 291,284.98; thence along the boundary of said State Lease No. 19384 the following course: South 83 degrees 37 minutes 00 seconds West 3,733.52 feet to a point having Coordinates of X = 2,440,527.39 and Y = 290,869.89 and South 06 degrees 23 minutes 00 seconds East 988.64 feet to a point having Coordinates of X = 2,440,637.31 and Y = 289,887.38; thence West 10,711.97 feet to the Southernmost point of State Lease No. 15858, as amended, having Coordinates of X = 2,429,925.34 and Y = 289,887.38; thence along the boundary of said State Lease No. 15858 the following courses: Northeasterly along an arc to the left having a radius of 1,760.00 feet and a center at X = 2,429,853.93 and Y = 291,645.93 to a point having Coordinates of X = 2,430,917.06 and Y = 290,243.31 and Northeasterly along an arc to the left having a radius of 1,686.00 feet and a center at X = 2,430,000.21 and Y = 291,658.22 to its Southeast corner, also being the Southernmost corner of State Lease No. 16007, as amended, having Coordinates of X = 2,431,205.25 and Y = 290,479.04; thence along the boundary of said State Lease No. 16007 the following courses: Northeasterly along an arc to the left having a radius of 1,686.00 feet and a center at X = 2,430,000.21 and Y = 291,658.22 to a point having

Coordinates of X = 2,431,623.62 and Y = 291,203.10 and Northeasterly along an arc to the left having a radius of 4,000.00 feet and a center at X = 2,427,673.35 and Y = 291,831.92 to its Northeast corner, also being the Southeast corner of State Lease No. 16006, as amended, having Coordinates of X = 2,431,655.36 and Y = 292,210.86; thence along the boundary of said State Lease No. 16006 the following courses: Northwesterly along an arc to the left having a radius of 4,000.00 feet and a center at X = 2,427,673.35 and Y = 291,831.92 to a point having Coordinates of X = 2,431,547.41 and Y = 292,827.75 and North 68 degrees 32 minutes 33 seconds West 2,387.08 feet to its Northwest corner having Coordinates of X = 2,429,325.78 and Y = 293,700.97; thence North 1,430.34 feet to the point of beginning, (This tract includes only waterbottoms claimed and owned by the state and specifically excludes any land which the state may claim or own and to which the mineral rights are vested in the state), the above described tract contains approximately **510 acres**, all as more particularly outlined on a plat on file in the Office of Mineral Resources, Department of Natural Resources. All bearings, distances and coordinates are based on Louisiana Coordinate System of 1927, (North or South Zone), where applicable.

NOTE: The above description of the Tract nominated for lease has been provided and corrected, where required, exclusively by the nomination party. Any mineral lease selected from this Tract and awarded by the Louisiana State Mineral Board shall be without warranty of any kind, either express, implied, or statutory, including, but not limited to, the implied warranties of merchantability and fitness for a particular purpose. Should the mineral lease awarded by the Louisiana State Mineral Board be subsequently modified, cancelled or abrogated due to the existence of conflicting leases, operating agreements, private claims or other future obligations or conditions which may affect all or any portion of the leased Tract, it shall not relieve the Lessee of the obligation to pay any bonus due thereon to the Louisiana State Mineral Board, nor shall the Louisiana State Mineral Board be obligated to refund any consideration paid by the Lessor prior to such modification, cancellation, or abrogation, including, but not limited to, bonuses, rentals and royalties.

NOTE: The State of Louisiana does hereby reserve, and this lease shall be subject to, the imprescriptible right of surface use in the nature of a servitude in favor of the Department of Natural Resources, including its Offices and Commissions, for the sole purpose of implementing, constructing, servicing and maintaining approved coastal zone management and/or restoration projects. Utilization of any and all rights derived under this lease by the mineral lessee, its agents, successors or assigns, shall not interfere with nor hinder the reasonable surface use by the Department of Natural Resources, its Offices or Commissions, as herein above reserved.

NOTE: The Department of Wildlife and Fisheries has designated certain areas in the coastal waters of the State of Louisiana as Oyster Seed Bed

Areas. The exact location of those Seed Bed Areas must be obtained from the Department of Wildlife and Fisheries and any work done under a mineral lease from the State of Louisiana may necessarily be conducted in conformity with the rules and regulations promulgated by the said Department of Wildlife and Fisheries for Oyster Seed Bed Areas.

Applicant: LESLIE M. COOPER

Bidder	Cash Payment	Price/Acre	Rental	Oil	Gas	Other

Legend

- 10010028
- Active_Leases
- Counties

DOQQ2004

0 3,000 Feet



PLAQUEMINES PARISH

BAYOU DUPONT

SL 13407

SL 11036

SL 19384

BARATARIA BAY

JEFFERSON PARISH

P.O.B.

SL 16006

SL 16007

SL 15858

HACKBERRY BAY

TRACT 41286 - Terrebonne Parish, Louisiana

A portion of the beds and bottoms of Lake Chien created by erosion since 1812 and belonging to the State of Louisiana in its public trust capacity and not presently under mineral lease by the State of Louisiana on January 13, 2010 and being more particularly described as follows: Section 16, Township 20 South Range 20 East, (This lease includes only waterbottoms claimed and owned by the State created by shoreline erosion of Lake Chien and specifically excludes any land owned by the Terrebonne and Lafourche Parish School Boards), containing approximately **364 acres**, all as more particularly outlined on a plat on file in the Office of Mineral Resources, Department of Natural Resources. All bearings, distances and coordinates are based on Louisiana Coordinate System of 1927, (North or South Zone), where applicable.

NOTE: The above description of the Tract nominated for lease has been provided and corrected, where required, exclusively by the nomination party. Any mineral lease selected from this Tract and awarded by the Louisiana State Mineral Board shall be without warranty of any kind, either express, implied, or statutory, including, but not limited to, the implied warranties of merchantability and fitness for a particular purpose. Should the mineral lease awarded by the Louisiana State Mineral Board be subsequently modified, cancelled or abrogated due to the existence of conflicting leases, operating agreements, private claims or other future obligations or conditions which may affect all or any portion of the leased Tract, it shall not relieve the Lessee of the obligation to pay any bonus due thereon to the Louisiana State Mineral Board, nor shall the Louisiana State Mineral Board be obligated to refund any consideration paid by the Lessor prior to such modification, cancellation, or abrogation, including, but not limited to, bonuses, rentals and royalties.

NOTE: The Office of Mineral Resources acknowledges that said Township 20 South , Range 20 East, is located 89.34% in Terrebonne Parish and 10.66% in LaFourche Parish, and Lessee is authorized and directed to pay any and all rentals and royalties which may accrue under the terms of this lease to the Office of Mineral Resources. All monies received herein by the Office of Mineral Resources shall be distributed in the following proportions: 89.34% to Terrebonne Parish School Board and 10.66% to LaFourche Parish School Board.

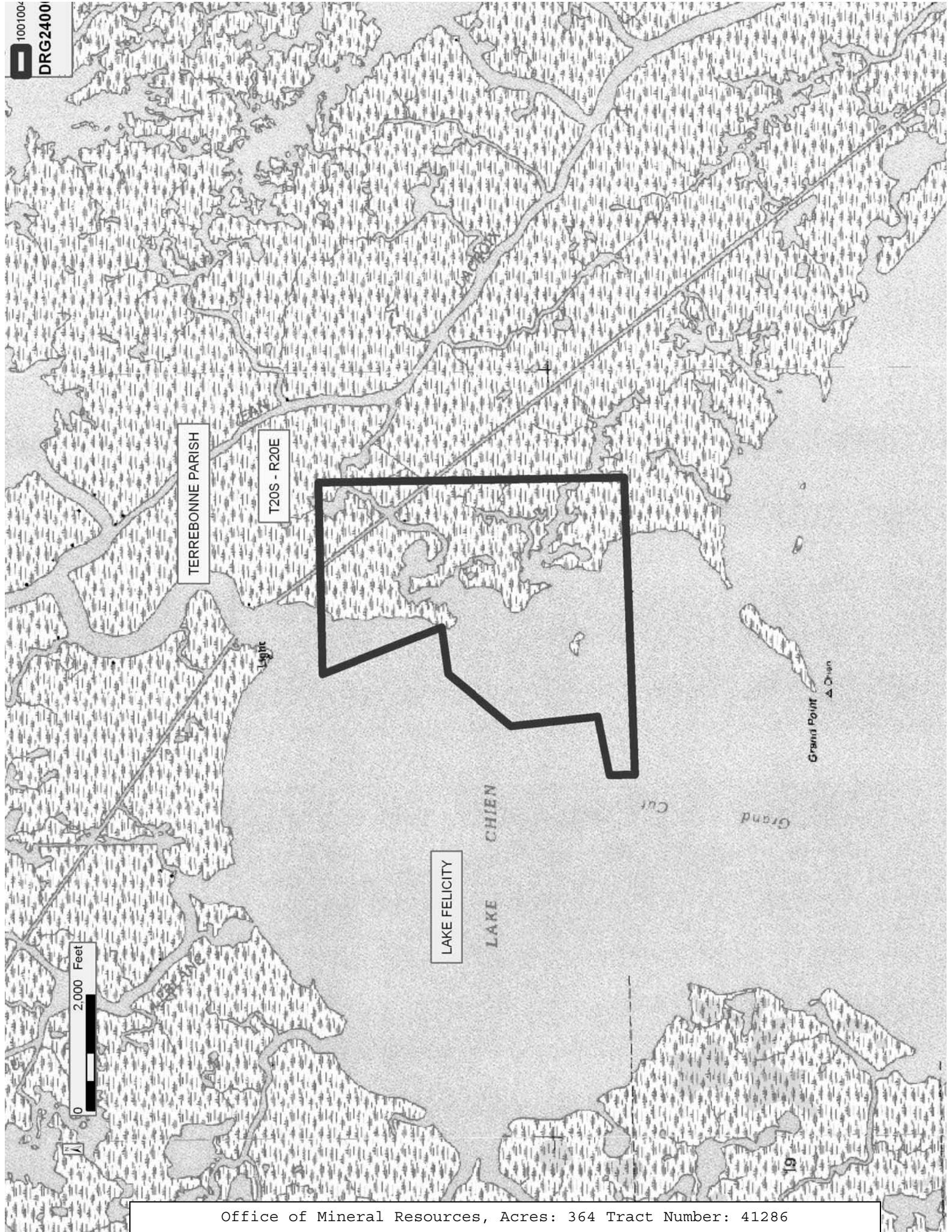
NOTE: Any bid on this Tract shall contain, as additional consideration by the bidder, the obligation of the bidder, should a title dispute arise regarding this Tract and litigation ensue, to pay to the State, as same may be billed, any and all legal cost as incurred by the State of Louisiana in defending its title to said Tract up to a maximum aggregate amount of one hundred fifty thousand and no/100 dollars (\$150,000.00) for all leases taken by same successful bidder in the same area. Failure to so include the additional consideration herein set forth may, at the sole discretion of the State Mineral Board, render the bid unacceptable.

NOTE: The State of Louisiana does hereby reserve, and this lease shall be subject to, the imprescriptible right of surface use in the nature of a servitude in favor of the Department of Natural Resources, including its Offices and Commissions, for the sole purpose of implementing, constructing, servicing and maintaining approved coastal zone management and/or restoration projects. Utilization of any and all rights derived under this lease by the mineral lessee, its agents, successors or assigns, shall not interfere with nor hinder the reasonable surface use by the Department of Natural Resources, its Offices or Commissions, as herein above reserved.

NOTE: The Department of Wildlife and Fisheries has designated certain areas in the coastal waters of the State of Louisiana as Oyster Seed Bed Areas. The exact location of those Seed Bed Areas must be obtained from the Department of Wildlife and Fisheries and any work done under a mineral lease from the State of Louisiana may necessarily be conducted in conformity with the rules and regulations promulgated by the said Department of Wildlife and Fisheries for Oyster Seed Bed Areas.

Applicant: SPECTER EXPLORATION, INC.

Bidder	Cash Payment	Price/Acre	Rental	Oil	Gas	Other



TERREBONNE PARISH

T20S - R20E

LAKE FELICITY

LAKE CHIEN

Grand Point
▲ Ocean

0 2,000 Feet

TRACT 41287 - Plaquemines Parish, Louisiana

All of the lands now or formerly constituting the beds and bottoms of all water bodies of every nature and description the title of which vests in the State of Louisiana, together with all islands arising therein and other lands formed by accretion or by reliction, where allowed by law, excepting tax adjudicated lands, and not presently under mineral lease on January 13, 2010, situated in Plaquemines Parish, Louisiana, and more particularly described as follows: Beginning at a point having Coordinates of X = 2,647,154.45 and Y = 189,338.76; thence North 87 degrees 22 minutes 34 seconds East 11,477.19 feet to a point having Coordinates of X = 2,658,619.60 and Y = 189,864.16; thence South 10,739.01 feet to a point having Coordinates of X = 2,658,619.60 and Y = 179,125.15; thence Westerly approximately 3,101 feet to the Northeast corner of State Lease No. 3382, as amended; thence Westerly approximately 5,472 feet along the North boundary of said State Lease No. 3382 to its Northwest corner, also being the Northeast corner of Operating Agreement No. 0304; thence Westerly approximately 2,566 feet along the North boundary of said Operating Agreement No. 0304 to its Northwest corner, also being the Northeast corner of the Eastern portion of Operating Agreement No. 0006; thence Westerly approximately 2,598 feet along the North boundary of said Operating Agreement No. 0006 to its Northwest corner, also being the Northeast corner of the Western portion of Operating Agreement No. 0005; thence Westerly approximately 1,795 feet along the North boundary of said Operating Agreement No. 0005 to its Northwest corner, also being a point on the Eastern boundary of State Lease No. 451; thence Northerly approximately 4,933 feet along the Eastern boundary of said State Lease No. 451 to its Northeast corner; thence Northerly approximately 375 feet to a point having Coordinates of X = 2,642,993.21 and Y = 184,032.66; thence East 4,331.09 feet to a point having Coordinates of X = 2,647,324.30 and Y = 184,032.66; thence North 01 degrees 50 minutes 00 seconds West 5,308.82 feet to the point of beginning, **LESS AND EXCEPT** that portion, if any, of State Lease No. 451, State Lease No. 3382, as amended, Operating Agreement No. 0005, Operating Agreement No. 0006 and Operating Agreement No. 0304 which may lie within the above described tract, containing approximately **2,324 acres**, all as more particularly outlined on a plat on file in the Office of Mineral Resources, Department of Natural Resources. All bearings, distances and coordinates are based on Louisiana Coordinate System of 1927, (North or South Zone), where applicable.

NOTE: The above description of the Tract nominated for lease has been provided and corrected, where required, exclusively by the nomination party. Any mineral lease selected from this Tract and awarded by the Louisiana State Mineral Board shall be without warranty of any kind, either express, implied, or statutory, including, but not limited to, the implied warranties of merchantability and fitness for a particular purpose. Should the mineral lease awarded by the Louisiana State Mineral Board be subsequently modified, cancelled or abrogated due to the existence of conflicting leases, operating agreements, private claims or other future obligations or conditions which may affect all or any portion

of the leased Tract, it shall not relieve the Lessee of the obligation to pay any bonus due thereon to the Louisiana State Mineral Board, nor shall the Louisiana State Mineral Board be obligated to refund any consideration paid by the Lessor prior to such modification, cancellation, or abrogation, including, but not limited to, bonuses, rentals and royalties.

NOTE: The State of Louisiana does hereby reserve, and this lease shall be subject to, the imprescriptible right of surface use in the nature of a servitude in favor of the Department of Natural Resources, including its Offices and Commissions, for the sole purpose of implementing, constructing, servicing and maintaining approved coastal zone management and/or restoration projects. Utilization of any and all rights derived under this lease by the mineral lessee, its agents, successors or assigns, shall not interfere with nor hinder the reasonable surface use by the Department of Natural Resources, its Offices or Commissions, as herein above reserved.

NOTE: The Department of Wildlife and Fisheries has designated certain areas in the coastal waters of the State of Louisiana as Oyster Seed Bed Areas. The exact location of those Seed Bed Areas must be obtained from the Department of Wildlife and Fisheries and any work done under a mineral lease from the State of Louisiana may necessarily be conducted in conformity with the rules and regulations promulgated by the said Department of Wildlife and Fisheries for Oyster Seed Bed Areas.

Applicant: LESLIE M. COOPER

Bidder	Cash Payment	Price/Acre	Rental	Oil	Gas	Other

Legend

10010019

Active_Leases

DOQQ2004

PLAQUEMINES PARISH

T22S - R31E

MISSISSIPPI RIVER

P.O.B.

GULF OF MEXICO

SL 3382

AO 0304

AO 0006

AO 0005

SL 451

0 3,000 Feet



TRACT 41288 - Plaquemines Parish, Louisiana

All of the lands now or formerly constituting the beds and bottoms of all water bodies of every nature and description the title of which vests in the State of Louisiana, together with all islands arising therein and other lands formed by accretion or by reliction, where allowed by law, excepting tax adjudicated lands, and not presently under mineral lease on January 13, 2010, situated in Plaquemines Parish, Louisiana, and more particularly described as follows: Beginning at a point having Coordinates of X = 2,659,500.86 and Y = 173,750.06; thence South approximately 696 feet to a point on the North boundary of State Lease No. 2484 having a Coordinate of X = 2,659,500.86; thence Westerly approximately 16,288 feet along the North boundary of said State Lease No. 2484 to a point on the Eastern boundary of State Lease No. 451; thence Northerly approximately 357 feet along the Eastern boundary of said State Lease No. 451 to the Southwest corner of the Western portion of Operating Agreement No. 0006; thence Easterly approximately 1,737 feet along the South boundary of said Operating Agreement No. 0006 to its Southeast corner, also being the Southwest corner of the Eastern portion of Operating Agreement No. 0005; thence Easterly approximately 2,713 feet along the South boundary of said Operating Agreement No. 0005 to its Southeast corner, also being the Southwest corner of Operating Agreement No. 0304; thence Easterly approximately 2,576 feet along the South boundary of said Operating Agreement No. 0304 to its Southeast corner, also being the Southwest corner of State Lease No. 3382, as amended; thence along the boundary of said State Lease No. 3382 the following courses: Easterly approximately 5,502 feet to its Southeast corner and Northerly approximately 5,286 feet to its Northeast corner; thence Easterly approximately 3,103 feet to a point having Coordinates of X = 2,658,621.79 and Y = 179,125.21; thence South 09 degrees 17 minutes 17 seconds East 5,446.56 feet to the point of beginning, **LESS AND EXCEPT** that portion, if any, of State Lease No. 451, State Lease No. 2484, State Lease No. 3382, as amended, Operating Agreement No. 0005, Operating Agreement No. 0006 and Operating Agreement No. 0304 which may lie within the above described tract, containing approximately **623 acres**, all as more particularly outlined on a plat on file in the Office of Mineral Resources, Department of Natural Resources. All bearings, distances and coordinates are based on Louisiana Coordinate System of 1927, (North or South Zone), where applicable.

NOTE: The above description of the Tract nominated for lease has been provided and corrected, where required, exclusively by the nomination party. Any mineral lease selected from this Tract and awarded by the Louisiana State Mineral Board shall be without warranty of any kind, either express, implied, or statutory, including, but not limited to, the implied warranties of merchantability and fitness for a particular purpose. Should the mineral lease awarded by the Louisiana State Mineral Board be subsequently modified, cancelled or abrogated due to the existence of conflicting leases, operating agreements, private claims or other future obligations or conditions which may affect all or any portion of the leased Tract, it shall not relieve the Lessee of the obligation to

pay any bonus due thereon to the Louisiana State Mineral Board, nor shall the Louisiana State Mineral Board be obligated to refund any consideration paid by the Lessor prior to such modification, cancellation, or abrogation, including, but not limited to, bonuses, rentals and royalties.

NOTE: The State of Louisiana does hereby reserve, and this lease shall be subject to, the imprescriptible right of surface use in the nature of a servitude in favor of the Department of Natural Resources, including its Offices and Commissions, for the sole purpose of implementing, constructing, servicing and maintaining approved coastal zone management and/or restoration projects. Utilization of any and all rights derived under this lease by the mineral lessee, its agents, successors or assigns, shall not interfere with nor hinder the reasonable surface use by the Department of Natural Resources, its Offices or Commissions, as herein above reserved.

NOTE: The Department of Wildlife and Fisheries has designated certain areas in the coastal waters of the State of Louisiana as Oyster Seed Bed Areas. The exact location of those Seed Bed Areas must be obtained from the Department of Wildlife and Fisheries and any work done under a mineral lease from the State of Louisiana may necessarily be conducted in conformity with the rules and regulations promulgated by the said Department of Wildlife and Fisheries for Oyster Seed Bed Areas.

Applicant: LESLIE M. COOPER

Bidder	Cash Payment	Price/Acre	Rental	Oil	Gas	Other

Legend

10010018

Active_Leases

DOQQ2004

0 2,000 Feet



PLAQUEMINES PARISH

T22S - R31E

GULF OF MEXICO

SL 3382

AO 0304

AO 0005

AO 0006

T23S - R31E

P.O.B.